

LEGISLATIVE 2023 PRIORITIES

City of Springfield • City Utilities of Springfield • Greene County
Libraries & Arts Council Alliance • Missouri State University
Ozarks Technical Community College • Springfield Area Chamber of Commerce
Springfield Convention & Visitors Bureau • Springfield Public Schools
Springfield Regional Economic Partnership

Springfield Metro Partnership 2023 Legislative Priorities

Education and Workforce Development

Missouri's prosperity in the global economy is directly linked to our ability to attract and retain a skilled workforce. The Partnership supports investment in all levels of education, including full funding of the foundation formula and equitable funding and critical infrastructure investments for public universities and community colleges.

The Partnership encourages robust investment in Missouri One Start, the state's workforce development system, and in the Fast Track Workforce Incentive Grant, to help meet employers' current and future needs.

The Partnership support innovative solutions to current workforce barriers, including efforts related to childcare, transportation, and mental health services.

Preserving Local Elections

The Partnership supports preserving the April option for municipal elections and keeping local elections nonpartisan.

State Investments and Financial Future

Maintaining a balanced state budget without placing undue tax burden on citizens or reducing the effectiveness of essential state programs is key to Missouri's success.

As the state considers allocation of American Rescue Plan Act (ARPA) funds, the Partnership encourages strategic investment in projects that support regional and statewide growth, including workforce and economic development efforts.



Springfield Metro Partnership Legislative Guiding Principles

Economic Development

The Springfield Metro Partnership supports proven tax credit programs that are used to stimulate employment and leverage private investment. We oppose efforts to reduce the effectiveness of programs that significantly impact job creation and result in a positive return on investment for the state.

Environment

The Partnership encourages environmental standards that provide a balance between protecting our area's natural resources and ensuring regional economic growth. We support innovative strategies for meeting environmental mandates that require community affordability to be addressed within the evaluation process.

Elementary and Secondary Education

Quality education at all levels is a critical component to the health of the region. We support continued full funding of the state's K-12 foundation and transportation formulas.

Expecting academic rigor and accountability of our schools is key to providing students the skills necessary to compete in a global workforce. The Partnership supports the implementation of high and rigorous standards that develop the full potential of every child and opposes legislation that erodes the authority of local school boards or diverts resources from public schools to non-public schools.

The Partnership also supports investing in early childhood education, libraries and continuing education opportunities based on the public return on investment.

Libraries and the Arts

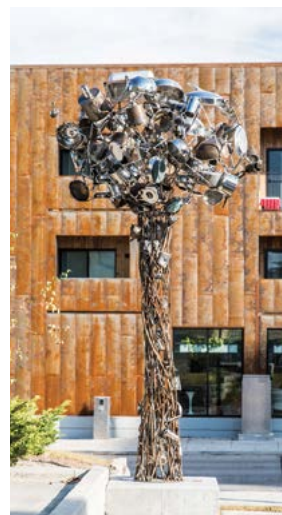
The Partnership supports the role of the arts, libraries, and cultural organizations as contributing to the economic health, educational growth and tourism of our region.

We support funding from the Non-Resident Professional Athletes and Entertainers Tax and the distribution of those funds as intended, without budgetary constraints or withholdings, including allocation to the Missouri Cultural Trust. Additionally, we support the restoration of state aid to libraries and REAL (Remote Electronic Access for Libraries) monies to FY 2015 levels.

The Partnership supports current local policies and procedures regarding access to material for library users.

Local Authority

There are narrow circumstances, such as a statewide crisis, in which a governor needs the ability to override local regulations. Beyond those circumstances, the Partnership opposes limiting local authority. State-mandated solutions and preemption of local laws limit the flexibility of local government. An alternative to preemption is for the State of Missouri to forge alliances with local government.



Higher Education

The Partnership encourages the General Assembly to eliminate the core funding disparities that result in Springfield area higher education institutions receiving less funding per student than other institutions throughout the state. The Partnership supports funding public higher education institutions at the highest possible levels because of the positive impact they have on all facets of life in Missouri, including economic and workforce development.

The Partnership supports funding for capital priorities at Ozarks Technical Community College and Missouri State University. Funding these projects aligns higher education funding with the state's workforce priorities, while meeting the needs of employers.



Local Funding

To ensure public safety and efficient access to justice, the Partnership supports increased funding for Greene County's criminal justice system, including the 31st Judicial Circuit courts and facilities, the statutorily set jail per diem, juvenile staff salaries and per diem, public defender services and prosecutor offices. The Partnership supports the continued collection of sales tax on out-of-state vehicles because of the impact the loss of revenue would have on local budgets.

The Partnership support efforts to improve public safety due to its impact on the economic growth of the region.

Travel & Tourism Industry

Growth in the travel industry is vital to the state's economy because it creates jobs and generates revenue. Investing in tourism marketing has a high return on investment. The Partnership encourages legislators to fund the Division of Tourism at a level appropriate to compete for out-of-state visitors effectively and to encourage in-state visitation by Missourians.

Transportation & Infrastructure

Transportation and infrastructure are critical to the economic success of our region and state. The Partnership encourages legislators to partner and collaborate with local leaders, public officials, citizen groups and other stakeholders to protect long-term funding for transportation investment. We support efforts to find alternative sources of funding for transportation infrastructure to ensure continued and robust investment.

We support efforts to accelerate the construction of projects when local communities are willing to assist with the financing of transportation improvements.

The Partnership supports restored funding for Springfield's public transit system, including compensation for the loss of state funds to help address the significant increase in costs to operate the transit system.

The Partnership opposes the transfer of state-owned roadways to local ownership and maintenance.

The Partnership supports the expansion of broadband throughout the state.

For more information, please contact:

Lauren Mustoe, Policy Analyst - Public Affairs

Springfield Area Chamber of Commerce

202 S. John Q. Hammons Parkway

Springfield, MO 65806

Phone: (417) 862-5567

lmustoe@springfieldchamber.com