



# Your Seminole. **YOUR CHAMBER.**



## WHY I'M A MEMBER

*"Our membership has been the single most important investment we have made for our business."*

Michael & Sheila Kramer,  
Lake Mary Life Publishing Inc.



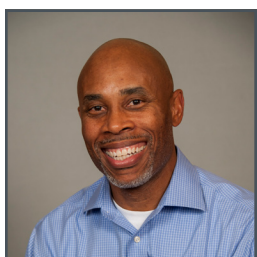
# ADVOCATE Membership Track

The Advocate Membership Track provides its members the opportunity to participate in many Chamber initiatives without further investment. It is specifically designed to showcase the businesses and organizations vital to the success of Seminole County and the Central Florida region.

The future growth of the community is a partnership between the Seminole County Chamber and you. Included in these membership levels are all CORE membership benefits, as well as significantly enhanced features to maximize your engagement and exposure opportunities.

|  | Trustee        | Chairman       | President      | Executive |
|--|----------------|----------------|----------------|-----------|
| <b>CORE Membership Package</b> (See right for details) | Included       | Included       | Included       | Included  |
| <b>Included Signature Event Tickets</b>                |                |                |                |           |
| Admission to State of the County                       | Four           | Four           | Two            | One       |
| Admission to Seminole Business Awards                  | Four           | Four           | Two            | One       |
| Admission to Three (3) Professional Women's Luncheons  | Four           | Four           | Two            | One       |
| Admission to Mayors Update                             | Four           | Four           | Two            | One       |
| Admission to Legislative Update                        | Four           | Four           | Two            | One       |
| Admission to Annual Meeting                            | Four           | Four           | Two            | One       |
| Entries to Riverside Dash 5K/15K                       | Fifteen        | Ten            | Five           | Two       |
| <b>Locations listed on SeminoleBusiness.org</b>        | Fifteen        | Ten            | Five           | Three     |
| Banner advertisement on website                        | Four weeks     | Two weeks      | One week       | One week  |
| Ribbon Cutting   | One            | One            | One            | One       |
| Enhanced Listing                                       | Included       | Included       |                |           |
| <b>Sponsorship credits</b>                             | <b>\$6,500</b> | <b>\$2,500</b> | <b>\$1,500</b> |           |
| Company inclusion on all general chamber collateral    | Logo           | Text           |                |           |
| Company inclusion at all chamber events                | Logo           | Text           |                |           |
| <b>Value</b>   | \$32,460       | \$17,885       | \$6,120        | \$3,725   |
| Choose one of the following payment options:           |                |                |                |           |
| <b>Monthly Investment*</b>                             | \$899.99       | \$450          | \$238          | \$98.50   |
| <b>Lump Sum Investment</b>                             | \$11,300       | \$5,665        | \$2,850        | \$1,140   |

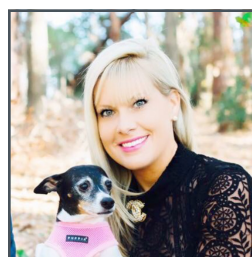
**MOST POPULAR**



## WHY I'M A MEMBER

*"The Seminole Regional Chamber is one of the most active and engaged chambers I've ever been associated with."*

Richard Kerr  
Insurance Office of America



## WHY I'M A MEMBER

*"As a Seminole County resident, the Chamber has allowed me to develop new and lasting relationships within our beautiful community."*

Kelly Rogers  
Findsome & Winmore



# ENGAGE Membership Track

The Engage Membership Track provides smaller companies ample exposure opportunities, access to information that impacts their businesses, and abundant opportunities to develop professional relationships throughout Seminole County. Depending on the level of your choice, you can participate in the Expo, events, digital media opportunities, and more; without any additional financial investment.

For many Chamber members supporting our mission – providing programs, services and leadership to enhance economic vitality and quality of life in our community – is reason enough to join. For those who desire a more direct return on your investment, the Engage Membership Track is the place to start.

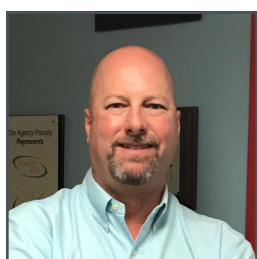
|  | Partner  | Entrepreneur |
|--|----------|--------------|
| <b>CORE Membership Package</b> (See right for details) | Included | Included     |
| <b>Included Signature Event Tickets</b>                |          |              |
| Admission to Seminole Business Awards                  | Two      |              |
| Standard booth at the Seminole Business Expo           | Included |              |
| Banner advertisement on website                        | One week |              |
|  |          |              |
|  |          |              |
|  |          |              |
|  |          |              |
|  |          |              |
|  |          |              |
|  |          |              |
|  |          |              |
|  |          |              |
|  |          |              |
|  |          |              |
|  |          |              |
|  |          |              |
|  |          |              |
| <b>Value</b>   | \$2,315  | \$1,805      |
| Choose one of the following payment options:           |          |              |
| <b>Monthly investment*</b>                             | \$70     | \$38.95      |
| <b>Lump sum investment</b>                             | \$795    | \$405        |

## CORE Membership Package:

Included in this package is:

- Admission to:
  - ChamberU
  - Good Morning Seminole
  - Business After Hours
  - Altamonte Small Business Networking
  - Business Alliance Business Networking (\$10 for Lunch)
  - Lake Mary Council Coffee Club
  - Longwood Lunch & Learn (\$6 for Lunch)
  - River Council Business Networking
  - South Seminole Business Networking
  - SeminoleTech
- Reduced admission to Signature events
- Annual member plaque, decal & "Proud Member" online badge
- Collateral display inclusion at Good Morning Seminole
- Affinity and member savings
- Website listing for your:
  - Business
  - Special offers
  - Events
  - Announcements
- Newsletter placements for your:
  - Special offers
  - Events
  - Announcements
- Leadership opportunities on committees and councils
- Certificate of origin

**Join Now at**  
**SeminoleBusiness.org**



## WHY I'M A MEMBER

*"Long-term relationships are critical to an insurance agency and the Chamber is a key to fostering those relationships."*

Mike Brockman  
Brockman Insurance



## WHY I'M A MEMBER

*"Being a part of the Seminole Chamber gives us the ability to work closely with businesses to keep our schools A+"*

Tina Calderone, Ed.D.  
School Board Vice Chairman

## More Visibility:

- **Shared Collateral Table:** Bring flyers, coupons and business cards for the shared collateral table with other members to bring awareness and new customers to you.
- **Seminole Business Expo Booth:** Members have a unique opportunity to reach more new customers through their membership with a booth at the Seminole Business Expo.
- **Enhanced Listing:** Upgrade your page to include: Logo | Photos | Priority Placement in the Online Business Directory | 1600 Character Business Description | Additional 200 Character Description right in the Search Results.
- **Email Banner Ads:** This advertising opportunity provides your company exposure to our 9,000+ email database twice a week through digital banner ads linking directly to your site.

## Mission:

To serve the interest of our members and the business community by providing programs, services and leadership to enhance economic vitality and quality of life in our community.

## Vision:

Be and be recognized as the most dynamic Chamber in the country.

## 2020 Highlights



### SupportSeminole

Over \$70,000 in generated revenue for our businesses through our #SupportSeminole initiative



### ENGAGEMENT

7,000 in total attendance since our first live event in June 2020  
(Includes live and virtual attendees.)



### SOCIAL MEDIA

100,000 people reached annually through Facebook alone



### VIRTUAL CONNECTIONS

1,700 virtual attendees



### SEMINOLE CHAMBER CRUSH

Brought nearly \$10,000 and new loyal customers to over 2 dozen local restaurants



### MARKET

More than 992 member press releases published

## INVEST IN THE CHAMBER TODAY!

Call 407.708.4600 to discuss your best investment level.



### WHY I'M A MEMBER

*"Our Chamber membership has provided us with great business opportunities and lifelong relationships."*

Brad & Lauren Miller  
J. Wayne Miller Company



### WHY I'M A MEMBER

*"The relationships, networking and lead generation provided by my chamber membership will allow my business to grow and prosper for years to come."*

Zaheer Dattoo  
Cutting Edge Signs  
and Visuals