



Your Seminole. **YOUR CHAMBER.**



WHY I'M A MEMBER

"Our membership has been the single most important investment we have made for our business."

Michael & Sheila Kramer,
Lake Mary Life Publishing Inc.



ADVOCATE Membership Track

The Advocate Membership Track provides its members the opportunity to participate in many Chamber initiatives without further investment. It is specifically designed to showcase the businesses and organizations vital to the success of Seminole County and the Central Florida region.

The future growth of the community is a partnership between the Seminole County Chamber and you. Included in these membership levels are all CORE membership benefits, as well as significantly enhanced features to maximize your engagement and exposure opportunities.

| | Trustee | Chairman | President | Executive |
|--|----------------|----------------|----------------|-----------|
| CORE Membership Package (See right for details) | Included | Included | Included | Included |
| Included Signature Event Tickets | | | | |
| Admission to State of the County | Four | Four | Two | One |
| Admission to Seminole Business Awards | Four | Four | Two | One |
| Admission to Three (3) Professional Women's Luncheons | Four | Four | Two | One |
| Admission to Mayors Update | Four | Four | Two | One |
| Admission to Legislative Update | Four | Four | Two | One |
| Admission to Annual Meeting | Four | Four | Two | One |
| Entries to Riverside Dash 5K/15K | Fifteen | Ten | Five | Two |
| Locations listed on SeminoleBusiness.org | Fifteen | Ten | Five | Three |
| Banner advertisement on website | Four weeks | Two weeks | One week | One week |
| Ribbon Cutting | One | One | One | One |
| Enhanced Listing | Included | Included | | |
| Press Release (per week) | Two | Two | Two | One |
| Sponsorship credits | \$6,500 | \$2,500 | \$1,500 | |
| Company inclusion on all general chamber collateral | Logo | Text | | |
| Company inclusion at all chamber events | Logo | Text | | |
| Value | \$32,460 | \$17,885 | \$6,120 | \$3,725 |
| CHOOSE ONE of the following payment options: | | | | |
| Monthly Investment* | \$965 | \$480 | \$238 | \$98.50 |
| Lump Sum Investment | \$11,300 | \$5,665 | \$2,850 | \$1,140 |

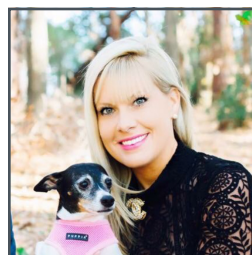
MOST POPULAR



WHY I'M A MEMBER

"The Seminole Regional Chamber is one of the most active and engaged chambers I've ever been associated with."

Richard Kerr
Insurance Office of America



WHY I'M A MEMBER

"As a Seminole County resident, the Chamber has allowed me to develop new and lasting relationships within our beautiful community."

Kelly Rogers
Findsome & Winmore

Effective January 2022 | All benefits subject to change | \$50 fee is charged to process new members | *3 month down payment plus application fee required to activate account
*plus \$5.00 monthly convenience fee | Non-profit companies with less than 25 employees are eligible for a 50% discount on the Entrepreneur level

ENGAGE Membership Track

The Engage Membership Track provides smaller companies ample exposure opportunities, access to information that impacts their businesses, and abundant opportunities to develop professional relationships throughout Seminole County. Depending on the level of your choice, you can participate in the Expo, events, digital media opportunities, and more; without any additional financial investment.

For many Chamber members supporting our mission – providing programs, services and leadership to enhance economic vitality and quality of life in our community – is reason enough to join. For those who desire a more direct return on your investment, the Engage Membership Track is the place to start.

| | Partner | Entrepreneur |
|--|----------|--------------|
| CORE Membership Package (See right for details) | Included | Included |
| Included Signature Event Tickets | | |
| Admission to Seminole Business Awards | Two | |
| Standard booth at the Seminole Business Expo | Included | |
| Banner advertisement on website | One week | |
| | | |
| | | |
| | | |
| | | |
| | | |
| | | |
| Press Release (per week) | One | One |
| | | |
| | | |
| | | |
| | | |
| Value | \$2,315 | \$1,805 |
| CHOOSE ONE of the following payment options: | | |
| Monthly investment* | \$70 | \$38.95 |
| Lump sum investment | \$795 | \$405 |

CORE Membership Package:

Included in this package is:

- Admission to:
 - ChamberU
 - Good Morning Seminole
 - Business After Hours
 - Altamonte Small Business Networking
 - Business Alliance Business Networking (\$15 for Lunch)
 - Lake Mary Council Coffee Club
 - Longwood Lunch & Learn (\$15 for Lunch)
 - River Council Business Networking
 - South Seminole Business Networking
 - Virtually Seminole Council
- Reduced admission to Signature events
- Member plaque, decal & "Proud Member" online badge
- Collateral display inclusion at Good Morning Seminole
- Affinity and member savings:
 - Healthcare and office supply savings
- Website listing for your:
 - Business
 - Special offers
 - Events
 - Announcements
- Newsletter placements for your:
 - Special offers
 - Events
 - Announcements
- Leadership opportunities on committees and councils
- Certificate of origin

Join Now at
SeminoleBusiness.org



WHY I'M A MEMBER

"Long-term relationships are critical to an insurance agency and the Chamber is a key to fostering those relationships."

Mike Brockman
Brockman Insurance



WHY I'M A MEMBER

"Being a part of the Seminole Chamber gives us the ability to work closely with businesses to keep our schools A+"

Tina Calderone, Ed.D.
School Board Vice Chairman

Effective January 2022 | All benefits subject to change | \$50 fee is charged to process new members | *3 month down payment plus application fee required to activate account
*plus \$5.00 monthly convenience fee | Non-profit companies with less than 25 employees are eligible for a 50% discount on the Entrepreneur level
Additional location listings are not available on the Engage Membership Track

More Visibility:

- **Shared Collateral Table:** Bring flyers, coupons and business cards for the shared collateral table with other members to bring awareness and new customers to you.
- **Seminole Business Expo Booth:** Members have a unique opportunity to reach more new customers through their membership with a booth at the Seminole Business Expo.
- **Enhanced Listing:** Upgrade your page to include: Logo | Photos | Priority Placement in the Online Business Directory | 1600 Character Business Description | Additional 200 Character Description right in the Search Results.
- **Email Banner Ads:** This advertising opportunity provides your company exposure to our 9,000+ email database twice a week through digital banner ads linking directly to your site.

Mission:

To serve the interest of our members and the business community by providing programs, services and leadership to enhance economic vitality and quality of life in our community.

Vision:

Be and be recognized as the most dynamic Chamber in the country.

2021 Highlights



SOCIAL MEDIA

83,000 reached on Facebook



MARKET

11,000 reads of member news



FOUND HERE

10,000 community events searched



ENGAGEMENT

12,000 event attendees



NETWORKING IN ACTION

113 small networking events



GROWING STRONGER TOGETHER

221 businesses joined



AWARD WINNING

Named Best Public Relations Campaign by FACP



CHAMBER WEBSITE

45,000 unique SeminoleBusiness.org visitors

INVEST IN THE CHAMBER TODAY!

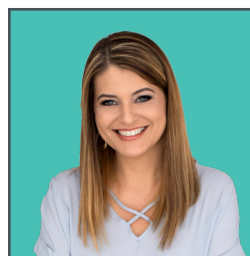
Call 407.708.4600 to discuss your best investment level.



WHY I'M A MEMBER

"Our Chamber membership has provided us with great business opportunities and lifelong relationships."

Brad & Lauren Miller
J. Wayne Miller Company



WHY I'M A MEMBER

"My chamber membership is priceless. I wouldn't be where I am today without it."

Andie Muller
The Flower Studio Altamonte