

ECONOMIC SUMMIT 2020 FORECAST

Managing **RISK**
Leveraging **REWARD**
Ensuring **RESILIENCY**

7:30 - 11:30am | December 10
Rochester International Events Center

REGISTER NOW

www.rochestermnchamber.com/events

2019-2020 Chamber Board OFFICERS

Chair of the Board **Aaron Benike**
Benike Construction

Treasurer **James Kelly**
Construction Partnership

Secretary **Emily Benner**
Prentice

Chamber President **Kathleen Harrington**

MEMBERS

Laurie Ackerman *Opportunity Services*

Chad Behnken *Hamilton Real Estate*

Christy Blade *Post Bulletin, LLC*

Jonathan Buck *Five West Kitchen + Bar*

Dr. Lori Carrell *University of Minnesota Rochester*

Steve Dunn *Taco JED*

John Eckerman *RSP Architects*

Scott Eggert *Broadway Plaza*

Jessica Eidem *IBM Corporation*

Cathy Fraser *Mayo Clinic*

Greg Griffiths *Dunlap & Seeger, P.A.*

Lizzy Haywood* *People's Food Cooperative*

Kevin Higgins *Olmsted Medical Center*

Marge Kelley *Express Employment Professionals*

Samuel Kwainoe *Farmers Insurance*

Sarah Miller *White Space, LLC*

Matt Morehead *Carlson Capital Management*

Michael Muñoz *Rochester Public Schools*

Dan Nistler *Merchants Bank*

Ryan Nolander *Rochester Area Economic Development, Inc.*

Nate Nordstrom *Brandhoot*

Jack Priggen *Cardinal of Minnesota*

Joselyn Raymundo *Rochester Home Infusion*

John Reed* *Rochester Airport Co.*

Therese White *Think Mutual Bank*

*Denotes at large members of the Executive Committee

MISSION

The Chamber promotes business success which supports a thriving community.

VISION

Rochester-area businesses are empowered to succeed in a diverse and collaborative climate.

VALUES

As a service organization, the Chamber is committed to conducting our work in accordance with the following values:

Collaboration | Diversity | Innovation
Integrity | Proactivity



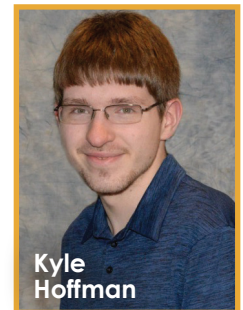
**Kathleen
Harrington**

PRESIDENT
507-288-1122



**Sam
Gill**

**DIRECTOR
OF PROGRAMS**
507-424-5687



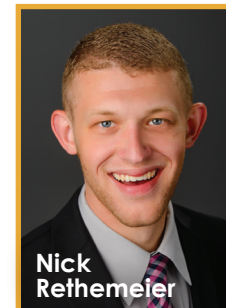
**Kyle
Hoffman**

**MEMBER SERVICES
ASSISTANT**



**Cheryl
Krage**

**DIRECTOR
OF OPERATIONS**
507-424-5699



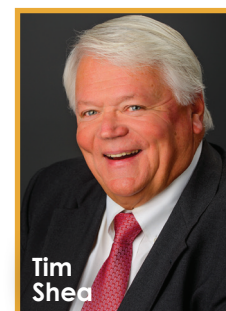
**Nick
Rethemeier**

**MEMBER SERVICES
COORDINATOR**
507-424-5670



**Mike
Schnell**

**GOVERNMENT
AFFAIRS MANAGER**
507-424-5666



**Tim
Shea**

**DIRECTOR OF SALES
AND DEVELOPMENT**
507-424-5663

Calendar of Events

November 1

AM ESPRESSO

Location Dahl Dance
2625 US-14 Suite E

Time 7:30 am - 9:00 am

Sponsor Visiting Angels, Dahl Dance,
Charlie's Eatery and Pub

November 12

EQUITYLOGIC FOR GROWING BUSINESSES SERIES 2.0

Location RCTC – Room HC210
851 30th Ave SE

Time 7:30 am - 10:00 am

Sponsors Diversity Council, RCTC,
Workforce Development, Inc.

November 15

WOMEN'S ROUND TABLE

Location Jaguar Conference Room
220 S Broadway, Ste 100

Time 7:30 am - 9:00 am

Sponsor Rochester Area Chamber of Commerce

November 21

BUSINESS AFTER HOURS

Location Merchants Bank
Northwest Plaza – 3586 55th St NW

Time 5:00 - 7:00 pm

Sponsors Merchants Bank, Labovitz MBA Rochester

December 10

REGIONAL ECONOMIC SUMMIT & FORECAST

Location Rochester International Event Center
7333 Airport View Dr SW

Time 7:30 am - 11:30 am

Sponsor Merchants Bank



A special **Thank You** to this month's
COMMUNITY BUILDERS



WELCOME TO NEW MEMBERS

Below is a description of this month's new Chamber members - reach out and welcome them to the community and the Chamber.

Code Ninjas

(507) 361-2633 | www.codeninjas.com/locations/mn-rochester

Code Ninjas is a fun & inviting place where kids learn to code by building video games. Kids have a blast while learning coding, math, logic, and teamwork. Parents see their kids gain amazing new skills. Our promise to you is: Kids Have Fun, Parent See Results.



Empire Event Center

(507) 529-7322 | www.facebook.com/empireeventsmn/

With over 8,000 square feet of meeting space, outstanding customer service, and impeccable catering the recently renovated Empire Event Center connected to the Apache Hotel is the ideal location for your upcoming event. Contact us today for availability or to schedule a tour!



Girls on the Run

(612) 217-4472 | www.gotrtwincities.org/Rochester

Girls on the Run is a nonprofit organization dedicated to creating a world where every girl knows and activates her limitless potential and is free to boldly pursue her dreams. GOTR teaches life skills through dynamic, interactive lessons and running games.



Glazon Group, Inc.

(763) 670-3452 | www.glazongroup.com

Glazon Group is a new State Licensed Comprehensive Home Care Provider in Rochester. Started by founders with more than 80 years combined experience in healthcare and related services. The founder of Glazon Group believes that providing personalized care services with love, kindness and compassion can make a difference in the lives of people.



Gresser Rochester, LLC

(651) 454-5976 | www.Gresserco.com

For 50 years, Gresser has served the Midwest and beyond with excellence in Commercial Concrete and Masonry Construction. We are now focusing our services in the Rochester market, and look forward to being a valuable partner in Rochester's exciting building initiatives for years to come.



Guerita's Window

(507) 206-4560 | www.lettuce-unite.com/gueritas

Located in the skyway system, Gueritas serves breakfast tacos from 7:30 am - 10:30 am and lunch from 10:30 am - 2 pm. They have meat and vegetarian tacos available and love hearing the phrase "One of each!"



Hot Chip Burger Bar

(507) 424-5670 | www.hotchipburgerbar.com

This is not your Dad's burger bar, this is a chef's burger bar. Hot Chip believes that a great burger is a work of art, and with 17 different burgers, gives you plenty of works to choose from.



IdeaCom Mid America

(651) 228-2636 | www.idea-ma.com

IdeaCom provides expert consultation, design, installation and service of communication, security and workflow technology for healthcare, senior living, education, hospitality and commercial organizations. Our focus is finding areas where each organization could be more productive, improve communication, security and ensure successful outcomes and then helping them create the technology path to get there.







MAIN
975 34TH AVE NW
ROCHESTER, MN 55901
(507) 280-0621

ELTON HILLS
120 ELTON HILLS DR NW
ROCHESTER, MN 55901
(507) 280-0028

STEWARTVILLE
1600 2ND AVE NW
STEWARTVILLE, MN 55976
(507) 504-1060

LOCALLY OWNED

LOCALLY MANAGED

LOCAL DECISIONS

ED HRUSKA
BUSINESS DEVELOPMENT OFFICER
MAIN: 507-280-0621
CELL: 507-208-0450
ED.HRUSKA@BANKONONB.COM

MEMBERSHIP

Leeann Chin – Rochester

(507) 206-0701 | www.leeannchin.com

Leeann Chin the Twin Cities leading Asian Quick Serve chain of 50+ restaurants is THRILLED to finally serve the Rochester market. Our award winning "Bold Flavors and Great Taste" product is available for dine in, carry out, can be ordered on-line, through various Third Party services and is available for Corporate Catering and Delivery. We hope to see you soon at our location in Rochester on Marketplace Drive.



Lettuce Unite

(507) 206-4560 | www.lettuce-unite.com

Lettuce Unite is the next generation of salads featuring proteins, greens, healthy carbs, sweet, spicy, sour, crunch, BALANCED. Lettuce Unite also serves Greek Yogurt Bowls with fruits, power blend mix, granola, and a drizzle of something sweet.



Le Petit Café, LLC

(507) 258-4561 | www.le-petit-cafe.com

A European influenced Bistro with emphasis on fine dining, we excel at delivering fresh flavours and beautiful food served in an elegant setting. Lunch, dinner, family gatherings or business meetings, we can cater to your needs in the main restaurant or private sun room.



MetroNet

(812) 916-1564 | www.metronetinc.com

MetroNet is a customer-focused company providing cutting edge fiber optic telecommunication services, including high-speed Fiber Internet, full-featured Fiber Phone, Fiber IPTV with a wide variety of programming, and a home security product called MetroNet SmartHome.



Palmer Soderberg, Inc.

(507) 288-4213 | www.palmersoderberg.com

Palmer Soderberg, Inc. specializes in drywall, acoustic, ceramic tile, resilient plaster and carpet. We have the experience & craftsmen to complete your job right the first time.



Porch

(507) 322-6551 | www.porchrochester.com

Porch is a family style, comfort food restaurant located at the old train depot downtown. The goal at Porch is to feed your soul as well as fill your stomachs.



Rochester Repertory Theatre Company

(507) 289-1737 | www.rochesterrep.org

The Rochester Repertory Theatre is a nonprofit community theatre that stages seven live productions each season in an intimate 90 seat venue. We are an all volunteer organization that welcomes everyone to its stage and audience.



TLC Surfaces

(507) 322-6440 | www.tlcsurfaces.com

TLC Surfaces is a family owned and operated business specializing in cabinets and stone countertops. With our large indoor slab warehouse, you'll be sure to find something that not only fits your look, but also your budget.



WT Lighting

(507) 281-5961 | www.wtlightingmn.com

WT Lighting provides lighting solutions. From lamp repairs to remodels, from single family homes to larger commercial lighting projects, WT Lighting is your local lighting expert that brings your vision to light.



Zen Custom Homes

(507) 319-3464 | www.zencustom.net

Zen Custom Homes is a Design-Build firm, operating as a "one-stop shop" for homeowners. We begin by setting a budget and a schedule to meet your needs and then together, we work with our architect to develop a plan to achieve your dreams. Whether it's building a custom home, adding on to your current home, or remodeling, our simplified process will save you time and money.



SAVE THE DATE!

JANUARY 21, 2020

LIVING & LEADING WITH PURPOSE 2020

AN EVENT FOR WOMEN, BY WOMEN, TO SUPPORT WOMEN IN REACHING THEIR GOALS.

KEYNOTE
SPEAKER

Q & A
PANELS

VENDOR
EXPO


AND
MORE!


WWW.ROCHESTERMNCAMBER.COM/LIVINGANDLEADINGWITHPURPOSE2020

Make a Difference – Shop Local FIRST

Dear Chamber Members,

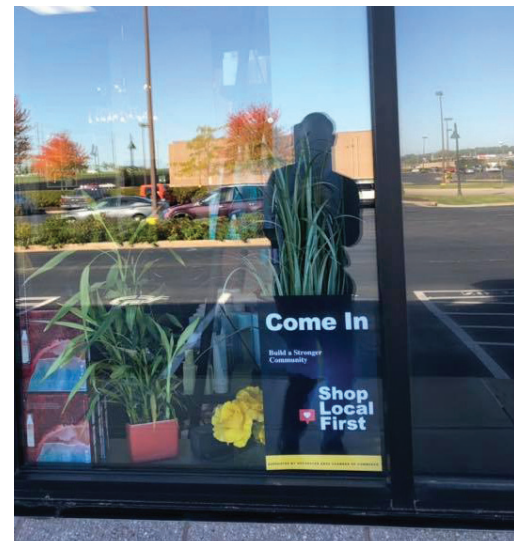
The Chamber's mission is to promote business success which supports a thriving community – a vibrant place to live, work, and play. If each one of us made a simple commitment to Shop Local First, we will strengthen our community and make a positive difference for our friends, family, neighbors and our future.

Shop Local First  is a very simple message. The goal is for everyone to think about local stores, services, and entertainment options before we get in our car to drive to the Cities or go online to purchase items that are available right here in our community. Soon you will see posters in store doors and windows throughout our community inviting shoppers to come in and shop -- to invest locally to help strengthen our community.

There is no doubt that Shopping Local First  will expand our community's economic strength. In fact, the Chamber's economic impact analysis showed if businesses with fewer than 100 employees increased their sales by 5 percent the economic activity in Olmsted County would add an estimated 2,800 jobs, add another \$129.6 million in labor income and increase our total economic output by almost \$400 million. That is significant and it can be done!




Shop Local FIRST  = **More Jobs, Tax Revenue, Philanthropy** = **A Stronger Community**





Holiday Launch Class

On October 10, 2019, the Chamber sponsored another in its Shop Local First  series of classes. This one was focused on key elements and ways to improve your customer experience. Jointly sponsored by RSP Architects and ABC 6 News, an expert on spatial design and display and a panel of local businesses representing three different sectors - retail, professional services, and hospitality - shared valuable insights on providing memorable customer experience. Customer experience was defined as the sum total of the customer's perception of your business based on their interactions across every stage of their buying journey from your marketing messaging, products sold, service provided before, during and after the sale.



Customers keep returning because we have gotten to know them personally. So much of what we do is about what and how people feel—that's how we serve our clients and work to rise above the competition.

—Shawn Fagan, Fagan Photography

Key Takeaways from Speakers

Know your customer and put them at the center of everything you do.

- Observe and research what your customers' expectations are and deliver on their expectations.
- Control your messaging to be sure you can meet what you promise.
- Give your customers what they want; sell them what they want to buy. Strive to provide them with the best value, for that is what determines whether they want to do business with you.

Develop positive, lasting customer relationships.

- Think of welcoming a customer into your business as you would welcome a friend into your home.
- Acknowledge and thank your customers regularly for their business.
- Get to know your customers. Customers who keep coming back do so because they feel you care about them.

Ensure doing business with you is natural, efficient, and enjoyable.

- Build a team of employees who are passionate about the customer experience you strive to offer.
- Reduce "buying friction" for consumers to ensure a positive customer experience. Nearly 80% of American consumers point to speed, convenience, knowledgeable help, and friendly service as the most important elements of a positive experience.

I feel that my customers and employees are part of my family. When they are in the store, they are going to experience the smell, the taste, the environment of being in New York City or my home in Italy.

Pasquale Presa,
Pasquale's Neighborhood Pizza



CHAMBER MEMBERS SUPPORTING EACH OTHER

The holiday season is no exception. Below is a list of Chamber members who can meet your holiday season catering needs.



Canadian Honker Restaurant & Catering
www.CanadianHonker.com



El Sueño Taqueria
[www.facebook.com/ElSuenoMexichino1/#](https://www.facebook.com/ElSuenoMexichino1/)



Caribou Coffee
www.CaribouCoffee.com



Empire Event Center
www.facebook.com/EmpireEventsMN



Catering By Design
www.CateringByDesign.org



Five West Kitchen + Bar
www.FiveWestRochester.com



Charlie's Eatery & Pub
www.CharliesEateryAndPub.com



Francisco's Cuban Café
www.FranciscosCubanCafe.com



Chick-fil-A
www.Chick-Fil-A.com/Locations/Mn/Ear-Of-Corn



Grand Rounds
www.GrandRoundsBrewing.com



Cold Stone Creamery
www.ColdStoneCreamery.com/Catering/Index.html



Hy-Vee
www.Hy-Vee.com



DoubleTree Rochester/Downtown
www.RochesterDowntown.DoubleTree.com



India Garden
www.India-Garden-Restaurant-Halal-Restaurant.business.site



Dunkin'
www.DunkinDonuts.com/En/Locations?Location=2519%20Commerce%20Drive,%20Rochester,%20Mn



J. Powers At The Hilton
www.JPowers.Events



Eastwood Grill
www.RochesterMN.Gov/Departments/Parks-And-Recreation/Golf/Eastwood



Jerk King
100 1st Ave SW (Street Level) | 507-258-4451



Kahler Grand Hotel
www.kahler.com



Powers Ventures
www.PowersVenturesMN.com



Leeann Chin - Rochester
www.LeeannChin.com/Restaurant/Rochester-MN/3809-Marketplace-Drive



Smoak (Opening Mid-December)
www.Facebook.com/SmoakBBQ



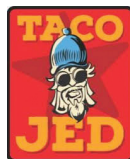
Le Petit Café
www.Le-Petit-Cafe.com



Sontes Catering
www.SontesCatering.com



The Loop
Rochester.LoopRestaurants.com



Taco Jed
www.TacoJed.com



Marriott
www.Marriott.com



Terza
Terza3.Com



Pasquale's Neighborhood Pizzeria
www.PNPizza.com



Tonic
www.TonicFreshJuice.com



People's Food Coop
www.PFC.coop



Toppers Pizza
www.Toppers.com



Pinnacle Catering
www.PinnacleCateringMN.com



Wildwood Sports Bar & Grill
www.WildwoodSportsBarAndGrill.com



Potbelly Sandwich Shop
www.Potbelly.com



You Betcha Cupcake! LLC
www.YouBetchaCupcake.com

MEMBERSHIP DIRECTORY

Don't forget to use the membership directory to help you find local businesses and Shop Local FIRST 📍.

2020 Local Government Budget Updates

City of Rochester

- Final determination on the Rochester budget will be made at the December 16th City Council meeting.
- City Council has determined that the maximum property tax increase will be 6.5%; this amount can decrease but not increase.

Olmsted County

- Final determination on the Olmsted County budget will be made at the December 17th County Board meeting.
- County Board has determined that the maximum levy increase can be 4.5%; this amount can decrease but not increase.
- Olmsted County Housing and Redevelopment Authority (HRA) levy will increase from \$2.5M to \$3.4M. This increase allows for more money invested in property improvements to both homeowners and rental property owners in the form of rental assistance.

More detail on each of these proposed budgets can be found at:

City of Rochester

<https://www.rochestermn.gov/departments/finance-information-technology/reports/current-budget-summary/2020-budget-summary>

Olmsted County

<https://www.co.olmsted.mn.us/finance/Pages/Budgets.aspx>

Engage in the Process

If you want to voice your opinion on the local government budgets, your Council Member and County Commissioner can be found at the following websites respectively.

City of Rochester

<https://www.rochestermn.gov/government/city-council/ward-maps>

Olmsted County

<https://www.co.olmsted.mn.us/boardofcommissioners/Pages/districtmaplocator.aspx>

Transportation Update

The Chamber's Government Affairs Committee and the Transportation Forum held a join meeting to hear from the Rochester-Olmsted Council of Governments (ROCOG) about the development of its 25 year plan. ROCOG's long term regional transportation planning includes many projects that could impact local businesses such as:

- Highway 52/Highway 14 Interchange
- Highway 14 corridor from County Road 104 to Byron
- Highway 52/55th Street interchange
- North Broadway starting just north of the Silver Lake Dam
- City, County, and DMC Transit Plans which include the transit circulator and various park and ride lots.

Provide your input to ROCOG <http://bit.ly/ROCOG2045>

Meet ISLAND ON AN

Treasure Island
RESORT & CASINO

Tlcasino.com | 1-800-222-7077



History Center of Olmsted County AM Espresso: Oct. 4

"Thank you to the AM Espresso attendees who visited our current exhibits exploring the history of business in Rochester. The success of the area has rested on strong partnerships, especially between the Mayo Clinic and the business community. The History Center celebrates this collaborative approach and looks forward to working with the business community to both honor the past and embrace the opportunities of the future."

–Wayne Gannaway, Executive Director



Ranfranz & Vine Funeral Homes Business After Hours: Sept. 19

"Business After Hours provided Ranfranz & Vine Funeral Home the opportunity to share not only our work with families, but introduce our guests to our Remembrance & Reception Centre. It was a valuable opportunity to network with businesses and community leaders."

–Teresa Czaplewski, Director of Public Relations



CELEBRATING CHAMBER MEMBERS' SUCCESS

The Rochester Area Chamber of Commerce and our Ambassadors are honored to celebrate with the following organizations who are investing in our community, providing quality jobs, and contributing to our strong economy. Ribbon Cuttings are celebrations to help promote each business – highlighting their special event with marketing and enhanced social media promotion.

NEW BUSINESSES



01 Code Ninjas

(507) 361-2633 | www.codeninjas.com



02 Eastgate Apartments

(507) 405-5001 | www.eastgaterochester.com



03 Rochester Auto Care

(507) 450-3222 | www.rochautocare.com

DREAM BIG
PLAN SMART
DO WELL

brandhoot
brandhoot.com/contact

Business consulting, user experience design, custom websites & apps

RIBBON CUTTINGS CELEBRATIONS

New Location &
Opening of Show



04 Absolute Theatre

(507) 251-1127 | www.absolutetheatre.org

Opening of
New Boutique



05 Hy-Vee West Circle Drive Joe Fresh Boutique

(507) 292-6000 | www.hy-vee.com

60th Anniversary



06 Rennings Flowers

(507) 251-1818 | www.renningsflowers.com

New Building Ownership
& Opening of Fall
Season



07 Rochester Repertory Theatre Company

(507) 289-1737 | www.rochesterrep.org

RENEWING MEMBERS

Thank you for your continued investment in our community.

All Systems Installation
American Cancer Society
Apple Tree Dental
Beckley's Inc.
Bishop Management Co.
Boys & Girls Club of Rochester
Fran Bradley
Broadway Plaza
Buffalo Wild Wings
Bruce Buller
Centric Creative Consulting, LLC
College Nannies, Sitters + Tutors
Danielle's Consignment Boutique
Davies Printing
Ellingson Insurance Group, LLC
EnviroBate

Experience Rochester MN
F & M Community Bank
Fernbrook Family Center
First Farmers & Merchants State Bank
Gramercy Park Cooperative of Rochester
Hey! Original Storytelling
History Center of Olmsted County
Holiday Station Stores
Homewood Suites by Hilton
Jeffrey D. Reimer, CPA, PLLC
Karel Weigel
Kraft Therapeutic Massage
La Crosse Sign Group
Majestic Tents and Events
MenSalon LLC
Metropolitan Market Place LLC South

Nature's Best Cleaners
Penz Dental Care
Platinum Experience Consulting, LLC
PMC Events & Consulting
Realty Growth, Inc.
Rochester Downtown Alliance
Rochester Indoor Golf Center
Rochester Public Library Foundation
SFM - - The Work Comp Experts
Sound and Media Solutions
The Homestead at Rochester
The UPS Store
Tuohy Furniture Corporation
University of Minnesota Rochester
Victoria's Fine Italian Cuisine
W. Mark Krupski
Weber Johnson Public Affairs
WellSpring Acupuncture Clinic



Workforce Development, Inc.

www.workforcedevelopmentinc.org

Workforce Development, Inc. wishes to announce the selection of **Jinny Rietmann** as its new Executive Director, starting July 1, 2019. "My goal is to continue to support the excellent work, customer service, and impact that WDI has made over the past 30+ years. Our most valuable asset is our dedicated, passionate, and compassionate staff - we need to continue to utilize their strengths and knowledge and maximize our value through continuous programming that works, while having an ear to the future and the changing needs of our demographics, economy, and workforce," said Ms Rietmann.



Family Dentist Tree

www.familydentisttree.com

Family Dentist Tree is excited to introduce **Dr. Chelsea Reis**! She graduated from the University of Minnesota with a biology degree in 2014, followed by a D.D.S. in 2019. Dr. Reis was inspired to follow in her father's footsteps as a dentist after seeing firsthand the positive impact of quality and compassionate dental care. Mirroring that great example, Dr. Reis strives to "go the extra mile" for each and every patient.



Family Dentist Tree

www.familydentisttree.com

Family Dentist Tree is excited to introduce **Dr. John Mettler**. He received his B.A. in Food Science and Technology from Iowa State University in 2015. He attended the University of Iowa to earn his D.D.S. in 2019. John has wanted to be a dentist since kindergarten and is excited to share his passion of dentistry to best support his patients.



Think Mutual Bank

www.thinkbank.com

Think Mutual Bank welcomes **Tammy Pfeffer** as Senior Vice President of Financial Services. Tammy is an experienced financial services leader with a strong background in community banking, credit, and wealth management. She will lead Think's financial planning, mortgage, and insurance teams and advance products and services in those areas and across the enterprise. Before joining Think Mutual Bank, Tammy served as Vice President of Private Banking at Bremer Bank.



Bolton & Menk

www.bolton-menk.com

Matt Mohs joined Bolton & Menk as a municipal project manager, bringing more than 20 years of experience in municipal engineering. He enjoys providing his clients with solutions that make their communities better places to live. His experience includes managing design and construction services, coordinating among stakeholders, and leading public engagement on municipal improvement projects. Matt has served as the consultant city engineer for several communities in Central Minnesota as well as Southeast Minnesota.



Bremer Banks

www.bremer.com

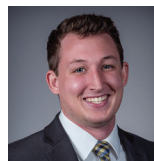
Alissa Moe joins Bremer Bank as their newest Business Banker in the south Broadway branch location. Alissa comes from a sales and business development background. She is a proud University of Minnesota alumna and has a Master's degree in Management and Organizational Leadership from Western Governors University. In addition to representing Bremer Bank within the community, she serves as Vice President of the Board of Directors for the Rochester Area Builders and will be President of the Board for 2020. She also devotes time to volunteering with 40 Below, a young professionals group, and serving on the United Way Campaign Cabinet.



Edward Jones

www.edwardjones.com

Staci Kaltenbach a financial advisor with Edward Jones is pleased to announce that she is now a CERTIFIED FINANCIAL PLANNER (tm) professional, a designation conferred by the CFP Board, a non-profit organization based in Washington, D.C. She received the CFP® certification after fulfilling extensive education requirements, passing the rigorous standardized national examination process, demonstrating work experience and completing the ethical requirements. Study topics include the financial planning process, risk management, investments, tax planning and management.



ABC 6 News

www.kaaltv.com

ABC 6 News is thrilled to welcome Account Executive, **Colton Simpson**, as he takes a deep dive into our growing digital product line and assists local businesses share their unique offerings. Colton comes to Rochester fresh off the Appalachian Trail after serving a short tenure at Tesla Motors. He is ecstatic for the opportunity to merge his analytical skills with his creative flair, using his keen eye for user experience, design and visual storytelling.

Register Now!

Chamber Economic Summit & Forecast

December 10

rochestermnchamber.com/events



Seasonal Parking Requirements

CITYWIDE • 10/1 - 5/1



In effect citywide October 1 to May 1.



REQUISITOS DE ESTACIONAMIENTO POR TEMPORADA INVERNAL

En vigor en toda la ciudad del 1 de octubre al 1 de mayo.

SHURUUDAHA BAARKINKA XILLIYEED

Waxaa laga hirgaliyay magaalada oo dhan Oktoobar 1 illaa May 1.

Important Items

- This does not apply to metered parking spaces
- This does not apply to streets where parking is only allowed on one side.
- Posted signs with parking restrictions still apply at all times.
- Cars parked in a cul-de-sac must follow alternate side parking requirements

ALTERNATE SIDE PARKING	
EVEN DAYS	ODD DAYS
<p>Park on EVEN house numbered side of the street on EVEN numbered days from 2AM - 3PM</p>	<p>Park on ODD house numbered side of the street on ODD numbered days from 2AM - 3PM</p>
<p>*Remember there may be two odd days in a row (31st and 1st).</p>	

Questions? Visit rochestermn.gov/winter or call 507-328-2900

ROCHESTER AREA

CHAMBER OF COMMERCE

220 South Broadway, Suite 100

Rochester, MN 55904

507-288-1122

www.RochesterMNChamber.com

Periodical
Postage

PAID

Rochester, MN

PLEASE SHARE THE *Advantage*
Route around your office.

FOR OFF-SITE

HOLIDAY

Catering

PLEASE CONSIDER

CANADIAN HONKER

Catering



CALL US
FOR MORE INFORMATION

507.258.4633

CanadianHonkerCatering.com

2112 2nd St. SW, Suite 100

Rochester, MN 55902



Menu

Complete Menu Available Online
CanadianHonkerCatering.com

Delivery

Delivery within Rochester Available

Venue Options

The Historic Mayo Wood Stone Barn
Rochester Event Center
The Hilton Hotel Down Town

Includes: Set-up, tear down, linen tablecloths for your buffet tables, and our quality paper products

FREE
Bunnie's Coconut Cake
with each
Holiday Party
for 2019

