



Path Forward: Vaccine Strategy Information for Business Webinar

2/11/2021



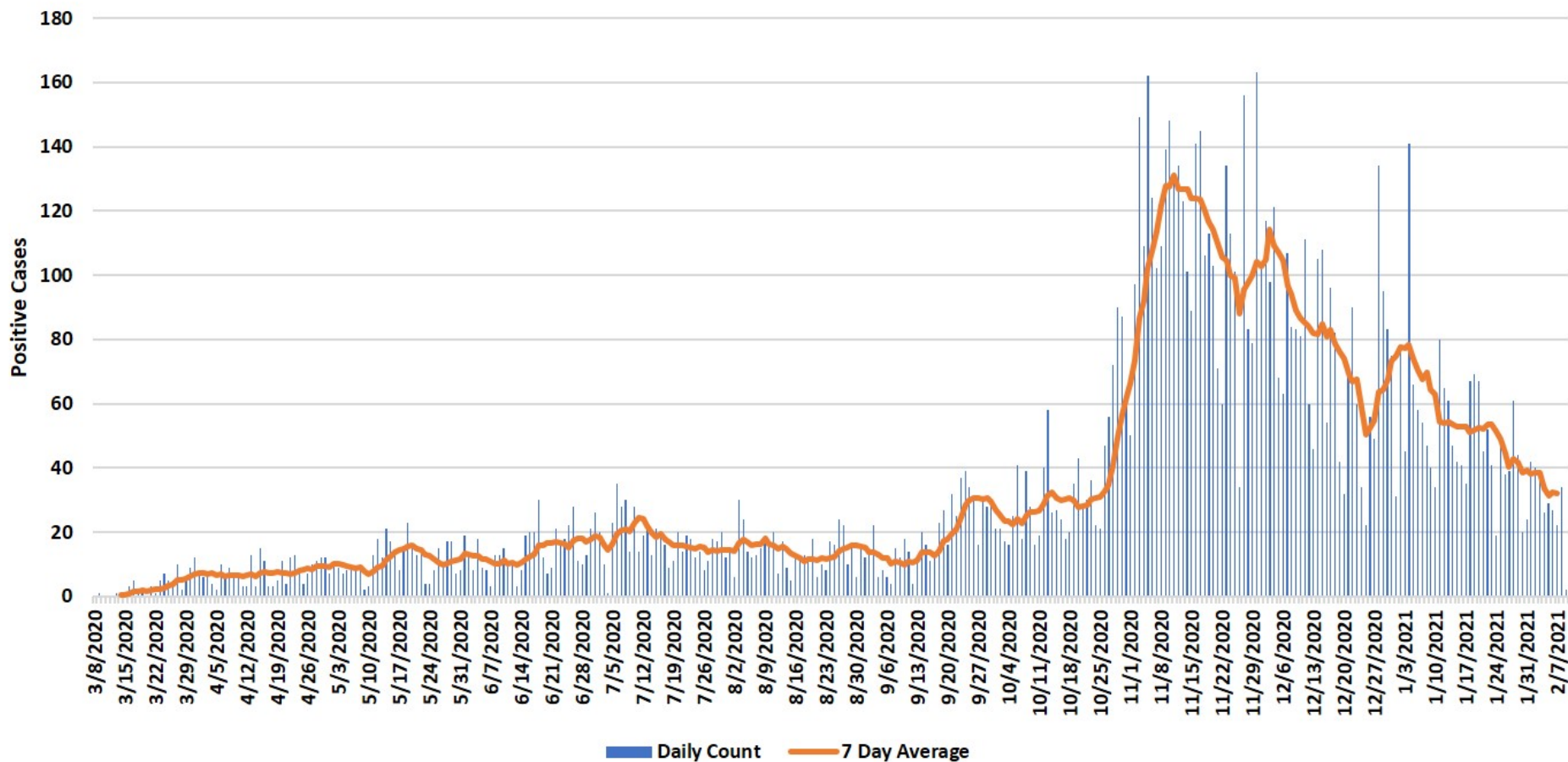
Public Health
Prevent. Promote. Protect.
Olmsted County

Michael Melius
Associate Director
Olmsted County Public Health Services

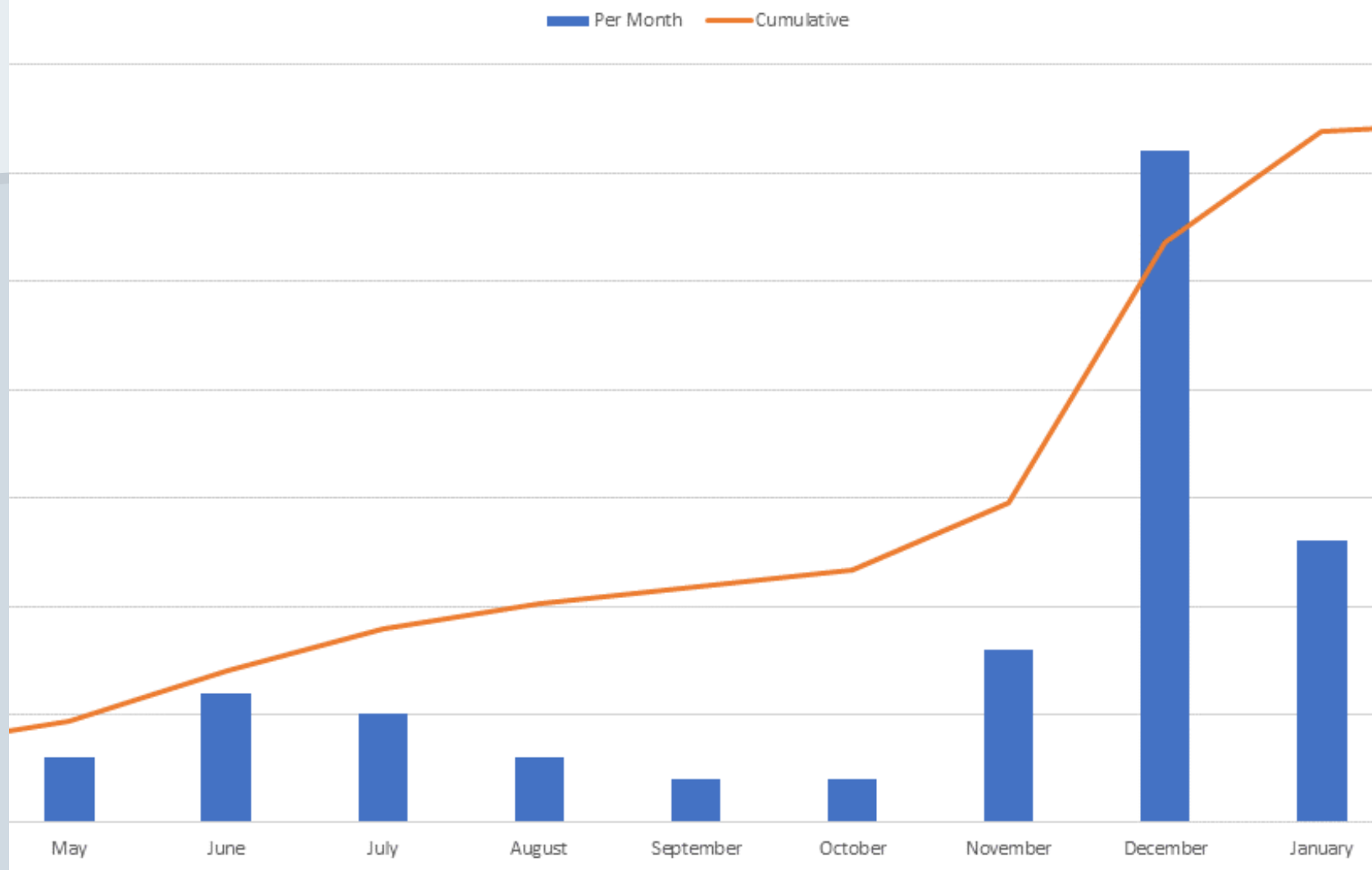
Daily and 7-Day Rolling Average Number of COVID-19 Cases

Olmsted County

As of 2/10/2021



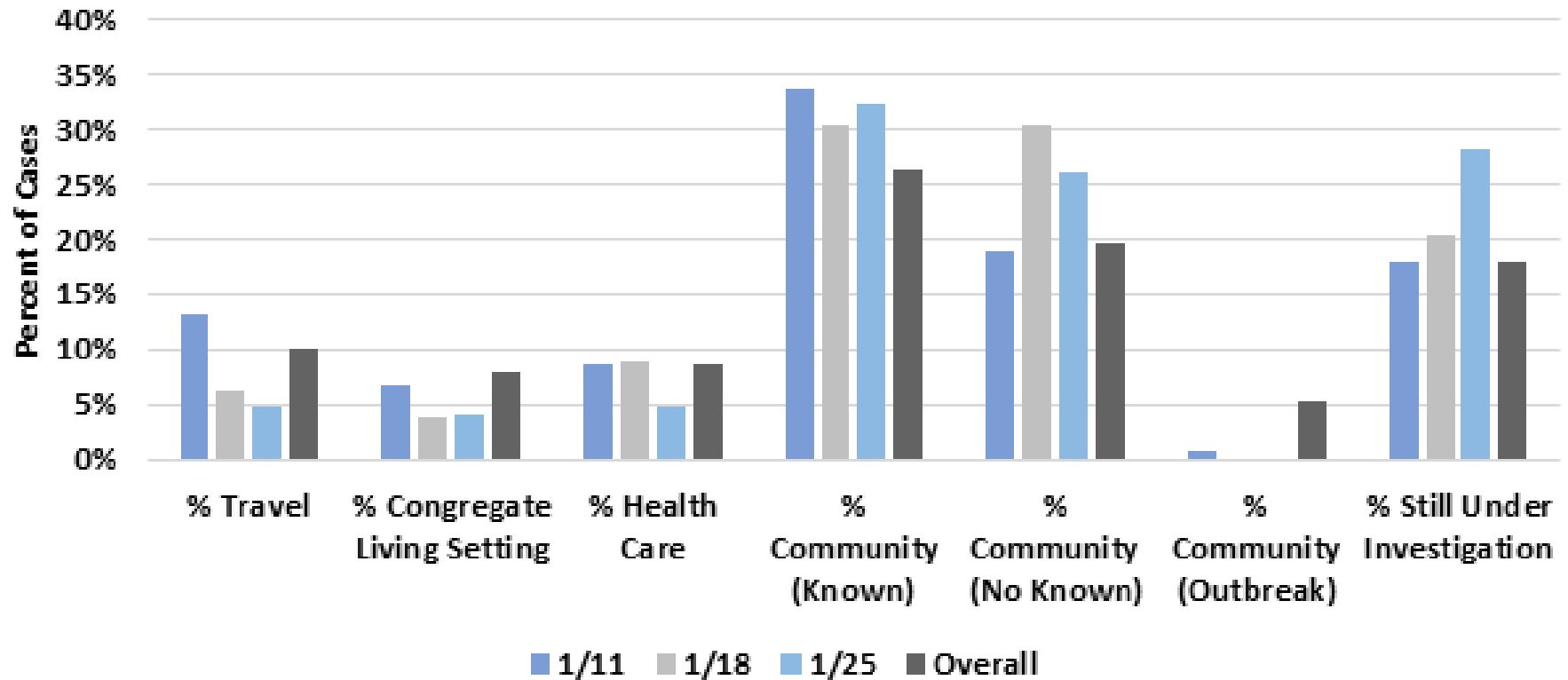
Olmsted County Deaths April 2020-Present As of 2/7/2021



COVID-19 Cases by Exposure - Weekly Comparison

Olmsted County

As of 2/4/2021



Actively manage COVID-19 risks in your business

- **Policies and practices** that protect employees and guests,
- **Training** all staff on the practices,
- **Verifying** that policies and practices are being followed and make improvements when needed.

Management presence!
ex. breakrooms

See *Rochester Ready* (and state plan templates) for more information

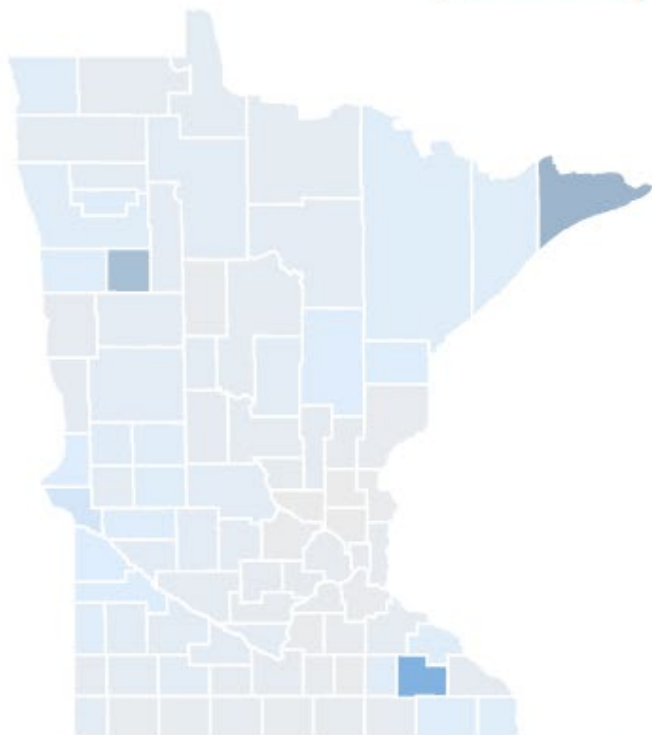


Olmsted County Public Health
Nationally Accredited Health Department

**ROCHESTER
READY** ✓

County-level data represents percent of the county population who have at least one dose of a vaccine.

Reset map



Low Moderate High

OLMSTED COUNTY

Click on a county to narrow results. Data reported as of 2/8/2021.



People with at least one vaccine dose

34,607

22.4%



People with completed vaccine series

17,259

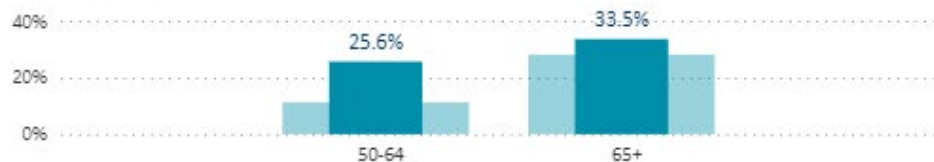
11.1%

Age group

Gender

Age group	People with at least one vaccine dose
16-17	22
18-49	19,115
50-64	7,636
65+	7,833
Unknown/Missing	1
Total	34,607

People 50+ with at least one vaccine dose



As a percentage of their age group population



Olmsted County Public Health
Nationally Accredited Health Department

- ◇ MDH has yet to define this group within ACIP guidelines, likely will be over 1 million people in MN
- ◇ Subset of essential workers likely at highest risk for work-related exposure to COVID-19 because their work-related duties must be performed on-site and involve being in close proximity (<6 feet) to the public or to co-workers



Entity	Phase 1A	Long-term Care staff/residents	E-12 educators/staff	Child care providers	*65+
Hospitals/clinics	X				X
Olmsted County Public Health	X	X	X	X	
Local pharmacies		X			X
State of MN Pilot Program			X	X	X
State of MN Community Vaccination Program					X



Olmsted County COVID-19 Webpage

<https://www.olmstedcounty.gov/covid/vaccine>

Examples of ... 1B:

- First responders (fire & law enforcement)
- Corrections officers
- Food and agricultural workers
- US Postal Service workers
- Manufacturing workers
- Grocery store workers
- Public transit workers
- Education sector & childcare (added to Phase 1 based on Governor's Direction)



Olmsted County Public Health
Nationally Accredited Health Department

COVID-19 Vaccine

[MDH Vaccine Data Dashboard](#)

Disclaimer: The information on this page is continuously changing. Please check back often.

Last updated: February 9, 2021

[COVID-19 Vaccine](#)

[COVID-19 Vaccine FAQs](#)

[COVID-19 Vaccination Planning for Businesses](#)

[COVID-19 Weekly Update](#)



This form is intended for Olmsted County businesses (added 1/7/21)

Olmsted County continues to provide vaccinations to those identified in priority groups as established by the MN Department of Health. Vaccines are not provided on a first come first serve basis. Filling out this form helps us identify what priority group your agency falls under and who to contact once we are ready to administer the vaccination for the priority group you fall in. Moving from one phase to another will depend on vaccine supply and how many people are getting vaccinated, so it is hard to estimate when one phase will end, and another will begin.

We will inform you of pending vaccine availability for your priority group, as soon as we are able to anticipate it.

More information can be found at www.health.state.mn.us/diseases/coronavirus/vaccine.

Please complete the form below if you are an Olmsted County business.

[COVID-19 Vaccination Planning for Businesses Form](#)



COVID-19 Vaccine

- You can help stop the pandemic by getting a COVID- 19 vaccine when it is available to you,
- You will still need to wear a mask and socially distance after getting each shot of the vaccine for now,
- COVID-19 vaccines are safe and effective
- After COVID-19 vaccination, you may have some side effects. These are normal signs that your body is building protection.
- COVID-19 vaccine will be free for you.



FAQs

Can I get on a list for the vaccine?

- At this time, we are only collecting information from businesses, organizations and agencies in Olmsted County to help us plan for future vaccinations of our critical infrastructure as defined by the State (see the COVID-19 Vaccination Planning for Businesses tab). There is no list for individuals. At this time, those over the age of 80 will be contacted by their primary healthcare provider to receive the COVID-19 vaccine. This group will continue to expand as vaccine becomes more plentiful. Eventually, all who want to be vaccinated, will have the opportunity to get vaccinated.

When could vaccines become widely available?

- The FDA approved the Pfizer vaccine Dec. 11 and the Moderna vaccine on Dec. 18. States were required to place orders for the initial round of vaccine doses by Dec. 4. Progress is being made, although slower than we might like. In Olmsted County, we are close to completing all of Phase 1A and will soon be vaccinating 1B. We continue to provide vaccinations to those currently eligible, including our older populations, school/education staff, childcare workers, and critical infrastructure businesses as defined by the State. Vaccinating the general population could begin in late spring or early summer, depending on vaccine availability.

I own a business -- When can my staff get vaccinated?

- All businesses, organizations, and agencies (including schools, daycares, non-profits, etc) in Olmsted County are asked to complete a form for COVID-19 vaccine planning purposes.
- This form will help identify all the businesses in the county and determine where the business falls within the phases and priorities. The form allows Public Health to quickly connect with the business once vaccines are available and we are able to administer to the various priority groups.
- Olmsted County Public Health, Mayo Clinic, Olmsted Medical Center, and local pharmacies are collaborating and sharing responsibility for vaccinating their respective worksites. **Businesses will be contacted by the assigned health care entity.** This is the best way to ensure your business and staff, are included in the vaccine planning for the county. The form itself does not register the business or the staff for the vaccine – it simply ensures you are in the system and that you will be contacted as soon as possible.



Q&A

(later in session)

Michael Melius, Associate Director
Olmsted County Public Health Services

community call line: [507-328-2822](tel:507-328-2822)

Vaccine Page: <https://www.olmstedcounty.gov/covid/vaccine>

Business Form:

<https://ocwebdocs.co.olmsted.mn.us/Forms/COVID19VaccinationPlanning>



Olmsted County Public Health
Nationally Accredited Health Department