

GRESHAM

2022 BUSINESS AND COMMUNITY MAGAZINE

Area

A New Career is Within Reach

All you have to do is take the first step.

Beginning your academic journey with Mt. Hood Community College is easy and we are here with ample student support services to help you on your path to success.

- Six-month certificate programs
- Two-year associate degrees
- Quality instruction



MT. HOOD
COMMUNITY COLLEGE

Learn more at mhcc.edu



You deserve a primary care provider who knows you. By name.

Who's taking care of you? You have a lot to juggle every day. Your health is just one more thing on the list. You deserve a team dedicated to keeping your health on track every day — especially when you're busy. That's where Adventist Health's primary care providers come in. We care about your whole life, not just today's injury or illness. In our Gresham Station or Troutdale clinics or online, get the care you need quickly.

Add Adventist Health Primary Care to your team:
503-261-6929



GRESHAM AND TROUTDALE | APPOINTMENTS: 503-261-6929

VISIT: [ADVENTISTHEALTH.ORG/PORTLAND/PRIMARYCARE](https://www.adventisthealth.org/portland/primarycare)

Contents

3

TOP 5 REASONS

Learn how buying local supports our merchants and grows the local economy.

4-7

YOUR GRESHAM AREA CHAMBER OF COMMERCE

Learn about what your local chamber does for the community, the benefits of membership and meet the Board.

8-9

RESILIENCE

Gresham businesses show their resilience during the pandemic.

10-11

GENEROSITY AND DEDICATION TO COMMUNITY

Family businesses are the heart of Gresham.

12-13

FLARE OF ARTISTRY

Outdoor public arts thrive in Gresham.

14-18

YOUR GUIDE TO PARKS AND SERVICES

Your guide to the parks and schools in the community as well as frequently requested numbers.

19-52

BUSINESS LISTINGS

By name and by category listings of all the local business members of the Gresham Area Chamber of Commerce.



Credits

The Gresham Area Chamber of Commerce and Visitors Center

1005 N Main Ave, Suite 101
Gresham, OR 97030
503-665-1131
Fax 503-666-1041
greshamchamber.org
gacc@greshamchamber.org
Instagram @greshamchamber

Publisher: Pamplin Media Group/ Contract Publishing Division

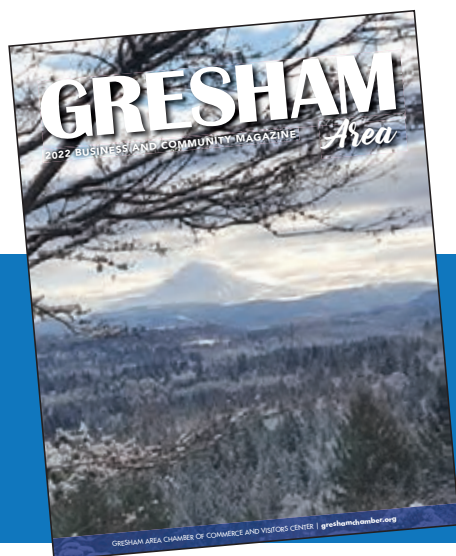
6605 SE Lake Road
Portland OR 97222
503-684-0360
PortlandTribune.com

Advertising + Marketing Chris Sweet

Graphic Design Matias Ricco

Database Manager Don Atwell

Contributing Photographers Visual Impressions Photography, LLC City of Gresham



ON THE COVER:

Gresham: A community where tradition and heritage meet innovation and opportunity. Experience the outskirts of Gresham, the scenic beauty of the countryside with parks, trails, and countryside experiences. Gresham's diverse population includes longtime residents, young professionals, families, and new immigrant communities. Gresham is a welcoming and dynamic community providing a high quality of life for its residents and businesses.

SHOP LOCAL



Bess Wills of Gresham Ford and Try Local First Champion, knows picking up the phone to shop is easy but shopping locally supports schools, fire, and police. Local businesses pay local taxes that support community infrastructure. One of the many reasons to shop local.

TOP 5 REASONS TO BUY LOCAL

1. Strengthen and support your local economy.
2. Create more good jobs.
3. Local business owners invest in community.
4. Environmental impact is reduced.
5. Non profits receive greater support.



“Entrepreneurs and their small enterprises are responsible for almost all the economic growth in the United States.

— Ronald Reagan

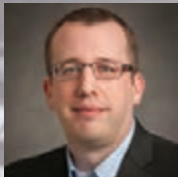
Buy
local
FIRST

WELCOME

Meet Your Leaders

CHAMBER BOARD

OFFICERS & EXECUTIVE COMMITTEE



PRESIDENT
Michael James
Business Operations
Manager,
The Boeing Company



**PRESIDENT
ELECT**
Leslie Parker
President,
HealthBenefits411



TREASURER
Al Nodarse
Account Executive,
Ooma Business, Inc.



**EXECUTIVE
COMMITTEE**
Kayla Viromentes
Owner,
The Bold Orange



**EXECUTIVE
COMMITTEE**
Warner Allen
Attorney,
Warren Allen, LLP



**EXECUTIVE
COMMITTEE**
Steve Brown
Editor/General Manager,
The Gresham Outlook/
Pamplin Media Group

BOARD MEMBERS



Ryan Golze
Executive Director,
Courtyard Fountains



Paul Green
Director of Outside Sales,
Ooma Business, Inc



Spencer Lund
Agent,
Farmers
Insurance Agency



Christina Price
Financial Advisor,
Edward Jones



Cathe Wiese
Executive Director
My Father's House,
A Community Shelter



Shane Spannaus
Senior Manager,
FedEx Ground



Andrew Speer
Local Government Affairs,
Portland
General Electric



Ken Anderton
Industrial Development
Senior Mgr,
Port of Portland



Brian York
Marketing Specialist,
Clackamas County Bank -
Gresham



Donivon McCord
Owner, McCord
Construction, LLC



Nina Carlson
Government &
Community Affairs,
NW Natural



Marguerite Truttman
Real Estate Broker
Premiere Property
Group, LLC



Eric Schmidt
EX-OFFICIO
Assistant City Manager
City of Gresham



Jordan Ely
EX-OFFICIO
CFO Gresham-Barlow
School District



Dr. Lisa Skari
EX-OFFICIO
President,
Mt. Hood
Community College

Say hello to your Chamber and Visitors Center staff



Lynn Snodgrass
CEO



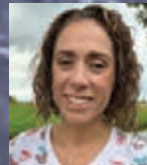
Vickie Moen
WorkReady Director



Hollie Miller
Account Executive



Angela Trambitas
Membership Manager



Erin Beggs
Sponsor & Event Manager



Chamber of Commerce
and Visitors Center

1005 N Main, Gresham, OR 97030
503-665-1131 • greshamchamber.org

JOIN THE CHAMBER - CHAMBER WORKS!



ADVOCATE: The Gresham Area Chamber of Commerce brings government advocacy to you while representing business and member interest regionally and locally.

EDUCATE: The Chamber provides many opportunities for exposure through advertising in print, online, social media and through sponsorships, programs, and events.

COLLABORATE: The entire Chamber staff focuses on providing a positive impact to your bottom line whether revenue or expenses. Networking opportunities are available morning, noon, and night.

Advocate Educate Collaborate



MEMBER SPOTLIGHT

PRESIDENT'S CIRCLE SPOTLIGHT

THE BOEING COMPANY

www.boeing.com

Boeing is the world's leading aerospace company and the largest manufacturer of commercial and military aircraft combined. The company employs more than 170,000 people globally.

GRESHAM-BARLOW SCHOOL DISTRICT

www.gresham.k12.or.us

The Gresham-Barlow School District's mission is to prepare every student for success through the development of the skills necessary for a lifetime of learning, career opportunities, and productive contributions to the community.

GRESHAM SANITARY SERVICE

www.greshamsanitary.com

Happily serving Gresham and Portland since 1948. With customer satisfaction in mind, we offer the best eco-friendly services for our customers that are professional and fast, as well as honest and cost effective.

METRO EAST WEB ACADEMY

www.mewebacademy.org

The Metro East Web Academy is an online public charter school approved by the Oregon Department of Education. The school's web-based curriculum meets Oregon state standards and Highly Qualified teachers provide the instruction. Each academy student receives a personalized education program designed to meet their unique needs.

PORTLAND GENERAL ELECTRIC

www.portlandgeneral.com

PGE is a recognized leader in the utility industry and has safely and dependably powered northwest Oregon since 1889. PGE works hard to keep Oregon a great place to live, and we reflect our customers' values through our environmental initiatives and community involvement.

DIAMOND MEMBER SPOTLIGHT

CITY OF GRESHAM

www.greshamoregon.gov

City of Gresham provides valuable municipal services that make Gresham an ideal place to live, work and play.

COLUMBIA BANK

www.columbiabank.com

Columbia Bank is a Northwest community bank with comprehensive solutions and expertise to meet the evolving needs of businesses and individuals. Most importantly is that we've maintained our dedication to being THE community bank in each and every community we serve.

EDWARD JONES / CHRISTINA J. PRICE

www.edwardjones.com

Edward Jones is a financial services firm headquartered in St. Louis, Missouri. It serves investment clients in the U.S. and Canada, through its branch network of more than 14,000 locations.

GRESHAM FORD

www.greshamford.com

Gresham Ford, Dealer with a Heart, offers vehicles for you and your business, as well as service for all makes and models including competitively priced brakes, batteries and tires.

METROEAST COMMUNITY MEDIA

www.metroeast.org

A vibrant, thriving and state-of-the-art studio that has been in the community for 31 years. Providing production on MetroEast channels as well as on the web, allowing their work to be seen around the world.

MT. HOOD COMMUNITY COLLEGE

www.mhcc.edu

Mt. Hood Community College offers more than 70 associate degrees, certificate programs and transfer options in a wide variety of disciplines.

REYNOLDS SCHOOL DISTRICT

www.reynolds.k12.or.us

The vision of the Reynolds School District is each and every child be prepared for a world yet to be imagined. A broad range of career technical education, hands on learning programs, visual and performance arts, languages, physical education courses, activities and athletics are offered.

SERVPRO OF GRESHAM

www.servprogresham.com

SERVPRO is a franchisor of fire and water cleanup and restoration franchises in the United States and Canada. The franchise system provides localized services as well as large scale disaster recovery.

THE COOLEY GROUP COUNTRY FINANCIAL

representatives.countryfinancial.com/luke.cooley

COUNTRY Financial is a group of US insurance and financial services companies with customers in 39 states. The group of companies offers a range of insurance and financial products and services, including auto, home, life, and commercial insurance, and retirement planning, investment management and trust services.



Resilience of the Gresham business community during pandemic

By Shelley McFarland

Gresham has always been a plucky little town. From sawmills to berry farms, Gresham's business community is an industrious lot, and the COVID-19 pandemic has tested their mettle.

Independent retail stores like **Shop Girl Consignment** Gresham were hit hard with closures and like other businesses, the shop learned to pivot to keep staff and customers safe while continuing to generate revenue. Business owners also learned to lean on each other for support and information.

"The hardest part of the pandemic was being overwhelmed by the stress and anxiety of all the uncertainty and changing rules. I saw other business owners pivoting to new avenues of revenue, and I honestly just felt stuck, deeply worried how we would make it through," Shopgirl Consignment Thea Enos said. "The shops in downtown Gresham supported each other by sending encouraging messages to each other, sharing ideas, and communicating about opportunities for grants and government funding to keep our doors open. We sent customers to each other's places and shopped with each other as much as we could, and I wrote posts promoting the downtown businesses. At Shop Girl Consignment, we frequently ordered takeout from our local restaurants and talked them up whenever we could. I love the downtown Gresham community!"

Leslee Dirk, Broker ERA Freeman & Associates explains that her business wasn't affected too much because real estate stayed "consistently strong," but brokers modified how business was conducted with online meetings and COVID-safe showings. Like Enos, Dirk found ways to support Gresham businesses.

"Gresham is a tight community and



people that could afford take out when restaurants were shut down would visit and purchase take-out meals as much as they could," Dirk said. "My family would shop locally and make it a point to stay in the area for anything we needed."

One of the hardest hit industries over the last 18 months has been veterinary services. Animal adoptions hit record numbers and pet owners were home to see possible ailments in their animal causing practices to be overbooked. Practice Owner David Hawkins from **Dogwood Pet Hospital** faced staff shortages from employee needing to stay home with their children when schools and daycares closed.

"We have had to work extremely hard to just see our own patients, let alone overflow patients from other practices," Hawkins said. "We

lost two emergency practices on the metro east side due to their own staffing losses and our team has had all the other stresses compounded by having to repeatedly tell pet owners that no, we can't see your pet.

“
Believe me, we help as much as we can. That's why we are here.

— David Hawkins, Dogwood Pet Hospital

RESILIENCE

I personally have had days where I turned away 20 or more pet owners who called. For almost a year we were turning away all non-clients because we can only do so much and have to protect the staff we have."

Though business in the veterinary industry is booming, compassion fatigue is rampant, and staff are trying their best to provide service while protecting themselves.

"We are tired. Not just my team, but the whole industry. There have been no slow periods, and nobody can get the vacations they need, as so many vacation options have their own COVID restrictions and closures, plus everyone is reluctant to leave their team short-staffed so they can take a few days off. Practices can't replace doctors - there are reportedly 13.5 jobs per veterinarian looking now," Hawkins explained. "The rate of veterinarian and veterinary technician suicide is climbing. We are struggling to get the medical supplies, drugs, and diets our patients need. Many practices that started to allow clients inside at least for the exams are now returning to the curbside model because of the increasing COVID threat - we never did open our doors this summer, and that upsets a lot of pet owners that take it out on us. Believe me, we help as much as we can. That's why we are here." While many brick-and-mortar businesses like restaurants struggle with lockdowns and occupancy percentages, Gresham's **Sun Glow Heating and Cooling** has a unique situation: fixing heating and cooling units requires technicians to enter peoples' homes. When the pandemic hit, it had an immediate negative impact on business revenue.

"There were a lot of people concerned about the virus and didn't want our technicians or installers in their home," Sun Glow Heating and Cooling owner David Golobay said. "As time progressed, we saw people loosening up and becoming more comfortable with the new norm of protocols and understanding they needed these systems. After two months business began soaring, due in part to some people having more expendable income as many of them were not traveling and were receiving stimulus checks. After those first two months we have seen record growth in nearly every category of our business in



both residential and commercial sectors. Golobay was proud of how rapidly Sun Glow was able to adjust to comply with protocols and offered his employees 40 hours pay, regardless of work available. The changes included remote offices and investment in a phone system that allowed remote work with ease, virtual sales, remote service calls, when possible, PPE and diluted bleach water cleanings, office disinfection and bagging all air filters before leaving the home to not cross contaminate clean air filters.

"Our clients loved how we worked hard to ensure the health and well-being of their entire household. We in fact have a lot of reviews where people have commented specifically about our COVID protocols and how it made them feel safe," Golobay said. Like Dogwood Pet Hospital, Mt. Hood Hospice continues to face staffing shortages.

"We had to quickly put in some updates to our phones and IT services, so we had the ability to make visits through technology and do more meetings remotely and we are still having issues with staff and hiring. Though we are posting ads RNs and CNAs are not applying. It's costing a lot of money," Jolie Phantom, Community Outreach and Volunteer Coordinator at **Mt. Hood Hospice** said. "Our census has been very low, we think because of COVID people are not going to their doctors, no diagnosis of terminal illness. Less

patients means less money coming in to cover administrative costs. We were able to negotiate a new lease and will be moving to a smaller, combined space in the same building, which will cut our rent fees in half."

From March 2020 until July 2021, volunteers that visit patients to offer social and emotional support were unable to do so and offering hospice services continues to be fraught with obstacles for the nonprofit.

"Volunteers play a crucial role in the care of hospice patients, and it was detrimental to patients and families alike. Because of the mandates and vaccine requirements, almost a half dozen volunteers have decided to retire. We were planning on having a new volunteer training in September, but due to all the changes it may have to be postponed. This will also have an impact on our volunteer base and the services we offer to patients and families," Phantom explained. "We were unable to do community events and education to help bring awareness about hospice. There wasn't really a way to overcome this, however we have amped up our social media with educational posts. We are a small, nonprofit organization and can't maintain functionality without enough qualified staff. We are also unable to offer hiring bonuses and things that larger corporations can include in their packages."

GENEROSITY FROM THREE *auto business families*

Like many Oregon cities, the Gresham area has its share of car dealers. But it would be hard for other cities to meet the generosity level or dedication to community these three auto families demonstrate.

While the old clichés of car dealer salesmanship might be alive and well in other parts of the country, you will not find that in the Gresham area. Gresham Ford, Suburban Auto Group and Weston Kia, Buick, GMC — all family-owned businesses — pride themselves at being above the old school rhetoric. After all, their names are on the sign. Family members are working the floors greeting customers and helping every way possible.

"Mom reminds me all the time. ... Our customers have spent their precious time getting here," says Preston Wills, son of Bess Wills,



general manager, Gresham Ford. "We need to spend quality time with them making sure their experience is positive, informative, and respectful."

"Take care of the customer and they will take care of you." Jim Weston told his grandsons Josh and Jacob, third generation at Weston Kia, Buick, GMC.

"Dad told me to always do the right thing and take care of the customer," Nancy Jaksich, owner of Suburban Auto Group says of her father, Pete Carlson.



COMMUNITY

Combined, the three dealership families have been in Gresham area for more than 120 years. All three are in the second or third generation of ownership, passing down tradition, work ethic and opportunity to their children, plus giving back not only as an economic engine but to nonprofits in need.

Gresham Ford, dealer with a heart, is a transplant (from California) but you would not know it by how deeply involved Wills is in the nuts, bolts, and heart of the community. She arrived in Oregon to take over McRobert Ford, another Gresham-area family business, only to find that the space was not large enough for her dreams of growth. Right across the street was yet another family-owned auto dealership, Murray Chevrolet. Steve Murray was retiring just in time for Wills' hope of expansion. So,



Family businesses are the heart of Gresham and surrounding towns. In this case three family businesses are competitive, generous givers and literally rev up the community

across the street they went. Gresham Ford invested heavily in the community with its million-dollar remodel. The investment doesn't stop there. Wills and her dealership are known for hundreds of volunteer hours and hundreds of dollars to local nonprofits like My Father's House, SnowCap Community Charities, Gresham Rotary and Gresham-Barlow Education Foundation.

Suburban Auto Group, a Chevrolet store on the western edge of Sandy, is no stranger to community giving and dedication. Many Suburban Group employees, from the office to the sales and service departments, have been with the company since the beginning. Gresham residents Nancy and husband Jerry also are preparing for the future as two of their four children take their place in the family business. Daughter Erinn Sowle came on board in 1996 as general manager for the Ford store and is now an owner. Their youngest daughter, Megan, began working at the dealership in recent years. "Megan's been here since the cradle," Nancy said. "We changed her diapers on the showroom floor." Passing on the reins to children is a joy and blessing and can be a tricky responsibility. The Suburban Auto Group is thriving in its succession plans as it maintains a strong commitment to customer satisfaction and to supporting community nonprofit groups such as Guide Dogs for the Blind and the Mt Hood Community College Foundation.

Owning a successful car dealership is hard work. Long hours,

narrow margins, stiff competition. When there is profit to be made, it certainly could be spent on fancy houses and overseas trips. But what happens in the neighborhood community is a priority to the Weston family.

For the past 20 years, the Westons have loaned cars to the Salvation Army to pick up and transport donation kettles during the holiday season, as well as to get gifts to children on Santa's good list. Jim Weston, founder of the dealership, is a former member of the Salvation Army advisory council and has supported the army for decades. When the Salvation Army's Phase 2 of its capital campaign came up \$116,000 short, the Westons stepped up with the amount needed for completion. Serving the needs of the community with this strategically placed facility was an easy decision for the Westons.

All three dealerships have won their respective corporate Presidents' Awards. All three have expanded or remodeled their facilities, investing back into the community. And all three have leadership roles in local boards such as the chamber and education foundations.

All three dealerships exhibit the type of business ethic the Gresham area can be proud of — as solid employers, generous givers with long lasting roots in our back yard.

GRESHAM'S CONTINUED *flare of artistry*



By Shelley McFarland

In the heart of Gresham is Main Street, a true downtown and the envy of other cities. What makes Gresham special though, is its art scene and the contributions of community members to have art reflect the history and diversity of Gresham life.

In a few short years, nonprofit Gresham Outdoor Public Art (GOPA) has improved the art landscape in downtown with carefully selected pieces. Judy Han, co-owner of Sunny Han's Wok & Grill started Gresham Art Walk (precursor to her work with GOPA) 19 years ago and turned it over to the City of Gresham eight years ago.

"In 2013, I approached Mayor Bemis and said I needed to give Art Walk to the city, and I would mentor them through it if they would take it on," Han remembers. "The event needed to grow and change; it was evolving, and it had a good foundation. Mayor Bemis said absolutely

this event was not going to end. I always felt supported by Mayor Bemis and the City of Gresham over the years, and it was Mayor Bemis who saw the importance of the arts in the community. Its why it is still going today."

Now called Gresham Arts Festival, in 2019, the festival brought in over 20,000 attendees who supported Gresham businesses while at the celebration. After the city took the festival, Han approached Bemis again about bringing permanent outdoor art to Gresham. When asked if there was a map for public art, she was informed there wasn't one.

"Mayor Bemis said if I could put an art program in place, he and the city would support it," Han said. "Our GOPA board looked at what other cities were doing and used their outlines. We brought our

plan to the city, and they stepped right up, from putting in the necessary paperwork to establishing how art needed to be placed on the street. We worked with all the departments of the city."

“
*Who builds a
statue for an
ordinary citizen?
Gresham does!*

— -GOPA President, Judy Han

”



Han, President of GOPA, started asking residents for help including sculpturists Rip and Chad Caswell and Heather Soderberg-Greene, and approached organizations like the Lions Club for donations. Driscoll, the guide dog was first sculpture placed in Gresham because he trained in downtown. Next was the teddy bear on the bench in honor of the Gresham Soroptimists who run the popular Teddy Bear Parade each fall. The mural on the side of Jazzy Bagels was completed by Don Gray who explained the building used to be Rexall drug store and was the center of Gresham for years. Chad and Rip Caswell supported the project with Otter and Raven in Nadaka Nature Park and Garden in nearby Rockwood. In true community spirit, more people and organizations joined in to provide art. "Mt. Hood community College Students did a piece for us on Third Street," Han explained. "And 'Blue' a heron sculpture stands watching over us on Main Ave. 'Bless this Nest' was supported by the Chamber of Commerce and in June, we installed a sculpture called 'Sunday at the Carnegie,' which depicts a couple walking arm-in-arm wearing clothing from the turn-of-the-century celebrating Gresham's history." Holding a coffee delivery and in a Trailblazer jersey, the statue of Mr. Gresham, Todd Kirnan, holds a special place in the hearts of Greshamites.



Kirnan has been seen walking downtown where he runs errands or delivers food to businesses. "Mayor Bemis came and asked about a statue of Todd. To many of us that have businesses downtown, Todd is especially important. He is Uber on legs," Han jokes. "Heather Soderberg-Greene created the sculpture with funds raised from people in the community. Todd would bring me envelopes of money and say, 'This is for my statue.'" All the funds were from local donations and when Steve Hartman of CBS News heard about it, he came to meet Todd at the unveiling. We had a parade, and it was just awesome. Who builds a statue for an ordinary citizen? Gresham does!" Han stresses that all the efforts from

the GOPA board, artists and citizens was supported from all the departments in the City of Gresham. It has been a collaborative effort. "One thought I have always had is Gresham Outdoor Public Art is the bridge and art is the vehicle that bridges people. In Gresham, 57 languages spoken. We celebrate our diversity in our community and come together to have a better understanding of those who are different than us," Han explained. "The arts are for everybody. People say, 'Portland is Weird' but I say, 'Gresham is Real.' The art we have in Gresham is a direct reflection of who we are. It was intentional. Gresham is a big city, but it has the heart of a small-town community."



GATEWAY TO GRANDEUR: *East County exploration and recreation*

By Shelley McFarland

It's been said that East County is the gateway to the Columbia River Scenic Area, the pristine canyon carved out millions of years ago and held in care by Oregonians. And though the Gorge is a shiny gem in a treasure chest of jewels, that gateway opens to Northwest lands ready to be explored along with East County, too.

COLUMBIA RIVER GORGE

Sitting like a sentinel, Crown Point offers a front-row seat to the Columbia River and the Cascade mountains beyond. More than 90 waterfalls cascade over virgin land, river winds propel wind and kite surfers, hundreds of miles of hiking trail line both sides of the gorge from elevations up to 4,000 feet above sea level. The Historic Columbia River Highway allows for road cycling connecting Troutdale and The Dalles through 75 miles of scenic wonderment. Recreationists need sustenance and the Columbia River Gorge is lined with memorable eateries from McMenamin's Edgefield in Troutdale to wineries and fresh fruit dotting the landscape throughout the Fruit Loop in Hood River. From stand-up paddle boarding to riding electric bicycles, recreation is only limited to imagination.

MT. HOOD AND BEYOND

If the Columbia River Gorge shines in summer, Mt. Hood obviously comes alive during winter when snowshoers, skiers, snow mobilers, climbers and cold-weather enthusiasts take to the powder. Beyond the mountain, lies ghost towns like Shaniko, the Painted Hills, John Day Fossil Beds National Monument, vast expanses of farmland, and natural hot springs. If you look close enough, you can find wagon ruts from the Oregon Trail days.

GRESHAM

From Gresham, the Portland International Airport is only 10 miles away bringing in adventure-tourists from around the world to climb the nation's third tallest mountain, Mt. Hood or windsurf top-rated swells on the Columbia River near Hood River, but don't pass up Gresham for outdoor activities. Gresham Butte Park is the newest park in Gresham and sits atop Hogan Butte with 46 acres to explore including the "Volcanic Viewpoint" where at 930 feet, visitors can see a panoramic view of Mt. Hood, Mt. St. Helens, Mt. Adams, Mt. Rainier, and the Columbia River Gorge. In Troutdale, be sure to visit the Sandy River Delta Park, or Thousand Acres, where dogs and people can walk, mountain bike or bird watch in the off-leash area of 1,400 acres of open fields, wetlands, trails and two rivers.

EAST COUNTY BIKING

With over 350 miles of designated bikeways, Portland is a bicyclist's paradise which extends into East County. The southeast segment of the 40-Mile Loop is the Springwater Corridor connecting Portland to Boring where bicyclist, runners and walkers can enjoy the greenway landscape while connecting to different parks, like Powell Butte Nature Park and Gresham Main City Park. Further east, the Historic Columbia River Highway offers some of the most beautiful scenery in America for cyclists. The Mosier Twin Tunnels (carved from solid basalt in 1921) is a 4.5 mile stretch from Hood River to Mosier and for a longer ride of 31 miles alongside automobiles, consider starting from Troutdale's Glen Otto Community Park and end at Cascade Locks Marine Park. "Gresham offers over 47.2 miles of bike lanes, 18.8 miles of multi-use paths and two miles of Gresham Greenways," Tam Driscoll Gresham's Community Outreach Specialist said. "There's ample low-speed routes on local streets that connect to local destinations. Stop at the beautiful Tsuru Island Japanese Garden located in Main City Park and there's the vibrant historic Gresham downtown with many wonderful restaurants and businesses to support."



2022 COMMUNITY EVENTS

FIRST FRIDAY ART WALKS IN TROUTDALE
Every Month

FAIRVIEW OPEN AIR MARKET
Every Thursday
April through October

GRESHAM SATURDAY MARKET
Every Saturday
April through September

TROUTDALE FARMERS AND ARTISTS MARKET
Every Saturday
April through November

LILAC RUN
3rd Saturday in April

EARTH DAY
3rd or 4th Saturday in April

THIRD THURSDAY IN GRESHAM
May through August

GRESHAM FARMERS MARKET
Every Saturday
May through October

PLAY BALL
3rd Thursday in June

MUSIC MONDAYS
Mondays
July through August

SANDY MOUNTAIN FESTIVAL
Second Saturday and Sunday in July

HIGHLAND GAMES
Third Saturday in July

GRESHAM ARTS FESTIVAL
Third Friday and Saturday in July

TROUTDALE SUMMERFEST
Third Saturday in July

BITE OF EAST COUNTY
Last Friday and Saturday in July

SOULFUL GIVING: BLANKET CONCERT
First Saturday in August

CRUZIN' THE BLOCK CAR SHOW
Second Saturday in August

FAIRVIEW ON THE GREEN
Third Saturday in August

WOOD VILLAGE NITE OUT
Third Friday in July

FAIRVIEW NATIONAL NIGHT OUT
First Tuesday in August

CITY FEST
2nd Saturday in September

TEDDY BEAR PARADE
Last Saturday in September

FALL FESTIVAL OF THE ARTS
Fourth Saturday and Sunday in September

SAFE TRICK OR TREAT
October 31st

SPIRIT OF CHRISTMAS
November 30th

PORTLAND COLUMBIA SYMPHONY
See pcsymphony.com for concerts

Parks

The parks in the area include more than 300 acres of land, **840 acres** of natural areas and miles of trails, many suitable for walking, jogging, biking, rollerblading, strollers, and horseback riding. Also housed here is **Gradin Community Sports Park with 32-acres** of soccer fields, softball fields, picnic shelters, and basketball courts. **Main City Park** in downtown Gresham, not only has a beautiful Japanese garden to stroll through, but a skate park for the avid boarder.

PARK NAME	Address	Acres	Baseball Field	Basketball Court	Community Garden	Disc Golf	Forest Areas	Group Picnic Shelter	Horseshoe Pit	Jogging Path	Open Lawn Area	Parking	Paths	Picnic Tables	Play Equipment	Pond	Restrooms	Skateboard Area	Soccer Fields	Softball Fields	Tennis Court/Wall	Tot Lot
Arts Plaza	401 NE Second St.										•		•	•	•		•					
Aspen Highlands	147 NE 24th St.	3.7		•							•		•	•								
Bella Vista	401 NW Bella Vista Dr.	8.1		•							•		•	•	•							•
Blue Lake	20500 NE Marine Drive	64					•				•	•	•	•	•	•	•					
Butler Creek	2385 SW 27th Dr.	4		•			•				•		•	•	•						•	•
C.P. Park	1212 SW 28th St.	0.71	•	•										•	•							
Cedar	601 NE 8th St.	0.3									•		•	•								
Center for the Arts	400 NE 3rd St.																					
Chinook Landing	NE 223rd Avenue & Marine Drive	67									•	•	•	•			•					
Cleone	2063 NE 213th Ave.	4		•	•			•			•		•	•								
Columbia/Imagination Sta.	1900 SW Cherry Park Road	19.9	•				•	•			•	•	•	•	•		•		•			
Columbia View	1000 NE 169th Avenue	7.5					•															
Davis	322 NE 194th Ave.	2.6		•							•		•	•				•				•
Depot	473 E Historic Columbia River Hwy.	2.25									•	•	•	•								
Donald L Roberston	NE Halsey & 244th	3	•	•			•	•				•	•		•		•		•			
East Gresham	237 SE Williams Road	5.6					•															
Fairview Community	21600 NE Park Lane	1									•		•	•	•							
Fairview Woods	460 Bridge St.	8					•						•									
Glenn Otto	1102 E Historic Columbia River Hwy.	6.38					•	•			•	•		•	•		•			•		
Gradin Community	2303 SE Palmquist Road	32.3	•							•	•	•	•	•	•		•		•	•		
Hall	2727 NE 23rd St.	4								•	•								•	•		
Handy	120 1st St.	0.5									•			•	•							
Harlow House	726 E Historic Columbia River Hwy.	1.4									•	•	•									

PARK NAME	Address	Acres	Baseball Field	Basketball Court	Community Garden	Disc Golf	Forest Areas	Group Picnic Shelter	Horseshoe Pit	Jogging Path	Open Lawn Area	Parking	Paths	Picnic Tables	Play Equipment	Pond	Restrooms	Skateboard Area	Soccer Fields	Softball Fields	Tennis Court/Wall	Tot Lot
Hogan Butte Nature Park	757 SE Gabbert Rd.	46					•	•				•	•	•			•					
Hollybrook	535 SW Birdsdales Dr.	2.6									•		•						•			
Jenne Butte	2358 SW Border Way	6.7					•				•					•						
Kane Road	500 NE Kane Dr.	10.3					•				•	•	•	•	•							
Kiku	1800 SW Beaver Creek Lane	2.62		•									•	•	•							
Kirk	1087 NE 188th Ave.	7									•		•	•					•	•		
Lakeshore	3653 NE 217th Ave.															•						
Lewellyn	1700 SE Lewellyn Avenue	2.39										•	•	•	•						•	
Main City	219 S Main Ave.	21.6	•	•				•	•		•	•	•	•	•		•					•
Main City Skate Park	219 S Main Ave.																	•				
Mayors Square	E Historic Columbia River Hwy & SE Dora	0.75									•											
Nadaka Nature Park	17550 NE Pacific St.	10			•		•						•		•		•					
North Gresham	1111 SE 217th Ave.	13.4					•			•	•				•				•	•		
Oxbow Regional Park	3010 SE Oxbow Pkwy	1000				•	•	•			•	•	•	•			•					
Pat Pfeifer	424 NE 172nd Ave.	13.3	•				•				•		•	•	•		•		•			
Pelfrey	21089 NE Fairview Lake Way	1.7									•	•		•	•							
Red Sunset	2403 NE Red Sunset Dr.	14.2	•	•				•			•	•	•	•	•	•	•		•	•	•	•
Rockwood Central	17707 SE Main St.	9.4	•	•		•	•				•	•	•	•	•		•		•	•		
Salish Ponds	20620 NE Glisan Street	8											•			•	•					
South Central	4437 SE Regner Road	29.6					•															
Sandee Palisades	1206 SE 26th Street	4.62										•	•	•	•					•		
Southeast Community	5600 SE Salquist Road	16.1					•															
Southeast	3003 SE Barnes Road	6.5					•															
Southwest Community	3333 W Powell Blvd.	34.1					•															
Sunrise	460 SW 21st	15.76											•	•								
Sweetbriar	3501 SE Evans Ave.	1.38											•	•	•							
Thom	1135 SE 9th St.	5.5									•		•	•								
Vance	1400 SE 182nd Ave.	14.5			•	•	•						•	•	•				•	•		
Weedin	1323 SE Beaver Creek Lane	2.52		•								•	•	•	•						•	
Woodale Park	2326 SW Beaver Creek Lane	2.5									•		•									
Yamhill	19309 SE Yamhill St.	0.6		•	•						•	•		•								•
Zimmerman Heritage	17111 NE Sandy Blvd.	5.98																				

SCHOOLS, BUSINESS, COMMUNITY & GOVERNMENT RESOURCES

GRESHAM-BARLOW SCHOOL DISTRICT

503- 261-4550

ELEMENTARY SCHOOLS

East Gresham 503-661-6050
East Orient 503-663-4818
Hall 503-661-6330
Highland 503-665-7158
Hogan Cedars 503-261-4500
Hollydale 503-661-6226
Kelly Creek 503-663-7483
North Gresham 503-661-6415
Powell Valley 503-661-1510
West Gresham 503-661-0144

K-8 SCHOOL

Deep Creek - Damascus
503-658-3171

MIDDLE SCHOOLS

Clear Creek 503-492-6700
Dexter McCarty 503-665-0148
Gordon Russell 503-667-6900
West Orient 503-663-3323

HIGH SCHOOLS

Gresham 503-674-5500
Sam Barlow 503-258-4850
Springwater Trail 503-261-4600

CENTENNIAL SCHOOL DISTRICT

503-760-7990

ELEMENTARY SCHOOLS

Butler Creek 503-762-6100
Meadows 503-762-3208
Oliver 503-762-3207
Parklane 503-762-3205
Patrick Lynch 503-762-3203
Pleasant Valley 503-762-3209
Wood 503-762-3204

MIDDLE SCHOOLS

Centennial 503-762-3206

HIGH SCHOOLS

Centennial 503-762-6180

REYNOLDS SCHOOL DISTRICT

503 661-7200

ELEMENTARY SCHOOLS

Alder 503-255-4673
Davis 503-665-9193
Fairview 503-667-2954
Glenfair 503-252-3479
Hartley 503-665-0134
Margaret Scott 503-255-2031
Salish Ponds 503-492-7260
Sweetbriar 503-666-9441
Troutdale 503-665-4182
Wilkes 503-255-6133
Woodland 503-674-8188

MIDDLE SCHOOLS

H.B. Lee 503-255-5686
Reynolds 503-665-8166
Walt Morey 503-491-1935

HIGH SCHOOLS

Reynolds 503-667-3186

COLLEGES

Mt. Hood Community College
503-491-6422

Warner Pacific
503-517-1020

EDUCATIONAL OPTIONS

CAL - Center for Advanced Learning
503-667-4978

Centennial Park School
503-762-3202

Centennial Transition Center
503-762-3715

Eastern Oregon University
503-491-7550

Four Corners
503-328-0420

Grand Canyon University
602-247-4527

Gresham Arthur Academy
(Mastery Learning Institute)
503-667-4900

KNOVA Learning
503-907-1023

Lewis & Clark Montessori
Charter School
503-427-0803

Metro East Web Academy
503-258-4790

Multisensory Learning Academy
Elementary
503-405-7868

Multisensory Learning Academy
Middle
503-912-3900

Multnomah Learning Academy
- K-8 Public Charter School
503-405-7868

Reynolds Learning Academy
503-667-4673

Rockwood Preparatory
Academy
503-907-1023

Rosemary Anderson High
School
503-797-7226

BUSINESS RESOURCES

City of Gresham Small Business
Center
503- 618-2872

Mt. Hood Community College
Small Business Development
Center
503-491-7658

Gresham Area Chamber of
Commerce & Visitors Center
503-665-1131

East Metro Economic Alliance
503-292-8881

Business Oregon
503-986-0123

Greater Portland Inc.
503-445-8065

Worksource Portland Metro East
503- 669-7112

Oregon State Business Page
[www.oregon.gov/business/
pages](http://www.oregon.gov/business/pages)

Small Business Administration
www.sba.gov

SCORE (Service Corp of Retired
Executives)
www.portlandor.score.org

Travel Oregon
800-547-7842
www.traveloregon.com

COMMUNITY RESOURCES

EMERGENCY SERVICES

Non-Emergency
503- 823-3333

Fire Department
503- 618-2355

Police Department
503- 618-2318

Multnomah County Sheriff
503- 988-7300

LIBRARIES
Fairview-Columbia Library
503- 988-5123

Gresham Regional Library
503- 988-5123

Rockwood Library
503- 988-5123

Troutdale Library
503- 988-5123

NEWSPAPERS

Portland Tribune
503-684-0360

The Oregonian
503-221-8327

The Outlook
503- 665-2181

SENIOR SERVICES

Ambleside Meals on Wheels
People
503- 953-8201

Gresham Senior Center
503- 988-4870

STATE & FEDERAL SERVICES

Department of Motor Vehicles
503- 945-5000

Metro
503-797-1700

ODOT
888-275-6368

Oregon Parks and Recreation
800-551-6949

TriMet Bus & Light Rail Service
503- 238-7433

Veterans Affairs
503- 373-2000

Voter Registration
Clackamas County
503- 655-8510

Multnomah County
503- 988-3720

Worksource Portland Metro East
503- 669-7112

UTILITIES

Northwest Natural (Gas)
503- 226-4211

Portland General Electric
(Electric)
800-542-8818

Gresham Sanitary Service
(Garbage)
503- 665-2424

Waste Management of Oregon
(Garbage)
(800) 808-5901

City of Fairview (Water)
503- 674-6215

City of Gresham (Water)
503- 618-2373

City of Troutdale (Water)
503- 674-7232

City of Wood Village (Water)
503- 667-6211

Frontier (Internet & Phone)
(800) 921-8101

CenturyLink
(Cable, Internet & Phone)
(877) 837-5738

Comcast
(Cable, Internet & Phone)
(855) 319-2126

DirectTV
(Cable, Internet & Phone)
(855) 567-1669

VISITOR INFORMATION

Gresham Area Chamber of
Commerce & Visitors Center
503- 665-1131

West Columbia Gorge Chamber
of Commerce
503- 669-7473

Travel Portland
503-275-8355

GOVERNMENT RESOURCES

LOCAL GOVERNMENT

FAIRVIEW CITY HALL
503-665-7929
www.fairvieworegon.gov

GRESHAM CITY HALL
503- 661-3000
www.greshamoregon.gov

TROUTDALE CITY HALL
503- 665-5175
www.troutdaleoregon.gov

WOOD VILLAGE CITY HALL
503- 667-6211
www.ci.wood-village.or.us

CLACKAMAS COUNTY
503- 655-8459
www.clackamas.us

MULTNOMAH COUNTY
503- 823-4000
web.multco.us
Multnomah County
Commissioners
Deborah Kafoury, Chair
503-988-3308
Sharon Meieran, District 1
503-988-5220
Susheela Jayapal, District 2
503-988-5219
Jessica Vega Pederson, District 3
503-988-5217
Lori Stegmann, District 4
503-988-5213

STATE & FEDERAL LEGISLATORS

U.S. SENATE

Jeff Merkley (D) 503-326-3386

Ron Wyden (D) 503-326-7525

U.S. REPRESENTATIVE

Earl Blumenauer (D)
503--231-2300

STATE SENATE

Senator Laurie Monnes
Anderson, District 25
503- 986-1725

Senator Chuck Thomsen,
District 26 503-986-1726

STATE REPRESENTATIVES

District 25: Senator
Chris Gorsek 503-986-1725

District 26: Senator
Chuck Thomsen 503-986-1726

District 49: Representative
Zach Hudson 503-986-1449

District 50: Representative
Ricki Ruiz 503-986-1450

District 51: Representative
Janelle Bynum 503-986-1451

District 52: Representative
Anna Williams 503-986-1452

DEMOGRAPHICS/ CLIMATE

POPULATION
City of Gresham - 111,000

INCOME & EXPENSE
Median Household
Income.....\$47,706
Average Home
Price.....\$338,450
Average Rental.....\$1,216

AVERAGE TEMPERATURE
Spring.....43° - 61° F
Summer.....55° - 78° F
Fall.....46° - 63° F
Winter.....36° - 46° F

GRESHAM'S MOST *preferred* BUSINESS LISTINGS *by Name*

A-1 LAWN & GROUNDS MAINTENANCE INC.

GARDEN & LANDSCAPING
1123 SE 144th, Portland 97233
mmeader@comcast.net
Michael Meader.....(503) 254-9458

A.C.T. PLUMBING INC.

PLUMBING
702 SE Paropa Ave., Gresham 97080
deannaclemens@actplumbinginc.com |
www.actplumbinginc.com
Deanna Clemens.....(503) 912-0758

ACCENT ON ATTITUDE

RETAIL - SPECIALTY
20 NW 2nd Street, Gresham 97030
accentonattitude@gmail.com
Judy Wylie(503) 912-0332

ACCUPRINT

PRINTING, COPYING & SHIPPING
265 NE 2nd Street, Gresham 97030
production@accuprint-inkupinc.com |
www.accuprint-inkupinc.com
Jenni Oldenburg(503) 667-3100

ACE HARDWARE

RETAIL - SPECIALTY
16345 SE Division Street, Portland 97236
stuart@portlandacehardware.com |
www.acehardware.com
Stuart Compton.....(503) 477-8829

ADVANCED CARE CHIROPRACTIC

HEALTHCARE - ALTERNATIVE
837 E Powell Blvd., Gresham 97030
officemanager@advancedcarechiro.com |
www.advancedcarechiro.com
Marnie Vroom.....(503) 669-9495

ADVANTAGE INTEGRATED PEST ELIMINATION

PEST CONTROL
advantageipe@gmail.com |
www.advantageipe.com
Bruce Gaddy(503) 781-8357

ADVANTIS CREDIT UNION

BANKING & CREDIT UNIONS
2229 NE Burnside Rd, Gresham 97030
fchase@advantiscu.org | www.advantiscu.org
Felicia Chase.....(503) 785-2528

ADVENTIST HEALTH PORTLAND

HEALTHCARE - MEDICAL
10123 SE Market Street, Portland 97216
PeaseH@ah.org |
www.adventisthealth.org/portland
Heather Pease(503) 257-2500

AFFORDABLE HOME REMODELING

HOME IMPROVEMENT BUILDING SERVICES
Gresham 97030
info@newwindowportland.com |
newwindowportland.com
Ari Q.....(503) 489-2130

AKROS MARKETING

ADVERTISING - MARKETING & WEB SERVICES
24023 NE Shea Lane, Wood Village 97060
ben@akrosmarketing.com |
www.akrosmarketing.com
Ben Ivan(503) 799-3314

AL'S GARDEN CENTER

GARDEN & LANDSCAPING
7505 SE Hogan Road, Gresham 97080
jfaith@als-gardencenter.com |
www.als-gardencenter.com
Johnathan Faith.....(503) 491-0771

ALEX ASCUENA, CPA

ACCOUNTING & TAX SERVICES
33 NW 3rd Street, Gresham 97030-7201
alex@aacpa.tax | aacpa.tax
Alexandra Ascuena(503) 666-7100

ALL ABOUT ADVENTURE EXCURSIONS

SPORTS & RECREATION
Gresham
aaaexcursions@gmail.com |
www.aaaexcursions.com
Ed Chin(503) 781-6473

ALL ABOUT AUTOMOTIVE

AUTOMOTIVE
139 NW 2nd Street, Gresham 97030
karen@allaboutautomotive.com |
www.allaboutautomotive.com
Karen Johnston.....(503) 465-2926

ALLSTATE - FOX INSURANCE SERVICES

INSURANCE SERVICES
21721 SE Stark Street, Gresham 97030
justinfox@allstate.com |
www.allstate.com/justinfox
Justin Fox(503) 665-5125

ALSO - ADVOCATES FOR LIFE SKILLS AND OPPORTUNITY

EMPLOYMENT SERVICES
10541 SE Cherry Blossom Drive, Portland 97216
bturner@alsoweb.org | www.alsoweb.org
Brett Turner.....(503) 489-6565

WALTER EGO SALON

HAIR & BEAUTY
50 NW 2nd Street, Gresham 97030
mary.hoffmansalka@gmail.com |
www.alterego-salon.com
Mary Hoffman-Salka.....(503) 465-8801

AMANDA ELIZABETH KIMBER AGENCY

INSURANCE SERVICES
135 NW 1st St, Gresham 97030
amanda@insurancebyamanda.com |
www.insurancebyamanda.com
Amanda Kimber(503) 665-3111

AMAZON

DISTRIBUTING, MANUFACTURING & INDUSTRIAL
1250 NW Swigert Way, Troutdale 97060
pdx-communitypartners@amazon.com |
www.amazon.com/oregonhourlyjobs
PDX Workforce Staffing Team.....

AMBLESIDE MEALS ON WHEELS PEOPLE

CHILDREN & FAMILY NON-PROFIT
600 NE 8th St., Gresham 97030
brianna.winningham@mowp.org |
www.mowp.org
Brianna Winningham.....(503) 953-8201

AMERICAN FAMILY ESTATE PRESERVATION, INC. (AFEP)

FINANCIAL SERVICES
Gresham 97030
lavirni@mylivingtrust.org |
www.mylivingtrust.org
Lori Virnig.....(971) 409-1898

AMERICAN FAMILY INSURANCE BARCLAY & ASSOCIATES, INC.

INSURANCE SERVICES
1217 NE Burnside Road, Gresham 97030
pbarclay@amfam.com | www.tbarclay.com
Trish Barclay.....(503) 491-9441

AMERICAN MEDICAL RESPONSE NORTHWEST

HEALTHCARE - MEDICAL
One SE 2nd Avenue, Portland 97214
amr.multnomah.county@amr.net |
www.amr.net/home/portland
Shawn Hunt.....(503) 736-3428



All About
utomotive

**COMPLETE SERVICE & REPAIRS
ON FOREIGN &
DOMESTIC VEHICLES**

LET US BE YOUR
DEALERSHIP ALTERNATIVE

503.465.2926

allaboutautomotive.com
139 NW 2nd Street
Downtown Gresham

WE TREAT YOUR CAR AS IF IT WERE OUR OWN

AMERICAN RED CROSS

NON-PROFIT CIVIC
3131 N. Vancouver Ave., Portland 97227
stacey.stanford@redcross.org |
redcrossblood.org
Stacey Stanford(503) 528-5941

ANDERSON MARTIAL ARTS

SPORTS & RECREATION
301 NE Roberts Avenue, Gresham 97030
marieanderson0@hotmail.com |
www.danandersonkarate.com
Dan Anderson(503) 665-8596

ANNA AGATAT - MT HOOD REALTY

REAL ESTATE SERVICES
201 SE Dora Ave., Troutdale 97060
anna@mthoodrealty.com | annaagatat.com
Anna Agatat(323) 327-2790

APPLE OF HIS EYE CHARITY

CHILDREN & FAMILY NON-PROFIT
11 NE 10th Dr., Gresham 97030
tj@appleofhiseyecharity.org |
www.appleofhiseyecharity.org
T.J. Saling Caldwell(503) 665-6655

ARCADIA SENIOR LIVING

HEALTHCARE - MEDICAL
13031 SE Foster Rd., Portland 97236
crelations@arcadiaretirement.com |
www.arcadiaretirement.com
Mike Kretschmar(503) 206-8930

ARCPPOINT LABS OF PORTLAND EAST

HEALTHCARE - MEDICAL
2010 SE 182nd Ave., Portland 97233
Sandeep.Sagar@arcpointlabs.com |
www.arcpointlabs.com/portland-east
Sandeep Sagar(503) 334-0100

ARMWORKS HAND THERAPY

HEALTHCARE - MEDICAL
24076 SE Stark Street, Gresham 97030
ryanglover@armworks.net | www.armworks.net
Ryan Glover(503) 491-1666

ARROW SANITARY SERVICE

BUSINESS & PROFESSIONAL SERVICES
5455 NE 109th Ave, Portland 97220
cust2011@wasteconnections.com |
arrowsanitaryservice.com
Josh Brown(503) 257-1331

ASSISTING HANDS HOME CARE

SENIOR LIVING & SERVICES
8800 SE Sunnyside Road, Clackamas 97015
jrieder@assistinghands.com |
www.assistinghands.com/happyvalley
Janel Rieder(503) 928-8353

**Mobile Health Care**

24/7 On Site First Aid Response
State-certified EMT Assessment and Treatment
Transportation to and from clinic
Drug/Alcohol Testing: pre-employment, random, post-accident

503-231-6300*When you need us, Where you need us***Reduce Workers Comp Claims!**

Promoting the full
inclusion of people
experiencing
disabilities
in the life of
their community.

- Employment
- Children's Services
- Residential Homes
- Supported Living

Visit us at
alsoweb.org!



 **also**

advocates for life skills & opportunity

AT&T INC. - GRESHAM

COMMUNICATION
533 NW Division St., Gresham 97030
MK550A@ATT.COM | www.att.com
Michael Hope.....(541) 639-1639

AVAMERE AT CASCADIA VILLAGE

SENIOR LIVING & SERVICES
39495 Cascadia Village Dr, Sandy 97055
ccoffman@avamere.com |
www.avamere.com/avamere-at-cascadia-village
Cathi Coffman(503) 668-0300

AVAMERE AT CHESTNUT LANE

SENIOR LIVING & SERVICES
1219 NE 6th Street, Gresham 97030
mmccain@avamere.com |
avamereatchestnutlane.com
Melissa McCain(503) 674-0364

AVAMERE AT SANDY

SENIOR LIVING & SERVICES
17727 SE Langensand Road, Sandy 97055
sleining@avamere.com |
www.avamereatsandy.com
Susan Leining(503) 668-4199

AXIS DESIGN GROUP ARCHITECTURE & ENGINEERING, INC.

ARCHITECTS
11104 SE Stark St, Portland 97216
info@axisdesigngroup.com |
www.axisdesigngroup.com
Tim Brunner.....(503) 284-0988

BANK OF AMERICA

BANKING & CREDIT UNIONS
200 E Powell Blvd., Gresham 97030
pjohnson34@bofa.com | sbbankers.
bankofamerica.com/pjohnson34/overview
Penny Johnson.....(503) 665-3159

BANNER BANK - HOME LOANS

MORTGAGE AND LENDING SERVICES
9980 SE 82nd Ave., Happy Valley 97086
linda.mariani@bannerbank.com | bannerbank.
mymortgage-online.com/LoanOfficerLMariani.
html
Linda Mariani.....(503) 670-2202

BARLEY SPROUT RESTAURANT

RESTAURANTS, FOOD, & BARS
112 N Main Ave., Gresham 97030
barleysproutbrewery@gmail.com |
barleysprout.com
David Shonk.....(503) 665-7610

BBSI - PORTLAND

EMPLOYMENT SERVICES
2 Centerpointe Drive, Lake Oswego 97035
al.nodarse@bbsi.com | www.bbsi.com
Al Nodarse(503) 819-7540

BEDONT ORTHODONTICS

DENTAL, OPTICAL, HEARING
1042 NW Norman Avenue, Gresham 97030
info@bedontortho.com | www.bedontortho.com
Lori Hogan.....(503) 665-1115

BENCHMARK PHYSICAL THERAPY - GRESHAM

HEALTHCARE - ALTERNATIVE
283 NE 223rd Ave., Gresham 97030
acarlson@benchmarkpt.com |
www.benchmarkpt.com
Adrienne Carlson.....(503) 912-1192

BEST WESTERN SANDY INN

LODGING
37465 Highway 26, Sandy 97055
38155@hotel.bestwestern.com |
www.mthoodbestwestern.com
Bobbie Wilburn.....(503) 668-7100

BETTER BUSINESS BUREAU

NON-PROFIT CIVIC
jamie.dillon@thebbb.org |
www.bbb.org/northwest
Jamie Dillon(503) 833-2301

BETTY CHISUM

INDIVIDUAL & RETIRED
BettyChisum8@gmail.com
Betty Chisum(503) 661-5417

BIRCH COMMUNITY SERVICES, INC.

CHILDREN & FAMILY NON-PROFIT
17780 NE San Rafael, Portland 97230
info@bcsi.org | www.birchcommunityservices.org
Suzanne Birch.....(503) 251-5431

BLACK ROCK COFFEE BAR

COFFEE
24699 SE Stark Street, Troutdale 97060
eddy@br.coffee | br.coffee
Eddy Yunkherr.....(503) 381-0049

BLRB ARCHITECTS

ARCHITECTS
621 SW Morrison Street, Portland 97205
rhiggins@blrb.com | www.blrb.com
Richard Higgins(503) 595-0270

BLUE SECTOR MEDIA

PHOTOGRAPHY & VIDEOGRAPHY
Gresham 97030
jabourhousefilms@gmail.com |
jamestolliver.com
James Tolliver(971) 344-9380

BOCELLI'S RISTORANTE

RESTAURANTS, FOOD, & BARS
246 N Main Avenue, Gresham 97030
boccellis246@gmail.com | www.boccellis.net
Alix Bemis(503) 492-9534

BONAVENTURE OF GRESHAM

SENIOR LIVING & SERVICES
22514 SE Stark Street, Gresham 97030
executivedirectorgre@livebsl.com |
www.bonaventuresenior.com
Jen Ruljancich(503) 328-0010

BORING BREWING CO.

BREWERIES & WINERIES
38250 Pioneer Blvd., Sandy 97055
brewmaster@boringbrewing.com |
www.boringbrewing.com
Bill Schwartz(503) 427-8619

BREMIK CONSTRUCTION

COMMERCIAL BUILDING SERVICES
1026 SE Stark Street, Portland 97214
ctalbott@bremik.com | www.bremik.com
Corey Talbott.....(503) 688-1000

BRENDAN FLOHR W/MERRILL LYNCH WEALTH MANAGEMENT

FINANCIAL SERVICES
1211 SW 5th Ave, Portland 97204
brendan.flohr@ml.com | www.merrill.com/
merrill-lynch-wealth-management.html
Brendan Flohr(971) 258-7633

We put you right at home.

When you're ready to build, buy or update your home, our experts can help you achieve your dreams. We're here to guide you through the lending process and offer the right financing solution for your situation.

Home loans | Construction loans | Lot loans

Let's create tomorrow, together.
bannerbank.com



Member FDIC

**Linda Mariani, The Schiefer Group**

NMLS# 1492162
Residential Loan Officer

503-670-2202
linda.mariani@bannerbank.com



BROOKDALE MT. HOOD ASSISTED LIVING

SENIOR LIVING & SERVICES
25200 SE Stark Street, Gresham 97030
nboers@brookdale.com | Brookdale.com/en/communities/brookdale-mt-hood.html
Naomi Boers(503) 665-4300

BROOKDALE TROUTDALE MEMORY CARE

SENIOR LIVING & SERVICES
1201 SW Cherry Park Rd., Troutdale 97060
dross14@brookdale.com | brookdale.com/en/communities/brookdale-troutdale.html
Debby Ross(503) 465-8104

BUCKET LIST TRAVEL TOURS

TRAVEL SERVICES
sue@piazzapattick.com | www.bucketlisttraveltours.com
Sue Piazza(503) 926-4419

BURGERVILLE GRESHAM

RESTAURANTS, FOOD, & BARS
2975 NE Hogan Drive, Gresham 97030
bv-29@burgerville.com | www.burgerville.com
Keith Johnson(503) 665-0931

BURNS FEED STORE

RETAIL - SPECIALTY
29215 SE Orient Drive, Gresham 97080
shelleygiusto@gmail.com | www.burnsfeed.com
Shelley Burns-Giusto(503) 663-3246

BUSINESS & ACCOUNTING SOLUTIONS, LLC

ACCOUNTING & TAX SERVICES
2870 NE Hogan Drive, Gresham 97030
don@basdpdxpro.com | www.basdpdxpro.com
Don Lewis(503) 710-6213

BUSY BEE CATERING LLC

CATERING
68951 E Fairway Avenue, Welches 97067
busybeecatering@hotmail.com | www.busybeecatering.com
Jan Ostrom(503) 622-6743

C.P. TRIPS, INC.

TRAVEL SERVICES
12675 SE Hacienda Drive, Damascus 97089
cptrips@aol.com | www.cptripsinc.com
Cindy Passannante(503) 658-5646

CAFE DELIRIUM

COFFEE
308 N Main Avenue, Gresham 97030
cafedeliriumcc@yahoo.com | www.cafedelirium.com
Cody Clark(503) 666-2002

CANTEL SWEEPING

COMMERCIAL BUILDING SERVICES
1709 NW Eleven Mile Avenue, Gresham 97030
info@cantelsweeping.com | www.cantelsweeping.com
Michael Wagoner(503) 661-4337

CARBON TECHNOLOGY, INC.

COMMERCIAL BUILDING SERVICES
20142 SE Bornstedt Rd., Sandy 97055
carbontech@frontier.com | www.carbontechnologyinc.com
Bob Lindell(503) 668-8166

CARE SOLUTIONS

SENIOR LIVING & SERVICES
11124 NE Halsey Street, Portland 97220
brenda@caresolutionsnw.com | www.caresolutionsnw.com
Brenda Schuh(503) 548-7312

CAROLYN AEGERTER

INDIVIDUAL & RETIRED
theblingqueen15@gmail.com | Carolyn.Aegarter@gmail.com
Carolyn Aegarter(503) 753-2423

CASCADE ATHLETIC CLUB

FITNESS
19201 SE Division Street, Gresham 97030
greg@cascadeac.com | cascadeac.com
Greg Eisenzimmer(503) 665-4142

CCB INSURANCE SERVICES LLC

INSURANCE SERVICES
38975 Proctor Blvd., Sandy 97055
info@ccbinsuranceservices.com | www.ccbinsuranceservices.com
Jeremy Buck(503) 668-2524

CENTENNIAL SCHOOL DISTRICT

EDUCATION
18135 SE Brooklyn Street, Portland 97236
kassie.swenson@csd28j.org | www.csd28j.org
Kassie Swenson(503) 760-7990

CENTER FOR ADVANCED LEARNING

EDUCATION
1484 NW Civic Drive, Gresham 97030
director@calcharter.org | www.calcharter.org
Steve Day(503) 667-4978

CENTER FOR THE ARTS FOUNDATION

ARTS, CULTURE & ENTERTAINMENT
sue@kmorealestate.com | www.greshamcenterforthearts.org
Sue O'Halloran(503) 489-1157

CENTRAL ELECTRONIC ALARM, INC.

SECURITY & ALARMS
8435 SE Stark Street, Portland 97216
billg.cea@gmail.com | www.centralelectronicalarm.com
Bill Glasbrenner(503) 257-9696

CERTAPRO PAINTERS OF PORTLAND

COMMERCIAL BUILDING SERVICES
2410 SE 121st Avenue, Portland 97216
dhodge@certapro.com | certapro.com/portland
Dennis Hodge(503) 894-9379

CHASE

BANKING & CREDIT UNIONS
3090 NE Hogan, Gresham 97030
bernie.orgill@chase.com
Bernie Orgill(503) 618-1581

CHERRY PARK PLAZA, INDEPENDENT LIVING, ASSISTED AND MEMORY CARE

SENIOR LIVING & SERVICES
1323 SW Cherry Park Road, Troutdale 97060
crd@cherryparkplaza.com | www.cherryparkplaza.com
Bailey Lalum(503) 491-1661

CHRIS CAKES NORTHWEST, LLC

CATERING
sheldon@chriscakesnw.com | www.chriscakesnorthwest.com
Sheldon Penner(503) 374-1911

CHUCK THOMSEN, THOMSEN ORCHARDS, INC.

INDIVIDUAL & RETIRED
1595 Eastside Road, Hood River 97031
sen.chuckthomsen@state.or.us
Chuck Thomsen(541) 490-4641

CI LIFESTYLE MEALS, LLC

RESTAURANTS, FOOD, & BARS
14808 SE Powell Blvd., Portland 97236
chris@cilifestylemeals.com | cilifestylemeals.com
Chris Ideson(503) 869-3564

CINDY'S WINDOW FASHIONS

RETAIL - HOME
1700 NW Civic Drive, Gresham 97030
cindy@cindyswindowfashions.com | www.cindyswindowfashions.com
Cindy Norlen(503) 667-8898

CINE ESCAPES

ARTS, CULTURE & ENTERTAINMENT
204 NE 2nd Street, Gresham 97030
eric.m@cene-escapes.com | www.cine-escapes.com
Eric Mindiola(503) 902-2194

SEE WHAT FAIRVIEW CAN OFFER YOUR BUSINESS

Developement Incentive Program Include:

- Vertical Housing Zone
- Urban Renewal Incentives
- Opportunity Zone
- Enterprise Zone



Call Our Staff Today | 503.674.6206
www.fairvieworegon.gov
1300 NE Village Street, Fairview, Oregon

CITY OF FAIRVIEW - CITY HALL

CITY & REGIONAL GOVERNMENT
1300 NE Village Street, Fairview 97024
youngn@ci.fairview.or.us |
www.fairvieworegon.gov

Nolan Young.....(503) 665-7929

CITY OF GRESHAM - CITY HALL

CITY & REGIONAL GOVERNMENT
1333 NW Eastman Parkway, Gresham 97030
travis.stovall@greshamoregon.gov |
greshamoregon.gov

Travis Stovall.....(503) 618-3000

CITY OF GRESHAM POLICE DEPARTMENT

CITY & REGIONAL GOVERNMENT
1333 NW Eastman Parkway, Gresham 97030
gpd@greshamoregon.gov |
www.greshamoregon.gov

Travis Gulberg.....(503) 618-2318

CITY OF TROUTDALE - CITY HALL

CITY & REGIONAL GOVERNMENT
219 E Historic Columbia River Hwy, Troutdale 97060
randy.lauer@troutdaleoregon.gov |
www.troutdaleoregon.gov

Randy Lauer.....(503) 674-7224

CLACKAMAS COUNTY BANK - GRESHAM

BANKING & CREDIT UNIONS
1101 NE Burnside Street, Gresham 97030
byork@clackamascountybank.com |
www.clackamascountybank.com

Brian York.....(503) 665-9444

CLAWSON HEATING & AIR CONDITIONING INC.

HEATING & COOLING
143 NE Elliott Ave., Gresham 97030
clawsonheating@msn.com |
www.clawsonheating.com

Mike and Amy Clawson.....(503) 618-9646

CLEAR CREEK EVENTS

EVENT & WEDDING SERVICES
376 NE 219th Avenue, Gresham 97030
judith@methoodadulthoodcenter.com |
www.clearcreek-events.com

Judith O'Connell.....(971) 808-7201

CLEARLY AMAZING

HOME IMPROVEMENT BUILDING SERVICES
15717 SW 74th Ave, Tigard 97224
office@clearlyamazing.com |
www.clearlyamazing.com

Jennifer Ricca.....(503) 255-2532

CLUB PAESANO

EVENT FACILITIES
3800 W. Powell Loop, Gresham 97030
rchabs23@hotmail.com | clubpaesano.org

Rick Cervi.....(503) 577-8471

COASTAL FARM AND HOME SUPPLY

RETAIL - SPECIALTY
2865 NE Hogan Drive, Gresham 97030
devon.preble@coastalfarm.com |
www.coastalfarm.com

Devon Preble.....(503) 674-5337

COCHRAN PROPERTY GROUP, INC.

REAL ESTATE SERVICES
40 NW 2nd Street, Gresham 97030
Kris@Kriscochran.com |
www.cochranpropertygroup.com

Kris Cochran.....(503) 663-8343

**COLLEGE HUNKS
HAULING JUNK HAPPY VALLEY**

MOVING & STORAGE
402 Beaver Creek Rd., Oregon City 97045
scott.lane@chhj.com |
www.collegehunkshaulingjunk.com

Scott Lane.....(503) 386-0332

COLUMBIA BANK

BANKING & CREDIT UNIONS
473 NW Burnside Road, Gresham 97030
rdodgelittle@columbiabank.com |
www.columbiabank.com

Robyne Dodge-Little.....(503) 618-0939

COLUMBIA COLLECTION SERVICE

FINANCIAL SERVICES
10888 SE Main Street, Milwaukie 97222
cs@columbiacsi.com |
www.columbiacollection.com

Michelle Galvan.....(800) 807-3476

COLUMBIA CORRIDOR ASSOCIATION

NON-PROFIT CIVIC
6015 NE 80th Avenue, Portland 97218
corky@columbiacorridor.org |
www.columbiacorridor.org

Corky Collier.....(503) 287-8686

COLUMBIA GORGE OUTLETS

RETAIL - SPECIALTY
450 NW 257th Way, Troutdale 97060
bricks@woodmont.com |
shopcolumbiagorgeoutlets.com

Brent Ricks.....(503) 669-8060

CITY OF GRESHAM

OUR DRIVE TO THRIVE

Gresham's Economic Development team advocates for large and small industrial companies. We're the single point of contact and the expertise you need to be successful.

503-618-2640
GreshamOregon.gov/Economic-Development

The Small Business Center provides resources, guidance and step-by-step assistance for retail and commercial businesses. Need help getting started?

503-618-2872
SmallBusiness@GreshamOregon.gov

www.GreshamOregon.gov

C.P. Trips, Inc.

MAKING YOUR DREAM VACATIONS COME TRUE!

Cindy Passannante
*Your Local
Travel Professional*

Check out our website:
www.cptripsinc.com

503-658-5646
cptrips@aol.com



COLUMBIA GORGE TOURISM ALLIANCE

TRAVEL SERVICES
P O Box 1037, Stevenson 98648
www.visitcolumbiarivergorge.com
Casey Roeder.....(509) 427-8911

COLUMBIA SLOUGH WATERSHED COUNCIL

NON-PROFIT CIVIC
7040 NE 47th Ave, Portland 97218
executive.director@columbiaslough.org |
www.columbiaslough.org
Cathy Kellon..... 503-281-1132

COMCAST

COMMUNICATION
josh_pierce@comcast.com | www.comcast.com
Josh Pierce.....(971) 371-4323

COMFORT INN COLUMBIA GORGE GATEWAY

LODGING
1000 NW Graham Road, Troutdale 97060
gm@citroudale.com | www.citroudale.com
Donele Fowler.....(503) 492-2900

CONTRACT FURNISHINGS MART

CARPET & FLOORING
3108 NE 181st Avenue, Gresham 97230
tammy.allen@cfmfloors.com |
www.cfmfloors.com
Tammy Allen.....(503) 328-7260

COSTCO WHOLESALE - PORTLAND WAREHOUSE

RETAIL - GROCERY
4849 NE 138th Avenue, Portland 97230
w002mk02@costco.com | www.costco.com
Amanda Perry(503) 258-3741

COURTYARD BY MARRIOTT PORTLAND EAST

LODGING
2811 NE 181st Ave., Portland 97230
ethomas@innventures.com | www.marriott.com/hotels/travel/pdxce-courtyard-portland-east
Errol Thomas(503) 665-2811

COURTYARD FOUNTAINS

SENIOR LIVING & SERVICES
1545 SE 223rd Avenue, Gresham 97030
administrator@courtyardfountainsseniorkiving.com |
frontiermgmt.com/communities/courtyard-fountains
Brandon Williams.....(503) 667-4500

CRICKET WIRELESS AUTHORIZED RETAILER

TELECOMMUNICATIONS
1855 NE Division St., Gresham 97030
jayleane@ringringwireless.com |
www.cricketwireless.com
Jaylean Edmonds(503) 328-0311

CROWN CARPETS

CARPET & FLOORING
21655 SE Stark Street, Gresham 97030
pkey@crowncarpets.com |
www.crowncarpets.com
Paul Key(503) 665-4162

DAY WIRELESS SYSTEMS

TELECOMMUNICATIONS
4700 SE International Way, Milwaukie 97222
ctate@daywireless.com | www.daywireless.com
Chris Tate(503) 228-9292

DENTON PLASTICS

DISTRIBUTING, MANUFACTURING & INDUSTRIAL
18811 NE San Rafael, Portland 97230
tgalin@denplas.com | www.dentonplastics.com
Teresa Galin(503) 257-9945

DISCOUNTS PLUS

RETAIL - GROCERY
211 NE Roberts Ave, Gresham 97030
mike@nwsalvage.com | www.discountsplus.com
Mike Kelly.....(503) 489-5724

DOGWOOD PET HOSPITAL

ANIMAL SERVICES
1440 E Powell Blvd., Gresham 97030
catman@dogwoodpet.vet |
www.dogwoodveterinarian.gresham.com
David Hawkins.....(503) 667-9457

DOWNING & CORZATT, LLC

ACCOUNTING & TAX SERVICES
5933 NE Win Silvers Drive, Portland 97220
tim@dc-pdxcpa.com | www.dc-pdxcpa.com
Tim Downing.....(503) 257-9611

DR. MARLENA KENNEDY, ND

HEALTHCARE - ALTERNATIVE
500 NW 20th St. Suite 101, Gresham 97030
drkennedynd@gmail.com |
www.kennedynaturalmedicine.com
Dr. Marlena Kennedy(503) 489-5917

DRAKE'S 7 DEE'S NURSERY & LANDSCAPING

GARDEN & LANDSCAPING
5645 SW Scholls Ferry Road, Portland 97225
drake@drakes7dees.com |
www.drakes7dees.com
Drake Snodgrass.....(503) 256-2223

DSV AIR & SEA INC.

BUSINESS & PROFESSIONAL SERVICES
9830 NE Cascade PKWY, Suite 275, Portland 97220
melissa.wiley@us.dsv.com | dsv.com
Melissa Wiley.....(971) 347-1561

DUTCH BROS COFFEE

COFFEE
328 NW Burnside Rd., Gresham 97030
austin.smith@dutchbros.com |
www.dutchbros.com
Austin Smith(541) 955-4700

EAST HILL CHURCH

CHURCHES
701 N Main Avenue, Gresham 97030
cocoj@easthill.org | www.easthill.org
Coco Jenkins(503) 661-4444

EAST METRO ASSOCIATION OF REALTORS

REAL ESTATE SERVICES
501 NE Hood Avenue, Gresham 97030
ae@emaregon.com | www.emaregon.com
Michael Schultze(503) 667-1211

EAST METRO ECONOMIC ALLIANCE

BUSINESS & PROFESSIONAL SERVICES
P O Box 422, Gresham 97030
jarvezhall@gmail.com |
www.eastmetro-alliance.org
Jarvez Hall.....(503) 849-2318

EASTCO DIVERSIFIED SERVICES

CHILDREN & FAMILY NON-PROFIT
215 SW Wallula Avenue, Gresham 97080
eastco@eastcods.org | www.eastcods.org
Christina Foster(503) 667-0613

EASTSIDE DENTAL CLINIC

DENTAL, OPTICAL, HEARING
1540 SW 257th Drive, Troutdale 97060
smiles@east-sidedentalclinic.com |
www.east-sidedentalclinic.com
Adie Melchior.....(503) 665-2177

EASTSIDE THEATER CO.

ARTS, CULTURE & ENTERTAINMENT
3445 SE Hillyard Rd., Gresham 97080
info@eastside-theater.com |
www.eastside-theater.com
Brandy Nix.....(971) 231-5032

EASTSIDE TIMBERS

SPORTS & RECREATION
510 NE Roberts Avenue, Gresham 97030
info@eastside-timbers.com |
www.eastside-timbers.com
Carly Copplestone(503) 667-8312

EDWARD JONES - ALINA ROCHA JOHNSON

FINANCIAL SERVICES
701 NE Division St., Gresham 97030
alina.rochajohnson@edwardjones.com |
www.edwardjones.com/alina-rochajohnson
Alina Rocha Johnson(503) 328-8688



eastside dental

John H. Kilian, DMD
Jordan D. Anderson, DDS

- Cosmetic & Family Dentistry
- Comprehensive Restorative Services
- Periodontal/Gum Health
- Implant Restorations
- Smile Whitening: Zoom & Opalescence-Go
- topDentist™ Office
- New Patients Welcome

1540 SW 257th Drive, Troutdale, OR • (503) 665-2177
east-sidedentalclinic.com

EDWARD JONES/CHRISTINA J. PRICE

FINANCIAL SERVICES

The Crossings at Gresham Station, Gresham 97030

christina.price@edwardjones.com |www.edwardjones.com

Christina Price(503) 665-2193

EDWARD JONES/JARED TJADEN, FINANCIAL ADVISOR

FINANCIAL SERVICES

38750 Proctor Blvd., Sandy 97055

jared.tjaden@edwardjones.com |www.edwardjones.com/jared-tjaden

Jared Tjaden(503) 668-1070

EDWARD JONES/KIMBERLEY LANPHAR

FINANCIAL SERVICES

The Crossings at Gresham Station, Gresham 97030

kimberley.lanphar@edwardjones.com |www.edwardjones.com

Kimberley Lanphar.....(503) 665-2193

EL PROGRAMA HISPANO CATOLICO

CHILDREN & FAMILY NON-PROFIT

333 SE 223rd Ave., Gresham 97030

communications@elprograma.org |www.elprograma.org

Susan Abernethy.....(503) 669-8350

ELEMENTS HEALTH CLUB - GRESHAM

FITNESS

2456 E Powell Blvd, Gresham 97030

elements.gresham@pnwcv.com |elementshealthclubs.com

Tyler Carey.....(503) 328-9777

EREP, INC.

PROFESSIONAL DEVELOPMENT

501 NE Main St, Gresham 97030

admin@erep.com | www.erep.com

Travis Stovall.....(503) 479-8372

EXCEED ENTERPRISES INC

EMPLOYMENT SERVICES

5285 SE Mallard Way, Milwaukie 97222

stephena@exceedpdx.com |www.exceedpdx.com

Stephen Achilles(503) 652-9036

EXPRESS EMPLOYMENT PROFESSIONALS

EMPLOYMENT SERVICES

120 NW Burnside, Gresham 97030

lisa.monfils@expresspros.com |www.expresspros.com/gresham

Lisa Monfils.....(503) 492-3200

FAMILY OF FRIENDS MENTORING

CHILDREN NON-PROFIT

1333 NW Eastman Parkway, Gresham 97030

mkosta@family-of-friends.org |www.family-of-friends.org

Michelle Kosta(503) 618-2397

FARMINGTON SQUARE GRESHAM

SENIOR LIVING & SERVICES

1655 NE 18th St, Gresham 97030

info-gresham@farmingtonsquare.com |www.farmingtonsquare-gresham.com

Malina Souliyalavong.....(503) 405-7688

FEATHER YOUR NEST QUILT SHOP

RETAIL - SPECIALTY

130 N Main Avenue, Gresham 97030

feathered.nest97030@gmail.com |www.featheryournestquiltstore.com

Kris Howatt(971) 220-0936

FEDEX GROUND

DISTRIBUTING, MANUFACTURING & INDUSTRIAL

2460 NW Sundial Road, Troutdale 97060

1127375@fedex.com | www.fedex.com

Shane Spannaus800-GoFedEx

FINANCE OF AMERICA MORTGAGE - CLACKAMAS BRANCH

FINANCIAL SERVICES

12550 SE 93rd Avenue, Clackamas 97015

tstinson@financeofamerica.com |www.foamortgage.com/tstinson

Timothy Stinson.....(503) 496-5702

FIREHOUSE SUBS

RESTAURANTS, FOOD, & BARS

2442 SE Burnside Road, Gresham 97080

greshamvillageor@firehousesubs.com |www.firehousesubs.com

Jenny Pettit(503) 491-3585

FIRESIDE MEDIA

PHOTOGRAPHY & VIDEOGRAPHY

andrew@fireside.media | www.fireside.media

Andrew Cox.....(503) 943-0527

FIRST AMERICAN TITLE

REAL ESTATE SERVICES

1205 NE Division Street, Gresham 97030

gbell@firstam.com | www.firstam.com

Gaye Bell(503) 784-7497

FIRST STUDENT, INC.

TRANSPORTATION

1625 SE Hogan Road, Gresham 97080

tammy.rickman@firstgroup.com |www.firststudentinc.com

Tammy Rickman(503) 665-8193

FIX AUTO GRESHAM

AUTOMOTIVE

935 SE 202nd, Portland 97233

skim@fixauto.com | www.fixauto.com/gresham

Shon Kim.....(503) 665-8191

FOOD FOR FAMILIES, INC.

CHILDREN & FAMILY NON-PROFIT

3505 SE 182nd Ave, Gresham 97030

pdxfood4fams@gmail.com | food4families.net

Ellie Graham(971) 220-6679

FORTIS CONSTRUCTION, INC.

COMMERCIAL BUILDING SERVICES

1705 SW Taylor Street, Portland 97205

jeff.nakashima@fortisconstruction.com |www.fortisconstruction.com

Jeff Nakashima(503) 459-4477

FRED WALLACE

INDIVIDUAL & RETIRED

cougar_17047@msn.com

Fred Wallace(503) 208-1834

FRENZI FROZEN YOGURT

RESTAURANTS, FOOD, & BARS

234 N Main Avenue, Gresham 97030

theresa@frenzifrozenyogurt.com |www.frenzifrozenyogurt.com

Theresa Fery(503) 912-1577

FRIENDS OF THE CHILDREN - PORTLAND

CHILDREN & FAMILY NON-PROFIT

424 NE 172nd Avenue, Portland 97230

TRossi@friendspdx.org | www.friendspdx.org

Traci Rossi.....(503) 281-6633

GATEWAY GRESHAM ELKS LODGE #1805

NON-PROFIT CIVIC

3330 NE Division Street, Gresham 97030

1805elksbanquet@gmail.com | www.elks.org/lodges/ContactUs.cfm?LodgeNumber=1805

Becky Burlingham(623) 693-2851

GHIONI TAX AND ACCOUNTING SOLUTIONS, LLC

ACCOUNTING & TAX SERVICES

958 NE Kelly St., Gresham 97030

michaela@ghionitax.com | ghionitax.com

Michaela Gustafson-Ghioni.....(503) 465-3720

GLENDOVEER GOLF & TENNIS

SPORTS & RECREATION

14015 NE Glisan, Portland 97230

kniesner@playglendoveer.com |www.playglendoveer.com

Kevin Niessner.....(503) 253-7507

Neck & Back Pain Relief**DR. ROBERT W. RAMSEY, DOCTOR OF CHIROPRACTIC****Short Term Care For Your Neck & Back Pain**Auto Accident Cases • Accepts M.D. Referrals • Sports Injuries
Weight Loss • Massage Therapy • Physiotherapy • K-Laser

Affordable/Insurance accepted

Over 24 Years of
Experience**GRESHAM FAMILY CHIROPRACTIC****503-667-6744**575 NE 2nd Street, Gresham • www.greshamchiropractor.com

GOLDEN EAGLE HARDSCAPES LLC

GARDEN & LANDSCAPING
Gresham 97030

goldeneaglehardscapes@gmail.com |
www.goldeneaglehardscapes.com

Emmanuel Dominguez.....(503) 975-7083

**GOLDEN TICKET ADVENTURES -
SPECIALIZING IN EVERYTHING DISNEY**

TRAVEL SERVICES
Gresham 97080

erin@golden-ticketadventures.com |
www.golden-ticketadventures.com

Erin Beggs.....

GOOD NEWS COMMUNITY HEALTH CENTER

HEALTHCARE - MEDICAL

18000 SE Stark Street, Portland 97233

bob.sayson@gmail.com | www.goodnewschc.org

Robert Sayson.....(503) 489-0567

**GOOD SAMARITAN SOCIETY - FAIRLAWN
VILLAGE SENIOR LIVING AND SKILLED
NURSING CARE**

SENIOR LIVING & SERVICES

3457 NE Division Street, Gresham 97030

david.duvall@good-sam.com |

www.good-sam.com

David Duvall.....(503) 667-1965

GREAT SOLUTIONS, INC.

ACCOUNTING & TAX SERVICES

500 SE Butler Road, Gresham 97080

carmen@gsiaccounting.com |

www.gsiaccounting.com

Carmen Dumitrescu.....(503) 807-6857

GREATER PORTLAND INC.

BUSINESS & PROFESSIONAL SERVICES

111 SW Columbia Street, Portland 97201

monique.claiborne@greaterportlandinc.com |

www.greaterportlandinc.com

Monique Claiborne.....(503) 445-8065

GRESHAM ANIMAL HOSPITAL

ANIMAL SERVICES

520 NW Division, Gresham 97030

dogdoc4u@juno.com |

www.greshamanimalhospital.com

Chris Holenstein, DVM.....(503) 666-1600

GRESHAM AREA CHAMBER OF COMMERCE

CHAMBER OF COMMERCE

1005 N Main Avenue, Gresham 97030

gacc@greshamchamber.org |

www.greshamchamber.org

Lynn Snodgrass.....(503) 665-1131

GRESHAM BICYCLE CENTER

SPORTS & RECREATION

567 NE 8th Street, Gresham 97030

gbc@wa-net.com | www.greshambike.com

Lacie Wolf.....(503) 661-2453

GRESHAM BISCUITS CAFE

RESTAURANTS, FOOD, & BARS

1905 NE Division, Gresham 97030

davidligatich@yahoo.com |

www.facebook.com/greshambiscuitscafe

David Ligatich.....(503) 328-8838

GRESHAM BREAKFAST LIONS CLUB

NON-PROFIT CIVIC

P O Box 1613, Gresham 97030

tomslyter@yahoo.com |

www.e-clubhouse.org/sites/greshambreakfast

Tom Slyter.....(503) 358-1313

GRESHAM BURRITO SHOP

RESTAURANTS, FOOD, & BARS

325 N Main Ave., Gresham 97030

patricia.patricia.lopez.088@gmail.com |

www.greshamburrito.com

Patricia Gutierrez.....(503) 912-3781

GRESHAM FAMIL & BANKRUPTCY LAW

LEGAL SERVICES

lillian@watsonlawgresham |

www.greshamfamilylaw.com

Lillian Suelzle Watson.....(503) 492-4229

GRESHAM FAMILY CHIROPRACTIC

HEALTHCARE - ALTERNATIVE

575 NE 2nd Street, Gresham 97030

info@greshamchiropractor.net |

www.greshamchiropractor.com

Robert Ramsey, DC.....(503) 667-6744

GRESHAM FORD

AUTOMOTIVE

1999 E Powell Blvd., Gresham 97080

bess@greshamford.com |

www.greshamford.com

Bess Wills.....(503) 665-0101

Play
GOLF TENNIS FOOTGOLF

- 36 Holes of Golf
- 4 Indoor Tennis Courts
- 18 Hole Foot Golf Course
- Golf Carts Charged by the Sun
- Covered, Heated Driving Range
- Golf Boards

14015 NE Glisan Street Portland, OR 97230
Located less than 15 minutes from Downtown
503.253.7507 | www.PlayGlendoveer.com
Lessons & Range: 503.252.0384

Metro Facebook Twitter YouTube RSS

GRESHAM GLASS, INC.

HOME IMPROVEMENT BUILDING SERVICES
250 NE Hogan Drive, Gresham 97030
kaylie@greshamglass.com |
www.greshamglass.com
Mike Malsom.....(503) 667-8282

GRESHAM HABITAT FOR HUMANITY RESTORE

NON-PROFIT CIVIC
610 NE 181st Avenue, Portland 97230
jdrushal@pdxrestore.org | www.pdxrestore.org
Joseph Drushal.....(503) 575-7336

GRESHAM HISTORICAL SOCIETY & MUSEUM

NON-PROFIT CIVIC
410 N Main Avenue, Gresham 97030
director@greshamhistorical.org |
www.greshamhistorical.org
Mark Moore.....(503) 661-0347

GRESHAM INJURY LAW CENTER

LEGAL SERVICES
424 NE Kelly Avenue, Gresham 97030
tom@greshaminjurylaw.com |
www.greshaminjurylaw.com
Tom Melville.....(503) 492-1100

GRESHAM LIQUOR STORE

RETAIL - GROCERY
2414 SE Burnside Road, Gresham 97080
mark@greshamliquor.com |
www.greshamliquor.com
Mark Klahn.....(503) 665-9327

GRESHAM LOCKSMITH INC.

LOCKSMITHS
21755 SE Stark Street, Gresham 97030
info@greshamlocksmith.com |
www.greshamlocksmith.com
Arec Larsen.....(503) 666-4138

GRESHAM MEMORIAL CHAPEL & EVENING EVENTS

FUNERAL SERVICES
257 SE Roberts, Gresham 97080
jcg-gfc@frontier.com | www.greshamfuneral.com
John Gerbish.....(503) 618-8176

GRESHAM MODERN DENTISTRY

DENTAL, OPTICAL, HEARING
387 NE 223rd Avenue, Gresham 97030
onealea@pacden.com |
www.greshammoderndentistry.com
Aimee O'Neale.....(503) 491-5450

GRESHAM OUTDOOR PUBLIC ART (GOPA)

ARTS, CULTURE & ENTERTAINMENT
judyahan@comcast.net |
www.greshamoutdoorpublicart.com
Judy Han.....(503) 310-8565

GRESHAM SANITARY SERVICE INC.

PUBLIC UTILITIES
2131 NW Birdsdale, Gresham 97030
matt@greshamsanitary.com |
www.greshamsanitary.com
Matt Miller.....(503) 665-2424

GRESHAM SENIOR CENTER

SENIOR LIVING & SERVICES
600 NE 8th St., Gresham 97030
greshamseniorcenter@frontier.com |
www.greshamseniorcenter.org
Terry Pullen.....(503) 988-4870

GRESHAM STATION

RETAIL - SPECIALTY
649 NW 12th Street, Gresham 97030
scotta@harsch.com | www.greshamstation.com
Scott Anderson.....(503) 450-0806

GRESHAM SUBARU

AUTOMOTIVE
1925 E Powell, Gresham 97030
nicksmitgm@aol.com | www.bigsubarustore.com
Nick Smit.....(503) 661-1200

GRESHAM TOASTMASTERS

NON-PROFIT CIVIC
Gresham 97030
toastmastersofgresham@gmail.com |
783.toastmastersclubs.org
Wendy Patton.....(503) 489-9265

GRESHAM TOYOTA SCION

AUTOMOTIVE
950 NE Hogan Drive, Gresham 97030
billj@greshamtoyota.com |
www.greshamtoyota.com
Bill James.....(503) 667-1135



GRESHAM-BARLOW SCHOOL DISTRICT:

Inspire and Empower Each Student

- Strong core curriculum in reading, mathematics, and science
- High academic standards and expectations for student success
- Technology used as a learning tool
- Well-rounded programs with opportunities in arts, athletics, and activities



www.gresham.k12.or.us
 503-261-4550
 1331 NW Eastman Parkway
 Gresham, OR 97030

Photo by Katharine Kimball

**GRESHAM-BARLOW
EDUCATION FOUNDATION**

CHILDREN NON-PROFIT
P O Box 3406, Gresham 97030
Tbell@beginright.com | www.gbefkids.org
Tyson Bell(503) 766-0008

GRESHAM-BARLOW SCHOOL DISTRICT

EDUCATION
1331 NW Eastman Parkway, Gresham 97030
ely@gresham.k12.or.us |
www.gresham.k12.or.us
Jordan Ely(503) 261-4550

**GRESHAM-BARLOW
YOUTH BASEBALL/SOFTBALL**

SPORTS & RECREATION
219 S Main Avenue, Gresham 97030
president@gbybs.org | www.gbybs.org
Kayla Viramontes.....

GUIDE DOGS FOR THE BLIND

NON-PROFIT CIVIC
32901 SE Kelso Road, Boring 97009
sarmstrong@guidedogs.com |
www.guidedogs.com
Susan Armstrong(503) 668-2100

H2OREGON PREMIUM WATER COMPANY

OFFICE SUPPLIES & SERVICES
13487 SE Johnson Rd., Portland 97222
tim@h2oregonwater.com |
www.h2oregonwater.com
Tim Dougherty(503) 799-6691

HAMPTON INN

LODGING
3039 NE 181st Avenue, Portland 97230
pdxorhx_hampton@hilton.com |
www.portlandgresham.hamptoninn.com
Donele Fowler(503) 669-7000

HEALING TREASURES MASSAGE LLC

HEALTHCARE - ALTERNATIVE
1217 NE Burnside, Gresham 97030
JulieHaugenLMT@gmail.com |
HealingTreasuresMassageTherapy.com
Julie Haugen(503) 320-1650

HEALTHBENEFITS411

INSURANCE SERVICES
lparker@healthbenefits411.com |
www.healthbenefits411.com
Leslie Parker(503) 891-5793

HEART OF HOSPICE - GRESHAM

HEALTHCARE - MEDICAL
1042 NW Norman Ave., Gresham 97030
leigh.stratton@inspiringhospice.com |
inspiringhospice.com
Leigh Stratton(503) 925-3029

HEIDI'S OF GRESHAM

RESTAURANTS, FOOD, & BARS
1230 NE Cleveland Avenue, Gresham 97030
heidis1980@hotmail.com |
www.heidisofgresham.com
Linda Hinshaw(503) 667-4200

HIRE NW

EMPLOYMENT SERVICES
248 NE 219th Ave, Gresham 97030
Garon@hirenw.com | hirenw.com
Garon Primmer(971) 401-1051

HISPANIC METROPOLITAN CHAMBER

CHAMBER OF COMMERCE
333 SW 5th Avenue, Portland 97204
dnunez@hmccoregon.com |
www.hmccoregon.com
Diana Nunez(503) 222-0280

**HISTORIC DOWNTOWN
GRESHAM BUSINESS ASSOC.**

NON-PROFIT CIVIC
exploregresham@gmail.com |
historicdowntowngresham.org
Kayla Brown.....

**HOME BUILDERS ASSOCIATION OF
METROPOLITAN PORTLAND**

HOME IMPROVEMENT BUILDING SERVICES
15555 Bangy Rd., Lake Oswego 97035
Roseannj@hbapdx.org | www.hbapdx.org
Roseann Johnson(503) 684-1880

HOME FORWARD

CITY & REGIONAL GOVERNMENT
135 SW Ash Street, Portland 97204
michael.buonocore@homeforward.org |
www.homeforward.org
Michael Buonocore(503) 802-8423

HOMEMASTERS PORTLAND EAST

HOME IMPROVEMENT BUILDING SERVICES
P O Box 879, Boring
97009
steve@portlandeast.homemasters.com |
portlandeast.homemasters.com
Steve Frick(503) 328-9400

HONEST-1 AUTO CARE

AUTOMOTIVE
1690 NE Division Street, Gresham 97030
honest1gresham@gmail.com |
www.honest1gresham.com
Marty Thogerson(503) 465-2725



Gresham Ford
The Dealer with A Heart!
1999 E Powell Blvd. Gresham
(503) 665-0101
GreshamFord.com


**TRY LOCAL
LOVE LOCAL
SHOP LOCAL**



All Makes | All Models

Tire & Auto Center
No Appointment Needed



GRESHAM SANITARY SERVICE



*Serving Gresham
since 1948*

- Commercial & residential garbage collection
- Drop box service
- Recycling
- Medical waste collection

P.O. Box 1560, 2131 N.W. Birdsedale, Gresham, OR 97030
503-665-2424

HONKE HEATING & AIR CONDITIONING INC.

HEATING & COOLING
840 NE Cleveland Avenue, Gresham 97030
tj@honkeheating.com | www.honkeheating.com
T.J. Lenchitsky(503) 666-3725

HOOD VIEW CHIROPRACTIC

HEALTHCARE - ALTERNATIVE
1550 NW Eastman Parkway, Gresham 97030
amyhansondc@gmail.com |
www.hoodviewchiro.com
Amy Hanson, DC.....(503) 669-1966

HOODVIEW NEWS

NEWSPAPERS & PUBLICATIONS
P O Box 174, Sandy 97055
info@hoodviewnews.com |
www.hoodviewnews.com
Michael Wiley(503) 475-4905

HOPE'S BAKE SHOP

BAKERY
455 NE Burnside Road, Gresham 97030
hopesbakeshop@gmail.com |
www.hopesbakeshop.com
Hope Duran.....(503) 936-7324

HULL FOUNDATION AND LEARNING CENTER, INC.

NON-PROFIT CIVIC
43233 SE Oral Hull Road, Sandy 97055
kerith@hullflc.org | oralhull.org
Kerith Vance.....(503) 668-6195

HUMAN SOLUTIONS

CHILDREN & FAMILY NON-PROFIT
10550 NE Halsey St., Portland 97220
amiller@humansolutions.org |
www.humansolutions.org
Andy Miller(503) 548-0200

ICANDY

RESTAURANTS, FOOD, & BARS
344 N Main Avenue, Gresham 97030
greshamicandy@gmail.com |
www.facebook.com/icandygresham
Janelle Mikula.....(503) 912-3263

INSPIRE LIFE CHIROPRACTIC

HEALTHCARE - ALTERNATIVE
13035 SE 84th Ave., Clackamas 97015
info@inspirelifepdx.com | inspirelifepdx.com
McCartney Goff, DC.....(971) 351-0808

INSURANCE SOLUTIONS NW, INC.

INSURANCE SERVICES
karen@insurancesolutionsnw.com |
www.insurancesolutionsnw.com
Karen Kane.....(503) 789-7217

IPARTS AND PHONE REPAIRS

COMPUTER SERVICES, INFORMATION TECHNOLOGY
1925 NE Division Street, Gresham 97030
gresham@ipartsrepair.com |
www.ipartsrepair.com
Kyle Anderson.....(503) 908-2727

JACOBS ENGINEERING GROUP, INC.

ENVIRONMENTAL SERVICES
20015 NE Sandy Blvd., Portland 97230
Kristen.Jackson@jacobs.com | www.Jacobs.com
Kristen Jackson(503) 618-3450

JL INDUSTRIES INC.

PLUMBING
802 SE 199th Ave., Portland 97233
walti@pppinc.net | www.pppinc.net
Walt Insler(503) 256-4010

JOAN ALBERTSON

INDIVIDUAL & RETIRED
albertsonjoan@gmail.com
Joan Albertson.....(503) 666-5723

JOHNSON CHIROPRACTIC CLINIC

HEALTHCARE - ALTERNATIVE
417 E. Powell Blvd., Gresham 97030
docgaryj@aol.com |
www.drjohnsonchiroclinic.com
Gary Johnson(503) 665-2517

JOHNSON CREEK WATERSHED COUNCIL

NON-PROFIT CIVIC
4033 SE Woodstock Blvd, Portland 97202
info@jcw.org | www.jcw.org
Daniel Newberry.....(503) 652-7477

JOY POKE

RESTAURANTS, FOOD, & BARS
1032 NW Civic Dr., Gresham 97030
justin@joyteriyaki.com | www.joypokebar.com
Justin Hwang.....(213) 447-1859

JR FURNITURE

RETAIL - HOME
40 NW Burnside, Gresham 97030
ed@jrfurniture.com | www.jrfurniture.com
Ed Lange(503) 491-8898

JUNKI'S RIVERVIEW RESTAURANT

RESTAURANTS, FOOD, & BARS
29311 SE Stark Street, Troutdale 97060
riverviewevents@yoshida.com |
www.riverviewportland.com
Takashi Higuchi(503) 661-3663

KAISER PERMANENTE

HEALTHCARE - MEDICAL
19500 SE Stark Street, Portland 97233
ruth.j.adkins@kp.org | www.kp.org
Ruth Adkins(503) 813-2000

KELLER WILLIAMS REALTY PORTLAND ELITE

REAL ESTATE SERVICES
12701 SE 97th Ave, Clackamas 97015
bevblume@kw.com |
www.kellerwilliamsrealtyportlandelite.com
Bev Blume.....(503) 482-8005

KELLEY CONNECT PORTLAND

COMPUTER SERVICES, INFORMATION TECHNOLOGY
7204 SW Durham Road, Tigard 97224
bruce.campbell@kelleyconnect.com |
kelleyconnect.com
Bruce Campbell.....(503) 643-6048

KENWAY BENEFITS GROUP

INSURANCE SERVICES
2870 NE Hogan Drive, Gresham 97030
kenwaybenefitsgroup@gmail.com |
www.kenwaybenefitsgroup.com
Geoffrey Kenway(503) 349-3599

KERR PROPERTIES, INC.

PROPERTY MANAGEMENT
18024 SE Pine St., Portland 97233
sean@kerrpropertiesinc.com |
www.kerrpropertiesinc.com
W. Sean Kerr, MPM RMP.....(503) 666-0922

KEYBANK - GRESHAM

BANKING & CREDIT UNIONS
390 W Burnside Rd, Gresham 97030
tyler_howard@keybank.com | www.key.com
Tyler Howard(503) 405-4325

KG SPECIALTIES

ADVERTISING - PROMOTIONAL PRODUCTS
12570 NE Marx Street, Portland 97230
anne.wand@kgspecialties.com |
www.kgspecialties.com
Anne Wand.....(503) 669-8233

KOHLER MEYERS O'HALLORAN INC

REAL ESTATE SERVICES
333 N. Main Ave., Gresham 97030
sue@kmorealestate.com |
www.kmorealestate.com
Sue O'Halloran.....(503) 661-8000

KONA ICE OF NORTH CLACKAMAS

RESTAURANTS, FOOD, & BARS
pompetti@kona-ice.com | www.kona-ice.com
Alisa Pompetti(503) 367-5973



HONKE HEATING & AIR CONDITIONING

"Comfort You Can Trust"

Serving the greater Portland area and its surrounding communities, including up to Government Camp and the mid-Columbia Gorge.

24 HR. SERVICE • (503) 666-3725

www.honkeheating.com



CCB# 71762

LA CARRETA OF GRESHAM

RESTAURANTS, FOOD, & BARS
660 E Burnside, Gresham 97030
fiestarest@aol.com |
www.lacarretaofgresham.com
Jose Estrada.....(503) 661-7647

LANDMARK TAX & INVESTMENT SERVICES INC.

ACCOUNTING & TAX SERVICES
415 NE 4th Street, Gresham 97030
info@landmarktaxandinvestment.com |
www.landmarktaxandinvestment.com
Christy Kinsey(503) 491-1000

LEATHERS FUELS

GASOLINE & PROPANE
255 Depot Street, Fairview 97024
leathers@teleport.com
Lila Leathers-Fitz(503) 661-1244

LEGACY MOUNT HOOD MEDICAL CENTER

HEALTHCARE - MEDICAL
24800 SE Stark Street, Gresham 97030
tshanks@lhc.org | www.legacyhealth.org
Tanya Shanks-Connors(503) 674-1122

LEGALSHIELD - MICHAEL OLEARY

LEGAL SERVICES
micholeary13@gmail.com |
www.olearym.legalshieldassociate.com
Michael OLeary.....(503) 998-5868

LENNY MARTIN PAINTING LLC

HOME IMPROVEMENT BUILDING SERVICES
lennymartin46@gmail.com |
lennymartinpainting.com
Lenny Martin.....(503) 888-8020

LES SCHWAB TIRE CENTERS

AUTOMOTIVE
390 NE Burnside, Gresham 97030
kelly.k.murphy@lesschwab.com |
www.lesschwab.com
Kelly Murphy(503) 666-9496

LESLEE DIRK - ERA FREEMAN & ASSOCIATES

REAL ESTATE SERVICES
1685 E Powell Blvd., Gresham 97030
lesleedirk@eraglobal.com
Leslee Dirk(503) 318-0927

LEWIS & CLARK MONTESSORI CHARTER SCHOOL

EDUCATION
15600 SE 232nd Drive, Damascus 97089
info@lcmcs.org | www.lcmcs.org
Peter Jensen(503) 427-0803

LEWIS CREATIVE

ADVERTISING - MARKETING & WEB SERVICES
Gresham 97030
haley@lewiscreative.net | www.lewiscreative.net
Haley Lewis(503) 912-0841

LINEAGE LOGISTICS

DISTRIBUTING, MANUFACTURING & INDUSTRIAL
19450 NE San Rafael Street, Portland 97230
khenningesen@linealogistics.com |
www.linealogistics.com
Kayla Henningsen(503) 489-2995

LORI STAHLMAN

INDIVIDUAL & RETIRED
loristahlman54@gmail.com
Lori Stahlman(503) 484-8385

LORI STEGMANN INSURANCE AGENCY, INC - FARMERS INSURANCE GROUP

INSURANCE SERVICES
202 SE 181st Avenue, Portland 97233
john.lstegmann@farmersagency.com |
www.farmersagency.com/lstegmann
John Sage.....(503) 667-7971

MARGARITA FACTORY - GRESHAM

RESTAURANTS, FOOD, & BARS
77 NE 4th Street, Gresham 97030
mojavegresham.events@gmail.com |
www.margaritafactory.com/locations-and-hours/gresham
John Paul Cantu(503) 669-0569

MARIE'S CUSTOM QUILTING

RETAIL - SPECIALTY
59 NE 3rd Street, Gresham 97030
marieanderson0@hotmail.com |
www.mariescustomquilting.com
Marie Anderson(503) 481-5117

MARK NGUYEN - STATE FARM AGENT

INSURANCE SERVICES
14146 SE Stark Street, Portland 97233
valerie@marknguyeninsurance.com |
www.marknguyeninsurance.com
Valerie Tewksbury(503) 253-2110

MARQUIS CENTENNIAL

SENIOR LIVING & SERVICES
725 SE 202nd Avenue, Portland 97233
ajstone@marquiscompanies.com |
www.marquiscompanies.com
Amy Stone.....(503) 665-3118

MARQUIS MILL PARK

SENIOR LIVING & SERVICES
1475 SE 100th Avenue, Portland 97216
jsmeltzer@marquiscompanies.com |
www.marquiscompanies.com
Jennifer Smeltzer(503) 262-6000

MARS ON LIFE VO

BUSINESS & PROFESSIONAL SERVICES
417 E. Powell Blvd., Gresham 97030
smars@artistsrep.org | susannahmars.com
Susannah Mars-Johnson(503) 260-4840

LET US MANAGE YOUR PORTLAND METRO AREA RENTAL PROPERTY

Our goal is to maximize our property owners' net income from their Real Estate investments with the least amount of risk and without hassles for our clients. We primarily focus on managing single family rental homes and small multiplexes in Clackamas and Eastside Multnomah counties.



KOHLER MEYERS O'HALLORAN, INC.



Residential
Commercial Sales & Leasing
Property Management
Project Development
Consulting

15 NE 3rd St., Gresham OR 97030
www.KMORealEstate.com
503.661.8000

MATT LAGASSE - THE BROKER NETWORK, LLC

REAL ESTATE SERVICES

320 N. Main Ave. #213, Gresham 97030

matt@mattlagasse.com |

www.thebrokeretworkrealty.com/agent/matt-lagasse

Matt Lagasse(971) 506-4432

MCCORD CONSTRUCTION, LLC

HOME IMPROVEMENT BUILDING SERVICES

735 SE Mt. Hood Hwy, Gresham 97080

mccordconst@yahoo.com |

mccordconstructionllc.com

Donivon McCord(503) 348-2366

MCDONALD & WETLE INC.

COMMERCIAL BUILDING SERVICES

2020 NE 194th Avenue, Portland 97230

danc@mcdonaldwetle.com |

www.mcdonaldwetle.com

Dan Corcoran(503) 667-0175

MCKINSTRY

COMMERCIAL BUILDING SERVICES

16790 NE Mason Street, Portland 97230

portlandoffice@mckinstry.com |

www.mckinstry.com

Damon Cannon(503) 331-0234

MC MENAMINS EDGEFIELD

RESTAURANTS, FOOD, & BARS

2126 SW Halsey Street, Troutdale 97060

reneer@mcmenamins.com |

www.mcmenamins.com/Edgefield

Renee Rank Ignacio(503) 669-8610

MERCY CORPS NORTHWEST

NON-PROFIT CIVIC

43 SW Naito Pkwy, Portland 97204

Training.mcne@mercycorps.org |

www.mercycorpsnw.org

Bobbie Stewart(503) 896-5070

METRO

CITY & REGIONAL GOVERNMENT

600 NE Grand Avenue, Portland 97232

shirley.craddick@oregonmetro.gov |

www.oregonmetro.gov

Shirley Craddick, Metro Councilor

.....(503) 797-1547

METRO EAST WEB ACADEMY

EDUCATION

50 NW 5th Street, Gresham 97030

gray@mewebacademy.org |

www.mewebacademy.org

Dr. David Gray(503) 258-4790

METROEAST COMMUNITY MEDIA

VIDEO PRODUCTION AND TRAINING

829 NE 8th St, Gresham 97030

monica@metroeast.org | www.metroeast.org

Monica Weitzel(503) 667-8848

**MICHAEL PATRICK -
PREMIERE PROPERTY GROUP, LLC**

REAL ESTATE SERVICES

501 NE Hood Ave, Suite 310, Gresham 97030

michael@piazapattick.com |

michaelpatricks.com

Michael Patrick(503) 481-0900

MICROCHIP TECHNOLOGY INC.

DISTRIBUTING, MANUFACTURING & INDUSTRIAL

21015 SE Stark Street, Gresham 97030

dan.malinarc@microchip.com |

www.microchip.com

Dan Malinaric(503) 669-5500

MIGRATION BREWING

BREWERIES & WINERIES

18188 NE Wilkes Road, Gresham 97230

colin@migrationbrewing.com |

www.migrationbrewing.com

Colin Rath(971) 274-3770

MOEN MACHINERY

DISTRIBUTING, MANUFACTURING & INDUSTRIAL

268 NE Hogan Rd., Gresham 97030

greg@moenmachinery.com |

www.moenmachinery.com

Greg Moen(503) 666-9159

**MORTGAGE EXPRESS,
NMLS-62738 & NMLS-205436**

MORTGAGE AND LENDING SERVICES

9200 SE Sunnybrook Blvd., Clackamas 97015

teamjensen@mtgxps.com |

teamjensen.mtgxps.com

Neil & Deena Jensen(503) 329-5622

MOTEL 6

LODGING

1572 NE Burnside Road, Gresham 97030

m68735bo@6franchise.com | www.motel6.

com/en/motels.or.gresham.8735.html

Rocky Patel(503) 666-9545

MOUNTAINVIEW CHRISTIAN CHURCH

CHURCHES

1890 NE Cleveland Ave., Gresham 97030

info@mvcclive.com | mvcclive.com

Tom Santillanes(503) 492-1200

**45 years of experience***Extensive knowledge, puts clients first!***Leslee Dirk****ERA Freeman & Associates**

Realtor of the Year 2015 - East Metro Association of Realtors

5 Star Real Estate Agent for last 11 years

lesleedir@eraglobal.com

503-318-09271685 E Powell Blvd.,
Gresham OR 97030**MetroEast**
COMMUNITY MEDIA

METROEAST.ORG

971-277-6716

Info@MetroEast.org

WHAT WE DO**NEW CLASSES****HIRE US**

Follow Us On

Join Our Community 829 NE 8th Street Gresham, OR 97030

MPG MARKETING & MAILING SERVICES

ADVERTISING - MARKETING & WEB SERVICES

mikegiannetti@aol.com |

www.mpgmarketingandmailing.net

Mike Giannetti(503) 231-7154

MT HOOD REALTY - KAREN CROSTON & ROD BARKER

REAL ESTATE SERVICES

201 SE Dora Street, Troutdale 97060

info@mthoodrealty.com |

www.mthoodrealty.com

Rod Barker(503) 329-1249

MT. HOOD ADULT DAY CENTER

SENIOR LIVING & SERVICES

376 NE 219th Avenue, Gresham 97030

judith@mthoodadulthooddaycenter.com |

mthoodadulthooddaycenter.com

Judith O'Connell(503) 512-7373

MT. HOOD AQUATICS

P O Box 129, Gresham 97030

vidal3694@comcast.net |

www.mthoodaquatics.org

Juan Vidal(503) 491-7243

MT. HOOD COMMUNITY COLLEGE

EDUCATION

26000 SE Stark Street, Gresham 97030

ourmhcc@mhcc.edu | www.mhcc.edu

Lisa Skari(503) 491-7212

MT. HOOD COMMUNITY COLLEGE SMALL BUSINESS DEVELOPMENT CENTER

BUSINESS & PROFESSIONAL SERVICES

26000 SE Stark St., Gresham 97030

bizcenter@mhcc.edu | www.mhccbizcenter.org

Gerri Raisanen(503) 491-7658

MT. HOOD GLASS

HOME IMPROVEMENT BUILDING SERVICES

530 E Powell Blvd., Gresham 97030

info@mthoodglass.com | mthoodglass.com

Lisa Brown(503) 667-0290

MT. HOOD HOSPICE

SENIOR LIVING & SERVICES

39065 Pioneer Blvd., Sandy 97055

rcfranke@mthoodhospice.org |

www.mthoodhospice.org

Rhonda Franke(503) 668-5545

MT. HOOD INSURANCE

INSURANCE SERVICES

21707 SE Stark St., Gresham 97030

Ryan@MtHoodInsurance.com |

www.MtHoodInsurance.com

Ryan Richter(503) 808-1111

MT. HOOD LANES, INC.

SPORTS & RECREATION

2311 E Powell Blvd., Gresham 97080

mthoodlanes@comcast.net |

www.mthoodlanes.com

Joshua Lott(503) 492-9820

MT. HOOD SENIOR SOLUTIONS

SENIOR LIVING & SERVICES

376 NE 219th Avenue, Gresham 97030

info@mthoodseniorsolutions.com |

www.mthoodseniorsolutions.com

Cathy Fallon(971) 400-7030

MTN. VIEW FAMILY PRACTICE, PC

HEALTHCARE - MEDICAL

24900 SE Stark Street, Gresham 97030

info@mtviewfamilypractice.com |

www.mtnviewfamilypractice.com

Jessica Baird(503) 665-1010

MULTNOMAH COUNTY SHERIFF'S OFFICE

CITY & REGIONAL GOVERNMENT

501 SE Hawthorne, Portland 97214

sheriff@mcsos.us | www.mcsos.us

Michael Reese(503) 988-4300

MULTNOMAH FALLS LODGE

ATTRACTIONS

P O Box 367, Troutdale 97060

mfchris@yahoo.com |

www.multnomahfallsdodge.com

Chris Willis(503) 695-2376

MULTNOMAH LEARNING ACADEMY - K-8 PUBLIC CHARTER SCHOOL

EDUCATION

22565 NE Halsey Street, Fairview 97024

jlindenthal@mla.k12.or.us | www.mla.k12.or.us

Jo Ann Lindenthal(503) 405-7868

MY FATHER'S HOUSE, A COMMUNITY SHELTER

CHILDREN & FAMILY NON-PROFIT

PO Box 1147, Gresham 97030

andrea@familyshester.org |

www.familyshester.org

Andrea Pickett(503) 492-3046

MY PLACE HOTEL PORTLAND EAST

LODGING

2384 NE 178th Ave., Portland 97230

portlandeastgm@myplacehotels.com |

www.myplacehotels.com/my-place-hotel-

portland-east-or?chebs=googlebl-portlandeast

Jen Thomas(503) 807-4427

NANCY'S FLORAL INC.

RETAIL - SPECIALTY

620 NE Burnside Road, Gresham 97030

orders@nancysfloral.com |

www.nancysfloral.com

Rob Cook(503) 661-0911

NANNA'S PLACE

RESTAURANTS, Food, & Bars

1000 N Main Avenue, Gresham 97030

nannasplace2021@gmail.com |

www.facebook.com/Nannasplace2021

Linda Roth(503) 328-8491

NAVIGATE FINANCIAL

FINANCIAL SERVICES

sandra@navigatefinancialnw.com |

www.navigatefinancialnw.com

Sandra Boggs(360) 402-3200

NECTAR - GRESHAM

RETAIL - SPECIALTY

505 NW Burnside Rd., Gresham 97030

info@nectarpdx.com | nectar.store/gresham

Michelle Karlebach(503) 512-8123

NEW YORK LIFE - WILLIAM AMSDEN

INSURANCE SERVICES

10260 SW Greenburg Road, Portland 97223

wamsden@ft.newyorklife.com |

www.newyorklife.com/agent/wamsden

William (Bill) Amsden(503) 206-2095

NICHOLAS RESTAURANT

RESTAURANTS, FOOD, & BARS

323 N Main Avenue, Gresham 97030

nicholascaters@gmail.com |

www.nicholasrestaurant.com

Hilda Williams(503) 666-3333

We love it here.

BANKING | LENDING | COMMUNITY

Learn more at onpointcu.com.**Gresham Branch**

1754 NW Civic Dr.

Gresham, OR

East Gresham Branch

2497 SE Burnside Rd.

Gresham, OR

Cherry Park Branch

2457 SW Cherry Park Rd.

Troutdale, OR

ACCOUNTS • LENDING • BUSINESS • CREDIT CARDS • HOME LOANS

503.228.7077 | 800.527.3932 | onpointcu.com

Federally insured by NCUA. Equal Housing Opportunity.

NIPPON EXPRESS USA, PORTLAND BRANCH

PRINTING, COPYING & SHIPPING

8520 NE Alderwood Street, Portland 97220

mike.hirokawa@nipponexpress.com |

www.nipponexpressusa.com

Mike Hirokawa(503) 281-6400

NORTHWEST ACCOUNTING PARTNERS

ACCOUNTING & TAX SERVICES

320 N Main Avenue, Gresham 97030

amanda@nwaccountingpartners.com |

www.nwaccountingpartners.com

Amanda Garcia(503) 328-9425

NORTHWEST BENEFIT STRATEGIES LLC

INSURANCE SERVICES

Megan@NorthwestBenefitStrategies.com |

www.northwestbenefitstrategies.com

Megan Thornton(503) 925-5955

**NORTHWEST GYMNASTICS
TRAINING CENTER**

SPORTS & RECREATION

2919 NW Division St, Gresham 97030

tina@nwgymnasticstc.com |

www.nwgymnasticstc.com

Tina Stinson(503) 512-8584

NORTHWEST REVERSE MORTGAGE

MORTGAGE AND LENDING SERVICES

10121 SE Sunnyside Rd, Clackamas 97015

info@nwreverse.com | www.nwreverse.com

Breazy Wirth(503) 427-1667

NORWEX - KATHY HILL

HOME CLEANING & SUPPLIES

begreenwithkathysteam@gmail.com |

www.kathyh.norwex.biz

Kathy Hill(503) 680-1356

NW NATURAL

PUBLIC UTILITIES

250 SW Taylor St., Portland 97204

nina.carlson@nwnatural.com |

www.nwnatural.com

Nina Carlson(503) 721-2474

NW WEB SOLUTIONS

ADVERTISING - MARKETING & WEB SERVICES

annette@nwwebsolutions.com |

www.nwwebsolutions.com

Annette Freetage(503) 421-4435

OASIS SENIOR ADVISORS

SENIOR LIVING & SERVICES

sdickinson@youroasisadvisor.com |

www.oasisseioradvisors.com/pdx

Seth Dickinson(503) 348-2822

OFFICE DEPOT

OFFICE SUPPLIES & SERVICES

2205 NE Burnside, Gresham 97030

ods00977@officedepot.com |

www.officedepot.com

Ben Gardner(503) 618-8812

OLIVE GARDEN RESTAURANT

RESTAURANTS, FOOD, & BARS

2330 SE Burnside Road, Gresham 97080

jrwatson@olivegarden.com |

www.olivegarden.com

Jeff Watson(503) 669-3600

ON SEMICONDUCTOR

DISTRIBUTING, MANUFACTURING & INDUSTRIAL

23400 NE Glisan Street, Gresham 97030

tad.dierckes@onsemi.com | www.onsemi.com

Tad Dierckes(503) 618-4344

**ONPOINT COMMUNITY CREDIT UNION EAST
GRESHAM FRED MEYER**

BANKING & CREDIT UNIONS

2497 SE Burnside Rd. Ste. 101, Gresham 97030

info@onpointcu.com | www.onpointcu.com

Alyssa Gonzales(503) 228-7077 ext. 6465

**ONPOINT COMMUNITY CREDIT UNION
GRESHAM**

BANKING & CREDIT UNIONS

1700 NW Civic Dr Ste 100, Gresham 97030

info@onpointcu.com | www.onpointcu.com

Jody Tolvstad(503) 228-7077 ext. 5650

OOMA BUSINESS, INC.

COMMUNICATION

10260 SW Greenburg Road, Portland 97223

paul.green@ooma.com | www.ooma.com

Paul Green(503) 743-6464

**ENERGY REIMAGINED**

More Comfort, Less Impact



Natural Gas offers reliable heat, more control for precise cooking, and lower energy bills with high-efficiency appliances.

Plus with Renewable Natural Gas, we can help the environment by turning waste into low-carbon, reliable energy. Soon to be delivered through the existing pipeline system, so you can make a difference without changing a thing.

It's your energy, reimagined.



Learn more at **LESS WE CAN**.com

OPTAVIA - SUE PIAZZA

NUTRITION

Gresham 97030

sue@piazzapattick.com |www.gettingushealthy.com

Sue Piazza.....(503) 926-4419

OREGON INSURANCE AGENCY

INSURANCE SERVICES

55 E. Powell Blvd., Gresham 97030

rick@oregoninsurance.net |www.oregoninsurance.net

Rick Stubblefield.....(503) 665-2649

OREGON PROPERTY MANAGEMENT, LLC

PROPERTY MANAGEMENT

8440 NE Alderwood, Portland 97220

matt.wand@yoshida.com |www.oregonpropertymgmt.com

Matt Wand.....(503) 731-3701

OREGON TRAIL ACADEMY

EDUCATION

36225 SE Proctor Road, Boring

97009

rachel.weeks@ortrail.k12.or.us |oregontrailschools.com/ota

Rachel Weeks.....(503) 668-5521

OREGONIANS CREDIT UNION

BANKING & CREDIT UNIONS

247 E Powell Blvd., Gresham 97030

brittani@ofcu.com | www.oregonianscu.com

Brittani Renick.....(503) 239-5336

ORIENT AUTO SERVICE, INC.

AUTOMOTIVE

1550 SE Orient Drive, Gresham 97080

info@orientautoservice.com |www.orientautoservice.com

Donna Wallace.....(503) 667-3900

ORIGINAL ROADHOUSE GRILL

RESTAURANTS, FOOD, & BARS

2370 SE Burnside Road, Gresham 97080

jhenry@originalroadhousegrill.com |www.originalroadhousegrill.com

Justin Henry.....(503) 666-2624

OWENS CORNING GRESHAM FOAM PLANT

DISTRIBUTING, MANUFACTURING & INDUSTRIAL

18456 NE Wilkes Road, Portland 97230

lucas.ghaemi@owenscorning.com |www.owenscorning.com

Luc Ghaemi.....(503) 405-1011

PACIFIC NW OFFICE FURNITURE DESIGN, LLC

OFFICE SUPPLIES & SERVICES

21733 SE Stark St., Gresham 97030

lexi@pacificnwofficedesign.com |www.pacificnwofficefurnituredesign.com

Lexi Blundon.....(503) 840-8895

PACIFIC OFFICE AUTOMATION

PRINTING, COPYING & SHIPPING

14747 NW Greenbrier Parkway, Beaverton 97006

ethan.faust@pacificoffice.com |www.pacificoffice.com

Ethan Faust.....(503) 601-2343

PACIFIC RESIDENTIAL MORTGAGE

MORTGAGE AND LENDING SERVICES

9200 SE Sunnybrook Blvd, Clackamas 97015

becca.bliven@pacresmortgage.com |www.pacresmortgage.com

Becca Bliven.....(503) 496-0413

PARK'S NURSERY

GARDEN & LANDSCAPING

2100 SE 282nd, Gresham 97080

rod@parksnursery.com | www.parksnursery.com

Rod Park.....(503) 663-3715

PATHWAY CHURCH

CHURCHES

3848 NE Division Street, Gresham 97030

info@pathwaychurch.net |www.pathwaychurch.net

Lance Logue.....(503) 667-1515

PATTI GAGE AND ROB TOO - BERKSHIRE HATHAWAY HOME SERVICES REAL ESTATE

REAL ESTATE SERVICES

9201 SE 91st Ave #200, Happy Valley 97086

pgage@bhhsnw.com | PattiGageAndRobToo.com

Rob Gage.....(503) 939-7708

PAYCHEX

BUSINESS & PROFESSIONAL SERVICES

www.paychex.com

Moriah Shay.....(503) 890-3360

PAYROLL ON TIME, INC.

BUSINESS & PROFESSIONAL SERVICES

4410 SE Woodstock Blvd, Portland 97206

thad.davis@payrollontime.net |www.payrollontime.net

Thad Davis.....(503) 756-0090

PDG CONSTRUCTION SERVICES, INC.

COMMERCIAL BUILDING SERVICES

27600 SW 95th Avenue, Wilsonville 97070

brian@pdginc.com | pdginc.com/our-team

Brian Lessler.....(503) 674-3200

PDX EASTSIDE TRAINING

SPORTS & RECREATION

1228 NE Kelly Ave., Gresham 97030

hello@pdxeastside.com |www.pdxeastside.com

Drew Petersen.....(503) 912-8956

PEDIATRIC ASSOCIATES OF GRESHAM

HEALTHCARE - MEDICAL

2150 NE Division Street, Gresham 97030

kkollar@greshampediatrics.com |www.greshampediatrics.com

Greg Emmerich, MD.....(503) 661-4200

PELLA VINYL - PORTLAND OPERATIONS

DISTRIBUTING, MANUFACTURING & INDUSTRIAL

18600 NE Wilkes Road, Portland 97230

mccorda@pella.com | www.pella.com

Adi McCord.....(503) 405-9075

PERFECT FLUSH

PLUMBING

24023 NE Shea Lane #104, Wood Village 97060

office@perfectflushpdx.com |www.perfectflushpdx.com

Heather Deveney.....(503) 985-9461

PERSIMMON COUNTRY CLUB

SPORTS & RECREATION

500 SE Butler Road, Gresham 97080

sam@persimmoncountryclub.com |www.persimmoncountryclub.com

Samantha Daw.....(503) 674-3259

PINNACLE COMPUTER SOLUTIONS, LLC

COMPUTER SERVICES, INFORMATION TECHNOLOGY

randy.cummings@pinnaclecomputersolutions.com |www.pinnaclecomputersolutions.com

Randy Cummings.....(503) 318-1552



> Where Oregonians do their banking.

“ I love my bank [credit union]. Seriously, everyone at my branch is amazing. Changing to Oregonians was the best thing I ever did with my finances. Thanks for being awesome, ya'll! ”

-Sonja L. ★★★★★

OregoniansCU.com

Membership open to those who live or work in Clackamas, Multnomah and Washington counties.




PINNACLE TECHNOLOGIES FOR NON-PROFITS

NON-PROFIT CIVIC
4233 SE 182nd Ave, Gresham 97030
randy.cummings@pinnacletechfnp.org |
pinnacletechfnp.org
Randy Cummings.....(503) 318-1552

PLAID PANTRIES, INC.

RETAIL - GROCERY
1055 NE Kane, Gresham 97030
carmen@plaidpantry.com |
www.plaidpantry.com
Carmen Kringen.....(503) 646-4246

PLATO'S CLOSET

RETAIL - SPECIALTY
200 NW Burnside Rd., Gresham 97030
george@mercollic.com |
www.platosclosetgresham.com
George Merkl.....(503) 786-9922

POIC + RAHS

EDUCATION
2208 SE 182nd Avenue, Portland 97233
jmcferrin@portlandoic.org | www.portlandoic.org
Joe McFerrin II.....(503) 797-7226

PORT OF PORTLAND

CITY & REGIONAL GOVERNMENT
7200 NE Airport Way, Portland 97218
teresa.carr@portofportland.com |
www2.portofportland.com
Teresa Carr.....(503) 415-6000

PORTLAND COLUMBIA SYMPHONY

ARTS, CULTURE & ENTERTAINMENT
5830 NE Alameda, Portland 97213
rphillips@pcsymphony.org | pcsymphony.org
Rebekah Phillips.....(503) 234-4077

PORTLAND GENERAL ELECTRIC

PUBLIC UTILITIES
121 SW Salmon Street, Portland 97204
andrew.speer@pgn.com |
www.portlandgeneral.com
Andrew Speer.....(503) 464-7486

PORTLAND HIGHLAND GAMES ASSOCIATION

ARTS, CULTURE & ENTERTAINMENT
P O Box 25034, Portland 97298
sponsorship@phga.org | www.phga.org
Nancy Truszkowski.....(503) 293-8501

POWELL VALLEY ASSISTED LIVING AND MEMORY CARE COMMUNITY

SENIOR LIVING & SERVICES
4001 SE 182nd Avenue, Gresham 97030
info@powellvalley.net | www.powellvalley.net
Trevor Wart.....(503) 665-2496

PRECISION BODY & PAINT OF GRESHAM INC.

AUTOMOTIVE
2515 NW Eleven Mile Ave, Gresham 97030
merryg@precisionfirst.com |
www.precisionfirst.com
Merry Green.....(503) 667-8280

PREMIERE PROPERTY GROUP, LLC- MARGUERITE TRUTTMAN, REALTOR IN OR AND WA

REAL ESTATE SERVICES
10135 SE Sunnyside Rd., Clackamas 97015
realtor.marguerite@gmail.com |
realtormarguerite.com
Marguerite Truttman.....(503) 329-8793

PRESTIGE POST-ACUTE AND REHAB - GRESHAM

SKILLED NURSING & REHAB
405 NE 5th Street, Gresham 97030
mbrutsman@greshamcareandrehab.com |
www.prestigecare.com
Monica Brutsman.....(503) 666-5600

PRESTIGE SENIOR LIVING HUNTINGTON TERRACE

SENIOR LIVING & SERVICES
1410 NE Cleveland Avenue, Gresham 97030
huntingtonterrace@prestigecare.com |
www.prestigecare.com
Sheryl Murdock.....(503) 465-1404

PUROCLEAN OF HAPPY VALLEY

DISASTER RESTORATION
Happy Valley 97086
dsapanie@puroclean.com |
puroclean.com/phv-or
Diriba Sapanie.....(503) 894-6100



Celebrate Life
at Every Age

At **Prestige Senior Living Huntington Terrace** and **Homewood Heights Assisted Living Community**, our goal is to provide quality care with a strong focus on wellness.

We believe that it is not enough to simply care for those we serve, but to also provide residents ways to stay active and engaged by nurturing body, mind and spirit.

Our assisted living communities proudly offer Celebrations, a wellness-focused lifestyle program designed to help you celebrate life and feel your best, no matter your age.

Are you ready to celebrate life with us? Call one of our communities below to schedule a tour.

Prestige Senior Living Huntington Terrace
1410 NE Cleveland Ave.
Gresham, OR 97030
(503) 465-1404

Homewood Heights Assisted Living Community
17999 SE River Rd.
Milwaukie, OR 97267
(503) 659-6600



Prestige Senior Living, L.L.C.
www.PrestigeCare.com

QUALITY INN

LODGING

2752 NE Hogan Drive, Gresham 97030
mariaagonzalez@waytomanage.com |
www.choicehotels.com/oregon/gresham/quality-inn-hotels/or239?source=gyxt
Maria Gonzalez.....(503) 907-1777

RE/MAX EQUITY GROUP - MATT CALLISON

REAL ESTATE SERVICES

2072 NE Burnside Road, Gresham 97030
callisonm@hotmail.com |
mattcallison.equitygroup.com
Matt Callison.....(503) 465-3122

REAP INC.

CHILDREN & FAMILY NON-PROFIT

10808 NE Halsey, Portland 97220
info@reapusa.org | www.reapusa.org
Becky Bennett.....(503) 688-2784

REGENCY GRESHAM NURSING & REHABILITATION

SKILLED NURSING & REHAB

5905 SE Powell Valley Road, Gresham 97080
aknippers@regency-pacific.com |
www.regency-pacific.com
Tony Knippers.....(503) 665-1151

RELIABLE FENCE & CONSTRUCTION

HOME IMPROVEMENT BUILDING SERVICES

2105 SE 190th, Portland 97233
reliablefence@msn.com |
www.reliablefencecompany.com
Jerry Berger.....(503) 669-8148

RESOLUTIONS

ADVERTISING - MARKETING & WEB SERVICES

sue@resolutions-inc.net | resolutions-inc.net
Sue Hughes.....(503) 665-9345

REYNOLDS SCHOOL DISTRICT

EDUCATION

1204 NE 201st Avenue, Fairview 97024
communications@rsd7.net |
www.reynolds.k12.or.us
Stephanie Field.....(503) 661-7200

RHINO INDUSTRIAL, INC.

COMMERCIAL BUILDING SERVICES

rhinowelding@frontier.com
Doug Burchak.....(503) 260-8780

RIEGELMANN'S APPLIANCE

APPLIANCES

301 E Powell Blvd., Gresham 97030
mike@riegelmanns.com | www.riegelmanns.com
Michael Riegelmann.....(503) 665-4158

RIGHT WAY BOOKKEEPING

ACCOUNTING & TAX SERVICES

21324 SE Alder Street, Gresham 97030
rightwaybk@gmail.com | www.rightwaybk.com
Linda Wilken.....(503) 348-7798

RIVERMARK COMMUNITY CREDIT UNION

BANKING & CREDIT UNIONS

1058 NW Sleret Avenue, Gresham 97030
aunderberg@rivermarkcu.org |
www.rivermarkcu.org
Ashley Underberg.....(503) 626-6600

RIVERVIEW COMMUNITY BANK

BANKING & CREDIT UNIONS

225 NE Burnside Road, Gresham 97030
brendafelix@riverviewbank.com |
www.riverviewbank.com
Brenda Felix.....(503) 912-5400

ROBERT MCDONALD

INDIVIDUAL & RETIRED

rmcd777@comcast.net
Robert McDonald.....(503) 709-5852

ROCKWOOD CDC & SUNRISE CENTER

EVENT FACILITIES

18901 E. Burnside, Gresham 97233
info@rockwoodcdc.org | www.rockwoodcdc.org
Lynn Ketch.....(503) 847-9163

ROCKWOOD SOLID WASTE, INC.

PUBLIC UTILITIES

2550 NW Burnside Court, Gresham 97030
ian@rockwoodsolidwaste.com |
www.rockwoodsolidwaste.com
Ian Hefeneider.....(503) 666-3488

ROG3RS REALTY INC

REAL ESTATE SERVICES

Troutdale 97060
kirstan.rogers@kw.com | rog3rsrealty.com
Kirstan Rogers.....(503) 997-7549

RP COMPUTING

COMPUTER SERVICES, INFORMATION TECHNOLOGY

P O Box 1082, Gresham 97030
randy@rpcomputing.biz | www.rpcomputing.biz
Randy Paden.....(503) 708-3859

SAFE AIR NETWORK (SAN)

3190 NE Lancaster Drive, Salem 97305

jon@safeairnetwork.com | safeairnetwork.com
Jon Thomas.....(503) 585-5582

SALAD HEROES

RESTAURANTS, FOOD, & BARS

58 NE Burnside Rd., Gresham 97030
saladheroes@gmail.com |
www.saladheroes.com
Melissa Stiers.....(971) 274-6455

SANDY RIVER MARKETING INC.

ADVERTISING - PROMOTIONAL PRODUCTS

2208 NW Birdsdales Avenue, Gresham 97030
dondevore@sandyrivermarketing.com |
www.sandyrivermarketing.com
Donald Devore.....(503) 492-2348

SATURN BARTER COMPANY

ADVERTISING - MARKETING & WEB SERVICES

1800 A W 4th Plain Blvd., Vancouver 98661
jamie@saturnbarter.com |
www.saturnbarter.com
Jamie Radcliffe-LaValley.....(360) 787-4343

SAVVY CARE MOBILITY

TRANSPORTATION

532 N Main Ave, Gresham 97030
savvycaresmobility@gmail.com |
savvycaresmobility.wixsite.com/website
Chloe Taylor.....(360) 339-2792

SAWTOOTH ROOFING COMPANY

HOME IMPROVEMENT BUILDING SERVICES

5230 NE 109th Avenue, Portland 97220
office@sawtoothroofing.com |
www.sawtoothroofing.com
Anthony "Pete" Guzzi.....(503) 258-8017

SCOTT THOMAS

INDIVIDUAL

Portland 97230
scott.thomas.pdx@gmail.com
Scott Thomas.....(971) 409-5582

SECOND HOME OF ECUMENICAL MINISTRIES OF OREGON

NON-PROFIT CIVIC

0245 SW Bancroft St., Portland 97239
jpratt@emoregon.org |
emoregon.org/second-home
Jenny Pratt.....(503) 221-1054

SEND OUT CARDS - GAIL FULLER

BUSINESS & PROFESSIONAL SERVICES

Gresham 97030
gailzcardz@gmail.com |
www.sendoutcards.com/177137
Gail Fuller.....(503) 481-3261

SERVPRO OF GRESHAM

DISASTER RESTORATION

21640 SE Stark Street, Gresham 97030
www.servprogresham.com
Dennis Mesford.....(503) 665-7752



Your testing partner for your life at work, home and school.

COVID-19 testing available by appointment.
Employer volume discount available.

- Drug & Alcohol Screening / Background Checks
- Urine / Hair / Nail / Saliva Testing
- Pre-employment / DOT / Randoms / Supv. Training
- DNA / Paternity / Infidelity / Immigration
- Wellness / Clinical / Lab Tests

12003 NE Ainsworth Circle # 103, Portland OR 97220 | 503.477.7748

www.SmartLabsNow.com

SHOP GIRL CONSIGNMENT

RETAIL - SPECIALTY
111 N. Main Avenue, Gresham 97030
shopgirlconsignment@gmail.com |
shopgirlconsignment.com
Thea Enos.....(503) 618-1111

SJS ACCESSIBLE APPAREL

RETAIL - SPECIALTY
Gresham 97030
sjsaccessibleapparel@gmail.com |
www.facebook.com/SJSAccessibleApparel
Jennifer Dormandy.....(503) 516-2304

SMART LABS NOW

BUSINESS & PROFESSIONAL SERVICES
12003 NE Ainsworth Circle, Portland 97220
bfaith1@smartlabsnow.com |
www.SmartLabsNow.com
Barb Faith.....(503) 477-7748

SMITH MEMORIAL PRESBYTERIAN CHURCH

CHURCHES
2420 NE Fairview Avenue, Fairview 97024
bradbusiek@yahoo.com |
www.smithmemorialpres.org
Brad Busiek(503) 667-6800

SNAP FITNESS

FITNESS
400 NW Eastman Parkway, Gresham 97030
Gresham@snapfitness.com |
www.snapfitness.com
Kim Hopper.....(971) 293-3422

SNOWCAP COMMUNITY CHARITIES

CHILDREN & FAMILY NON-PROFIT
17788 SE Pine, Gresham 97233
info@snowcap.org | www.snowcap.org
Kirsten Wageman(503) 405-4293

SOCIAL SECURITY AND FINANCIAL STRATEGIES SEMINARS

FINANCIAL SERVICES
9955 SE Washington, Portland 97216
tammy@vonborstel.com | vonborstel.com
Wayne Von Borstel(503) 257-6969

SOLUTIONS IT

COMPUTER SERVICES, INFORMATION TECHNOLOGY
123 E. Powell Blvd. #102, Gresham 97030
info@helpmesolutions.com |
www.solutionsit.net
Jacob Dunaway.....(541) 370-2804

SOROPTIMIST INTERNATIONAL OF GRESHAM

NON-PROFIT CIVIC
P O Box 802, Gresham 97030
sigresham@soroptimist.net | www.sigresham.org
Alina Rocha Johnson(971) 801-0209

SPENCER LUND AGENCY

INSURANCE SERVICES
21901 NE Halsey, Fairview 97024
slund@farmersagent.com |
www.farmersagent.com/slund
Spencer Lund.....(971) 231-4031

SPORTS MANAGEMENT WORLDWIDE

SPORTS & RECREATION
1100 NW Glisan, Portland 97209
lynn@smww.com | www.smww.com
Lynn Lashbrook(503) 445-7105

SPRINGDALE JOB CORPS

EMPLOYMENT SERVICES
31224 E Historic Columbia River Highway, Troutdale 97060
moreschi.tyna@jobcorps.org |
www.springdalejobcorps.gov
Tyna Moreschi.....(503) 695-2245

SPUD MONKEY'S

RESTAURANTS, FOOD, & BARS
1716 NW Fairview Drive, Gresham 97030
jasonharper@spudmonkeys.com |
www.spudmonkeysnw.com
Jason Harper.....(503) 492-3880

SRG COMMUNITY CONSULTING, LLC EVENT & WEDDING SERVICES

Gresham 97030
shannon@SRGCommunityConsulting.com
Shannon Chisom(503) 750-3785

STATE FARM - ROB HENDRICKSON AGENCY

INSURANCE SERVICES
2951 NW Division St., Gresham 97030
rob@mydpdxagency.com |
www.mydpdxagency.com
Rob Hendrickson.....(503) 661-5205

SUBURBAN AUTO GROUP

AUTOMOTIVE
36936 Highway 26, Sandy 97055
erinns@suburbanautogroup.com |
www.suburbanautogroup.com
Erinn Sowle(503) 668-5555

SUGAR CUBED

BAKERY
101 N. Main Avenue, Gresham 97030
sugarcubedcc@gmail.com |
sugarcubedcakes.com
Kayla Brown(503) 512-7871

SUN GLOW INC. HEATING, AIR CONDITIONING & REFRIGERATION

HEATING & COOLING
2428 SE 105th Avenue, Portland 97216
davidg@sunglowinc.com | www.sunglowinc.com
David Golobay(503) 253-7789

SUNNY HAN'S WOK & GRILL

RESTAURANTS, FOOD, & BARS
305 N Main Avenue, Gresham 97030
judyahan@comcast.net | www.sunnyhans.com
Judy Han.....(503) 666-3663

SUPER 8 MOTEL

LODGING
121 NE 181st Avenue, Portland 97230
GMGreshamSuper8@gmail.com |
www.super8.com
Judy Fang(503) 661-5100

TANY'S BAKERY LLC

BAKERY
22605 NE Halsey St. Suite E, Fairview 97024
tanisbakery@yahoo.com | www.facebook.com/tanysbakeryoregon
Shelly Dominguez(503) 666-6060

TANY'S COFFEE SHOP LLC

COFFEE
3030 NE Hogan Dr Ste C, Gresham 97030
tanyscoffeeshop@gmail.com |
www.facebook.com/Tanys.Coffeeshop
Rudy Loeza(503) 912-3827

TAX MINIMIZERS OF OREGON INC.

FINANCIAL SERVICES
23345 SE Stark Street, Gresham 97030
pam@taxminimizers.com |
www.taxminimizers.com
Pam Harkin.....(503) 665-1040

THE AMERICAN LEGION POST #30

NON-PROFIT CIVIC
Gresham 97030
sureword2@hotmail.com
Grant McAllister.....(510) 427-4444

THE BOEING COMPANY

DISTRIBUTING, MANUFACTURING & INDUSTRIAL
19000 NE Sandy Blvd, Portland 97230
michael.d.james4@boeing.com |
www.boeing.com
Michael James.....(206) 655-1131

THE BOLD ORANGE

ADVERTISING - MARKETING & WEB SERVICES
406 NE 4th St., Suite 126, Gresham 97030
hello@theboldorange.com |
www.theboldorange.com
Kayla Viramontes.....(971) 256-8426

THE CENTER FOR MEN'S & WOMEN'S UROLOGY

HEALTHCARE - MEDICAL
24076 SE Stark Street, Gresham 97030
trockove@1uro.com | www.centerforurology.com
Shammai Rockove.....(503) 492-6510

THE COOLEY GROUP - COUNTRY FINANCIAL

FINANCIAL SERVICES
1549 NE Market Dr., Fairview 97024
luke.cooley@countryfinancial.com |
www.representatives.countryfinancial.com/luke.cooley
Luke Cooley.....(503) 676-1021

THE COTTAGES SENIOR LIVING MEMORY CARE

SENIOR LIVING & SERVICES
1808 SE 182nd Avenue, Portland 97233
ed@thecottagesliving.com |
thecottagesliving.com
Dana Bando(503) 492-6942

THE GRESHAM TOY SHOP

RETAIL - SPECIALTY
126 N. Main Ave., Gresham 97030
coolstuff@thegreshamtoyshop.com |
www.facebook.com/DowntownGresham
David Ligatich(503) 489-5631

THE HOPPY BREWER

RESTAURANTS, FOOD, & BARS
328 N Main Avenue, Gresham 97030
thehoppybrewer@gmail.com |
www.oregonshoppypplace.com
Steve Krause.....(503) 328-8474

THE INTERTWINE ALLIANCE FOUNDATION

NON-PROFIT CIVIC
2100 SW River Parkway, Portland 97201
warren@theintertwine.org |
www.theintertwine.org
Warren Jimenez.....(503) 445-0991

THE OUTLOOK/PAMPLIN MEDIA GROUP

NEWSPAPERS & PUBLICATIONS

1190 NE Division St., Gresham 97030

sbrown@theoutlookonline.com |www.theoutlookonline.com

Steve Brown.....(503) 665-2181

THE ROTARY CLUB OF GRESHAM

NON-PROFIT CIVIC

P O Box 3041, Gresham 97030

GAkers@ProActivePTS.com |www.greshamrotary.com

Glen Akers.....

THE SALVATION ARMY GRESHAM CORPS

CHILDREN & FAMILY NON-PROFIT

473 SE 194th Avenue, Portland 97233

Timothy.witcher@usw.SalvationArmy.org |gresham.salvationarmy.org

Timothy Witcher.....(503) 661-8972

THE TIDY SISTER

HOME CLEANING & SUPPLIES

Gresham 97080

thetidysister@gmail.com |www.thetidysister.com

Melissa Stiers.....(503) 666-2255

THE VILLAGE RETIREMENT CENTER

SENIOR LIVING & SERVICES

4501 W. Powell Blvd., Gresham 97030

help@villageretirementcenter.com |www.villageretirementcenter.org

Alexandra Marcus.....(503) 665-3137

**THERAPEUTIC ASSOCIATES -
GRESHAM PHYSICAL THERAPY**

HEALTHCARE - MEDICAL

283 NW Miller Avenue, Gresham 97030

jparr@taipt.com |www.therapeuticassociates.com/gresham

John Parr.....(503) 666-7644

**THERESA'S COUNTRY FEED &
PET WOOD VILLAGE**

ANIMAL SERVICES

22741 NE Park Lane, Wood Village 97060

tcfpwoodvillage@gmail.com |www.tcfpwoodvillage.com

Brie Connelly.....(503) 766-4570

TIGER LILY PHOTOGRAPHY

PHOTOGRAPHY & VIDEOGRAPHY

Gresham

admin@tigerlilyphotos.com |www.tigerlilyphotos.com

Deanna Greenburg.....(503) 481-5992

TOKOLA PROPERTIES

COMMERCIAL BUILDING SERVICES

1700 NW Civic Drive, Gresham 97030

dunti@tokolaproperties.com |www.tokolaproperties.com

Dwight Unti.....(503) 489-0685

TONE PROPER AV

BUSINESS & PROFESSIONAL SERVICES

117 NE Roberts Ave, Gresham 97030

nick@toneproperav.com | toneproperav.com

Nick Moon.....(888) 283-3293

TORTILLERIA Y TIENDA DE LEON'S

RESTAURANTS, FOOD, & BARS

16223 NE Glisan Street, Portland 97230

tortilleriad@gmail.com | www.salsaslocas.com

Lucy De Leon.....(503) 255-4356

**TRANSAMERICA FINANCIAL ADVISORS -
JIM HATHEWAY**

FINANCIAL SERVICES

7421 SW Bridgeport Road, Portland 97224

jhatheway@comcast.net |tfaconnects.com/jimhatheway

James Hatheway.....(503) 704-8617

Offering advanced urology services and state of the art technologies to patients in Gresham, Portland, and Northwest Oregon.

Our providers and staff encourage each patient to be an active participant in the treatment of his or her own urological condition. Patient education is central to this practice.



The Center
For Men's and
Women's Urology, LLC



Shammai
Rockove, MD



Melanie
Crites-Bachert, DO

503.492.6510www.centerforurology.com • 24076 SE Stark, Suite 310 - Gresham

Pamplin Digital Agency

We have more products to offer than just print.

- Pamplin Community Websites
- Pamplin E-blasts
- Targeted Digital Display
- Targeted E-mails
- Website Design
- SEO
- and much much more

Pamplin Digital Media**www.pamplindigitalmedia.com**

**TRANSAMERICA FINANCIAL ADVISORS -
RON POMPEL**

FINANCIAL SERVICES
1421 SW Bridgeport Rd, Portland 97224
r.pompel@comcast.net |
tfconnects.com/ronpompel
Ron Pompel(503) 349-5986

TRAVEL PORTLAND

TRAVEL SERVICES
1000 SW Broadway, Portland 97205
jmiller@travelportland.com |
www.travelportland.com
Jeff Miller.....(503) 275-9797

TROUTDALE AIRPORT STORAGE

MOVING & STORAGE
1027 NE Harlow Place, Troutdale 97060
manager@troutdalesstorage.com |
www.troutdalesstorage.com
Carrie Adrian.....(503) 492-4700

TSP TECHNOLOGY, INC.

COMPUTER SERVICES, INFORMATION TECHNOLOGY
16455 SE Division Street, Portland 97236
nic@tsptechnology.com |
www.tsptechnology.com
Nicolas Castaneda(503) 208-7430

**TSURU ISLAND -
GRESHAM JAPANESE GARDEN**

NON-PROFIT CIVIC
219 S Main Avenue, Gresham 97030
gresham.japanese.garden@gmail.com |
www.greshamjapanesegarden.com
Jim Card(503) 969-4386

TWO MEN & A TRUCK PORTLAND EAST

MOVING & STORAGE
7930 SW Nimbus , Beaverton 97008
laura.gazarian@twomen.com |
twomenportlandeast.com
Laura Gazarian(503) 894-9923

U.S. WORLD CLASS TAEKWONDO

SPORTS & RECREATION
39 NW 3rd Street, Gresham 97030
claire@kidslovetkd.com | www.kidslovetkd.com
Claire & Samuel Lider(503) 674-4800

UMPQUA BANK - GRESHAM STATION

BANKING & CREDIT UNIONS
1027 NW Norman Avenue, Gresham 97030
bridgittcalder@umpquabank.com |
www.umpquabank.com
Bridgitt Calder.....(503) 669-0812

UNITED FINANCE

FINANCIAL SERVICES
21931 SE Stark Street, Gresham 97030
gresham@unitedfinance.com |
unitedfinance.com
Raul Cruz.....(503) 661-5626

US BANK - GRESHAM

BANKING & CREDIT UNIONS
300 E Powell, Gresham 97030
breah.parrott@usbank.com | www.usbank.com
Breah Parrott.....(503) 661-4500

VALLEYSAPES

GARDEN & LANDSCAPING
14577 SE Anderson Rd., Damascus 97089
info@valleysapes.net |
www.valleysapesllc.com
Tony Stevens.....(503) 492-4736

VALUCENTRIC LLC

REAL ESTATE SERVICES
mborre@valucentric.com | www.valucentric.com
Michael Borre(971) 400-6113

VENVINO ART STUDIOS

ARTS, CULTURE & ENTERTAINMENT
13329 SE Misty Drive, Happy Valley 97086
info@venvinoartstudios.com |
www.venvinoartstudios.com
Janice Kiser.....(503) 342-8644

VILLAGE HEALTH CARE

HEALTHCARE - MEDICAL
3955 SE 182nd Avenue, Gresham 97030
admissions@villagehc.com | www.villagehc.com
Dianna Kretschmar(503) 665-0183

VISITING ANGELS

SENIOR LIVING & SERVICES
202 NE Kelly Avenue, Gresham 97030
monicacourtney@greshamangels.com |
www.visitingangels.com
Monica Courtney(503) 661-0600

VISUAL IMPRESSIONS PHOTOGRAPHY, LLC

PHOTOGRAPHY & VIDEOGRAPHY
3650 SE Powell Valley Rd., Gresham 97080
amanda@visualimpressions.org |
www.visualimpressions.org
Amanda Campy.....(503) 320-3076

WAFD BANK

BANKING & CREDIT UNIONS
1675 NE Burnside Road, Gresham 97030
gresham.office@wafd.com |
www.wafdbank.com
Devon Lawson(503) 491-8929

WALKER TRAVEL AND CRUISES

TRAVEL SERVICES
1005 N Main Avenue, Gresham 97030
doug@walkertravel.com | www.walkertravel.com
Doug Walker(503) 666-3700

WARNER PACIFIC UNIVERSITY

EDUCATION
2219 SE 68th Avenue, Portland 97215
bljohnson@warnerpacific.edu |
www.warnerpacific.edu
Brian L Johnson.....(503) 517-1220

WARREN ALLEN, LLP

LEGAL SERVICES
10535 NE Glisan St, Portland 97220
allen@warrenallen.com | www.warrenallen.com
Warner Allen(503) 255-8795

WASTE MANAGEMENT OF OREGON

PUBLIC UTILITIES
7227 NE 55th, Portland 97218
dkampfer@wm.com | www.wm.com
Dean Kampfer(503) 493-7831

WAYFM 96.3

RADIO, TV & BROADCAST STATIONS
1400 NE 136th Avenue, Vancouver 98684
mtedesco@wayfm.com | www.wayfm.com
Michael Tedesco(503) 210-9290

WELLS FARGO BANK - EAST GRESHAM

BANKING & CREDIT UNIONS
2266 NE Burnside Rd., Gresham 97080
celia.weaver@wellsfargo.com |
www.wellsfargo.com
Celia Weaver(503) 491-2620

**WEST COLUMBIA GORGE
CHAMBER OF COMMERCE**

CHAMBER OF COMMERCE
107 E Historic Columbia River Highway, Troutdale 97060
info@westcolumbiagorgechamber.com |
www.westcolumbiagorgechamber.com
Marcia Chiaudano(503) 669-7473

Warren Allen LLP

ATTORNEYS AT LAW

*Over Four Decades In East County,
Over Two Centuries of Experience*

Business Planning ♦ Real Estate ♦ Probate ♦ Personal Injury
Family Law & Divorce ♦ Litigation ♦ Landlord's Rights
Creditor's Rights ♦ Estate Planning ♦ Construction Law



850 NE 122nd Avenue, Portland, OR 97230
Phone: 503-255-8795 ♦ Fax: 503-255-8836
www.warrenallen.com

Jan Weston(503) 665-2166

Jayson Echternach(503) 256-9905

Anne Pacheco.....(503) 667-3832

Tanner Warren503-COATING

Patricia Gutierrez(503) 512-7910

Andrew McGough.....(503) 478-7300

Willard Burks(503) 663-7966

Matt Wand(503) 680-8180

Laurie Holycross.....(503) 667-7932

Tony Freeman(503) 866-4940

Zee Smart(503) 314-7433

[illegible]

GRESHAM'S MOST *preferred* BUSINESS LISTINGS *by Category*

ACCOUNTING & TAX SERVICES

ALEX ASCUENA, CPA
33 NW 3rd Street
Gresham, 97030-7201 (503) 666-7100
aacpa.tax

BUSINESS & ACCOUNTING SOLUTIONS, LLC
2870 NE Hogan Drive
Gresham, 97030 (503) 710-6213
www.baspxpro.com

DOWNING & CORZATT, LLC
5933 NE Win Silvers Drive
Portland, 97220 (503) 257-9611
www.dc-pdxcpa.com

GHIONI TAX AND ACCOUNTING SOLUTIONS, LLC
958 NE Kelly St.
Gresham, 97030 (503) 465-3720
ghionitax.com

GREAT SOLUTIONS, INC.
500 SE Butler Road
Gresham, 97080 (503) 807-6857
www.gsiaccounting.com

LANDMARK TAX & INVESTMENT SERVICES INC.
415 NE 4th Street
Gresham, 97030 (503) 491-1000
www.landmarktaxandinvestment.com

NORTHWEST ACCOUNTING PARTNERS
320 N Main Avenue
Gresham, 97030 (503) 328-9425
www.nwaccountingpartners.com

RIGHT WAY BOOKKEEPING
21324 SE Alder Street
Gresham, 97030 (503) 348-7798
www.rightwaybk.com

ADVERTISING - MARKETING & WEB SERVICES

AKROS MARKETING
24023 NE Shea Lane
Wood Village, 97060 (503) 799-3314
www.akrosmarketing.com

LEWIS CREATIVE
Gresham, 97030 (503) 912-0841
www.lewiscreative.net

MPG MARKETING & MAILING SERVICES
www.mpgmarketingandmailing.net (503) 231-7154

NW WEB SOLUTIONS
www.nwwsolutions.com (503) 421-4435

RESOLUTIONS
resolutions-inc.net (503) 665-9345

SATURN BARTER COMPANY
1800 A W 4th Plain Blvd.
Vancouver, 98661 (360) 787-4343
www.saturnbarter.com

THE BOLD ORANGE
406 NE 4th St., Suite 126
Gresham, 97030 (971) 256-8426
www.theboldorange.com

ADVERTISING - PROMOTIONAL PRODUCTS

KG SPECIALTIES
12570 NE Marx Street
Portland, 97230 (503) 669-8233
www.kgspecialties.com

SANDY RIVER MARKETING INC.
2208 NW Birdsall Avenue
Gresham, 97030 (503) 492-2348
www.sandyrivermarketing.com

ANIMAL SERVICES

DOGWOOD PET HOSPITAL
1440 E Powell Blvd.
Gresham, 97030 (503) 667-9457
www.dogwoodveterinariangresham.com

GRESHAM ANIMAL HOSPITAL
520 NW Division
Gresham, 97030 (503) 666-1600
www.greshamanimalhospital.com

THERESA'S COUNTRY FEED & PET WOOD VILLAGE
22741 NE Park Lane
Wood Village, 97060 (503) 766-4570
www.tcfpwoodvillage.com

APPLIANCES

RIEGELMANN'S APPLIANCE

301 E Powell Blvd.
Gresham, 97030 (503) 665-4158
www.riegelmanns.com

ARCHITECTS

AXIS DESIGN GROUP ARCHITECTURE & ENGINEERING, INC.
11104 SE Stark St
Portland, 97216 (503) 284-0988
www.axisdesigngroup.com

BLRB ARCHITECTS
621 SW Morrison Street
Portland, 97205 (503) 595-0270
www.blrb.com

ARTS, CULTURE & ENTERTAINMENT

CENTER FOR THE ARTS FOUNDATION
www.greshamcenterforthearts.org (503) 489-1157

CINEESCAPES
204 NE 2nd Street
Gresham, 97030 (503) 902-2194
www.cine-escapes.com

EASTSIDE THEATER CO.
3445 SE Hillyard Rd.
Gresham, 97080 (971) 231-5032
www.eastsidetheater.com

GRESHAM OUTDOOR PUBLIC ART (GOPA)
www.greshamoutdoorpublicart.com (503) 310-8565

PORTLAND COLUMBIA SYMPHONY
5830 NE Alameda
Portland, 97213 (503) 234-4077
pcsymphony.org

PORTLAND HIGHLAND GAMES ASSOCIATION
P O Box 25034
Portland, 97298 (503) 293-8501
www.phga.org

VENVINO ART STUDIOS
13329 SE Misty Drive
Happy Valley, 97086 (503) 342-8644
www.venvinoartstudios.com

ATTRACTIONS

MULTNOMAH FALLS LODGE
P O Box 367
Troutdale, 97060 (503) 695-2376
www.multnomahfallsloodge.com

AUTOMOTIVE

ALL ABOUT AUTOMOTIVE

139 NW 2nd Street
Gresham, 97030 (503) 465-2926
www.allaboutautomotive.com
(See ad on page 19)

FIX AUTO GRESHAM
935 SE 202nd
Portland, 97233 (503) 665-8191
www.fixauto.com/gresham

GRESHAM FORD
1999 E Powell Blvd.
Gresham, 97080 (503) 665-0101
www.greshamford.com
(See ad on page 28)

GRESHAM SUBARU
1925 E Powell
Gresham, 97030 (503) 661-1200
www.bigsubarustore.com

GRESHAM TOYOTA SCION
950 NE Hogan Drive
Gresham, 97030 (503) 667-1135
www.greshamtoyota.com

HONEST-1 AUTO CARE
1690 NE Division Street
Gresham, 97030 (503) 465-2725
www.honest1gresham.com

LES SCHWAB TIRE CENTERS
390 NE Burnside
Gresham, 97030 (503) 666-9496
www.lesschwab.com

ORIENT AUTO SERVICE, INC.
1550 SE Orient Drive
Gresham, 97080 (503) 667-3900
www.orientautoservice.com

PRECISION BODY & PAINT OF GRESHAM INC.
2515 NW Eleven Mile Ave
Gresham, 97030 (503) 667-8280
www.precisionfirst.com

SUBURBAN AUTO GROUP
36936 Highway 26
Sandy, 97055 (503) 668-5555
www.suburbanautogroup.com

WESTON BUICK GMC KIA

22555 SE Stark Street
Gresham, 97030 (503) 665-2166
www.buyweston.com
(See ad on inside back cover)

BAKERY

HOPE'S BAKE SHOP

455 NE Burnside Road
Gresham, 97030 (503) 936-7324
www.hopesbakeshop.com

SUGAR CUBED

101 N. Main Avenue
Gresham, 97030 (503) 512-7871
sugarcubedcakes.com

TANY'S BAKERY LLC

22605 NE Halsey St. Suite E
Fairview, 97024 (503) 666-6060
www.facebook.com/tanysbakeryoregon/

BANKING & CREDIT UNIONS

ADVANTIS CREDIT UNION

2229 NE Burnside Rd
Gresham, 97030 (503) 785-2528
www.advantiscu.org
(See ad on back cover)

BANK OF AMERICA

200 E Powell Blvd.
Gresham, 97030 (503) 665-3159
sbbankers.bankofamerica.com/pjohnson34/overview

CHASE

3090 NE Hogan
Gresham, 97030 (503) 618-1581

CLACKAMAS COUNTY BANK - GRESHAM

1101 NE Burnside Street
Gresham, 97030 (503) 665-9444
www.clackamascountybank.com

COLUMBIA BANK

473 NW Burnside Road
Gresham, 97030 (503) 618-0939
www.columbiabank.com

KEYBANK - GRESHAM

390 W Burnside Rd
Gresham, 97030 (503) 405-4325
www.key.com

ONPOINT COMMUNITY CREDIT UNION EAST GRESHAM FRED MEYER

2497 SE Burnside Rd. Ste. 101
Gresham, 97030 (503) 228-7077 ext. 6465
www.onpointcu.com
(See ad on page 32)

ONPOINT COMMUNITY CREDIT UNION GRESHAM

1700 NW Civic Dr Ste 100
Gresham, 97030 (503) 228-7077 ext. 5650
www.onpointcu.com
(See ad on page 32)

OREGONIANS CREDIT UNION

247 E Powell Blvd.
Gresham, 97030 (503) 239-5336
www.oregonianscu.com
(See ad on page 34)

RIVERMARK COMMUNITY CREDIT UNION

1058 NW Sieret Avenue
Gresham, 97030 (503) 626-6600
www.rivermarkcu.org

RIVERVIEW COMMUNITY BANK

225 NE Burnside Road
Gresham, 97030 (503) 912-5400
www.riverviewbank.com

UMPQUA BANK - GRESHAM STATION

1027 NW Norman Avenue
Gresham, 97030 (503) 669-0812
www.umpquabank.com

US BANK - GRESHAM

300 E Powell
Gresham, 97030 (503) 661-4500
www.usbank.com

WAFD BANK

1675 NE Burnside Road
Gresham, 97030 (503) 491-8929
www.wafdbank.com

WELLS FARGO BANK - EAST GRESHAM

2266 NE Burnside Rd.
Gresham, 97080 (503) 491-2620
www.wellsfargo.com

BREWERIES & WINERIES

BORING BREWING CO.

38250 Pioneer Blvd.
Sandy, 97055 (503) 427-8619
www.boringbrewing.com

MIGRATION BREWING

18188 NE Wilkes Road
Gresham, 97230 (971) 274-3770
www.migrationbrewing.com

BUSINESS & PROFESSIONAL SERVICES

ARROW SANITARY SERVICE

5455 NE 109th Ave
Portland, 97220 (503) 257-1331
arrowsanitaryservice.com

DSV AIR & SEA INC.

9830 NE Cascade PKWY, Suite 275
Portland, 97220 (971) 347-1561
dsv.com

EAST METRO ECONOMIC ALLIANCE

P O Box 422
Gresham, 97030 (503) 849-2318
www.eastmetro-alliance.org/

GREATER PORTLAND INC.

111 SW Columbia Street
Portland, 97201 (503) 445-8065
www.greaterportlandinc.com

MARS ON LIFE VO

417 E. Powell Blvd.
Gresham, 97030 (503) 260-4840
susannahmars.com

MT. HOOD COMMUNITY COLLEGE SMALL BUSINESS DEVELOPMENT CENTER

26000 SE Stark St.
Gresham, 97030 (503) 491-7658
www.mhccbizcenter.org

PAYCHEX

www.paychex.com (503) 890-3360

PAYROLL ON TIME, INC.

4410 SE Woodstock Blvd
Portland, 97206 (503) 756-0090
www.payrollontime.net

SAFE AIR NETWORK (SAN)

3190 NE Lancaster Drive
Salem, 97305 (503) 585-5582
safeairnetwork.com

SEND OUT CARDS - GAIL FULLER

Gresham, 97030 (503) 481-3261
www.sendoutcards.com/177137

SMART LABS NOW

12003 NE Ainsworth Circle
Portland, 97220 (503) 477-7748
www.SmartLabsNow.com
(See ad on page 36)

TONE PROPER AV

117 NE Roberts Ave
Gresham, 97030 (888) 283-3293
toneproperav.com

CARPET & FLOORING

CONTRACT FURNISHINGS MART

3108 NE 181st Avenue
Gresham, 97230 (503) 328-7260
www.cfmfloors.com

CROWN CARPETS

21655 SE Stark Street
Gresham, 97030 (503) 665-4162
www.crowncarpets.com

WISE COATINGS LLC

29241 SE Kerslake Rd.
Troutdale, 97060 503-COATING
wisecoatings.com

CATERING

BUSY BEE CATERING LLC

68951 E Fairway Avenue
Welches, 97067 (503) 622-6743
www.busybeecatering.com

CHRIS CAKES NORTHWEST, LLC

www.chriscakesnorthwest.com (503) 374-1911

CHAMBER OF COMMERCE

GRESHAM AREA CHAMBER OF COMMERCE

1005 N Main Avenue
Gresham, 97030 (503) 665-1131
www.greshamchamber.org

HISPANIC METROPOLITAN CHAMBER

333 SW 5th Avenue
Portland, 97204 (503) 222-0280
www.hmccoregon.com

WEST COLUMBIA GORGE CHAMBER OF COMMERCE

107 E Historic Columbia River Highway
Troutdale, 97060 (503) 669-7473
www.westcolumbiagorgechamber.com

CHILDREN & FAMILY NON-PROFIT**AMBLESIDE MEALS ON WHEELS PEOPLE**

600 NE 8th St.
Gresham, 97030 (503) 953-8201
www.mowp.org

APPLE OF HIS EYE CHARITY

11 NE 10th Dr.
Gresham, 97030 (503) 665-6655
www.appleofhiseyecharity.org

BIRCH COMMUNITY SERVICES, INC.

17780 NE San Rafael
Portland, 97230 (503) 251-5431
www.birchcommunityservices.org

EASTCO DIVERSIFIED SERVICES

215 SW Wallula Avenue
Gresham, 97080 (503) 667-0613
www.eastcods.org

EL PROGRAMA HISPANO CATOLICO

333 SE 223rd Ave.
Gresham, 97030 (503) 669-8350
www.elprograma.org/

FOOD FOR FAMILIES, INC.

3505 SE 182nd Ave
Gresham, 97030 (971) 220-6679
food4families.net

FRIENDS OF THE CHILDREN - PORTLAND

424 NE 172nd Avenue
Portland, 97230 (503) 281-6633
www.friendspdx.org

HUMAN SOLUTIONS

10550 NE Halsey St.
Portland, 97220 (503) 548-0200
www.humansolutions.org

MY FATHER'S HOUSE, A COMMUNITY SHELTER

PO Box 1147
Gresham, 97030 (503) 492-3046
www.familyshelter.org

REAP INC.

10808 NE Halsey
Portland, 97220 (503) 688-2784
www.reapusa.org

SNOWCAP COMMUNITY CHARITIES

17788 SE Pine
Gresham, 97233 (503) 405-4293
www.snowcap.org

THE SALVATION ARMY GRESHAM CORPS

473 SE 194th Avenue
Portland, 97233 (503) 661-8972
gresham.salvationarmy.org/

YMCA CAMP COLLINS

3001 SE Oxbow Parkway
Gresham, 97080 (503) 663-7966
www.ymcacw.org

ZAREPHATH KITCHEN & PANTRY

59 NW Ava, Suites A&B
Gresham, 97030 (503) 667-7932
www.feedeastcounty.org

CHILDREN NON-PROFIT**FAMILY OF FRIENDS MENTORING**

1333 NW Eastman Parkway
Gresham, 97030 (503) 618-2397
www.family-of-friends.org

GRESHAM-BARLOW EDUCATION FOUNDATION

P O Box 3406
Gresham, 97030 (503) 766-0008
www.gbefkids.org

CHURCHES**EAST HILL CHURCH**

701 N Main Avenue
Gresham, 97030 (503) 661-4444
www.easthill.org

MOUNTAINVIEW CHRISTIAN CHURCH

1890 NE Cleveland Ave.
Gresham, 97030 (503) 492-1200
mvcclive.com
(See ad on page 52)

PATHWAY CHURCH

3848 NE Division Street
Gresham, 97030 (503) 667-1515
www.pathwaychurch.net

SMITH MEMORIAL PRESBYTERIAN CHURCH

2420 NE Fairview Avenue
Fairview, 97024 (503) 667-6800
www.smithmemorialpres.org

CITY & REGIONAL GOVERNMENT**CITY OF FAIRVIEW - CITY HALL**

1300 NE Village Street
Fairview, 97024 (503) 665-7929
www.fairvieworegon.gov
(See ad on page 22)

CITY OF GRESHAM - CITY HALL

1333 NW Eastman Parkway
Gresham, 97030 (503) 618-3000
greshamoregon.gov
(See ad on page 23)

CITY OF GRESHAM POLICE DEPARTMENT

1333 NW Eastman Parkway
Gresham, 97030 (503) 618-2318
www.greshamoregon.gov

CITY OF TROUTDALE - CITY HALL

219 E Historic Columbia River Hwy
Troutdale, 97060 (503) 674-7224
www.troutdaleoregon.gov

HOME FORWARD

135 SW Ash Street
Portland, 97204 (503) 802-8423
www.homeforward.org

METRO

600 NE Grand Avenue
Portland, 97232 (503) 797-1547
www.oregonmetro.gov

MULTNOMAH COUNTY SHERIFF'S OFFICE

501 SE Hawthorne
Portland, 97214 (503) 988-4300
www.mcso.us

PORT OF PORTLAND

7200 NE Airport Way
Portland, 97218 (503) 415-6000
www2.portofportland.com

COFFEE**BLACK ROCK COFFEE BAR**

24699 SE Stark Street
Troutdale, 97060 (503) 381-0049
br.coffee

CAFE DELIRIUM

308 N Main Avenue
Gresham, 97030 (503) 666-2002
www.cafedelirium.com

DUTCH BROS COFFEE

328 NW Burnside Rd.
Gresham, 97030 (541) 955-4700
www.dutchbros.com

TANY'S COFFEE SHOP LLC

3030 NE Hogan Dr Ste C
Gresham, 97030 (503) 912-3827
www.facebook.com/Tanys.Coffeeshop

COMMERCIAL BUILDING SERVICES**BREMIK CONSTRUCTION**

1026 SE Stark Street
Portland, 97214 (503) 688-1000
www.bremik.com

CANTEL SWEEPING

1709 NW Eleven Mile Avenue
Gresham, 97030 (503) 661-4337
www.cantelsweeping.com

CARBON TECHNOLOGY, INC.

20142 SE Bornstedt Rd.
Sandy, 97055 (503) 668-8166
www.carbontechnologyinc.com

CERTAPRO PAINTERS OF PORTLAND

2410 SE 121st Avenue
Portland, 97216 (503) 894-9379
certapro.com/portland/

FORTIS CONSTRUCTION, INC.

1705 SW Taylor Street
Portland, 97205 (503) 459-4477
www.fortisconstruction.com

MCDONALD & WETLE INC.

2020 NE 194th Avenue
Portland, 97230 (503) 667-0175
www.mcdonaldwetle.com

MCKINSTRY

16790 NE Mason Street
Portland, 97230 (503) 331-0234
www.mckinstry.com

PDG CONSTRUCTION SERVICES, INC.

27600 SW 95th Avenue
Wilsonville, 97070 (503) 674-3200
pdginc.com/our-team/

RHINO INDUSTRIAL, INC. (503) 260-8780

TOKOLA PROPERTIES
1700 NW Civic Drive
Gresham, 97030 (503) 489-0685
www.tokolaproperties.com

COMMUNICATION

AT&T INC. - GRESHAM
533 NW Division St.
Gresham, 97030 (541) 639-1639
www.att.com

COMCAST
www.comcast.com (971) 371-4323

OOMA BUSINESS, INC.
10260 SW Greenburg Road
Portland, 97223 (503) 743-6464
www.ooma.com

COMPUTER SERVICES, INFORMATION

IPARTS AND PHONE REPAIRS
1925 NE Division Street
Gresham, 97030 (503) 908-2727
www.ipartsrepair.com

KELLEY CONNECT PORTLAND
7204 SW Durham Road
Tigard, 97224 (503) 643-6048
kelleyconnect.com

PINNACLE COMPUTER SOLUTIONS, LLC
www.pinnaclecomputersolutions.com (503) 318-1552

RP COMPUTING
P O Box 1082
Gresham, 97030 (503) 708-3859
www.rpcomputing.biz

SOLUTIONS IT
123 E. Powell Blvd. #102
Gresham, 97030 (541) 370-2804
www.solutionsit.net

TSP TECHNOLOGY, INC.
16455 SE Division Street
Portland, 97236 (503) 208-7430
www.tsptechnology.com

DENTAL, OPTICAL, HEARING

BEDONT ORTHODONTICS
1042 NW Norman Avenue
Gresham, 97030 (503) 665-1115
www.bedontortho.com

EASTSIDE DENTAL CLINIC
1540 SW 257th Drive
Troutdale, 97060 (503) 665-2177
www.eastsidedentalclinic.com
(See ad on page 24)

GRESHAM MODERN DENTISTRY
387 NE 223rd Avenue
Gresham, 97030 (503) 491-5450
www.greshammoderndentistry.com

WILLOUGHBY HEARING
350 NW Eastman Parkway
Gresham, 97030 (503) 667-3832
www.newsoundhearing.com/locations/gresham/

DISASTER RESTORATION

PUROCLEAN OF HAPPY VALLEY
Happy Valley, 97086 (503) 894-6100
puroclean.com/phv-or

SERVPRO OF GRESHAM
21640 SE Stark Street
Gresham, 97030 (503) 665-7752
www.servprogresham.com

DISTRIBUTING, MANUFACTURING & INDUSTRIAL

AMAZON
1250 NW Swigert Way
Troutdale, 97060
www.amazon.com/oregonhourlyjobs

DENTON PLASTICS
18811 NE San Rafael
Portland, 97230 (503) 257-9945
www.dentonplastics.com

FEDEX GROUND
2460 NW Sundial Road
Troutdale, 97060 800-GoFedEx
www.fedex.com

LINEAGE LOGISTICS
19450 NE San Rafael Street
Portland, 97230 (503) 489-2995
www.lineagelogistics.com

MICROCHIP TECHNOLOGY INC.
21015 SE Stark Street
Gresham, 97030 (503) 669-5500
www.microchip.com

MOEN MACHINERY
268 NE Hogan Rd.
Gresham, 97030 (503) 666-9159
www.moenmachinery.com

ON SEMICONDUCTOR
23400 NE Glisan Street
Gresham, 97030 (503) 618-4344
www.onsemi.com

OWENS CORNING GRESHAM FOAM PLANT
18456 NE Wilkes Road
Portland, 97230 (503) 405-1011
www.owenscorning.com

PELLA VINYL - PORTLAND OPERATIONS
18600 NE Wilkes Road
Portland, 97230 (503) 405-9075
www.pella.com

THE BOEING COMPANY
19000 NE Sandy Blvd
Portland, 97230 (206) 655-1131
www.boeing.com

EDUCATION

CENTENNIAL SCHOOL DISTRICT
18135 SE Brooklyn Street
Portland, 97236 (503) 760-7990
www.csd28j.org

CENTER FOR ADVANCED LEARNING
1484 NW Civic Drive
Gresham, 97030 (503) 667-4978
www.calcharter.org

GRESHAM - BARLOW SCHOOL DISTRICT

1331 NW Eastman Parkway
Gresham, 97030 (503) 261-4550
www.gresham.k12.or.us
(See ad on page 27)

LEWIS & CLARK MONTESSORI CHARTER SCHOOL
15600 SE 232nd Drive
Damascus, 97089 (503) 427-0803
www.lcmcs.org

METRO EAST COMMUNITY MEDIA

829 NE 8th St
Gresham, 97030 (503) 667-8848
www.metroeast.org
(See ad on page 31)

METRO EAST WEB ACADEMY
50 NW 5th Street
Gresham, 97030 (503) 258-4790
www.mewebacademy.org

MT. HOOD COMMUNITY COLLEGE / GRESHAM CAMPUS

26000 SE Stark Street
Gresham, 97030 (503) 491-7212
www.mhcc.edu
(See ad on inside front cover)

MULTNOMAH LEARNING ACADEMY - K-8 PUBLIC CHARTER SCHOOL
22565 NE Halsey Street
Fairview, 97024 (503) 405-7868
www.mla.k12.or.us

OREGON TRAIL ACADEMY
36225 SE Proctor Road
Boring, 97009 (503) 668-5521
oregontrailschools.com/ota

POIC + RAHS
2208 SE 182nd Avenue
Portland, 97233 (503) 797-7226
www.portlandoic.org

REYNOLDS SCHOOL DISTRICT
1204 NE 201st Avenue
Fairview, 97024 (503) 661-7200
www.reynolds.k12.or.us

WARNER PACIFIC UNIVERSITY
2219 SE 68th Avenue
Portland, 97215 (503) 517-1220
www.warnerpacific.edu

EMPLOYMENT SERVICES

ALSO - ADVOCATES FOR LIFE SKILLS AND OPPORTUNITY

10541 SE Cherry Blossom Drive
Portland, 97216 (503) 489-6565
www.alsoweb.org
(See ad on page 20)

BBSI - PORTLAND
2 Centerpointe Drive
Lake Oswego, 97035 (503) 819-7540
www.bbsi.com

EXCEED ENTERPRISES INC
5285 SE Mallard Way
Milwaukie, 97222 (503) 652-9036
www.exceedpdx.com

EXPRESS EMPLOYMENT PROFESSIONALS

120 NW Burnside
Gresham, 97030 (503) 492-3200
www.expresspros.com/greshamor

HIRE NW

248 NE 219th Ave
Gresham, 97030 (971) 401-1051
hirenw.com

SPRINGDALE JOB CORPS

31224 E Historic Columbia River Highway
Troutdale, 97060 (503) 695-2245
www.springdalejobcorps.gov

WORKSYSTEMS, INC.

1618 SW First Avenue
Portland, 97201 (503) 478-7300
www.worksystems.org

ENVIRONMENTAL SERVICES**JACOBS ENGINEERING GROUP, INC.**

20015 NE Sandy Blvd.
Portland, 97230 (503) 618-3450
www.Jacobs.com

EVENT & WEDDING SERVICES**CLEAR CREEK EVENTS**

376 NE 219th Avenue
Gresham, 97030 (971) 808-7201
www.clearcreek-events.com

SRC COMMUNITY CONSULTING, LLC

Gresham, 97030 (503) 750-3785

EVENT FACILITIES**CLUB PAESANO**

3800 W. Powell Loop
Gresham, 97030 (503) 577-8471
clubpaesano.org

ROCKWOOD CDC & SUNRISE CENTER

18901 E. Burnside
Gresham, 97233 (503) 847-9163
www.rockwoodcdc.org

FINANCIAL SERVICES**AMERICAN FAMILY ESTATE PRESERVATION, INC. (AFEP)**

Gresham, 97030 (971) 409-1898
www.mylivingtrust.org

BRENDAN FLOHR W/MERRILL LYNCH WEALTH MANAGEMENT

1211 SW 5th Ave
Portland, 97204 (971) 258-7633
www.merrill.com/merrill-lynch-wealth-management.html

COLUMBIA COLLECTION SERVICE

10888 SE Main Street
Milwaukie, 97222 (800) 807-3476
www.columbiacollection.com

EDWARD JONES - ALINA ROCHA JOHNSON

701 NE Division St.
Gresham, 97030 (503) 328-8688
www.edwardjones.com/alina-rochajohnson

**EDWARD JONES/
CHRISTINA J. PRICE**

The Crossings at Gresham Station
Gresham, 97030 (503) 665-2193
www.edwardjones.com

**EDWARD JONES/JARED TJADEN,
FINANCIAL ADVISOR**

38750 Proctor Blvd.
Sandy, 97055 (503) 668-1070
www.edwardjones.com/jared-tjaden

EDWARD JONES/KIMBERLEY LANPHAR

The Crossings at Gresham Station
Gresham, 97030 (503) 665-2193
www.edwardjones.com

**FINANCE OF AMERICA MORTGAGE -
CLACKAMAS BRANCH**

12550 SE 93rd Avenue
Clackamas, 97015 (503) 496-5702
www.foamortgage.com/tstinson

NAVIGATE FINANCIAL

www.navigatefinancialnw.com (360) 402-3200

**SOCIAL SECURITY AND
FINANCIAL STRATEGIES SEMINARS**

9955 SE Washington
Portland, 97216 (503) 257-6969
vonborstel.com

TAX MINIMIZERS OF OREGON INC.

23345 SE Stark Street
Gresham, 97030 (503) 665-1040
www.taxminimizers.com

THE COOLEY GROUP - COUNTRY FINANCIAL

1549 NE Market Dr.
Fairview, 97024 (503) 676-1021
www.representatives.countryfinancial.com/luke.cooley

TRANSAMERICA FINANCIAL ADVISORS - JIM

HATHEWAY
7421 SW Bridgeport Road
Portland, 97224 (503) 704-8617
tfaconnects.com/jimhatheway/

**TRANSAMERICA FINANCIAL ADVISORS - RON
POMPEL**

7421 SW Bridgeport Rd
Portland, 97224 (503) 349-5986
tfaconnects.com/ronpompel

UNITED FINANCE

21931 SE Stark Street
Gresham, 97030 (503) 661-5626
unitedfinance.com

FITNESS**CASCADE ATHLETIC CLUB**

19201 SE Division Street
Gresham, 97030 (503) 665-4142
cascadeac.com/

ELEMENTS HEALTH CLUB - GRESHAM

2456 E Powell Blvd
Gresham, 97030 (503) 328-9777
elementshealthclubs.com

SNAP FITNESS

400 NW Eastman Parkway
Gresham, 97030 (971) 293-3422
www.snapfitness.com

FUNERAL SERVICES**GRESHAM MEMORIAL CHAPEL & EVENING EVENTS**

257 SE Roberts
Gresham, 97080 (503) 618-8176
www.greshamfuneral.com

GARDEN & LANDSCAPING**A-1 LAWN & GROUNDS MAINTENANCE INC.**

1123 SE 144th
Portland, 97233 (503) 254-9458

AL'S GARDEN CENTER

7505 SE Hogan Road
Gresham, 97080 (503) 491-0771
www.als-gardencenter.com

DRAKE'S 7 DEE'S NURSERY & LANDSCAPING

5645 SW Scholls Ferry Road
Portland, 97225 (503) 256-2223
www.drakes7dees.com

GOLDEN EAGLE HARDSCAPES LLC

Gresham, 97030 (503) 975-7083
www.goldeneaglehardscapes.com

PARK'S NURSERY

2100 SE 282nd
Gresham, 97080 (503) 663-3715
www.parksnursery.com

VALLEYSAPES

14577 SE Anderson Rd.
Damascus, 97089 (503) 492-4736
www.valleyscapesllc.com

GASOLINE & PROPANE**LEATHERS FUELS**

255 Depot Street
Fairview, 97024 (503) 661-1244

HAIR & BEAUTY**ALTER EGO SALON**

50 NW 2nd Street
Gresham, 97030 (503) 465-8801
www.alterego-salon.com

HEALTHCARE - ALTERNATIVE**ADVANCED CARE CHIROPRACTIC**

837 E Powell Blvd.
Gresham, 97030 (503) 669-9495
www.advancedcarechiro.com

BENCHMARK PHYSICAL THERAPY - GRESHAM

283 NE 223rd Ave.
Gresham, 97030 (503) 912-1192
www.benchmarkpt.com

DR. MARLENA KENNEDY, ND

500 NW 20th St. Suite 101
Gresham, 97030 (503) 489-5917
www.kennedynaturalmedicine.com

**GRESHAM FAMILY
CHIROPRACTIC**

575 NE 2nd Street
Gresham, 97030 (503) 667-6744
www.greshamchiropractor.com
(See ad on page 25)

HEALING TREASURES MASSAGE LLC

1217 NE Burnside
Gresham, 97030 (503) 320-1650
HealingTreasuresMassageTherapy.com

HOOD VIEW CHIROPRACTIC

1550 NW Eastman Parkway
Gresham, 97030 (503) 669-1966
www.hoodviewchiro.com

INSPIRE LIFE CHIROPRACTIC
13035 SE 84th Ave.
Clackamas, 97015
inspirelifepdx.com (971) 351-0808

JOHNSON CHIROPRACTIC CLINIC
417 E. Powell Blvd.
Gresham, 97030 (503) 665-2517
www.drjohnsonchiroclinic.com

HEALTHCARE - MEDICAL

ADVENTIST HEALTH PORTLAND

10123 SE Market Street
Portland, 97216 (503) 257-2500
www.adventisthealth.org/portland
(See ad on page 1)

AMERICAN MEDICAL RESPONSE NORTHWEST

One SE 2nd Avenue
Portland, 97214 (503) 736-3428
www.amr.net/home/portland
(See ad on page 20)

ARCADIA SENIOR LIVING
13031 SE Foster Rd.
Portland, 97236 (503) 206-8930
www.arcadiaretirement.com

ARCPPOINT LABS OF PORTLAND EAST
2010 SE 182nd Ave.
Portland, 97233 (503) 334-0100
www.arcpointlabs.com/portland-east/

ARMWORKS HAND THERAPY
24076 SE Stark Street
Gresham, 97030 (503) 491-1666
www.armworks.net

GOOD NEWS COMMUNITY HEALTH CENTER
18000 SE Stark Street
Portland, 97233 (503) 489-0567
www.goodnewschc.org

HEART OF HOSPICE - GRESHAM
1042 NW Norman Ave.
Gresham, 97030 (503) 925-3029
inspiringhospice.com

KAISER PERMANENTE
19500 SE Stark Street
Portland, 97233 (503) 813-2000
www.kp.org

LEGACY MOUNT HOOD MEDICAL CENTER
24800 SE Stark Street
Gresham, 97030 (503) 674-1122
www.legacyhealth.org

MTN. VIEW FAMILY PRACTICE, PC
24900 SE Stark Street
Gresham, 97030 (503) 665-1010
www.mtnviewfamilypractice.com
(See ad on page 52)

PEDIATRIC ASSOCIATES OF GRESHAM
2150 NE Division Street
Gresham, 97030 (503) 661-4200
www.greshampediatrics.com

THE CENTER FOR MEN'S & WOMEN'S UROLOGY

24076 SE Stark Street
Gresham, 97030 (503) 492-6510
www.centerforurology.com
(See ad on page 38)

THERAPEUTIC ASSOCIATES - GRESHAM PHYSICAL THERAPY
283 NW Miller Avenue
Gresham, 97030 (503) 666-7644
www.therapeuticassociates.com/gresham

VILLAGE HEALTH CARE
3955 SE 182nd Avenue
Gresham, 97030 (503) 665-0183
www.villagehc.com

HEATING & COOLING

CLAWSON HEATING & AIR CONDITIONING INC.
143 NE Elliott Ave.
Gresham, 97030 (503) 618-9646
www.clawsonheating.com

HONKE HEATING & AIR CONDITIONING INC.

840 NE Cleveland Avenue
Gresham, 97030 (503) 666-3725
www.honkeheating.com
(See ad on page 29)

SUN GLOW INC. HEATING, AIR CONDITIONING & REFRIGERATION
2428 SE 105th Avenue
Portland, 97216 (503) 253-7789
www.sunglowinc.com

WILLARD POWER VAC
15620 NE Glisan St.
Portland, 97230 (503) 256-9905
www.willardductcleaning.com

HOME CLEANING & SUPPLIES

NORWEX - KATHY HILL
www.kathyh.norwex.biz (503) 680-1356

THE TIDY SISTER
Gresham, 97080 (503) 666-2255
www.thetidysister.com

HOME IMPROVEMENT BUILDING SERVICES

AFFORDABLE HOME REMODELING
Gresham, 97030 (503) 489-2130
newwindowportland.com

CLEARLY AMAZING
15717 SW 74th Ave
Tigard, 97224 (503) 255-2532
www.clearlyamazing.com

GRESHAM GLASS, INC.
250 NE Hogan Drive
Gresham, 97030 (503) 667-8282
www.greshamglass.com

HOME BUILDERS ASSOCIATION OF METROPOLITAN PORTLAND
15555 Bangy Rd.
Lake Oswego, 97035 (503) 684-1880
www.hbapdx.org/

HOMEMASTERS PORTLAND EAST
P O Box 879
Boring, 97009 (503) 328-9400
portlandeast.homemasters.com

LENNY MARTIN PAINTING LLC
lennymartinpainting.com (503) 888-8020

MCCORD CONSTRUCTION, LLC
735 SE Mt. Hood Hwy
Gresham, 97080 (503) 348-2366
mccordconstructionllc.com

MT. HOOD GLASS
530 E Powell Blvd.
Gresham, 97030 (503) 667-0290
mthoodglass.com

RELIABLE FENCE & CONSTRUCTION
2105 SE 190th
Portland, 97233 (503) 669-8148
www.reliablefencecompany.com

SAWTOOTH ROOFING COMPANY
5230 NE 109th Avenue
Portland, 97220 (503) 258-8017
www.sawtoothroofing.com/

INDIVIDUAL & RETIRED

BETTY CHISUM (503) 661-5417

CAROLYN AEGERTER (503) 753-2423

SCOTT THOMAS
Portland, 97230 (971) 409-5582

CHUCK THOMSEN, THOMSEN ORCHARDS, INC.
1595 Eastside Road
Hood River, 97031 (541) 490-4641

FRED WALLACE (503) 208-1834
JOAN ALBERTSON (503) 666-5723

LORI STAHLMAN (503) 484-8385

ROBERT MCDONALD (503) 709-5852

INSURANCE SERVICES

ALLSTATE - FOX INSURANCE SERVICES
21721 SE Stark Street
Gresham, 97030 (503) 665-5125
www.allstate.com/justinfox

AMANDA ELIZABETH KIMBER AGENCY
135 NW 1st St
Gresham, 97030 (503) 665-3111
www.insurancebyamanda.com

AMERICAN FAMILY INSURANCE BARCLAY & ASSOCIATES, INC.
1217 NE Burnside Road
Gresham, 97030 (503) 491-9441
www.tbarclay.com

CCB INSURANCE SERVICES LLC

38975 Proctor Blvd.
Sandy, 97055 (503) 668-2524
www.ccbinsuranceservices.com

HEALTHBENEFITS411
www.healthbenefits411.com (503) 891-5793
(See ad on page 52)

INSURANCE SOLUTIONS NW, INC.

www.insurancesolutionsnw.com (503) 789-7217

KENWAY BENEFITS GROUP

2870 NE Hogan Drive
Gresham, 97030 (503) 349-3599
www.kenwaybenefitsgroup.com

LORI STEGMANN INSURANCE AGENCY, INC - FARMERS INSURANCE GROUP

202 SE 181st Avenue
Portland, 97233 (503) 667-7971
www.farmersagent.com/lstegmann

MARK NGUYEN - STATE FARM AGENT

14146 SE Stark Street
Portland, 97233 (503) 253-2110
www.marknguyeninsurance.com

MT. HOOD INSURANCE

21707 SE Stark St.
Gresham, 97030 (503) 808-1111
www.MtHoodInsurance.com

NEW YORK LIFE - WILLIAM AMSDEN

10260 SW Greenburg Road
Portland, 97223 (503) 206-2095
www.newyorklife.com/agent/wamsden

NORTHWEST BENEFIT STRATEGIES LLC

www.northwestbenefitstrategies.com (503) 925-5955

OREGON INSURANCE AGENCY

55 E. Powell Blvd.
Gresham, 97030 (503) 665-2649
www.oregoninsurance.net/

SPENCER LUND AGENCY

21901 NE Halsey
Fairview, 97024 (971) 231-4031
www.farmersagent.com/slund

STATE FARM - ROB HENDRICKSON AGENCY

2951 NW Division St.
Gresham, 97030 (503) 661-5205
www.mypdxagency.com

LEGAL SERVICES**GRESHAM FAMILY & BANKRUPTCY LAW**

www.greshamfamilylaw.com (503) 492-4229

GRESHAM INJURY LAW CENTER

424 NE Kelly Avenue
Gresham, 97030 (503) 492-1100
www.greshaminjurylaw.com

LEGALSHIELD - MICHAEL OLEARY

www.olearym.legalshieldassociate.com (503) 998-5868

WARREN ALLEN, LLP

10535 NE Glisan St
Portland, 97220 (503) 255-8795
www.warrenallen.com
(See ad on page 39)

LOCKSMITHS**GRESHAM LOCKSMITH INC.**

21755 SE Stark Street
Gresham, 97030 (503) 666-4138
www.greshamlocksmith.com

LODGING**BEST WESTERN SANDY INN**

37465 Highway 26
Sandy, 97055 (503) 668-7100
www.mthoodbestwestern.com

COMFORT INN COLUMBIA GORGE GATEWAY

1000 NW Graham Road
Troutdale, 97060 (503) 492-2900
www.citroutdale.com

COURTYARD BY MARRIOTT PORTLAND EAST

2811 NE 181st Ave.
Portland, 97230 (503) 665-2811
www.marriott.com/hotels/travel/pdxce-courtyard-portland-east/

HAMPTON INN

3039 NE 181st Avenue
Portland, 97230 (503) 669-7000
www.portlandgresham.hamptoninn.com

MOTEL 6

1572 NE Burnside Road
Gresham, 97030 (503) 666-9545
www.motel6.com/en/motels.or.gresham.8735.html

MY PLACE HOTEL PORTLAND EAST

2384 NE 178th Ave.
Portland, 97230 (503) 807-4427
www.myplacehotels.com/my-place-hotel-portland-east-or?chebs=googlebl-portland-east

QUALITY INN

2752 NE Hogan Drive
Gresham, 97030 (503) 907-1777
www.choicehotels.com/oregon/gresham/quality-inn-hotels/or239?source=gyxt

SUPER 8 MOTEL

121 NE 181st Avenue
Portland, 97230 (503) 661-5100
www.super8.com

MORTGAGE AND LENDING SERVICES**BANNER BANK - HOME LOANS**

9980 SE 82nd Ave.
Happy Valley, 97086 (503) 670-2202
bannerbank.mymortgage-online.com/LoanOfficerLMariani.html
(See ad on page 21)

MORTGAGE EXPRESS, NMLS-62738 & NMLS-205436

9200 SE Sunnybrook Blvd.
Clackamas, 97015 (503) 329-5622
teamjensen.mtgxps.com

NORTHWEST REVERSE MORTGAGE

10121 SE Sunnyside Rd
Clackamas, 97015 (503) 427-1667
www.nwreverse.com

PACIFIC RESIDENTIAL MORTGAGE

9200 SE Sunnybrook Blvd
Clackamas, 97015 (503) 496-0413
www.pacresmortgage.com

MOVING & STORAGE**COLLEGE HUNKS HAULING JUNK HAPPY VALLEY**

402 Beavercreek Rd.
Oregon City, 97045 (503) 386-0332
www.collegehunkshaulingjunk.com

TROUTDALE AIRPORT STORAGE

1027 NE Harlow Place
Troutdale, 97060 (503) 492-4700
www.troutdalestorage.com

TWO MEN & A TRUCK PORTLAND EAST

7930 SW Nimbus
Beaverton, 97008 (503) 894-9923
twomenportlandeast.com

NEWSPAPERS & PUBLICATIONS**HOODVIEW NEWS**

P O Box 174
Sandy, 97055 (503) 475-4905
www.hoodviewnews.com

THE OUTLOOK / PAMPLIN MEDIA GROUP

1190 NE Division St.
Gresham, 97218 (503) 665-2181
www.theoutlookonline.com
(See ad on page 38)

NON-PROFIT CIVIC**AMERICAN RED CROSS**

3131 N. Vancouver Ave.
Portland, 97227 (503) 528-5941
redcrossblood.org

BETTER BUSINESS BUREAU

www.bbb.org/northwest (503) 833-2301

COLUMBIA CORRIDOR ASSOCIATION

6015 NE 80th Avenue
Portland, 97218 (503) 287-8686
www.columbiacorridor.org

COLUMBIA SLOUGH WATERSHED COUNCIL

7040 NE 47th Ave
Portland, 97218 (503) 281-1132
www.columbiaslough.org

GATEWAY GRESHAM ELKS LODGE #1805

3330 NE Division Street
Gresham, 97030 (623) 693-2851
www.elks.org/ldoges/ContactUs.cfm?LodgeNumber=1805

GRESHAM BREAKFAST LIONS CLUB

P O Box 1613
Gresham, 97030 (503) 358-1313
www.e-clubhouse.org/sites/greshambreakfast/

GRESHAM HABITAT FOR HUMANITY RESTORE

610 NE 181st Avenue
Portland, 97230 (503) 575-7336
www.pdxrestore.org

GRESHAM HISTORICAL SOCIETY & MUSEUM

410 N Main Avenue
Gresham, 97030 (503) 661-0347
www.greshamhistorical.org/

GRESHAM TOASTMASTERS

Gresham, 97030 (503) 489-9265
783.toastmastersclubs.org/

GUIDE DOGS FOR THE BLIND

32901 SE Kelso Road
Boring, 97009 (503) 668-2100
www.guidedogs.com

HISTORIC DOWNTOWN GRESHAM BUSINESS ASSOC.

historicdowntowngresham.org

HULL FOUNDATION AND LEARNING CENTER, INC.

43233 SE Oral Hull Road
Sandy, 97055 (503) 668-6195
oralhull.org/

JOHNSON CREEK WATERSHED COUNCIL

4033 SE Woodstock Blvd
Portland, 97202 (503) 652-7477
www.jcwc.org

MERCY CORPS NORTHWEST

43 SW Naito Pkwy
Portland, 97204 (503) 896-5070
www.mercycorpsnw.org/

PINNACLE TECHNOLOGIES FOR NON-PROFITS

4233 SE 182nd Ave
Gresham, 97030 (503) 318-1552
pinnacletechfnp.org

SECOND HOME OF ECUMENICAL MINISTRIES OF OREGON

0245 SW Bancroft St.
Portland, 97239 (503) 221-1054
emoregon.org/second-home

SOROPTIMIST INTERNATIONAL OF GRESHAM

P O Box 802
Gresham, 97030 (971) 801-0209
www.sigresham.org

THE AMERICAN LEGION POST #30

Gresham, 97030 (510) 427-4444

THE INTERTWINE ALLIANCE FOUNDATION

2100 SW River Parkway
Portland, 97201 (503) 445-0991
www.theintertwine.org

THE ROTARY CLUB OF GRESHAM

P O Box 3041
Gresham, 97030
www.greshamrotary.com

TSURU ISLAND - GRESHAM JAPANESE GARDEN

219 S Main Avenue
Gresham, 97030 (503) 969-4386
www.greshamjapanesegarden.com

NUTRITION**OPTAVIA - SUE PIAZZA**

Gresham, 97030 (503) 926-4419
www.gettingushealthy.com

OFFICE SUPPLIES & SERVICES**H2OREGON PREMIUM WATER COMPANY**

13487 SE Johnson Rd.
Portland, 97222 (503) 799-6691
www.h2oregonwater.com

OFFICE DEPOT

2205 NE Burnside
Gresham, 97030 (503) 618-8812
www.officedepot.com

PACIFIC NW OFFICE FURNITURE DESIGN, LLC

21733 SE Stark St.
Gresham, 97030 (503) 840-8895
www.pacificnwofficefurnituredesign.com

PEST CONTROL**ADVANTAGE INTEGRATED PEST ELIMINATION**

www.advantageipe.com (503) 781-8357

PHOTOGRAPHY & VIDEOGRAPHY**BLUE SECTOR MEDIA**

Gresham, 97030 (971) 344-9380
jamestolliver.com

FIRESIDE MEDIA

www.fireside.media (503) 943-0527

TIGER LILY PHOTOGRAPHY

Gresham, OR (503) 481-5992
www.tigerlilyphotos.com

VISUAL IMPRESSIONS PHOTOGRAPHY, LLC

3650 SE Powell Valley Rd.
Gresham, 97080 (503) 320-3076
www.visualimpressions.org

ZJS PRODUCTIONS

Gresham, 97030 (503) 314-7433
www.zjsproductions.com

PLUMBING**A.C.T. PLUMBING INC.**

702 SE Paropa Ave.
Gresham, 97080 (503) 912-0758
www.actplumbinginc.com/

JL INDUSTRIES INC.

802 SE 199th Ave.
Portland, 97233 (503) 256-4010
www.pppinc.net

PERFECT FLUSH

24023 NE Shea Lane #104
Wood Village, 97060 (503) 985-9461
www.perfectflushpdx.com

PRINTING, COPYING & SHIPPING**ACCUPRINT**

265 NE 2nd Street
Gresham, 97030 (503) 667-3100
www.accuprint-inkupinc.com

NIPPON EXPRESS USA, PORTLAND BRANCH

8520 NE Alderwood Street
Portland, 97220 (503) 281-6400
www.nipponexpressusa.com

PACIFIC OFFICE AUTOMATION

14747 NW Greenbrier Parkway
Beaverton, 97006 (503) 601-2343
www.pacificoffice.com

PROFESSIONAL DEVELOPMENT**EREP, INC.**

501 NE Main St
Gresham, 97030 (503) 479-8372
www.erep.com

PROPERTY MANAGEMENT**KERR PROPERTIES, INC.**

18024 SE Pine St.
Portland, 97233 (503) 666-0922
www.kerrpropertiesinc.com
(See ad on page 30)

OREGON PROPERTY MANAGEMENT, LLC

8440 NE Alderwood
Portland, 97220 (503) 731-3701
www.oregonpropertymgmt.com

YOSHIDA'S INC.

8440 NE Alderwood Rd
Portland, 97220 (503) 680-8180
www.yoshidagroup.com/our-companies.php

PUBLIC UTILITIES**GRESHAM SANITARY SERVICE INC.**

2131 NW Birdsdale
Gresham, 97030 (503) 665-2424
www.greshamsanitary.com
(See ad on page 28)

NW NATURAL

250 SW Taylor St.
Portland, 97204 (503) 721-2474
www.nwnatural.com
(See ad on page 33)

PORTLAND GENERAL ELECTRIC

121 SW Salmon Street
Portland, 97204 (503) 464-7486
www.portlandgeneral.com

ROCKWOOD SOLID WASTE, INC.

2550 NW Burnside Court
Gresham, 97030 (503) 666-3488
www.rockwoodsolidwaste.com

WASTE MANAGEMENT OF OREGON

7227 NE 55th
Portland, 97218 (503) 493-7831
www.wm.com

RADIO, TV & BROADCAST STATIONS**WAYFM 96.3**

1400 NE 136th Avenue
Vancouver, 98684 (503) 210-9290
www.wayfm.com

REAL ESTATE SERVICES**ANNA AGATAT - MT HOOD REALTY**

201 SE Dora Ave.
Troutdale, 97060 (323) 327-2790
annaagatat.com

COCHRAN PROPERTY GROUP, INC.

40 NW 2nd Street
Gresham, 97030 (503) 663-8343
www.cochranpropertygroup.com

EAST METRO ASSOCIATION OF REALTORS

501 NE Hood Avenue
Gresham, 97030 (503) 667-1211
www.emaroregon.com

FIRST AMERICAN TITLE

1205 NE Division Street
Gresham, 97030 (503) 784-7497
www.firstam.com

KELLER WILLIAMS REALTY PORTLAND ELITE

12701 SE 97th Ave
Clackamas, 97015 (503) 482-8005
www.kellerwilliamsrealtyportlandelite.com

KOHLER MEYERS O'HALLORAN INC

333 N. Main Ave.
Gresham, 97030 (503) 661-8000
www.kmorealestate.com
(See ad on page 30)

LESLEE DIRK - ERA FREEMAN & ASSOCIATES

1685 E Powell Blvd.
Gresham, 97030 (503) 318-0927
(See ad on page 31)

MATT LAGASSE - THE BROKER NETWORK, LLC

320 N. Main Ave. #213
Gresham, 97030 (971) 506-4432
www.thebrokeretworkrealty.com/agent/matt-lagasse

MICHAEL PATRICK - PREMIERE PROPERTY GROUP, LLC

501 NE Hood Ave, Suite 310
Gresham, 97030 (503) 481-0900
michaelpatrickhomes.com

MT HOOD REALTY - KAREN CROSTON & ROD BARKER

201 SE Dora Street
Troutdale, 97060 (503) 329-1249
www.mthoodrealty.com

PATTI GAGE AND ROB TOO - BERKSHIRE HATHAWAY HOME SERVICES REAL ESTATE

9201 SE 91st Ave #200
Happy Valley, 97086 (503) 939-7708
PattiGageAndRobToo.com

PREMIERE PROPERTY GROUP, LLC- MARGUERITE TRUTTMAN, REALTOR IN OR AND WA

10135 SE Sunnyside Rd.
Clackamas, 97015 (503) 329-8793
realtormarguerite.com

RE/MAX EQUITY GROUP - MATT CALLISON

2072 NE Burnside Road
Gresham, 97030 (503) 465-3122
mattcallison.equitygroup.com

ROG3RS REALTY INC

Troutdale, 97060 (503) 997-7549
rog3rsrealty.com

VALUCENTRIC LLC

www.valucentric.com (971) 400-6113

RESTAURANTS, FOOD, & BARS**BARLEY SPROUT RESTAURANT**

112 N Main Ave.
Gresham, 97030 (503) 665-7610
barleysprout.com

BOCCELLI'S RISTORANTE

246 N Main Avenue
Gresham, 97030 (503) 492-9534
www.boccellis.net

BURGERVILLE GRESHAM

2975 NE Hogan Drive
Gresham, 97030 (503) 665-0931
www.burgerville.com

CI LIFESTYLE MEALS, LLC

14808 SE Powell Blvd.
Portland, 97236 (503) 869-3564
cilifestylemeals.com

FIREHOUSE SUBS

2442 SE Burnside Road
Gresham, 97080 (503) 491-3585
www.firehousesubs.com

FRENZI FROZEN YOGURT

234 N Main Avenue
Gresham, 97030 (503) 912-1577
www.frenzifrozenyogurt.com

GRESHAM BISCUITS CAFE

1905 NE Division
Gresham, 97030 (503) 328-8838
www.facebook.com/greshambiscuitscafe

GRESHAM BURRITO SHOP

325 N Main Ave.
Gresham, 97030 (503) 912-3781
www.greshamburrito.com

HEIDI'S OF GRESHAM

1230 NE Cleveland Avenue
Gresham, 97030 (503) 667-4200
www.heidisofgresham.com

ICANDY

344 N Main Avenue
Gresham, 97030 (503) 912-3263
www.facebook.com/icandygresham

JOY POKE

1032 NW Civic Dr.
Gresham, 97030 (213) 447-1859
www.joypokebar.com

JUNKI'S RIVERVIEW RESTAURANT

29311 SE Stark Street
Troutdale, 97060 (503) 661-3663
www.riverviewportland.com

KONA ICE OF NORTH CLACKAMAS

www.kona-ice.com (503) 367-5973

LA CARRETA OF GRESHAM

660 E Burnside
Gresham, 97030 (503) 661-7647
www.lacarretaofgresham.com

MARGARITA FACTORY - GRESHAM

77 NE 4th Street
Gresham, 97030 (503) 669-0569
margaritafactory.com/locations-and-hours/gresham

MCMENAMINS EDGEFIELD

2126 SW Halsey Street
Troutdale, 97060 (503) 669-8610
www.mcmenamins.com/Edgefield

NANNA'S PLACE

1000 N Main Avenue
Gresham, 97030 (503) 328-8491
www.facebook.com/Nannasplace2021

NICHOLAS RESTAURANT

323 N Main Avenue
Gresham, 97030 (503) 666-3333
www.nicholasrestaurant.com

OLIVE GARDEN RESTAURANT

2330 SE Burnside Road
Gresham, 97080 (503) 669-3600
www.olivegarden.com

ORIGINAL ROADHOUSE GRILL

2370 SE Burnside Road
Gresham, 97080 (503) 666-2624
www.originalroadhousegrill.com

SALAD HEROES

58 NE Burnside Rd.
Gresham, 97030 (971) 274-6455
www.saladheroes.com

SPUD MONKEY'S

1716 NW Fairview Drive
Gresham, 97030 (503) 492-3880
www.spudmonkeyspnw.com

SUNNY HAN'S WOK & GRILL

305 N Main Avenue
Gresham, 97030 (503) 666-3663
www.sunnyhans.com

THE HOPPY BREWER

328 N Main Avenue
Gresham, 97030 (503) 328-8474
www.oregonshopyplace.com

TORTILLERIA Y TIENDA DE LEON'S

16223 NE Glisan Street
Portland, 97230 (503) 255-4356
www.salsalocas.com

WOOD VILLAGE BURRITO SHOP

23424 NE Halsey Street
Wood Village, 97060 (503) 512-7910
www.facebook.com/WVBurritoShop/

RETAIL - GROCERY**COSTCO WHOLESALE - PORTLAND WAREHOUSE**

4849 NE 138th Avenue
Portland, 97230 (503) 258-3741
www.costco.com

DISCOUNTS PLUS

211 NE Roberts Ave
Gresham, 97030 (503) 489-5724
www.discountsplus.com

GRESHAM LIQUOR STORE

2414 SE Burnside Road
Gresham, 97080 (503) 665-9327
www.greshamliquor.com

PLAID PANTRIES, INC.

1055 NE Kane
Gresham, 97030 (503) 646-4246
www.plaidpantry.com

RETAIL - HOME**CINDY'S WINDOW FASHIONS**

1700 NW Civic Drive
Gresham, 97030 (503) 667-8898
www.cindyswindowfashions.com

JR FURNITURE

40 NW Burnside
Gresham, 97030 (503) 491-8898
www.jrfurniture.com

RETAIL - SPECIALTY

ACCENT ON ATTITUDE
20 NW 2nd Street
Gresham, 97030 (503) 912-0332

ACE HARDWARE
16345 SE Division Street
Portland, 97236 (503) 477-8829
www.acehardware.com

BURNS FEED STORE
29215 SE Orient Drive
Gresham, 97080 (503) 663-3246
www.burnsfeed.com

COASTAL FARM AND HOME SUPPLY
2865 NE Hogan Drive
Gresham, 97030 (503) 674-5337
www.coastalfarm.com

COLUMBIA GORGE OUTLETS
450 NW 257th Way
Troutdale, 97060 (503) 669-8060
shopcolumbiagorgeoutlets.com

FEATHER YOUR NEST QUILT SHOP
130 N Main Avenue
Gresham, 97030 (971) 220-0936
www.featheryournestquiltstore.com

GRESHAM STATION
649 NW 12th Street
Gresham, 97030 (503) 450-0806
www.greshamstation.com

MARIE'S CUSTOM QUILTING
59 NE 3rd Street
Gresham, 97030 (503) 481-5117
www.mariescustomquilting.com

NANCY'S FLORAL INC.
620 NE Burnside Road
Gresham, 97030 (503) 661-0911
www.nancysfloral.com

NECTAR - GRESHAM
505 NW Burnside Rd.
Gresham, 97030 (503) 512-8123
nectar.store/gresham/

PLATO'S CLOSET
200 NW Burnside Rd.
Gresham, 97030 (503) 786-9922
www.platosclosetgresham.com

SHOP GIRL CONSIGNMENT
111 N. Main Avenue
Gresham, 97030 (503) 618-1111
shopgirlconsignment.com

SJS ACCESSIBLE APPAREL
Gresham, 97030 (503) 516-2304
www.facebook.com/SJSAccessibleApparel

THE GRESHAM TOY SHOP
126 N. Main Ave.
Gresham, 97030 (503) 489-5631
www.facebook.com/DowntownGresham

SECURITY & ALARMS

CENTRAL ELECTRONIC ALARM, INC.
8435 SE Stark Street
Portland, 97216 (503) 257-9696
www.centralelectronicalarm.com

SENIOR LIVING & SERVICES

ASSISTING HANDS HOME CARE
8800 SE Sunnyside Road
Clackamas, 97015 (503) 928-8353
www.assistinghands.com/happyvalley

AVAMERE AT CASCADIA VILLAGE
39495 Cascadia Village Dr
Sandy, 97055 (503) 668-0300
www.avamere.com/avamere-at-cascadia-village

AVAMERE AT CHESTNUT LANE
1219 NE 6th Street
Gresham, 97030 (503) 674-0364
avamereatchestnutlane.com

AVAMERE AT SANDY
17727 SE Langensand Road
Sandy, 97055 (503) 668-4199
www.avamereatsandy.com

BONAVENTURE OF GRESHAM
22514 SE Stark Street
Gresham, 97030 (503) 328-0010
www.bonaventuresenior.com

BROOKDALE MT. HOOD ASSISTED LIVING
25200 SE Stark Street
Gresham, 97030 (503) 665-4300
Brookdale.com/en/communities/brookdale-mt-hood.html

BROOKDALE TROUTDALE MEMORY CARE
1201 SW Cherry Park Rd.
Troutdale, 97060 (503) 465-8104
brookdale.com/en/communities/brookdale-troutdale.html

CARE SOLUTIONS
11124 NE Halsey Street
Portland, 97220 (503) 548-7312
www.caresolutionsnw.com

CHERRY PARK PLAZA, INDEPENDENT LIVING, ASSISTED AND MEMORY CARE
1323 SW Cherry Park Road
Troutdale, 97060 (503) 491-1661
www.cherryparkplaza.com

COURTYARD FOUNTAINS
1545 SE 223rd Avenue
Gresham, 97030 (503) 667-4500
frontiermgmt.com/communities/courtyard-fountains/

FARMINGTON SQUARE GRESHAM
1655 NE 18th St
Gresham, 97030 (503) 405-7688
www.farmingtonsquare-gresham.com

GOOD SAMARITAN SOCIETY - FAIRLAWN VILLAGE SENIOR LIVING AND SKILLED NURSING CARE
3457 NE Division Street
Gresham, 97030 (503) 667-1965
www.good-sam.com

GRESHAM SENIOR CENTER
600 NE 8th St.
Gresham, 97030 (503) 988-4870
www.greshamseniorcenter.org

MARQUIS CENTENNIAL
725 SE 202nd Avenue
Portland, 97233 (503) 665-3118
www.marquiscompanies.com

MARQUIS MILL PARK
1475 SE 100th Avenue
Portland, 97216 (503) 262-6000
www.marquiscompanies.com

MT. HOOD ADULT DAY CENTER
376 NE 219th Avenue
Gresham, 97030 (503) 512-7373
mthoodadultdaycenter.com

MT. HOOD HOSPICE
39065 Pioneer Blvd.
Sandy, 97055 (503) 668-5545
www.mthoodhospice.org
(See ad on page 52)

MT. HOOD SENIOR SOLUTIONS
376 NE 219th Avenue
Gresham, 97030 (971) 400-7030
www.mhoodseniorsolutions.com

OASIS SENIOR ADVISORS
www.oasisseioradvisors.com/pdx (503) 348-2822

POWELL VALLEY ASSISTED LIVING AND MEMORY CARE COMMUNITY
4001 SE 182nd Avenue
Gresham, 97030 (503) 665-2496
www.powellvalley.net

PRESTIGE SENIOR LIVING HUNTINGTON TERRACE
1410 NE Cleveland Avenue
Gresham, 97030 (503) 465-1404
www.prestigecare.com
(See ad on page 35)

THE COTTAGES SENIOR LIVING MEMORY CARE
1808 SE 182nd Avenue
Portland, 97233 (503) 492-6942
thecottagesliving.com

THE VILLAGE RETIREMENT CENTER
4501 W. Powell Blvd.
Gresham, 97030 (503) 665-3137
www.villageretirementcenter.org/

VISITING ANGELS
202 NE Kelly Avenue
Gresham, 97030 (503) 661-0600
www.visitingangels.com

SKILLED NURSING & REHAB

PRESTIGE POST-ACUTE AND REHAB - GRESHAM
405 NE 5th Street
Gresham, 97030 (503) 666-5600
www.prestigecare.com

REGENCY GRESHAM NURSING & REHABILITATION
5905 SE Powell Valley Road
Gresham, 97080 (503) 665-1151
www.regency-pacific.com

SPORTS & RECREATION

ALL ABOUT ADVENTURE EXCURSIONS
Gresham, OR (503) 781-6473
www.aaaexcursions.com

ANDERSON MARTIAL ARTS
301 NE Roberts Avenue
Gresham, 97030 (503) 665-8596
www.danandersonkarate.com

EASTSIDE TIMBERS

510 NE Roberts Avenue
Gresham, 97030 (503) 667-8312
www.eastsidetimbers.com

GLENDOVEER GOLF & TENNIS

14015 NE Glisan
Portland, 97230 (503) 253-7507
www.playglendoveer.com
(See ad on page 26)

GRESHAM BICYCLE CENTER

567 NE 8th Street
Gresham, 97030 (503) 661-2453
Less than 15 minutes from downtown.
www.greshambike.com

GRESHAM-BARLOW YOUTH BASEBALL/SOFTBALL

219 S Main Avenue
Gresham, 97030
www.gbybs.org

MT. HOOD AQUATICS

P O Box 129
Gresham, 97030 (503) 491-7243
www.mthoodaquatics.org

MT. HOOD LANES, INC.

2311 E Powell Blvd.
Gresham, 97080 (503) 492-9820
www.mthoodlanes.com

NORTHWEST GYMNASTICS TRAINING CENTER

2919 NW Division St
Gresham, 97030 (503) 512-8584
www.nwgymnasticstc.com

PDX EASTSIDE TRAINING

1228 NE Kelly Ave.
Gresham, 97030 (503) 912-8956
www.pdxeastside.com

PERSIMMON COUNTRY CLUB

500 SE Butler Road
Gresham, 97080 (503) 674-3259
www.persimmoncountryclub.com

SPORTS MANAGEMENT WORLDWIDE

1100 NW Glisan
Portland, 97209 (503) 445-7105
www.smwww.com

U.S. WORLD CLASS TAEKWONDO

39 NW 3rd Street
Gresham, 97030 (503) 674-4800
www.kidslovetkd.com

TELECOMMUNICATIONS**CRICKET WIRELESS AUTHORIZED RETAILER**

1855 NE Division St.
Gresham, 97030 (503) 328-0311
www.cricketworkless.com

DAY WIRELESS SYSTEMS

4700 SE International Way
Milwaukie, 97222 (503) 228-9292
www.daywireless.com

ZIPLY FIBER

4155 SW Cedar Hill
Beaverton, 97005 (503) 866-4940
www.ziplyfiber.com

TRANSPORTATION**FIRST STUDENT, INC.**

1625 SE Hogan Road
Gresham, 97080 (503) 665-8193
www.firststudentinc.com

SAVVY CARE MOBILITY

532 N Main Ave
Gresham, 97030 (360) 339-2792
savvycaremobility.wixsite.com/website

TRAVEL SERVICES**BUCKET LIST TRAVEL TOURS**

www.bucketlisttraveltours.com (503) 926-4419

C.P. TRIPS, INC.

12675 SE Hacienda Drive
Damascus, 97089 (503) 658-5646
www.cptripsinc.com
(See ad on page 23)

COLUMBIA GORGE TOURISM ALLIANCE

P O Box 1037
Stevenson, 98648 (509) 427-8911
www.visitcolumbiarivergorge.com

GOLDEN TICKET ADVENTURES - SPECIALIZING IN EVERYTHING DISNEY

Gresham, 97080
www.golden-ticketadventures.com

TRAVEL PORTLAND

1000 SW Broadway
Portland, 97205 (503) 275-9797
www.travelportland.com

WALKER TRAVEL AND CRUISES

1005 N Main Avenue
Gresham, 97030 (503) 666-3700
www.walkertravel.com

VIDEO PRODUCTION AND TRAINING**METROEAST COMMUNITY MEDIA**

829 NE 8th St
Gresham, 97030 (503) 667-8848
www.metroeast.org
(See ad on page 31)

NOTES

Health & Wellness



Bringing a Holistic Touch to Family Practice

Monday - Friday 7am - 6pm | Saturday 8am - 2pm

Accepting New Patients!

Accepting Commercial, Medicare, and Medicaid Insurance

Affordable Self Pay Rates Available

503-665-1010

24900 SE Stark St. Suite 205, Gresham | mtnviewfamilypractice.com

SMALL GROUP & EMPLOYEE BENEFITS

INDIVIDUAL & FAMILY MEDICAL INSURANCE

MEDICARE SUPPLEMENTAL PLANS

Get Your Quote Today!



HEALTHBENEFITS 411



LESLIE PARKER

Licensed Agent in OR/WA

HEALTHBENEFITS411.COM

503.891.5793

f @HEALTHBENEFITS411



**Your #1 ranked hospice on
Care Compare
for the past 3 years!**

mthoodhospice.org | 503.668.5545 | non-profit



WESTON DEALERSHIPS

2022 TELLURIDE



Come Test Drive
it today at
Weston Kia

2021 Telluride SX with Prestige Package shown with optional features. Not all optional features available on all trims. Some features may vary.
For MotorTrend SUV of the Year article, please visit www.motortrend.com/news/kia-telluride-2020-suv-of-the-year.

2022 SORENTO



The Kia Sorento packs peak style, technology and versatility in a compact sport utility vehicle.

**It's a different
breed of capable.**

SEE THE ALL NEW 2022 KIA SOUL

The 2022 Kia Soul hatchback provides comfort, versatility, & innovation.

**Next Level
Versatility.**



Advantis Credit Union

Get to know a better way to bank.

Live in western Oregon or anywhere in Washington? Perfect!

Because Advantis is absolutely made for you.

We're a local financial co-op built to help our members reach their financial dreams and our communities grow stronger every day.



Real value for members

We offer competitive rates and extraordinary service, every day.



Not for profit, all for you

We return profits to our members, not corporate shareholders.



Easy does it

We keep things simple, convenient, and thoughtful for members.



Community matters

We donate time, talent, and money to help our communities thrive.



We're #1, but don't take our word for it

In Forbes' 4th annual list of America's Best Credit Unions in Each State, Advantis was ranked the best credit union in all of Oregon.



www.advantiscu.org/join