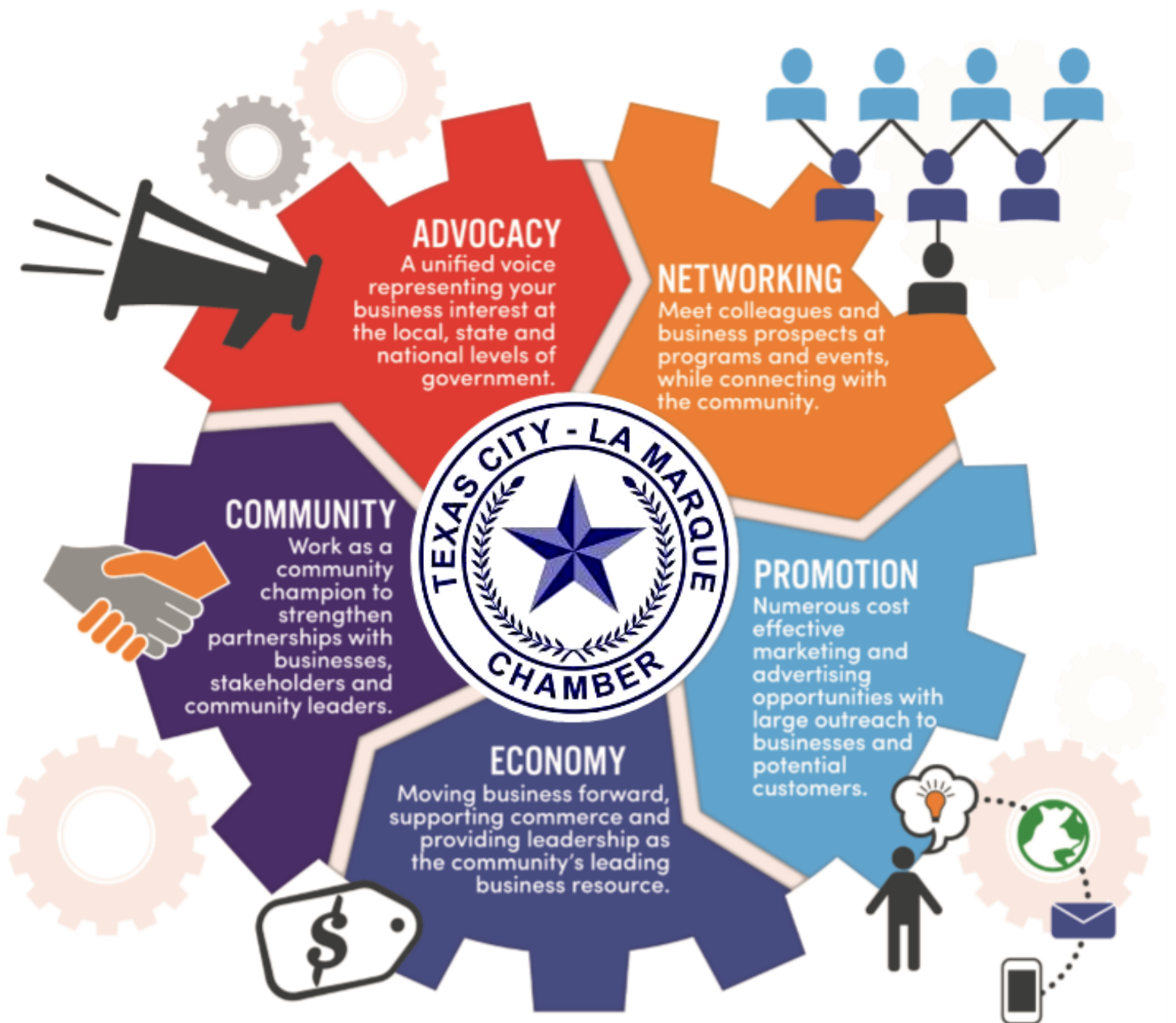




BENEFITS OF CHAMBER MEMBERSHIP

SERVE | CONNECT | GROW

www.TCLMchamber.com



Let the *power* of the
CHAMBER work for you!



Benefits of Chamber Membership

Business & Legislative Advocacy

- The Chamber represents your interests daily at the local, state and federal levels.

Programs & Events

- The Chamber hosts more than 30 annual, quarterly, and monthly events throughout the year.

Marketing & Visibility

- On the Chamber website
- Known as an active member in the community
- The Chamber makes referrals to members only.

Access to Information

- The Chamber sends news to members before it goes out to the public.
- Tuesday “Stay in the Loop” and Thursday “Member Connections” E-blasts

Increased Business

- According to the Schapiro Study, people are 63% more likely to do business with a Chamber Member.

Network Building

- The Chamber holds networking events every month so members can meet, develop and grow business relationships and increase their overall professional network



Chamber Mission

To serve members and enhance economic and community development.

Chamber Vision

To be recognized as a vital resource, providing relevant, innovative and impactful programming that produces a healthy business climate and an enhanced quality of life.



FREQUENTLY ASKED QUESTIONS

- **What kinds of businesses and organizations join the Chamber?**
A: Businesses of every size and industry, as well as trade and professional associations are Texas City-La Marque Chamber members.
- **My business is not in Texas City or La Marque, why should I join the Texas City- La Marque Chamber?**
A: Many organizations are members of several local Chambers. If you do business in Texas City and La Marque, you should be a member of the Texas City-La Marque Chamber.
- **How do I join?**
A: Fill out an online form, come by the office and fill out a membership application or call (409) 935-1408.
- **Is my Chamber membership tax deductible?**
A: Yes. Your Chamber investment is 95% deductible as a business expense.
- **How much does it cost to become a member?**
A: The Chamber uses an investment schedule that is determined by the type and size of your business. Minimum dues for a micro business range from \$350 annually.
- **How can I get involved?**
A: Participation is key and being involved helps make the difference. Being a member of the Chamber creates important connections that enable individuals and companies to achieve more.
- **How does the Chamber benefit my business?**
A: As the leading local advocate for business, the Chamber helps create a climate of growth and success in which all companies regardless of size or industry can prosper.



CHAMBER BOARD OF DIRECTORS



KEVIN BOGARD
Marathon
Petroleum



JON BRANSON
Texas City Economic
Development



KIRK BROILES
Scribbles
Embroidery



JAMES BRUMLEY
Oiltanking
Texas City L.P.



JAY CARNES
Carnes Funeral
Home



**JOSHUA
CHAPMAN**
Chapman Front
End & Brakes



SHANE DAY
Kodiak Metals
Recycling



**RICHARD
DEVRIES**
Standard
Steel Supply



**DR. MELISSA
DUARTE**
Texas City ISD



HARRY FAUST
Faust Distributing



FELIX HERRERA
Awesome Auto
Accessories



ALAN HUTCHINS
A&A Machine
& Fabrication



**CHARLES "TINK"
JACKSON**
City of La Marque



APRIL JONES
Queens Attic
Boutique



THOMAS KEIM
Industrial
Commissioning
Consultants
International



CAITLIN KIM
Domac, Inc.



SHANE LONG
BWC Terminals



MANNY LOPEZ
El Cubano
Cigar Factory



JAIMIN MODI
HCA Houston
Healthcare Mainland



CORY MOSS
Valero



SAM NAVARRO
Gartner Coatings



RAY NUNEZ
Taylor & Hill



BOB SENTER
Texas First
Insurance



**SONNY
THOLCKEN**
Trey Industries



CANDICE TOWLES
Texas First Bank



**TERRANCE
TREVINO**
BP Texas City
Chemicals



ANDY VENABLES
Eastman Chemical
Texas City



CHRISTINE WADE
UTMB Health



CATHIE WOITINA
Associated
Credit Union
of Texas



EXECUTIVE BOARD 2021



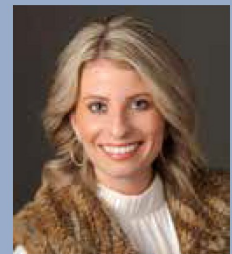
**GEORGIA MEYER
BARZILAY**
Chairman
Karat Creations Jewelry



RON ASSAD
Chair Elect
Gallant Builders



RAMIRO BARBA
Vice Chair/Secretary
Port of Texas City



SHANNON DOYLE
Vice Chair
South Land Title



GAIL FIGUEROA
Vice Chair/ Treasurer
AMOCO Federal
Credit Union



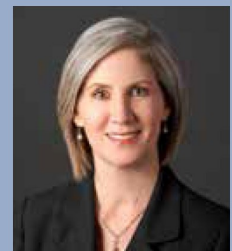
MIKE MEYER
Vice Chair
Ashland



DR. WARREN NICHOLS
Vice Chair
College of
the Mainland



RUSTY PLACKEMEIER
Past Chairman
Lyons & Plackemeier



PAGE MICHEL
President/CEO
TCLM Chamber
of Commerce

CONNECT WITH YOUR COMMUNITY



This new quarterly publication will feature small businesses in Texas City and La Marque with special offers and “Hot Deals” to entice residents to support local businesses.

You can view “Hot Deals” on the Chamber website at www.TCLMchamber.com.

Click on “Resources” then “Hot Deals”. This promotion is free to all Chamber members.

Chamber Members offering “Hot Deals” are included in this coupon book at no cost. Low cost ad spaces are also available!

The Ripple Effect When You Shop Local



YOU CONNECT WITH YOUR COMMUNITY.

Shopping locally means bumping into friends, enjoying lively streets, playing in the toy store, and trading neighborhood news with the people behind the counter. Local businesses make communities work.

In places with more local businesses, people have stronger social ties and participate more in civic affairs.

ANNUAL SPONSORSHIP OPPORTUNITIES

Gain Greater community exposure and recognition with Chamber sponsorships! The 2021 menu outlines the valuable benefits of each program/event. Overall sponsorships totals at the amounts listed below include additional exclusive promotions for a full 12 months.

Additional high-impact promotions include recognition in the annual Texas City-La Marque Community Guide & Business Directory, the monthly Chamber Express Newsletter, weekly “Stay in the Loop” emails to thousands of readers, signage at the Chamber, your logo and direct website link on the Chamber home page at www.TCLMchamber.com and more!

For further details about top-tier sponsorship, contact Chamber President, Page Michel at page@texascitychamber.com

COMMUNITY CHAMPION Sponsorship Opportunity	Sponsorships totaling over \$30,000 will be recognized in our publications and e-blasts continuously throughout the year
CHAIRMAN’S COUNCIL Sponsorship Opportunity	Sponsorships totaling over \$20,000 will be recognized in our publications and e-blasts continuously throughout the year
PRESIDENT’S COUNCIL Sponsorship Opportunity	Sponsorships totaling over \$10,000 will be recognized in our publications and e-blasts continuously throughout the year
PARTNERS Sponsorship Opportunity	Sponsorships totaling over \$8,500 will be recognized in our publications and e-blasts continuously throughout the year

CHAMBER SPONSORSHIP OPPORTUNITIES MENU-2021

<p>ANNUAL BANQUET March 25, 2021 at the Doyle Convention Center</p>	<p>PRESENTING SPONSOR: \$5000 <i>Headline Sponsor Recognition, Three Corporate Tables and 24 VIP Tickets to Reception</i></p> <p>PLATINUM SPONSOR: \$3,000 <i>Three Corporate Tables and 24 VIP Tickets to Reception</i></p> <p>GOLD SPONSOR: \$2,500 <i>Two Corporate Tables and 16 VIP Tickets to Reception</i></p> <p>SILVER SPONSOR: \$1,500 <i>One Corporate Table and 8 VIP Tickets to Reception</i></p>
<p>LEADERSHIP MAINLAND Sessions are held February through December</p>	<p>PROGRAM SPONSOR: \$2,500 <i>Sponsors transportation costs, shirts and supplies for participants. Receives recognition in newsletters, social media and all Leadership Mainland materials.</i></p>
<p>GALVESTON COUNTY DAY AT THE CAPITOL March - April 2021</p>	<p>PROGRAM SPONSOR: \$1,000 <i>(4 available)</i> <i>Sponsor recognition on all materials printed for Day at the Capitol participants.</i></p>
<p>BUSINESS LUNCHEONS (5)</p> <ul style="list-style-type: none"> • STATE OF THE CITIES & COUNTY • STATE OF INDUSTRY • EMERGENCY PREPAREDNESS • LEGISLATIVE WRAP-UP • WOMEN IN LEADERSHIP AWARDS <p><i>(Sponsorships are per event)</i></p>	<p>LUNCHEON SPONSOR: \$1,000 <i>Table for 8 people. Recognition in publicity. Signage and MC recognition at event.</i></p> <p>SPOTLIGHT SPONSOR: \$500 <i>Table for 8. Eligible to provide your promotional items /giveaways at event. Does not include recognition in publicity or print materials.</i></p> <p>RESERVED CORPORATE TABLE : \$250 <i>Reserved seating for 8 people</i></p> <p>CENTERPIECE SPONSOR: <i>Details Upon Request</i></p>
<p>INDUSTRIAL TRADE SHOW July 20, 2021</p>	<p>CORPORATE SPONSOR: \$4000 <i>(limit of 2)</i> <i>Headline recognition on invitations and all publicity. Includes one booth at the Trade Show.</i></p> <p>Booth size 10 x 10: \$750 Booth size 20 x 10: \$1500</p>
<p>HEALTH & LIFESTYLE EXPO with “Healthy Living” Luncheon November 18, 2021</p>	<p>PRESENTING SPONSOR: \$4,000 <i>Headline Sponsor recognition, two tables for 8 at luncheon and one Expo Booth size 20x10.</i></p> <p>GOLD SPONSOR: \$2,000 <i>Two tables at luncheon, one Expo Booth size 20x10.</i></p> <p>SILVER SPONSOR: \$1,000 <i>One table at luncheon, one Expo Booth size 10x10.</i></p> <p>BRONZE SPONSOR: \$500 <i>One table for 8 people at luncheon.</i></p>
<p>SHOP LOCAL Coupon Book Quarterly Publication to Showcase Small Businesses</p>	<p>MASTHEAD SPONSOR (2 levels): For 4 issues—\$2,000 For 2 issues—\$1,000 <i>Advertising rate sheet available upon request</i></p>

NEW TEACHER RECEPTION August 2021 — date TBA	PRESENTING SPONSOR: \$1,000 LUNCH SPONSOR: \$500 <i>Sponsor recognition in print and online promotions and on signage at event.</i>
SHRIMP BOIL & DANCE August 20, 2021	PRESENTING SPONSOR: \$5,000 <i>Recognition in publicity, on Tshirts, signage and MC recognition at event. Includes 25 tickets.</i> GOLD SPONSOR: \$2,500 <i>Recognition in publicity, on Tshirts and signage at event. Includes 15 tickets.</i> SILVER SPONSOR: \$1,500 <i>Recognition in publicity and signage at event. Includes 10 tickets</i>
GOLF CLASSIC September 29-30, 2021 hosted at Bayou Golf Course (rain dates Oct. 6-7)	CHAMPION SPONSOR: \$15,000+ TOUR SPONSOR: \$7,500 MASTERS SPONSOR: \$5,000 ACE SPONSOR: \$2,500 EAGLE SPONSOR: \$1,500 BIRDIE SPONSOR: \$1,000 HOSPITALITY TENT SPONSOR: \$1,800 GOLF TEAM (4 players): \$1,200 GOLF SIGN SPONSOR: \$175 <i>Sponsor recognition in advertising, publicity, print and online promotions—varies with levels. Full details sent to members in June 2021.</i>
BAYOU FEST October 16, 2021 at Highland Bayou Park	PRESENTING SPONSOR: \$7,500 <i>Includes headline recognition on all advertising & publicity and sponsorship of all events.</i> GOLD SPONSOR: \$5,000 <i>Includes all events.</i> SILVER SPONSOR: \$2,500 <i>Includes choice of three select events.</i> BRONZE SPONSOR: \$1,500 <i>Includes one event.</i> <i>Sponsors are all recognized in online promotions, on signage at event and on Tshirts.</i>
“It’s 5 O’Clock Somewhere” ONLINE AUCTION November 11-18, 2021	GOLD SPONSOR: \$2,000 SILVER SPONSOR: \$1,000 BRONZE SPONSOR: \$500 <i>Sponsor recognition in print publicity, on website, and in all online promotions.</i>
WOMEN IN BUSINESS Monthly events —Dates TBA	EVENT SPONSOR: \$500 <i>Sponsor recognition per event, in print and online promotions and on signage at event.</i>
YOUNG PROFESSIONALS NETWORK Monthly events —Dates TBA	EVENT SPONSOR: \$500 <i>Sponsor recognition per event, in print and online promotions and on signage at event.</i>

RIBBON CUTTINGS



New members are eligible to host a ribbon cutting and they offer high-impact exposure and opportunities to make key connections in the community.

- To arrange a Ribbon Cutting contact Jordan at 409-935-1408 or Jordan@texascitychamber.com to schedule your ribbon cutting event.
- Set date and time. Traditionally the best days of the week are Tuesday, Wednesday and Thursday (10:00 am—2:00p.m.)
- Invite guests. The Chamber Board of Directors, members and local officials will be notified.
- You may wish to provide refreshments and/or give a tour of your facility after the ribbon is cut and a photo is taken for publicity.

The Chamber provides:

- Ribbon and Scissors
- Photography
- Invitation to elected officials, Chamber board and members.
- Publicity in the Chamber Express newsletter, Chamber Facebook page and Instagram.





APRIL

April 8	Young Professionals
April 15	Women In Business “Symptoms Women Shouldn’t Ignore”
April 20	Chamber U Workshop (10:00am)
April 27	State of Industry Business Luncheon

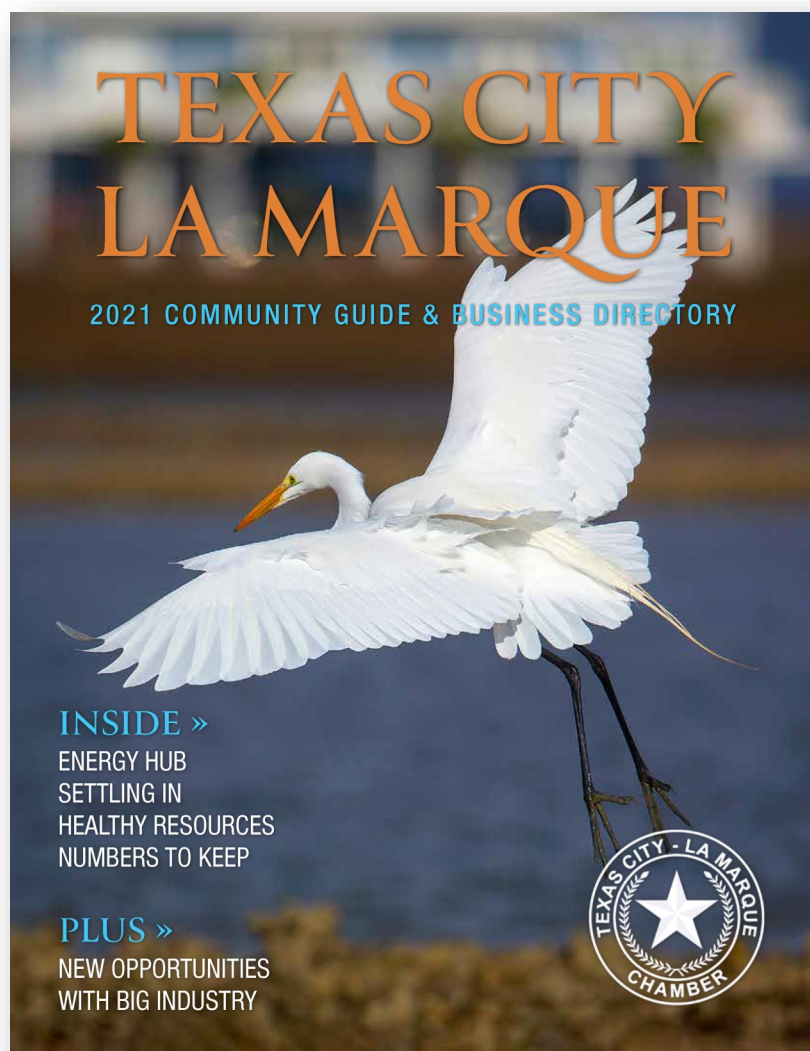
MAY

May 13	Young Professionals (11:00am)
May 13	Women In Business (11:30am)

JUNE

June 4	Leadership Mainland
June 9	Emergency Preparedness Business Luncheon
June 10	Young Professionals
June 17	Women In business “Family Health & Fitness”
June 29	Chamber U Workshop

We promote our members here!



Web Site

All members are listed on the Chamber website's Member Directory with a direct link to your website.

Chamber E-Blast

This weekly e-blast is emailed to over 3600 Chamber members and their representatives.

Chamber Express Newsletter

New members will be listed and be spotlighted in the monthly newsletter.

Community Guide and Business Directory

This annual directory/magazine has business listings for all our members including advertisements and events. The Chamber works diligently to promote the marketplace and elevate the quality of life for all businesses.



Texas City-La Marque Chamber of Commerce

9702 E.F. Lowry Expressway

Texas City, Texas 77591

409-935-1408 | www.TCLMchamber.com

Jordan@texascitychamber.com





**Texas City-La Marque
Chamber of Commerce**
9702 E.F. Lowry Expressway
Texas City, Texas 77591
409-935-1408

MEMBERSHIP LEVELS

TYPE OF MEMBERSHIP	AMOUNT	+ PER NUMBER OF	TOTAL
BASE MEMBERSHIP : 1- 4 EMP	\$350.00		
5-9 EMPLOYEES	\$375.00		
10-19 EMPLOYEES	\$450.00		
20-49 EMPLOYEES	\$525.00		
50-99 EMPLOYEES	\$750.00		
100—249 EMPLOYEES	\$1,000.00		
250—499 EMPLOYEES	\$2,500.00		
500 + EMPLOYEES	\$5,000.00		
NON PROFIT ASSOCIATIONS	\$200.00		
RESTAURANTS	\$350.00 + \$1.00	NUMBER OF SEATS	
HOTELS	\$350.00 + \$2.00	NUMBER OF ROOMS	
APARTMENTS	\$350.00 + \$2.00	NUMBER OF SPACES	
LICENSED PROFESSIONALS: ACCOUNTING, ATTORNEYS, CON- SULTANTS, MARKETING/PUBLIC RELATIONS, MEDICAL, REALTORS,	\$350.00 + \$110.00 PER PROFESSION- AL OVER 2	NUMBER OF PROFESSIONALS	
HOSPITALS/ NURSING HOMES, ASSISTED LIVING	\$350.00 + \$3.00 PER BED	NUMBER OF BEDS	
FINANCIAL INSTITUTIONS	\$350.00 + \$40.00 PER MILLION IN	NUMBER OF DEPOSITS (ENTER AS DECIMAL	
INDUSTRIAL FACILITIES/ PETROCHEMICAL	\$3,000 MINIMUM		
UTILITIES	\$350.00 + .15 PER CUSTOMER	NUMBER OF CUSTOMERS HOOKUPS	
ONE TIME ADMINISTRATION FEE	\$25.00		\$25.00
TOTAL			



Texas City-La Marque Chamber of Commerce Membership Application

ANNUAL INVESTMENT \$ _____ DATE _____

COMPANY NAME _____

ADDRESS _____

CITY, STATE, ZIP _____

OWNER/MANAGER _____

PHONE _____

FAX _____

EMAIL _____

WEBSITE _____

TYPE OF BUSINESS _____

NUMBER OF EMPLOYEES _____

SIGNATURE _____

I understand that my investment in the Texas City-La Marque Chamber of Commerce will be for the betterment of the Texas City and La Marque area and will be continuous until cancelled by written notice. Membership investment in the Chamber of Commerce may be tax deductible as an ordinary and necessary business expense. Investments paid to the Chamber are NOT a charitable tax deduction for federal income tax purposes. The Chamber is not a charity, but serves as an advocate organization for area business.

TEXAS CITY-LA MARQUE CHAMBER OF COMMERCE
9702 E.F. Lowry Expressway | Texas City, Texas 77591
Phone: 409-935-1408 | Fax: 409-316-0901 | Website: www.texascitychamber.com