

GAINES TOWNSHIP

Community Business Directory



Provided by:

GAINES
CHAMBER OF COMMERCE



8561 Kalamazoo Ave SE
Caledonia, MI 49316-8270
Phone: (616) 337-8138
www.cutlervillegaineschamber.org

CUTLERVILLE

GAINES
MARKETPLACE

DUTTON

Hometown Behavioral Health Organization

Now 4th Largest in the Nation



Van Andel Center



Postma Conference Center



Rustic Market Thrift Store

Walk-In Psychiatric Care • Inpatient • Outpatient
Testing • Telehealth • Residential • Addiction Treatment
pinerest.org | 616.455.5000



CHAMBER BOARD MEMBERS

Executive Director Barb Nauta
8561 Kalamazoo Ave SE Ph (616) 337-8138
Barb@cutlervilllegaineschamber.org

President of the Board Dan Van Singel
Van Singel Financial
7199 Kalamazoo Avenue SE Ste 200 Ph (616) 259-1008
Dan@vansingelfinancial.com

Board Treasurer Matt Hofman
Michigan First Credit Union - Breton Office
Ph (616) 953-5417
mhofman@michiganfirst.com

Board Secretary Maria Robertson
HealthBridge Post-Acute Rehabilitation
2060 Health Drive SW
maria.robertson@healthbridgegr.com

Amber Lenhart
Hulst Jepsen Physical Therapy
7169 Kalamazoo Ave SE Suite 200 Ph (616) 827-3010
www.hjphysicaltherapy.com

Brad Spurlin
Chick-Fil-A
1545 Edgeknoll DR SE Ph (616) 656-6000
brad.spurlin@cfagsouth.com

Heidi VanderKolk
Heidi Christine's Salon and Spa
7100 Kalamazoo Avenue SE Ph (616) 656-8961
hmoconnor@gmail.com

Jay Mahabir
Meijer Market
0-550 Baldwin
Jay.mahabir@meijer.com

Matt Van Dore
Matrix Printing & Mailing
6621 Division Ave S Ph (616) 455-0303
matt@matrixgr.com

Nate Vriesman
Vriesman & Korhorn Civil Engineers
7885 Byron Center SW Suite A Ph (616) 277-2185
www.VKcivil.com

Justin Buitert
Railtown Brewing Co
3595 68th St SE Ph (616) 881-2364
justin@railtownbrewing.com

TABLE OF CONTENTS

Board Members	3
Welcome	5
Strategic Partners	6
Important Numbers	8
COVID-19 Info	9
Membership Info	11
History	13
About Library & Schools	14
Parks & Recreation	15
Map	16
Business Listings	18

DIRECTORY CREDITS

Promoted by:
Gaines Chamber of Commerce

Photos: Dr. Paul France, Barb Nauta, Matt Van Dore, Sandy Dobbs & others

Cover Photos: Justin Buitert

Design & Printing:
Matrix Printing
& Mailing



We very much appreciate the sponsors of this publication and have taken every reasonable effort to ensure the accuracy of the listings and advertisements contained in this directory. However, the Chamber is not responsible for errors or omissions in any content.

GETTING YOU BACK TO LIFE WITHOUT PAIN

PERSONALIZED CARE FOR
BETTER QUALITY OF LIFE

At Thornapple River Orthopedics, we treat athletes and patients of all ages with one goal in mind: to get you back to doing the things you enjoy as quickly as possible.

From shoulder and knee injuries to arthritic issues and fractures, Dr. David Heeringa and Dr. James Horton Jr. treat a wide range of musculoskeletal conditions with the highest quality orthopedic care.

They will also take the time to listen and consider your lifestyle and wishes before determining the best course of treatment, whether conservative measures are appropriate or procedures such as anterior approach hip replacement or custom computer-guided knee replacement are necessary.



THORNAPPLE RIVER
ORTHOPEDICS

thornappleriverortho.com | 616.266.9100

7169 Kalamazoo Ave SE | Suite 100 | Caledonia, MI 49316



WELCOME

The Gaines Chamber of Commerce Board of Directors and our amazing community business members are pleased to provide the Gaines Township Community Business Directory.

This publication is packed with information about our community and offers a variety of businesses that are available to all of you.

Our chamber board and our members are dedicated, through advocacy and collaboration, to provide an empowered and prospering business community.

As the 2020-2021 Chamber Executive Director, I am honored to work alongside our dedicated Chamber Board of Directors who all share the same vision to deliver value to our members and community, advance community business collaboration, and accelerate business growth.

We know that strong leadership, community involvement, and collaboration are essential to strengthen and build a healthy community. We consider our members family, and by working together we can create economic success and positively impact our community.

We invite and encourage you to get involved and join the Gaines Chamber of Commerce. Your membership will benefit everyone in this community. Let us continue to work together to revitalize our business community.

Please take the time to register online today at cutlervillegaineschamber.org

I look forward to meeting and working with all of you.

Wishing you all the best.

Sincerely,
Barb Nauta
Executive Director



COMING CHAMBER EVENTS

Check website
for coming events as there are
always new events added.

www.cutlervillegaineschamber.org

8561 Kalamazoo Ave SE Caledonia, MI 49316-8270
Phone: 616.337.8138 www.cutlervillegaineschamber.org

Thank you Strategic Partners

PRESENTING PARTNER



GOLD PARTNERS

vriesman & korhorn
CIVIL ENGINEERS

SUPERIOR ASPHALT, INC.
SERVICE BEYOND THE SURFACE

Chick-fil-A
Grand Rapids South

STONEHENGE
CONSULTING PLC

SILVER PARTNERS

FAMILY FARE
SUPERMARKETS

HealthBridge
Post-Acute Rehabilitation
Operated by Mission Point Healthcare Services

SULLIDIGITAL

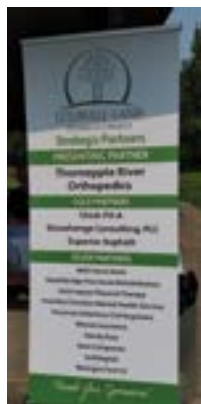
KENT
COMPANIES
LEADERS IN CONCRETE

Michigan First
CREDIT UNION

HULST JEPSEN
PHYSICAL THERAPY

PINE REST Christian
Mental Health
Services

WARSEN
INSURANCE



rubber stamps
CMYK
copies
digital
labels
mailing
posters
graphics
business cards
post cards
signs
promotional products
logo
typesetting
catalogs
local
flyers
print
paper
artwork
envelopes
bookmarks
booklets
magnets
banners

matrix
printing & mailing

6621 Division Ave S
616-455-0303
www.matrixgr.com
orders@matrixgr.com

Kapteyn

WEALTH
PARTNERS

Live a life well
planned —
enjoy a life
more valuable.

CALL 616.816.1600
kapteynwealth.com
6677 Crossings Dr. SE, Suite 2
Grand Rapids, MI 49508

Disclosures: Securities offered through Raymond James Financial Services, Inc. Member FINRA/SIPC. Kapteyn Wealth Partners is not a registered broker/dealer. Investment advisory services are offered through Raymond James Financial Services Advisors, Inc.

V

VAN SINGEL
FINANCIAL SERVICES

7199 Kalamazoo Ave SE Suite 200
Caledonia, MI 49316
616-259-1008



Daniel J. VanSingel
Financial Advisor, President

Securities offered through Securities America, Inc. Member FINRA/SIPC. Advisory services offered through Securities America Advisors, Inc. VanSingel Financial Services and Securities America are separate entities.

EMERGENCY 911

Cutlerville Fire Station

11-68th Street SW Grand Rapids, MI 49548
Non-Emergency: (616) 455-7670

Dutton Fire Station

3471-68th Street SE Caledonia, MI 49316
Non-Emergency: (616) 541-0119

Kent County Sheriff-South Substation

8557 Kalamazoo SE Caledonia, MI 49316
(616) 632-6490

Non-Emergency/after hours: (616) 336-3113

HOSPITALS

Spectrum Butterworth Campus(616) 391-1774
100 Michigan St. N.E. Grand Rapids, MI

Spectrum Blodgett Campus(616) 774-7444
1840 Wealthy St. S.E. Grand Rapids, MI

Metro Health Village(616) 252-7200
5900 Byron Center Ave. S.W. Wyoming, MI

Mercy Health/ St. Mary's SW(616) 261-7191
2373 64th St. S.W. Byron Center, MI

Spectrum Health Urgent Care(616) 486-5100
6105 Wilson Ave.S.W. Wyoming, MI

Mercy Health SW Campus(616) 685-3900
2373 64th St., Byron Center, MI 24/7

URGENT CARE CENTERS

Spectrum Health Urgent Care (616) 391-8242
80 68th St SE, Grand Rapids, MI

Mercy Health SW Campus (616) 685-3900
2373 64th St., Byron Center, MI 24/7

Pine Rest Psychiatric Urgent Care ... (616) 455-5490
300 68th St Grand Rapids , MI

TRANSPORTATION

Gerald R. Ford International Airport ..(616) 456-7514
www.flygrandrapids.org

ITP (Interurban Transit Partnership) "Ride the Rapid"
www.ridetherapid.org (616) 776-1100 or
..... (616) 774-1186 (TDD)

Amtrak 1-800-872-7245
www.amtrak.com

UTILITIES

Gas DTE Energy 1-800-477-4747
Natural Gas Emergency or Leak 1-800-947-5000
www.dteenergy.com

Electric Consumers Energy

All Calls..... 1-800-477-5050
www.consumersenergy.com

Water/Sewer

Billing (616) 878-0660
Emergency..... (616) 243-1255

TOWNSHIP SUPERVISOR AND CLERK LIST

GAINES TOWNSHIP OFFICE

8555 Kalamazoo Ave SE

Caledonia, MI 49316-8270

(616) 698-6640

gainestownship.org

SUPERVISOR - Rob DeWard

(616) 698-6640 Ext. 116

robert.deward@gainestownship.org

TREASURER - Laurie Lemke

(616) 698-6640 Ext. 114

laurie.lemke@gainestownship.org

CLERK - Michael Brew

(616) 698-7980

michael.brew@gainestownship.org

STATE REPRESENTATIVE

72ND DISTRICT - Steven Johnson

(517) 373-0840

StevenJohnson@house.mi.gov

TOWNSHIP PRECINCTS

Gaines Township

Precinct 1

Gaines Township Offices 8555 Kalamazoo Ave SE

Precinct 2

Gaines Township Offices 8555 Kalamazoo Ave SE

Precinct 3

Gaines Township Library 421 68th Street SE

Precinct 4

Heritage Baptist Church 1570 60th Street SE

Precinct 5

Heritage Baptist Church 1570 60th Street SE

Precinct 6

Hillside Community Church 1440 68th Street SE

Precinct 7

Providence Church 7730 Eastern Ave SE

Precinct 8

Ada Bible Church 2045 68th Street SE

Precinct 9

Ada Bible Church 2045 68th Street SE



It is important for all employers to monitor the coronavirus outbreak and implement strategies to protect their workforce while ensuring continuity of operations.

For the most up-to-date information on COVID-19 (coronavirus) in Michigan, please visit the State of Michigan's coronavirus website.

The latest information is available at www.Michigan.gov/Coronavirus and www.CDC.gov/Coronavirus. This information can also be found on the www.cutlervillegaineschamber.org website.

While information around this outbreak is changing rapidly, the links are intended to help educate employers and employees on how to prepare for and address the impacts of the coronavirus.



Meijer Pharmacies Partner with State of Michigan to Administer COVID-19 Vaccines

Meijer has been selected by the State of Michigan to directly receive and administer COVID-19 vaccines under the Federal Retail Pharmacy Partnership Program. Our pharmacy team members will administer the first doses of COVID-19 vaccine at a limited number of stores in Wayne County to patients 65 and older beginning the week of Jan. 18.

"We are proud to be chosen by the State of Michigan as a partner to help administer these critical vaccines and we look forward to our expanded role in helping communities throughout the Midwest defeat this pandemic," Meijer President & CEO Rick Keyes said.

Customers can now register to receive a COVID-19 vaccine through Meijer, as our pharmacies continue to prepare to administer vaccinations.

Those who wish to register for the vaccine can text COVID to the number 75049 and they will receive a link to register. They can also go online to www.clinic.meijer.com to register.



**BUILDING
SOMETHING
MORE**

**KENT
COMPANIES**
LEADERS IN CONCRETE

WWW.KENTCOMPANIES.COM

MICHIGAN | TEXAS | OHIO | CAROLINAS | MISSOURI | Since 1957



**Grand Rapids Based
Full Spectrum
Business IT Support**

**Call Us Today For A
Complementary
Assessment**

616-200-8550



RE/MAX®
of Grand Rapids

Dwayne Huff
REALTOR®

(616) 204-4219
dwaynehuff@remax.net
dwaynehuff.com

5651 Byron Center Ave SW,
Wyoming, MI 49519

FRICKE
asphalt maintenance
**SEAL COAT
STRIPING
PAVING**

616.862.4125

**YOUR LOCAL ONE STOP
SHOP FOR ALL YOUR
ASPHALT NEEDS**

FRICKEASPHALT.COM

 Find us on
Facebook

GAINES CHAMBER PARTNER MEMBERSHIP LEVELS



Elite Chamber Presenting Partner \$2000

Chamber Member Dues included

Presenting Partner for Chamber Chamber Sponsored Events

Presenting Partner for all Chamber Luncheons

Presenting Partner brand recognition at all Partnering Community Events

Presenting Partner brand recognition on Chamber Website & all Chamber Events

Gold Premier Partner \$1250

Chamber Member Dues included

Event Sponsor & Team at annual Chamber Sponsored Events

Chamber Luncheon Sponsor

Business Brand recognition at all Partnering Community Events

Business Brand recognition on Chamber Website & Chamber Events

Silver Premier Partner \$550

Chamber Member Dues included

Chamber Sponsored Events Sponsor

Business Brand recognition on Chamber Website & Chamber Events

ANNUAL MEMBERSHIPS

\$325.00 Executive (100+ employees)

\$250.00 Corporate (11-99 employees)

\$185.00 Business (2-10 employees)

\$100.00 Entrepreneur/Individual/Non-Profit

Register online today!
visit www.cutlervillegaineschamber.org

Contact Chamber Director for information on other exciting package benefits



Healthy Schools.

Healthy Families.

Healthy Neighborhoods.

StreamsOfHope.org
Community Center at
280 60th St SE



Computer security concerns?
We've got you covered.



SULLIDIGITAL

Call **616.730.3600** or send an email to bill@sullidigital.com.

www.sullidigital.com

GETTING YOU BACK TO LIFE WITHOUT PAIN

PERSONALIZED CARE FOR BETTER QUALITY OF LIFE

At Thornapple River Orthopedics, we treat athletes and patients of all ages with one goal in mind: to get you back to doing the things you enjoy as quickly as possible.

From shoulder and knee injuries to arthritic issues and fractures, Dr. David Heeringa and Dr. James Horton Jr. treat a wide range of musculoskeletal conditions with the highest quality orthopedic care.



thornappleriverortho.com | 616.266.9100
7169 Kalamazoo Ave SE | Suite 100 | Caledonia, MI 49316



THORNAPPLE RIVER
ORTHOPEDICS



Growing Together

Located just 21 minutes southeast of downtown Grand Rapids, **Gaines Charter Township** is a diverse, dynamic community that places a high value on family life, good moral standards, a sense of community, and a desire to enrich the lives of all of its residents. Gaines Township is one of the fastest growing communities in West Michigan and home to regional and national organizations such as Meijer, Pine Rest Christian Mental Health Services, Spartan Nash, Amazon and Steelcase as well as quality school districts, recreational opportunities, and pristine farmland.

In the spring of 1837, Alexander Clark was the first settler and at the time, Gaines Township was nothing more than 36 square miles of wilderness, hardly appealing to the civilized eye. Yet to the hardy, enterprising pioneers, the forests, abundant supply of fresh water, and wildlife possessed a charm that was irresistible.

As settlers arrived and the heavy forests began to disappear, the land was found to be one of the richest agricultural tracts in the area, and to this day it is still considered one of the best in the county. In 1846, the area was officially organized under the name of **Gaines**. Many prominent citizens settled in the area. In 1853, John and Christina Cutler and their ten children arrived from New York and founded the town of **Cutlerville**. In 1891, Cutler's son, John Isaac, built a three-story brick house, which would later be sold to a group of pastors who endeavored to create an organization that treated all aspects of a person's well-being ~ emotional, mental, physical, and spiritual (Pine Rest).

Today Gaines Township is situated near three major highways, and within two miles of the Gerald R. Ford International Airport. Traveling our well-maintained streets, you will find major chain retailers, four parks, two trail systems, two golf courses, restaurants, a multi-screen movie theater, banks/credit unions, portions of three public school districts, charter schools, and a diverse group of churches.

Even as we grow (the 2019 census showed a 2,000+ resident increase), we keep sight of our heritage. The **Gaines Charter Township Historical Society** works diligently to develop awareness of local history and to preserve it for future generations.

Township Population

1990	14,533
1995	17,256
2001	20,112
2010	25,146
2019	27,345



Favorable Business Climate

Gaines Charter Township is not just another pretty place to live and play. Manufacturing, retail, healthcare, and food service companies abound in the township. The Switch pyramid is an icon to the technology growth in the area. There are multiple shopping opportunities and an array of large and small eating establishments all within minutes from any location in the township. Area schools, colleges, and universities provide a well-educated regional labor force.

We are happy that you are part of our community where you can live, work, do business, and enjoy life.

Gaines Charter Township Library

Gaines Charter Township has supported library service since the Depression Era. During the 1950s and 60s, Kent County provided library service at a number of bookmobile stops, both at local schools and in the Dutton and Cutlerville areas. In 1969, the Gaines Township branch of Kent District Library was opened to the public at its current location. Rapid population growth in the area led to an expansion of the building in 1987 to over 10,000 square feet.

Gaines Charter Township Branch of Kent District Library

421 - 68th Street SE Grand Rapids, MI 49548
(616) 784-2007



Schools

Gaines Charter Township is home to quality schools ~ parochial, charter, and public. Roughly 85% of all students attending one of the schools in the area graduate high school and go on to attend some kind of post-secondary school. Dropout rates have consistently been very low, and enrollment has consistently increased.

Kentwood Public Schools (MI Public School District 41160)

South Christian High School

Legacy Christian School

Dutton Christian School

Cross Creek Charter Academy



Gaines Charter Township, including the Cutlerville area, is home to six different parks. These parks boast a wide variety of amenities such as paved and rustic trails, exercise and playground equipment, baseball diamonds, soccer fields, disc golf courses, and much more. With a commitment to excellence, Gaines Charter Township strives to provide outstanding parks and recreational opportunities that will enhance the quality of life for all of its residents.

Cutler Park

- Tennis Courts
- Baseball Diamonds
- Soccer
- Picnic Area

68th Street

- Restrooms
- Open Shelter House
- Playground Equipment



Creekside Park

- Exercise Trails
- Exercise Equipment
- Soccer

68th Street & 1/4 Mile East of Eastern Ave

- Playground Equipment
- Hiking/Walking
- Restrooms
- Baseball Diamonds
- Open Shelter House
- Picnic Area

Dutton Shadyside Park

- Tennis Courts
- Open Shelter House
- Playground

Hammond Ave & 1/2 Mile North of 76th St

- Baseball Diamonds
- Picnic Area
- Restrooms.



Earle Brewer Park *

- Disc Golf
- Playground Equipment
- Hiking/Walking
- Restrooms

399 84th Street

- Basketball Court
- Baseball Diamonds
- Open Shelter House
- Picnic Area

- Tennis Courts
- Exercise Equipment
- Soccer Fields

Prairie Wolf Park

- Hiking/Walking
- Nature Viewing

84th/Kalamazoo Ave

- Cross-Country Skiing
- Picnic Area

Trails:

Cook's Crossing Trail - Eastern Ave to Cook's Crossing Residential Development

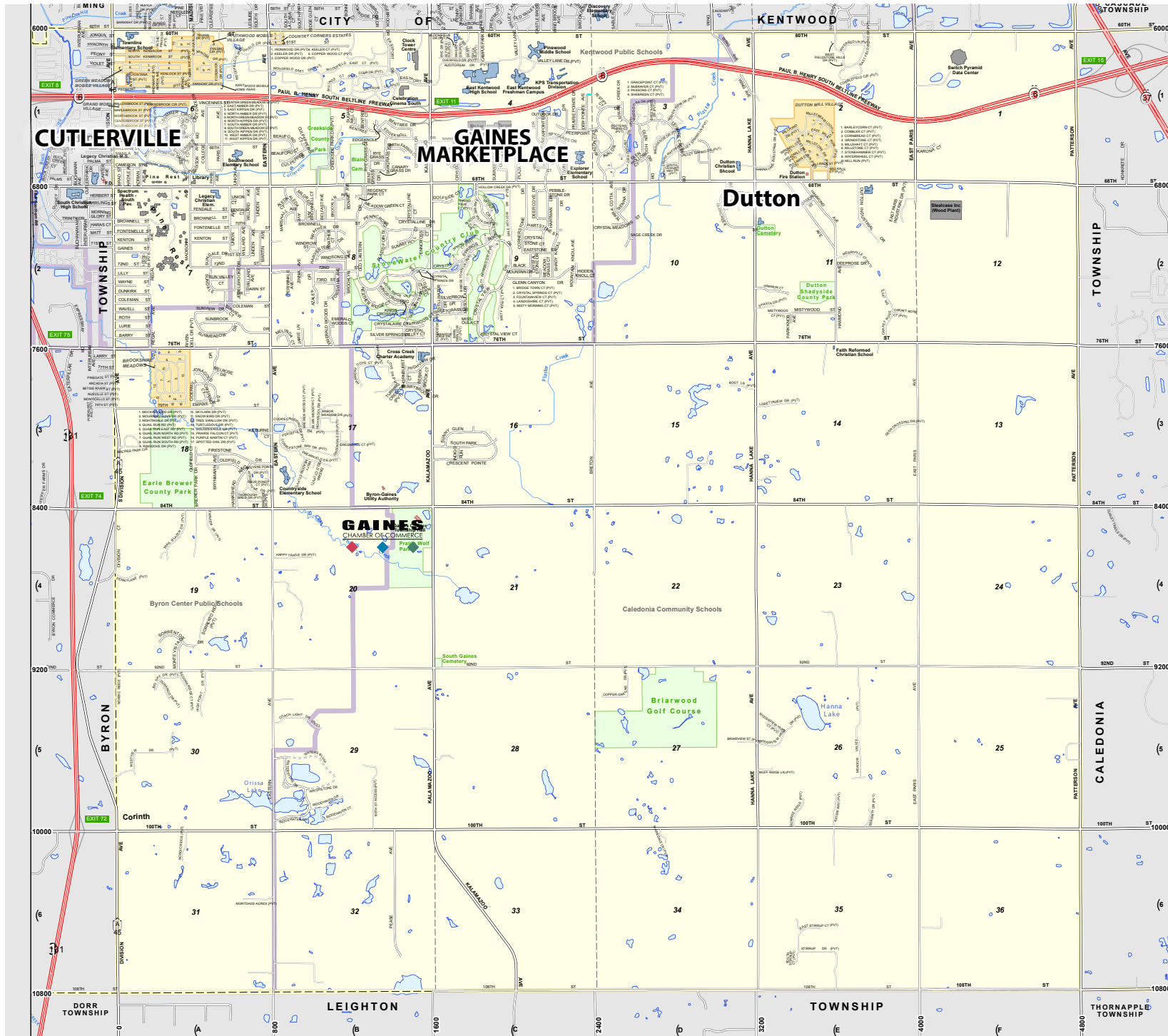
Fred Meijer M-6 Trail - Kent Trails to Paul Henry - Thornapple Trail

Paul Henry - Thornapple Trail - Grand Rapids/Kentwood border to Vermontville.

Prairie Wolf Park Trail - Within Prairie Wolf Park

Steven's Pointe Trail - Brewer Park to Eastern Ave

* Kent County Parks facility reservations can be made year round from 8:00am - 4:00pm, Monday through Friday. For reservations call (616) 336-PARK, or visit their offices at 1700 Butterworth Drive, SW Grand Rapids. You may also make your reservations online at <http://www.accesskent.com>.



*Gaines Chamber Corn Hole Event
Held July 2020*



84th Street Pub & Grille	(616) 583-1650	Dutton Mill Village - Sun Communities	(616) 698-8610
Ada Bible Church	(616) 622-3113	Dvt Electric, Inc.	(616) 538-0039
Anchor Auto Wash	(616) 281-9274	Everett's Landscape Management, Inc.	(616) 698-8064
Arbor Financial Credit Union	(269) 375-6702	Extreme Graffix	(616) 455-0388
Auto Masters, Inc.	(616) 455-4510	Family Fare - Kentwood	(616) 698-2604
Baymont Inn & Suites	(616) 583-9535	Farm Bureau Insurance - Marc Huisman Agency	(616) 532-3460
Blue Frost It LLC	(616) 200-8550	Fire Rock Grille	(616) 656-9898
BMO Harris Bank	(616) 717-5696	Fricke Asphalt	(616) 862-4125
Buist Electric	(616) 878-3315	Gaines Area Chamber of Commerce	(616) 337-8138
Burgers & Bomb Sandwiches	(616) 644-8988	Gaines Charter Township	(616) 698-6640
Byron Center Public Schools	(616) 878-6100	Gaines Historical Society	(616) 698-8464
Byron Township	(616) 878-0613	General Die & Engineering	(616) 698-6961
Carstar 76 Collision	(616) 827-7676	Good News Baptist Church	(616) 455-0420
Chick-Fil-A Grand Rapids South	(616) 656-6000	Gordon Water Systems	(616) 776-3800
Clock Mobility	(616) 698-9400	Great Lakes Insurance & Kinzie Financial Services	(616) 656-5555
Couture Cakes & Co. <i>Formerly Known As Sweet T Treats</i>	(616) 309-4081	Habitat For Humanity Restore	(616) 531-4591
Cornerstone Church	(616) 656-5270	Healthbridge Post-Acute Rehabilitation	(616) 333-1200
Covenant Christian Reformed Church	(616) 455-5120	Heidi Christine's Salon and Spa	(616) 656-8961
Creeside Storage Suites	(616) 207-9637	Huizinga Lawn Sprinkling	(616) 455-0240
Cross Creek Charter Academy	(616) 656-4000	Hulst Jepsen Physical Therapy	(616) 827-3010
Cutlerville Partners	(616) 452-6048	Ichiro	(616) 656-1830
Cutlerville Eyecare	(616) 455-2525	Integrity Insurance & Investments	(616) 698-9339
Dan Pfeiffer Used Cars & Quick Lane	(616) 583-0160	IPV Consulting	(616) 291-0377
Dan's Barber Shop	(616) 455-3060	Kapteyn Wealth Partners	(616) 816-1600
Dehaan Tile & Floor Covering	(616) 455-3540	Kent Companies	(616) 534-4909
Distinctive Catering	(616) 538-4384	Kent District Library	(616) 784-2007
Division Metal Recyclers	(616) 455-7800		
Dutton Automotive Service	(616) 698-8511		

Kentwood Community Church	(616) 455-1740	South Christian High School	(616) 455-3210
Kentwood Public Schools	(616) 455-4400	Stonehenge Consulting PLC	(616) 891-1147
Legacy Christian School	(616) 455-3860	Streams of Hope	(616) 272-3634
Lifedge	(616) 730-3065	Stroo Funeral Home	(616) 455-9280
Love INC of South Kent County	(616) 228-3492	Sulli Digital	(616) 920-9052
Lumbermen's	(616) 261-3200	Superior Asphalt, Inc.	(616) 451-3200
Macatawa Bank	(616) 554-2172	Swan Orthodontics	(616) 698-2323
Master Arts Theatre	(616) 455-1001	TCF - Cutlerville <i>Formerly Chemical Bank</i>	(616) 455-2150
Mathnasium	(616) 541-5150	The Center For Physical Rehabilitation	(616) 333-1800
Matrix Printing & Mailing	(616) 455-0303	The Springvloed Agency, Inc. - Farm Bureau Insurance	(616) 656-2130
McDonald Plumbing	(616) 698-6771	Thornapple River Orthopedics P.C.	(616) 266-9100
Meijer Gaines Marketplace Store	(616) 656-6100	Tom Stehouwer Auto Sales	(616) 455-7000
Michigan First Credit Union	(616) 953-5417	Tyler Higley Counseling	(616) 466-4724
Monroe, Sweeris, & Tromp P.L.C.	(616) 554-5800	Umi Sushi Grill	(616) 888-8668
Nordic Products, Inc.	(616) 940-4036	UPS Store	(616) 554-2039
Pine Lodge Motel	(616) 455-9531	Van Singel Financial Services	(616) 259-1008
Pine Rest Christian Mental Health Services	(616) 455-5000	Veurink's Rv Sales	(616) 281-5111
Pinegate Mobile Village	(616) 455-3420	Vriesman & Korhorn Civil Engineers	(616) 277-2185
Postema Signs & Graphics	(616) 455-0260	Warsen Insurance Agency	(616) 455-7510
Potter Distributing, Inc	(616) 531-6860	Watermark Properties - D/B/A Stonewater CC	(616) 949-0570
Preferred Homes	(616) 534-3400	Werkema Machine Company	(616) 455-7650
Railside Golf Club	(616) 878-1140	West Michigan Technology and Design Solutions	(616) 485-7600
Railtown Brewing Company	(616) 881-2364		
Raw Candi Luxury Hair	(248) 256-5834		
Red Barn Veterinary Clinic LLC	(616) 455-4850		
Re/Max of Grand Rapids - Dwayne Huff	(616) 204-4216		
Rick's Garage	(616) 455-3602		
Self-Efficient Cleaning Services	(616) 432-4411		



STONEHENGE CONSULTING PLC



Small Firm Service, Large Firm Capabilities.

We know as well as anyone that there are countless accounting providers to choose from. You need to select a firm that not only meets your needs, but is strong, credible and reliable.

Let our professionals show you the commitment and value that we bring to every relationship as a firm who really understands your industry.

Witness—firsthand—the expertise, insight and the professionalism that Stonehenge Consulting brings to every engagement.

Learn more at stonehengeplc.com

P: 616.891.1147
F: 616.891.1167
stonehengeplc.com
contactus@stonehengeplc.com

2464 Byron Station Dr SW
Byron Center, MI 49315

Member: ABC, AICPA, ASA,
CFMA, MICPA, MITA, NATP,
RPOA, SIIA



ACCOUNTANTS

Douglas Wohlberg CPA
2496 84th St SW
Byron Center MI 49315-6933
(616) 583-0094
www.wohlbergcpa.com

Monroe, Sweeris, & Tromp P.L.C.
6617 Crossings Dr SE Ste 100
Grand Rapids MI 49508-7378
(616) 554-5800
www.mstpc.com



Stonehenge Consulting PLC
2464 Byron Station Dr SW
Byron Center MI 49315-7401
(616) 891-1147
www.stonehengeplc.com

ASPHALT CONTRACTOR

Fricke Asphalt Maintenance
Caledonia, MI 49316
(616) 862-4125
www.frickeasphalt.com



Superior Asphalt, Inc.
669 Century Ave SW
Grand Rapids MI 49503-4944
(616) 451-3200
www.superiorasphalt.com

AUTO WASH

Anchor Auto Wash
451 68th St SW
Grand Rapids MI 49548-7119
(616) 281-9274
www.anchorautowash.com

Indicates Strategic Partner

AUTOMOTIVE SALES & SERVICE

Auto Masters, Inc.
6521 Division Ave S
Grand Rapids MI 49548-7803
(616) 455-4510
www.automastersgr.com

Carstar 76 Collision
174 76th St SW
Grand Rapids MI 49548-7214
(616) 827-7676
www.carstar.com/76

**Dan Pfeiffer Used Cars
& Quick Lane**

8250 Pfeiffer Farms Dr SW
Byron Center MI 49315-8288
(616) 583-0160
www.danpfeiffer.com

Dutton Automotive Service

3496 68th St SE
Caledonia MI 49316-8423
(616) 698-8511
www.duttonautomotiveservice.com

Rick's Garage

6556 Division Ave S
Grand Rapids MI 49548-7804
(616) 455-3602
www.repairpal.com/repair-shops/
auto-repair-in-cutlerville-michigan/
ricks-garage-in-cutlerville

Tom Stehouwer Auto Sales

7000 Division Ave S
Grand Rapids MI 49548-7130
(616) 455-7000
www.stehouwerauto.com

BANKS & CREDIT UNIONS

Arbor Financial Credit Union

Melissa Crawford Manager
7200 Kalamazoo Ave SE
Caledonia MI 49316-8204
(616) 541-2749
www.arborfcu.org

BMO Harris Bank

250 Monroe Ave NW Ste 400
Grand Rapids MI 49503-2293
(616) 717-5696
www.bmoharris.com

BUSINESS SECTION

Banks & Credit Unions cont.

TCF Cutlerville (formerly Chemical Bank)
6455 Division Ave S
Grand Rapids MI 49548-7802
(616) 588-3803
www.tcf.com

Macatawa Bank

1575 68th St SE
Grand Rapids MI 49508-7015
(616) 554-2172
www.macatawabank.com



Michigan First Credit Union
355 54th St SW
Grand Rapids MI 49548-5614
(616) 953-5417
www.michiganfirst.com

BEAUTY SALONS/SPAS

Dan's Barber Shop

(616) 455-3060
www.danscutlerville.com



Heidi Christine's Salon and Spa

7100 Kalamazoo Ave SE
Caledonia MI 49316-9126
(616) 656-8961
www.heidichristines.com

Raw Candi Luxury Hair

1971 E Beltline Ave NE # 106-816
Grand Rapids MI 49525-7045
(248) 256-5834
www.rawcandi.shop

BUILDING MATERIALS

Lumbermen's

8715 Byron Commerce Dr SW
Byron Center MI 49315-6919
(616) 261-3200
www.lumbermens-inc.com

BREWERY



Railtown Brewing Company
3595 68th St SE
Caledonia, MI 49316-8503
(616) 881-2364
www.railtownbrewing.com

CHIROPRACTORS

Ichiro
6690 Crossings Dr SE
Grand Rapids MI 49508-7379
(616) 656-1830
www.ichiroclinics.com

CHURCHES

Ada Bible Church
2045 68th St SE
Caledonia MI 49316-8372
(616) 868-7005
www.adabible.org

Cornerstone Church
1675 84th St SE
Caledonia, MI 49316
(616) 656-5270
www.cornerstonemi.org

Covenant Christian Reformed Church
7171 Willard Ave SE
Grand Rapids MI 49548-7361
(616) 455-5120
www.covenant-crc.org

Good News Baptist Church
6830 Eastern Ave SE
Grand Rapids MI 49508-7432
(616) 455-0420
www.gnbcgr.org

Kentwood Community Church
1200 60th St SE
Grand Rapids MI 49508-7057
(616) 455-1740
www.kentwoodcommunitychurch.com

Indicates Strategic Partner

CIVIL ENGINEER

Vriesman & Korhorn
CIVIL ENGINEERS

Vriesman & Korhorn Civil Engineers
7885 Byron Center Ave SW Ste A
Byron Center MI 49315-8199
(616) 277-2185
www.VKcivil.com

CLEANING SERVICES

Self-Efficient Cleaning Services
4731 N Breton Ct SE
Grand Rapids MI 49508-5249
(616) 432-4411
www.selfcleaningservices.com

COMMUNITY ORGANIZATIONS

Gaines Chamber of Commerce
8561 Kalamazoo Ave SE
Caledonia MI 49316-8270
(616) 890-1378
www.cutlerville-gaineschamber.org

Gaines Historical Society
421 68th St SE
Grand Rapids MI 49548
(616) 698-8464

Habitat For Humanity Restore
5701 Division Ave S
Grand Rapids MI 49548-5726
(616) 531-4591
www.habitatkent.org

Love INC of South Kent County
c/o St. Mark Lutheran Church
1934 52nd St. SE
Kentwood, MI 49508
616-228-3492
www.loveincskc.org

Streams of Hope
280 60th St SE
Grand Rapids MI 49508
(616) 272-3634
www.streamsofhope.org



COMPUTER SERVICE/SALES



Sulli Digital
8250 Byron Creek Dr
Byron Center MI 49315-9198
(616) 920-9052
www.sullidigital.com

CONCRETE CONTRACTOR



Kent Companies
130 60th St SW Ste 1
Grand Rapids MI 49548-5703
(616) 534-4909
www.kentcompanies.com

CONSULTANTS

IPV Consulting
8650 Byron Center Ave SW Ste 7
Byron Center MI 49315-9589
(616) 291-0377
www.ipvconsulting.com

CORPORATE BUSINESS

Cutlerville Partners
1317 Terminal Crescent Dr SE
Grand Rapids MI 49503-4855
(616) 452-6048
www.opencorporates.com/
companies/us_mi

COUNSELING

Tyler Higley Counseling
Caledonia MI 49316
(616) 466-4724

COUNTRY CLUBS

Railside Golf Club
2500 76th St SW
Byron Center MI 49315-9479
(616) 878-1140
www.railsidegolf.com

meijer®

1801 Marketplace Dr | Caledonia, MI 49316
p: 616-656-6112



We're here to help.

Come in today for convenient products and services, including:

- Printing & document finishing
- Packing & shipping
- Mailbox services
- Postal products & services
- Notary services
- Shredding services*

*Not theupsstore.com/shredding for full details.

The UPS Store

\$1 OFF SHIPPING
on qualifying packages
\$2 OFF SHIPPING
on qualifying packages
UPS® SHIPPING

Limit one coupon per customer. Not valid with other offers. Restrictions apply. Valid and redeemable only when presented at a participating location. The UPS Store centers are independently owned and operated. © 2019 The UPS Store, Inc.
Offer expires 12/31/20.

The UPS Store

15% OFF
COLOR PRINTS
on 1x10, 4x6, 5x7, 8x10, 11x14, 11x17, 11x22, 11x24, 11x36, 11x48, 11x60, 11x72, 11x84, 11x96, 11x108, 11x120, 11x132, 11x144, 11x156, 11x168, 11x180, 11x192, 11x204, 11x216, 11x228, 11x240, 11x252, 11x264, 11x276, 11x288, 11x300, 11x312, 11x324, 11x336, 11x348, 11x360, 11x372, 11x384, 11x396, 11x408, 11x420, 11x432, 11x444, 11x456, 11x468, 11x480, 11x492, 11x504, 11x516, 11x528, 11x540, 11x552, 11x564, 11x576, 11x588, 11x600, 11x612, 11x624, 11x636, 11x648, 11x660, 11x672, 11x684, 11x696, 11x708, 11x720, 11x732, 11x744, 11x756, 11x768, 11x780, 11x792, 11x804, 11x816, 11x828, 11x840, 11x852, 11x864, 11x876, 11x888, 11x900, 11x912, 11x924, 11x936, 11x948, 11x960, 11x972, 11x984, 11x996, 11x1008, 11x1020, 11x1032, 11x1044, 11x1056, 11x1068, 11x1080, 11x1092, 11x1104, 11x1116, 11x1128, 11x1140, 11x1152, 11x1164, 11x1176, 11x1188, 11x1200, 11x1212, 11x1224, 11x1236, 11x1248, 11x1260, 11x1272, 11x1284, 11x1296, 11x1308, 11x1320, 11x1332, 11x1344, 11x1356, 11x1368, 11x1380, 11x1392, 11x1404, 11x1416, 11x1428, 11x1440, 11x1452, 11x1464, 11x1476, 11x1488, 11x1500, 11x1512, 11x1524, 11x1536, 11x1548, 11x1560, 11x1572, 11x1584, 11x1596, 11x1608, 11x1620, 11x1632, 11x1644, 11x1656, 11x1668, 11x1680, 11x1692, 11x1704, 11x1716, 11x1728, 11x1740, 11x1752, 11x1764, 11x1776, 11x1788, 11x1800, 11x1812, 11x1824, 11x1836, 11x1848, 11x1860, 11x1872, 11x1884, 11x1896, 11x1908, 11x1920, 11x1932, 11x1944, 11x1956, 11x1968, 11x1980, 11x1992, 11x2004, 11x2016, 11x2028, 11x2040, 11x2052, 11x2064, 11x2076, 11x2088, 11x2100, 11x2112, 11x2124, 11x2136, 11x2148, 11x2160, 11x2172, 11x2184, 11x2196, 11x2208, 11x2220, 11x2232, 11x2244, 11x2256, 11x2268, 11x2280, 11x2292, 11x2304, 11x2316, 11x2328, 11x2340, 11x2352, 11x2364, 11x2376, 11x2388, 11x2400, 11x2412, 11x2424, 11x2436, 11x2448, 11x2460, 11x2472, 11x2484, 11x2496, 11x2508, 11x2520, 11x2532, 11x2544, 11x2556, 11x2568, 11x2580, 11x2592, 11x2604, 11x2616, 11x2628, 11x2640, 11x2652, 11x2664, 11x2676, 11x2688, 11x2700, 11x2712, 11x2724, 11x2736, 11x2748, 11x2760, 11x2772, 11x2784, 11x2796, 11x2808, 11x2820, 11x2832, 11x2844, 11x2856, 11x2868, 11x2880, 11x2892, 11x2904, 11x2916, 11x2928, 11x2940, 11x2952, 11x2964, 11x2976, 11x2988, 11x3000, 11x3012, 11x3024, 11x3036, 11x3048, 11x3060, 11x3072, 11x3084, 11x3096, 11x3108, 11x3120, 11x3132, 11x3144, 11x3156, 11x3168, 11x3180, 11x3192, 11x3204, 11x3216, 11x3228, 11x3240, 11x3252, 11x3264, 11x3276, 11x3288, 11x3300, 11x3312, 11x3324, 11x3336, 11x3348, 11x3360, 11x3372, 11x3384, 11x3396, 11x3408, 11x3420, 11x3432, 11x3444, 11x3456, 11x3468, 11x3480, 11x3492, 11x3504, 11x3516, 11x3528, 11x3540, 11x3552, 11x3564, 11x3576, 11x3588, 11x3600, 11x3612, 11x3624, 11x3636, 11x3648, 11x3660, 11x3672, 11x3684, 11x3696, 11x3708, 11x3720, 11x3732, 11x3744, 11x3756, 11x3768, 11x3780, 11x3792, 11x3804, 11x3816, 11x3828, 11x3840, 11x3852, 11x3864, 11x3876, 11x3888, 11x3900, 11x3912, 11x3924, 11x3936, 11x3948, 11x3960, 11x3972, 11x3984, 11x3996, 11x4008, 11x4020, 11x4032, 11x4044, 11x4056, 11x4068, 11x4080, 11x4092, 11x4104, 11x4116, 11x4128, 11x4140, 11x4152, 11x4164, 11x4176, 11x4188, 11x4200, 11x4212, 11x4224, 11x4236, 11x4248, 11x4260, 11x4272, 11x4284, 11x4296, 11x4308, 11x4320, 11x4332, 11x4344, 11x4356, 11x4368, 11x4380, 11x4392, 11x4404, 11x4416, 11x4428, 11x4440, 11x4452, 11x4464, 11x4476, 11x4488, 11x4500, 11x4512, 11x4524, 11x4536, 11x4548, 11x4560, 11x4572, 11x4584, 11x4596, 11x4608, 11x4620, 11x4632, 11x4644, 11x4656, 11x4668, 11x4680, 11x4692, 11x4704, 11x4716, 11x4728, 11x4740, 11x4752, 11x4764, 11x4776, 11x4788, 11x4800, 11x4812, 11x4824, 11x4836, 11x4848, 11x4860, 11x4872, 11x4884, 11x4896, 11x4908, 11x4920, 11x4932, 11x4944, 11x4956, 11x4968, 11x4980, 11x4992, 11x5004, 11x5016, 11x5028, 11x5040, 11x5052, 11x5064, 11x5076, 11x5088, 11x5100, 11x5112, 11x5124, 11x5136, 11x5148, 11x5160, 11x5172, 11x5184, 11x5196, 11x5208, 11x5220, 11x5232, 11x5244, 11x5256, 11x5268, 11x5280, 11x5292, 11x5304, 11x5316, 11x5328, 11x5340, 11x5352, 11x5364, 11x5376, 11x5388, 11x5400, 11x5412, 11x5424, 11x5436, 11x5448, 11x5460, 11x5472, 11x5484, 11x5496, 11x5508, 11x5520, 11x5532, 11x5544, 11x5556, 11x5568, 11x5580, 11x5592, 11x5604, 11x5616, 11x5628, 11x5640, 11x5652, 11x5664, 11x5676, 11x5688, 11x5700, 11x5712, 11x5724, 11x5736, 11x5748, 11x5760, 11x5772, 11x5784, 11x5796, 11x5808, 11x5820, 11x5832, 11x5844, 11x5856, 11x5868, 11x5880, 11x5892, 11x5904, 11x5916, 11x5928, 11x5940, 11x5952, 11x5964, 11x5976, 11x5988, 11x6000, 11x6012, 11x6024, 11x6036, 11x6048, 11x6060, 11x6072, 11x6084, 11x6096, 11x6108, 11x6120, 11x6132, 11x6144, 11x6156, 11x6168, 11x6180, 11x6192, 11x6204, 11x6216, 11x6228, 11x6240, 11x6252, 11x6264, 11x6276, 11x6288, 11x6300, 11x6312, 11x6324, 11x6336, 11x6348, 11x6360, 11x6372, 11x6384, 11x6396, 11x6408, 11x6420, 11x6432, 11x6444, 11x6456, 11x6468, 11x6480, 11x6492, 11x6504, 11x6516, 11x6528, 11x6540, 11x6552, 11x6564, 11x6576, 11x6588, 11x6600, 11x6612, 11x6624, 11x6636, 11x6648, 11x6660, 11x6672, 11x6684, 11x6696, 11x6708, 11x6720, 11x6732, 11x6744, 11x6756, 11x6768, 11x6780, 11x6792, 11x6804, 11x6816, 11x6828, 11x6840, 11x6852, 11x6864, 11x6876, 11x6888, 11x6900, 11x6912, 11x6924, 11x6936, 11x6948, 11x6960, 11x6972, 11x6984, 11x6996, 11x7008, 11x7020, 11x7032, 11x7044, 11x7056, 11x7068, 11x7080, 11x7092, 11x7104, 11x7116, 11x7128, 11x7140, 11x7152, 11x7164, 11x7176, 11x7188, 11x7200, 11x7212, 11x7224, 11x7236, 11x7248, 11x7260, 11x7272, 11x7284, 11x7296, 11x7308, 11x7320, 11x7332, 11x7344, 11x7356, 11x7368, 11x7380, 11x7392, 11x7404, 11x7416, 11x7428, 11x7440, 11x7452, 11x7464, 11x7476, 11x7488, 11x7500, 11x7512, 11x7524, 11x7536, 11x7548, 11x7560, 11x7572, 11x7584, 11x7596, 11x7608, 11x7620, 11x7632, 11x7644, 11x7656, 11x7668, 11x7680, 11x7692, 11x7704, 11x7716, 11x7728, 11x7740, 11x7752, 11x7764, 11x7776, 11x7788, 11x7800, 11x7812, 11x7824, 11x7836, 11x7848, 11x7860, 11x7872, 11x7884, 11x7896, 11x7908, 11x7920, 11x7932, 11x7944, 11x7956, 11x7968, 11x7980, 11x7992, 11x8004, 11x8016, 11x8028, 11x8040, 11x8052, 11x8064, 11x8076, 11x8088, 11x8100, 11x8112, 11x8124, 11x8136, 11x8148, 11x8160, 11x8172, 11x8184, 11x8196, 11x8208, 11x8220, 11x8232, 11x8244, 11x8256, 11x8268, 11x8280, 11x8292, 11x8304, 11x8316, 11x8328, 11x8340, 11x8352, 11x8364, 11x8376, 11x8388, 11x8400, 11x8412, 11x8424, 11x8436, 11x8448, 11x8460, 11x8472, 11x8484, 11x8496, 11x8508, 11x8520, 11x8532, 11x8544, 11x8556, 11x8568, 11x8580, 11x8592, 11x8604, 11x8616, 11x8628, 11x8640, 11x8652, 11x8664, 11x8676, 11x8688, 11x8700, 11x8712, 11x8724, 11x8736, 11x8748, 11x8760, 11x8772, 11x8784, 11x8796, 11x8808, 11x8820, 11x8832, 11x8844, 11x8856, 11x8868, 11x8880, 11x8892, 11x8904, 11x8916, 11x8928, 11x8940, 11x8952, 11x8964, 11x8976, 11x8988, 11x9000, 11x9012, 11x9024, 11x9036, 11x9048, 11x9060, 11x9072, 11x9084, 11x9096, 11x9108, 11x9120, 11x9132, 11x9144, 11x9156, 11x9168, 11x9180, 11x9192, 11x9204, 11x9216, 11x9228, 11x9240, 11x9252, 11x9264, 11x9276, 11x9288, 11x9300, 11x9312, 11x9324, 11x9336, 11x9348, 11x9360, 11x9372, 11x9384, 11x9396, 11x9408, 11x9420, 11x9432, 11x9444, 11x9456, 11x9468, 11x9480, 11x9492, 11x9504, 11x9516, 11x9528, 11x9540, 11x9552, 11x9564, 11x9576, 11x9588, 11x9600, 11x9612, 11x9624, 11x9636, 11x9648, 11x9660, 11x9672, 11x9684, 11x9696, 11x9708, 11x9720, 11x9732, 11x9744, 11x9756, 11x9768, 11x9780, 11x9792, 11x9804, 11x9816, 11x9828, 11x9840, 11x9852, 11x9864, 11x9876, 11x9888, 11x9900, 11x9912, 11x9924, 11x9936, 11x9948, 11x9960, 11x9972, 11x9984, 11x9996, 11x10008, 11x10020, 11x10032, 11x10044, 11x10056, 11x10068, 11x10080, 11x10092, 11x10104, 11x10116, 11x10128, 11x10140, 11x10152, 11x10164, 11x10176, 11x10188, 11x10200, 11x10212, 11x10224, 11x10236, 11x10248, 11x10260, 11x10272, 11x10284, 11x10296, 11x10308, 11x10320, 11x10332, 11x10344, 11x10356, 11x10368, 11x10380, 11x10392, 11x10404, 11x10416, 11x10428, 11x10440, 11x10452, 11x10464, 11x10476, 11x10488, 11x10500, 11x10512, 11x10524, 11x10536, 11x10548, 11x10560, 11x10572, 11x10584, 11x10596, 11x10608, 11x10620, 11x10632, 11x10644, 11x10656, 11x10668, 11x10680, 11x10692, 11x10704, 11x10716, 11x10728, 11x10740, 11x10752, 11x10764, 11x10776, 11x10788, 11x10800, 11x10812, 11x10824, 11x10836, 11x10848, 11x10860, 11x10872, 11x10884, 11x10896, 11x10908, 11x10920, 11x10932, 11x10944, 11x10956, 11x10968, 11x10980, 11x10992, 11x11004, 11x11016, 11x11028, 11x11040, 11x11052, 11x11064, 11x11076, 11x11088, 11x11100, 11x11112, 11x11124, 11x11136, 11x11148, 11x11160, 11x11172, 11x11184, 11x11196, 11x11208, 11x11220, 11x11232, 11x11244, 11x11256, 11x11268, 11x11280, 11x11292, 11x11304, 11x11316, 11x11328, 11x11340, 11x11352, 11x11364, 11x11376, 11x11388, 11x11400, 11x11412, 11x11424, 11x11436, 11x11448, 11x11460, 11x11472, 11x11484, 11x11496, 11x11508, 11x11520, 11x11532, 11x11544, 11x11556, 11x11568, 11x11580, 11x11592, 11x11604, 11x11616, 11x11628, 11x11640, 11x11652, 11x11664, 11x11676, 11x11688, 11x11700, 11x11712, 11x11724,



Great Lakes
Insurance

KINZIE FINANCIAL SERVICES

- Individual Health & Life Insurance
- Medicare & Retirement Income Plans
- Custom Employee Benefits Packages

We are independent agents since 2003 offering plans for Priority Health, Blue Cross, United Healthcare, Humana, Principal Financial & many more.

Call Us! (616) 656-5555

Text Us! (616) 606-5608

Visit Us! Mon-Fri (walk-ins welcome)

3205 68th St. SE, Caledonia

Learn More at www.GLIBrokers.com

RC
RAW CANDI BEAUTY

We at Raw Candi Beauty provide nothing but the best luxury hair extensions, lashes and beauty services

@rawcandi_beauty
@rawcandibeauty
www.rawcandi.shop

Byron Center Public Schools
www.bcpsk12.net

lifedge



Digital
Marketing



Web
Development



Social Media
Management



Branding &
Graphic Design



Studio

info@lifedge.online · 616-730-3065 · lifedge.online



DENTAL

Swan Orthodontics

1723 68th St SE Ste A
Caledonia MI 49316-8374
(616) 698-2323
www.swanortho.com

DISABLED PERSONS EQUIPMENT & SUPPLIES

Clock Mobility

6700 Clay Ave SW
Grand Rapids MI 49548-7836
(616) 698-9400
www.clockmobility.com

EDUCATION

Byron Center Public Schools

8542 Byron Center Ave SW
Byron Center MI 49315-8674
(616) 878-6100
www.bcpsk12.net

Cross Creek Charter Academy

7701 Kalamazoo Ave SE
Byron Center MI 49315-9534
(616) 656-4000
www.crosscreekcharteracademy.org

Kentwood Public Schools

5820 Eastern Ave SE
Grand Rapids MI 49508-6200
(616) 455-4400
www.kentwoodps.org

Legacy Christian School

67 68th St SW
Grand Rapids MI 49548-7111
(616) 455-3860
www.legacyschools.org

Mathnasium

6101 Kalamazoo Ave SE Ste B1
Grand Rapids MI 49508-7886
(616) 541-5150
www.mathnasium.com/kentwood

South Christian High School

7979 Kalamazoo Ave SE
Byron Center MI 49315-9559
(616) 455-3210
www.schs.org

ELECTRIC

Buist Electric

2 84th St SW
Byron Center MI 49315-8660
(616) 878-3315
www.buistelectric.com

DVT Electric, Inc.

5151 Division Ave S
Grand Rapids MI 49548-5603
(616) 538-0039
www.dvtelectricinc.com

ENTERTAINMENT

Master Arts Theatre

75 77th St SW
Grand Rapids MI 49548-7241
(616) 455-1001
www.masterarts.org

ENVIRONMENTAL RECYCLING

Division Metal Recyclers

7800 Division Ave S
Grand Rapids MI 49548-7228
(616) 455-7800
www.divisionmetalrecyclers.com

FINANCIAL & INVESTMENT SERVICES



Van Singel Financial Services

7199 Kalamazoo Ave SE Ste 200
Caledonia MI 49316-7362
(616) 259-1008
www.vansingelfinancial.com

Kapteyn Wealth Partners

6677 Crossings Dr SE Ste 2
Grand Rapids MI 49508-7889
(616) 816-1600
www.kapteynwealth.com

Indicates Strategic Partner

BUSINESS SECTION

FLOORING

Dehaan Tile & Floor Covering

6522 Division Ave S
Grand Rapids MI 49548-7882
(616) 455-3540
www.dehaanfloorcovering.com

CATERING

Distinctive Catering

4945 Division Ave S
Grand Rapids MI 49548-4425
(616) 538-4384
www.distinctivecatering.com

FUNERAL & CREMATION SERVICES

Stroo Funeral Home

1095 68th St SE
Grand Rapids MI 49508-7005
(616) 455-9280
www.stroofuneralhome.com

GOVERNMENT

Byron Township

8085 Byron Center Ave SW
Byron Center MI 49315-8951
(616) 878-0613
www.byrontownship.org

Gaines Charter Township

8555 Kalamazoo Ave SE
Caledonia MI 49316-8270
(616) 698-6640
www.gainestownship.org

GRAPHIC DESIGN

Extreme Graffix

510 68th St SW Ste B
Grand Rapids MI 49548-7104
(616) 455-0388
www.extremegraffix.com



GROCERY STORES



Family Fare - Kentwood
6127 Kalamazoo Ave SE
Grand Rapids MI 49508-7019
(616) 698-2604
www.shopfamilyfare.com



Meijer Gaines Marketplace Store
1801 Marketplace Dr SE
Caledonia MI 49316-8506
(616) 656-6100
www.meijer.com/shop/en/store/199

HOSPITALS & CLINICS



Pine Rest Christian Mental Health Services
300 68th St SE
Grand Rapids MI 49548-6927
(616) 455-5000
www.pinerest.org



HealthBridge Post-Acute Rehabilitation
2060 Health Dr SW
Wyoming MI 49519-9687
(616) 333-1200
www.healthbridgegr.com

HOT TUB STORE

Nordic Products, Inc.
4655 Patterson Ave SE Ste B
Grand Rapids MI 49512-5337
(616) 940-4036
www.nordichottubs.com

HOTELS/MOTELS

Baymont Inn & Suites
8282 Pfeiffer Farms Dr SW
Byron Center MI 49315-8288
(616) 583-9535
www.Baymontinns.com

Pine Lodge Motel
7737 Division Ave S
Grand Rapids MI 49548-7286
(616) 455-9531

INSURANCE

Farm Bureau Insurance - Marc Huisman Agency
1486 44th St SE Ste 202
Grand Rapids MI 49508-4633
(616) 532-3460
www.farmbureauinsurance-mi.com

Great Lakes Insurance & Kinzie Financial Services
3205 68th St SE
Caledonia MI 49316-8425
(616) 656-5555
www.GLIBrokers.com

Integrity Insurance & Investments
3220 68th St SE
Caledonia MI 49316-7466
(616) 698-9339
www.integrityinvestments.com

The Springvloed Agency, Inc.
- Farm Bureau Insurance
6650 Crossings Dr SE Ste D
Grand Rapids MI 49508-7852
(616) 656-2130
www.farmbureauinsurance-mi.com/
Agent/Brent-Springvloed



Warsen Insurance Agency
6700 Division Ave S
Grand Rapids MI 49548-7892
(616) 455-7510
www.warsenins.com

IT SERVICES

Blue Frost It LLC
1680 44th St SE Unit 8155
Grand Rapids MI 49518-5009
(616) 200-8550
www.bluefrostit.com

West Michigan Technology and Design Solutions
8232 Morning Dew Ct SW
Byron Center MI 49315-8105
(616) 485-7600
www.westmichiganit.com

LANDSCAPING

Everett's Landscape Management, Inc.
7884 Eastern Ave SE
Grand Rapids MI 49508-7258
(616) 698-8064
www.everettslandscape.com

Huizinga Lawn Sprinkling
42 Manila St SE
Grand Rapids MI 49548-6903
(616) 455-0240
office@huizingasprinkling.com
www.huizengalawnsprinkling.com

LIBRARY

Kent District Library
421 68th St SE
Grand Rapids MI 49548-6928
(616) 784-2007
www.kdl.org

MAIL SERVICES/SHIPPING

UPS Store
6026 Kalamazoo Ave SE
Grand Rapids MI 49508-7018
(616) 554-2039
www.locations.theupsstore.com/mi/
kentwood/6026-kalamazoo-ave

Indicates Strategic Partner



Grand Rapids South



616-656-6000
grsouthcatering.com
1545 Edgeknoll Dr SE
(M6 & Kalamazoo Ave)



Download our app today

Delivery • Curbside • Drive-thru • Catering
We deliver!

STROO
FUNERAL HOME

DIRECTORS:
Robert K. Stroo, President
Michael A. Vos, Manager
John K. Stroo
Kenneth A. Speyer

PRE-ARRANGEMENT COUNSELOR:
Amy Middendorf

OFFICE ADMINISTRATOR:
Laurie Beute

1095 68th Street SE
Grand Rapids, MI 49508-7005
Phone: 616.455.9280 Fax: 616.455.2035
Email: office@stroofuneralhome.com

www.stroofuneralhome.com



Weirink's RV Center is family owned and operated and has been serving West Michigan since 1954. With well over 200 new and pre-owned travel trailers, fifth wheels, as well as gas and diesel motorhomes on site, we offer something that will meet the needs for you and your family!



TIRED OF PAIN?

WE'VE GOT YOUR BACK!

OFFERING FREE CONSULTATIONS



HULST JEPSEN
PHYSICAL THERAPY

7169 Kalamazoo Ave SE • Caledonia
Phone: 616.827.3010



The Springvloed Agency covers Auto, Home, Life, Business and more.

Call today for a free quote!

(616) 656-2130
6650 Crossings Dr. SE, Ste. D, Grand Rapids
brent.springvloed@fbinsmi.com





Connect from home.

Local, licensed therapists.

We're available to help with depression, anxiety, addiction and more through teletherapy. All ages welcome. Learn more and set up your first appointment at pinerest.org/teletherapy




Lee R. Goodfellow, O.D.
Stacy Crater, O.D.
Paul France, O.D.
Dale VanDyke, O.D.

6680 S. Division Ave., Grand Rapids, MI 49548
616-455-2525 | 616-455-9135 (fax)



MANUFACTURING & PRODUCTION

General Die & Engineering
6500 Clay Ave SW
Grand Rapids MI 49548-7832
(616) 698-6961
www.gendie.com

Werkema Machine Company
7300 Division Ave S
Grand Rapids MI 49548-7136
(616) 455-7650
www.werkemamachine.com

MARKETING

Lifedge
8250 Byron Creek Dr
Byron Center MI 49315-9198
(616) 730-3065
www.lifedge.online

MOBILE HOME SALES

Dutton Mill Village - Sun Communities
6720 W Mill Run SE
Caledonia MI 49316-9163
(616) 698-8610
www.suncommunities.com

Pinegate Mobile Village
7805 Division Ave S
Grand Rapids MI 49548-7287
(616) 455-3420
www.mhvillage.com

Preferred Homes
6132 Division Ave S
Grand Rapids MI 49548-6736
(616) 534-3400
www.preferredhomesmi.com

OPTICAL SERVICES

Cutlerville Eyecare
6680 Division Ave S
Grand Rapids MI 49548-7834
(616) 455-2525
www.cutlervilleeyecare.com

Indicates Strategic Partner

BUSINESS SECTION

ORTHOPEDICS



Thornapple River Orthopedics P.C.
7169 Kalamazoo Ave SE Ste 100
Caledonia MI 49316-8146
(616) 266-9100
www.thornapplriverortho.com

PHYSICAL THERAPY



Hulst Jepsen Physical Therapy
7169 Kalamazoo Ave SE Ste 200
Caledonia MI 49316-8146
(616) 827-3010
www.hjphysicaltherapy.com/locations/gaines-township

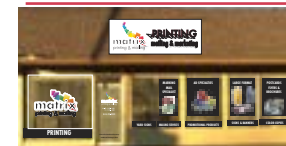
The Center For Physical Rehabilitation

7150 Kalamazoo Ave SE Ste B
Caledonia MI 49316-9197
(616) 333-1800
www.pt-cpr.com

PLUMBING

McDonald Plumbing
7791 Eastern Ave SE
Grand Rapids MI 49508-7218
(616) 698-6771
www.mcdonaldplumbing.com

PRINTING & PRINT MEDIA SERVICES



Matrix Printing & Mailing
6621 Division Ave S
Grand Rapids MI 49548-7805
(616) 455-0303
www.matrixgr.com

REAL ESTATE SERVICES

Re/Max of Grand Rapids - Dwayne Huff
5651 Byron Center Ave SW Ste 200
Wyoming MI 49519-8608
(616) 204-4216
www.huff.remax-michigan.com

RECREATIONAL SALES & SERVICE



Veurink's RV Sales
7144 Division Ave S
Grand Rapids MI 49548-7943
(616) 281-5111
www.veurinksrv.com

RESTAURANTS

84th Street Pub & Grille
8282 Pfeiffer Farms Dr SW
Byron Center MI 49315-8288
(616) 583-1650
www.84thstreetpub.com

Burgers & Bomb Sandwiches
1759 Park Trl NE
Grand Rapids MI 49525-7039
(616) 644-8988

Couture Cakes and Company
1223 Richwood Dr SE
Grand Rapids MI 49508-8931
(616) 309-4081
www.couturecakesandco.com



Chick-Fil-A Grand Rapids South
1545 Edgemoor Dr SE
Grand Rapids MI 49508-7183
(616) 656-6000
www.cfagrsouthcatering.com

Restaurants cont.

Fire Rock Grille

7177 Kalamazoo Ave SE
Caledonia MI 49316-9126
(616) 656-9898
www.FireRockGrille.com

Umi Sushi Grill

454 68th St SW
Grand Rapids MI 49548-7115
(616) 888-8668
www.umisushigrill.com

**Watermark Properties
- D/B/A Stonewater CC**

5510 Cascade Rd SE
Grand Rapids MI 49546-9059
(616) 949-0570
www.stonewatercc.com

SIGNS & BANNERS

Postema Signs & Graphics

7475 Division Ave S
Grand Rapids MI 49548-7137
(616) 455-0260
www.postemasign.com

STORAGE

Creekside Storage Suites

6535 Creekside View Dr SE
Grand Rapids MI 49508-7029
(616) 207-9637
www.creeksidestoragellc.com

TRUCKING

Potter Distributing, Inc

4037 Roger B Chaffee SE
Grand Rapids MI 49548-3441
(616) 531-6860
www.potterdistributing.com

VETERINARIANS

Red Barn Veterinary Clinic LLC

6421 Division Ave S
Grand Rapids MI 49548-7802
(616) 455-4850
www.redbarndclinic.com

**WATER SOFTENERS
AND TREATMENTS**

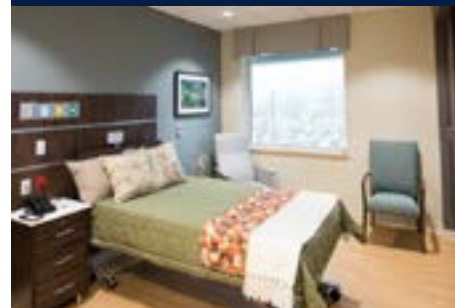
Gordon Water Systems

100 54th St SW
Grand Rapids MI 49548-5795
(616) 776-3800
www.gordonwater.com

Indicates Strategic Partner



Delivering Excellence. Every Life. Every Moment. Every Day.



**The Road to Recovery is
Closer Than You Think!**

Whether you are recovering from an injury, illness or surgery HealthBridge Post-Acute Rehabilitation offers the care you need to get home faster.

We Offer:

- Physical Therapy
- Occupational Therapy
- Speech Therapy
- Cardio-Pulmonary Rehab and Education
- Post-Surgical Orthopedic Rehabilitation
- Complex Wound Care and Therapy
- Complex Respiratory Care
- IV Therapy
- Physiatrist Pain Management Program
- And Other Complex Medical Care

Now Accepting Patients!

2060 Health Dr. SW · Wyoming, MI 49519
(616) 333-1200 · www.healthbridgegr.com



**SPECIAL
OFFER!**

DAN PFEIFFER USED CARS • 616.583.0184

\$250 GAS CARD
WITH EVERY USED CAR PURCHASE!

Cannot be combined with other special offers or coupons or with previously negotiated car deals.

SERVING THE COMMUNITY FOR OVER 50 YEARS • FAMILY OWNED AND OPERATED



84TH STREET PUB & GRILLE
US 131 AT 84TH STREET • EXIT 74 • 616.583.1650
WWW.84THSTPUB.COM


BAYMONT®
INN & SUITES

*Make Your
Reservation Today!*
616.583.9535
www.baymontinns.com

