

CHRISTIAN COUNTY CHAMBER OF COMMERCE

LEGISLATIVE UPDATE



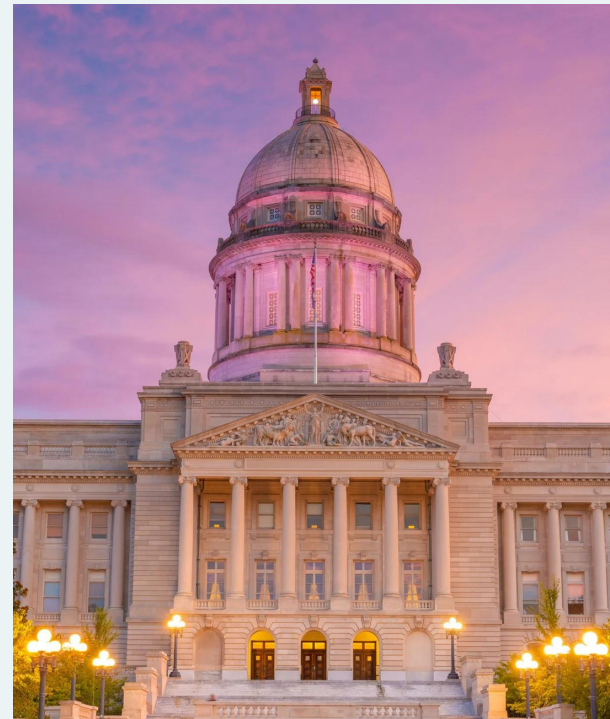
2024 LEGISLATIVE AGENDA PRIORITIES

www.christiancountychamber.com



2024 Legislative Agenda Priorities

This Legislative Agenda is developed by the Christian County Chamber's Governmental Affairs Committee using member input from the legislative survey and priorities within the community vision plan. The agenda is used to communicate the Chamber's positions on issues at the local, state and federal levels of government in order to promote public policy decisions that reflect the priorities of the chamber's members



THE CHRISTIAN COUNTY CHAMBER SUPPORTS POLICIES AND EFFORTS IN THE FOLLOWING AREA:

Education Workforce & Childcare



- Enhance the quality of the educational environment to better prepare students, attract quality educators with competitive compensation and to meet workforce needs.
- Increase investing in early childhood education and pursuing policies to increase access to quality child care allowing more Kentucky parents and guardians to participate in the workforce.
- Incentivize and reduce barriers to employment for people coming out of addiction, treatment or incarceration to help get them back to being productive citizens.



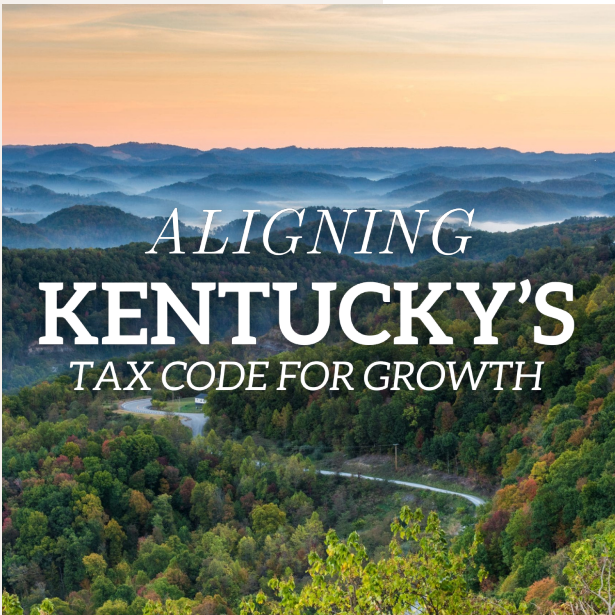
Viable Downtown Hopkinsville

- Enhance downtown Hopkinsville's viability including being appealing to pedestrian traffic, aesthetically attractive and conducive to conduct business.



Housing

- Increase the county's housing stock with greater opportunities for affordable home ownership.
- Create greater efficiencies to reclaim and refurbish abandoned / vacant property



Tax Reform

- Continue phasing out the state individual income tax
- Provide more flexibility tax structures for local governments
- Modernize funding for state transportation infrastructure

Fort Campbell & Attracting Military to the State

- Exempt Tax on 100% of Military Retirement Pay
- Exempt Transfer Tax on Motor Vehicle for Military
- Adopt DOD-priority occupational licensing compacts including the Social Work Compact, Massage Therapy Compact, Emergency Medical Services Compact and Dental and Dental Hygienist Compact.
- Ensure the retention and expansion of Fort Campbell's military missions, capabilities and infrastructure
- Pursue opportunities for defense-related economic development



Economic Development



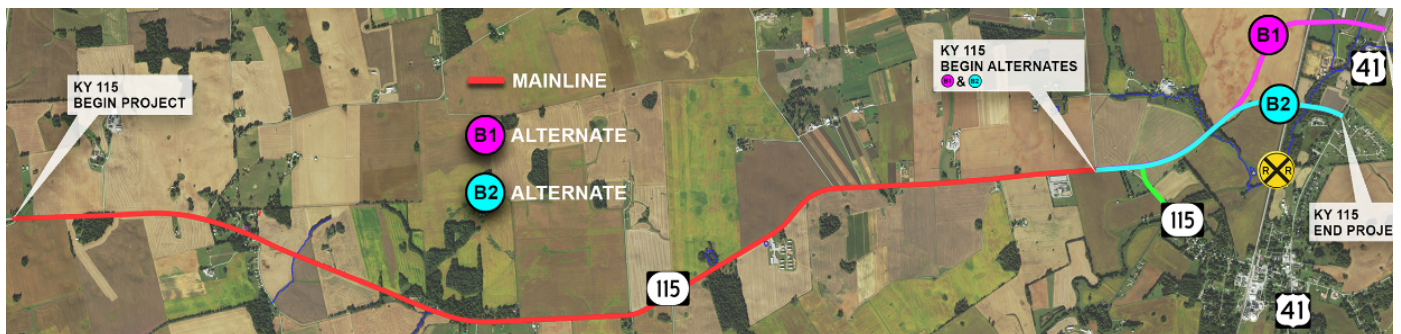
- Create a School of Veterinary Medicine at Murray State University utilizing MSU's Breathitt Veterinary Diagnostic Lab facility in Hopkinsville.
- Reform legal liability retort reducing the legal liability climate and foster more out of state investment.

Roads & Infrastructure Priorities



- I-24 - Expand and widen I-24 from the TN to IL state line to improve safety and meet the increasing traffic patterns associated with the population growth in the region.
-
- COMMERCE PARK II WATER & SEWER DESIGN WORK - Secure funding for the design of expanding water and waste water infrastructure servicing Commerce Park II

KY 115 Corridor



- KY 115 CORRIDOR - Enhance the safety and accommodate the increased traffic flow patterns along the Kentucky 115 corridor from US 41 to the Kentucky-Tennessee state line including a CSX overpass - connector from US 41 to Hwy 115 and upgrades to the I-24 exit 89.



- BREATHITT PARKWAY (I-169) & KY 1682 INTERCHANGE (exit 12) - Reconstruct interchange to meet interstate standards using Design Build to allow the installation of I-169 signs.
- KY 1613 (LOVERS LANE) & HWY 107 - Enhance the safety and accommodate the increased traffic flow along KY 1613 and at the intersection of HWY 107 with the new consolidated high school.



CHRISTIAN COUNTY

Chamber of Commerce



LOCAL ELECTED OFFICIALS

Christian County Government
<https://christiancountky.gov/>

City of Hopkinsville
<https://www.hopkinsvilleky.us>

City of Oak Grove
<https://oakgroveky.org/>

STATE LEGISLATORS

Senator Whitney Westerfield
Capitol Annex, Room 228 Frankfort, KY 40601
502-564-8100 ext. 622
whitney.westerfield@lrc.ky.gov

Rep. Myron Dossett
Capitol Annex, Room 401 Frankfort, KY 40601
502-564-8100 ext. 657
myron.dossett@lrc.ky.gov

Rep. Jason Petrie
Capitol Annex, Room 392 Frankfort, KY 40601
502-564-8100 ext. 618
Jason.petrie@lrc.ky.gov

Rep. Walker Thomas
Capitol Annex, Room 329C Frankfort, KY 40601
502-564-8100 ext. 658
walker.thomas@lrc.ky.gov

Federal LEGISLATORS

US Senator Mitch McConnell
317 Russell Senate Office Bldg. Washington, DC 20510
202-224-2541
www.mcconnell.senate.gov

**Senator McConnell's Field Representative
Morgan Alley**
100 Fountain Ave., Suite 300 Paducah, KY 42001
202-224-2541
morgan_alvey@mcconnell.senate.gov

US Senator Rand Paul
167 Russell Senate Office Bldg. Washington, DC 20510
202-224-4343
www.paul.senate.gov

**Snator Paul's Field Representative
Christina Peterson**
1100 S. Main St. Suite 112 Hopkinsville, KY 42240
270-885-1212
www.paul.senate.gov

US Representative James Comer
2410 Rayburn House Office Bldg. Washington, DC 20515
202-225-3115
www.comer.house.gov

**Congressman Comer's Field Representative
Sandy Simpson**
200 North Main Street, Suite F Tompkinsville, KY 24167
270-487-9509
sandy.simpson@mail.house.gov