

MARCH 19

# THE OUTLOOK



CELEBRATING  
TEN YEARS  
**LFC YOUTH**

**FINE DINING  
WITH CHEF  
KALATHAS**

Helping our members prosper and supporting our community.



GREATER CHAMBERSBURG  
CHAMBER OF COMMERCE

717-264-7101 | [Chambersburg.org](http://Chambersburg.org)



# BOARD OF DIRECTORS

**Kim Crider**

*Optavia - Chair*

**Troy Garman**

*RE/MAX Realty Agency*

*Immediate Past Chair*

**Luke Martin**

*SEK, CPAs & Advisors - Vice Chair*

**Michael J. Connor**

*Walker, Connor & Spang, LLC - Treasurer*

**Sherri H. Stahl**

*Summit Health - Secretary*

**Angela Quigley**

*SEK, CPAs & Advisors - DCI Chair*

**Colby Fry**

*CVR Uniforms*

*Foundation President*

**Eric Foreman**

*Patriot Federal Credit Union*

*CADC Vice President*

**Carlos Perez**

*CPA Wireless Boost Mobile*

**Melanie Furlong**

*SpiriTrust Lutheran Home Care & Hospice*

**Alice Hawbaker**

*LCSi Lehman Construction Services, Inc.*

**Jeff Truhan**

*The Shook Home*

**Mark Durniak**

*Fuddruckers*

**Brad Evans**

*Bartlett Tree Expert Company*

**Angela Lynch**

*Chambersburg Area School District Foundation*

**Patricia Abbott**

*Strickler Insurance Agency*

**Bill Boltz**

*ULTA Beauty*

**Jake Naugle**

*Patriot Federal Credit Union*

**Camilla Rawleigh**

*Wilson College*

**Van Gray**

*GearHouse Brewing Co.*

**Brian Wise**

*BWise Manufacturing, LLC*

# NEW MEMBERS

*The Greater Chambersburg Chamber of Commerce extends a warm welcome to its new members and would also like to congratulate the following members for their anniversaries. Together, we can help everyone prosper and enhance the quality of life in the region.*

**Hotels, Motels, Bed & Breakfasts****Baymont Inn & Suites**

1122 Wayne Ave.

Chambersburg, PA 17202

717-264-1200

**Insurance****Campbell Insurance & Investments, LLC**

Jaime Fagan

759 Stouffer Ave.

Chambersburg, PA 17201

717-261-1933

[www.CampbellInsuranceTeam.com](http://www.CampbellInsuranceTeam.com)

**Rental Facilities/Banquets****Grant Street Loft**

Anne Schoenhofen

227 Grant St.

Chambersburg, PA 17201

717-496-8551

[grantstreetloft@gmail.com](mailto:grantstreetloft@gmail.com)

[www.GrantStreetLoft.com](http://www.GrantStreetLoft.com)

**Garden Center****Klenzing's Garden Center**

Jordan Klenzing

2922 Molly Pitcher Hwy S.

Chambersburg, PA 17202

717-375-6088

[klandllc@gmail.com](mailto:klandllc@gmail.com)

[www.Facebook.com/Klenzings-](https://www.Facebook.com/Klenzings-Garden-Center-246098000915/)

[Garden-Center-246098000915/](https://www.Facebook.com/Klenzings-Garden-Center-246098000915/)

**Automotive Services****Heck's Diesel Tech, LLC**

Austin Heck

2685 Edenville Rd.

Chambersburg, PA 17202

717-504-8681

[hecksdieseltechllc@outlook.com](mailto:hecksdieseltechllc@outlook.com)

[www.HecksDieselTech.com/](http://www.HecksDieselTech.com/)

# MARCH MEMBER MILESTONES

**55 Years**

R. A. Hill, Inc.

SEK, CPAs & Advisors

R. Perry Fence Company

**10 Years**

Erickson Financial

**30 Years**

RE/MAX Realty Agency - Sam Small

**5 Years**

Herbert, Rowland & Grubic, Inc.

Spherion Staffing

Sweetfrog

**20 Years**

The Eagle Construction Company

LA Cameras

Rhodes Grove Camp & Conference

Center

**1 Year**

Americana Souvenirs & Gifts

Herbruck Poultry Ranch, Inc.

Hometown Garage

Lee & Associates of Eastern PA

**15 Years**

A.C.& T., Inc.

N. Nasreen Khan, D.O.

# CHAIR'S MESSAGE

As I write this message, it's been several days since the completion of another successful IceFest. In my last chair message I referenced that "it takes a village" to raise a chair. The phrase is even truer when it comes to pulling off the largest ice festival in the state of Pennsylvania; it takes a village to raise an IceFest!

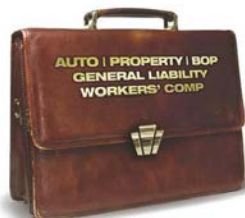


Our community pulls together in a way that few do to in order to manage the massive amount of events, attendees, volunteers, sponsors, contest participants, vendors and various logistical matters that invariably occur before and during the event itself. You may not know that while the Chamber and our DCI affiliate are certainly involved, much of the work is done by other community entities including **Downtown Business Council** and **Council for the Arts**. The "village" of volunteers needed to pull off every event includes the aforementioned folks, plus several service organizations, students from **Chambersburg Area Senior High School**, churches, local leaders, business sponsors and many others.

Did you know that the planning for the 2020 IceFest is already underway? Get involved! Do you have an area of expertise that may benefit an event or a logistical issue? Raise your hand! Do you want to sponsor an event that dovetails what you do as a business? Now's the time to put in your request! Maybe cold weather events aren't your favorite? The Chamber is always on the lookout for committee members for events like our signature (and super FUN!) Sip & Savor event being held on April 13 or for our Annual Golf Tournament in June. The Chamber tagline is "it's all about community," and that is apparent as we depend on so many individuals and businesses to help make community events successful throughout the year. Thank you all for everything that you do!

Kim Crider  
Certified Health Coach, Optavia  
Board Chair, Greater Chambersburg Chamber of Commerce

**Affordable business insurance  
featuring enhanced coverages — plus  
the opportunity to earn a dividend.**



Learn how, as a member of the Greater Chambersburg Chamber, you could earn an all-lines\* dividend by placing your insurance with Penn National Insurance.

*\*except bonds and umbrella*



**PENN NATIONAL  
INSURANCE**  
*Feel Secure®*

[www.pennnationalinsurance.com](http://www.pennnationalinsurance.com)

**Strickler  
Agency, Inc.**

800-503-8908 • [www.stricklerins.com](http://www.stricklerins.com)

Call this member agency today!

## CHAMBER TEAM

### Stephen Christian

President of Greater Chambersburg  
Chamber of Commerce  
Executive Director of Chambersburg  
Area Development Corp.  
[schristian@chambersburg.org](mailto:schristian@chambersburg.org)

### Maryliz Toohig

Finance & Human Resources Director  
[mtoohig@chambersburg.org](mailto:mtoohig@chambersburg.org)

### Joel Black

Membership Director  
[jblack@chambersburg.org](mailto:jblack@chambersburg.org)

### Angela Schaeffer

Director of Operations &  
Assistant to the President  
[aschaeffer@chambersburg.org](mailto:aschaeffer@chambersburg.org)

### Lark Kennedy

Communications & Marketing Manager  
Civil War Seminars Coordinator  
[lkennedy@chambersburg.org](mailto:lkennedy@chambersburg.org)

### Stacy Guyer

Accounting Assistant  
[sguyer@chambersburg.org](mailto:sguyer@chambersburg.org)

### Sue Black

Customer Service Representative &  
Heritage Center Coordinator  
[receptionist@chambersburg.org](mailto:receptionist@chambersburg.org)

### Laiton Suders

Administrative Assistant  
[lsuders@chambersburg.org](mailto:lsuders@chambersburg.org)

### Virginia Harriger

Executive Director of Greater Chambersburg  
Chamber Foundation  
[gharriger@chambersburg.org](mailto:gharriger@chambersburg.org)

### Sam Thrush

President of Downtown Chambersburg Inc.  
[sthrush@chambersburg.org](mailto:sthrush@chambersburg.org)

### Our Mission:

We exist to help our members prosper and to enhance the quality of life in the Chambersburg area.





# AWARDS BREAKFAST

THURSDAY, APRIL 4 FROM 7-9 A.M.  
Chambersburg Country Club, 3646 Scotland Rd.

## PROGRAM HIGHLIGHTS:

Honoring award recipients for their leadership, innovation,  
volunteerism and more.

## KEYNOTE ADDRESS:

Tom O'Connor, president of Leg Up Farm, will discuss the vision behind this nonprofit therapy center that will break ground in Guilford Township and open in 2020.

## RSVP:

\$25 for members, \$30 for non-members  
Register [Chambersburg.org/Events](http://Chambersburg.org/Events) or 717-264-7101

**Table Sponsorships (\$300) & Patron Sponsorships (\$75) available.**

**SEE REVERSE FOR DETAILS.**

GRAND SPONSOR:

**M&T Bank**

HOSTED BY:



GREATER CHAMBERSBURG  
CHAMBER OF COMMERCE



**Date:** Thursday, April 4, 2019**Location:** Chambersburg Country Club**Projected Attendance:** 225

**About the event:** The Chamber will honor several of its members for their accomplishments in 2018 at the Annual Awards Breakfast on April 4 from 7 to 9 a.m. The breakfast will feature a presentation of awards including the international ATHENA Leadership Award as well as other awards that recognize members for their property improvements, innovation, volunteerism and more. The breakfast will also feature a guest speaker.

**Contact:** Lark Kennedy, communications manager, 717-264-7101 ext. 206, [lkennedy@chambersburg.org](mailto:lkennedy@chambersburg.org)

**Grand Sponsor - \$1,500 – M&T Bank first right of refusal** - Sponsor will receive the following benefits:

- Preferred seating for a table of 8
- Opportunity for a representative to speak at the breakfast about your business for a few minutes
- Logo featured on the event webpage and on all event promotional materials
- Logo featured in the program and presentation
- A full page ad in the breakfast program
- Opportunity to set up a promotional table at the entrance of the event in the registration area
- Opportunity to
- Mention during
- Company name in media releases about the event
- Logo featured in newsletter article

**ATHENA Leadership Award Sponsor - \$750 - F&M Trust and Jennings Chevrolet have first right of refusal**

Sponsor will receive the following benefits:

- Opportunity for a representative to co-present the award and make a few remarks
- Logo featured on event webpage
- Logo featured on event promotional materials as space allows (company name listed when logo is not included)
- Half page ad in the event program
- Company name featured in the program
- Logo featured on a PowerPoint slide at the event
- Mention during the welcome as the ATHENA Award Sponsor
- Logo featured in newsletter article

**Table Sponsor - \$300** - Sponsor will receive the following benefits:

- Preferred seating for a table of 8
- Company name featured on the event webpage
- Company name listed on event promotional materials as space allows
- Company name featured in the program
- Logo featured on a PowerPoint slide at the event
- Mention during the welcome as a table sponsor
- Company name listed in newsletter article

**Patron Sponsor - \$75** - Sponsor will receive the following benefits:

- Preferred seating for 2
- Company name listed on the event webpage
- Company name listed in the program
- Company name listed on a PowerPoint slide
- Company name listed in newsletter article

**Yes, I would like to sponsor the 2019 Annual Awards Breakfast**

Company Name (as you want it to appear in listings): \_\_\_\_\_

Contact Name: \_\_\_\_\_ Phone: \_\_\_\_\_

Email: \_\_\_\_\_ Sponsorship Amount: \_\_\_\_\_

*I understand that the submission of this form confirms commitment from the company above for this sponsorship.*

*Sponsorship payment must be processed before execution of benefits.*

**Payment Method (circle):** Cash/Check Invoice Credit Card #: \_\_\_\_\_

Signature: \_\_\_\_\_ EXP: \_\_\_\_\_ CVV: \_\_\_\_\_

Return form to Lark Kennedy, communications manager: Mail to Greater Chambersburg Chamber of Commerce, Attn: Lark Kennedy, 100 Lincoln Way East, Suite A, Chambersburg, PA 17201; or email to [lkennedy@chambersburg.org](mailto:lkennedy@chambersburg.org); or fax to 717-267-0399.

# FINE DINING WITH CHEF KALATHAS



*Chef Mike Kalathas with his wife Laurie and their two daughters.*

Each year, business leaders and community members are invited to attend an exquisite, formal evening at **The Orchards** featuring a decadent, four-course food and wine pairing prepared by Chef Mike Kalathas. Guests will also enjoy live & silent auctions, games of chance, musical entertainment and networking on April 13.

Chef Kalathas is the owner of The Orchards, a high-end restaurant at 1580 Orchard Dr. He is a graduate of the Culinary Institute of America and has perfected the art of cooking in New York City, Nantucket, California, France and Greece to bring the very best in culinary creations to Chambersburg.

More than 100 guests will enjoy a four-course food and wine pairing during the 6th Annual Sip & Savor: Fire and Ice fundraiser. Attendees will sample food prepared by Chef Kalathas paired with local wines from **Jan Zell Wines** and **Adams County Winery**.

"I'm excited to feature so many unique dishes at this fundraising event," said Chef Kalathas. "I believe everyone in attendance will love the culinary experience at Sip & Savor. When you pair food with wine something happens in your mouth that changes the way both taste. We'll talk about each course and educate our guests about why we paired particular wines with different foods."

This event will showcase food as art and food as science while featuring an elegant atmosphere of lights and mirrors starting at 5:30 p.m. Guests will enjoy live entertainment, auctions, networking, games, prizes and more. The live and silent auctions will include locally-made gifts, vacation packages, tickets to sporting events and more!



*Photos of Sip & Savor: For Your Eyes Only held in April 2018.*

Early Bird tickets to Sip & Savor are \$85 through March 8 and \$95 per person through April 1. Complimentary wine will be available throughout the evening. For more information or to purchase tickets, visit [Chambersburg.org/Events](http://Chambersburg.org/Events).

Sponsor opportunities are available for businesses seeking to increase their business exposure to community and business leaders. Two exclusive sponsorships are available including the Wine Sponsor for \$2,000 that includes a table for eight and the Live Auction Sponsor for \$1,000 that also includes a table for eight. Other sponsorships include Benefactor for \$500 Patron and for \$250; both include preferred seating at the event.

Details about sponsor benefits are available at [Chambersburg.org/Events](http://Chambersburg.org/Events) or contact Joel Black at 717-264-7101 ext. 202 or [jblack@chambersburg.org](mailto:jblack@chambersburg.org).

Grand Sponsor:



Heads or Tails Sponsor



Silent Auction Sponsor



Entertainment Sponsor



Benefactor Sponsors: LCSi Lehman Construction Services, Inc.  
Conewago Enterprises, Inc.

Patron Sponsors: Bartlett Tree Experts, Newcomer Associates, Patriot Federal Credit Union, People Ready, Valley Agency



# Chamber Members Recognized

The Chamber will honor several of its members for their accomplishments in 2018 at the Annual Awards Breakfast presented by **M&T Bank** on Thursday, April 4 from 7 to 9 a.m. at the Chambersburg Country Club, 3646 Scotland Road. Honors include the international ATHENA Leadership Award and recognizing members for their property improvements, innovation, volunteerism and more.

Our featured speaker, Tom O'Connor, president of Leg Up Farm, will speak following the awards presentation. Tom plans to discuss more about Leg Up Farm, which is a nonprofit therapy center that will provide treatment for children with special needs. The Franklin County facility in Guilford Township is expected to break ground this year and open in late 2020. It will be designed to specifically treat children up to the age of 21 with developmental

delays and disabilities, such as autism. Donations to help fund the project have been given by **Brechbill & Helman Co., Inc., Dennis E. Black Engineering, Inc., Triad Engineering, Inc.** and others.

Sponsorships for the breakfast are available! Table sponsorships are \$300 (includes preferred seating for a table of eight) and Patron sponsorships are \$75 (includes preferred seating for two). Individuals may purchase tickets for \$25 for members and \$30 for non-members.

Register early before the event sells out! Learn more at [Chambersburg.org/Events](http://Chambersburg.org/Events) or call 717-264-7101.

Registration deadline is 9 a.m. on Monday, April 1.  
No-shows will be billed.

Grand Sponsor:

**M&T Bank**

## Upcoming Lunch & Learn

Join us on March 28 for a Lunch & Learn hosted by **Penn State Mont Alto!** From 11:30 a.m. to 1 p.m., enjoy lunch courtesy of **Fuddruckers** and an educational discussion on the topic of "Leadership Accountability." Leadership accountability gives you the tools to empower your team to Step up to the Plate™ and get the job done before something goes wrong. Tom Blaisse will speak about the four steps of leadership accountability:

- First Base: Knowing About It – which requires open and honest communication, feedback, and a willingness to hear the things that we don't want to hear.
- Second Base: Caring About It – taking personal ownership for your own successes and failures; acknowledging your involvement and identifying the

consequences of our behavior.

- Third Base: Figuring It Out – by constantly asking, regardless of circumstances, "What More Can I (We) Do?"
- Home Base: Making It Happen – which demands accurate implementation; effective time management and relentless follow through.

Register now at [Chambersburg.org/Events](http://Chambersburg.org/Events) or 717-264-7101. Lunch & Learns are free to attend, but advanced registration is required as space is limited. No-shows and cancellations less than 48 hours in advance will be billed \$10.



## Business Directory & Community Profile

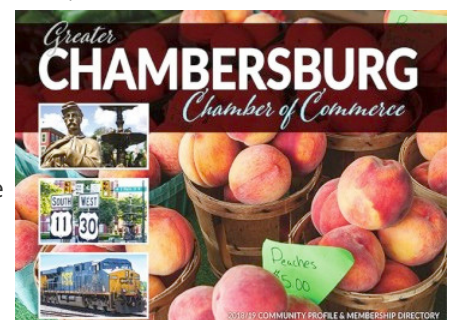
We are pleased to partner with **Centre Publications** on the 2019/2020 Business Directory and Community Profile available in July 2019! Representatives from Centre are meeting with members to discuss advertising opportunities. This is one of the most popular publications in our community as it serves as a resource for businesses, residents and visitors.

The publication utilizes a unique design that features a fresh, modern look with a significant visual impact. Some of the popular features include a dynamic layout for engaging photos, listings by industry category, horizontal format for easy-to-read content and an optimized digital layout for tablets and mobile devices. Advertisers will also have the opportunity to link their ads to their website in the online version.

All Chamber members are included in the alphabetical and

categorical listings in the directory. The publication is distributed to Chamber members as well as area hotels, campgrounds, visitors centers and high-traffic areas.

To view the current version, please visit the homepage of [Chambersburg.org](http://Chambersburg.org). Advertisers will have a range of ad sizes to choose from, with Centre Publications offering free design and photography services. For information about advertisements, call 1-800-200-5375. The Business Directory will debut the third week of July during ChambersFest.



# Personalize Your Business Lending

Lending Solutions Built for Your Business

## Our Business Lending Solutions Offer

No Pre-Payment Penalties | Minimal Fees | Local Decision-Making

### Commercial Real Estate

- Fixed rates up to 10 years
- Amortization up to 25 years

### Residential Investment Real Estate (1-4 Units)

- Fully amortizing fixed rates up to 15 years
- 7-year fixed rate balloon amortized for 30 years

### Credit Lines and Term Loans

- Equipment financing
- Commercial vehicle loans
- Revolving lines of credit

### Business Credit Cards

- No annual fee\*

**Learn More:** Please consult a Business Loan Officer below or drop by any of our convenient branches. Visit [patriotfcu.org](http://patriotfcu.org) for more information about membership eligibility.



#### Karen Boyer

Business Loan Officer  
[KBoyer@patriotfcu.org](mailto:KBoyer@patriotfcu.org)  
717-709-2513



#### Eric Foreman

SVP of Business Lending  
[EForeman@patriotfcu.org](mailto:EForeman@patriotfcu.org)  
717-709-2514

**About Us:** With assets in excess of \$650 million, Patriot Federal Credit Union is a member-owned financial institution, with nine branch locations in the Waynesboro (PA), Chambersburg (PA), and Hagerstown (MD) areas, serving more than 67,000 members.

\*No annual fees, but there is a foreign transaction fee of 1.00% of each transaction in U.S. dollars. Fee effective as of 2/1/19 and may change anytime.

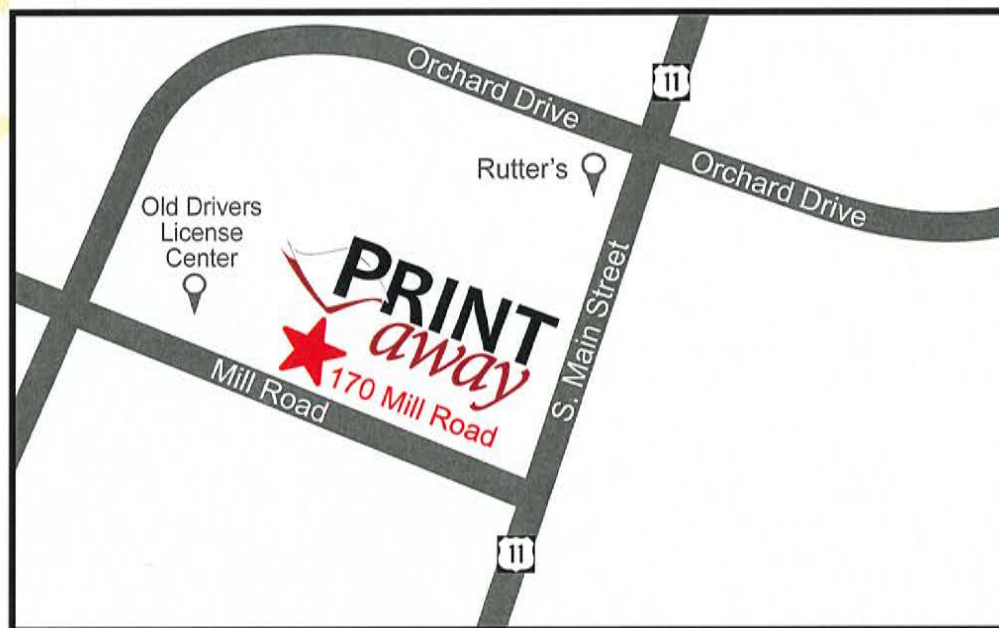




# *We're So Excited!*

## **WE ARE MOVING TO A NEW LOCATION IN MARCH!**

**170 MILL ROAD • CHAMBERSBURG, PA 17201**



We will be transitioning to our new location in mid-March. Come visit our new facility on **170 Mill Road, Chambersburg, PA**. We are excited to grow and expand our business, but will never forget our downtown roots! Printaway will still offer the same great services including **Graphic Design, Printing, Bindery, Finishing, and More!** Let us bring your ideas to life!

*Did you know we offer **FREE** delivery service?  
Call us for more details!*

**PRINT***away*  
YOUR CREATIVE PRINTING PARTNER

717.263.1839  
[www.printawayinc.com](http://www.printawayinc.com)

# TRENDING NEWS



**F&M Trust** recently committed \$50,000 to Menno Haven as part of Menno Haven's capital campaign to fund its five-year expansion plan known as "Project GENESIS." The \$76.5 million construction project includes creating a new rehabilitation center, replacing the original 1964 nursing home, adding memory care houses, building a new resident-life center and more.



Welcome **Klenzing's Garden Center** to the Chamber! We celebrated their business with a Ribbon Cutting Ceremony at 2922 Molly Pitcher Highway in Chambersburg. Klenzing's is a seasonal garden center that has everything from Easter flowers, bedding and vegetable plants to mums, pumpkins and Christmas trees. They offer deliveries, hanging baskets and a gift shop. Learn more about Klenzing's by visiting them on Facebook or place an order at 717-375-6088.



Congratulations to **Jiffy Lube** on Orchard Drive; we recently celebrated its new ownership with a Ribbon Cutting! Bob Houck, Jiffy Lube's new owner, is looking forward to leading the business into the new year with his extensive knowledge and focus on customer satisfaction. They offer a wide variety of services for your vehicle including state inspections without an appointment. Stop by at 1250 Orchard Drive or give them a call at 717-251-3918.



Special thanks to all who stopped by our Mixer hosted by **HCR ManorCare**. We enjoyed delicious food, beverages, door prizes and tours of the facility. Please mark your calendars for this month's mixer on March 19 (details on the back page).



# MEMBER SPOTLIGHTS

## TOTEM POLE PLAYHOUSE

9555 Golf Course Rd. Fayetteville | 717-352-2164  
smcmurtray@totempoleplayhouse.org | TotemPolePlayhouse.org

**Totem Pole Playhouse** began its life in a small converted auto shop in 1950 and has gone on to become one of the best known and highly-regarded summer theatres in the United States. Totem Pole's legacy extends to the pinnacle of almost every facet of the entertainment industry.

Founding Artistic Director Karl Genus ran the playhouse with his wife Muriel Benson from 1951-1953. Genus went on to become a pioneer in the television industry and was one of the founding members of the Directors Guild of America.

In 1953, William H. (Bill) Putch, a graduate of Carnegie Mellon University, was hired as the new Artistic Director. "Putch" as he was affectionately known, ran the playhouse for 30 years until his sudden death in November of 1983.

In 1985, Carl Schurr and Wil Love took over as producing artistic director and associate artistic director, respectively. During their tenure Totem Pole transitioned to a not-for-profit corporation. Ray Ficca, another resident company member served as the artistic director from 2008 through the 2013 season. In November of 2013, Rowan Joseph, became the first producing artistic director since 1953 to be recruited from outside the playhouse's resident company. He remains with the theatre at present.

Totem Pole will celebrate its 70th anniversary in 2020. Discover this amazing summer theatre in your backyard today!



## MADISON SETTLEMENT SERVICES - CHAMBERSBURG, LLC

946 Lincoln Way E., Chambersburg | 717-264-4534  
chbgteam@madisonsettlements.com | MadisonChambersburg.com

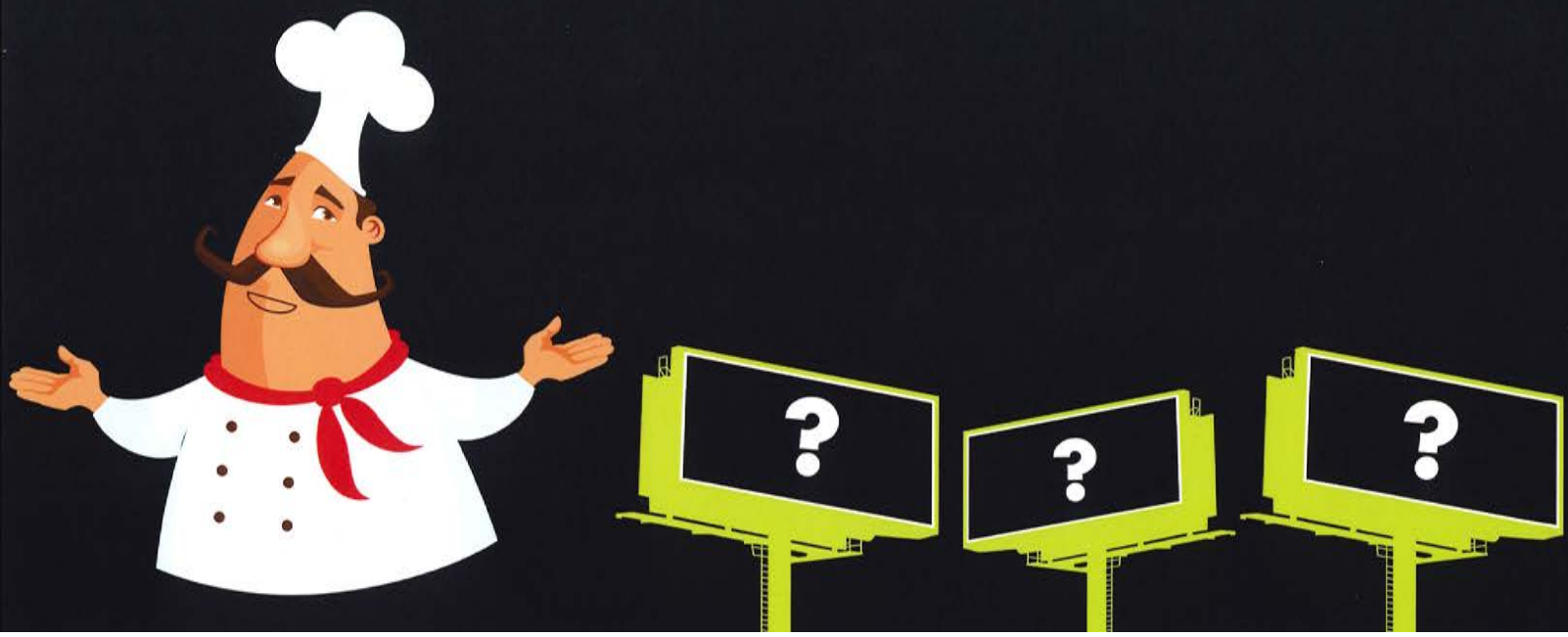
**Madison Settlement Services - Chambersburg, LLC** has been serving the needs of buyers, sellers, lenders and real estate agents since 2005. We are conveniently located at 946 Lincoln Way East in Chambersburg. We have the experience and integrity for a smooth settlement with prior experience of over 36 years in the settlement business.

We will travel for settlements outside our office and will handle closings after 5 p.m. We are always on top of the latest technology including cybersecurity. Give us a try and you will see why we go above and beyond for all your real estate needs! Contact us at MadisonChambersburg.com or call 717-264-4534.



# “WILL BILLBOARDS WORK FOR MY BUSINESS?”

WATCH THE **You Tube** VIDEO WITH THIS TITLE!





# QuickBooks® Step-by-Step Training

## Manual Provided



Dates: April 17, 2019  
May 15, 2019

Location: 720 Norland Avenue  
Chambersburg, PA 17201

Time: 9:00AM – 12:00PM



Scan QR code with  
mobile device for more info.

### 4 Easy Ways to Register Now!

Call: 800-555-9510 or 717-267-2100

Fax Completed Registration: 717-267-1464

On-Line: [www.schultheisscpa.com](http://www.schultheisscpa.com) – click on the resources link

Mail Below Registration: Schultheiss & Associates  
720 Norland Avenue  
Chambersburg, PA 17201

### Is Your Office Making These 21 Critical Mistakes?

- 3 QuickBooks® errors that hurt cash flow in your office.
- 7 Mistakes to avoid in “costing” and why they hurt you.
- 5 Ways to reduce payroll headaches - the one best fix.
- 3 Reports that will stop wasted expenses and overhead.
- 3 Critical errors in setting up your chart of accounts.

### Who Should Attend QuickBooks® Training?

- Spouses who help with the books on a part-time basis.
- Business owners who want to avoid mistakes and improve cash flow.
- Partners looking for long-term answers to accounting problems.
- Bookkeepers who need a better understanding of QuickBooks®.
- First-time users just new to QuickBooks® software.
- Seasoned users who want to take advantage of the advanced features of QuickBooks®.

Course: \$129 per person. \$100 per person if two or more attendees from same company.  
(includes continental breakfast)

Name: \_\_\_\_\_

Company Name: \_\_\_\_\_

Address: \_\_\_\_\_

City: \_\_\_\_\_ State: \_\_\_\_\_ Zip: \_\_\_\_\_

Phone: \_\_\_\_\_

E-Mail: \_\_\_\_\_

Additional Registrants: 1. \_\_\_\_\_

2. \_\_\_\_\_



Payments Accepted: Check ♦ Cash ♦ Mastercard ♦ Visa



Visit our Facebook page – [www.facebook.com/schultheisscpa.com](http://www.facebook.com/schultheisscpa.com)



# JOIN THE FRANKLIN COUNTY COMMUNITY FOUNDATION AT THE ORCHARDS

10% of all dinner purchases (*food and beverages apply*) will directly benefit the Franklin County Community Fund, which provides grants to charitable organizations serving Franklin County.



*Alone, we have ideas.*

**TOGETHER**

*we take action.*

**Support your community now and forever.** The Franklin County Community Fund is a permanently endowed fund to which nonprofit organizations can apply each year for grant funding. Applications are reviewed by FCCF's advisory committee yearly. In 2018, 15 nonprofits received \$74,976. The larger the fund grows, the more grants can be given.



FRANKLIN COUNTY  
COMMUNITY  
FOUNDATION

March 12-16, 2019  
The Orchards Restaurant  
1580 Orchard Drive, Chambersburg, PA 17201





# FRANKLIN COUNTY COMMUNITY FOUNDATION

## REPORT CARD 2018

### EDUCATE

SCHOLARSHIP OPPORTUNITIES	13
STUDENTS AWARDED	17
DOLLARS AWARDED	\$57,199
DOLLARS MATCHED FOR 2018*	\$10,362

*\*TFEC is one of 37 partners in the Commonwealth of PA with the Path Program. This opportunity allows eligible students to be nominated for a dollar-for-dollar match of up to \$2,500.*

### INVEST

GRANT OPPORTUNITIES	1
GRANTS AWARDED	15
DOLLARS AWARDED	\$74,976

### SERVE

FRANKLIN COUNTY COMMUNITY FOUNDATION (FCCF) INSPIRES GIVING BY PARTNERING WITH DONORS TO ACHIEVE THEIR CHARITABLE GOALS & STRENGTHENS FRANKLIN COUNTY BY INVESTING IN IT NOW AND FOR FUTURE GENERATIONS. FCCF SUPPORTS INITIATIVES, PROGRAMS & LEARNING EXPERIENCES THAT STRENGTHEN CONNECTIONS TO:

- ✓ Arts & Culture
- ✓ Community Development
- ✓ Education
- ✓ Environment
- ✓ Health & Human Services

TO LEARN MORE ABOUT HOW YOU CAN PARTNER AND SUPPORT OUR WORK TO IMPACT FRANKLIN COUNTY NOW AND FOREVER, CONTACT US AT: 717.236.5040; INFO@TFEC.ORG; PO BOX 678, HARRISBURG, PA 17108-0678; OR VISIT US: 200 N 3RD ST., 8TH FL HARRISBURG, PA 17101

### SCHOLARSHIPS OFFERED

Beistle Company Scholarship  
Waynesboro Community Concert Association's Joseph Bowers Scholarship  
Chambersburg Fannett-Metal School District  
Chambersburg High School Class of 1963  
Henry and Janet Guarriello Scholarship  
Gordon B. and Josephine Hewlett Memorial Scholarship  
James G. Hewlett Memorial Scholarship Fund  
Dr. and Mrs. Charles M. Markle Scholarship  
Keith A. Schaeffer Memorial Scholarship  
J. Ward Sleichter and Frances F. Sleichter Memorial Scholarship  
Norman & Lois Sollenberger Scholarship  
Soroptimist International of Chambersburg  
Mabel M. Witmer Scholarship

### ORGANIZATIONS SERVED

Alexander Hamilton Memorial Free Library  
Antietam Humane Society  
Capitol Theatre Foundation  
Children Aid Society - Southern PA District Church of the Brethren  
Cumberland Valley Animal Shelter  
Diaper Depot at Central  
Employment Skills Center  
Franklin County Legal Services  
PennCares Support Services  
Presbyterian Senior Living: Quincy Village  
Ronald McDonald House Charities of Central PA  
The Boys and Girls Club of Chambersburg and Shippensburg  
The Nicodemus Center for Ceramic Studies  
Waynesboro Community & Human Services  
Waynesboro Community Concert Association

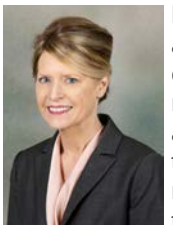
**Wilson College** will be able to digitize its archived collection of print editions of its student newspaper, The Billboard, thanks to a \$6,000 grant from the Council of Independent Colleges (CIC). Digitizing Wilson's collection of student newspapers enhances its value as a historical record by making it searchable, which means the wealth of information contained within newspapers will be easier to tap by anyone researching a variety of topics. The timetable for completing the digitization project and details about how the collection will be accessed off campus will be announced in the coming months.



**Schaedler Yesco Distribution, Inc.** is proud to announce the appointment of Farrah Mittel as president of the company. Mittel has been with Schaedler Yesco for over 12 years and most recently served as regional vice president of its east region. She has been a member of the executive management team for several years. The company has experienced strong and steady growth over the last 15 years with locations throughout the state of Pennsylvania and expansion of services including energy-focused lighting and controls design, industrial automation solutions and data communications systems to name a few.



**Herbert, Rowland & Grubic, Inc. (HRG)** is pleased to announce that Josh Fox, P.E., has been promoted to practice area leader for the firm's Water and Wastewater Group. He will have four areas of primary responsibility: vision and strategy, professional development of staff, project delivery and business development. As the leader of the Water and Wastewater Group, he will translate technical and regulatory trends into a coherent strategy for meeting the needs of public and private sector utilities.



**F&M Trust** has appointed Susan Rosenberg as head of its Investment & Trust Services department. In her new role, Rosenberg is responsible for managing the Investment and Trust Services department, ensuring the department's compliance with regulatory requirements and supervising a team of 31 professionals.

An exhibition of artwork created by members of the **Wilson College** staff and faculty, which is free and open to the public, will run through March 8. The exhibition - a mix of serious and playful explorations in creativity - is a diverse show of traditional and nontraditional work, including painting, drawing, photography, ceramics and quilting. For more information, contact Professor of Fine Arts Philip Lindsey at 717-264-2783 or philip.lindsey@wilson.edu.

**Spiritrust Lutheran Home Care and Hospice** recently presented its 2018 Karen A. Rohaly Award to Deborah

Giselman, RN, hospice nurse in the agency's Franklin County, PA service area. Giselman has been with the agency for three years. She was chosen because of her nominations' characterization of her strength, confidence, excellent clinical skills and dedication. Spiritrust Lutheran Home Care & Hospice provides home health care, home health telemonitoring, palliative care, hospice and in-home support services. The agency serves south central through northeastern Pennsylvania and northern Maryland.

When **Wilson College** expanded its teacher certification program last fall to include an online-only option, it offered a limited number of Pennsylvania teacher certifications, including all secondary (7-12), as well as Spanish and business certifications. Now, based on current enrollment and inquiries, the college has expanded its offerings. Starting immediately, students can enroll and pursue certifications in early childhood pre-K-4, middle level 4-8 and health and physical education. In addition, Wilson is offering dual certification in pre-K-4, middle level, secondary and special education. For more information about Wilson's Teacher Certification Pathways program, including the online-only option, visit [Wilson.edu/TCP](http://Wilson.edu/TCP).

**The Foundry** will host an exhibition of works by **Wilson College** studio art students at its 100 S. Main St. gallery space in downtown Chambersburg. The show will run through March 10; the exhibition is free and open to the public. This exhibition is the third in a series of exhibits held as part of Wilson's partnership with The Foundry, which began in 2016. Through the partnership, Foundry artists will have the opportunity to exhibit their artwork at Wilson in fall 2019. For additional information, contact Professor of Art Philip Lindsey at 717-264-2783 or philip.lindsey@wilson.edu, or The Foundry at 717-261-0706 or [info@foundryartscoop.com](mailto:info@foundryartscoop.com).



Local runners from a holiday-themed fun run, hosted by **Summit Health** will help steer local services at a therapeutic riding center. The Christmas Cash Dash raised more than \$5,000, and the proceeds have been donated

to the Franklin County 4-H Therapeutic Riding Center, Chambersburg. The riding center has served Franklin County for more than 36 years, offering advantageous horsemanship services for riders of all ages.

The **Franklin County Historical Society's** March meeting will take place on Thursday, March 28 at 2 p.m. at the Grove Family Library. The speaker will be Director Ann Hull and her topic will be: "The Suffragette Movement and Local Connections." This event is free and open to the public. For information call 717-264-1667.



# IMPORTANT. ENGAGING.

HAVE NEWS TO SHARE?  
EMAIL LAITON AT  
LSUDERS@CHAMBERSBURG.ORG



Jennifer Connolly of **Rotz & Stonesifer Financial Services, LLC**, headquartered in Chambersburg, Pennsylvania, was awarded the Impact Award at the 2018 1st Global National Conference. The Impact Award recognizes a wealth management assistant who has taken on a greater leadership role in his or her firm that directly resulted in the acquisition of new wealth management clients. Whether by helping their advisors acquire new clients by planning client events, developing and implementing a process to bring in more clients and/or accounts, spearheading a target market development initiative and/or managing the firm's marketing strategies, the assistant who wins this award takes personal responsibility in delivering excellence and growing his or her organization.

**WellSpan Health** has announced its 2019 Board of Directors, which includes four new members from Franklin County based Summit Health: Philip Fague, William Happel, Nancy Meyers, Esq. and Cheryl Plummer. Summit Health became part of WellSpan Health on Nov. 1, 2018. The WellSpan Health Board of Directors is a 19-member volunteer governing board tasked with oversight of WellSpan Health. Members are elected to three-year terms, with officer terms lasting one year. The board serves as the parent board of WellSpan Health, a regional health system serving the communities of southcentral Pennsylvania.

**The H. Ric Luhrs Performing Arts Center at Shippensburg University** presents "NEEDTOBREATHE: Acoustic Live Tour" on May 5 at 7 p.m. Reserved tickets are on sale now and can be purchased by visiting or calling the Luhrs Center box office at 717-477-SHOW (7469) or online at [LuhrsCenter.com](http://LuhrsCenter.com). NEEDTOBREATHE is a Grammy-nominated rock band hailing from South Carolina. Their most recent album "H A R D L O V E" released in 2016 and debuted at number one on the Billboard Top Albums, Top Current Albums, Top Rock Albums and Top Alternative Albums charts.



**Rotz & Stonesifer, P.C.** is pleased to announce that Danielle Hartz has been promoted to senior associate. Hartz works closely with governmental and non-profit entities, particularly in the audit and nonprofit tax return areas. Hartz started with Rotz & Stonesifer, P.C. in 2016; she prepares personal and partnership tax returns and is a vital part of auditing for the firm. She is a member of the American Institute of Certified Public Accountants and actively volunteers for several non-profits in the area.

**The Capitol Theatre** is hosting a number of events in March. On Friday, March 8, "Houdini!" celebrates the escape artist's life and his astonishing magic at 7:30

p.m. On Saturday, March 9, stop by for a family-friendly matinee at 2 p.m.: "A Dr. Seuss Celebration." Get your St. Patrick's Day celebration on in the Wood Center with authentic Irish music, delicious food and a cash bar on March 15. For more information and a full list of upcoming events, visit [TheCapitolTheatre.org](http://TheCapitolTheatre.org).

**The Council for the Arts** will host "Basic Digital Photography," "The Beauty of Abstraction," "Beginning and Intermediate Portraiture" and a variety of other events this month. Visit [CouncilForTheArts.net](http://CouncilForTheArts.net) to learn about their monthly classes, new events and artistic opportunities!

Franklin County Head Start Program, Inc. has launched a new name: **First Start Partnerships for Children and Families**. As a part of the new name, the organization has also adopted a new mission statement: "We will partner with our families, schools and communities to ensure that each child arrives ready for kindergarten." As First Start Partnerships for Children and Families continues to search for the best ways to support children in the community, the organization seeks to expand services for pregnant mothers and children under the age of three. First Start Partnerships for Children and Families celebrates our Head Start roots, the growth of Early Head Start and Pre-K Counts programs, and invites families to visit our new website at [FirstStartPartnerships.org](http://FirstStartPartnerships.org).

**ACNB Bank** recognizes the positive impact of the community involvement and volunteerism embraced by the Bank's 364 employees working in southcentral Pennsylvania and central Maryland. In 2018, ACNB Bank's employees supported 186 community organizations in the Bank's primary market areas and collectively contributed 7,243 volunteer hours. In addition, Bank staff members supported the local community by coordinating a number of drives and collections, raising funds to benefit local organizations and educating youth and adults on the importance of developing sound financial skills.



**Rotz & Stonesifer, P.C.** is pleased to announce that Tyler G. Schnetzka has joined the firm. Schnetzka has more than five years of experience in public accounting as well as two years of experience as the controller of a private company. He specializes in tax preparation services for individuals, partnerships, not-for-profits and corporations. He has also performed audits and reviews of client information for validity and accuracy to ensure transparency and accountability. Schnetzka earned his Bachelor of Business Administration degree in accounting from York College of Pennsylvania and is a member of the Pennsylvania Institute of Certified Public Accountants.



# A Taste of Grand Point

JOIN US FOR A WALKING FOOD  
TOUR THROUGH  
GRAND POINT CHURCH AT THIS  
MULTI-CHAMBER MIXER!

---

MARCH 19, 2019  
5PM - 7PM

ENJOY HORS D'OEUVRES, DESSERT, LIVE MUSIC,  
GIVEAWAYS, AND MORE!

2230 GRAND POINT ROAD, CHAMBERSBURG, PA 17202





## *Congratulations* to the chamber members who received a dividend.

Those members know it pays to place their business insurance with the ChamberPlus program — one of the great benefits of your chamber membership. By purchasing their insurance through Penn National Insurance, participating members recently received a check in the amount of 15% of their total premium.



GREATER CHAMBERSBURG  
CHAMBER OF COMMERCE



PENN NATIONAL  
INSURANCE

*Feel Secure®*

[www.PennNationalInsurance.com](http://www.PennNationalInsurance.com)

### Program Features

- ▶ All-lines dividend (excluding umbrella and bonds). Dividend payments are based on total group program premium and claims experience of eligible lines. As program grows, so does dividend potential.
- ▶ Enhanced coverages on auto, businessowners, property, workers' compensation, and general liability — giving you added protection at no additional cost
- ▶ Information and services to help reduce losses — the payoff is greater dividend potential

What would 15% of your current premium be?

*Find out how you can join in the dividend potential today!\**

**Strickler**  
*Agency, Inc.*

*Serving Your Insurance  
Needs Since 1925*

800-503-8908 • [www.stricklerins.com](http://www.stricklerins.com)

\*Dividend payments are based upon program eligibility and are not guaranteed.



# GREATER CHAMBERSBURG VIRGINIA HARRIGER CHAMBER FOUNDATION EXEC. DIRECTOR

717-264-7101 ext. 205 | gharriger@chambersburg.org | Chambersburg.org/ChamberFoundation | FranklinCountyWorks.com



## YOUTH LEADERSHIP

Leadership Franklin County (LFC) Youth students met at Grand Point Church in February with the theme 'Encourage the Heart.' Led by Duane Bock of ACNB Bank, the group discussed mentors that encouraged them and worked in teams on the 18-minute Marshmallow Challenge (build the tallest free standing structure with 20 sticks of spaghetti, one yard of tape and string, plus one marshmallow).

Other group work included an exercise on 'harsh words' while pushing toothpaste out of a tube onto a plate to demonstrate that words can't be taken back once said. They also worked to build each other up while in a group circle before enjoying lunch from **Chick-fil-A Chambersburg**. Franklin County President Judge Carol Van Horn spoke to the students about ethics in her career and life while encouraging the students to allow good influences to dictate their paths.

LFC Youth Sponsor:



## CELEBRATING 10 YEARS

This year marks the 10th year of our LFC Youth program! The Foundation's first youth class in 2009 had 67 ninth grade applicants, of which 23 were selected. Please help us locate these alumni of that first LFC Youth class 2009-2010. These students would have graduated high school in 2012 and now be about 25 years old. They came from Chambersburg, Fannett-Metal, Greencastle, Shippensburg, James Buchanan and Waynesboro high schools.

Once we find the bulk of these alumni, look for our LFC Youth 'Where are they now?' series to be found in late spring on the LFC Facebook and LinkedIn pages. If you know anyone on the below list, please have them email Ginny at gharriger@chambersburg.org or connect on our Facebook or LinkedIn pages. Those listed in bold have been contacted.

Erica Carter  
Brooke Daley  
Austin Davis  
Alexandra Dunn  
**Rebekah Elbel**  
Emily Erby  
Bryton Hansen  
Rachel Hollar

Emily Kirk  
Evan Moats  
Kelsey Plum  
Skyler Purvis  
Rebecca Saliga  
Courtney Seibert  
Margeaux Spence  
Reynah Spence

**Michael Shunk**  
**Abigail Thrush**  
**Hannah Wagaman**  
Amanda West  
Katie Wilt  
Kassandra Wright  
Lindsay Zeis



## COMMUNITY LEADERSHIP

Leadership Franklin County (LFC) Community met at **Coyle Free Library** in February with a focus on Ethics & Power in the morning and Diversity in the afternoon. Alan Estes of **GDC IT Solutions** facilitated along with guest speakers Judge Shawn Meyers of the 39th Judicial District, John Massimilla, COO of **Chambersburg Hospital**, Dr. Harry Dieuveuil, vice president of human resources at **Chambersburg Hospital** and Maria Banks, behavioral specialist from **Chambersburg Area School District**.

LFC Community Sponsor:



Meyers covered a variety of ethical topics a judge may encounter. Massimilla spoke on power, its forms and the power paradox. Dieuveuil continued the discussion focused on diversity in the workplace. Banks ended the day leading exercises to help the group learn more about themselves and acceptance of others.

## LEARN & PLAY DAY - MARCH 30

The **United Way of Franklin County** is hosting an Early Learning Expo on Saturday, March 30 from 10 a.m. to 1 p.m. sponsored by **Volvo Construction Equipment**. It will be held at **LifePoint Church** at 339 Lincoln Way E. The free expo will provide information for families about early childhood development, educational providers, community resources and interactive, educational activities for children. Early child care and preschool providers are invited to reserve exhibit space at the expo. For details, contact United Way at aweibley@uwfcpa.org or call 717-262-0015. The United Way and the Foundation are partners in the Community Education Guiding Coalition (CEC) along with Healthy Franklin County.



We deliver unique and cost effective products and services in these key areas:

- ❖ Health Insurance and Employee Benefits
- ❖ ACA/ERISA Compliance
- ❖ Business Insurance
- ❖ Energy Purchasing
- ❖ Community Programs

**We are here to help.**  
**Call 1.800.377.3539!**

solutions. service. strategy



# DOWNTOWN SAM THRUSH CHAMBERSBURG INC. PRESIDENT

717-264-7101 ext. 204 | sthrush@chambersburg.org | DowntownCburg.com



## 2019 DOWNTOWN GUIDES

Downtown Chambersburg Inc. (DCI) released a new Downtown Chambersburg Guide just in time for IceFest as part of ongoing efforts to promote downtown attractions, merchants and amenities. The guide is a brochure-sized pamphlet offering an overview of downtown in a user-friendly format. DCI worked with Centre Publications to produce the guide, which visitors can pick up to reference lists of shops and restaurants, annual events, a map and more.

Guides are available for free at downtown businesses, local hotels, the Franklin County Visitors Bureau and the Chambersburg Heritage Center & Gift Shop. To request guides for distribution at your office and to your clients/customers, please contact Sam Thrush (details above).

### Special thanks to our 2019 Downtown Guide Advertisers:

**Borough of Chambersburg**  
**Candlewood Suites**  
**Capitol Theatre Center**  
**Chambersburg Heritage Center & Gift Shop**  
**Comfort Inn Chambersburg**  
**Congregation Sons of Israel**  
Denture Center, Inc.  
**The Foundry**  
**Franklin County Visitors Bureau**  
Here's Looking at You  
**Historic Texas Lunch**

**Ludwigs Jewelers**  
**Main Street Deli**  
North Square Farmers Market  
**Northwood Books**  
**Olympia Candy Kitchen**  
Pompy's Best View  
**Springhill Suites by Marriott Chambersburg**  
The Tower at the Falling Spring  
**Wenger & Myers Insurance, Inc.**



## 2019 UPCOMING EVENTS

We are counting down the days until spring arrives to bring back two of our most popular events: Pop-up Beer Garden and the Summer Movie Series! Proceeds from these events support downtown revitalization; we appreciate your patronage!

The Pop-up Beer Garden will be held once per month on a week night from May through September. The beer will be cold and the music hot all summer long! We'll have plenty of beer on tap, live music and food available for purchase from a local food truck. Sponsorships are now being accepted including the Grand Sponsor for \$3,000, Premier Sponsor for \$1,000 and Benefactor Sponsor for \$500.

The Summer Movie Series will return on Fridays at Chambers Fort Park beginning at dusk. We will show free, family-friendly movies on June 7, July 5, August 2 and September 6 following the First Friday festivities. Sponsorships are available by contacting Sam.

Please reach out to Sam Thrush if you are interested in playing a significant role in the enhancement of downtown Chambersburg. Volunteers are needed for events, committees, setup, etc. Thank you!



**PAYROLL • HR • ONE LOG-IN**

SERVING COMPANIES WITH 1 - 200 EMPLOYEES

403 Lincoln Way East  
Chambersburg, PA 17201

[www.bcmpayroll.com](http://www.bcmpayroll.com)

bcm@pa.net  
office 717-264-7374  
fax 717-263-6328

**So You Can Get Back to Business**

### **ServiceMASTER Restore**

#### **24 Hour Emergency Response**

- **Fire**
- **Water**
- **Mold**



**717/267-2223**  
**[www.smprofclean.com](http://www.smprofclean.com)**

IICRC Certified Disaster Restoration Company, family owned and operated since 1985



17 Redwood Street, Chambersburg



Occupational  
Services,  
Inc.

Phone: 717-263-9293



49 Industrial Drive, Chambersburg

Serving Franklin and Fulton County, PA since 1957.

**In 2019, we would be pleased for you to consider the ways OSI can be a valuable business partner.**

Our **kitting, packing, and washing** services continue to add insurmountable value to production processes for manufacturing facilities. **The Print Shop** eases the stress of print work, graphic design, and bulk mailings. OSI is elated to be the home of the **ONLY NAID Certified Document Destruction** facility in Franklin County, PA. **The Connector** provides Franklin and Fulton county a local advertising publication that allows your advertising dollars to stay local and provide opportunities right here in our community. Occupational Services, Inc. provides **Community Participation Support** which includes paid and volunteer opportunities for work crews at nearly 2 dozen locations.

**Occupational Services, Inc.**

*Valuable for your Business, Beneficial to our Community*



**OUR MISSION:** OSI will assist individuals with disabilities or other barriers to employment to lead more productive and meaningful lives by maximizing their abilities to achieve their highest potential through vocational programs and employment services.





17 Redwood Street, Chambersburg



Occupational  
Services,  
Inc.

Phone: 717-263-9293



49 Industrial Drive, Chambersburg

Serving Franklin and Fulton County, PA since 1957.

## ASSEMBLY, PACKING & SHIPPING.



## SECURE DOCUMENT DESTRUCTION.



## WOOD SHOP SERVICES.



## ADVERTISING.



## BIN & PALLET WASHING.



## PRINT & BULK MAIL SERVICES.







Providing advocacy, resources and services for  
people with intellectual & developmental disabilities

**SAVE THE DATE**

**APRIL 6, 2019**

**WALK/5K RUN**

**@ SHIPPENSBURG  
TOWNSHIP PARK/CUMBERLAND  
VALLEY RAILS-TO-TRAILS**

Registration: 8am to 8:45am

Race & Walk begin at 9am

Awards to follow race.

**Walk Only Wheelchairs and  
Strollers are Welcome**

**Benefits**

## **Nathan Tappen Memorial Scholarship**

*The scholarship was established to honor the memory of Mr. Nathan Tappen, a consumer with intellectual & developmental disabilities residing in Franklin County PA. The scholarship was created to provide a financial stipend each year to a student pursuing a degree in special education.*

[Scholarship application 2019.pdf](#)

**Register online @  
Timberhilltiming.com**

**Pre-registration for 5k  
is \$20 by April 1".  
\$30 registration after  
the deadline.**

**Walkers must register  
by donation only.**



Presented by The Shook Rehabilitation & Wellness Center,



# Sip & Savor FIRE AND ICE

*Our exclusive fundraising event of the season.*

**SATURDAY, APRIL 13**

**THE ORCHARDS, 1580 ORCHARD DR., CHAMBERSBURG**

**5:30 P.M. RECEPTION, 6:30 P.M. DINNER**

**FORMAL, BLACK TIE OPTIONAL**

Signature fundraiser hosted by the Greater Chambersburg Chamber of Commerce will feature a decadent, four-course food & wine pairing, live & silent auctions, games of chance, musical entertainment & networking. Menu prepared by Chef Mike Kalathas with exquisite wines from Adams County Winery and Jan Zell Wines.

*Tickets: \$85 Early Bird by March 8, \$95 Regular by April 1*

*RSVP: [Chambersburg.org/Events](http://Chambersburg.org/Events) or 717-264-7101*

## GRAND SPONSOR

(EXCLUSIVE)



## HEADS OR TAILS SPONSOR

(EXCLUSIVE)



PENN NATIONAL  
INSURANCE  
*Feel Secure®*

## SILENT AUCTION SPONSOR

(EXCLUSIVE)



## ENTERTAINMENT SPONSOR

(EXCLUSIVE)



## BENEFACTOR SPONSORS

LCSI LEHMAN CONSTRUCTION SERVICES, INC.  
CONEWAGO ENTERPRISES, INC.

## PATRON SPONSORS

BARTLETT TREE EXPERTS  
NEWCOMER ASSOCIATES  
PATRIOT FEDERAL CREDIT UNION  
PEOPLEREADY  
VALLEY AGENCY

## SPONSOR OPPORTUNITIES

\$2,000 WINE SPONSOR (EXCLUSIVE) - TABLE FOR 8  
\$1,000 LIVE AUCTION SPONSOR (EXCLUSIVE) - TABLE FOR 8  
\$750 PREMIER SPONSOR - SEATING FOR 6  
\$500 BENEFACTOR SPONSOR - SEATING FOR 4  
\$250 PATRON SPONSOR - SEATING FOR 2

CONTACT JOEL BLACK FOR SPONSOR DETAILS AT [JBLACK@CHAMBERSBURG.ORG](mailto:jblack@chambersburg.org)  
OR CALL 717-264-7101 EXT. 202.





**Greater Chambersburg Chamber of Commerce**  
100 Lincoln Way East, Suite A  
Chambersburg, PA 17201  
717-264-7101  
Chambersburg.org

PRSRD STD  
U.S. POSTAGE  
**PAID**  
Permit #7  
Chambersburg, PA

# MARCH EVENTS

## DETAILS / REGISTER CHAMBERSBURG.ORG/EVENTS

**08** **EARLY BIRD PRICING ENDS FOR SIP & SAVOR: FIRE & ICE**  
EVENT HELD APRIL 13 AT THE ORCHARDS, \$85 EARLY BIRD, \$95/TICKET AFTER MARCH 8

**12** **11/30 NETWORK YOGA SERIES**  
5:30 - 6:30 P.M., COYLE FREE LIBRARY, 102 NORTH MAIN ST., CHAMBERSBURG

**19** **CHAMBER MIXER: A TASTE OF GRAND POINT**  
5 - 7 P.M., GRAND POINT CHURCH, 2230 GRAND POINT RD., CHAMBERSBURG

**26** **CHAMBER TRAVEL CLUB: NORTHERN IRELAND INFO SESSION**  
5:30 - 6:30 P.M., CHAMBERSBURG CHAMBER, 100 LINCOLN WAY E., CHAMBERSBURG

**28** **LUNCH & LEARN: LEADERSHIP ACCOUNTABILITY**  
11:30 A.M. - 1 P.M., CHAMBERSBURG CHAMBER, 100 LINCOLN WAY E., CHAMBERSBURG

**30** **COMMUNITY EDUCATION COALITION: EARLY LEARNING EXPO**  
10 A.M. - 1 P.M., LIFEPOINT CHURCH, 339 LINCOLN WAY E., CHAMBERSBURG

## Valley Agency COMPANY **INSURANCE** (717)264-4311



- Friendly Professional Service
- Competitive Pricing from Multiple Companies
- Stability of serving the community for over 100 years!

*"Corner of Norland & Fifth Avenues"*



Working together to help our  
members prosper and to  
enhance the quality of life in the  
Chambersburg area.



5-star accredited by the  
U.S. Chamber of Commerce



The Outlook is a publication of the Greater Chambersburg Chamber of Commerce. Ideas, opinions and statements expressed in articles by contributors are not necessarily those of the Chamber. Neither the publisher nor any individual associated with any branch of production, nor the advertisers, will be held liable for typographical misprints contained herein.