

#### IN THIS ISSUE

- 2 Chair's message
- 2 Chamber board and staff
- 3 Chamber Award Winners
- 4 LFC Youth report
- 4 LFC Community update
- 5 Downtown Mural Project
- 5 Second Saturdays return
- 5 Pop-up Beer Garden
- 6 Restaurant Week at ChambersFest
- 6 Upcoming Lunch & Learns
- 6 23rd Annual Golf Tournament
- 6 May & June Chamber Mixers
- 7 Around town with the Chamber
- 8 Spotlight: Herbruck's Poultry Ranch
- 8 Spotlight: ULTA Inc.
- 8 Giving back
- 8 PA Chamber update
- 9 Welcome new members
- 9 Milestone anniversaries
- 10 Members in the news
- 12 Calendar of events

#### SAVE THE DATE

##### July 14 SCOOP-A-PALOOZA

Enjoy all-you-can-eat ice cream samples from a variety of local ice cream shops and vote for your favorite! The event will feature a fun kids' area, live entertainment and more. View the insert in this newsletter for more information.

##### July 14-21 CHAMBERSFEST RESTAURANT WEEK

Prepare your taste buds for the 2nd Annual ChambersFest Restaurant Week! Enjoy meal deals, special dishes and daily prizes for patrons all week long at participating restaurants. Contact Laiton Suders for restaurant or sponsor details at 717-264-7101 ext. 214.

Visit [Chambersburg.org/Events](http://Chambersburg.org/Events) for details. This month's events are listed on the back of the newsletter.

## Local leaders honored for accomplishments

The Greater Chambersburg Chamber of Commerce honored 10 of its members for their outstanding achievements in 2017 with more than 200 people in attendance at the Annual Awards Breakfast, sponsored by **M&T Bank**.

"It's truly an honor to recognize and thank our members for their exceptional contributions," said Stephen Christian, president of the Chamber. "Not only are significant amounts of investments and property improvements happening in the area, but our members are constantly devoting their time and energy to building up the quality of life in our community."



Janet Pollard, the director of the **Franklin County Visitors Bureau**, accepted the international ATHENA Leadership Award to a standing ovation at the Chambersburg Country Club. The award honors an individual who exemplifies professional, community and personal leadership as well as someone who actively assists women in reaching their full leadership potential and/or personal and professional advancement. The Athena award is sponsored locally by **Jennings Chevrolet, Buick, GMC and F&M Trust**.

For nearly 30 years, Pollard has demonstrated her drive and commitment to Franklin County starting with her love of local history. Her leadership through the years has included writing local historical publications, establishing the Chambersburg Heritage Center & Gift Shop and excelling in her role as the director of the **Franklin County Visitors Bureau**.

## Catch the spirit of ChambersFest

On July 30, 1864, Chambersburg became the only northern town burned by Confederate soldiers during the Civil War. Chambersburg bounced back quickly and has celebrated the spirit of the townspeople with an annual festival, ChambersFest, each year since 1986.



This year's ChambersFest will be July 14-21. Many events will be held including Restaurant Week, Scoop-a-palooza, Old Market Day, Tim and Susan Cook Memorial 1-Mile Race, 1864: The Burning, downtown events and more! For the most current schedule of events, visit [Chambersburg.org/ChambersFest](http://Chambersburg.org/ChambersFest).

ChambersFest takes a significant amount of time to plan and coordinate, and the Chamber is asking members for support. Sponsors enable us to offer and promote events for the community while boosting the area economy. For more information, view the newsletter insert or contact Lark Plessinger at 717-264-7101 ext. 206 or [lplessinger@chambersburg.org](mailto:lplessinger@chambersburg.org) by Friday, June 8.

**BOARD OF DIRECTORS**

- Kim Crider**, Take Shape for Life - Chair
- Troy Garman**, RE/MAX Realty Agency - Immediate Past Chair
- Michael J. Connor**, Walker, Connor & Spang, LLC - Treasurer
- Sherri H. Stahl**, Summit Health - Secretary
- Michael Doncheski**, Penn State Mont Alto - Foundation President
- Eric Foreman**, Patriot Federal Credit Union - CADC Vice President
- Brian Speer**, Wilson College
- Rod Hocker**, Johnnie's Restaurant & Hotel Service
- Carlos Perez**, CPA Wireless Boost Mobile
- Melanie Furlong**, SpiriTrust Lutheran Home Care & Hospice
- Alice Hawbaker**, LCSi Lehman Construction Services, Inc.
- Luke Martin**, Smith Elliott Kearns & Co., LLC
- Mark Story**, Franklin County Library System
- Jeff Truhan**, The Shook Home
- Mark Durniak**, Fuddruckers
- Brad Evans**, Bartlett Tree Expert Company
- Angela Lynch**, Chambersburg Area School District Foundation
- Patricia Abbott**, Strickler Insurance Agency
- Bill Boltz**, ULTA Beauty
- Jake Naugle**, Patriot Federal Credit Union

**CHAMBER STAFF**

- Steve Christian - President  
*schristian@chambersburg.org*
- Maryliz Toohig - Finance Director  
*mtoohig@chambersburg.org*
- Angie Schaeffer - Director of Operations & Assistant to the President  
*aschaeffer@chambersburg.org*
- Lark Plessinger - Communications & Marketing Manager & Civil War Seminars Coordinator  
*lplessinger@chambersburg.org*
- Stacy Guyer - Accounting Assistant,  
*sguyer@chambersburg.org*
- Sue Black - Customer Service Representative & Heritage Center Coordinator  
*receptionist@chambersburg.org*
- Laiton Suders - Marketing Assistant & Customer Service Representative  
*lsuders@chambersburg.org*
- Amy Weibley - President of Downtown Chambersburg Inc. & 11/30 Network Coordinator  
*aweibley@chambersburg.org*
- Robin Harmon - Executive Director of the Chamber Foundation  
*rharmon@chambersburg.org*

**CHAIR'S MESSAGE**

**Getting to know the leadership programs**

As Chamber Chair, one of the things I love learning is how much our Chamber offers to our members and our community through its programs. Recently, Robin Harmon led me through an orientation about the Chamber's affiliate, the Greater Chambersburg Chamber Foundation. This program is dedicated to workforce development, education and citizenship with three county-wide leadership programs.



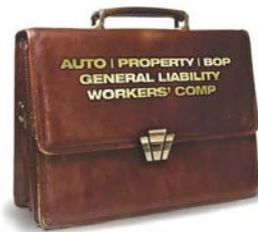
The Foundation began 28 years ago and was created to promote leadership through education so as to allow the development and maintenance of a thriving free enterprise system. There are several key programs under the Foundation, but I would like to focus on its Leadership Franklin County (LFC) programs for adults and students. The adult course lasts nine months and embraces both current and emerging leaders from across the community in order to educate them on, and bring awareness to, the problems, opportunities and resources within our county. One of the many benefits of this program is the ability for participants to work together on, and find solutions for, real projects that have been submitted by local groups who may not have the manpower and/or knowledge to tackle the projects in-house. Participants graduate from the program with a much better understanding of how different businesses across multiple industries serve our community; this allows them to integrate that knowledge into their work.

LFC also has a youth program for students entering the tenth grade. Its mission is to create a community of young people who are actively engaged in responsible, ethical and effective leadership. In addition, LFC offers half or full day leadership sessions each year. On May 15, they will once again be a host site for Leadercast: Lead Yourself at Shippensburg University. If you are interested in applying for the upcoming 2018/19 LFC Community program or if you have a project you would like to submit that would advance a program, project or organization, please contact Robin Harmon at [rharmon@chambersburg.org](mailto:rharmon@chambersburg.org) or 717-264-7101.

**Kim Crider**

Certified Health Coach, Take Shape for Life  
*Board Chair, Greater Chambersburg Chamber of Commerce*

**Affordable business insurance featuring enhanced coverages — plus the opportunity to earn a dividend.**



Learn how, as a member of the Greater Chambersburg Chamber, you could earn an all-lines\* dividend by placing your insurance with Penn National Insurance.

*\*except bonds and umbrella*

Call this member agency today!



**PENN NATIONAL INSURANCE**  
*Feel Secure®*



[www.pennnationalinsurance.com](http://www.pennnationalinsurance.com)

800-503-8908 • [www.stricklerins.com](http://www.stricklerins.com)



(CONTINUED FROM COVER)

## Award winners



### Property Improvement - Rehabilitation over \$500,000

**The Shook Home and the Quarters at the Shook** constructed a three-story, state-of-the-art Rehabilitation and Wellness Center in downtown Chambersburg. The facility includes a therapy gym for in-patient, short-term rehab residents; an aquatic therapy pool for in-patients and out-patients; another therapy gym and six large private resident rooms for in-patient, short-term rehab residents. Chamber members involved with the construction included **Brechbill & Helman Construction Co., Inc., Newcomer Associates, Architecture + Engineering, Dennis E. Black Engineering, Inc., Snavelly's Garden Corner, Inc., Ralph E. Tolbert Masonry, Inc., Glessner Technologies, Frank B. Leshar Company, Tele-Plus Corporation** and **Elect Technology Management**.

### Property Improvement - Historic Preservation

**The Franklin County Library System** was honored for their outstanding renovations at the Coyle Free Library located at 102 N. Main St. The new library embraces its original roots as the Chambersburg Post Office and an office for the IRS, and also preserves the original woodwork, marble floors and more. The \$5.5 million project, known as the Campaign for Coyle, was completed in December 2017. Chamber members involved in the project included **Noelker and Hull Associates, Inc., David H. Martin Excavating, Inc.** and **Stouffer Mechanical Contractors**.

### Property Improvement - Historic Preservation Honorable Mention

**Drawbaugh Development** was also awarded an honorable mention for the extensive renovation of 1 N. Main St. Drawbaugh's ingenuity in combining modern conveniences while preserving the historical integrity of the structure deserved an honorable mention for the historic preservation of such a vital property. Chamber members **David Black Associates, Inc., Ralph E. Tolbert Masonry, Inc., Fleagle's Painting LLC** and **Haldeman's Construction** all contributed to the project.

### Environmental Sustainability Award

The Landscaping and Horticulture program led by Instructor David Perry at **Franklin County Career and Technology Center** has designed a number of learning opportunities and activities for their students to stress the importance of sustainable living and conservation of natural resources. Some of those initiatives have included recycling old soil and plants to create outdoor trial gardens as well as planting the downtown Chambersburg hanging baskets that line Main Street. Other student projects include partnering with the Diesel Technology program to plant and sow corn and soybeans to develop renewable bio diesel fuel.

### Innovator of the Year

Dr. David J. Ludwick of **Ludwick Eye Center** has demonstrated his innovation by challenging his field and leading the way to provide Franklin County with the best and latest ophthalmic care. Over the past 20 years, Dr. Ludwick has pursued compassionate and quality care while leading the ophthalmic industry in the tristate area. Some advancements he has incorporated include advanced intraocular lens implants to offer a greater range of vision following cataract surgery, minimally invasive glaucoma surgery devices, the opening of the Ambulatory Surgery Center and much more.

### Nonprofit of the Year

**South Central Community Action Programs'** mission is to empower families and engage the community to pursue innovative and effective solutions to break the cycle of poverty. Programs like Child Care Information Services and Work Ready focus on keeping Franklin County residents working and able to afford to take care of their families. SCCAP also has homeless shelter programs, rapid rehousing, homeless prevention and support circles – these are to help families develop a future story and then work to stabilize their lives and reach their goals. The community work that SCCAP does, such as poverty simulations, training on understanding economic/cultural differences and coordinating Franklin Together enable them to work with countless partners to increase their collective results.

### Young Professional of the Year

Morgan Neuburger's capacity to learn and engage helped her to quickly advance her career at **Brechbill & Helman Construction, Co.** Neuburger is an active volunteer involved with the 11/30 Network, Scoop-a-Palooza, IceFest, Oktoberfest, CrabFeast, Sip & Savor Soiree and more.

### Volunteer of the Year

Angela Quigley of **Smith Elliott Kearns & Co.** has been involved with Downtown Chambersburg, Inc. (DCI) since 2012, including volunteering on committees for IceFest and serving as a member of DCI's board of directors. Quigley also serves as the treasurer of the Greater Chambersburg Chamber Foundation board of directors, and is actively involved in Leadership Franklin County Community.

### Spirit of the Community

Penny Shaul of **Downtown Business Council** has become an essential part of the revitalization of downtown Chambersburg. One of her greatest contributions has been her dedication to IceFest, which has grown into the single largest ice festival in Pennsylvania. The event supports local businesses and three nonprofit organizations.

#### THANKS TO OUR SPONSORS

Grand Sponsor



*ATHENA Leadership Award Sponsors:*

*F&M Trust*

*Jennings Chrevrolet, Buick, GMC*

#### Table Sponsors

*BB&T, Brechbill & Helman Construction Company, Inc., F&M Trust, Keystone Health, Menno Haven, Montessori Academy of Chambersburg, Patriot Federal Credit Union, The Shook Home and the Quarters at The Shook\*, Smith Elliott Kearns & Co., Summit Health, Wilson College \*Sponsored two tables*

#### Patron Sponsors

*First Community Bank of Mercersburg, Herbert, Rowland & Grubic, Inc., Johnnie's Restaurant & Hotel Service, Inc., LCSi Lehman Construction Services, Inc., Penn National Insurance, Penn State Mont Alto, PeopleReady, Providence Place, SpiritTrust Lutheran*



# JUNE 14, 2018



GREATER CHAMBERSBURG  
CHAMBER OF COMMERCE



**SPONSORSHIPS**  
SEE REVERSE

spherion®

PRESENTS

23<sup>RD</sup> ANNUAL CHAMBER

**GOLF TOURNAMENT**

CHAMBERSBURG COUNTRY CLUB

THURSDAY, JUNE 14

**\$95 PER GOLFER // 4 PERSON SCRAMBLE**

11AM LUNCH // 12:30PM SHOTGUN START // DINNER AFTER



1921

**RSVP BEFORE IT SELLS OUT!**  
[CHAMBERSBURG.ORG/EVENTS](http://CHAMBERSBURG.ORG/EVENTS)



spherion® PRESENTS

# SPONSORSHIPS

CHAMBER GOLF TOURNAMENT

**\$500**

## TENT SPONSOR

- Prime course location
- Meet & greet golfers
- Logo featured on event promo materials



**\$500**

## BENEFACTOR SPONSOR

- One team entry
- Featured on event webpage & program
- 1 Tee-box/Green signs

**\$1,250**

## CONTEST SPONSOR\*

- One team entry
- Signage at all contest sites
- Logo featured on event webpage
- Logo featured in tournament promos
- Opportunity to address attendees at dinner
- 3 Tee-box/Green signs



**\$1,000**

## PREMIER SPONSOR

- One team entry
- Logo featured on event webpage
- Logo featured in Tournament promos & program
- 3 Tee-box/Green signs



POST 1599

## OTHER SPONSORSHIPS:

RAFFLE PRIZE SPONSOR

HOLE IN ONE SPONSORS:



BEVERAGE SPONSOR:



## CONTESTS

- LONGEST DRIVE
- CLOSEST TO THE PIN
- HOLE-IN-ONE

# SPONSORSHIPS

\*LIMITED, CALL 717-264-7101 x202

CONTEST SPONSOR\* - \$1,250  
TENT SPONSOR - \$500

PREMIER SPONSOR - \$1,000  
BENEFACTOR SPONSOR - \$500

HOLE SPONSOR - \$100 OR 3 FOR \$250

## REGISTRATION FORM

Business Name: \_\_\_\_\_

Credit Card \_\_\_\_\_

Address: \_\_\_\_\_

Exp: \_\_\_\_\_ CCV \_\_\_\_\_ Signature: \_\_\_\_\_

Phone: \_\_\_\_\_ Email: \_\_\_\_\_

place me in a foursome  register my foursome (list below)

Sponsorship Level: \_\_\_\_\_

Name & Business: \_\_\_\_\_

Contact: \_\_\_\_\_

Name & Business: \_\_\_\_\_

Payment Amount: \_\_\_\_\_

Name & Business \_\_\_\_\_

Name & Business \_\_\_\_\_

Return to Chambersburg Chamber at 100 Lincoln Way E., Chambersburg, Pa 17201 or jblack@chambersburg.org



GREATER CHAMBERSBURG CHAMBER FOUNDATION

100 Lincoln Way East, Chambersburg, PA 17201  
717-264-7101 ex. 205 | Chambersburg.org/ChamberFoundation

**LFC Youth graduation**

The final session of the Leadership Franklin County (LFC) Youth Class of 2018 was held in April. Jason Crider of **Orrstown Bank** gave the class tips about public speaking. The class was then able to practice spontaneous one minute speeches on random subjects. Finally, each project team did a practice run of their graduation presentation. This year each group did a project to benefit the **South Central Community Action Program**. The teens worked either with the Circles, Food Pantry or Gleaning programs.

On April 29 the youth presented their finished projects and reminisced about their LFC Youth experience at their graduation ceremony held at Wilson College. As the teens spoke about their projects, they reflected on how they applied the five leadership principles they learned during the year to their projects. These principles from the Kouzes and Posner book, "The Student Leadership Challenge" are Model the Way, Inspire A Shared Vision, Challenge the Process, Encourage the Heart and Enable Others to Act.

The graduates of the class of 2018 are: Harold Coder, Prudence Colver, Natalie Crawford, Micaela Dougherty, Camaryn Ellis, Malia Hall, Ana Herrera, Madison Hershey, Akhila Kunuthuru, Corinne Leighty, Katie McGee, Elena McNulty, Sean Meehan, Samuel Reid, Halei Risbon, Brenna Rosenberry, Desirae Rowland, Secret Shaffer, Kenna Shearer, Elijah Snyder, Lydia Story, Jealee Stouffer, Emily Velazquez  
Leadership Franklin County Youth is offered free to area tenth grade students thanks to a sponsorship from Wilson College. The class of 2019 will hold their orientation session on May 8. LFC Youth sponsored by **Wilson College**.



**Exploring education & history**

Leadership Franklin County Community explored education and history in April. The day began with Dr. Eric Michael of **Wilson College** leading the class in a discussion of the current state of education in Franklin County. Dr. Michael then led the class in a mock school board exercise where they were able have a small taste of the issues public schools face. Next the class learned about early childhood education in Franklin County with Amy Hicks of the **United Way of Franklin County**. Jim Duffey, administrative director of the **Franklin County**



The LFC Youth class interacted with Jason Crider of Orrstown Bank.

**Career and Technology Center**, treated the class to a tour of the school. Finally, a panel of education options outside of traditional public school spoke to the class about their options. This included Dr. Mark Long, **Chambersburg Career Magnet School**; Angel Snowberger, home school representative; Camille Smith, **Montessori Academy of Chambersburg** and Patricia Flood, **Shalom Christian Academy**.

During the afternoon session, the class explored Franklin County's past with Janet Pollard of the Franklin County Visitors Bureau. Each student in the class presented on one historical figure from various eras in our past including Benjamin Chambers, Daniel Royer, James Buchanan, Blanche Nevin and T.K. Nitterhouse. The day ended with a prospecting reception for possible incoming students at the Heritage Center. Applications are now available for the class of 2019 at [FranklinCountyWorks.com/Leadership](http://FranklinCountyWorks.com/Leadership) and are due by June 30. LFC Community sponsored by **CenturyLink Business**.

**Apply for LFC Community Class of 2019**



Learn more about the community and enhance your leadership skills with the Leadership Franklin County (LFC) Community program. The application deadline is June 30 and tuition is \$1,300. A limited number of scholarships are available. LFC strives to improve the quality and effectiveness of leadership in Franklin County by bringing together emerging leaders who represent a cross-section of the community. The program creates an awareness of the problems, opportunities and resources available in the area while stimulating a commitment from students to work together to make Franklin County a better place in which to live and work.



Applications are available at [FranklinCountyWorks.com/Leadership](http://FranklinCountyWorks.com/Leadership). For more information, contact Robin Harmon, executive director of the Greater Chambersburg Chamber Foundation, at 717-264-7101 ext. 205 or [rharmon@chambersburg.org](mailto:rharmon@chambersburg.org).



**PAYROLL • HR • ONE LOG-IN**  
SERVING COMPANIES WITH 1 - 200 EMPLOYEES

403 Lincoln Way East  
Chambersburg, PA 17201  
[www.bcmpayroll.com](http://www.bcmpayroll.com)

bcm@pa.net  
office 717-264-7374  
fax 717-263-6328

**So You Can Get Back to Business**

DOWNTOWN CHAMBERSBURG, INC.  
100 Lincoln Way East, Chambersburg, PA 17201  
717-264-7101 ex. 204 | DowntownCburg.com

## Color downtown!



Downtown Chambersburg Inc. (DCI) is coordinating the 6th Annual Downtown Mural Project that will add color and creativity to the public spaces in the heart of Chambersburg. Area artists are invited to create an individual mural that will be displayed at various outdoor locations in the downtown area.

Prepared canvases (1/4" primed plywood) will be available free of charge at the Chamber office, 100 Lincoln Way E. beginning in early June and will be 2-by-4- feet in size. The deadline for submissions is August 1.

The installation will be unveiled at a First Friday event on September 7. The murals will be judged and awards will be announced on October 20 on the Downtown Chambersburg Facebook page. Community members of all ages are encouraged to participate.

### Guidelines for work:

- Must be the artist's individual work in design and execution.
- Work must be able to withstand outdoor display for about nine months; two coats of marine grade primer are highly recommended.
- Work must be suitable for all ages.
- Committee has the right to determine the suitability of work.
- All mediums and themes are welcome.

Submissions will be photographed and posted on the Downtown Chambersburg Facebook page. For entry forms and details, visit [DowntownCburg.com](http://DowntownCburg.com) or call 717-264-7101 ext. 204.

## Second Saturday Movies



Second Saturdays are back this summer at Chambers Fort Park featuring free, family-friendly movies beginning at dusk. Coordinated

by Downtown Chambersburg Inc. (DCI), the movie series kicks-off on June 9 and continues through September (July 14, August 11 and September 8). Free kids' activities will precede the movies beginning one hour before showtime.

Sponsored by **F&M Trust** and **Summit Health**, the movie series for 2018 includes:

- June 9 - The Lion King
- July 14 - COCO
- August 11 - Wonder Woman
- September 8 - Despicable Me 3

This year we're partnering with the **Coyle Free Library** to hold the event rain or shine! In case of inclement weather, the kids' activities and movie will be moved into the Coyle Free Library. If the event is moved, an announcement will be made on the Downtown Chambersburg Facebook page the day of the event.

Second Saturdays are free and open to the public. Attendees are encouraged to bring blankets and chairs. Chambers Fort Park is located between North Main Street and the Rail Trail at the confluence of the Conococheague and Falling Springs. For more information, visit [DowntownCburg.com](http://DowntownCburg.com).

## Enjoy summer evenings at the Pop-up Beer Garden



Summertime - the air is warm, the beer is cold and the music is hot! Celebrate hump day once a month after a hard day's work at the Chambersburg Pop-up Beer Garden including live music, cold beer, a food truck and other activities.

Downtown Chambersburg Inc. (DCI), along with Grand Sponsor Volvo Construction Equipment and Premier Sponsor 1st Ed Credit Union, will host the Pop-up Beer Garden in the Heritage Center Parking Lot, 100 Lincoln Way E., from 5 to 8 p.m. on the last Wednesday of the month from May through August. Live music will begin at 5:30 p.m. featuring performances by:

- May 30 - Rebekah Foster
- June 27 - Jon Ingels
- July 25 - Cody Wilt
- August 29 - Kenny Fetterman

As an outdoor event, the Beer Garden is at the whim of Mother Nature's mood swings. In case of inclement weather, the event will be cancelled. Cancellations will be posted on the Downtown Chambersburg Facebook page. Beer and food will be available for purchase. Entry is free. Attendees must be 21 or older to enter. For more information, visit [DowntownCburg.com](http://DowntownCburg.com).



FREE EVENT

# SECOND SATURDAY

## Movies in the Park

CHAMBERSBURG PA

Presented by



Summit Health  
THE PEAK OF GOOD HEALTH



### CHAMBERS FORT PARK | DUSK

Rain Location: Coyle Free Library (limited seating)

Bring your own snacks, blankets & chairs

JUNE 9  
THE LION KING

JULY 14  
COCO

AUGUST 11  
WONDER WOMAN

SEPTEMBER 8  
DESPICABLE ME 3

FREE & FUN  
KIDS' ACTIVITIES  
PROVIDED ONE  
HOUR BEFORE  
THE SHOW!



[www.DowntownCburg.com](http://www.DowntownCburg.com)







THE NEXT CHAPTER  
Campaign for Coyle

# Personalize a Paver to be Placed at Coyle Free Library

\$250 each

*Order by 5/31/18 for next placement*

Show your support by having your name or the name of a loved one permanently engraved on an 8 x 8 paver. Over 200 pavers have already been ordered and placed at Coyle Free Library. Orders will be ongoing. Future pavers will be placed along the walkways. The \$250 donation is a tax deductible gift.

*Examples of Pavers:*

YOUR  
BUSINESS  
NAME  
HERE

THE  
CHAMBERSBURG  
AFTERNOON  
CLUB

IN LOVING  
MEMORY OF  
DEBBIE  
SMITH

*Our pavers are sourced and engraved by Franklin County businesses!*

Name: \_\_\_\_\_

Street Address: \_\_\_\_\_

City/State/Zip: \_\_\_\_\_

Phone Number: \_\_\_\_\_

E-mail: \_\_\_\_\_

Engraving on your paver can be up to 13 characters per line and up to 4 lines on each paver. A space between words and numbers counts as a character.

Please print below (one letter per space) what you would like engraved on your paver.

Note that "&" is not a character we can engrave. We suggest "+" instead.


Please mail this completed form with your check payable to **FCLS-Coyle Building Fund**  
**101 Ragged Edge Road South, Chambersburg, PA 17202**

Or you may scan / email the form to: Mark Story [mdstory@fclspa.org](mailto:mdstory@fclspa.org)

Online donations for your paver can be made at [www.coylefreelibrary.org](http://www.coylefreelibrary.org)

*Please contact me about receiving a paver certificate suitable for gift giving.*



## Restaurant Week returns for ChambersFest

By popular demand, Restaurant Week is back for ChambersFest! The 2nd Annual ChambersFest Restaurant Week from July 14-21 will feature unique cuisines and specials to showcase the best in dining.



More than 20 restaurants are expected to participate and will feature special dishes or meal deals. Patrons will have a chance at daily prizes as their taste buds take them on a tour of Chambersburg's finest cuisine.

If you're a restaurant owner or manager, we encourage you to participate (it's free!). The event will feature restaurants, cafes and breweries in the Chambersburg area. As a participant, you will benefit from free marketing and the attraction of both local and visiting patrons. Participation is simple: just offer a special dish or meal deal the week of July 14-21. The Chamber will provide promotional materials to display in your restaurant as well as advertise your business via social media, newsletters, e-newsletters, website presence, e-blasts and radio commercials. For more information, please contact Laiton Suders at [lsuders@chambersburg.org](mailto:lsuders@chambersburg.org) or 717-264-7101 ext. 214.

Interested in sponsoring Restaurant Week? Advertise easily to thousands of locals and visitors; sponsorships are available starting at \$250. Contact Lark Plessinger at [lplessinger@chambersburg.org](mailto:lplessinger@chambersburg.org) or 717-264-7101 ext. 206 for more details.

## May and June Lunch & Learns

Two Lunch & Learns are scheduled in the upcoming months. **Penn State Mont Alto** will present a Lunch & Learn on May 10 from 11:30 a.m. to 1 p.m. held at the Chamber called "Let's Get REAL! (Retain Engaged Active Leaders)." Attendees will review workforce statistics, discuss the impact that engaged/disengaged employees have on your business and identify some strategies to help steer your business in the right direction.

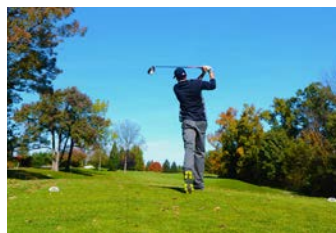
June's Lunch & Learn will be hosted by **Highmark Blue Shield** on June 14 from 11:30 a.m. to 1 p.m. at the Chamber. Attendees at both events will enjoy lunch courtesy of **Fuddruckers**.

Lunch & Learns are free to attend with limited seating available. Be sure to register in advance at [Chambersburg.org/Events](http://Chambersburg.org/Events) or by calling 717-264-7101. Any cancellations made less than 48 hours prior to the event or no shows will be billed \$10.

## 23rd Annual Golf Tournament

Spaces are filling up quickly for the 23rd Annual Golf Tournament held on the greens of the **Chambersburg Country Club**, 3646 Scotland Rd.

The event is sponsored by **Spherion** on Thursday, June 14. The tournament will kick-off with registration and lunch at 11 a.m. followed by a shotgun start at 12:30 p.m. Cost is \$95 per golfer. Several sponsorships are available, including



Premier (\$1,000), Benefactor (\$500), Contributor (\$250) and Hole (\$100) sponsors. To sponsor or donate a door prize, contact Joel Black at 717-264-7101 ext. 202 or [jblack@chambersburg.org](mailto:jblack@chambersburg.org). Space is limited, please reserve early! To register, visit [Chambersburg.org/Events](http://Chambersburg.org/Events). Special thanks to Contest Sponsor **Valley Agency Insurance** and Premier Sponsor **Charles Nitterhouse Post 1599 VFW**.

## Chamber Travel Club



Have you ever imagined yourself sitting on the patio of a café in Italy, eating genuine Italian pizza with creamy gelato for dessert? Or maybe you've dreamt of a gondola ride on the canals of Venice, or exploring the beautiful streets of mystical Siena. The Chamber Travel Club and Kay's World Class Travel want to make your dreams come true on a 10-day exploration of Italy, November 6-15, 2018! 28 travelers are already booked - only 12 seats left.

**Sign up for a free info session about the trip with Kay Estep of Kay's World Class Travel on Monday, May 14 from 6 to 7 p.m. at the Chamber. Register at [Chambersburg.org/Events](http://Chambersburg.org/Events).**

How close have you ever ventured toward a volcano? Say "yes" to a thrilling adventure with the Chamber Travel Club and visit the Costa Rican Arenal Volcano, considered one of the most active volcanoes in the world. You may even catch a glimpse of the red lava flowing down the sides of this magnificent feat of nature. Bring your camera - you'll regret leaving it at home. The trip is February 16-24, 2019 and is \$2,108 land price per person.

**Join Renee Brink of Uniquet Chambersburg Travel for an information session about the Costa Rica trip on Thursday, May 17 from 5:30 to 6:30 p.m. at the Chambersburg Chamber. Refreshments provided! Register at [Chambersburg.org/Events](http://Chambersburg.org/Events).**

The Chamber Travel Club is an opportunity for local residents to enjoy unique group travel experiences with their neighbors to amazing destinations. The Chamber works with its member travel agents to coordinate these trips. To join the email distribution list, please contact Lark Plessinger at [lplessinger@chambersburg.org](mailto:lplessinger@chambersburg.org).

## May & June Chamber Mixers

Don't miss one of the largest mixers of the year - the Cinco de Mayo Regional Mixer on Thursday, May 3 from 5 to 7 p.m. at the Conference Center at **Shippensburg University**, 500 Newburg Rd. Several chambers from throughout the region participate in this popular mixer each May, which includes beverages and Mexican-themed appetizers. To register, contact the Shippensburg Chamber of Commerce at 717-532-5509 or [chamber@shippensburg.org](mailto:chamber@shippensburg.org).

The 9th Annual Kennebec Drive mixer is coming! This popular block party thrown by Chamber-member businesses will be held in mid-June, rain or shine. You'll enjoy delicious food and refreshments along with networking. Held outside under a large tent, please dress prepared for the weather. Check [Chambersburg.org/Events](http://Chambersburg.org/Events) for the date and time as well as registration details. For questions, contact Joel Black at 717-264-7101 ext. 202.



## AROUND TOWN WITH THE CHAMBER



### Ribbon Cutting: BookMobile

We were happy to celebrate the Franklin County Library System's new BookMobile recently. Instead of a ribbon, a map of Franklin County was cut to symbolize the removal of any geographical barrier to library services.



**New member plaque deliveries continue**

Alpha Media's 10-year milestone membership plaque was received by Rick and Lisa, of Mix 95.1! Thank you for being a part of the Chamber.

### Spring Break Mixer at ACNB Bank

Members sampled delicious barbeque from CJ's BBQ Smokehouse at the spring mixer hosted by ACNB Bank. Thank you for coming and enjoying food, drinks and networking with other Chamber members.



### Sold Out Awards Breakfast

We were honored to award 10 local businesses and community members for their outstanding accomplishments in 2017 at our Annual Awards Breakfast sponsored by M&T Bank!



### Members Network at Breakfast

Thank you to the 200+ people who attended the breakfast and joined us in congratulating 10 awardees on their outstanding accomplishments. We appreciate your support of businesses and the community.



### Member Receives Plaque

Thank you Corpus Christi Roman Catholic Church for surpassing the 10 year milestone membership with us! We're happy to have you as part of our Chamber community.



# DHM Environmental



Professional finished projects that meet specifications.

- PROFESSIONAL INSTALLATIONS •
- EXPERIENCED OPERATORS •
- MODERN EQUIPMENT •



Up to date equipment for quality service.



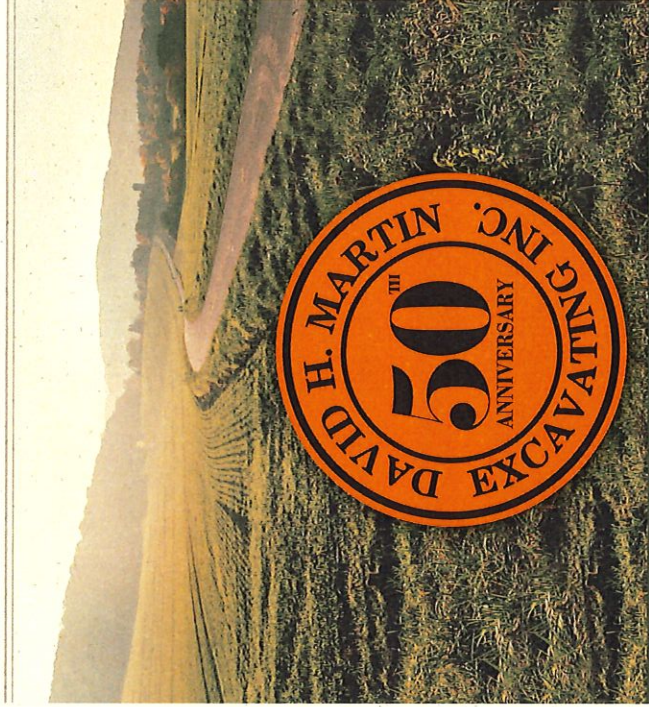
Responsibly supporting residential properties within our natural environment.

## ENVIRONMENTAL DIVISION CONTACTS:

- **Superintendent:** Kelby McGinnis - [kmcginnis@dhmexc.com](mailto:kmcginnis@dhmexc.com)
- **Division Manager:** Lynn Martin - [lmartin@dhmexc.com](mailto:lmartin@dhmexc.com)
- **Chief Estimator:** Lance Norton - [lnorton@dhmexc.com](mailto:lnorton@dhmexc.com)
- **Front Office:** [info@dhmexc.com](mailto:info@dhmexc.com)

. Committed To .

# CONSERVATION



## ENVIRONMENTAL DIVISION

4961 Cumberland Highway  
Chambersburg, PA 17202

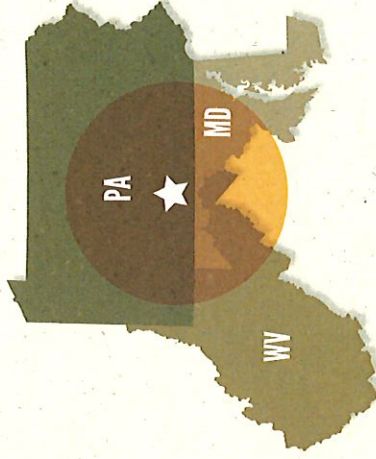
**717.264.2168**  
[www.dhmexc.com](http://www.dhmexc.com)

• EXCELLENCE AND INTEGRITY •

DHM Environmental Division is committed to the protection and improvement of our regions diverse natural resources through professional and ethical application of soil and water conservation practices.

## SERVICES

- Erosion & Sediment Control
- Temporary & Permanent Seeding
- Reforestation
- Sifted Top Soil
- Commercial & Residential Landscaping
- Pavers & Retaining Walls



Pennsylvania • Maryland • West Virginia

• FREE ESTIMATES •

**David H. Martin Excavating Inc.**

4961 Cumberland Hwy | Chambersburg PA, 17202  
Phone 717.264.2168 • Fax 717.264.0221  
[www.dhmexc.com](http://www.dhmexc.com)

COMMERCIAL • RESIDENTIAL • AGRICULTURAL



# Conservation of Natural Resources is . . .

## • our Heritage •

Since 1968, David H. Martin Excavating has been committed to protecting our environment through responsible Best Management Practices.

Our first customers were fellow farmers making land improvements to their agricultural properties.

As outdoor enthusiasts and land owners, DHM owners and employees are vested in the protection of our natural woodlands, pastures, wildlife, and fisheries.

## Our Historical Projects

- Reclamation of Neglected Lands
- Stream Restorations
- Site Protection / Township Park Improvements



Committed to the protection of the Susquehanna River and its many tributaries as well as the Chesapeake Bay Watershed.

## • our Livelihood •

### AGRICULTURAL & FORESTRY



- Manure Management Projects
- Support to Forestry Conservation
- Heritage Landscaping and Seeding

### INDUSTRIAL & COMMERCIAL



- Landfill Support
- Quarry Stabilization
- Commercial Center Retention

### RESIDENTIAL & RECREATION



- Individual and Developer Landscaping
- Athletic Fields and Parks
- Pavers, Retaining Walls, and Ponds

## • our Future •



- Partner with conservation agencies to ensure protections
- Education and sharing of "Best Practices" throughout the industry
- Ethical practices in establishing environmental protection
- Incorporate new technologies that increase protection
- Continue meeting our customers' needs

## LIKE & FOLLOW:

FACEBOOK: @DAVIDHMARTINEXCAVATINGINC

TWITTER: @DHM\_ENV\_DIV

INSTAGRAM: @DHMEXC

EXCELLENCE AND INTEGRITY • NOT JUST WHAT WE DO, BUT THE FOUNDATION FOR ALL THAT WE ARE.



MEMBER SPOTLIGHTS

## Herbruck's Poultry Ranch

5785 Sunset Pike, Chambersburg, PA 17202 | Herbrucks.com  
PA@herbrucks.com



**Herbruck's Poultry Ranch** is a fourth-generation family egg producer based in Saranac, Michigan and a leading supplier of cage-free and organic eggs for customers throughout the nation. Brothers Greg, Stephen and Herb Herbruck followed in the footsteps of their father and grandfather in leading the family business, and today the farm employs more than 800 employees in Michigan.

In recent months, Herbruck's has been working to expand their farm to Pennsylvania in an effort to better serve East Coast customers. In addition to a planned farm near Mercersburg, Herbruck's recently opened a cold storage warehouse in Chambersburg.

"As we continue the process of expanding our family farm in Pennsylvania, we're truly appreciative of the warm welcome we have received from leaders throughout Franklin County," said Herbruck's president Greg Herbruck. "The proud agricultural heritage throughout the region makes it a great fit for our family farm. We look forward to getting to know our neighbors and fellow business leaders in the months and years to come."

For more information about Herbruck's and their expansion, visit Herbrucks.com or contact Regional Project Manager Rose Plummer at pa@herbrucks.com.

## ULTA Inc.

Chambersburg Distribution Facility | 717-414-5500  
95 Kriner Rd., Chambersburg, PA 17202 | Ulta.com

**ULTA Beauty** is the largest beauty retailer in the United States offering more than 20,000 products from over 500 well-established and emerging beauty brands across all categories including cosmetics, fragrances, skin care, hair care and beauty services.

Since opening its first store in 1990, Ulta Beauty has grown to become the top national retailer operating more than 1000 stores across the country. At the core of Ulta Beauty's success is its talented team, committed to leading through a shared set of values and driving its winning culture. This is brought to life every day at the local Chambersburg distribution facility



in how they work together to give "wow" experiences to the hundreds of stores and millions of guests that they serve.

The Chambersburg distribution facility opened in 2012, and its dedicated workforce currently provides world-class logistics services for more than 245 of Ulta Beauty's retail stores located throughout the Northeast and mid-Atlantic regions. It ships more than 85 million units per year to its retail locations and an additional 2.5 million more e-commerce orders to guests up and down the east coast. In addition to fulfilling orders, the facility continues to focus on bringing the fun of beauty to all by offering rewarding careers and giving back to the Chambersburg community.

### GIVING BACK

## Scholarships for preschool



**F&M Trust** recently presented a check for \$5,000 to Shalom Christian Academy to provide pre-kindergarten scholarships for their Growing Tree Preschool. The donation is part of the bank's participation in Pennsylvania's Education Improvement Tax Credit (EITC) program.

The EITC provides tax credits to eligible businesses when they contribute to scholarship organizations, educational improvement organizations or pre-kindergarten scholarship organizations. The credits allow companies to reinvest those dollars back into their local communities. The Growing Tree Preschool program is facilitated at local area churches and uses developmentally appropriate practices to meet the physical, cognitive, spiritual, emotional and social needs of each child enrolled in the program. Please visit FMTrustOnline.com for more information.

### PA CHAMBER UPDATE

## Concerns with reentrant employment bill



The PA Chamber recently sent a memo to Senate Judiciary Committee members voicing concerns with the impact of a well-intentioned but potentially harmful bill related to employees with criminal records or who have committed a crime.

Under current law, employers may only consider a job applicant's criminal record if it relates to the job for which they are applying. Senate Bill 1043 wants to apply this standard to employment decisions



related to current employees – a reasonable concept, but one which, in practice, could create problems for employers. Under the bill, business owners might find it difficult to discipline or discharge a worker who had a felony or misdemeanor prior to employment and failed to disclose that information when lawfully asked before being hired. They might also find themselves prohibited from taking reasonable action following the arrest of an employee and pending an investigation of a serious crime, because the employment action is pre-conviction.

“This legislation essentially establishes that individuals arrested or convicted of a crime are a new protected class,” PA Chamber Government Affairs Director Alex Halper said. “While employers could attempt to defend an employment action, the burden is on them to prove the applicability of the suitability clause – a potential tall order, particularly for small businesses with limited personnel and resources.”

The PA Chamber is in favor of helping individuals from criminal records find gainful employment and avoid recidivism; and, for example, supports ‘Clean Slate’ legislation to automatically seal records of non-violent crimes after a crime-free period of time. However, S.B. 1043 would trigger unintended consequences and creates too many potential conflicts for employers.

At the committee meeting, the committee chairman noted the PA Chamber’s concerns and opted to hold off consideration of the bill.

*This article was written by the Pennsylvania Chamber of Business and Industry. For more information, visit PaChamber.org.*

*Real Estate*

**Lee & Associates of Eastern PA**

Joel Kreider  
4550 Lena Drive, Suite 104  
Mechanicsburg, PA 17055  
(717) 695-3840  
www.lee-associates.com/pennsylvania  
jkreider@lee-associates.com

*Health & Fitness*

**Over Achieve Fitness**

Aaron Cox  
1320 Lincoln Way East, Suite 1A  
Chambersburg, PA 17202  
(717) 658-1659  
www.over-achievefitness.com  
mike@over-achievefitness.com

*Security Services*

**P2 Investigative Solutions, LLC**

Robert D. Peterson, Jr.  
PO Box 101  
Chambersburg, PA 17201  
(717) 446-3844  
www.p2investigations.com  
P2investigativesolutions@gmail.com

*Non-Profit Organizations & Associations*

**Sweet Grace Ministries**

Katy Dortenzo  
77 Horst Avenue  
Chambersburg, PA 17201  
(717) 414-7772  
www.sweetgraceministries.com  
sweetgraceministries@gmail.com

**MAY MILESTONE ANNIVERSARIES**

*60 Years*

**Noelker and Hull Associates, Inc.**

*35 Years*

**Essis & Sons - Carpet One**

*30 Years*

**Main Street Deli  
Twin Bridges Campground**

*25 Years*

**Comcast Spotlight  
Gartenberg Jewelry  
The Orchards  
The Storage House/  
Mower Meadows  
Properties**

*15 Years*

**Centre Publications, Inc.  
Helping Hands Home  
Care  
Kenny’s Grill & Ice  
Cream**

*10 Years*

**Danfoss  
Renfrew Institute  
Shafer Equipment Company  
Spicher’s Appliance & Security**

*5 Years*

**1st Ed Credit Union  
Franklin Orthodontics  
PA Media Group**

*1 Year*

**A & K Settlements LLC  
Campbell Insurance & Investments,  
LLC - All State  
Farmers Insurance Group  
Franklin County Military Outreach  
Program  
Leroy’s Lawn Service LLC  
PA Starz, Inc.**

**JUNE MILESTONE ANNIVERSARIES**

*45 Years*

**Borough of Chambersburg**

*40 Years*

**Drake Orthodontics**

*35 Years*

**Occupational Services, Inc.**

*5 Years*

**WIPRO**

*1 Year*

**The Barrel House  
Best Western of Chambersburg  
Conewago Enterprises, Inc.  
Keystone Real Estate Settlement  
Services Inc.  
La Quinta Inns & Suites  
Sprint**



**WELCOME NEW MEMBERS**

*Attorneys*

**Eckert Seamans Cherin & Mellott, LLC**

David Twaddell  
213 Market Street, 8th Floor  
Harrisburg, PA 17101  
(717) 237-6000  
eckertseamans.com  
dtwaddell@eckertseamans.com

**ServiceMASTER Restore**  
**24 Hour Emergency Response**

- Fire
- Water
- Mold



**717/267-2223**  
**www.smprofclean.com**

IICRC Certified Disaster Restoration Company, family owned and operated since 1985



# CHAMBERS FEST

JULY 14-21

Restaurant Week, Scoop-a-palooza,  
Old Market Day, 1864: The Burning,  
Downtown Events & More!

Celebrate the 32nd Annual ChambersFest

## Fun for the Whole Family!



**Enjoy exciting events including:**

Restaurant Week • Cook Race • Scoop-a-Palooza  
Old Market Day • 1864: The Burning • Second Saturday  
Movie Screenings • And Many More!

Event Schedule: [Chambersburg.org/ChambersFest](http://Chambersburg.org/ChambersFest)

Special Thanks to Our Corporate Sponsor



Special Thanks to Our Premier Sponsors

**F&M Trust**  
**Penn National Insurance**





**Date:** July 14-21, 2018

**Location:** Throughout Chambersburg

**Projected Attendance:** Thousands!

**Contact:** Lark Plessinger, communications manager, 717-264-7101 ext. 206, lplessinger@chambersburg.org

**About the event:** Thousands of people enjoy ChambersFest every year. This community celebration is a weeklong festival in July that salutes the spirit of Chambersburg's townspeople. Sponsors enable the Greater Chambersburg Chamber of Commerce to offer and promote events for the community while boosting the area economy. More than that, sponsors greatly benefit through sponsorships in a number of ways:

- Showcase your business** in front of thousands of area residents and visitors.
- Build brand recognition** for your company.
- Show community support** with your investment to the area.
- Attract potential clients** through your involvement.

Available sponsorships for 2018 include:

**ChambersFest Corporate Sponsor - \$1,000**

- Logo featured on Greater Chambersburg Chamber of Commerce promotions for ChambersFest (including the Chamber's website, newsletter, e-blasts, flyers and more).
- Logo positioned on the ChambersFest banner, which is displayed throughout the entire month of July.
- Logo featured on the back of the Tim & Susan Cook Memorial Race T-shirts (race is on July 8 with 100+ runners).
- **New!** Logo featured on ChambersFest Restaurant Week promotions as space allows
- Company name featured in ChambersFest advertisements in newspapers and publications.
- **New!** Company name featured on Facebook Event page reaching more than 2,000 people
- Mentions of sponsorship on VerStandig's four radio stations: 92.1 Hits FM, 104.7 WAYZ, 1380AM, 101.5 Bob Rocks
- One 3"x5" block ad in the Chamber newsletter and one square ad in the e-news, to be used in 2018 - *\$144 value.*

**ChambersFest Premier Sponsor - \$500**

- Company name listed in promotional materials (including website, newsletter, flyers, advertisements and more).
- Company name featured in ChambersFest articles.
- Two square ads in the Chamber e-newsletter, to be used in 2018 - *\$90 value.*

**ChambersFest Benefactor Sponsor - \$300**

- Company name listed in most promotional materials (including website, newsletter and more).
- One square ad in the Chamber e-newsletter, to be used in 2018 - *\$45 value.*

**ChambersFest Contributor Sponsor - \$100**

- Company name listed in most promotional materials (including website, newsletter and more).

**[Yes, I would like to sponsor ChamberFest 2018!](#)**

Company Name (as you want it to appear in listings) \_\_\_\_\_

Contact Name \_\_\_\_\_ Phone \_\_\_\_\_

Email \_\_\_\_\_ Sponsorship Amount \_\_\_\_\_

I understand that the submission of this form confirms commitment from the company above for this sponsorship.

Signature \_\_\_\_\_ Return form to Lark Plessinger, communications manager: Mail to Chambersburg Chamber of Commerce, 100 Lincoln Way East, Suite A, Chambersburg, PA 17201; email to [lplessinger@chambersburg.org](mailto:lplessinger@chambersburg.org) or fax 717-267-0399.



MEMBERS IN THE NEWS

Patricia Motter, president and CEO of **Interfaith Housing Alliance, Inc. (IHA)** recently announced her retirement after nine years in the company. During that time, IHA expanded with the development of seven affordable housing communities and 299 units of affordable housing, more than 80 home ownership closings and the expansion of support services and counseling programs. Motter attributes this to a strong and dedicated staff, and she expressed pride in the work that has been done on behalf of those who need housing stability. Motter plans to assist IHA with the transition and other development initiatives through the end of June, or longer.

**Smith Elliott Kearns & Company, LLC (SEK&Co)** was recently notified by the Peer Review Committee of the American Institute of Certified Public Accountants (AICPA) that it has successfully completed an independent quality review of its accounting and auditing practice. The quality review was conducted by the national firm of Cherry Bekaert LLP under the guidelines established by the AICPA. The reviewers made an independent assessment of the firm's quality control policies and procedures and inspected the working papers and reports on a representative sample of accounting and auditing engagements. SEK&Co received the highest rating possible on its peer review, which puts SEK&Co in an extremely elite group of CPA firms. A copy of the peer review report is available at sek.com.

As one of the largest specialized auto dealership accounting practices in the mid-Atlantic region, **Boyer & Ritter** is honored to provide the National Automobile Dealers Association (NADA) with professional support and technical analysis and, as one of three firms, to prepare the NADA's new comprehensive guide to the Tax Cuts and Jobs Act of 2017. NADA's "Dealer Guide to the Tax Cuts and Jobs Act of 2017" includes guidance from Boyer & Ritter's Dealer Services Group, recognized leaders when it comes to helping franchised automobile and truck dealerships find the right business solutions.

The **Boys & Girls Club of Chambersburg and Shippensburg** recently announced the placement of Maggie Lattin as executive director. Lattin has served as the site director for the Boys & Girls Club of Shippensburg, and has been working with the organization for almost two years. She is passionate about helping kids and teens exceed their potential, and is ready to lead the way in reaching the Club's strategic goals in Chambersburg and Shippensburg. Lisa Saliga will replace Lattin as site director for the Shippensburg Club. Previously the assistant site director, Saliga is experienced in working with kids in the Club's programs and providing quality leadership to the youth of the community.

It's no secret that cases of consumer fraud, stolen documents and identity theft are on the rise. Let the **First Community Bank of Mercersburg** help you safeguard your personal information. Bring your papers for on-site shredding and help protect your identity. All the paper shredded is destroyed in the safest and most secure way by **Absolute Document Destruction**. The next free community shred day will be May 4, from 10 a.m. – 2 p.m. at the First Community Bank of Mercersburg Chambersburg Office. Please note there is a five box per individual/company limit. Please do not bring 3-ring binders, binder clips or hanging files. Your cooperation will enable us to better serve everyone.

**F&M Trust** is pleased to announce the addition of Chad Rydbom as

assistant vice president, business banker for the bank's Chambersburg market. Rydbom will be responsible for developing new business and managing existing client relationships. His experience includes more than fifteen years in the financial services industry and he was most recently employed by Orrstown as a business development officer. Rydbom is a graduate of Penn State University where he obtained a Bachelor of Science in marketing. He is an active member of the Rotary Club of Shippensburg and is a member of the board of directors at the Chambersburg Memorial YMCA. Rydbom will be based in the F&M Trust Community Office located at 870 Norland Ave., Chambersburg.



Throughout 2017, **Baxter Group, Inc.** faced multiple challenges that come with growing a business, but several employees showed great perseverance and determination during the process. Baxter Group, Inc. was proud to award several promotions and would like to recognize the following employees: Heather Bess was promoted to director of operations, Jason Young was promoted to indoor environmental consultant, Amanda Yeager was promoted to project manager for the Radon Division and Melissa Geyer was promoted to foreman for the Mold Division. Baxter Group, Inc. would also like to recognize their new employees: Miriam Vason, Susan McCarty, Stefany Kriner, Matthew Carr, Craig Yetter, Rick DeShong, Wesley Wertz, Patrick Wade and Mike Mione. Baxter Group, Inc. appreciates all their employees, new and old, for working together as a team as they grow.

**East Coast Green** recently hired Gary Huntsberger, of Hagerstown, as its new lawn and landscape maintenance manager. His career in lawn and landscape maintenance began in the early 1990's with J.C. Ehrlich Pest Control Company. Huntsberger went on to become a licensed and certified commercial pesticide applicator in turf, ornamental and industrial weed, while working for Botanica Services Landscape Maintenance Company. Later, he began operating Greenkeeper Lawn Service Inc., a landscape maintenance company which offered lawn, tree, shrub and vegetation control services until 2017. Huntsberger is certified through the University of Maryland, Department of Agriculture for integrated pest management in landscapes, as well as licensed and certified for nutrient management to apply fertilizer on turf. He can be reached directly at 717-377-5261 or at ghuntsberger@eastcoastgreen.net.



Recently, Penn State President Eric J. Barron and **Penn State Mont Alto** Chancellor Francis K. Achampong were joined by other Penn State administrators and local community leaders for a ribbon-cutting ceremony to celebrate the opening of the Mont Alto LaunchBox - a business incubator funded by Penn State's Invent Penn State initiative. Located at 40 N. Second St. in Chambersburg, the Mont Alto LaunchBox is an innovation hub offering free resources and support to entrepreneurs in a co-working space to help business startups. It is open to the Penn State community and the general public. For more information, contact Debra Collins, director of public relations and marketing, at





dlc43@psu.edu or 717-749-6112.

**Summit Health** and WellSpan Health have announced plans to pursue an affiliation that would enhance community-based health care across central Pennsylvania and within Franklin County and its surrounding communities. The governing boards for both organizations have approved a Memorandum of Understanding, a non-binding document which establishes a framework for a definitive agreement and outlines the goals of the potential affiliation, under which Summit Health would become a part of WellSpan Health's nonprofit, community-based system of care. The next steps include a period of formal due diligence, the development of a definitive agreement and regulatory review. According to the CEO of WellSpan Health, the proposed affiliation would bring together the talents of the leaders and clinicians of Summit Health and WellSpan Health to improve health across central Pennsylvania while maintaining and enhancing the local system of health care in Franklin County and surrounding communities.



**Totem Pole Playhouse** will hold local auditions for their upcoming 2018 season on April 7 from 12 - 2 p.m. in the rehearsal hall of Gettysburg College's Majestic Theater, 25 Carlisle St., Gettysburg. Totem Pole is seeking both union and non-union performers between the ages of 20 and 50 years for ensemble and supporting roles for their upcoming summer productions of "Joseph and the Amazing Technicolor Dreamcoat" and "Mamma Mia!" Those interested in auditioning should be prepared to sing 16 bars of a song that demonstrates their vocal range and abilities; an accompanist will be provided. Visit TotemPolePlayhouse.org for more information.

Four **Wilson College** seniors recently presented the results of their research and one was recognized for her oral presentation at the 94th Annual Meeting of the Pennsylvania Academy of Science (PAS), the Indiana University of Pennsylvania. The following Wilson students presented research: Karis Daniel of Ontario, Canada; Amanda Haase of Culpepper, Va.; Kirstin Lehman of Coopersburg, Pa.; and Deborah Riffard of Harrisburg, Pa. Daniel, who is majoring in biology, placed second in the oral presentation category for her research project, "Validating Fecal DNA Technologies for Ungulate Conservation." Haase, a biology and chemistry major, presented her research project, "Comparison of Factors that Affect the Ethanol Concentration in Blood during Putrefaction." Lehman, who is majoring in biology and veterinary medical technology, presented her research project, "Investigation of Possible Points of Contamination by Lactobacillus and Pediococcus in a Microbrewery." Lehman's undergraduate research was done in collaboration with Roy Pitz Brewing Co. Riffard, a biology major, presented research on "The Effects of Probiotics on Canine Weight and Fecal Fat Content."



of  
at

Recently, **Schaedler Yesco Distribution, Inc.** concluded their two-day Expo held at the Hershey Lodge and Convention Center in Hershey, Pennsylvania. Schaedler Yesco is a full-service electrical distributor founded in 1924. This year's event attracted over 1600

attendees from across the Commonwealth. It featured 98 manufacturer exhibits and offered 50 seminars and training opportunities to attendees. The Expo featured hands-on labs, booth demonstrations and an "Ask the Inspector" area hosted by the International Association of Electrical Inspectors. Participants were widely varied from electrical contractors to industrial automation and facilities managers and procurement professionals to principals. This year, over 200 students also attended as part of a specially planned "Student Day."

The **Chambersburg Community Theatre** will present "Oklahoma" the weekends of May 11-13 and 18-20. Rodgers and Hammerstein's first collaboration set the standards and established the rules of musical theatre that are still being followed today. Tickets and more information available at CCTonline.org.

The **Council for the Arts** will continue its community art classes, including "Observational Drawing" and "Corks & Canvas." They will also begin "Colored Pencil Portraiture" (featuring a new, longer format) in May and host "Curvy, Crazy & Creative," a glass-painting event on Thursday, June 7.

The **H. Ric Luhrs Performing Arts Center** at Shippensburg University will host "John Crist and the Good Medicine Comedy Tour" on May 13 at 7 p.m. On June 2, a dynamic group featuring some of America's top musicians will perform "Resurrection - A Journey Tribute." Each show features one brilliant hit single after another, offering the perfect fusion of songs to transport audiences to the glorious age of arena rock. Go to LuhrsCenterBoxOffice.com for more information and to purchase tickets.

Join the **Franklin County Old Jail** for "Break Out of the 1880 Jail with the Gold Bar," an escape room event the weekends of May 4-6 and 18-20. Teams of six to eight people will escape the 1880 cell block and find the hidden gold bar. Can you do it in under an hour? Teams must preregister and prepay to reserve a slot. On June 1-2, get ready for "Stories Behind the Stones; Cemetery Tour." Small groups will meet at the Old Jail and walk to Cedar Grove Cemetery, where they will meet living history actors portraying interesting people buried in Cedar Grove. For more information, visit FranklinHistorical.org.

The **Capitol Theatre Center** will host their Blues, Brews & Barbecue Back Lot Party on Saturday, May 5. The 8th annual event will feature live bands, craft and domestic beer and barbecue. For event information, to purchase tickets or preview the bands, go to TheCapitolTheatre.org.

The **Franklin County Visitors Bureau** and the **Capitol Theatre Center** are partnering for the annual music event, A Capella & Unplugged. Returning for its fourth year, the competition is a search for local musical talent. Round one will take place on June 16 at 7 p.m. Go to ExploreFranklinCountyPa.com for information.

For the third straight year, **Boyer & Ritter** CPAs and Consultants was recognized by Accounting Today magazine as one of the top Mid-Atlantic accounting firms - one of only five Pennsylvania firms to make the list. The magazine bases its rankings on a firm's level of revenue that sets them in the top tier of their region. In February, Pennsylvania Business Central also named Boyer & Ritter among the "Top 100 Organizations" in the state for the third year in a row.

*Do something good? Have news to share? Submit an item for Members in the News to Laiton Suders at lsuders@chambersburg.org*





**SAT JULY 14 / 11AM-3PM**

**@Chambersburg Area Senior High School**

**Enjoy all-you-can-eat ice cream samples  
from local ice cream shops & vote for your favorite!**

### **Sponsor Opportunities**

#### **2 Scoop Sponsor - \$500**

- *Company name listed on event website and event promo materials as space allows*
- *Opportunity to set up a promotional table*
- *10 tickets to attend the event*
- *Company name listed in newsletter recap article*

#### **1 Scoop Sponsor - \$300**

- *Company name listed on event website and event promo materials as space allows*
- *Opportunity to hang a banner at event*
- *6 tickets to attend event*
- *Company name listed in newsletter recap article*

**Buy your tickets at**

**[ScoopaPalooza.org](http://ScoopaPalooza.org)**

*or at the Chambersburg Heritage Center & Gift Shop, 100 Lincoln Way E.*



# Tim & Susan COOK Memorial RACE

2018



In memory of Tim & Susan Cook

## Sponsorship Opportunities

**Date:** Saturday, July 14, 2018    **Location:** Chambersburg Memorial YMCA    **Projected Attendance:** 130+

**Contact:** Robin Harmon, 717-264-7101 ext. 205, rharmon@chambersburg.org

**About the event:** The Tim & Susan Cook Memorial Race is a 1 mile run/walk in honor of the Cooks to raise money for two scholarships awarded to Chambersburg Area Senior High School students. Proceeds are donated to the CASD Foundation. The Cook Race is part of the larger ChambersFest celebration occurring for a week in July.

**T-Shirt Sponsor - \$700 - FastInk has right of first refusal for 2018** - Sponsor will receive these benefits:

- Company logo featured on back of the race T-shirt
- Opportunity to set up a table after the race while results are being tallied (approximately 45 min. to 1 hr.)
- Logo featured on event webpage
- Logo featured on event promotional materials as space allows (company name listed when logo is not included)
- Company name listed on sign at the registration table
- Mention during the results ceremony as the T-Shirt Sponsor
- Logo featured in newsletter recap article

*Registration Open!!!  
Chambersburg.org/Events*

### **Race Premier Sponsor - \$500**

- Company logo featured on the event webpage
- Company logo listed on back of race T-shirt
- Company name listed on event promotional materials
- Opportunity to set up a table after the race while results are being tallied (approximately 45 min. to 1 hr.)
- Company name listed on sign at the registration table
- Mention during the results ceremony as a Premier Sponsor
- Company name listed in newsletter recap article

### **Race Benefactor Sponsor - \$100**

- Company name listed on the event webpage
- Company name listed on back of T-shirt
- Company name listed on sign at the registration table
- Company name listed in newsletter recap article

Yes, I would like to sponsor the 15<sup>th</sup> Annual Tim & Susan Cook Memorial Race

Company Name (as you want it to appear in listings) \_\_\_\_\_

Contact Name \_\_\_\_\_ Phone \_\_\_\_\_

Email \_\_\_\_\_ Sponsorship Amount \_\_\_\_\_

I understand that the submission of this form confirms commitment from the company above for this sponsorship.

Signature \_\_\_\_\_

Return form to Robin Harmon: Mail to Greater Chambersburg Chamber of Commerce, Attn: Robin Harmon,



# Franklin County Bar Association

Invites you to

2018 - Thirty-Fourth Annual

# Book Sale

Friday, May 18th, 9 AM - 9 PM

Saturday, May 19<sup>th</sup>, 9 AM - 5 PM

Sunday, May 20<sup>th</sup>, Noon - 4 PM

Laird Hall At Wilson College  
Chambersburg, Pa



For further information:  
717-262-2326



Free Admission  
Free Parking  
Food & Drinks Available

TO BENEFIT FRANKLIN COUNTY  
LEGAL SERVICES

Thank you to our 2018 sponsors

**D** LORETO  
**O** SENTINO  
**B** OLINGER  
ATTORNEYS AT LAW

**F&M**  
TRUST

**M&T Bank** **ORRSTOWN BANK**

Law Office of  
Anne M. Shepard, LLC



# QuickBooks® Step-by-Step Training Manual Provided



**Dates:** May 16, 2018  
June 20, 2018  
July 18, 2018

**Location:** 720 Norland Avenue  
Chambersburg, PA 17201

**Time:** 9:00AM – 12:00PM



Scan QR code with mobile device for more info.

## 4 Easy Ways to Register Now!

**Call:** 800-555-9510 or 717-267-2100

**Fax Completed Registration:** 717-267-1464

**On-Line:** [www.schultheisscpa.com](http://www.schultheisscpa.com) – click on the resources link

**Mail Below Registration:** Schultheiss & Associates  
720 Norland Avenue  
Chambersburg, PA 17201

### Is Your Office Making These 21 Critical Mistakes?

- 3 QuickBooks® errors that hurt cash flow in your office.
- 5 Ways to reduce payroll headaches - the one best fix.
- 3 Mistakes to avoid in "costing" and why they hurt you.
- 3 Reports that will stop wasted expenses and overhead.
- 3 Critical errors in setting up your chart of accounts.

### Who Should Attend QuickBooks® Training?

- **Spouses** who help with the books on a part-time basis.
- **Business owners** who want to avoid mistakes and improve cash flow.
- **Partners** looking for long-term answers to accounting problems.
- **Bookkeepers** who need a better understanding of QuickBooks®.
- **First-time** users just new to QuickBooks® software.
- **Seasoned users** who want to take advantage of the advanced features of QuickBooks®.

**Course:** \$129 per person. \$100 per person if two or more attendees from same company.  
(includes continental breakfast)

**Name:** \_\_\_\_\_

**Company Name:** \_\_\_\_\_

**Address:** \_\_\_\_\_

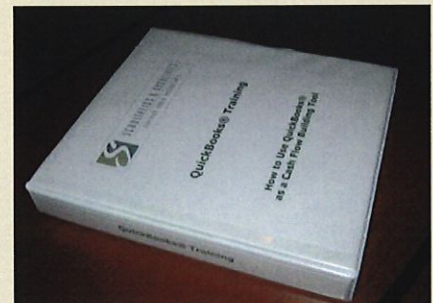
**City:** \_\_\_\_\_ **State:** \_\_\_\_\_ **Zip:** \_\_\_\_\_

**Phone:** \_\_\_\_\_

**E-Mail:** \_\_\_\_\_

**Additional Registrants:** 1. \_\_\_\_\_

2. \_\_\_\_\_



Payments Accepted: Check ♦ Cash ♦ Mastercard ♦ Visa



Visit our Facebook page – [www.facebook.com/schultheisscpa.com](http://www.facebook.com/schultheisscpa.com)



**POP-UP**

# **BEEER GARDEN**



**DOWNTOWN CHAMBERSBURG**

HERITAGE CENTER PARKING LOT, 100 LINCOLN WAY E.

**FREE ENTRY**

**5-8PM**

**LIVE MUSIC**

**BEER**

**FOOD TRUCK**

**& MORE**

**MAY 30**

MUSIC TBA

**JUNE 27**

JON INGELS

**JULY 25**

CODY WILT

**AUG 29**

KENNY FETTERMAN

GRAND SPONSOR



PREMIER SPONSOR



PRESENTED BY

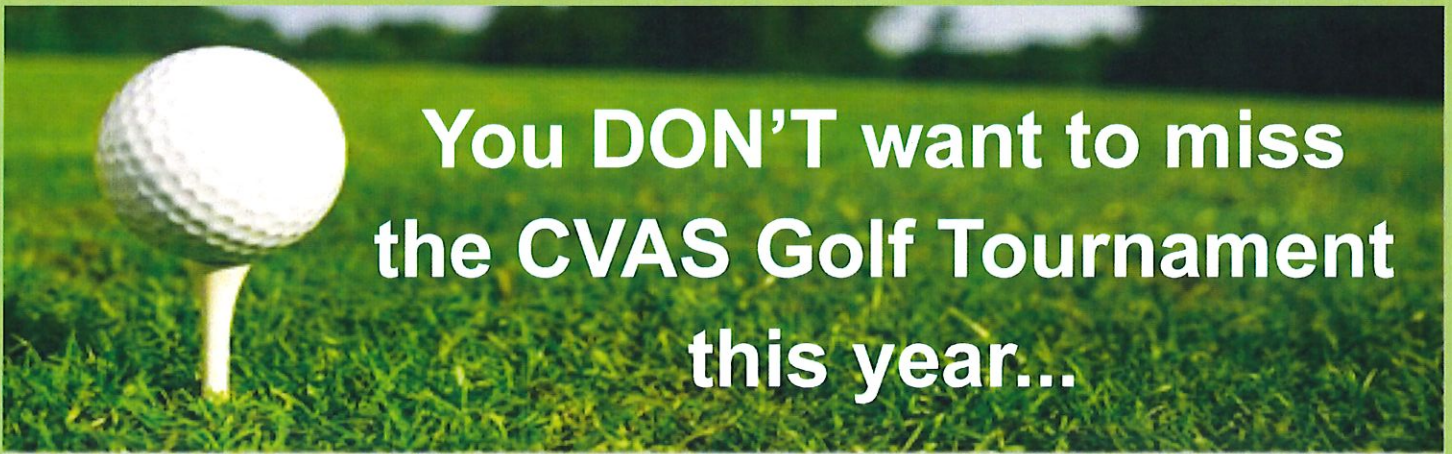


DOWNTOWN CHAMBERSBURG INC.

MUST BE 21+ WITH VALID ID TO ENTER

[WWW.DOWNTOWNCBURG.COM](http://WWW.DOWNTOWNCBURG.COM)





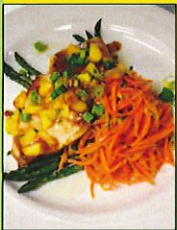
You DON'T want to miss  
the CVAS Golf Tournament  
this year...



**CASH PRIZES** for more  
than 30 golfers!



**A Restaurant Excursion raffle to  
some of the area's finest restaurants**



**A raffle for an overnight stay and  
round of golf for four people at  
Seven Springs Resort**

**Cumberland Valley Animal Shelter**  
*Seventh Annual Golf Tournament*

**FRIDAY, MAY 18, 2018**

**CHAMBERSBURG COUNTRY CLUB**  
**3646 SCOTLAND ROAD**  
**CHAMBERSBURG, PA 17202**

12:00 REGISTRATION 1:00 SHOTGUN START

**Golfer Registration Fee: \$80 per person**  
Includes golf, cart, range balls, lunch, beverages on course, dinner and awards ceremony following the game, and prizes.

For more information call 717-263-5791 or log onto [cvas-pets.org](http://cvas-pets.org)





**Greater Chambersburg Chamber of Commerce**  
 100 Lincoln Way East, Suite A  
 Chambersburg, PA 17201  
 717-264-7101  
 Chambersburg.org

PRSRTD STD  
 U.S. POSTAGE  
**PAID**  
 Permit #7  
 Chambersburg, PA

## MAY/JUNE CALENDAR OF EVENTS

### MAY

- 3** 10th Annual Cinco de Mayo Regional Mixer  
 5-7 p.m., Volvo Construction Equipment, 304 Volvo Way, Shippensburg, PA
- 10** Lunch & Learn: "Let's Get R.E.A.L." by Penn State Mont Alto  
 11:30 a.m. - 1 p.m., Chambersburg Chamber, 100 Lincoln Way E., lunch provided by Fuddruckers
- 10** Leadership Franklin County Community Graduation 2018  
 5-8 p.m., Waynesboro Country Club, 11000 Country Club Rd., Waynesboro, PA
- 14** Reflections of Italy Info Session: Chamber Travel Club  
 6-7 p.m., Chambersburg Chamber, 100 Lincoln Way E.
- 15** Leadercast Franklin County 2018  
 8 a.m. - 4 p.m., Shippensburg University, 26 Lebanon Dr., Shippensburg, PA
- 17** Natural Wonders of Costa Rica Info Session: Chamber Travel Club  
 5:30-6:30 p.m., Chambersburg Chamber, 100 Lincoln Way E.
- 17** 11/30 Network 3rd Thursday Happy Hour  
 5:30-7:30 p.m., GearHouse Brewing Co., 253 Grant St.

### JUNE

- 14** 23rd Annual Chamber Golf Tournament with Title Sponsor Spherion  
 11 a.m. registration begins, Chambersburg Country Club, 3646 Scotland Rd.
  - 14** Lunch & Learn by Highmark Blue Shield  
 11:30 a.m. - 1 p.m., Chambersburg Chamber, 100 Lincoln Way E., lunch provided by Fuddruckers
  - 30** Bermuda Cruise: Chamber Travel Club  
 Coordinated by Carol DiBiase with CruisePlanners, June 30 - July 5
- To register for these events and more, visit [Chambersburg.org/Events](http://Chambersburg.org/Events).*

## PROMOTE YOUR BUSINESS

Advertising is a crucial tool to help build brand awareness and impact your bottom line. The Chamber offers low-cost advertising as an exclusive member benefit. Our rates are designed to be affordable for any size business or organization.

For information on advertising options and rates, contact Lark Plessinger: 717-264-7101 ext. 206, [lplessinger@chambersburg.org](mailto:lplessinger@chambersburg.org).

*Our Service Vision Statement:*  
 We promise to be your **champion** in the community, **servicing your needs** to always be part of the solution.

*It's All About Community!*

The Outlook is the monthly publication of the Greater Chambersburg Chamber of Commerce. Ideas, opinions and statements expressed in articles by contributors are not necessarily those of the Chamber. Neither the publisher nor any individual associated with any branch of production, nor the advertisers, will be held liable for typographical misprints contained herein.

The Greater Chambersburg Chamber of Commerce is a 5-star accredited chamber, rated among the top chambers in the U.S., and is a member of the U.S. Chamber of Commerce and the PA Chamber Business & Industry.

**Valley Agency** COMPANY (717)264-4311  
**INSURANCE**



- Friendly Professional Service
  - Competitive Pricing from Multiple Companies
  - Stability of serving the community for over 100 years!
- "Corner of Norland & Fifth Avenues"*



UNITED STATES CHAMBER OF COMMERCE

**ACCREDITED**

