

# LEADERSHIP FRANKLIN COUNTY COMMUNITY

*David Grant—2020 Alumni of the Year*



“Dave is a pharmacist by trade coming to Chambersburg from Pittsburgh area in 1991 and soon after started to work at Chambersburg Hospital. His responsibilities increased quickly and during his time there he had responsibility for the Pharmacies, Respiratory Care, Nursing Informatics, Infusion Services, and the Emergency Departments.

After 21 years with Summit Health, Dave accepted a position at Keystone Health as their Chief Operating Officer. It goes without saying that his leadership skills were put to the test in the past year as the community looked to our major health care organizations to help us maneuver thru the pandemic. Most of us will never know what you and your health care colleague did or sacrificed to help this community - especially the most vulnerable amongst us. THANK YOU!

We do know you specifically spent time involved with decision making for COVID-19 testing and worked directly with Keystone Urgent Care staff to ensure they had what was needed and worked to bring in volunteers to help with COVID-19 testing. Dave also served as a health care resource at several Chamber virtual events to better educate our business community about what was going on and explain the data available.

Dave is dedicated to this community serving on the Healthy Franklin County Board, the Opioid Task Force, the Greater Chambersburg Chamber of Commerce BOD, LFC Youth Steering Committee, Penn State Mont Alto Health Care Administration Steering Committee and works with local Boy Scouts.

In his spare time, Dave is working on his MAS in Population Health Management at Johns Hopkins. His sights are set on the future and he uses data to drive decision making.

Dave is a proficient and prepared leader always ready to jump in to help. He is a HUMBLE professional, an inspiration, great listener, a creative/innovative problem solver, sets an example and does everything with a positive attitude – respecting everyone he encounters.

Dave embodies the essence of LFC and all it strives to represent in our community. It is with great pleasure that the Alumni Committee presents this award to you.”



# LEADERSHIP FRANKLIN COUNTY COMMUNITY

*Angi Quigley - 2019 Alumni of the Year*



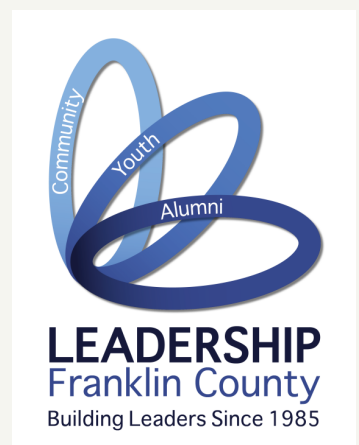
*"The true price of leadership is the willingness to place the needs of others above your own."*  
~Simon Sinek

Angi volunteers for several organizations, serving on the boards as well as "just" providing assistance and support where needed. She has served on the Chambersburg Chamber Foundation Board and currently chairs the Downtown Chambersburg Inc. board leading efforts with their mission and fundraisers like CrabFest. In 2018 she was named the Greater Chambersburg Chamber of Commerce Volunteer of the Year recipient.

Angi was the mentor for my LFC project team and was always available, regardless of what else she might have had going on. She provided a gentle hand of guidance where needed but showed us that she trusted us to figure things out on our own. The fruits of her efforts are evident in how the members of my team have gone on to serve in various volunteer roles also.

She shows commitment to her community through her volunteer efforts in addition to her commitment to her profession. Angi has been in an accounting role since 2004, including while finishing her degree. She joined SEK CPAs in 2010. Angi is a Certified Public Accountant and has advanced to become a manager at SEK. The standards are high to earn and maintain the CPA credentials, and Angi represents them well. As a manager, she works directly with her clients, oversees the work of others, and mentors' junior staff in their professional development.

Angi also makes time for her family, friends and faith. She displays the energy, demeanor, and character of a leader in everything she commits.



# Leadership Franklin County

## Alumni of the Year

### 2018 Bill Dann

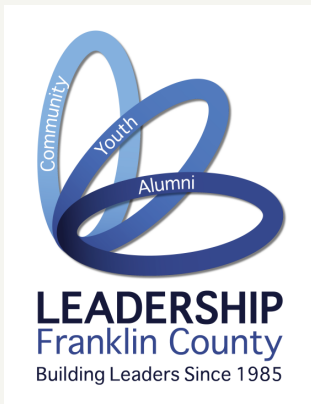
Born in Fort Myers, Florida and later moved to Chambersburg, PA when he was nine years old, Bill Dann is a proud graduate of the CASHS class of 1986 and a 1991 graduate of Penn State. Bill earned a Bachelor of Science in Structural Design and Construction Engineering Technology. Bill has spent much of his career working as a project, mechanical, or telecommunication engineer. Bill spent 20 years with Century Link in their engineering department. Currently, Bill works at RJE as a telecom engineer.

Bill is known to many as coach Dann. Bill is the President of the Chambersburg Road Runners Club, Chambersburg High School Assistant Cross-Country Coach, and race director for the Chambersburg Half Marathon. Bill demonstrates his quiet, but mighty, leadership abilities through his passionate support of the running community. All proceeds from the Half Marathon go towards 14 individual Franklin County High School Runner Scholarships totaling \$14,000.00, per year. Bill also plays an instrumental role in the Chambersburg Cash Dash, where proceeds benefit a local charity each year. The charity is selected by the primary sponsor; typically Summit Health/Wellspan and the Chambersburg Road Runners Club. Last year proceeds were given to the Therapeutic Riding Center. Bill's leadership has impacted many individuals within Franklin County community and beyond.

In addition to his charity involvement, Bill dedicates time to coaching, mentoring, and motivating high school athletes to be the best version of themselves. Bill's commitment to the student athlete body has led to many finding a healthy and rewarding hobby. Many of his former athletes still refer to Bill as coach Dann. As a 2016 graduate of Leadership Franklin County, Bill has volunteered time and resources to help with events hosted by LFC Alumni.

Bill motivates so many people by taking his passion for running and inspires not only youth but adults as well. Bill is a very humble and kind person. The work that Bill does for the community is truly impeccable. None of this would be possible without the support of his loving family, wife Sara of 27 years, and their two children, Carolyn and Spencer.





# Leadership Franklin County

## Alumni of the Year

### 2017 Eric Alleman



Eric is a 2011 graduate of the LFC Community Program and has made great contributions to the community since that time. Spurred on by his team's community service project creating the scavenger hunt at IceFest, Eric continues to volunteer at IceFest each year with the Polar Plunge Dunk Tank and the Run Your Ice off 5k. Through his efforts at IceFest funds are raised for the Leadership Franklin County Alumni Scholarship, Relay for Life, Downtown Chambersburg Inc., the Downtown Business Council and the Chambersburg Council for the Arts as well as providing wonderful supporting events for the state's largest Ice Festival. Eric is passionate in his support of Relay for Life chairing both the Franklin County Golf Tournament Fundraiser and the Annual Relay for Life. Under his leadership the Chambersburg Relay has almost doubled the amount raised from around \$40,000 to over \$70,000 in 2017. With his wife Kelly, he has also become active in the MS Walk in Harrisburg each year. In his professional life Eric is currently the Regional Sales Manager for ACNB Bank.

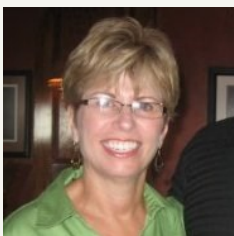
### 2016 Janet Pollard



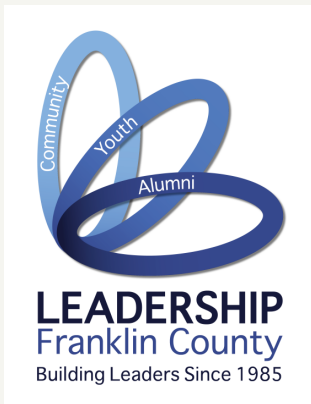
Janet is a 1998 graduate of the LFC Community Program and has a long and varied career in service to the Franklin County Community. Janet has worked in both the public and private sectors, has been published in the Cumberland Valley Journal on a wide variety of subjects, developed the Chambersburg Heritage Center, was a key partner in developing Central Pennsylvania's Civil War Trails: Prelude to Gettysburg, and revived the Franklin County Visitor's Bureau (FCVB) leading it to become an independent organization. Under Janet's leadership the FCVB has created the annual recreation of the Burning of Chambersburg, Spring into History and most recently the FCVB has purchased the vacant 15 South Main Street bank building to be renovated and become the new home of FCVB.

Janet has also been very active as a volunteer in the community. Be it as a leader in the Girl Scouts, Fayetteville Elementary Parent Teacher Association Executive Council member, Citizen's Action Committee member, state level tourist organizations such as "Once Upon a Nation" or leading a LFC Community History session, Janet shows leadership by example and mentoring to many others. Janet makes each and every day a living example of personal motivation and relentless productivity; seeking new ways to expand her reach and contribution to the betterment of every community in Franklin County.

### 2015 Brenda Hefner



A graduate of the LFC Community Class of 2003 Brenda has served on many roles in many organizations. She has served on the LFC Community Steering Committee, helped lead the strategic plan to develop not the LFC Youth and Advanced Programs, lead an update of curriculum of the LFC Youth program as committee chair, served on and chaired the Board of Directors of the Greater Chambersburg Chamber Foundation, helped found Scoop-A-Palooza, teaches Sunday school at her church, mentors youth and sings in the choir. In her professional life she has worked for Menno Haven, Patriot Federal Credit Union and Roxbury Treatment Center. Though her favorite role is that of "Mimi" to her three energetic grandsons.



# Leadership Franklin County

## Alumni of the Year

### 2014 Amy Seiders



Amy is a graduate of the LFC Community Class of 2007 and has proven herself as a committed community member in the short time since then. She is a mortgage originator for Middletown Valley Bank and has also held positions at F&M Trust, Patriot Federal Credit Union and BB&T. After graduating from LFC Community she became a coach for a project team before moving to the steering committee where she has served for 6 years, 2 of which as Committee Chair. She also gives many hours outside of work volunteering for Pop A Cork for the Capitol, CrabFeast, Oktoberfest, Scoop-A-Palooza, and Mercersburg Townfest to name a few. After completing her service with LFC Community, she moved over to the LFC Youth program to continue to help develop future leaders.

### 2013 Charles (Chuck) E. Nelson



A graduate of the 1st Leadership Program, Chuck is the former President and CEO of Sentry Trust Company and has also held various positions with Dauphin Deposit Banks & Trust Company and Valley Bank and Trust Company. In addition to his many professional accomplishments, Chuck has also served as President of the Capitol Theatre Foundation, a member of the Chambersburg YMCA Board of Trustees, a member of Menno Haven/Penn Hall Board of Directors, a member of Penn State Mont Alto Board of Directors, and has lent his time and expertise to numerous other organizations. Pam Anderson, LFC Alumni of the Year for 2011 stated, "I don't see any major community organizations that he has not been a part of." Additionally, Chuck was very instrumental in the development of the Leadership Franklin County Program and served as the 1st Chair of the Program when it was still called "Leadership Chambersburg." Chuck has added great value to our community and truly exemplifies community service and community leadership. His efforts have had an innumerable impact on Franklin County.

### 2012 Maria Banks



Maria has been involved with Leadership Franklin County for five years---since she was a student in the program. After she graduated from LFC, she joined the youth leadership steering committee, which was working to create a new program targeting high school sophomores, similar to the adult program. Shortly after joining this committee, she was recruited to be a mentor for the community program. Over the last several years, she has become a reliable, consistent facilitator and leader for both of these programs. She attends all of the youth leadership sessions throughout the year and facilitates the cultural diversity session in the community program. Her passion for youth and her vocation in mental health have added great value to our programs. Moreover, she creates a safe space for students to have an honest discussion about hard topics. In addition to her commitment to Leadership Franklin County, she is the Vice President of the Board of Director's of Network Ministries, she sits on the Healthy Communities Partnerships Community Coalition, mentors youth in the after school program at Stephen's Elementary School and is an active member of King Street Church. And those are just her service roles. Her day job is as a Behavioral Specialist and Truancy Officer for Chambersburg Area School District. Maria Banks has found the intersection of her passion, interests and skills as a leader in Franklin County.

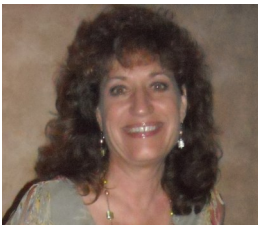


**LEADERSHIP**  
Franklin County  
Building Leaders Since 1985

# Leadership Franklin County

## Alumni of the Year

### 2011 Pam Anderson



Pam is the owner of Anderson Construction. She has a Masters Degree in Speech Pathology, which she used until her career change in 1991. Pam is past President of the Franklin County Builders Association and past chair of the National Association of Home Builders Student Chapter Advisory Board. Locally, she has chaired the Chambersburg Chamber of Commerce Board of Directors and the American Heart Association Heart Walk; is the Vice President of the United Way of Franklin County Board of Directors and was the 2011 Campaign Chair; co-chaired the Cumberland Valley Animal Shelter Campaign Committee and is honorary co-chair of the Women In Need Campaign Committee; and is a member of the Chambersburg Rotary. Pam has been honored with several awards: 1998 Franklin County Builder of the Year, 2000 Pennsylvania Small Contractor of the Year, 2005 Athena Award, 2008 Chamber of Commerce Volunteer of the Year, and 2012 Leadership Franklin County Alumni of the Year.

### 2010 Jenna Kaczmarek



Jenna is the COO Of Patriot Federal Credit Union and previously served as President and CEO of Community of Healthcare Employees Credit Union. She has served on the Board of Directors for the Chambersburg Council for the Arts and has been highly involved in the Leadership Franklin County Program. She was involved with establishing the LFC Youth Program, Chaired the LFC Community Program and is currently involved in the LFC Advanced Program.

### 2009 David Keller



Franklin County Commissioner David Keller graduated from Franklin & Marshall College in 1991 where he studied government. He continues to support Leadership Franklin County and many other community organizations. Organizations that he is or had been involved in include Franklin County Prison Board, Coyle Free Library and Franklin County Area Development Corporation.



**LEADERSHIP**  
Franklin County  
Building Leaders Since 1985

# Leadership Franklin County

## Alumni of the Year

### 2008 Marian Witherow



**Marian K. Witherow** is the founder and principal of Witherow & Company LLC, and is a certified strategic planning consultant. Her consulting efforts have spanned twenty states plus the District of Columbia. She also serves various educational institutions and non-profit agencies. Her clients include American, Swiss, and German-owned businesses. Marian holds a B.S. in Education from Indiana University of Pennsylvania where she majored in social sciences and secondary education. In 1987, she earned a MBA from Shippensburg University of Pennsylvania. She completed graduate courses at Wesley Seminary in Washington, D.C. Elected to numerous boards and executive committees, Marian K. Witherow serves as a faculty member of the Leadership Franklin County program sponsored by the Greater Chambersburg Chamber Foundation, and a board member of the United Way of Franklin County and Lutheran Home Care & Hospice. She has served as a board member and chair of the strategic planning committee for the Council for the Arts in Chambersburg, PA. Marian was a past president and founding associate of the Cumberland Valley Chapter of the Association for Quality and Participation (AQP). In 2009, she received the *Inaugural Leadership Franklin County Alumni Award*. Marian resides at Blue Ridge Summit, PA.