

**OCTOBER  
2020**



# ChamberWorks

WASHINGTON COUNTY CHAMBER OF COMMERCE

BREHAM, TEXAS

**Chairman of the Board**  
**Jay Schroeder**  
*Texas Farm Bureau Insurance*

**First Vice Chair**  
**Joe Robertson**  
*Blue Bell Creameries*

**Second Vice Chair**  
**Dr. John Turner**  
*Blinn College District*

**Secretary**  
**Paul Aschenbeck**  
*Brenham ISD*

**Treasurer**  
**Andy Hefferly**  
*Moorman Tate LLC*

**Immediate Past Chair**  
**Amanda Stolz**  
*Seidel Schroeder*

**Dr. Eric Alford**  
*Baylor Scott & White  
-The Brenham Clinic*

**Katie Burch**  
*PLANNORTH  
Architectural Co.*

**Susan Cates**  
*City of Brenham*

**Melissa Duckworth**  
*Thielemann Construction*

**Johanna Fatheree**  
*RE/MAX  
Bluebonnet Properties*

**Wendy Frazier**  
*Associated Credit  
Union of Texas*

**Aaron Gonzalez**  
*Padgett Hearing Aid Center*

**Dr. John Harris**  
*Mount Rose Missionary  
Baptist Church*

**Zelda Moore**  
*EVVAYLOIS Academy  
of School Beauty*

**Michelle Panko**  
*Barking Ranch Pet Resort*

**Ash Patel**  
*Best Western - Brenham*

**Roger Ross**  
*Coldwell Banker Properties  
Unlimited - Roger Ross*

**Jeffrey Sadler**  
*Del Sol Food Co., Inc.  
- Briannas*

**BRAZOS VALLEY**  
**GIVES**  
**OCTOBER 27 • 2020**

*A Day of Giving Powered by*  
**Community Foundation of the Brazos Valley**

*give  
where  
you live*  
**community FIRST**



**BrazosValleyGives.org**

## Chamber to serve as donation hub for Brazos Valley Gives

### *Early Giving Now Underway*

Twenty Washington County nonprofit organizations are participating in the 2nd Annual Brazos Valley Gives. Residents are encouraged to put "Community FIRST by giving where you live."

Brazos Valley Gives will be held on Tuesday, Oct. 27. Given the needs within the nonprofit community, early giving began on Oct. 1. Participating organizations include nonprofits from Brazos, Burleson, Grimes, Madison, Robertson and Washington Counties.

Participating Washington County non-profits are:

— Adult and Teen Challenge of Texas-BVMC  
— Blinn College Foundation  
— Boys & Girls Club of Washington County  
— Brenham Children's Chorus  
— Brenham Heritage Museum  
— Brenham ISD Education Foundation  
— Brenham Pet Adoption Center  
— Burton Educational Foundation  
— Camp For All  
— CASA for Kids of South Central Texas  
— Citadel Christian School  
— Faith Mission and Help Center, Inc.  
— First Baptist Church School - Brenham

— Here I Am Orphan Ministries  
— HOPE Gathering, Inc.  
— Miracle Farm  
— New Beginnings Life Ministries  
— Unity Theatre  
— Washington County Healthy Living Association  
— Washington on the Brazos Historical Foundation

A complete list can be found online at [BrazosValleyGives.org](http://BrazosValleyGives.org). If you do not feel comfortable donating online, the Washington County Chamber will serve as a hub to collect money on each nonprofit's behalf.

## "CONNECT AFTER 5"

**WASHINGTON COUNTY  
CHAMBER NETWORKING EVENT**

### Tres Chic

201 East Main St., Brenham

Thursday, Oct. 29 from 5-7 p.m.

*Unwind after work and expand your network!  
Meet other Chamber members and generate new business contacts.  
Enjoy food and drinks, learn what's new in the community,  
and exchange business cards and brochures.  
Free for Chamber members and employees!*

# Members can post free 'Hot Deals' to boost sales

The Washington County Chamber promotes a "Buy Local" campaign year-round and the holiday season is the perfect time to reinforce awareness. To boost interest prior to the Black Friday sales peak, the Chamber is assisting members to step up promotions in October and November. Statistics indicate that most holiday shopping decisions are made by Thanksgiving weekend.

The Chamber will be encouraging area shoppers to search the "Hot Deals" section of Brenham-Texas.com for ideas and inspiration. Members can now list retail "Hot Deals" online and they will be promoted on social media and in eblasts. The Hot Deals will also be published as coupons in upcoming ChamberWorks newsletters in November and December. This opportunity is no additional cost to

Chamber members.

While we know shoppers won't swear off shopping online or at a chain store, the Chamber promotes looking for ways to integrate the value of supporting neighbors' and

friends' businesses in purchasing decisions. If local residents shift even one or two purchases to independent, community-based businesses this season, it will create a dramatic, positive impact on our local economy.

Non-profit organizations in Washington County depend largely on the contributions of local independent businesses who, in turn, depend on our patronage. If we value local business support for our children's teams, schools, bands or our favorite charities, we must recognize they can't do it without us!

The long-term relationships

fostered by local businesses also cement commitment to schools, churches and civic clubs that aid not just our economic prosperity, but our community cohesion and trust.

To all who are reading this article: please do yourself and your community a favor this year by shifting a bit more spending to local merchants, service providers, artisans and others. Along with helping your neighbors and community, you may just find that "going local" turns holiday shopping into a far more relaxing and enjoyable experience. One that rewards both you and your community.

To Chamber members: please take the time to post your Hot Deals before the end of October. If you need any personal assistance with the process, the Chamber staff are ready to help! Call the Washington County Chamber at 979-836-3695 or send an email to Shae Janner at shae@brenham-texas.com.



## New Chamber Members

### BURTON EDUCATIONAL FOUNDATION

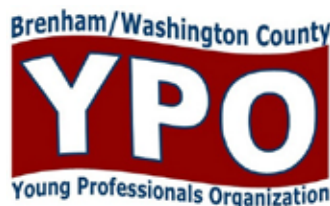
Contact: Jane Hinze, President  
P O Box 506  
Burton, Texas 77835  
Phone: 979-451-9138  
jane\_hinze@hotmail.com  
www.burtonedfoundation.org  
Education

### FAITH ACADEMY OF BELLVILLE

Contact: Dee Ann Poorman, Fundraising Director  
12177 HWY 36  
Bellville, Texas 77418  
Phone: 979-865-1811  
dpoorman@faithacademybellville.org  
www.faithacademybellville.org  
Education



**Ray L. Weiss, CLU®, FIC, CLTC®**  
Financial Consultant  
Five Star Financial Group  
ray.weiss@thrivent.com  
connect.thrivent.com/rayweiss  
Thrivent Pinnacle Leaders Group  
O 979-836-0693 | 203 S Jackson St  
Brenham, TX 77833



Would your business like to host a YPO Networking Happy Hour?  
Email WashCoYPO@gmail.com to find out details.



**ONE STOP SERVICE COMPANY**  
Residential - Commercial  
Electrical - Data Cabling  
Service Calls  
BUS: 1-866-926-6225



TECL 22459

www.bjelectricinc.com



**WILLIAM "BOO" CHRISTENSEN**  
BROKER ASSOCIATE

112 WEST MAIN STREET  
BRENHAM, TEXAS 77833  
boo@realtorboo.com

979-836-8532 OFFICE  
979-277-8426 CELL

WWW.HODDERE.COM

## Ribbon Cutting



Expansion of Service

### Here or There Massage

Owners: Ryan and Charlotte Chavez  
212-2 E Main St, Brenham

## Working for YOU.

*As a Chamber member, your promotional information is seen by thousands of people every month.*

**WALK-INS**  
Chamber of Commerce

Sept. 2020 — 302

**WEBSITE**  
www.BrenhamTexas.com

Unique Visitors  
Sept. 2020 — 4,539

Total Pages  
Sept. 2020 — 9,973



Wende Ragonis ..... President  
Jane Hinze ..... Member Services Manager  
Shae Janner ..... Business Programs Manager  
Dawn Konieczny ... Communications Coordinator  
Sarah Bryant ..... Financial Coordinator

314 S. Austin St. | Brenham, TX 77833  
979-836-3695 | www.brenhamtexas.com

## GROUP BUYING POWER

Chamber members can now get major savings on credit card payment processing.  
Learn about our new member benefit program.



Contact Will Watson at (979) 345-2988 • will.watson@infintechllc.com  
www.infintechllc.com



# September Members of the Month

**Moorman Tate, LLP**  
207 E. Main St., Brenham  
979-836-5664  
MoormanTate.com

up here and, when I graduated from Brenham High School, I never thought I would ever come back home. I did in 1976 and have never regretted it.

**We Manage Properties**  
2638 Hwy. 36 S., Brenham  
979-421-6468  
BrenhamRent.com

**The Canyon Chick**  
220 East Alamo St., Downtown Brenham  
979-353-5541  
TheCanyonChick.com

*How long have you been in business?*

— Since 2017.

*What services do you offer?*

— We are a women's retail boutique with clothing, jewelry, accessories, shoes, home goods and much more, all at reasonable prices! And we can't forget about our new website, [www.thecanyonchick.com](http://www.thecanyonchick.com), where all of our products can be purchased and still give our chicks The Canyon Chick shopping experience.

*Tell us something unique about your business.*

— We provide a style that is known as southern vintage charm mixed with western hippie boho chic. Although selling products is an important goal, spreading the love of Jesus and creating a happy shopping experience for all of our chicks is our #1 priority!

*What do you love about Washington County?*

— We love being in a county where southern hospitality and small town pride thrive! The support shown for our small town boutique is a tremendous blessing.

*How long have you been in business?*

— 9 years.

*What services do you offer?*

— Property management and leasing.

*Tell us something unique about your business.*

— We are the largest locally owned full-service property management company in the area.

*What do you love about Washington County?*

— The sense of community.

**Century 21 Holton Realty**  
2638 Hwy. 36 S., Brenham  
979-277-9944  
HoltonRealty.c21.com

*How long have you been in business?*

— 16 years.

*What services do you offer?*

— Real estate sales.

*Tell us something unique about your business.*

— We service all real estate needs from residential, commercial to farm/ranch.

*What do you love about Washington County?*

— The sense of community.

## Promote Your Business as a Breakfast Sponsor

"Wake Up, Washington County!" These networking events are held quarterly at various locations. You will meet other members and learn about their businesses as well as have the opportunity to inform others about your products and services. You will also hear updates from the Chamber about what is going on in the community.

For Chamber members, there is no admission to attend. Two sponsors are sought for each event and it provides a huge amount of exposure and publicity. There is a site sponsorship and a food sponsorship, both \$200.

This event is a great way to promote your business. Your business name will be included on the invitations that all Chamber members receive, and you will be given recognition and additional time to talk about your business at the breakfast event.

Contact Jane Hinze at the Chamber for more info: [jane@brenhamtexas.com](mailto:jane@brenhamtexas.com) or 979-836-3695.

Thank you to our Chairman's Circle members ...



Thank you to our Presidential Level members ...



# WWW.BRENHAMTEXAS.COM



# Would you like to be a P.E.A.C.E. Partner?



This month we are focusing on INTEGRITY: choosing to be truthful in whatever you say and do.

This one can be tough to talk about, because it can require a close examination of who we are. Being honest with what we say and do means that we take responsibility when we mess up, that we don't blame others for our faults, and that we show integrity wherever we are. It can be easy to do those things in public situations and then slip up

when we think no one's looking.

Here are some ways to practice integrity this month:

- Come clean when you have made a hasty or misguided decision. You do not blame others. You apologize and move on.
- You bring mistakes on your part to light and then work hard to correct them.
- You kindly, but honestly, tell people what they need to hear in order to grow and improve their practice.

A Partner for P.E.A.C.E. (Public Education Ambassador for Community Engagement) is encouraged to share the monthly value and promote that value within the company so that possible employees and customers will see that you also support public education. It is in hopes that the adults who see these values at their workplace will share with the children in their lives who are also seeing this at school. These Core Essential Values are taught at both Brenham and Burton ISDs.

The investment is only \$50 and you and your employees can make a big impact on the future of our local workforce.

Thank you to these dedicated Partners for P.E.A.C.E. who continue to make this program a success in Washington County. They help reinforce the Core Essential Values students are learning in local public schools at their businesses and through their employee interactions:

- Ant Street Inn
- Blue Bell Creameries
- Bluebonnet Electric Cooperative
- Brenham National Bank
- City of Brenham
- Creatively Yours
- Germania Insurance
- Glasco & Company Landscaping
- Mandy Allen at Better Homes and Garden Real Estate Hometown
- Thielemann Construction Co., L.P.
- Stegent-Thielemann Plumbing
- Unity Theatre

*We would love to have more!*



## TxDOT Engineer speaks to members

TxDOT District Engineer Lance Simmons gave a small group of Chamber Members and update on projects around the county on September 30 at the Washington County Fairgrounds Event Center.

Washington County Chamber of Commerce

For members in the **Senior Services** industry to discuss the needs in the community.

**Tuesday, October 20**  
at 9 a.m.

**Washington County Chamber of Commerce**  
314 S. Austin St., Brenham

**LIMITED SEATING.**  
RSVP by emailing Shae Janner,  
at [shae@brenhamtexas.com](mailto:shae@brenhamtexas.com)

## Get Noticed...

The *ChamberWorks* newsletter is published inside *The Banner-Press* on the second Thursday of the month. Chamber members have the opportunity to advertise in this newsletter. Rates start at only \$25 per month.

Another great way to promote your organization is through targeted emails. The Chamber will forward your "e-message" to all members, as long as it meets certain criteria.



# Communication and Team Building

September marked the first session for the Leadership Washington County class of 2020. Understanding and implementing different leadership and communication styles was the focus of the session. Kurt Podeszwa from Camp For All led the day-long workshop at their amazing facility near Burton.

The session was full of activities to focus on team-building skills and

communication. The class was led through several exercises which helped each participant recognize their strengths and weaknesses in order to focus on growth. Throughout the day class members were reminded that leadership is proactive and effective leaders sometimes emerge due to their placement within an organization, not necessarily due to their position.

The day concluded with a walking tour of the camp grounds. A world unto itself, Camp For All was designed with a “can do” attitude. At Camp For All, children and adults with special needs and challenging illnesses have the opportunity to experience horseback riding, canoeing, fishing, archery, water activities, team sports, arts and crafts, nature programs, and

much more at their own level. Currently, Camp For All is offering a new kind of camp this fall. Camp For Y’All is a family-style camping experiences. Find out more at [CampForAll.org](http://CampForAll.org).

Leadership Washington County is a program of the Washington County Chamber aimed at educating and motivating current and future leaders.



Kurt Podeszwa leads the group through one of the teambuilding activities of the day.



Teams work together to try and accumulate the most items in their hoop.



Throughout the day the class had to pair up with someone new to develop a greeting or “handshake.”



Another goal was achieved as they built a bridge across the Star Place facility on campus



After team building activities and lunch, Kurt gave a presentation on Leadership.



The afternoon concluded with a tour of the grounds.

## Washington County Blue Blazers

The Blue Blazers is a club with 15-20 members and more than 40 years of tradition. They support the mission of the Washington County Chamber. The volunteers in the club act as official greeters and hosts of our community. Their activities include monthly meetings, greeting at Chamber functions, recruiting new Chamber members, and conducting ribbon cuttings and grand openings.

**Kyler Crenshaw**  
*Capital Farm Credit*

**Darlene Denman**  
*Brenham ISD*

**Joyce Dickschat**  
*Brenham National Bank*

**Shelby Dollar**  
*Bank of Brenham*

**Eddie Harrison**  
*Retired-Brenham Municipal Judge*

**Melinda Fay**  
*Cruise Planners*

**Dr. Tina Henderson**  
*Ash and Ash Consulting*

**Mandy Henke**  
*Kruse Village*

**Tammy Jaster**  
*City of Brenham-Blue Bell Aquatic Center*

**Kristie Marth**  
*Brenham Iron Works*

**Rachel Nordt**  
*Edward Jones*

**Linda Pipes**  
*Retired-School Teacher*

**Carl Prihoda**  
*Citizens State Bank*

**Kathy Randermann**  
*KTTX 106.1/KWHI 1280*

**Debra Wenckens**  
*Whatever Pops Up.*

**Christy Schlottmann**  
*Christy Schlottmann Farmers Agency*

**Brandi Trujillo**  
*Express Employment Professionals*

**Stephanie Wehring**  
*Boys & Girls Club of Washington County*

**Matt Wellmann**  
*Wellmann Insurance*

**Kristie Wensel**  
*Brenham State Supported Living Center*

# ★★★★★★★★★ Electing the President of the United States ★★★★★★★★★★

The process of electing a President was  set up in the United States Constitution.



## The Constitution requires a candidate for the presidency to be:

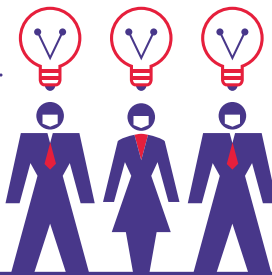
So how does one become President of the United States? The following steps outline the general process for presidential elections.



- At least 35 years old
- A natural born citizen of the United States
- A resident of the United States for 14 years

### Step 1: Primaries and Caucuses

There are many people who would like to become President. Each of these people have their own ideas about how our government should work. Some of these people can belong to the same political party. That's where primaries and caucuses come in. In these elections, party members get to vote for the candidate that will represent their party in the upcoming general election.



### Step 2: National Conventions

At the end of the primaries and caucuses, each party holds a national convention to finalize the selection of one Presidential nominee. During this time, each Presidential candidate chooses a running-mate (or Vice-Presidential candidate).



### Step 3: The General (or Popular) Election

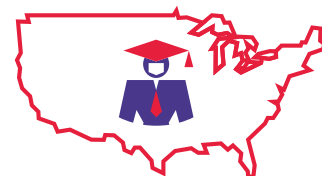
When each party is represented by one candidate, the general election process begins. Candidates campaign throughout the country in an attempt to win the support of voters. In November, the people vote for one candidate.



When a person casts a vote in the general election, they are not voting directly for an individual Presidential candidate. Instead, voters in each state actually cast their vote for a group of people, known as electors. These electors are part of the Electoral College and are supposed to vote for their state's preferred candidate.

### Step 4: The Electoral College

In the Electoral College system, each state gets a certain number of electors, based on each state's total number of representation in Congress. Each elector gets one electoral vote.



For example, a large state like California gets 55 electoral votes, while Rhode Island gets only four. All together, there are 538 electoral votes.

In December (following the general election), the electors cast their votes.

When the votes are counted on January 6th, the Presidential candidate that gets more than half (270) wins the election.

**The President-elect and Vice President-elect take the oath of office and are inaugurated two weeks later, on January 20th.**



Source: <http://bensguide.gpo.gov/3-5/election/president.html>

Infographic: Robert Pizzo for Metro Creative

## Early Voting Only

Washington County Courthouse Annex  
100 S. Park St., Downtown Brenham

October 13 - 16  
8 a.m. - 5 p.m.

October 24  
9 a.m. - 3 p.m.

October 17  
9 a.m. - 3 p.m.

October 25  
noon - 3 p.m.

October 18  
noon - 3 p.m.

October 26 - 30  
8 a.m. - 5 p.m.

October 19 - 23  
8 a.m. - 7 p.m.

## November 3 Polling Locations

Precinct #	Name of Polling Location	Address
101	Friedens Church of Washington Activity Center	20322 FM 1155, Washington
104, 117 & 121	Washington County Event Center	1305 E. Blue Bell Road, Brenham
109	St. Matthew Lutheran Church (Sandy Hill)	8819 FM 2621, Brenham
115	Silver Wings	4100 Hwy. 105 East, Brenham
203	Chappell Hill Volunteer Fire Dept.	5295 Main St., Chappell Hill
205	VFW Hall	1200 E. Tom Green St. Brenham
202 & 208	Salem Lutheran Church	1500 Salem Rd., Brenham
307 & 316	American Legion Hall	903 N. Park St., Brenham
311	St. Peter's Lutheran Church	8201 Old Gay Hill Rd., Brenham
312	St. John Lutheran Church - Prairie Hill	6605 Old Independence Rd., Brenham
320	Berlin-Millcreek-Zionsville Fire Dept.	101 Lillie Lange Rd., Brenham
406, 418 & 419	Blinn College Student Center	1007 Walter Schwartz Way, Brenham
410	Community Hall - Burton (American Legion Hall)	13100 W. Washington St., Burton
413	Emmanuel Lutheran Church	6700 Wickel Rd., Brenham
414	Pleasant Grove United Methodist Church	4950 FM 332, Brenham

[www.co.washington.tx.us/page/washington.Elections](http://www.co.washington.tx.us/page/washington.Elections)



# What's Happening in October

Oct 16, 17, 23, 24, 30, 31

## Live Music at The Kenney Store

Live music by varying artists every Friday & Saturday night. Come early for dinner. 811 S. Loop 497, Kenney (TheKenneyStore.com).

Oct 10, 11

## 19th Century Medicine Demonstration at Barrington Plantation

Before becoming president, Anson Jones made his fortune as a doctor. At a time when medicine was more art than science, what would a visit to the doctor be like? Come take a peek behind the curtain with us at Barrington as we uncover the tricks and tools of the trade. 10am-4pm, Barrington Plantation State Historic Site at Washington on the Brazos, 23400 Park Road 12, Washington. (WhereTexasBecameTexas.org).

Oct 10, 16, 17, 24

## Hot Nights, Cool Tunes in Downtown Brenham

Bring your lawn chair to the Courthouse square and enjoy some great live music with the community. Also, enjoy the Classic Car Cruise-In as well as food and beverage vendors. This event is free to the public and begins at 7pm (DowntownBrenham.com).

Oct 11

## Wine & Wags at Pleasant Hill Winery

Join us for YAPPY Hour specials. Donations of dog and cat treats or puppy and kitty food will be accepted for the Brenham Animal Shelter and Pet Adoption Center. Make sure your pups are up to date on all shots. 12-4pm, Pleasant Hill Winery, 1441 Salem Rd. (PleasantHillWinery.com).

Oct 11

## Sunday Sew-Days

October sewing project: Stuffed Pumpkin. Students may participate in all of the workshops or may "pick and choose!" All materials are provided and included in the cost of the class. Students are encouraged to bring their own sewing machine; class sewing machines available upon request.

Classes open to students ages 9 and up! Beginners welcome. 2:30-4:30 pm. Find out more information online. (SewFunSewing.weebly.com).

Oct 16-18

## Texas Arts and Music Festival

The Annual Texas Arts & Music Festival is full of live music, art, food and drinks. Downtown Brenham will be buzzing with this festival. Admission is free, parking is free, and plenty of entertainment is free! The fun starts Friday night and ends Sunday afternoon (TexasArtsandMusicFestival.com). Follow the festival on Facebook for more info and updates.

Oct 17

## Washington on the Brazos Farmers Market

Enjoy the cool weather and shop under the live oaks for all the great goodies from our local farmers. Baked goods, honey, produce and pork and beef and much more. 10am-2pm, 23400 Park Road 12, Washington (WhereTexasBecameTexas.org).

Oct 17

## Living History Saturday

Travel back in time to where a nation was born in 1836. On the third Saturday of each month, staff and volunteers dress in period clothing to bring to life the people and events of Old Washington for a unique opportunity for the entire family to discover various aspects of life during the Republic of Texas. 10am-3pm. Contact Adam Arnold at (936) 878-2214, ext. 228 or adam.arnold@tpwd.texas.gov (WhereTexasBecameTexas.org).

Oct 23-31

## LaBahia Antique Show

Dealers across the country will provide antiques, collectibles, vintage, and re-purposed items in historic 1903 LaBahia Hall, Hwy. 290W/Tx 237, Burton. Country cooking all day. Visit the website for more information (LaBahiaAntiques.com).

Oct 24

## Celebrating Freedom

The Brenham Heritage Museum is honored to display the Folk art of Lloyd Mays. Mays is a self-taught artist and poet from Washington County. The exhibit includes soul-stirring images from Mays' upbringing in Hog Branch. The exhibit will be open to the public Saturdays from 10am-4pm and Wednesday through Friday by appointment. Brenham Heritage Museum Bus Depot, 313 E. Alamo (BrenhamHeritageMuseum.org).

Oct 24

## Brenham Trade Days | Fall Market

Shop local at Brenham Trade Days for our Fall Market at the Washington County Fairgrounds in Brenham from 11am-4pm. Free admission and parking. Family and pet friendly. (TexasTradeDays.com).

Oct 24

## Plough to Plate - a 1850 Dinner Experience

On the grounds of Barrington Plantation, a historically inspired 1850's meal. Feast on Bacon wrapped pork tenderloin, caramelized carrots, rustic potatoes, orchard harvest salad, homemade bread and fruit pies for dessert. Cocktails, period entertainment and live music by Amanda's A Man's A Man Band. \$130.00 a plate and space is limited!! Tickets available for purchase at WhereTexasBecameTexas.org. Covid-19 prevention procedures outlined by the governor's office will be observed.

Oct 27

## 2020 Brazos Valley Gives

Brazos Valley Gives is 18-hours of on-line giving that brings the region together on one day and as "one community" to raise critical funding and awareness for non-profit organizations throughout the Brazos Valley (BrazosValleyGives.org).

Oct 29

## Connect After 5 - Tres Chic

Connect After 5 with fellow Chamber Members. Enjoy great networking, delicious food and refreshments. Bring plenty

of business cards to share with other members. Free for Chamber members and employees. 5-7pm, Tres Chic Boutique, 201 E. Main St., Downtown Brenham.

Oct 29-Nov 8

## "Mark Twain's - The Diaries of Adam and Eve" at Unity Theatre

Up first in Unity's Studio Series is a light-hearted look at first love and the first battle of the sexes. Visit the website for the schedule (UnityBrenham.org).

Oct 31

## Brenham Boo Bash Drive Thru Truck-or-Treat

Boys & Girls Club of Washington County will have a FREE Family Fun Night. To learn more pre-register at cityofbrenham.online/boo-bash. For your safety and the safety of the staff and volunteers please remain in the vehicle at all times. 3:30-5:30pm, Boys & Girls Club, 1710 E. Tom Greet St., Brenham.

Oct 31

## Burton Trick or Treat Trail

Trick or Treat in Downtown Burton, 5:30-7:30pm, free admission (BurtonTexas.org).

## November Highlights

Nov 1

## Brenham Better Together Community Picnic

Hot dogs, drinks, DJ music, fun, door prizes. Henderson Park., 804 Old N. Market St., Brenham, 4-6pm.

Nov 2

## Citizens Police Academy Drive Thru Meal

Brenham Citizens Police Academy Alumni Association BBQ Chicken and Sausage Dinner, 4:30-6:30pm, Brenham Fireman's Training Center, 1101 Hwy. 290 W. Contact Sherri at 979-203-0020 or Annette at 979-277-8444.

# Powerful Visibility on the Chamber Website!

People on our website have already made an important decision; they are looking for a business right here in our area.

Statistics indicate that people searching the internet are experienced, educated consumers who use the web to help make purchase decisions!

## Are you reaching this targeted market?

Many members realize the benefit of their membership and the value of targeting the market already driven to the Chamber's Online Business Directory.

It is about utilizing the web and the Chamber name to promote your business.

We have asked our Internet Marketing Consultant, Suzanne Johnson, to help you promote your business to these targeted, potential consumers using the Chamber's website.

Upgrade opportunities will be presented, including the ability to display your logo in our Online Business Directory, increase visibility to your own web link, and provide enhancements that give a professional first impression.

How to gain additional, exclusive exposure to the Chamber website traffic is something that will also be discussed.

## Stand Out from the Crowd!!

- Enhance your Listing
  - Logo, Photos/Video, Priority Placement in the Online Business Directory, expanded Character Business Description, with an additional 200 Character Description right in the Search Results
- Be Highlighted in your Business Category
  - Display a custom banner

ad as one of our Limited Business Category Sponsors

- Select Premiere Visibility on High Traffic Pages
  - Choose to become a Complete Website Sponsor – with free banner ad design and re-design
- Your **FREE Listing** on the Chamber's Online Business Directory includes:
  - Business description
  - Hours of operation
  - Driving directions
  - Personalized keywords
  - Free online job postings
  - Free online promotions

- Ability to register for Events
- Update the Chamber's database without having to call or email

The basic listings require your attention to update your business description, key word/search terms, hours of operation and driving directions to enhance your searchability.

Be watching your email for more details on how to schedule your one-on-one consultation or if you'd like to get on the list to be contacted first, you can email [suzanne@chamber-imc.com](mailto:suzanne@chamber-imc.com).



# October is Breast Cancer Awareness Month

## Breast self-exams and knowing your normal

By Baylor Scott & White Health

Throughout an individual's lifetime, many changes occur naturally to the breasts. Changes may happen during the menstruation cycle, pregnancy, when breastfeeding, and during or after menopause.

Sometimes, changes can be a sign something is wrong. Breast self-exams help identify what is normal, and when these changes may have occurred.

### Know what's normal for you

A self-exam of breasts includes both touching them and looking at them. By doing so, about once each month, it will be easy to notice any changes that may occur in density, size, color and shape.

As discussed above, it's normal to experience some changes around certain times of your cycle.

Here are the specific changes you should watch for:

- Size or shape of breasts or nipples
- Hard lumps, masses or knots in

breasts

- Hard knots in armpit area
- Dimples, puckering or ridges
- Sores, warmth or redness on breast skin
- Rashes on nipples
- Bloody nipple discharge

## CELEBRATE WITH US!

Baylor Scott & White and the Washington County Chamber of Commerce will be celebrating Paint the Town Pink on Thursday, Oct. 29.

Join us in celebrating by showing us your pink spirit! Decorate your business and encourage your teams to wear pink. We will stop by local businesses to take photos to share showing our support for breast cancer awareness.

To sign up to participate, email [Jill.Wallace@BSWHealth.org](mailto:Jill.Wallace@BSWHealth.org) by 5 pm on Oct. 26.

### Know your specific risk factors

"Breast health goes beyond just doing regular self-exams. You also need to know what the controllable risk factors are," said Dr. John McIntire, Radiology, Baylor Scott & White – The Brenham Clinic. "Things like obesity, or extra

weight, tobacco and alcohol consumption can all increase your risk for breast cancer."

Be sure to talk with your doctor to make decisions about your health that are right for you.

### Know your unique family history

Early detection is key to treating breast cancer for many people, and knowing your family history can help you remain alert to the importance of bringing your concerns to your doctor in a timely manner.

"Know which family members have had breast cancer and if certain individuals may have had recommendations to be tested for a particular gene," said Dr. Jeffrey Stoltenberg, General Surgery, Baylor Scott & White Medical Center – Brenham. "This can help your doctor determine if you need early check-ups, genetic counseling or other tests."

Every person is different – and only you know your normal. If you have concerns, don't hesitate to contact your doctor.