

HR, SAFETY & ENVIRONMENTAL CONFERENCE

**AM/NS
CALVERT**

SHOWA
Always Innovating. Never Imitating.


Alabama
Power

**BURR
FORMAN** LLP
results matter

AIRBUS

INTERNATIONAL  PAPER

 **DAIKIN**


ALABAMA TECHNOLOGY NETWORK


AJS
staffing company


ALL4


SOLA
ENVIRONMENTAL

**MANUFACTURE
ALABAMA**

ALABAMA'S TRADE ASSOCIATION FOR ALABAMA'S MANUFACTURERS



MAZDA TOYOTA MANUFACTURING

A Joint Venture Start Up and the MTM Commitment to Environmental Stewardship

Casey Allen
Assistant Manager, Environmental



MAZDA TOYOTA
MANUFACTURING



75225
COROLLA
CROSS

23444
CX-50

TeamONE
VEHICLES SOLD

MTM/ONSITE HEADCOUNT

TeamONE
GROWTH!

3300
TMS

2400
OSP

5700
TEAMONE

UPDATE

1. Joint Venture
2. Site Development
3. Pollution Prevention on Campus
4. Pollution Prevent in Shops

BEYOND JOINT VENTURE: AN ALLIANCE



MAZDA

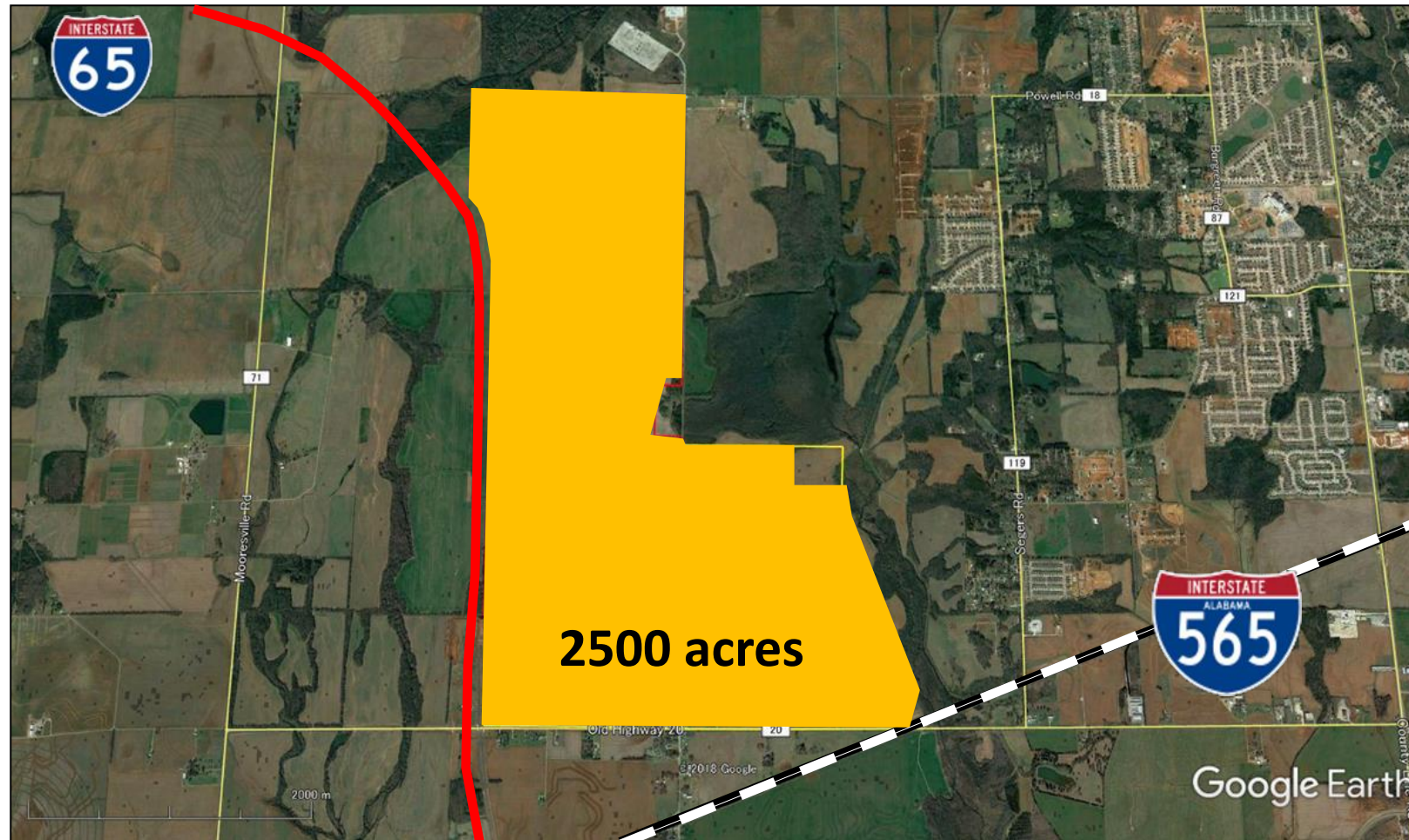
- Learn North American manufacturing knowledge
- Efficiency of shared supply base

TOYOTA

- Learn from outside to make internal change
- Strengthen North American production structure



Site Footprint



Summer 2018



Summer 2019



MTM PLANT: Summer 2021



Team ONE

Toyota Logistics Services

DNUS

Magnolia

Nippon Express

QC Audit Shop

Mazda

GMI

Central
Office

Assembly/QC

YKTA

Stamping

Paint

Body Weld

Madison
Metals

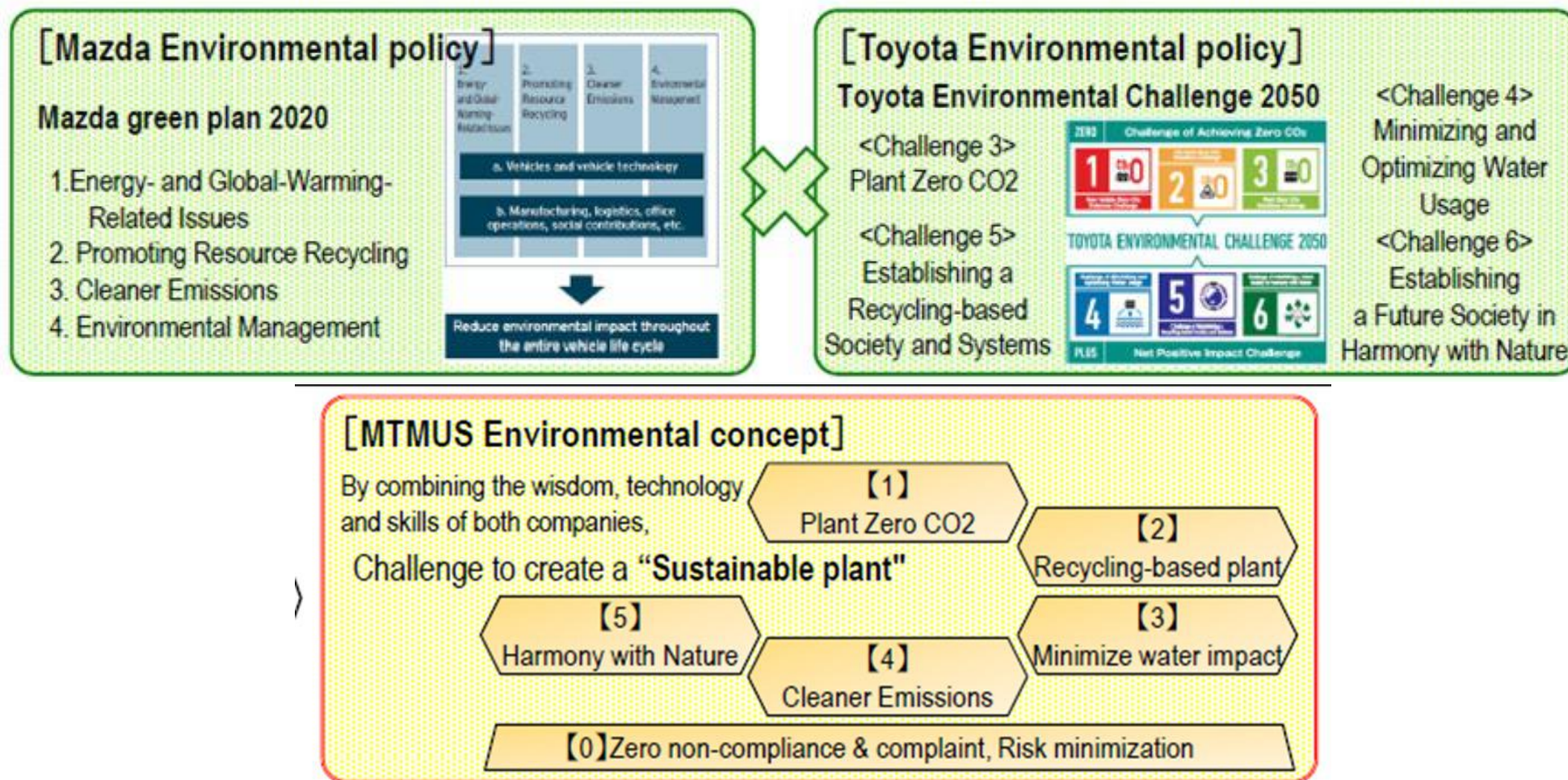
Environmental Stewardship and the MTM Commitment to Environmental Excellence on Campus

- **Sensitive Species and Critical Habitat**
- **Comprehensive Monitoring Plan**
- **Habitat Restoration Project**
- **Site Footprint**



MAZDA TOYOTA
MANUFACTURING

Environmental Concept





5 Year Comprehensive Monitoring Plan: Sunfish and Habitat

❖ Conservation Corridor:

City of Huntsville ➡ State of Alabama & Forever Wild ➡ Land Trust of North Alabama



2019 – To Current



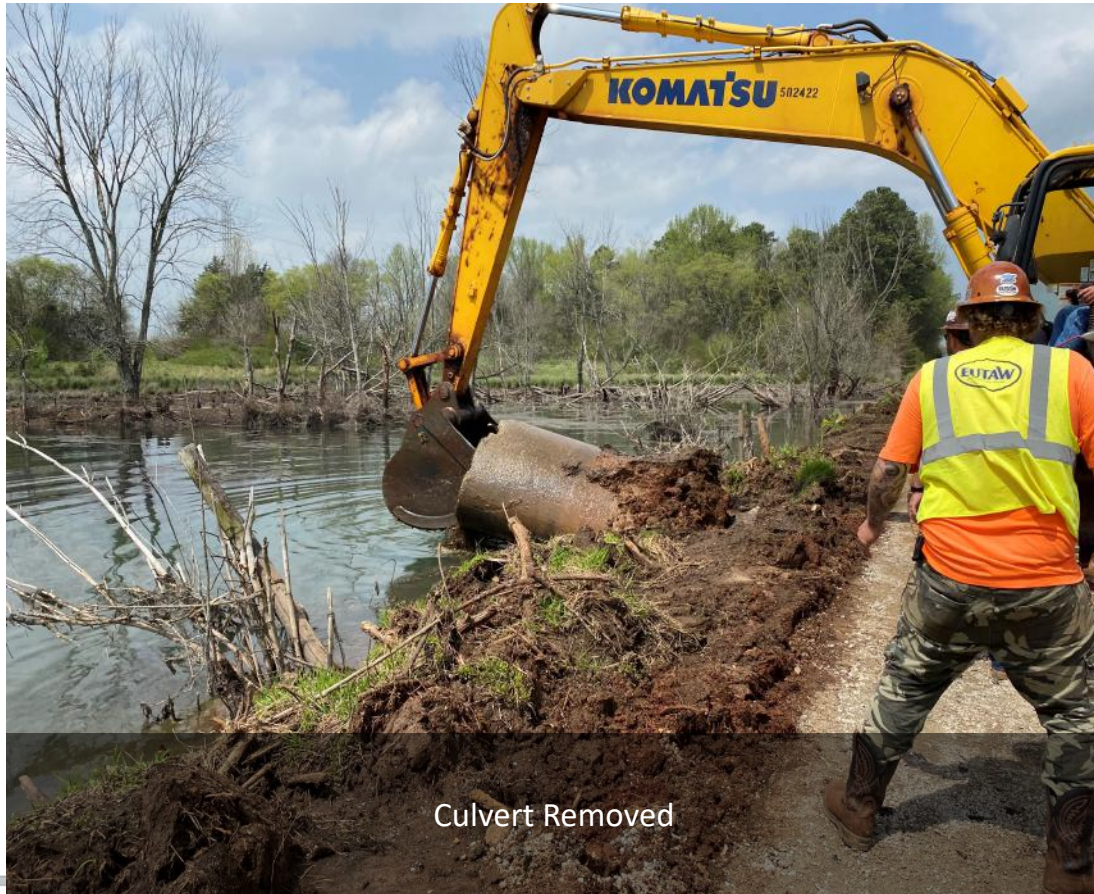
- ❑ Annual Reports Findings(2019-2020 and 2020-2021, 2021-2022) 'no significant impact'
- ❑ Overall findings showed a **10% increase** in Sunfish population in 2019 compared to the same time period in 2015-2017
- ❑ Additional 5-10% increases in two following annual reporting years



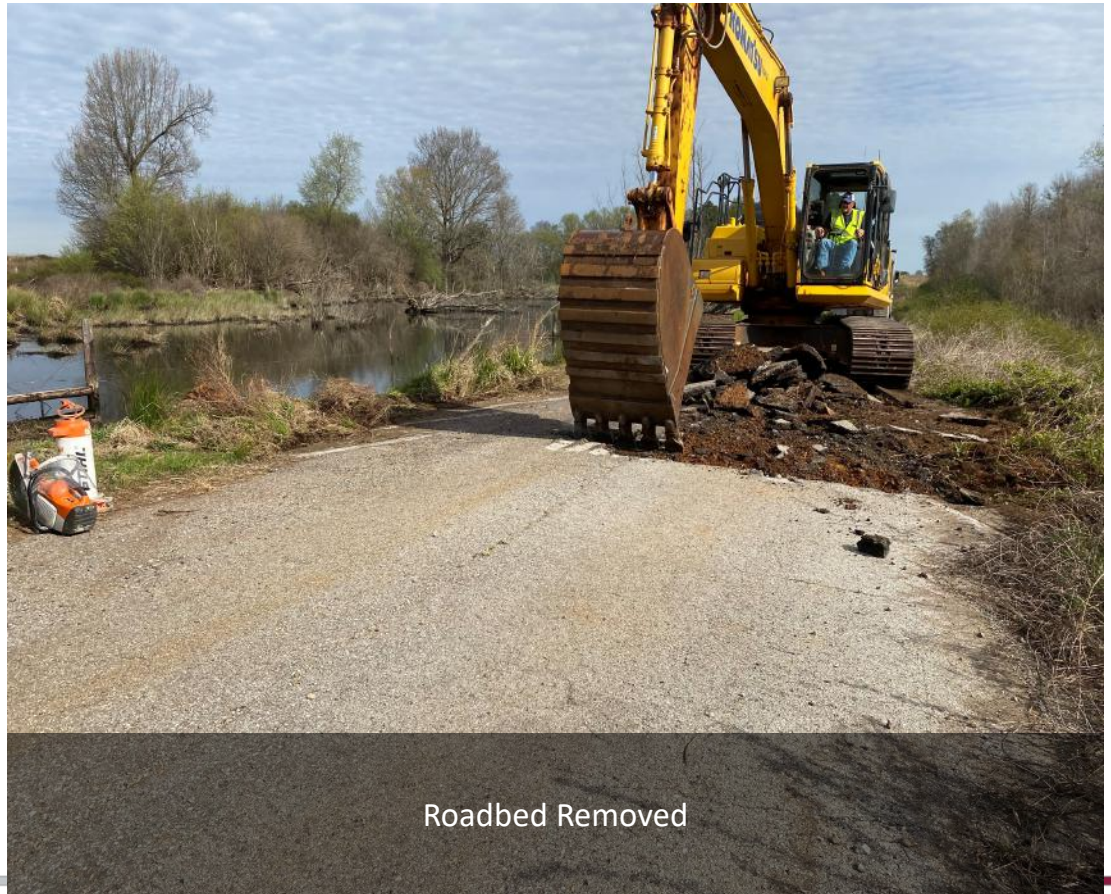
Habitat Restoration Project - Before



Habitat Restoration Project- During



Culvert Removed



Roadbed Removed

Habitat Restoration - After



Pollution Prevention in the Shops

- Air
- Stormwater/SPCC
- Waste



MAZDA TOYOTA
MANUFACTURING

Approach to Air



- Shared/Common Emissions Control Systems to support dual manufacturing lines
 - Less natural gas combustion
 - Reduces NOx emissions
 - Energy conservation

Approach to Air and Wastewater



- **Mazda's AquatechAqua-tech technology**
 - Reduce VOC and High contrast color
- **Toyota's airless paint atomizer technology**
 - Airless high efficiency clear coat



- **Eliminates:**
 - Water Use
 - Wastewater
 - Directs overspray into a dry filter system





MTM Stormwater Ponds

Northeast Pond

Southeast Pond

West Pond

Southeast Pond



Northeast Pond



West Pond



Approach to Stormwater and SPCC



Quality Audit – Gas Fill



Paint Shop – Covered Waste/Scrap Accumulation

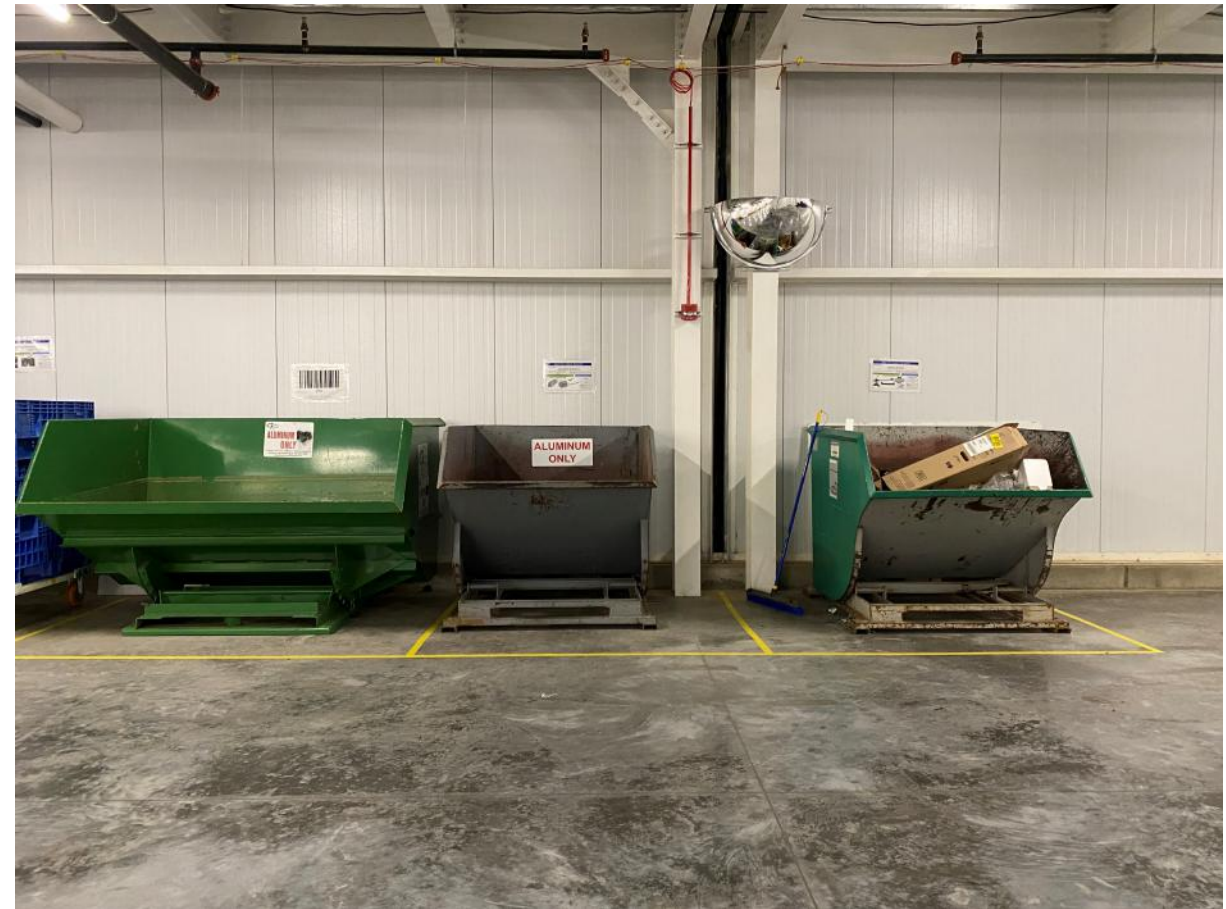
Approach to Stormwater and SPCC



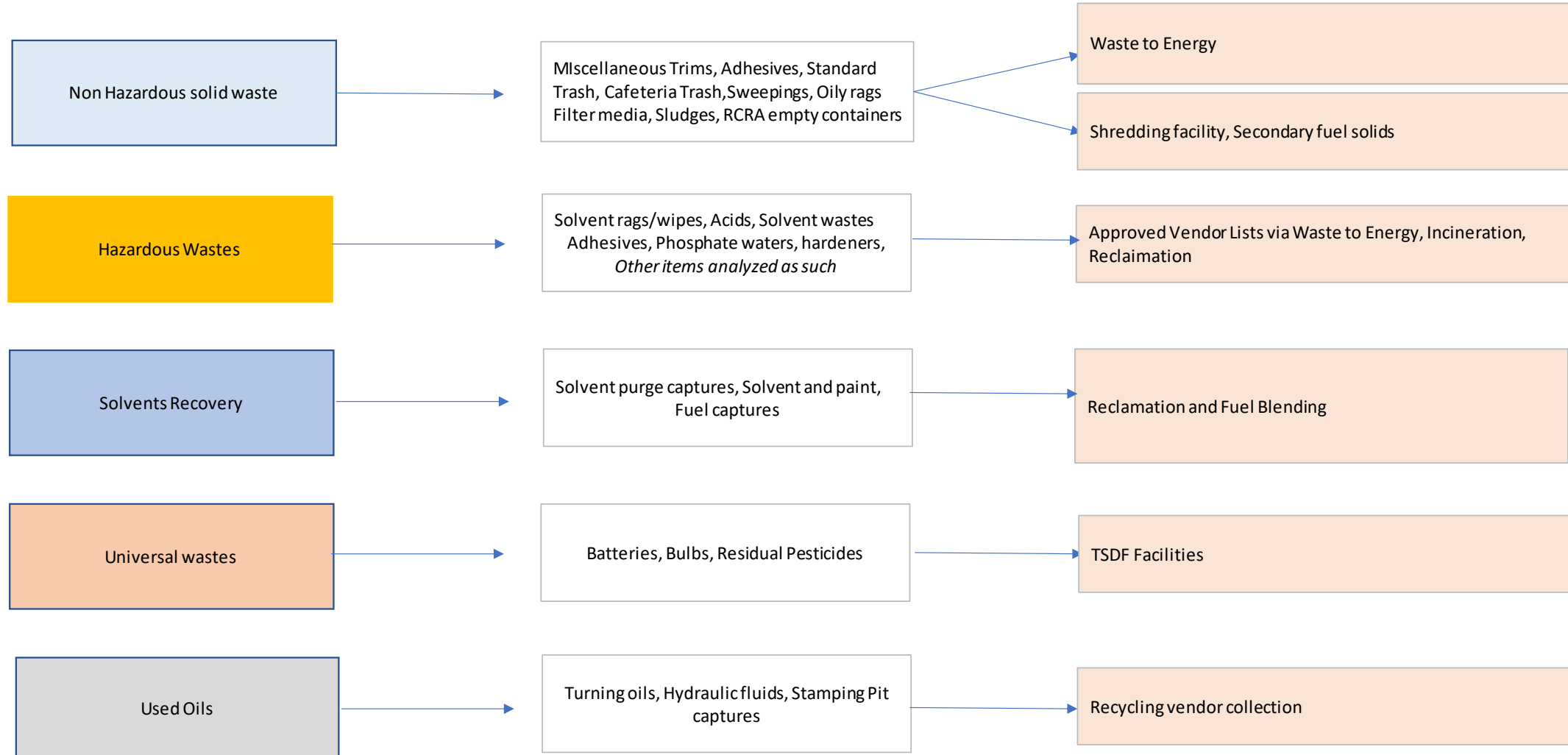
Approach to Wastes



Approach to Wastes



Approach to Waste – Zero Landfill



Thank You!

