



**EDC**  
**ISLAND**  
**COUNTY**

# Naval Air Station Whidbey Island Economic Impact Report

*Released January 2020*

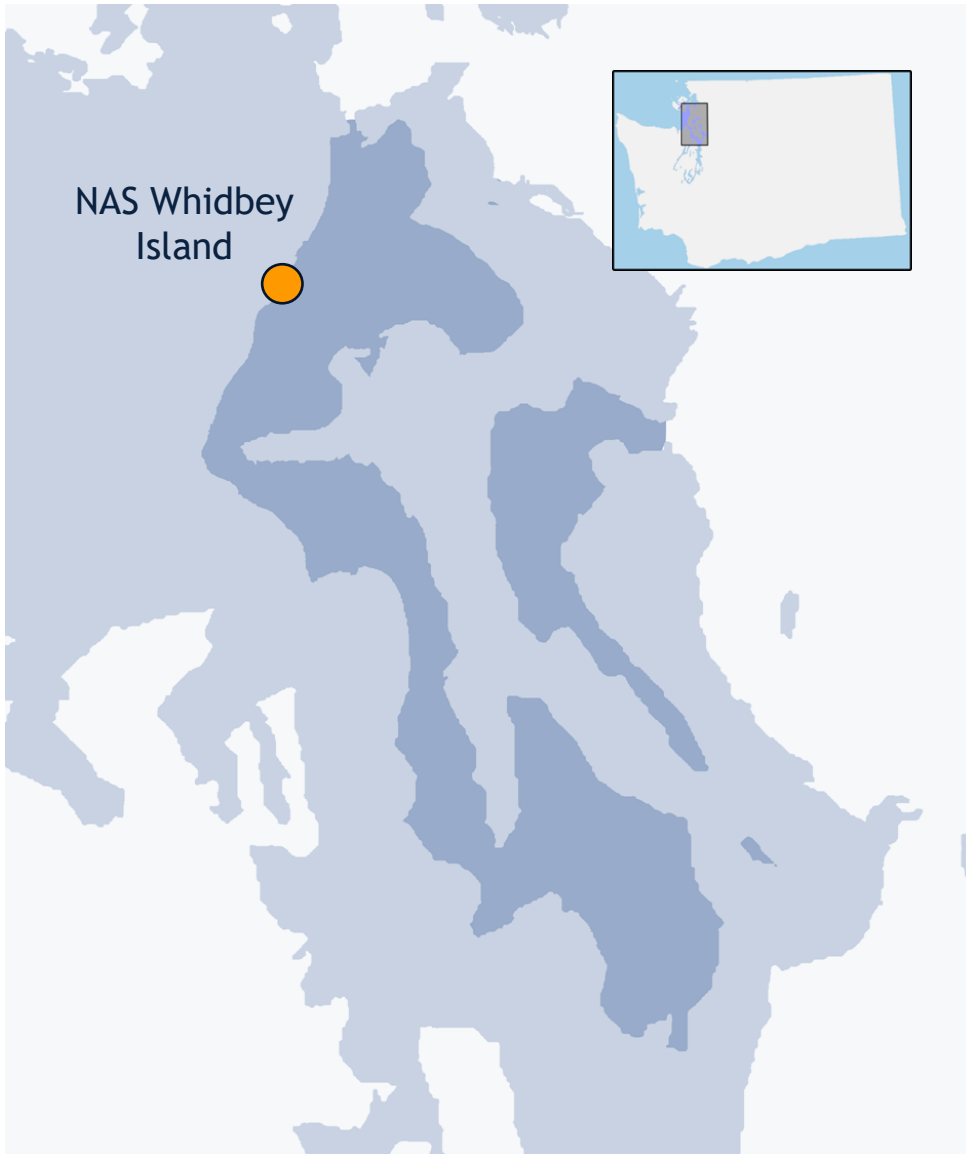
**Economic Development Council  
for Island County**  
PO Box 279  
Coupeville, WA 98239  
[www.iscoedc.com](http://www.iscoedc.com)  
(360) 678-6889

# Table of Content

---

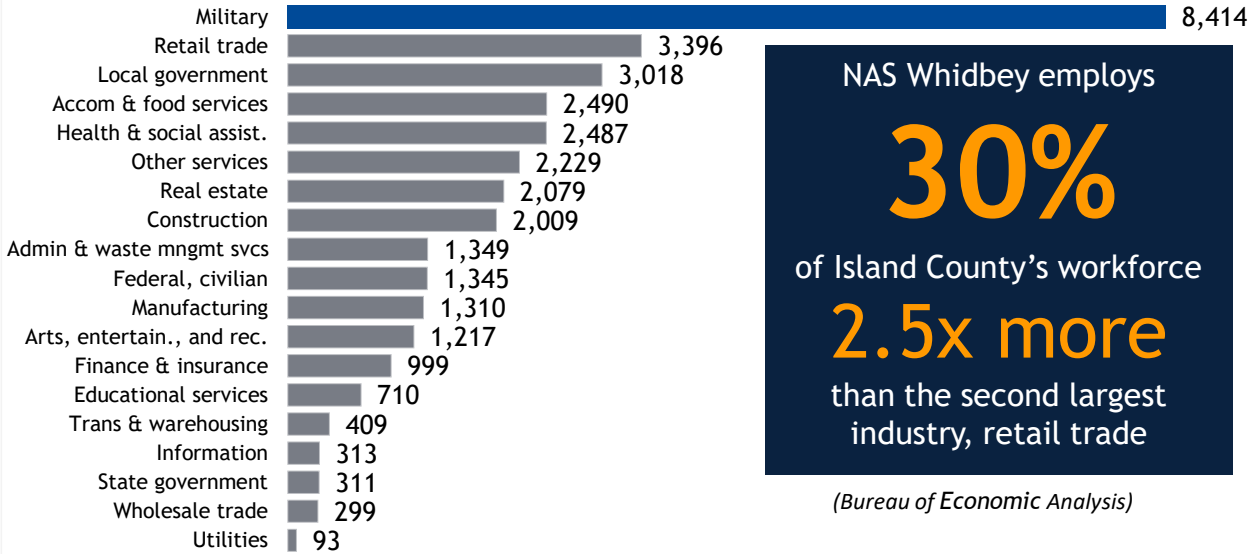
Executive Summary	3
Employment	4
Compensation	4
Local Contracts	5
Commissary	5
Navy Exchange	5
Visitor Spending	6
Transfer Payments	6
Federal Impact Aid	7
Veterans	8
Search and Rescue	9
Conservation	10
Military Pay	11
Military Allowances	13
Bibliography	15
Resources	16

Naval Air Station Whidbey Island (NASWI) is a major contributor to the regional economy of Island County and surrounding counties. NASWI generates economic stimulus in the form of good-paying jobs, demand for housing and consumer products, expenditures for supplies and operational services, and related economic activities that ripple through a wide range of economic sectors.



NASWI and Island County are **critical** to the U.S. National Security Strategy.

## Employment by Industry Island County

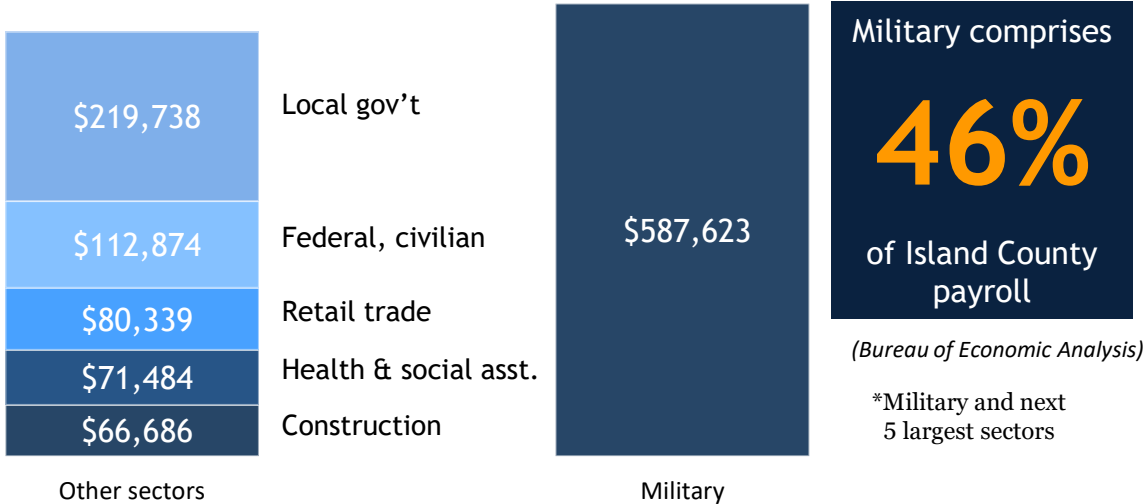


NAS Whidbey employs  
**30%**  
of Island County's workforce  
**2.5x more**  
than the second largest  
industry, retail trade

*(Bureau of Economic Analysis)*

NAS Whidbey remains the county's largest employment sector, at ~8,400 military members.

## Compensation by Industry in thousands\*



Military comprises  
**46%**  
of Island County  
payroll

*(Bureau of Economic Analysis)*

\*Military and next  
5 largest sectors

<p><b>\$701M</b> total NAS compensation 2017</p>	<p><b>\$588M</b> to active military members</p>	<p><b>\$113M</b> to federal civilians</p>
--	---	---

## Disability Contracts

The federal government has created opportunities for the severely disabled by encouraging services contracts targeted to hire those with disabilities. Through these contracts, the American Dream is made possible for a segment of the population where nearly 80% do not have jobs.

Federal contracts require payment of the prevailing wage for the job performed, which means the employees not only receive wages much higher than minimum, they also receive benefits.

**\$1.5M**  
disabled services contract to

**New Leaf**  
local non-profit  
to employ local individuals  
with disabilities for work on  
NAS Whidbey Island  
(FY-17)

The table below summarizes 2017 Island County prime and sub-contractor payments from the Navy for work performed *in Island County*.

## Navy Prime Contracts to Island County Businesses FY-17

(01 Oct 2016 - 30 Sep 2017)

Type of Contract	Total
Construction of new nonresidential structures	\$80,920,000
Maintenance & repair of nonresidential structures	\$16,331,915
<b>Total</b>	<b>\$97,251,915</b>

**\$97M**  
commercial  
contracts

Source: (2018 NASWI EIA)

## Commissary

The Defense Commissary Agency operates grocery stores worldwide and is part of the benefits provided to military members, their dependents, and retirees.

### Fiscal Year 2019

(01 Oct 2018 - 30 Sep 2019)

Full Time Equivalent Employees	54.4
Estimated Payroll	\$810K*

Source: (DECA)

\*Payroll was computed using the GS paygrades at a Step 5 salary/hourly rate and multiplying it by the full-time equivalent factor provided by the Defense Commissary Agency.

## Navy Exchange

The Navy Exchange operates retail stores worldwide and is part of the benefits provided to military members, their dependents, and retirees.

### Fiscal Year 2019

(01 Feb 2019- 31 Jan 2020)

Full Time Equivalent Employees	147
Estimated Payroll	\$5.8M

Source: (NASWI NEX)

**60%**  
civilians

**40%**  
active duty or  
retired dependents

# Visitor Spending and Transfer Payments

**54,192**

visitor days  
to Navy  
Gateway Inn  
& Suites and  
the Navy  
Lodge

**17,172**

visitor days  
to local  
hotels

**\$3.2M**

local  
restaurants

**\$1.6M**

hotels and  
motels

**\$357K**

local retail

**\$5.2M**

Total visitor spending

(2018 NASWI EIA)

## Transfer Payments

Payments to veterans, including military retirees, contributed about \$98 million to Island County's economy in 2018, according to Measuring Communities. The bulk of the payments consisted of pension and disability payments followed by military medical insurance (Tricare) reimbursements to local health care providers, educational benefits, and other miscellaneous payments.

2017

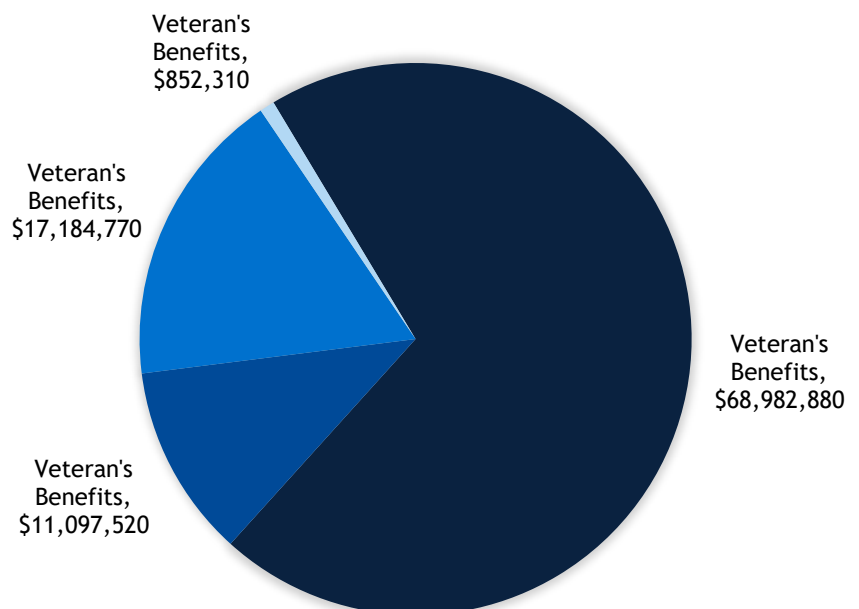
**13,596**

veterans in  
Island County

**\$98M**

total benefits

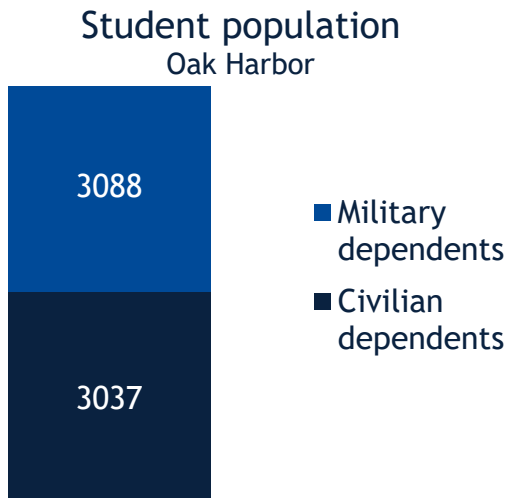
Measuring Communities, 2018



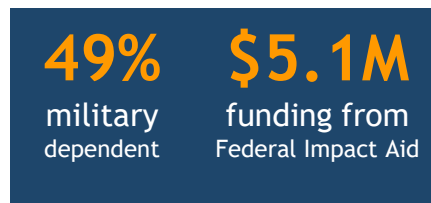
As a result of NAS Whidbey Island, nearly half of the property value in the Oak Harbor school district is federally owned and not taxable. Since school districts rely on local taxes, the Oak Harbor and Coupeville school districts receive financial assistance through the Impact Aid Program. This federally funded program was designed to mitigate the loss of property tax revenue on tax-exempt Federal property and help pay for salaries for teachers and teacher aides; textbooks, computers, and other equipment; after-school programs and remedial tutoring; advanced placement classes; and special enrichment programs.

*Washington State Office of Public Instruction (WA ST OSPI, 2016) and US Department of Education (Spruill, 2017)*

## Oak Harbor School District

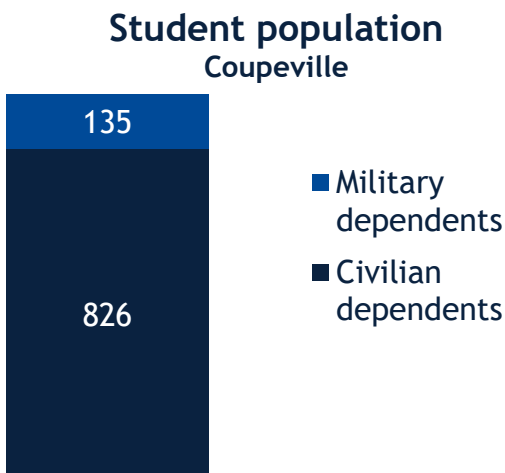


Primary base operations for NAS Whidbey Island lie within Oak Harbor School District's boundaries. Military dependents make up nearly half of the enrolled students.



*Source: Oak Harbor School District*

## Coupeville School District

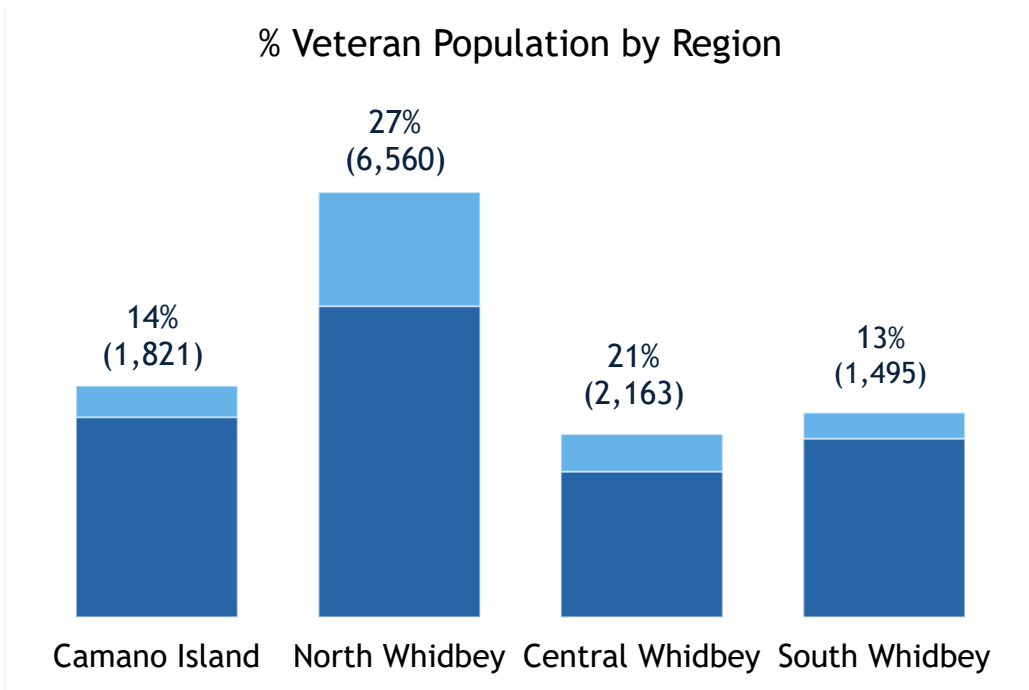


Coupeville is 15 miles south of Naval Air Station Whidbey Island. Besides dependents of military members living in the district, some military dependent students from the Oak Harbor area attend schools in the Coupeville district.

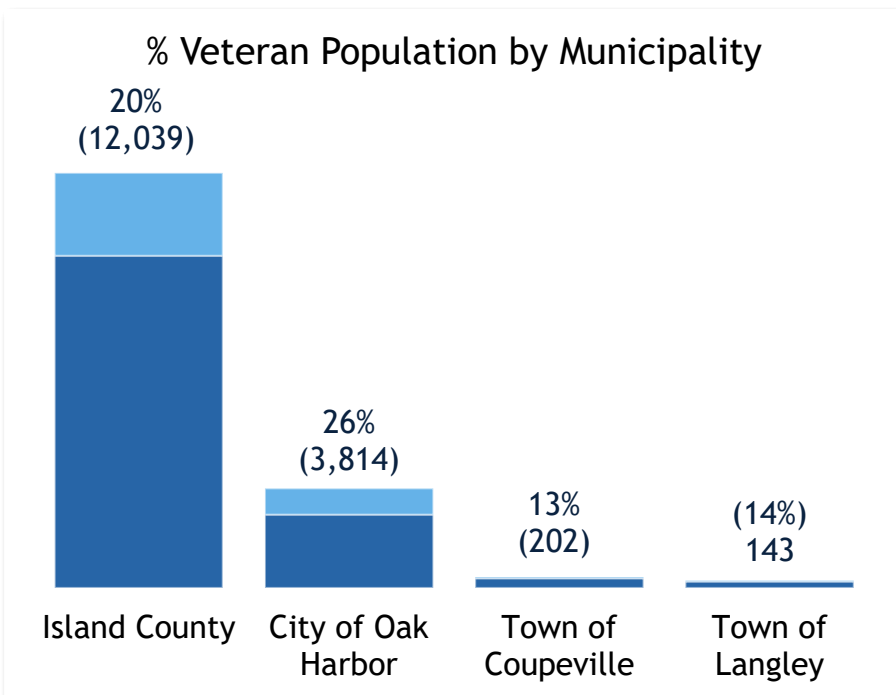


*Source: Coupeville School District*

US Census defines a “civilian veteran” as a person 18 years old or over who has served, but is not now serving, on active duty in the military. People who served in the National Guard or military Reserves are classified as veterans only if they were called or ordered to active duty, not counting the 4-6 months for initial training or yearly summer camps.



U.S. Census Bureau (2013-2017). Sex by Age by Veteran Status for the Civilian Population 18 Years and Over American Community Survey 5-year estimates.



**20%**  
Island County  
Veteran Population

**2.6x**  
national average of  
7.7%

**3.4x**  
national average in  
Oak Harbor



Naval Air Station Whidbey Island's Search and Rescue (SAR) units support northwest Washington with Medical Evacuation and rescue support across a broad range of situations.

**10** rescue aircrewmembers  
**3** SAR medical technicians

SAR and MEDEVAC  
services provided at no  
charge

**Navy aircrew** fly in all  
weather

2018

**77** LIVES delivered to  
higher care

**69** missions

**43** rescues

**17** medevacs

**9** searches

The SAR crew responded to a call concerning a 47-year-old man suffering from severe head injuries on Orcas Island. The crew successfully transported the man from Orcas Island Airport to Harborview Medical Center in Seattle.

*San Juan Journal, Nov. 15, 2019*

A SAR team from NAS Whidbey Island rescued an injured hiker in the Olympic Mountains. The 33-year-old man had fallen down a slope on a trail near Lake Constance. Once on location, the SAR crew was able to locate the injured hiker, despite low cloud coverage, and transport him to Harborview Medical Center in Seattle.

*Whidbey News Times, Sept. 26, 2019*

Rescued a 39-year-old mountain climber near Washington Pass. The climber had suffered a possible pelvis fracture and loss of consciousness after a fall. The SAR crew was able to evacuate the injured climber and transport him to Harborview Medical Center in Seattle.

*KIRO News, Sept. 6, 2019*

## NASWI's Environmental Affairs Department manages:

**55,600+** combined acres in Pacific Northwest

**8,200** acres on Whidbey Island

**47,400** at Naval Weapons Systems Training Facility Boardman, OR

## NASWI Environmental Awards

**2016 & 2017** Navy Community Service and Environmental Stewardship Award

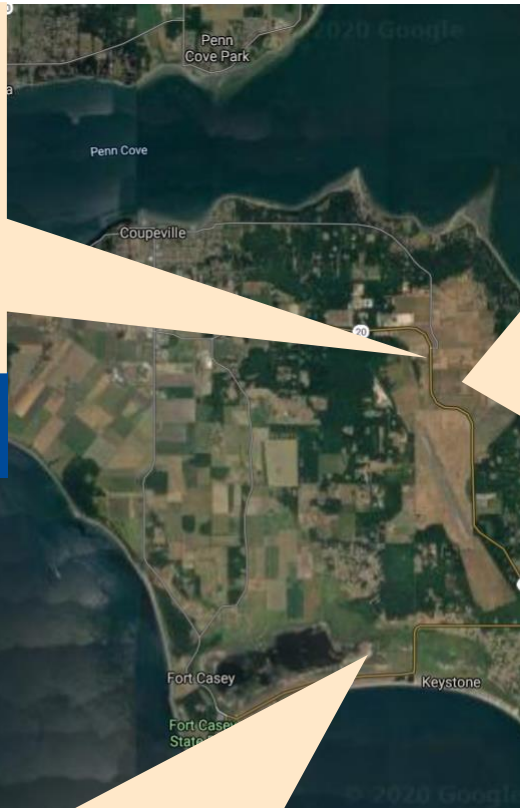
**2016** CNO Environmental Award for Natural Resource Management in Large Installation Category

**2017** SECNAV Environment Award for Cultural Resources Management in Large Installation Category

### Weyerhaeuser Seed Orchard Conservation Easement

Weyerhaeuser Seed Orchard (formerly Longview and Plum Creek Seed Orchards) has been a conifer seed orchard for nearly 30 years, producing superior seed for reforestation.

Navy contributed  
**\$350,000**



### Sierra Pacific Conservation Easement

Two easements protect conifer seed orchard from sub-division and/or development. Made possible by the U.S. Navy and a Farmland Preservation Grant from the Washington Wildlife and Recreation Program in 2011.

**66 acres**  
scenic views & wildlife habitat

Navy contributed  
**\$250,000**

### Crockett Lake East

Part of the Pacific Flyway and identified as an Island County critical habitat area, an Important Bird Area by the Audubon Society, and an International Shorebird Survey site. Made possible in part by the U.S. Navy, along with contributions from the U.S. Fish and Wildlife Service, Whidbey Camano Land Trust, and private land and monetary donations.

**<238 bird species**

documented at Crockett Lake preserve

**149 acres**  
critical habitat area

Navy contributed  
**\$177,000**

There are various types of military pay. Basic pay is received by all and is the main component of an individual's salary. The other pays, often referred to as special and incentive pays, are for specific qualifications or events. For example, there are special pays for aviators and parachutists; special pays are also paid for dangerous or hardship duties. Most allowances are not taxable, which is an additional imbedded benefit of military pay.

The military pay chart is abbreviated and includes only enlisted and officer pay grades to provide representative information, not comprehensive. To see the entire chart visit: <https://www.dfas.mil/>.

## Monthly Pay by Years Enlisted

Pay Grade	<2 years	2 years	3 years	4 years	6 years	8 years	10 years	20 years	30 years
O-10	0.00	0.00	0.00	0.00	0.00	0.00	0.00	16441.80	16441.80
O-9	0.00	0.00	0.00	0.00	0.00	0.00	0.00	15546.00	16441.80
O-8	10999.50	11360.40	11599.50	11666.10	11964.60	12462.90	12579.00	14730.00	15471.30
O-7	9140.10	9564.60	9761.10	9917.40	10200.00	10479.60	10802.70	13319.70	13656.00
O-6	6931.20	7614.60	8114.40	8114.40	8145.30	8494.50	8540.70	10890.90	12270.30
O-5	5778.00	6509.10	6959.40	7044.30	7325.70	7493.70	7863.60	9530.10	9816.60
O-4	4985.40	5770.80	6156.30	6241.80	6599.10	6982.80	7460.40	8324.10	8324.10
O-3	4383.30	4968.60	5362.50	5847.30	6127.80	6435.00	6633.90	7131.30	7131.30
O-2	3787.50	4313.40	4967.70	5135.70	5241.30	5241.30	5241.30	5241.30	5241.30
O-1	3287.10	3421.80	4136.40	4136.40	4136.40	4136.40	4136.40	4136.40	4136.40
E-9	0.00	0.00	0.00	0.00	0.00	0.00	5472.90	6419.40	7706.40
E-8	0.00	0.00	0.00	0.00	0.00	4480.20	4678.20	5540.10	6389.70
E-7	3114.30	3399.00	3529.50	3701.40	3836.10	4067.40	4197.90	4946.40	5597.40
E-6	2693.70	2964.30	3095.10	3222.30	3354.90	3653.10	3769.80	4172.10	4172.10
E-5	2467.50	2634.00	2761.20	2891.40	3094.50	3306.30	3480.90	3501.90	3501.90
E-4	2262.60	2378.40	2507.10	2634.60	2746.50	2746.50	2746.50	2746.50	2746.50
E-3	2042.70	2171.10	2302.80	2302.80	2302.80	2302.80	2302.80	2302.80	2302.80
E-2	1942.50	1942.50	1942.50	1942.50	1942.50	1942.50	1942.50	1942.50	1942.50
E-1 >4 Mon	1733.10	1733.10	1733.10	1733.10	1733.10	1733.10	1733.10	1733.10	1733.10
E-1 <4 Mon	1602.30	0.00	0.00	0.00	0.00	0.00	0.00	0.00	0.00

<https://www.dfas.mil/militarymembers/payentitlements/Pay-Tables.html>

## Sea Pay

Sailors receive sea pay when they are:

- Assigned permanently or temporarily to a ship, ship-based staff, or aviation unit, if the primary mission of the ship is accomplished while underway.
- Assigned permanently or temporarily to a vessel whose primary mission is accomplished in a port that is more than 50 miles away from the home-port.
- Serving as a member of the off-crew as part of a two-crewed submarine.

### Monthly Sea Pay by Years Enlisted

Pay Grade	<2 yrs	2 yrs	3 yrs	4 yrs	6 yrs	8 yrs	10 yrs	20 yrs	30 yrs
<b>O-6</b>	100	100	100	394	400	400	419	463	506
<b>O-5</b>	100	100	100	394	394	394	394	431	456
<b>O-4</b>	100	100	100	325	331	350	356	388	394
<b>O-3</b>	100	100	100	263	281	325	331	356	394
<b>O-2</b>	100	100	100	263	281	325	331	356	394
<b>O-1</b>	100	100	100	263	281	325	331	356	394
<b>E-9</b>	135	135	160	381	400	438	438	688	700
<b>E-8</b>	135	135	160	381	400	438	438	688	700
<b>E-7</b>	135	135	160	381	400	438	438	688	700
<b>E-6</b>	135	135	160	350	375	394	406	638	656
<b>E-5</b>	70	80	160	350	375	394	406	638	638
<b>E-4</b>	70	80	160	350	363	363	363	488	488
<b>E-3</b>	50	60	100	125	125	125	125	125	125
<b>E-2</b>	50	60	75	94	94	94	94	94	94
<b>E-1 &gt;4 mo</b>	50	50	50	63	63	63	63	63	63
<b>E-1 &lt;4 mo</b>	135	135	160	381	400	438	438	688	700

<https://militarybenefits.info/career-sea-pay/>

Allowances are the second most important element of military pay. Allowances allow for specific needs, such as food or housing, when not provided by the government. For example, housing for all military members and their families. Those who *do* live in government housing do not receive full housing allowances. Those who *do not* live in government housing receive allowances to assist them. Most allowances are not taxable, which is an additional imbedded benefit of military pay.

Most common  
**Basic Allowances**

**BAS**      **BAH**  
subistence      housing

Most force members receive both and, in many cases, these allowances comprise a significant portion of the total pay.

## Basic Allowance for Housing (BAH)

WA312-Whidbey Island					
Pay Grade	Officer		Pay Grade	Enlisted	
	With Dependents	Without Dependents		With Dependents	Without Dependents
O-01E	\$1,962	\$1,473	E-1	\$1,365	\$1,173
O-02E	\$2,106	\$1,593	E-2	\$1,365	\$1,173
O-03E	\$2,232	\$1,824	E-3	\$1,365	\$1,173
O-01	\$1,467	\$1,314	E-4	\$1,365	\$1,173
O-02	\$1,824	\$1,455	E-5	\$1,413	\$1,260
O-03	\$2,124	\$1,677	E-6	\$1,827	\$1,371
O-04	\$2,364	\$1,941	E-7	\$1,935	\$1,452
O-05	\$2,532	\$2,007	E-8	\$2,055	\$1,542
O-06	\$2,553	\$2,115	E-9	\$2,193	\$1,644
O-07	\$2,577	\$2,154			

Source: Military benefits, 2020

Based on geographic duty location, pay grade, and dependency status, BAH provides service members housing compensation in civilian housing markets when government quarters are not provided or available. **BAH** is paid monthly.

## Basic Allowance for Subsistence (BAS)

BAS continues the military tradition of providing room and board (or rations) as part of a service member's pay. BAS offsets the monthly cost of a service member's meals but is not intended to cover the costs of meals for family members.

Average monthly BAS	
Officers	Enlisted
<b>\$256.68</b>	<b>\$372.71</b>

[www.dfas.mil](http://www.dfas.mil)

## Family Subsistence Supplemental Allowance (FSSA)

FSSA Increases household income to **130%** Federal poverty line, up to **\$1,100/month**

The FSSA is a monthly entitlement program that increases the BAS of a service member to remove the member's household from eligibility under the United States Department of Agriculture Food Stamp Program.

## 2020 Navy Clothing Replacement Allowance

After three years of service, enlisted military members receive the standard rate each year on the anniversary of their enlistment, which provides for continued replacement and maintenance of unique military items that would normally require replacement.

Type	Male	Female
Basic	\$356.40	\$352.80
Standard	\$511.20	\$504.00
Special	\$655.20	\$658.80

## 2016 Family Separation Allowance (FSA)

**FSA**  
**\$250** per month  
**\$8.33** per day (pro-rated)

When a service member's dependents cannot live with them at or near their permanent duty station, whether inside or outside the United States, they may be entitled to FSA. FSA provides compensation for added expenses incurred because of an enforced family separation.

- Census Bureau, U.S. (2019, 11 06). *Table B21001 - Veterans Status*. Retrieved 11 06, 2019, from American Community Survey:  
<https://censusreporter.org/data/table/?table=B21001>
- Department of Commerce, U. S. (2018, 11 05). *CAINC6N Compensation of Employees by NAICS Industry*. Retrieved 01 14, 2020, from Bureau of Economic Analysis:  
<http://www.bea.gov/>
- Department of Defense. (2019, 12 30). *2020 Military Active & Reserve Component Pay Tables*. Retrieved 01 14, 2020, from Defense Finance and Accounting Service:  
<https://www.dfas.mil/militarymembers/payentitlements/Pay-Tables.html>
- Department of Defense. (2020, 01 22). *Regular Military Compensation (RMC) Calculator*. Retrieved from Military Compensation:  
<http://militarypay.defense.gov/Calculators/RMC-Calculator/>
- Department of Education, U.S. (2008, 08 27). *About Impact Aid*. Retrieved 08 19, 2013, from Office of Elementary and Secondary Education:  
<http://www2.ed.gov/about/offices/list/oese/impactaid/whatisia.html>
- KIRO7 News (2019, 09 10). "Injured, unconscious hiker rescued in Cascade Mountains."  
<https://www.kiro7.com/news/local/injured-unconscious-hiker-rescued-in-cascade-mountains/984836885/>
- Military Benefits. *2020 Career Sea Pay (CSP)*. Retrieved from  
<https://militarybenefits.info/career-sea-pay/>
- Naval Air Station Whidbey Island. (2007, 06 27). *Environmental Affairs Department*. Retrieved 08 19, 2013, from Naval Air Station Whidbey Island:  
<http://eadnaswi.ahf.nmci.navy.mil/>
- Naval Air Station Whidbey Island (2019, 09 09). *NAS Whidbey SAR Rescues Injured Climber in Cascade Mountains Friday* [Press Release].
- Naval Air Station Whidbey Island (2019, 09 23). *NAS Whidbey SAR Rescues Hiker In Olympic Mountains Saturday Evening* [Press Release].
- Naval Air Station Whidbey Island (2019, 11 07). *NAS Whidbey SAR Conducts MEDEVAC From Orcas Island* [Press Release].
- Office of Superintendent of Public Instruction, Washington State. (2016, 07 17). *Washington State Report Card*. Retrieved 09 17, 2013, from Office of Superintendent of Public Instruction: <http://reportcard.ospi.k12.wa.us/>
- San Juan Journal (2019, 11 15). "NAS Whidbey SAR Conducts medevac From Orcas."  
<https://www.sanjuanjournal.com/news/nas-whidbey-sar-conducts-medevac-from-orcas/>
- Office of Superintendent of Public Instruction, Washington State. (2016, 07 17). *Washington State Report Card*. Retrieved 09 17, 2013, from Office of Superintendent of Public Instruction: <http://reportcard.ospi.k12.wa.us/>

- San Juan Journal (2019, 11 15). "NAS Whidbey SAR Conducts medevac From Orcas." <https://www.sanjuanjournal.com/news/nas-whidbey-sar-conducts-medevac-from-orcas/>
- Spruill, K. (2017, 02 07). Statistics on Impact Aid for School. *WA State Vouchers*. Washington, DC, US: US Dept of Education.
- Washington State Department of Commerce. Washington's Key Sectors. Retrieved 12 06, 2019, from <http://choosewashingtonstate.com/why-washington/our-key-sectors/military-defense/>
- Whidbey Camano Land Trust. (2013, 08 16). *Projects*. Retrieved 08 16, 2013, from Whidbey Camano Land Trust: <http://www.wclt.org/>
- Whidbey News Times (2019, 09 26). "NAS Whidbey SAR rescues hiker in Olympic Mountains." <https://www.whidbeynewstimes.com/news/nas-whidbey-sar-rescues-hiker-in-olympic-mountains/>



[info@edcislandcounty.org](mailto:info@edcislandcounty.org)  
[www.iscoedc.com](http://www.iscoedc.com)  
(360) 678-6889

The Economic Development Council for Island County (EDC) is an independent nonprofit that works to create a thriving economic environment where business can grow and create jobs while preserving our unique quality of life.

- Providing one-on-one business advising, connecting owners to state and local resources, nurturing startup entrepreneurs, and sharing economic data and information.
- Giving members a voice in the economic development of their community.
- We are the County's designated partner with the WA State Department of Commerce and a channel for information and assistance between the State, County, and businesses.

Join us! By becoming a member or sponsor of the EDC you can help support economic vitality in Island County.