

Business Perspective

June 2019

Chamber celebrates completion of three-year building renovation



Chamber Board members, Past Chairs and staff celebrated a ribbon cutting to mark completion of renovations at the Chamber Foundation Building in Corporate Woods.

Last month, a large crowd of business representatives attended an open house to celebrate the completion of a multi-year building renovation project and to see the changes to the Chamber Foundation Building that opened in 2000.

Dozens of organizations and individuals contributed to the Business Forward

Building Campaign beginning in 2016 to enhance the building. To see a list of contributors, see page 4.

The meeting rooms and the beautiful new Sunderland Foundation Terrace are available to members and the community for meetings and events. For more information, call (913) 491-3600.



Our Mission:

To enhance the business environment and quality of life in our community.



Chamber Calendar

Leads Groups meetings

Chamber Leads Groups meet 11:30 a.m.-12:30 p.m. the 1st and 3rd Thursdays; 11:30 a.m.-12:30 p.m. the 2nd and 4th Mondays; and 8:00-9:00 a.m. the 2nd and 4th Tuesdays.

Wednesday Wake-up

Wednesday, June 12, 2019 - 8:00-9:00 a.m.
Equity Bank, 4551 West 107th Street, Suite 210
Free and open to Chamber members only

Public Policy & Advocacy Committee

Discussing the 2019 Kansas Legislative Voting Record
Friday, June 14, 2019 - 12:00-1:30 p.m.
Overland Park Chamber, 9001 West 110th Street
\$15 per person for members only; lunch included.

Leadership Overland Park Graduation

Join us for a luncheon to recognize our 2019 class and hear from keynote speaker Deb Miller.

Event Sponsor: Emporia State University Kansas City

Friday, June 21, 2019 - 11:30 a.m.-1:30 p.m.
Sheraton Overland Park, 6100 College Boulevard
Per person: \$35 for members; \$45 for non-members;
Table of 10: \$385 for members; \$495 for non-members

Young Professionals Learning@Lunch

Program on elevating networking/relationship skills

Tuesday, June 25, 2019 - 12:00-1:30 p.m.
Kansas State University Olathe,
22201 West Innovation Drive
\$20 for members; \$27 for non-members, lunch included

To make reservations, [click here](#) or call (913) 491-3600.

Ribbon cuttings & groundbreakings

Thursday, June 6 - 11:00 a.m.
Beauty Brands, 7501 West 119th Street

Thursday, June 6 - 4:00 p.m.
Veracity Consulting, 8100 Newton Street, #210

Wednesday, June 12 - 4:00 p.m.
Mercer Zimmerman, 8981 Bond Street

Chamber Board and Staff

BOARD OFFICERS:

Mike Hess, *Chairman*
HNTB Corporation
Bobby Olm-Shipman, *Chair-Elect*
Saint Luke's South Hospital
Bill Ferguson, *1st Vice Chairman*
Central Bank of the Midwest
Steve Troester, *2nd Vice Chairman*
PGAV Architects, Inc.
Doug Lynn, *Secretary*
Sprint
Chris Wally, *Treasurer*
Wally & Co.
Brett Bogan, *Past Chairman*
Spencer Fane LLP

BOARD MEMBERS:

Faruk Capan, **Intouch Group**
Greg Crowley, **Crowley Furniture**
Tim Danker, **SelectQuote**
Jim Edwards, **Nothing Bundt Cakes**
John Fuller, **DLR Group**
Dr. Michael Fulton, **Shawnee Mission School District**
Jim Hemenway, **Chicago Title**
Tom Herzog, **Netsmart Technologies**
Brenner Holland, **Hunt Midwest**
Craig Jeffries, **Empower Retirement**
Jodde Lanning, **Payne & Jones, Chartered**
Karsten Randolph, **AdventHealth Shawnee Mission**
Cindy Rock, **DexYP**
Stacy Rose, **AdamsGabbert**
Tony Rupp, **Foulston Siefkin LLP**
Matt Sheets, **First National Bank**
Joan Wells, **Wellington**
Mark Williams, **Garver**

EX-OFFICIO BOARD MEMBERS:

Dr. David Cook, **The University of Kansas Edwards Campus**
Bill Ebel, **City of Overland Park**
Mayor Carl Gerlach, **City of Overland Park**
Dana Markel, **Visit Overland Park**
Tracey Osborne Oltjen, CCE, Overland Park Chamber
Greg Wolf, **Dentons**
Brett Bogan, **Spencer Fane LLP**
[2019 Chairman of Overland Park Chamber Economic Development Council]

CHAMBER STAFF:

Tracey Osborne Oltjen, CCE, *President & CEO*
Stacey Cowan, *Membership Director*
Andie Drummond, *Member Services Coordinator*
Frank Ebling, *CFO*
Celia Fritz-Watson, IOM, *Director of Events & Member Services*
Tim Holverson, IOM, *Recruitment & Retention Director, Economic Development*
Chris Jackson, *EDC Policy & Communications Coordinator*
Beth Johnson, CECD, *Senior Vice President of Economic Development*
Stan Lawson, *Communications Director*
Erin Murray, *Assistant to the President*
Amanda Schumacher, *Special Projects*
Kevin Walker, IOM, *Vice President of Public Policy & Advocacy*

And they're graduated...

It's June and we've recovered from the flurry of graduations and celebrations of educational milestones of friends and loved ones. This year I survived a marathon of St. Louis to Des Moines, back to Overland Park, and to St. Louis again for graduations of three beloved nieces. I wondered as I put myself momentarily in their shoes whether they'll remember anything about what is said on these occasions. Will there be a nugget from the commencement address, the valedictorian's speech, the advice from a grandparent, or even something from their cool Auntie?

Doubtful. My memories of my college graduation are nil on the speakers, but sweet about that final walk with my class around the quad in cap and gown, and the moment I saw that my grandfather had driven all the way to Kansas City to see me graduate when I hadn't expected him to be there.

Certainly I received lots of advice from friends and family, mostly of the same variety I was raised on. Things like working hard regardless of how much you're paid, that your word is your bond and to never stop learning.

I Googled a little about the advice today's graduates receive. There's more emphasis about choosing work that makes you happy and that makes a difference. There's an importance placed on building healthy lifestyles, including mental wellness. The advice to be a lifelong learner is as critical as it ever was.

A Bureau of Labor Statistics study indicates that on average, baby boomers held 11.7 jobs between the ages of 18 and 48, while 27 percent of them held 15 or more. There is a perception about younger generations job-hopping more frequently than their predecessors, though for millennials that's more typical of their stage of life than anything.

Regardless of which generation you belong to, whether you stay at the same company for several decades, or change jobs and/or careers a number of times, the reality is that your skills will need to adapt with changes in the marketplace and technology. I've stayed in the same profession my entire career, serving five different organizations. The trajectory of change has been profound since my arrival at my first chamber whose membership records resided on notecards in a recipe box dating back to the 1950's.

It wasn't exactly pioneer times, but it wasn't that long ago. We've rapidly progressed to both a dependence upon and love for the advantages of technology. Looking back on all that's transpired in the past few decades, it's clear that proficiency with technology, combined with the ability to truly connect with others on a personal level will give our new graduates the ability to succeed wherever their careers lead.

Who knows what changes my nieces will see in their lifetimes. I'm certain they won't remember the words I say to them at their graduations. What I hope is they've learned from me the spirit to keep learning...and loving that opportunity.



Tracey Osborne Oltjen, CCE, IOM
President & CEO
[@traceylosborne](https://twitter.com/traceylosborne)

Business Perspective is published monthly by the Overland Park Chamber of Commerce.

9001 West 110th Street, Suite 150, Overland Park, KS 66210

Phone: (913) 491-3600 • Fax: (913) 491-0393 • opcc@opchamber.org • www.opchamber.org

Build your business network!

Wednesday Wake-up

A Business Before Hours

Wednesday, June 12

8:00-9:00 a.m.

Equity Bank is a full-service community bank with locations throughout the Midwest including two in Overland Park. Equity Bank offers a full range of financial solutions including

commercial loans, business banking, and treasury management services. Whether you're launching a startup or expanding operations, its commercial lenders are here to help you succeed. Hear from entrepreneurs across the Midwest by listening to Equity Bank's podcast series.

Free and open to Chamber members only.

To register, [click here](#)
or call (913) 491-3600

Hosted by



4551 West 107th Street, Suite 210

2019 Series Sponsor:



LEADERSHIP OVERLAND PARK

General Membership Luncheon Leadership Overland Park Graduation

Friday, June 21

11:30 a.m.-1:30 p.m. (check-in begins at 11:30 a.m.)

Sheraton Overland Park Hotel, 6100 College Boulevard

**Join us as we celebrate the graduation of our
2019 Leadership Overland Park Class!**

Featured Speaker: Deb Miller

Director of KU Public Management Center

Deb Miller was Kansas' first female and longest-serving Secretary of Transportation, serving under three successive governors, 2003-2011. Most recently, she served in Washington, D.C., as Vice Chair of the Surface Transportation Board.



Register by June 14 - [click here](#) -
or call (913) 491-3600

Presenting Sponsor:

Graduating Gifts Sponsor:

**EMPORIA STATE
UNIVERSITY**
■ KANSAS CITY



Click below for event details.

YOUNG PROFESSIONALS AT K-STATE OLATHE

THE SELF-AWARE SOCIALITE

The Overland Park Chamber of Commerce and K-State are partnering to help elevate your networking and relationship skills and ensure your career success. Join us and learn more about:

- How to understand a table-setting like a pro
- Navigating social relationships and requests
- Tips and Tricks of business relationships
- Hosting people well

Tuesday, June 25 | 12-1:30 p.m.

22201 West Innovation Drive
Olathe, KS 66061

To register, [click here.](#)



**Overland Park
YOUNG PROFESSIONALS**

**KANSAS STATE
UNIVERSITY** | Olathe

JOIN US AT

Stems

2019
**A GARDEN
SOIRÉE**

**JUNE 22, 2019
7-11 P.M.**

At the beautiful Overland Park
Arboretum &
Botanical Gardens

Visit stemssoiree.org
or call **913.322.6467**
for all ticket and
event information.

Purchase your tickets or sponsorship package today.

PRESENTING SPONSOR:

LMC TRUCK
PARTS & ACCESSORIES

LEGACY SPONSORS:

Bank of Blue Valley
in partnership with the
Regnier Family Foundations

**THE frank
AGENCY**

**FOUNDATION
OF OVERLAND PARK**

CHAMBER EVENTS & ANNOUNCEMENTS

Our Thanks to These Contributors to the Business Forward Building Campaign:

Benefactors

Sunderland Foundation Sprint
Central Bank of the Midwest Kansas City Power & Light

Conference Room Sponsors

Rau Construction Co. Black & Veatch Affinis Corp

Leader Gifts

Bank of Blue Valley Lathrop Gage LLP
Children's Mercy Hospital Oak Park Mall
Commerce Bank PNC Bank, NA
First National Bank Varnum/Armstrong/Deeter
JE Dunn Construction Wallace Saunders
Company

Friends of the Foundation

DLR Group OMNI Human Resource
Firebaugh Family Charitable Management
Fund Tracey L. Osborne Oltjen
HNTB Corporation PC Partners, Inc.
O'Donnell & Sons Overland Park Wealth
Construction Management

Supporters

Fisher Phillips LLP Clarence & Carmen Roeder
Mike & Kathleen Hess Shaner Appraisals, Inc.
Bruce Robb Charitable Fund
Bill Roche Sen. John Vratil

In-Kind Contributors

MOMENTA Olsson Parker Communications

Special thanks to . . .

Mary Birch Scott Rice Office Works
Central Bank of the Midwest Summit Lawn & Landscape, Inc.
Harmon Construction, Inc. U.S. Engineering Company



Marshaun Butler, **Children's Mercy Hospital Kansas**, was the featured speaker at our most recent program of the Executive Leadership Series that is sponsored by **First National Bank**.



Receiving new member plaques last month from Chamber Membership Director Stacey Cowan (far left) and EDC Vice President Beth Johnson (far right) were Drs. John Schmidt and Howard Hull, **Active Chiropractic**; Lindsey Weathers, **Elite Physicals**; Taylor Jones, **Zarda Bar-B-Q & Catering**; Christian Huffman, **Sky Real Estate LLC-Metcalf Crossing**; Richard Herring, **Sears Home & Life**; and Jamie McConnell, **State Farm Insurance-Steve Fisher**.

Wednesday Wake-up

A Business Before Hours

hosted on May 8 by



Upper right: Edson and Leonice Ludwig, **Porto Do Sul Brazilian Steakhouse**; tell guests about their restaurant.



Bailey Bradley & Johnna Wesley, **Bury the Hatchet**; Jim Hatch, **Total Nurses Network**; Patrick Wertzberger, **Farmers Insurance**.

Abigail Richards, **Marriott Kansas City Overland Park**; Melinda Jurczak, **MTI Events**; Preston Welborn, **Sheraton Overland Park Hotel**.





City Council President Terry Happer Scheier, Chamber Vice President of Public Policy & Advocacy Kevin Walker and other business representatives helped Tracy Kunkel, **Edward Jones-Financial Advisor**, celebrate her new office at 7011 West 121st Street, Suite 102. For more information: (913) 766-8709 or www.edwardjones.com/tracy-kunkel.

Member Renewals

We thank these companies for reinvesting in the Overland Park Chamber in April 2019:

40-49 Years

Better Homes and Gardens Real Estate Kansas City Homes
Spectrum Business

20-39 Years

API Broadcast Advertising
Fingerprint Marketing & Advertising
Homewood Suites
Jalapenos Mexican Restaurant
Marge Roche and Associates
Morgan Hunter
Shawnee Mission School District
TranSystems

10-19 Years

A.L. Huber General Contractor
Casa de Fuentes
Conference Technologies, Inc.
Enterprise Center of Johnson Co.
Holiday Inn Hotel & Suites Overland Park-West
MD Management
Nicklaus Golf Club at LionsGate
Object Technology Solutions Inc.
Park Meadows Senior Living
Searles Valley Minerals
Show-Me Presentation Resources
Staples, Inc.
TownePlace Suites by Marriott
Turner Construction

5-9 Years

Capstone Insurance Agency
DexYP
Enterprise Bank & Trust
First Student
Hawthorne Plaza, LLC

Hinkle Law Firm LLC
K2 Landscapes
Lifted Logic
McCarthy Building Companies, Inc.
MetroMedia, Inc.
Overland Park Wealth Management
Retail Success
The Tasteful Olive Oil and Vinegar Shop

I-4 Years

ACA Business Club
Accreditation Council for Business Schools and Programs
Advice & Aid Pregnancy Centers
Avenue 80
CREATIVEfn
FedEx Office Print and Ship Center-College & Metcalf
FedEx Office Print and Ship Center-8829 Metcalf Avenue
FedEx Office Print and Ship Center-135th Street
Firestone Complete Auto Care-135th Street
First Federal Bank of Kansas City
Fry's Car Care
Fry's Tire & Service
Kansas City Eye Clinic
Maciel Wealth Management
Oliver Insurance Agency Inc.
Price Brothers
Saint Luke's Community Hospital-North Overland Park
Scheels
Seeds of Hope, Inc.
True Peace Financial Solutions, LLC
Tutera Senior Living & Healthcare
WCA



City Council President Terry Happer Scheier and Chamber President & CEO Tracey Osborne Oltjen helped Ryan Rivett, President/CEO; break ground for the state's first **My Place Hotel**, 8983 West 135th Street. Also participating were the owners of Overland Park Holdings, LLC; and the CEO of Eller Enterprises, Inc. Ideal for both short-term and long-term travelers, My Place Hotels offer convenience, comfort and value. For more information: (855) 200-5685 or www.myplacehotels.com.



City Councilmember Faris Farassati and Chamber President & CEO Tracey Osborne Oltjen helped Kelly Steckelberg, CFO; Lukas Haselwood, Senior Technical Support Manager; and their team celebrate a ribbon cutting for **Zoom Video Communications, Inc.**'s, new offices at 6601 College Boulevard. Zoom helps businesses and organizations bring their teams together in a frictionless environment to get more done. For more information: (888) 799-9666 or www.zoom.us.

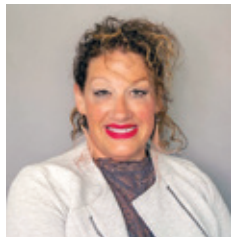


City Council President Terry Happer Scheier, City Councilmember Paul Lyons, Chamber Membership Director Stacey Cowan and Chamber Diplomats helped Tina and Wayne Yake celebrate the opening of their second **The Wooden Spoon** at 4671 Indian Creek Parkway. Since The Wooden Spoon's inception, Tina and Wayne have been catering to businesses in the area for their breakfast and lunch needs. While their specialty is American cuisine, their shop features high-grade deli meats. For more information: (913) 544-1125 or www.woodenspoonkc.com.

Diplomat Q&A

Lindsey Weathers, Elite Physicals

I am a co-founder and Managing Partner of [Elite Physicals](#). We offer executive physicals with year-round physician concierge service to all. Currently I focus on brand awareness and operations.



Q: Who do you find is a best connection / partner for you in business?

A: Decision-makers within their chosen organization who want to offer their key

employees the opportunity for optimal health, thereby creating better employee morale, retention, and productivity.

Q: Why are you a Chamber Diplomat?

A: I love the focus of engagement for the members. The Chamber is what you make of it, as we have all heard time and again. Yet going to events and intelligently engaging in this community can easily become somewhat daunting. Having a Diplomat there to learn your business, your needs, and to help offer solutions quickly compounds results for all. Plus, working alongside Stacey Cowan is a little fun.

Q: What has been your favorite benefit or moment as a member of the Overland Park Chamber?

A: Okay, warning: Cheesy answer in 5...4...3... There is a true and constant theme of selflessness and servitude that keeps displaying itself. It's walking into an event by yourself, not knowing anyone there, and then being immediately approached by another member who wants to learn about you. It's just cool. We are all here with the same intent: To learn from each other, to lift each other up, and to give to the community.

Q: What is the best advice you've received?

A: "Just because you can put it on, doesn't mean it fits."

Q: What is your greatest achievement, so far?

A: My longstanding friendships and that my kids like me but are still scared of me.

To find out about becoming a Chamber Diplomat, contact Stacey Cowan at (913) 766-7604 or scowan@opchamber.org.

Welcome new members!

We are pleased to introduce these new Chamber members:

Advantage Capital

Preston Carter, Vice President of Business Development
5500 West 137th Street, #104
Overland Park, KS 66223
(425) 652-2739
pcarter@advantagecap.com
www.advantagecap.com
Financial Services, Loans

Berkshire Hathaway HomeServices Kansas City Realty

Jim Raines, President
8001 Metcalf Avenue
Overland Park, KS 66204
(913) 945-3779
laurel@reecenichols.com
www.bhhskcreealty.com
Real Estate - Residential

H&H Roofing and Restoration, LLC

Mark Winters, Vice President of Operations
5330 College Boulevard, Suite 100
Leawood, KS 66211
(816) 813-0499
winters@hhroofing.com
www.hhroofing.com
Roofing, Contractors - General

Hadel Financial

Andrew Hadel, CFP®, Investment Advisor
11900 College Boulevard, Suite 320
Overland Park, KS 66210
(913) 262-2020
andrew@hadelfinancialsolutions.com
www.hadelfinancial.com
Financial Planning Consultants & Services, Estate Planning

Jackson Lewis P.C.

Kyle Russell, Office Managing Principal
7101 College Boulevard, Suite 1200
Overland Park, KS 66210
(913) 981-1018
www.jacksonlewis.com
Attorneys

Mantis Pest Solutions

Richard Blackham, Owner
7300 West 110th Street, #768
Overland Park, KS 66210
(913) 225-7060
info@mantispestsolutions.com
www.mantispestsolutions.com

Pest Control Services, Home Care Services

Mission Farms West Development, LLC

Connie Campfield
4000 Main Street
Kansas City, MO 64111
(816) 360-3413
ccampfield@cimlbr.com
www.mission-farms.com
Real Estate - Developers

O'Halloran & Associates American Family Insurance

Eric James, Sales Specialist
12740 South Pflumm Road
Olathe, KS 66062
(913) 782-3035
ejames@amfam.com
www.amfam.com
Insurance

PT Solutions Physical Therapy

Mary Alani, Physician Liaison
9870A West 87th Street
Overland Park, KS 66212
(913) 632-4760
mary.alani@ptsolutions.com
www.ptsolutions.com
Physical Therapists, Health Care

We Get Leads, LLC

Dalton Toelkes, Owner/CEO
11980 Long Street #2618
Overland Park, KS 66213
(785) 224-4622
dalton@wegetleadsllc.com
Internet Marketing & Advertising

The Wooden Spoon

Tina Yake, Owner
4671 Indian Creek Parkway
Overland Park, KS 66207
(913) 544-1125
thewoodenspoon2011@att.net
www.woodenspoonkc.com
Restaurants, Caterers

The Wooden Spoon

11823 College Boulevard
Overland Park, KS 66210
(913) 345-9849
thewoodenspoon2011@att.net
www.woodenspoonkc.com
Restaurants, Caterers

Please support fellow Chamber members who have made investments to enhance the prosperity of our community!



City Councilmember John Thompson and Chamber Vice President of Public Policy & Advocacy Kevin Walker helped Peter Boutros, Chief Brand Officer; and Richard Herring, General Manager; celebrate a ribbon cutting for the new **Sears Home & Life**, 6237 West 119th Street. It is one of the first three smaller Sears store concepts opening in the country carrying all the appliances, tools and mattresses you need. For more information: (913) 274-8014 or www.sears.com.



City Councilmember Fred Spears and Chamber EDC Director of Recruitment & Retention Tim Holverson helped Nika Marnell and Jason Buck celebrate a ribbon cutting for **Komotodo Sushi Burrito**, 13713 Metcalf Avenue. Komotodo serves sushi burritos, poke bowls, and salads with exquisite flavors that will blow away your taste buds. For more information: (913) 961-8699 or www.komotodo.com.



City Councilmember John Thompson, Chamber EDC Vice President Beth Johnson and Chamber Diplomats helped Danny La Gore, General Manager, his team, and **True North Hotel Group** representatives celebrate a ribbon cutting to mark completion of a total renovation of the **Fairfield Inn & Suites by Marriott Kansas City Overland Park**, 12440 Blue Valley Parkway. For more information: (913) 338-3600 or www.marriott.com/mcifo.

Partner Spotlight:



AdventHealth South Overland Park brings the same high-quality, convenient health care AdventHealth is known for to southeastern Johnson County.

In addition to the emergency department, laboratory and imaging center on campus, the medical office building features AdventHealth Medical Group Internal Medicine & Pediatrics, PT Solutions physical therapy, a service of AdventHealth Shawnee Mission; dermatology, cardiology, endocrinology, neurosurgery and gastroenterology services, as well as a dedicated Women's Imaging Center.

This fall, AdventHealth South Overland Park will break ground on a hospital, opening in 2021. The expansion will include a new birth center, surgical services, intensive care unit, heart care and more.

AdventHealth is also extending its commitment to the health and well-being of the community for southeastern Johnson County residents through a variety of partnerships including Deanna Rose Farmstead, Blue Valley Educational Foundation, The Arboretum and Consentino's Market in Bluhawk, along with several others.

In addition to the South Overland Park campus, the AdventHealth network includes the AdventHealth Shawnee Mission campus in Shawnee Mission, AdventHealth Lenexa campus in west Lenexa, three AdventHealth Centra Care locations, along with physician practices located throughout Johnson and Leavenworth counties.

Visit AdventHealthKC.com for more information.



Thank you to our 2019 Sponsors!

Corporate Partners



Corporate Sponsors

[Affinis Corp](#)

[CommunityAmerica](#)

[Credit Union](#)

[First National Bank](#)

[Foulston Siefkin LLP](#)

[JE Dunn Construction Company](#)

[Johnson County](#)

[Community College](#)

[Kansas City Power & Light](#)

[Kansas Gas Service](#)

[Saint Luke's Health System](#)

[The University of Kansas](#)

[Edwards Campus](#)

Leadership Circle Sponsors

AdamsGabbert

Farrell's eXtreme Bodyshaping -
Overland Park

Fortune Financial Advisors, LLC

To add your name to this list each month,
contact Tracey Osborne Oltjen
at (913) 491-3600 or
tosborne@opchamber.org.



9001 West 110th Street, Suite 150
Overland Park, Kansas 66210
(913) 491-3600 • www.opchamber.org

Unemployment

| | Apr. 2019 | Apr. 2018 |
|-----------------------|-----------|-----------|
| Overland Park | 2.7% | 2.7% |
| Johnson County | 2.7% | 2.7% |
| Kansas City Metro MSA | 3.8% | 3.4% |
| State of Kansas | 3.5% | 3.4% |

(Percentages not seasonally adjusted)
– Kansas Labor Information Center (KLIC)

Building Permits

| | April 2019 | Square Feet | Value |
|------------------------|------------|---------------|---------------------|
| New commercial | 2 | 5,780 | \$577,229 |
| Institutional, Schools | 2 | 22,066 | \$2,806,354 |
| Other commercial | 48 | 2,207 | \$18,766,952 |
| Totals | 52 | 30,053 | \$22,150,535 |

– City of Overland Park

Overland Park Retail Sales February 2019

