

Business Perspective

October 2018



Vote on November 6!

Learn about the candidates at www.VoteJoCo.com where you'll find candidates' responses to a questionnaire on important business issues and also video of candidate forums hosted by the Johnson County Public Policy Council.



Upcoming candidate forums hosted by the Overland Park Chamber:

Kansas House District 48
October 4, 2:30-3:30 p.m.

- David Benson (D)
- Rep. Abraham Rafie (R)

Kansas House District 28
October 15, 3:15-4:15 p.m.

- Brian Clausen (D)
- Kellie Warren (R)

Kansas House District 16
October 17, 3:15-4:15 p.m.

- Rep. Cindy Holscher (D)
- Sue Huff (R)

Kansas House District 29
October 4, 3:45-5:15 p.m.

- Robert Firestone (L)
- Rep. Brett Parker (D)
- James Todd (R)

Kansas House District 27
October 15, 4:30-5:30 p.m.

- Nicole Rome (D)
- Rep. Sean Tarwater (R)

Johnson County Commission District 4
October 17, 4:30-5:30 p.m.

- Jane Hanzlick
- Jason Osterhaus (Incumbent)

Kansas House District 20
October 15, 2:00-3:00 p.m.

- Becky Barber (D)
- Rep. Jan Kessinger (R)

Kansas House District 8
October 17, 2:00-3:00 p.m.

- Chris Croft (R)
- Michele Lobitz (D)

Johnson County Commission District 1
October 23, 4:30-5:30 p.m.

- Leawood Library, 4700 Town Center Drive
- Becky Fast
- Ron Shaffer (Incumbent)

These forums held at the Overland Park Chamber, 9001 West 110th Street, except where noted.

All times are approximate. Numerous other candidate forums are being hosted by the Johnson County Public Policy Council and can be viewed at www.votejoco.com. Video of forums (when available) will be posted soon after event.

For more information on voting in Johnson County: www.jocoelection.org.

Chamber Annual Meeting

Wednesday, December 5

11:30 a.m.-1:30 p.m.

Overland Park Convention Center
6000 College Boulevard

Keynote Speaker:
Tommy Spaulding



New York Times bestselling author Tommy Spaulding is a leadership expert and nationally acclaimed speaker. His heartfelt message can transform your organization, build committed teams, earn lifelong customers and drive bottom line results in today's competitive global marketplace.

Event Sponsor:



Sponsorships Available!

Contact: Celia at (913) 766-7603 or cfritzwatson@opchamber.org

To register for this event, [click here](#) or call (913) 491-3600.

Our Mission:

To enhance the business environment and quality of life in our community.



Chamber Calendar

Candidate Forums

House Districts 48 & 29

Thursday, October 4 - 2:30-5:15 p.m.

Overland Park Chamber, 9001 West 110th Street

Ribbon cutting

Tuesday, October 9 - 4:00 p.m.

Ajilon, 10801 Mastin Street, Suite 600

Wednesday Wake-up

2018 Series Sponsor: Baker University

Wednesday, October 10 - 8:00-9:00 a.m.

Jason's Deli, 12010 Metcalf Avenue

Free and open to Chamber members only

Ribbon cutting

Thursday, October 11 - 4:30 p.m.

Brookridge Dentistry & Orthodontics,
9528 Antioch Road

Public Policy & Advocacy Committee

Discussing the 2019 Kansas Legislative Agenda

Friday, October 12 - 12:00-1:30 p.m.

Overland Park Chamber, 9001 West 110th Street

Candidate Forums

House Districts 20, 28 & 27

Monday, October 15 - 2:00-5:30 p.m.

Overland Park Chamber, 9001 West 110th Street

Candidate Forums

House Districts 8 & 16 and Johnson County

Commission District 4

Wednesday, October 17 - 2:00-5:30 p.m.

Overland Park Chamber, 9001 West 110th Street

Working Lunch

2018 Series Sponsor: Grantham University

Tuesday, October 23 - 12:00-1:30 p.m.

Pinstripes, 13500 Nall Avenue

\$25 for Chamber members only

Executive Leadership Series

2018 Series Sponsor: First National Bank

Featuring Lisa Ginter, CommunityAmerica

Tuesday, October 30 - 7:30-9:00 a.m.

DoubleTree by Hilton Kansas City-Overland Park, 10100 College Boulevard

To register for these events, [click here](#) or call (913) 491-3600.

Chamber Board and Staff

BOARD OFFICERS:

Brett Bogan, *Chairman*
Spencer Fane LLP
Mike Hess, *Chair-Elect*
HNTB Corporation
Stacie Gram, *1st Vice Chairman*
Swiss Re America Holding Corporation
Charles Laird, *2nd Vice Chairman*
Menorah Medical Center
Doug Lynn, *Secretary*
Sprint
Chris Wally, *Treasurer*
Wally & Co.
Michael Tracy, *Past Chairman*
OMNI Human Resource Management

BOARD MEMBERS:

Marshaun Butler, **Children's Mercy Hospital Kansas**
Faruk Capan, **Intouch Solutions**
Diana Chaloux-LaCerte, **Hitch Fit Gym**
Greg Crowley, **Crowley Furniture**
Jim Edwards, **Nothing Bundt Cakes**
Bill Ferguson, **Central Bank of the Midwest**
Dr. Michael Fulton, **Shawnee Mission School District**
Brenner Holland, **Hunt Midwest**
Craig Jeffries, **Empower Retirement**
Jodde Lanning, **Payne & Jones, Chartered**
Don Pearce, **Pearce Construction Company**
Karsten Randolph, **Shawnee Mission Health**
Bob Regnier, **Bank of Blue Valley**
Stephen Rhorer, **SPX Cooling Technologies**
Tony Rupp, **Foulston Siefkin LLP**
Mark Thomas, **Copaken Brooks**
Steve Troester, **PGAV Architects, Inc.**
Mark Williams, **Garver**

EX-OFFICIO BOARD MEMBERS:

Bruce Boettcher, **Sheraton Overland Park Hotel**
[Visit Overland Park board representative]
Dr. David Cook, **The University of Kansas Edwards Campus**
Bill Ebel, **City of Overland Park**
Mayor Carl Gerlach, **City of Overland Park**
Dana Markel, **Visit Overland Park**
Bobby Olm-Shipman, **St. Luke's South Hospital**
[2018 Chairman of Overland Park Chamber Economic Development Council]
Tracey Osborne Oltjen, CCE, Overland Park Chamber
Greg Wolf, **Dentons**

CHAMBER STAFF:

Tracey Osborne Oltjen, CCE, *President & CEO*
Stacey Cowan, *Membership Director*
Frank Ebling, *Controller*
Celia Fritz-Watson, *Director of Events & Member Services*
Tim Holverson, *IOM, Recruitment & Retention Director, Economic Development*
Chris Jackson, *EDC Policy & Communications Coordinator*
Beth Johnson, *CEcD, Senior Vice President of Economic Development*
Stan Lawson, *Communications Director*
Erin Murray, *Assistant to the President*
Tom Robinett, *Vice President of Public Policy & Advocacy*
Amy Stock, *Member Services Coordinator*

Difficult, but important conversations

As Johnson Countians we love our statistics. We rank highly on most of the coveted lists – for educational attainment, healthy living, income, economic growth, etc. Just recently Overland Park was named to three more lists – #1 - Best Places to Raise a Family by WalletHub.com, #-15 - Best Places to Live by Money, and #29 - Best Real-Estate Market by WalletHub.com. We're proud of these rankings because they represent an outstanding quality of life and business environment. But there are other numbers I want to focus on this month.

The Johnson County Mental Health Center has reported that teen suicides in Johnson County nearly doubled in the first six months of 2018. Unfortunately, this is not a recent phenomenon, with the Center for Disease Control reporting that the suicide rate has increased nationally 24 percent over the last 15 years. The Kansas City Star reported recently that suicide is the third-leading cause of death for children ages 5 to 14 and is the second-leading cause of death for ages 15 to 24. The National Institute of Mental Health reports that 90 percent of the 15 to 24 group had an underlying mental illness.

Leadership by all six Johnson County school district superintendents is raising awareness and creating action to address the mental health of our students. Recently each of our superintendents spoke to our Johnson County Presidents Council which represents our region's chambers. The collaboration among our districts is unprecedented, as is the sense of urgency they share when it comes to the protection of our kids and their families.

There have been countywide meetings of district leaders, mental health providers and advocates to discuss education, awareness and support for suicide prevention. There are amazing student-led efforts as well. The Blue Valley Education Foundation Annual Breakfast devoted much of its program recently to a powerful discussion. Speakers Superintendent Todd White, parent Mandy Shoemaker of BV Well, Dr. Adam Hamilton, Church of the Resurrection; and BV Northwest student Cynthia Dong representing the student-led mental health board, talked about the stigma of mental illness, and how to support students and families and provide ongoing support to reverse the trend of teen suicide.

The business community, too, has a key role in the mental health conversation. The Kansas City Business Journal recently featured a discussion with local experts. If you missed it, I recommend it as an excellent summary of factors related to mental illness such as loneliness and disconnection due to technology, along with some of the local resources available.

Prevention and proactiveness are crucial. Two programs highlighted in the Business Journal discussion were the ASIST program (applied suicide intervention and skills training) and Mental Health First Aid. Chamber member **Netsmart's** COO Tom Herzog said, "There has to be intention on our part as an employer." And they've done just that, by providing Mental Health First Aid training to any of their associates who are interested, training more than 500 associates so far.

(continued on page 5)



Tracey Osborne Oltjen, CCE, IOM
President & CEO
[@traceylosborne](https://twitter.com/traceylosborne)

Business Perspective is published monthly by the Overland Park Chamber of Commerce.

9001 West 110th Street, Suite 150, Overland Park, KS 66210

Phone: (913) 491-3600 • Fax: (913) 491-0393 • opcc@opchamber.org • www.opchamber.org

Maximize the time in your busy work day
by combining lunch with the opportunity
to cultivate new business relationships!



Tuesday, October 23

12:00-1:30 p.m.

Hosted by

PINSTRIPES
BISTRO BOWLING BOCCE

13500 Nall Avenue

2018 Series Sponsor

GRANTHAM
UNIVERSITY

Expand your network
while enjoying delicious
new American and
Italian foods.



\$25 per person for
Chamber members only.

To register, [click here](#) or call (913) 491-3600

For information on becoming a member, contact Stacey Cowan
at (913) 766-7604 or scowan@opchamber.org.

Build your business network!

Wednesday
Wake-up

A Business Before Hours

Wednesday, October 10

8:00-9:00 a.m.

Hosted by



5721 West 119th Street

Join us for networking and enjoy
samples from the [Jason's Deli](#)
breakfast catering menu including
fresh-cracked eggs, scrumptious
pastries, fresh fruit and more!



Free and open to Chamber members only.

To register, [click here](#) or call (913) 491-3600

Thanks to our Wednesday
Wake-up Series Sponsor:



Executive
Leadership
Series

INSIGHTS FROM THE TOP
Overland Park Chamber of Commerce

Join us for these programs
featuring executive insight
on business leadership.

Proudly sponsored by:



Tuesday, October 30

Breakfast program: 7:30-9:00 a.m.

DoubleTree by Hilton Kansas City-Overland Park

10100 College Boulevard

featuring

Lisa Ginter, CEO

CommunityAmerica Credit Union

Lisa Ginter joined [CommunityAmerica](#) in 1995
and has overseen nearly every function of the
Credit Union. In her first few years at CEO, she
advanced the organization to more than \$2.5
billion in assets and launched a series of new
business divisions and strategies helping members
achieve true financial peace-of-mind in their lives.

Ginter serves on the Board of Directors nationally for the Credit
Union National Association and also is an active leader with a breadth of
financial, civic and philanthropic organizations across the city.



Members: \$30 per person or \$330 for a reserved table of 10

Non-members: \$40 per person or \$440 for a reserved table of 10

To register, [click here](#) or call (913) 491-3600

Come hear Overland Park's good news
at our annual fun-filled breakfast!

GOOD MORNING
GMOP
OVERLAND PARK!

Friday, November 16

7:30-9:00 a.m.

Marriott Kansas City-Overland Park

10800 Metcalf Avenue

Something new is happening this year!

Watch your e-mail for details.

\$30 for members; \$40 for non-members

\$350 for a table of 10 for members;

\$450 for a table of 10 for non-members

Proudly sponsored by

Humana

To register, [click here](#) or (913) 491-3600

NEW MEMBERS / CHAMBER ANNOUNCEMENTS

Welcome new members!

We are pleased to introduce these new Chamber members:

Bambou Salon & Spa

Debbie Linder, Store Lead
11156 Antioch Road
Overland Park, KS 66210
(913) 341-1976
contact@bambousalons.com
www.bambousalons.com
Beauty Services, Spa - Day

CoStar Group Inc.

Kelli Griffith, Client Relationship Manager
4801 Main Street, Suite 300
Kansas City, MO 64112
(816) 516-9323
kgriffith@costar.com
www.costar.com
Real Estate - Commercial & Industrial, Real Estate

Edison Spaces

Jessica Renfrew, Director of Business Operations
4400 College Boulevard, Suite 200
Overland Park, KS 66211
(913) 850-6572
info@edisonspaces.com
www.edisonspaces.com
Office Space, Real Estate

Edison Spaces

7900 College Boulevard
Overland Park, KS 66211
(913) 850-6572
info@edisonspaces.com
www.edisonspaces.com
Office Space, Real Estate

Kinesphere Physical Therapy & Pilates

Katie Cornwell, Owner
Noelle Dowma, Owner/Physical Therapist
10880 Benson Drive, Suite 2370
Corporate Woods, Building 23
Overland Park, KS 66210
(816) 379-6899
info@kinespherept.com
www.kinespherept.com
Physical Therapists, Pilates

New Woman Obstetrics & Gynecology

Dr. Kari Farris, Physician/Owner
9209 West 110th Street
Overland Park, KS 66210
(913) 735-4726
kari.farris@newwomanobgyn.com
www.newwomanobgyn.com
Health Care, Physicians & Surgeons M.D.

Please support fellow Chamber members who have made investments to enhance the prosperity of our community!

Tiger-Rock Martial Arts of Overland Park

Justin Hubbard, Manager
8645 West 135th Street
Overland Park, KS 66224
(913) 851-5050
optigerrock@gmail.com
www.trmaoverlandpark.com
Martial Arts Instruction

Trinity Nursing & Rehab Center

Luis Jimenez, Administrator
9700 West 62nd Street
Merriam, KS 66203
(913) 384-0800
info@trinitynursingandrehab.com
www.trinitynursingandrehab.com
Skilled Nursing Facility, Rehabilitation Services

Two Maids & A Mop

William Hoffman, II, Franchise Owner
7419 Metcalf Avenue
Overland Park, KS 66204
(913) 624-9484
overlandpark@ineedamaid.com
www.twomaidsverlandpark.com
Cleaning Services

Wally & Co.

Chris Wally, Owner
(913) 693-4700
cwally@wallyandcompany.com
www.wallyandcompany.com
Real Estate - Commercial & Industrial

Xcel Roofing

Bryan Manning, Owner
24 Northwest Chipman Road
Lee's Summit, MO 64063
(816) 448-8208
bryan@loveourroof.com
www.loveourroof.com
Roofing, Windows - Replacement

Refer potential new Chamber members and earn Chamber credit when they become a member. Send referrals to Stacey Cowan at scowan@opchamber.org.

Chamber releases first-ever Local Public Policy Platform

For many years the Overland Park Chamber has released public policy platforms outlining federal and state issues identified as important for the business success of our members. Now, for the first time, the Chamber is confirming its positions on local issues (City of Overland Park and Johnson County) with the release of our 2018-19 Local Public Policy Platform. This document has been reviewed and approved by the Chamber's Public Policy and Advocacy Committee and its Board of Directors. It is intended to be an easy-reference guide for city and county officials as well as by Chamber members when public policy is being implemented that impacts local business.

A basis of the Local Public Policy Platform is support of the elements that contribute to quality of life: public education, public safety,

parks, recreation, arts, culture and entertainment, roads and transportation, housing and access to health care and mental health services. It encourages regular assessment of the continued availability of those elements and the evolution of the characteristics of a desirable quality of life. The Chamber believes the optimal way to accomplish that assessment and ongoing preservation of our quality of life is through the efforts of a local government most close to the people and comprised of officials elected through non-partisan elections. We also recognize the value of strong partnerships between local government and our local business community. The 2018-2019 Local Public Policy Platform can be found on the Chamber's website at www.opchamber.org - [click here](#).



New Chamber members were recognized at last month's Wednesday Wake-up networking event. Membership Director Stacey Cowan and Chamber Board Member Mark Thomas, **Copaken Brooks**, presented new members plaques to Justin Hubbard, **Tiger Rock Martial Arts**; Bryan Manning, **Xcel Roofing**; Craig Hammontree, **Open Works**; Susie Wheeler, **Body Guitar Clinic**; Debbie Linder, **Bambou Salon & Spa**; and Dr. Meghan Hamilton, **Brookridge Dentistry & Orthodontics**.



Member Renewals

We thank these companies for reinvesting in the Overland Park Chamber of Commerce in August 2018:

40-50 Years

Indian Creek Shopping Center, L.L.C.

20-39 Years

AAA Missouri
Buchanan Clarke Schlader LLP
Cross Manufacturing, Inc.
DLR Group
Downtown Overland Park Partnership, Inc.
HDR Engineering, Inc.
HTK Architects, P.A.
Lund, George W.
Martin, Pringle, Oliver, Wallace & Bauer, LLP
Parris Communications Inc.
Paychex, Inc.
SAFEHOME, Inc.
SPX Cooling Technologies
TranSystems
Wellington

10-19 Years

Affinis Corp
The Arts and Recreation Foundation of Overland Park
Benefit Services of Kansas City, Inc.
Conference Technologies, Inc.
Display Studios
Financial Engines
FLG Networking Services
J. Gilbert's Wood-Fired Steaks & Seafood
Kincaid Coach Lines, Inc.
Liberty Exposition Services, Inc.
Overland Park Host Lions Club
Olsson Associates
Parker Communications Group
Pete's Pest Control

5-9 Years

Aesthetic Surgical Arts
Canon Solutions America
Clarus Group
Drill Law Firm, LLC
Kansas City Web Design
Lansing Trade Group
Mirabile M.D. Beauty, Health & Wellness
Nothing Bundt Cakes Overland Park
Papa Kenos Pizzeria
Pickleman's Gourmet Cafe Overland Park
Rasmussen College
Santa Fe Tow Service Inc.
Titan Built, LLC

1-4 Years

Advantage Tech, Inc.
Arb Tech Kansas City
Block Real Estate Services, LLC
Casey's General Store
Core Bank
Curtin Property Company
Farmers Insurance - The Wertzberger Agency
Intouch Solutions
Jason's Deli
Kansas Leadership Center
LANE4 Property Group
Mariner Holdings
Mid-America Orthopedics Kansas City
Office Pride of Overland Park
Polestar Plumbing, Heating and Air
Price Brothers
REACH Healthcare Foundation
Shawnee PARC Post Acute & Rehabilitation Center
Team Construction
Tick Tock Escape Games
Workforce Partnership

President's Message cont. . . .

In September the Johnson County Commission approved additional funding to increase staffing at the Johnson County Mental Health Department. Walk-ins increased 10 percent in FY 2016-17 and are estimated to grow an additional four percent this next year. In real numbers? That was 6,128 people last year, some of whom were in crisis.

As we know, it's difficult to discuss these issues. Mental wellness is not yet as commonplace to talk about as heart health or cancer prevention, but the National Alliance on Mental Illness reports that approximately

one in five adults in the U.S. – 43.5 million (18.5%) – experiences mental illness in a given year. Conversations are beginning throughout our community – and our country, about mental wellness as a holistic part of our wellness plan. We devoted considerable time to the topic during our ForwardOP process as residents and community leaders told us it's a critical component of Overland Park's future success.

There are opportunities for you and your business to elevate awareness, and the health of our community. And most importantly, improve the lives of those around us, one at a time.

Click the advertisements on this page for details.



Oak Park

Advertise Here
New Digital Screens Now Available

- 65" digital display screens
- Full video and audio capabilities
- Save on print production costs
- 15 second spots on a 4-minute loop
- Displays during all mall hours on all 6 screens simultaneously

For pricing and more information, please contact:
Elizabeth Mathews
Elizabeth.Mathews@cblproperties.com
913.335.6189

RECENT EVENTS



City Council President Jim Kite, Chamber EDC Senior Vice President Beth Johnson and Chamber Diplomats helped Dr. Ryan Riggs and his team celebrate a ribbon cutting for the new Overland Park location of **Blue Sky Fertility**, 14253 Metcalf Avenue. Dr. Riggs trained at the distinguished Jones Institute for Reproductive Medicine at Eastern Virginia Medical School, where the first IVF baby in the United States was conceived. For more information: (913) 218-0162 or www.blueskyfertility.com.



City Councilmembers Dave White and Terry Happy Scheier, Chamber EDC Senior Vice President Beth Johnson and Chamber Diplomats helped Brad Marks and his team celebrate a ribbon cutting for **Kansas Regenerative Medicine Center**, 6650 West 110th Street. The center is devoted to advancing access and quality care in adult stem cell regenerative medicine to help people suffering from inflammatory and degenerative conditions. For more information: (913) 800-7555 or www.kansasrmc.com.



City Councilmember Terry Happer Scheier, Chamber EDC Director of Recruitment & Retention Tim Holverson and Chamber Diplomats helped Stephanie Molnar, Executive Director, and her team celebrate a ribbon cutting for the rebranding of **Shawnee PARC Post Acute & Rehabilitation Center**, 7600 Antioch Road. Shawnee PARC offers long-term care for those in need of 24-hour nursing care. For more information: (913) 383-2001 or www.shawneeparc.com.



City Councilmembers Dave White and Terry Happer Scheier and Chamber EDC Vice President Beth Johnson helped Cheryl Johnson and her team celebrate a ribbon cutting for the new headquarters of **Diagnostic Imaging Centers, P.A.**, 6650 West 110th Street. For more information: (913) 319-8400 or www.dic-kc.com.



City Council President Jim Kite, Chamber President Tracey Osborne Oltjen and Chamber Diplomats helped Tim Barton and Matt Druten, co-founders; and Jessica Renfrew, Director of Business Operations; celebrate a ribbon cutting for the opening of the newest **Edison Spaces**, 7900 College Boulevard. Edison offers fully furnished office space and shared amenities with flexible durations and sizes for shorter-term business needs. For more information: (913) 850-6572 or www.edisonspaces.com.



City Council President Jim Kite, City Councilmember Chris Newlin and Chamber Diplomats helped Beth Langdon, Director of Membership; Brian Harrison, General Manager; and members of **ACA Business Club** celebrate a ribbon cutting for their new location at 6840 West 105th Street. ACA is a private club that focuses on building high quality relationships among executives, professionals and business owners. For more information: (800) 793-2582 or www.acanetwork.org/kansascity.



hosted on August 30 by



Haley Lopez, **KCWE 29-TV**; Lettiann Southerland, **Lettiann & Associates Real Estate Services, LLC**; Carol Baber, **CliftonLarsonAllen LLP**.



Barbara Walker, **True North Hotel Group**; Pat Hoppa, **CliftonLarsonAllen LLP**; Abdullah Parker, **AdamsGabbert**; Joe Lillian, **Servpro of Leawood/Overland Park**; Sidra Connell, **Jason's Deli**; Jill Grotzinger, **Arts & Recreation Foundation of Overland Park**.



Ray Cole, **Consolidated Communications**; Leo Buse, **True North Hotel Group**; Anissa Garner, **Candlewood Suites Kansas City-Overland Park**; Julia Lynn, **Allied Global Services**; Jake Akehurst, **Johnson County Community College**.



hosted on September 20 by



Josh Bernal, **SLCKET**; Lisa Phlegar, **Q39**.



Erin Ronan, **Enterprise Bank & Trust**; and Debbie Sherrer, **Creative Planning**; and an ACA Business Club member.

RECENT EVENTS



Wednesday Wake-up A Business Before Hours

hosted on September 12 by



MENORAH MEDICAL CENTER



Patricia Mosby, **DexYP**; Trish Reedy, **PrimeLending**; Michelle Poston, **Infinitas Coordinated Wealth Counsel**.



Camille Kaldahl and Morgan Young, **Shawnee Mission Health**; Jean Fiorello, **National American University**.



Sherryl Nens, **Office Pride of Overland Park**; Jason Bahnson, **Heartland Payment Systems**; Dr. Dan Lorenz, **Specialists in Sports and Orthopedic Rehabilitation**; Mark Thomas, **Copaken Brooks**.



Celsie Sneden tells about her business, **NEAT Method Kansas City**.

Member Orientation on September 6



Dr. Michael Cartwright, **Cleveland University-Kansas City**, talks to attendees about being a Chamber Diplomat.



Chamber President Tracey Osborne Oltjen talks to attendees about the Chamber's programs and mission.

Save the Date!

Our next
Member
Orientation:
November 8
8:00 a.m.



Revealing the vision

Last month, a Reveal the Vision Open House provided a first glimpse at our community's draft vision and action plan as part of the Forward OP process to outline a path of continued success for the next 20-25 years. It is based on input from a community that cares about the future of Overland Park as a place to thrive, succeed and prosper. To complement these aspirations, the plan is grounded in an understanding of current conditions and trends. The vision plan will align all aspects of our community life and identify goals and specific actions for Overland Park to implement.

Forward 

Imagine Tomorrow ▶ Inspire Action

Vision:

Overland Park will lead as a forward thinking, innovative and welcoming community.

The action plan identified these key goals:

1. A welcoming place

where all people have access to high quality education, affordable healthcare, social services,

and a safe environment, and where the community works together for the greater good.

2. An engaged community that offers opportunities for people to interact with each other, local leaders and institutions that provide an array of civic services.

3. A high quality, sustainable and attractive built environment that offers a variety of choices including neighborhoods that offer the opportunity to live, work, and play and establishes Overland Park as a destination for business and family leisure travel.

4. A connected city that offers choices for mobility including well-maintained road networks, public transit, sidewalks, bike lanes, and trails with an emphasis on embracing new infrastructure technologies and future transportation modes.

5. A Strong Economy anchored by a diverse job base and positive city image that is attractive to investment and visitors allowing for a high quality of life for all people.

For more information: www.forwardop.org.



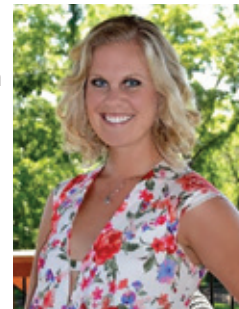
Chamber Diplomat Q&A

Shannon Riordan, [Lifted Logic](#),

10251 West 87th Street

Q: What is Lifted Logic?

A: A custom website design & development; all in-house from content to photo/video, design and build. As a Project Manager, I meet with the client to help determine the best strategy for the project, keep the project moving along from start to finish, and update the clients regularly on the status of their project. My main focus going forward will be with our on-going clients who continue to work with us after the website has launched to optimize SEO, implement SEM strategies, and continue with other writing, photo/video, design services we offer.



Q: Who do you find is a best connection / partner for you in business?

A: Still learning this for my new position; but other "connecters" are always great. Good partners can be others in marketing or consulting businesses that understand the importance of a quality, SEO optimized website for lead generation.

Q: Why are you a Chamber Diplomat?

A: I enjoy learning about other Overland Park businesses and helping connect people. I believe that in any organization you get out of it what you put into it and I want to help make the Chamber great. Plus, who doesn't love to start their day with a positive, powerful group of people?

Q: What has been your favorite benefit or moment as a member of the Overland Park Chamber?

A: I think the people are one of my favorite benefits. I've already had some great one-on-ones with Chamber members outside of organized Chamber events, plus reconnected with past friends in the short few months I've officially been a member.

Q: What is the best advice you've ever received?

A: Learn how to say no with grace and ease.

Q: What is your hidden talent or ability?

A: Disney Trivia knowledge

Q: What recent book / movie are you recommending to others?

A: "Power of Habit" by Charles Duhigg was the latest book I read and recommend.

To find out more about becoming a Chamber Diplomat, contact Stacey Cowan at scowan@opchamber.org or (913) 766-7604.

Chamber Diplomat Q&A

Adam Doran, [HighPointe Financial Group](#),
10975 Benson Drive

Q: What do you do at HighPointe Financial Group?

A: I help business owners and their employees save money, build wealth, and protect their income. At HighPointe, we're education-focused, and we like to make the complex, simple, so people can make informed financial decisions and feel confident about what they're doing with their money.



Q: Who do you find is a best connection / partner for you in business?

A: Public safety professionals, real estate and mortgage professionals, network marketing/direct sales professionals.

Q: Why are you a Chamber Diplomat?

A: I love networking and welcoming new businesses to the community, I love being connected to the areas where I live, work, and play, and people who know me tell me I'm good at being an ambassador for things I believe in.

Q: Where are you from / what brought you to Overland Park?

A: I grew up in Central Iowa. My former career as a police officer brought me to the KC area, where I've lived for almost 14 years. Overland Park has always been a place I frequent for shopping, dining, and fun. Now I work here, too!

Q: What is your hidden talent or ability?

A: I'm really good at fishing. There really is a skill to it. So if we were stranded in the wilderness and there was water available, we wouldn't starve.

Q: What do you consider your greatest achievement (so far)?

A: Starting my own business, sticking with it, and turning a profit. It's the hardest thing I've ever done.

Q: What has been your favorite journey?

A: My marriage to my wife. She helps me become more self-aware and better every day.

To find out more about becoming a Chamber Diplomat, contact Stacey Cowan [at scowan@opchamber.org](mailto:scowan@opchamber.org) or (913) 766-7604.

2019 membership directory offers advertising opportunities

The Overland Park Chamber's 2019 Membership Directory offers advertising opportunities for Chamber members. We are working with longtime partner **MetroMedia, Inc.**, to produce this publication.

To learn more about advertising in the directory, contact Kathy Moore, **MetroMedia Inc.**, at (913) 951-8441 or kmoore@metromediapublishers.com.

Complete and return your verification form to ensure your company information!

If you are the Chamber's primary contact at your business, please return your completed verification form as soon as possible. If you didn't receive the verification form and need it resent, please contact Amy at (913) 491-3600 or astock@opchamber.org.



Member News & Events

Ajilon is hosting an open house, 4-6:30 p.m. on **October 9** in its new office space at 10801 Mastin Street, Suite 600.

A reception is being held for Cathy Weaver, **Miracles With Water**, to celebrate her being named Women Business Advocate of the Year by the Kansas Department of Commerce's Office of Minority and Women Business Development, 5-7 p.m. on **October 16** at the Overland Park Chamber.

National Merit Semifinalists in the 2019 National Merit Scholarship Program include 57 **Blue Valley Schools** seniors, 13 **Shawnee Mission School District** seniors and 12 **Olathe School District** seniors. Semifinalists have an opportunity to advance in competition for awards worth about \$31 million, which will be offered this coming spring.

Hunt Midwest has secured leases with two tenants including **Parisi Cafe** for ground-level retail space at The Vue, its \$49M mixed-use redevelopment project under construction in Downtown Overland Park.

TechCycle Solutions is the new name of the former Device Pitstop, 6864 West 153rd Street, and is offering customized solutions for all device needs.

Mize Hizer & Company has launched a new service, Mize Restaurant Group Controllershship Services, to help McDonald's owner/operators manage accounting, financial, payroll and internal controls. Greg Harry and Christy Gurney have joined Mize Restaurant Group to work with McDonald's owner/operators nationwide.

KU Edwards Campus is collaborating with the KU Medical Center to meet the growing demand for health science professionals through a new post-baccalaureate certificate program.

AT&T has invested nearly \$725 million in its Kansas City wireless and wired networks during 2015-2017 to boost reliability, coverage, speed and overall performance for residents and businesses. The upgrades also improve critical services that support public safety and first responders.

(continued on the next page)

Sponsor Spotlight: Kansas Gas Service™

A Division of ONE Gas

Kansas Gas Service's mission is straightforward and simple: to deliver natural gas for a better tomorrow to more than 636,000 customers. And that starts with its employees and their commitment to provide safe and reliable natural gas service to 360 communities throughout Kansas.

Every day Kansas Gas customers count on them to warm homes, cook meals, dry clothes, heat water and power industry. It provides reliability, warmth, comfort and convenience to homes and businesses that rely on affordable energy.

Kansas Gas Service is a division of ONE Gas, Inc. (NYSE: OGS), a 100-percent regulated natural gas utility that trades on the New York Stock Exchange under the symbol "OGS." ONE Gas is included in the S&P MidCap 400 Index and is one of the largest natural gas utilities in the United States.

For more information, visit www.kansasgasservice.com or www.onegas.com.

For the latest news, follow on Twitter: [@KansasGas](https://twitter.com/KansasGas).

Click the ad below for details.




Last month, the Chamber's Economic Development Council Investors heard from Martin Rivarola, assistant director of Transportation and Land Use with the Mid-America Regional Council (MARC). Rivarola provided a look at the long-range transportation plan that MARC is developing as the Regional Transportation Plan 2050. MARC seeks input from the public as it plans how the region will manage and operate a multimodal transportation system that meets economic, transportation, development and sustainability goals. For more information: www.marc.org.

Unemployment

	August 2018	August 2017
Overland Park	3.1%	3.5%
Johnson County	3.1%	3.4%
Kansas City Metro MSA	3.9%	4.4%
State of Kansas	3.3%	3.6%

(These percentages are not seasonally adjusted)
– Kansas Labor Information Center (KLIC)

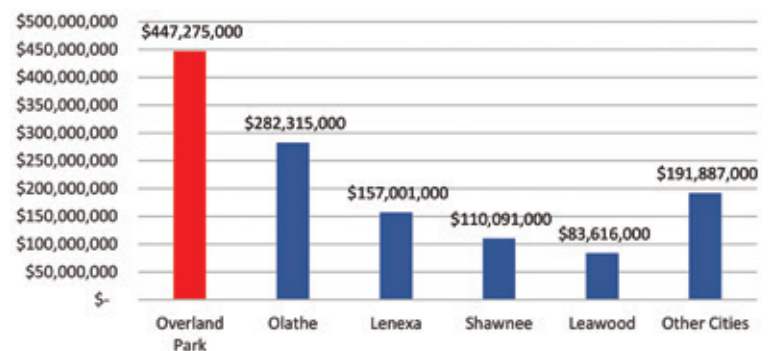
Building Permits in Overland Park

	New Commercial	New Non-Commercial	Other Commercial	Totals
Aug. 2018	2	0	62	64
Square Feet	142,456	N/A	22,866	165,322
Value	\$11,894,539	\$0	\$10,373,130	\$22,267,669

– City of Overland Park

Overland Park Retail Sales

June 2018



Thank you to our 2018 Sponsors!

Corporate Partners



Corporate Sponsors

[Affinis Corp](#)

[American Century Investments](#)

[Corporate Woods](#)

[Edward Jones](#)

[First National Bank](#)

[JE Dunn Construction Company](#)

[Johnson County
Community College](#)

[Kansas City Power & Light](#)

[Kansas Gas Service](#)

[Saint Luke's Health System](#)

[The University of Kansas
Edwards Campus](#)

Leadership Circle Sponsors

AdamsGabbert

Fortune Financial Advisors, LLC

OMNI Human Resource
Management

To add your name to this list each month,
contact Tracey Osborne Oltjen
at (913) 491-3600 or
tosborne@opchamber.org.



9001 West 110th Street, Suite 150
Overland Park, Kansas 66210
(913) 491-3600 • www.opchamber.org

Member News continued . . .

ArtsKC - Regional Arts Council announced 18 local artists who will receive financial support for transformative projects from its competitive Inspiration Grant program. ArtsKC also announced Ovation grant funding for 22 large arts organizations for fiscal year 2019.

Friends of **Johnson County Developmental Supports** is one of 16 nonprofits to receive a Community Service Tax Credit from the State of Kansas and will use the award to build new homes specifically designed to meet the accessibility needs of individuals with intellectual and developmental disabilities, as well as Alzheimer's and dementia.

WaterOne was recognized as having the "Best Tasting Water in Kansas" by the Kansas Section of the American Water Works Association at its 10th annual conference.

Lauren Solidum is the new president/CEO of **Catholic Charities of Northeast Kansas**.

Rod Smith, principal at **Olathe Public Schools'** Frontier Trail Middle School, has been honored as Kansas Middle School Principal of the Year.

Kimberly Megow, MD, MBA, FACHE, FAAP, has been named Chief Medical Officer for HCA Midwest Health, which operates **Overland Park Regional Medical Center** and **Menorah Medical Center**.

Dr. Craig Yager, an orthopedic surgeon, has joined **Mid-America Orthopedics**.

Jan Marrs SPHR, has joined Mize Houser & Company, PA, as Talent Leader.

Jonathan (Jon) D. Schmeidler, QKA, has joined **TPP Retirement Plan Specialists, LLC**, as a Senior Plan Administrator.

Amy Tysseling joined the **Blue Valley School District** Board of Education, filling an open position in District I that opened with the resignation of Pam Robinson.

To submit company news, [click here](#).

To submit events, [click here](#).