

Business Perspective

October 2019

Chamber mourns passing of Past Chairman Rick Worrel

The Chamber is tremendously saddened by the passing of our longtime friend and supporter, Rick Worrel, co-founder and president of Affinis Corp.

Rick's impact on our community will be felt for decades. He loved Overland Park and our Chamber and was the biggest cheerleader of our organization, its leaders and staff. He first became active in the Chamber as part of our 1997 Leadership Overland Park class. No matter how busy he was with career and family commitments, he gave us an incredible amount of his time and his passion, chairing the Chamber Board of Directors in 2012 and our Economic Development Council and enthusiastically serving on the Forward OP Steering Committee. Rick was intimately involved in the Chamber's public policy and advocacy efforts for years and he helped lead a motion to intervene in the



Kansas redistricting lawsuit that led to appropriate representation for Johnson County in the state legislature. Earlier this year, he took the reins of the Chamber Foundation as chairman. Rick leaves his widow Susan and daughters, Jill, Katie and Brooke. Words aren't adequate to express how Rick will be missed in our community. For an obituary, [click here](#).

Annual meeting to feature futurist/economist Rebecca Ryan

The Chamber's 2019 Annual Meeting will feature keynote speaker Rebecca Ryan, a futurist and economist known as the "Human Spark Plug."

Ryan is the Resident Futurist at the Alliance for Innovation, a Senior Advisor at the Governing Institute, a faculty member at the Institute for Zen Leadership, the founder of Futurist Camp, the inventor of Futures Labs, and the owner of NEXT Generation Consulting, Inc. Richard Florida, author of *The Rise of the Creative Class*, has called Ryan "one of the most reliable sources for CEOs and mayors who want to attract and keep the next generation of creative workers." She helps clients figure out

what's next so they can be ready for the future.

The Annual Meeting is 11:30 a.m.-1:30 p.m. on Thursday, **December 5** at the **Marriott Kansas City Overland Park**, 10800 Metcalf Avenue.

The **Presenting Sponsor** is **Security Bank of Kansas City**. Other sponsorships are available by contacting Celia Fritz-Watson at (913) 766-7603 or cfritzwatson@opchamber.org.



Our Mission:

To enhance the business environment and quality of life in our community.



Chamber Calendar

Executive Leadership Series

Wednesday, October 2 - 7:30-9:00 a.m.
Featuring Wendy Doyle, Women's Foundation
DoubleTree by Hilton, 10100 College Boulevard
\$30 per person or \$330 for a table of 10 for members
\$40 per person or \$440 for a table of 10 for non-members
2019 Series Sponsor: **First National Bank**

EDC Investors Lunch

Featuring economic development consultant Kate McEnroe
Thursday, October 3 - 11:30 a.m.-1:30 p.m.
Johnson County Community College, 12345 College
\$20 for Chamber members; \$30 for non-members; and
\$15 for additional EDC Investors; lunch included.

Wednesday Wake-up

Wednesday, October 9 - 8:00-9:00 a.m.
Saint Paul School of Theology, 13720 Roe Avenue
Free and open to Chamber members only
2019 Series Sponsor: **Fortune Financial Advisors**

Public Policy & Advocacy Committee

Friday, October 11 - 12:00-1:30 p.m.
Overland Park Chamber, 9001 West 110th Street
\$15 per person for members only; lunch included.

OP After Hours

Tuesday, October 15 - 4:30-6:30 p.m.
Fiorella's, 9000 West 137th Street
Free for Chamber members only
Presenting Sponsor: **Spectrum Reach**

Good Morning, Overland Park!

Friday, October 25 - 7:30-9:00 a.m.
DoubleTree by Hilton, 10100 College Boulevard
Chamber members: \$30 per person/\$350 for table of 10
Non-members: \$40 per person/\$450 for table of 10
Presenting Sponsor: **Humana**

To make reservations, [click here](#).

Ribbon cuttings & groundbreakings

Thursday, October 3 - 10:30 a.m.
Expansion ceremony for **AdventHealth South Overland Park**, 7820 West 165th Street
Thursday, October 10 - 1:15 p.m.
Career and Technical Education Center at **Johnson County Community College**, 12345 College Boulevard
Thursday, October 10 - 4:00 p.m.
Remodel of **Hampton Inn**, 10591 Metcalf Avenue
Thursday, October 17 - 4:00 p.m.
Virtue Chiropractic, 6511 West 119th Street
Tuesday, October 22 - 4:00 p.m.
Academy Bank, 6635 West 135th Street
Wednesday, October 23 - 4:00 p.m.
SVS Vision, 6976 West 135th Street

Chamber Board and Staff

BOARD OFFICERS:

Mike Hess, **Chairman**
HNTB Corporation

Bobby Olm-Shipman, **Chair-Elect**
Saint Luke's South Hospital

Bill Ferguson, **1st Vice Chairman**
Central Bank of the Midwest

Steve Troester, **2nd Vice Chairman**
PGAV Architects, Inc.

Doug Lynn, **Secretary**
Sprint

Chris Wally, **Treasurer**
Wally & Co.

Brett Bogan, **Past Chairman**
Spencer Fane LLP

BOARD MEMBERS:

Faruk Capan, **Intouch Group**

Greg Crowley, **Crowley Furniture**

Tim Danker, **SelectQuote**

Jim Edwards, **Nothing Bundt Cakes**

John Fuller, **DLR Group**

Dr. Michael Fulton, **Shawnee Mission School District**

Jim Hemenway, **Chicago Title**

Tom Herzog, **Netsmart Technologies**

Brenner Holland, **Hunt Midwest**

Craig Jeffries, **Empower Retirement**

Jodde Lanning, **Payne & Jones, Chartered**

Karsten Randolph, **AdventHealth Shawnee Mission**

Cindy Rock, **Thryv**

Stacy Rose, **AdamsGabbert**

Tony Rupp, **Foulston Siefkin LLP**

Matt Sheets, **First National Bank**

Joan Wells, **Wellington**

Mark Williams, **Garver**

EX-OFFICIO BOARD MEMBERS:

Dr. David Cook, **The University of Kansas Edwards Campus**

Bill Ebel, **City of Overland Park**

Mayor Carl Gerlach, **City of Overland Park**

Dana Markel, **Visit Overland Park**

Tracey Osborne Oltjen, CCE, **Overland Park Chamber**

Greg Wolf, **Dentons**

Brett Bogan, **Spencer Fane LLP**
[2019 Chairman of Overland Park Chamber Economic Development Council]

CHAMBER STAFF:

Tracey Osborne Oltjen, CCE, **President & CEO**

Stacey Cowan, **Membership Director**

Andie Drummond, **Member Services Coordinator**

Frank Ebling, **CFO**

Celia Fritz-Watson, IOM, **Director of Events & Member Services**

Tim Holverson, IOM, **Recruitment & Retention Director, Economic Development**

Chris Jackson, **EDC Policy & Communications Coordinator**

Beth Johnson, CECd, **Senior Vice President of Economic Development**

Stan Lawson, **Communications Director**

Erin Murray, **Assistant to the President**

Amanda Schumacher, **Special Projects**

Kevin Walker, IOM, **Vice President of Public Policy & Advocacy**

He raised his hand

Our hearts have been heavy these past few weeks at the Chamber and throughout Overland Park. On September 4 we celebrated the life of one of our favorite leaders, Rick Worrel.

Rick was a difference maker. He was one of the first to welcome me to Overland Park nearly fifteen years ago. Since then he has been part of nearly every major initiative and project of the Chamber. He was an LOP grad. He chaired our Government Affairs Committee, our Board of Directors, our Economic Development Council and had just begun his term chairing the Chamber's Foundation. He and his team at **Affinis** were long-time Corporate Sponsors and sponsor a room in our remodeled Chamber building. He was Chair when we were one of the intervenors in the Kansas redistricting lawsuit that led to appropriate representation for Johnson County in the Legislature.

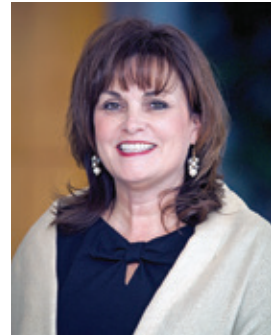
Rick was the guy who raised his hand when there was something to be done. When a question, even a hard one, needed to be asked. He was always collaborative, but never shy about defining or debating the business at hand.



devoted his time to community and economic development and initiatives like ForwardOP.

Our last conversation was just a few days before he died. He was on his way home and wanted to check in. Rick always cared about you, regardless of the business to be discussed, so first he asked about me. He knew I was headed to Joplin the next day for my best friend's funeral. Then we talked about his excitement to serve on the transition team that is working on an implementation plan for ForwardOP's goals. His evening plan was to help his daughter Katie with some geology homework then pack for his weekend trip to Nebraska to watch his youngest daughter Brooke play soccer. One call – compassion and friendship, community leadership, family. That's who Rick was.

It's no wonder that over the years he became one of my dearest friends. He showed me how to be a better person and better leader, though I still have much to learn from his example. Our office still seems a little quiet all these weeks later, I think because we're missing our most enthusiastic cheerleader. His "high-fives" were legendary, and he would often stop by to go down the hall to deliver one to each



Tracey Osborne Oltjen, CCE, IOM
President & CEO
[@traceylosborne](https://twitter.com/traceylosborne)

(continued on page 4)

Business Perspective is published monthly by the Overland Park Chamber of Commerce.

9001 West 110th Street, Suite 150, Overland Park, KS 66210

Phone: (913) 491-3600 • Fax: (913) 491-0393 • opcc@opchamber.org • www.opchamber.org

Executive Leadership Series

INSIGHTS FROM THE TOP

Overland Park Chamber of Commerce

Join us for these programs featuring executive insight on business leadership.

Proudly sponsored by:



Wednesday, October 2

7:30-9:00 a.m.

DoubleTree by Hilton Kansas City-Overland Park

10100 College Boulevard

featuring

Wendy Doyle, President & CEO

Women's Foundation

As President & CEO of the Women's Foundation, Wendy Doyle promotes equity and opportunity for women and their families, using philanthropy, research and policy solutions to make meaningful change. Wendy's nonprofit career includes working for the National Kidney Foundation, Inc. and Catholic Charities of Northeast Kansas, and serving on numerous local nonprofit boards.



Members: \$30 per person or \$330 for a reserved table of 10

Non-members: \$40 per person or \$440 for a reserved table of 10

To register, call (913) 491-3600

Come hear Overland Park's good news at our annual fun-filled breakfast!

GOOD MORNING



OVERLAND PARK!

Friday, October 25

7:30-9:00 a.m.

DoubleTree by Hilton Kansas City-Overland Park

10100 College Boulevard

Featuring the sophisticated humor of emcees:

Greg Musil, **Rouse Frets White Goss Gentile Rhodes, P.C.**

Aaron Attebery, **Black & Veatch**

\$30 for members; \$40 for non-members

\$350 for a table of 10 for members;

\$450 for a table of 10 for non-members

To register, [click here](#) or call (913) 491-3600

Proudly sponsored by

Humana

Build your business network!

Wednesday Wake-up

A Business Before Hours

Wednesday, October 9

8:00-9:00 a.m.

Enjoy networking over coffee and a light continental breakfast at **Saint Paul School of Theology**.

For 60 years, Saint Paul's purpose has been to form leaders for innovative, creative ministry to serve in congregations, communities, and the ever-changing world in which we live. This event is the perfect opportunity to see the new Kansas Campus featuring Zoom-technology classrooms, commons area, and library.

Hosted by



13720 Roe Avenue, Building C



2019 Series Sponsor:



Free and open to Chamber members only.

To register, [click here](#) or call (913) 491-3600

An evening of food, drinks & conversation!



Sponsored by



Tuesday, October 15

4:30-6:30 p.m.

Hosted by



9000 West 137th Street

Join us for a fun evening of food, drinks and mingling with your business colleagues.

You'll be among the first to experience Fiorella's, the newest chapter in

the fourth-generation family restaurant business. Fiorella's modern, elegant space can flex to host everything from small parties of 20 to big bashes up to 1,500 people.

Free and open to Chamber members only.

To register, [click here](#) or call (913) 491-3600



Diplomat Q&A

Amie Walter, American Cancer Society

American Cancer Society is the largest independent contributor to cancer research, second only to the federal government.

We work from many angles to attack cancer

and provide life-saving patient programs to ensure treatment isn't interrupted. My piece of that is working with volunteers to plan our signature fundraiser, Relay For Life.

Q: Who do you find is a best connection / partner for you in business?

A: While we work with a lot of hospital systems, another great partner is businesses looking for a team building opportunity where you can have a feel-good moment at the same time!

Q: Why are you a Chamber Diplomat?

A: I've lived and worked in the area most of my life, but I wanted to get better connected to the business community. It's a small world in the metro, but there's still so much to explore and get to know.

Q: What has been your favorite benefit or moment as a member of the Chamber?

A: I enjoy connecting people and helping expand networks. But this spring the Diplomats supported my organization by hosting a meal at our Hope Lodge, and that is my new favorite moment. It means a lot to each group that visits our facility, and it means a lot to me! Thank you Dips!

Q: What is the best advice you've received?

A: Take your least favorite part of your job and find a way to make it fun. Networking used to be that for me, I was intimidated by large, new groups of people and didn't want to go alone. I've found the events (and time of day) that work for my personality and branched out from there.

Q: What is your hidden talent or ability?

A: I have a Master's degree in Percussion Performance. I don't use that skill as much as I had planned, but I've performed with the Topeka Symphony the past 13 seasons!

To find out about becoming a Chamber Diplomat, contact Stacey Cowan at (913) 766-7604 or scowan@opchamber.org.



Vote on November 5!

Learn about the candidates at www.VoteJoCo.com

hosted by the Johnson County Public Policy Council, where you'll find candidates' responses to a questionnaire and also videos of candidates responding to questions about important business issues.

Races effecting Overland Park include these:

- City Council
- Johnson County Community College Board of Trustees
- Johnson County Water District
- School District Board of Directors

2019 General Election Calendar:

October 15 – Last Day to Register

October 16 – Advance Voting by Mail Begins

October 28 – Advance Voting in Person Begins

November 4 – Advance Voting in Person Closes at noon

November 5 – General Election



President's Message continued . . .

person on our team. His "thumbs-up" emoji was a classic message, as was him delivering a box of chocolate chip cookies. One of his beautifully scripted hand-written notes is something to be treasured.

Rick's friendship has been an extraordinary blessing. His leadership has made an impact in our community

that will be felt for decades. Rick accomplished much, but desired to do so much more. And while there is a hole in my heart and in our lives without him, the great truth is that we learned so many lessons from him. His legacy will be in how we carry them forward. #RaiseYourHand #TeamWorrel #BeLikeRick

Osborne Oltjen joins elite Committee of 100

Overland Park Chamber President Tracey Osborne Oltjen recently joined the Chamber of Commerce Committee of 100 (CCC100), an elite group of chamber executives that represents the perspectives and needs of chambers and their members to the U.S. Chamber of Commerce.

CCC100 members attend meetings on leadership, policy, and best practices. By identifying emerging issues that will impact chambers and their members, CCC100 advises the U.S. Chamber on programs and services for local and regional chambers and provides feedback on policy-related issues.

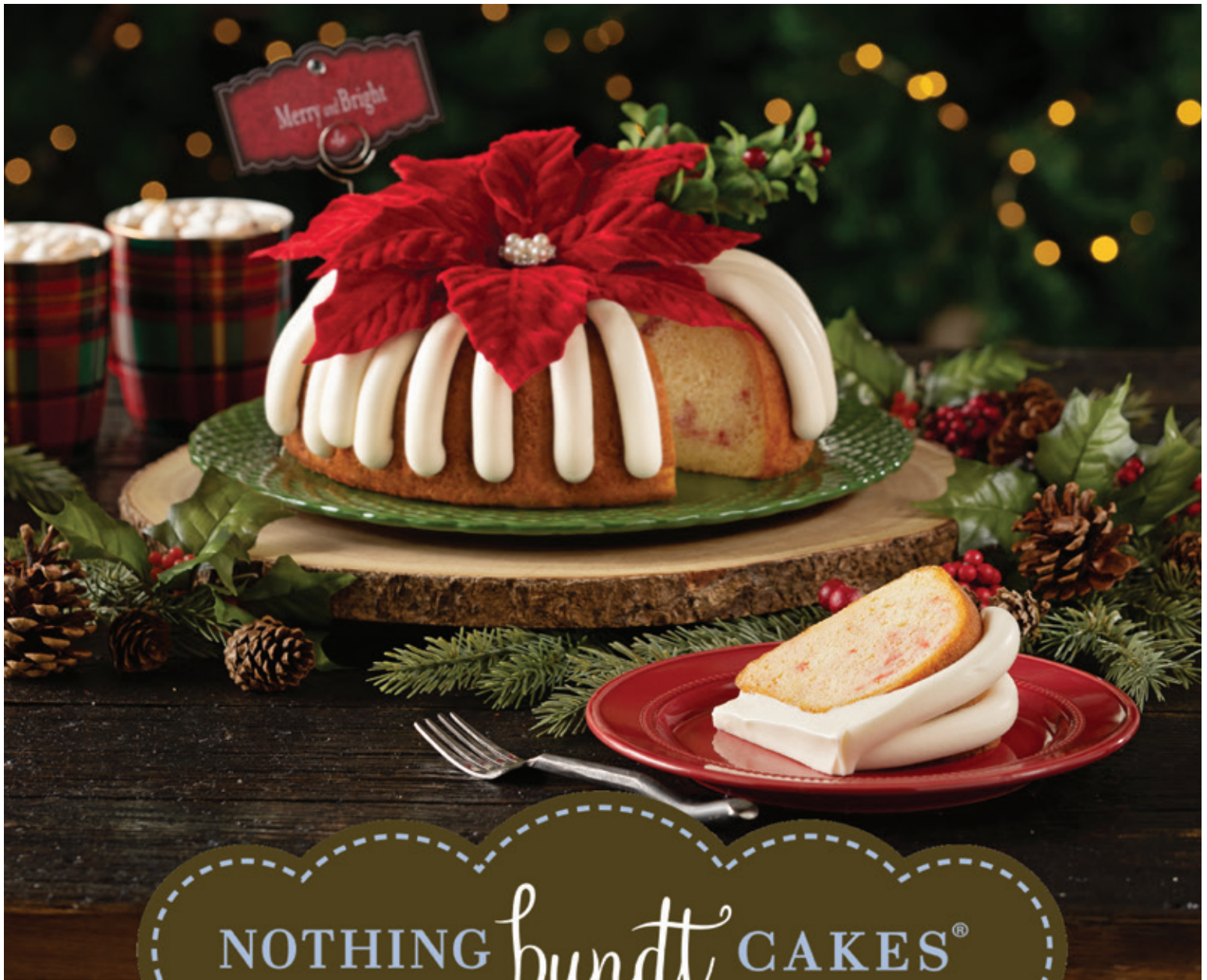
2020 directory offers ad opportunities

The Chamber's 2020 Membership Directory offers advertising opportunities for Chamber members.

Our longtime partner **MetroMedia, Inc.**, will produce this publication.

If you would like information about advertising in the directory, contact Kathy Moore, **MetroMedia Inc.**, at (913) 951-8441 or kmoores@metromediapublishers.com.

Click advertisement below for details



NOTHING *bundt* CAKES®

OVERLAND PARK
(913) 239-0252
THE SHOPPES AT DEER CREEK
13420 METCALF AVE
OVERLAND PARK, KS 66213

MISSION
(913) 384-2707
6850 JOHNSON DRIVE
MISSION, KS 66202

LEE'S SUMMIT
(816) 525-9000
910 NW BLUE PARKWAY (SUITE Y)
LEE'S SUMMIT, MO 64086

TIFFANY SPRINGS - NORTH KC MO
(816) 382-3800
8930 NW SKYVIEW AVENUE
KANSAS CITY, MO 64154

NEW & REINVESTED MEMBERS

Welcome new members!

We are pleased to introduce these new Chamber members:

88 Design Group

Josh Christie, Director |
Marketing & Business Dev.
3840 Greenway Circle
Lawrence, KS 66046
(913) 433-4103
joshc@88designgroup.com
www.88designgroup.com
Marketing Services, Website Design

Award Decals, Inc.

Dan Hirner, Owner
12507 Hemlock Street
Overland Park, KS 66213
(913) 677-6681
dan@awarddecals.com
www.awarddecals.com
Printing, Graphic Designers

Bickimer Homes

Tom Bickimer, Co-Owner
15621 West 87th Street, #294
Lenexa, KS 66219
(913) 780-2779
tom@bickimerhomes.com
www.bickimerhomes.com
Home Builders

Employee Benefit Professionals

Jacquelynn Neat, Employee
Benefits Specialist
12900 Metcalf Avenue, Suite
120
Overland Park, KS 66213
(913) 890-4713
jneat@ebpkc.com
www.ebpmidwest.com
Employee Benefits, Health Plans

Evergreen Concepts LLC

Gregory Gibson, Principal
Member
Shawnee, KS 66227
(913) 278-7164
Evergreenshawnee@gmail.com
Facility Services, Landscaping & Lawn
Services

The Great Frame Up in Overland Park

Mary Kaye Faubion, Owner/
Manager
14549 Metcalf Avenue
Overland Park, KS 66223
(913) 897-3200
mkaye247@gmail.com
www.OPFraming.com
Custom Picture Framing

Johnson County K-State Research and Extension

Tara Markley, Director
11811 South Sunset Drive, Suite
1500
Olathe, KS 66061
(913) 715-7000
jo@listserv.ksu.edu
www.johnson.k-state.edu
Government Offices-County

KC Pretzel Boy's

Dan Wikiera, Owner
9559 Nall Avenue
Overland Park, KS 66207
(913) 831-8955
dan@kcpretzelboys.com
www.kcpretzelboys.com
Bakery, Caterers

Lifetime Solar

Mark Grant, Project Manager
1509 Walnut Street, Suite 102
Kansas City, MO 64108
(573) 578-6750
mark@lifetimesolar.com
www.LifeTimeSolar.com
Energy Systems

My Success Principles

Heather Solomon, Founder & CEO
Olathe, KS 66062
(913) 952-0068
mysuccessprinciples@gmail.com
www.mysuccessprinciples.com
Training and Development
Referred by Lindsey Weathers, Elite
Physicals

Realty ONE Group Encompass

Mandy Frieling, Executive
Administrative Assistant
6639 West 135th Street
Overland Park, KS 66223
(913) 897-8244
mandy@rogencompass.com
www.realtyonegroup.com
Real Estate - Residential

Slush Your Mouth!

Rachel Caldwell, Owner
Overland Park, KS
(913) 214-6775
rachel@slushyourmouth.com
www.slushyourmouth.com
Event Services, Beverages

Sweet Tooth Pediatric Dentistry & Orthodontics

Denny Dobbins, Director of
Public Affairs
7381 West 133rd Street, Suite 303
Overland Park, KS 66213
(913) 239-0703
info@sweettoothpdo.com
www.sweettoothpdo.com
Dentists, Orthodontists

Tabard's Ale House

Michael Stephens, Owner
12030 Blue Valley Parkway
Overland Park, KS 66213
(913) 808-5688
tabardsl@tabardsalehouse.com
www.tabardsalehouse.com
Restaurants, Caterers

Yoga Six

Sybil Drbal, General Manager
6555 West 119th Street
Overland Park, KS 66209
(913) 660-9320
overlandparkgm@yogasix.com
www.yogasix.com/overlandpark
Yoga, Fitness

Member Renewals

We thank these companies for reinvesting in the Overland Park Chamber in August 2019:

40-49 Years

Indian Creek Shopping Center, L.L.C.
INTRUST Bank
Sprint

20-39 Years

AAA Missouri
THE Athletic Club by TruFit
Blue Valley Education Association
Cross Manufacturing, Inc.
DLR Group
Downtown Overland Park
Partnership, Inc.
Hy-Vee Food & Drug Store #1
George W. Lund
Wellington
Wells Fargo Advisors

10-19 Years

Affinis Corp
The Arts and Recreation
Foundation of Overland Park
Batteries Plus Bulbs #282
Emporia State University - Kansas
City
FLG Networking Services
Pete's Pest Control

Red Robin Gourmet Burgers-
South Overland Park
Talk of the Town Grill & Bar

5-9 Years

Academy Bank
Aesthetic Surgical Arts
DeFraim & Million CPAs, LLC
Drill Law Firm, LLC
Engage Advisors
Garver, LLC
Mirabile M.D. Beauty, Health &
Wellness
Morningside Place Alzheimer's &
Memory Support
MW Builders, Inc.
Netsmart Technologies
New Birth Company
Nothing Bundt Cakes Overland
Park
Papa Kenos Pizzeria

1-4 Years

Bambou Salon & Spa-College &
Antioch
Core Bank
Curtin Property Company

Farmers Insurance - The
Wertberger Agency
Intouch Group
Kansas Leadership Center
Lettiann & Associates Real Estate
Services, LLC
Mariner Holdings
McCallum Place Eating Disorder
Centers
Mid American Credit Union
New Woman Obstetrics &
Gynecology
OpenWorks
PrimeLending
Red Door Woodfired Grill
Saint Paul School of Theology
Servpro of Leawood/Overland Park
Shawnee PARC Post Acute &
Rehabilitation Center
The Sheridan at Overland Park
Snyder Law Firm LLC
Spectrum Eyecare
Stephens & Associates Advertising
Inc.
Team Construction
Vein Clinics of America
WW

Click advertisement below for details

LET US BRING
the Q
to you!

TREAT EVERYONE TO
MASTERFULLY MADE BBQ.



CHAMPION BBQ PACKAGE:
STARTING AT \$12.95 PER PERSON

GRILL OUT PACKAGE:
STARTING AT \$17.95 PER PERSON

PIT MASTER'S FAVORITES:
STARTING AT \$14.95 PER PERSON

VISIT Q39KC.COM/CATERING TO LEARN MORE



CONTACT THE CATERING TEAM TODAY:

MIDTOWN: 816.255.3753 EXT 3 | SOUTH: 913.951.4505 EXT 3
Q39KC.COM | FOLLOW US ON SOCIAL @Q39KC



RECENT EVENTS



U.S. Representative Sharice L. Davids addressed Chamber members last month during a Washington Update luncheon.



City Council President Terry Happer Scheier and Chamber Membership Director Stacey Cowan helped the Bagby family and employees celebrate the grand re-opening of **B&B Overland Park 16**, 8601 West 135th Street. The 16-screen theatre has been outfitted with electric leather recliners, new screen concepts and a new bar and lounge, making it a premiere entertainment destination. For more information: (913) 871-5352 or www.bbtheatres.com/location/overland-park-16.

Click advertisement below for details



Mayor Carl Gerlach joined other community leaders to help Ora Reynolds, president and CEO, and other company representatives with **Hunt Midwest** celebrate the grand opening of **The Vue** in **Downtown Overland Park**.



City Council President Terry Happer Scheier, and Chamber representatives and Diplomats helped Rob Hill, Broker, and his team celebrate a ribbon cutting for **Realty ONE Group Encompass**, 6639 West 135th Street. For more information: (913) 897-8244 or [click here](#).



Some of our newest members were recognized with plaques at last month's Wednesday Wake-up hosted by **Saint Luke's South Hospital**. Receiving plaques from Chamber board members Bobby Olm-Shipman, **Saint Luke's South Hospital**; and Brenner Holland, **Hunt Midwest**; Chamber President Tracey Osborne Oltjen and Chamber Membership Director Stacey Cowan were Rachel Caldwell, **Slush Your Mouth**; Sam and Leslie Hess, **AlphaGraphics of South Kansas City**; Rob Hill, **Realty ONE Group Encompass**; Sybil Drbal, **Yoga Six**; Maria Andrew, **TravelHost Kansas City**; Jason and Michael Stephens, **Tabard's Ale House**; Kate Barlowe and Clare Warrington, **The Organizer Chicks**; Blake Anderson, **My WiFi Guy**; and Dan Wikiera, **KC Pretzel Boy's**.



Cheers **TO FUN & EASY**

Throw a holiday party stuffed with hours of game play, a flexible menu and plenty of event space.

[**topgolf.com/events**](https://topgolf.com/events)

RECENT EVENTS



City Council President Terry Happer Scheier and Chamber Senior Vice President Beth Johnson helped Mimi Rogers, president, and her team celebrate a ribbon cutting for the opening of **WaterWalk Kansas City Overland Park**, 11200 Glenwood Street. WaterWalk combines the most appealing features of an upscale hotel with the lifestyle of apartment living. For more information: (913) 956-0234 or www.waterwalkoverlandpark.com.



City Council President Terry Happer Scheier and Chamber President Tracey Osborne Oltjen helped Arbor Development's Kurt Rhoden and Craig Laderoute and their team celebrate a ribbon cutting for **Promontory Apartments**, 8961 Metcalf Avenue. Promontory is an exceptional community offering a unique mix of living, shopping and entertainment. For more information: (913) 871-4422 or www.promontoryapts.com.

Wednesday Wake-up

A Business Before Hours
hosted on September 11 by
Saint Luke's
SOUTH HOSPITAL



Alec Alvarez, **AdamsGabbert**; Brenner Holland, **Hunt Midwest**; Bobby Olm-Shipman, **Saint Luke's South Hospital**.



Erin Ronan, **Enterprise Bank & Trust**; Terrance Taffe, **Colonial Life**; Cindy Shelton, **Nifty Promotions**.

Chris Petruzzi and Lane Shartz, **Charlie's Car Wash**; Phillip, **Consolidated**; Julia Woods, **Saint Luke's Health System**; Clare Warrington, **The Organizer Chicks**.



Patrick Allen, **Saint Luke's Health System**; Phillip Burks, **Consolidated Communications**; John Frownfelter, **Johnson County Funeral Chapel and Memorial Gardens**; John Yates, **Mutual of Omaha**.



Mix & Mingle

hosted on
September 18 by

OVERLAND PARK
KANSAS
CONVENTION CENTER

Gabe Baki and Brody Johnson, both with **BHC RHODES**; Conner Beese, **Copaken Brooks**; Kaila Kirchner and Kirk McPhail, both with **BHC RHODES**.



Sponsor Spotlight:



For more than 160 years – 26 in Kansas City – [First National Bank](#) has committed itself to being a responsible corporate citizen and has maintained a passion for doing what is right for its customers. It prides itself on being a “great big, small bank,” large enough to meet all of your financial needs yet small enough to know you personally. Matt Sheets, the bank’s Kansas City Market President, believes First National Bank’s success is measured by that of each of its stakeholders – customers, communities, business partners, employees and the environment.

Soon, you will see the bank identified by a new logo – FNBO – which represents who it is and who it’s been for more than a century and a half: First National Bank of Omaha. This process will begin with crews replacing the existing First National Bank signage at all of our branch locations in the area with signs bearing the new logo. It accurately reflects the name and brand of the bank that has always served your financial needs and ensures consistency in how the bank represents itself across 100 locations in seven states.

In Johnson County, First National Bank’s ongoing commitment is demonstrated by its steady growth over the years to seven, full-service branches. In 2018, First National Bank invested more than \$680,000 in the Kansas City area, primarily in partnerships designed to help individuals gain employment, advance their careers and improve their financial well-being, as well as in organizations that create access to the arts, culture and athletics. First National Bank will again serve as presenting sponsor of the Overland Park Arboretum’s Luminary Walk, and proudly sponsored the 50th season of Theater in the Park. New for the bank this year was a co-presenting sponsorship of the Overland Park Farmers Market, a vibrant public gathering in our community for more than 35 years.

At First National Bank – now FNBO – you won’t find a one-size-fits-all approach. The bank offers a wide range of financial products and services for a diverse group of clients, and its employees are dedicated to building effective, long-lasting relationships. Find them at www.fnbo.com, visit a branch in Fairway, Olathe, Overland Park or Shawnee, or call (913) 266-7000.

Participation in 2020 Census important for community funding

The 2020 U.S. Census is just months away. A complete, accurate, and comprehensive census means more federal funding for programs in our schools, roads, and hospitals, fairer representation in Congress, and provides critical data for effective decision-making by our local, state, and federal government and local businesses.

The Census Bureau is hiring for a variety of temporary jobs including census takers, recruiting assistants, office staff and supervisory staff.

You can learn more about what’s going on in Johnson County to ensure we get to as close to complete participation as possible at www.CountMeInJoCo.org.

Unemployment

	August 2019	August 2018
Overland Park	3.0%	3.1%
Johnson County	3.0%	3.1%
Kansas City Metro MSA	4.0%	3.5%
State of Kansas	3.2%	3.3%

(These percentages are not seasonally adjusted)
– Kansas Labor Information Center (KLIC)

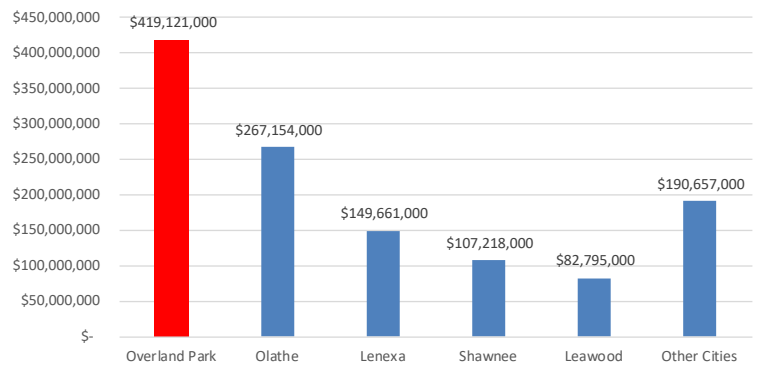
Building Permits in Overland Park

	New Commercial	Institutional, Schools	Other Commercial	Totals
August 2019	2	0	38	40
Square Feet	12,319	0	16,717	29,036
Value	\$1,302,546	\$0	\$13,521,744	\$14,824,290

– City of Overland Park

Overland Park Retail Sales

June 2019



Thank you to our 2019 Sponsors!

Corporate Partners



Corporate Sponsors

[Affinis Corp](#)

[CommunityAmerica
Credit Union](#)

[First National Bank](#)

[Foulston Siefkin LLP](#)

[JE Dunn Construction Company](#)

[Johnson County
Community College](#)

[Kansas City Power & Light](#)

[Kansas Gas Service](#)

[Saint Luke's Health System](#)

[The University of Kansas
Edwards Campus](#)

Leadership Circle Sponsors

AdamsGabbert

Fortune Financial Advisors, LLC

To add your name to this list each month,
contact Tracey Osborne Oltjen
at (913) 491-3600 or
tosborne@opchamber.org.



9001 West 110th Street, Suite 150
Overland Park, Kansas 66210
(913) 491-3600 • www.opchamber.org

Member News & Events

AdventHealth South Overland Park is holding a ceremony at 10:30 a.m. on **October 3** for the groundbreaking of a expansion to its 85-bed hospital.

Johnson County Community College is celebrating the opening of the Hugh L. Libby Career and Technical Education Center at 1:15 p.m. on **October 10**.

Botanical Brewfest, the most beautiful beer tasting event in the metro, is **October 12** at the **Overland Park Arboretum & Botanical Gardens** with music and dancing, 15 featured restaurants and more than 100 craft beers.

The Home Builders Association of Greater Kansas City's Fall Parade of Homes featuring nearly 300 new homes continues **through October 13**.

Academy Bank has opened a new retail banking center at 6976 West 135th Street.

All six **Johnson County Wastewater** treatment facilities were among those recognized for outstanding performance in 2018 by the National Association of Clean Water Agencies' annual Peak Performance Awards.

Johnson County Community College and the **University of Saint Mary** have signed a credit hour transfer agreement.

Cleveland University-Kansas City has partnered with The Caritas Clinics to provide complementary chiropractic care to patients coming to receive various free healthcare services.

Baker University's Bachelor of Science in Nursing program was ranked #1 in Kansas by RN Careers.

The Builders' Association was awarded the Community Labor Partner Award from the Boy Scouts' Heart of America Council.

AdventHealth Shawnee Mission has announced that Michelle Zech is the new vice president - human resources business partner for the Mid-America Region of AdventHealth.

Riordan Clinic has hired Dr. Gael Wheeler D.O. to join its Overland Park team.

To submit company news, [click here](#).

To submit events, [click here](#).