



Photo by Tracey Osborne Oltjen, CCE

Like an oil painting, the Chamber building is framed by a dramatic Kansas winter sunset.

Kansas legislators grappling with unemployment issues

LEGISLATIVE ISSUES

Unemployment continues to be one of the hottest topics during this year's legislative session.

As an advocate for the business community, the Chamber is focused on several key areas within the larger debate of unemployment and our state's trust fund. Top priorities include resolving wide-spread fraud that has illegally diverted money away from Kansans who have lost their job; creating new rate tables to ensure future unemployment payments that fund the system are equitable, and modernizing the state's technological systems to ensure

responsiveness to the needs of employers and employees.

As we entered the pandemic at this time last year, the state's unemployment trust fund had a balance of more than \$1.2 billion – one of the most robust in the nation. However, the balance now could be depleted within a matter of months. We are working with lawmakers to ensure that new rate tables effectively replenish the fund in a manner that is fair and equitable to employers of all sizes and experience ratings. Without changes, the best rated employers in the state could see their UI tax rate increase by 490% on average. The

(continued on page 7)

Log in to make sure your contact information in the Chamber's database and communications preferences are up-to-date. To create an account, [click here](#) or contact Drew at daggus@opchamber.org or (913) 491-3600.

Events Calendar

Mayor's State of the City

Featuring Mayor Carl Gerlach and free to the public!

Presenting Sponsor: [Saint Luke's Health System](#)

Wednesday, March 3
12:00-12:45 p.m.

To register, [click here](#)

Ribbon cutting

Deka Lash, 11780 West 135th Street

Monday, March 8
4:00 p.m.

Powerful Voices Series

Exploring the Dynamic Landscape in the Search for Talent

Series Sponsor: [UnitedHealthcare](#)

Tuesday, March 9
3:30-4:45 p.m.

To register, [click here](#)

Virtual Wednesday Wake-up

Series Sponsor: [Fortune Financial Advisors](#)

Wednesday, March 10
8:00-9:00 a.m.

To register, [click here](#)

State of the County

Featuring Chairman Ed Eilert and free to the public!

Tuesday, March 30
11:00 a.m.

Community Blood Drive

Hosted by Overland Park Young Professionals

Tuesday, March 30
11:00 a.m.-3:00 p.m.

To register, [click here](#)

Board & Staff

Board Officers:

Bill Ferguson, 2021 Chairman
Central Bank of the Midwest
Tony Rupp, Chairman-Elect
Foulston Siefkin LLP
Joan Wells, 1st Vice Chairman
Wellington
Cindy Rock, 2nd Vice Chairman
Josh Beck, Secretary
MarksNelson
Chris Wally, Treasurer
Wally & Co.
Bobby Olm-Shipman, Immediate Past Chairman
Saint Luke's South Hospital
Mike Hess, Past Chairman
HNTB Corporation

Board Members:

Aaron Attebery, Black & Veatch
Sean Barnard, Bambou Salons & Spas
Patrice Brown, Yellow
Faruk Capan, Intouch Group
John Fuller, DLR Group
Tracy Garry, Empower Retirement
Matt Gunter, SelectQuote
Tom Herzog, Netsmart Technologies
Brenner Holland, Hunt Midwest
Angela Hurt, Veracity Consulting, Inc.
Dr. Tonya Merrigan, Blue Valley School District
Melody Rayl, Fisher Phillips LLP
Stacy Rose, AdamsGabbert
Allan Samson, T-Mobile
Rick Schier, CommunityAmerica Credit Union
Matt Sheets, FNBO-First National Bank of Omaha
Matt Sogard, Overland Park Regional Medical Center
Steve Troester, PGAV Architects, Inc.
Kim Winslow, Evergy
Jason Wright, JE Dunn Construction Company

Ex-Officio Board:

Dr. Andy Bowne, Johnson County Community College
Bill Ebel, City of Overland Park
Mayor Carl Gerlach, City of Overland Park
Dana Markel, Visit Overland Park
Matt Masilionis, Perspective Architecture + Design
[2021 Chairman of Chamber Economic Development Council]
Tracey Osborne Oltjen, CCE, Chamber
Greg Wolf, Dentons

Staff:

Tracey Osborne Oltjen, CCE, President & CEO
Drew Aggus, Member Services Coordinator
Stacey Cowan, Membership Director
Frank Ebling, CFO
Celia Fritz-Watson, IOM, Director of Events & Member Services
Tim Holverson, IOM, Director, Workforce & Business Growth
Chris Jackson, Research Analyst
Beth Johnson, CEcD, Senior Vice President of Economic Development
Stan Lawson, Communications Director
Erin Murray, Executive Assistant
Kevin Walker, IOM, Senior Vice President of Public Policy

Tracey Osborne Oltjen, CCE
Chamber President & CEO
[@traceylosborne](https://twitter.com/traceylosborne)



Who are you?

MESSAGE FROM OUR PRESIDENT

This is the question posed by Tommy Spaulding in his book *The Heart Led Leader*, and the question we asked the 2021 Leadership Overland Park (LOP) class in its opening session last month.

Tommy's book is the pre-read for LOP classes and sets the stage for the curriculum's personal development. Tommy believes defining your leadership philosophy is one of the most important steps you can take as a leader because it shapes your interactions in your business, in community organizations and with family and friends.

Each year we spend a portion of LOP's Opening Day exploring our preferred leadership styles through the Leadership Compass Exercise. Class members choose their most natural approach to work from the following directional descriptions:

- North (Get it Done: Goal-centered, assertive, and decisive)
- South (The Nurturer: Friendly, supportive, allows other to feel important)
- East (The Visionary: Innovative, risk taker, focuses on future thought)
- West (The Analyst: Practical, uses data to make logical/analytical decisions)

This class, like many others, predominantly divided into North and West with a friendly rivalry between the "get it done" and "get the correct info" camps. With only four Easts and three Souths, their visionary and caring voices would at first seem to be underrepresented, but in this case, numbers aren't the whole truth.

As leaders, we're tasked to draw upon skills from all directions of the compass during the day. Throughout discussion, each group acknowledged its gaps, pointing to the needs to pull in leaders from other groups to complete their teams. Norths focused on deadlines and getting to the desired goal. Wests to research the options, analyzing the data to ensure the best outcome, with Souths to keep the focus on team and the process with Easts to provide the "why" as they focus on the big picture and innovation needed to move forward.

Most of us are hybrids, strengthening skill-sets based upon what's needed for the job at hand. Wests may be NorthWests, or Souths really SouthEasts, adapting through the years, and sometimes utilizing different skills between work and home. OP is in great hands with this new class – creative, committed, capable and insightful about themselves and how perspectives of many are needed to accomplish our goals.



Mayor's State of the City

FEATURING MAYOR CARL GERLACH

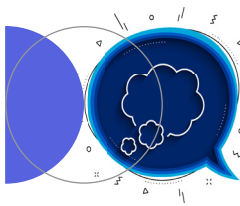
SPONSORED BY Saint Luke's HEALTH SYSTEM

Wednesday, March 3 - 12:00-12:45 p.m.

Join us virtually as Mayor Carl Gerlach presents his annual State of the City Address. The Mayor will focus on Overland Park's future and discuss the path city leaders have taken to bring about 60 years of success and build the city's reputation as one of the best places in the country to live and work.

This event is free to attend, thanks to the generosity of our **Event Sponsor: Saint Luke's Health System**

To register, [click here](#).



Powerful Voices Series

SPONSORED BY

United Healthcare

POWERFUL VOICES IN WORKFORCE TRAINING: EXPLORING THE DYNAMIC LANDSCAPE IN THE SEARCH FOR TALENT

Tuesday, March 9 - 3:30-4:45 p.m.

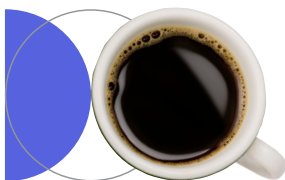
Businesses consistently report that attracting and retaining talent – the right people with the right skills – is a top priority. Join us to hear about regional needs and how the workforce development community is responding. We'll discuss innovative approaches to partnerships and how businesses can have the highest impact in shaping education and training in the future.

Featured panelists:

- Mickey McCloud, Johnson County Community College
- Stuart Day, The University of Kansas Edwards Campus
- Sheri Gonzales, KC Rising

To register, [click here](#).

Thanks to our Series Sponsor: [UnitedHealthcare](#)



VIRTUAL BUSINESS NETWORKING

Wednesday Wake-up

SPONSORED BY



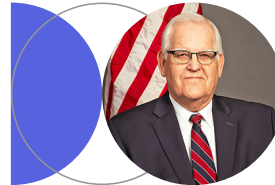
FOR CHAMBER MEMBERS ONLY

Wednesday, March 10 - 8:00-9:00 a.m.

Join us virtually to connect and exchange ideas with other Chamber members and hear Chamber updates. Breakout rooms provide opportunities for small group conversations and introductions.

To register, [click here](#).

Thanks to our Series Sponsor: [Fortune Financial Advisors](#)



State of the County

FEATURING CHAIRMAN ED EILERT

Tuesday, March 30 - 11:00 a.m.

Join us virtually to hear County Commission Chairman Ed Eilert's annual update on Johnson County projects, services and priorities, collaborative programs within the community, and ways county leaders are ensuring the economic strength of the most populous county in Kansas.

Registration available soon.



Community Blood Drive

HOSTED BY OP YOUNG PROFESSIONALS

Tuesday, March 30 - 11:00 a.m.-3:00 p.m.

Blood donors are essential. Our local blood supply must increase in order to meet local hospital need. Join Overland Park Young Professionals in donating during this upcoming Community Blood Drive at the Chamber building in Corporate Woods.

Appointments are strongly recommended; walk-ins are accepted, based on capacity

To register, [click here](#).



Executive Leadership Series

SERIES SPONSOR

FEATURING PETER MALLOUK, CREATIVE PLANNING



Tuesday, May 11 - 8:30-9:30 a.m.

Peter Mallouk is the featured speaker at our next Executive Leadership Series program.

Mallouk is president of [Creative Planning](#) and affiliated companies that provide comprehensive wealth management services. He has been featured in *Barron's* as one of the 'Top 100 Independent Financial Advisors in America' and was among *Worth* magazine's 'Power 100,' featuring the most powerful men and women in global finance in 2017 and 2018.

In 2017, *The New York Times* said "Creative Planning is at the vanguard of a profound shift in finance." Join us to hear leadership insights from this successful entrepreneur.

Registration available soon.

Thanks to Series Sponsor: [FNBO-First National Bank of Omaha](#)

Learn more about the opportunity to expand U.S. 69

Is your business in the U.S. 69 Highway corridor? Do you travel this major transportation spine frequently for business or personal trips?

The project team working on the U.S. 69 Corridor Modernization and Expansion Project is scheduling informational presentations with Q&A so groups

can learn more about the project.

Presentations are available for both community groups and businesses, especially those in the U.S. 69 Highway corridor.

To request a meeting, complete the request form at www.69express.org/feedback.

Thanks for your reinvestment!

FEBRUARY MEMBER RENEWALS INVESTING IN OUR COMMUNITY

50+ Years

Everygy

McGilley & Hoge Johnson
County Memorial Chapel
Security Bank of Kansas City -
95th Street

40-49 Years

Bodker Realty, Inc.
Overland Park Racquet Club
Yellow

20-39 Years

Allied Global Services
Axcet HR Solutions
Better Homes and Gardens Real
Estate-Phil Summerson
Blue Valley Recreation
Commission
Burnett Automotive, Inc.
Copaken Brooks
Dana F. Cole & Company, LLP
Gary C. Richter, C.P.A., P.A.
Heavy Constructors Association
Hyatt Place Overland Park/
Convention Center
Residence Inn by Marriott
Sonesta Simply Suites
United Community Services of
Johnson County
United Way of Greater Kansas
City

10-19 Years

Cleveland University-Kansas City
Delta Dental of Kansas
Harmon Construction, Inc.
PGAV Architects, Inc.
Quality Inn

Savage & Browning LLC
Sporting Kansas City
Stallard Technologies, Inc.
Synergy Wealth Solutions
The Tasteful Olive Oil and
Vinegar Shop

5-9 Years

Academy Bank-College
Boulevard
Fogel-Anderson Construction
Kansas City Regional
Association of Realtors
Premier Volvo Cars Overland
Park
Suture Express

1-4 Years

Apartment Association of
Kansas City
Arcadia at Overland Park
Brain Balance
Cavern Technologies
City Publications KC
Club 27 Restaurant
Comfort Keepers of Overland
Park
First State Bank
Great Plains SPCA
Hampton Inn & Suites Overland
Park South
Lewer Financial Advisors
Lexington Farms Apartments
Likens & Haines, P.A.
Plowboys Barbeque
Rhycom Advertising
Riordan Clinic
Strauss Peyton
Swartz + Associates, Inc.
TFI Family Services
Tiger-Rock Martial Arts of
Overland Park
Veracity Consulting, Inc.

2020 LOP class establishes scholarship

The 2020 Leadership Overland Park (LOP) class has established the Leadership Overland Park (LOP) Educate & Elevate Scholarship, an educational fund to help in-need residents of Johnson County gain a professional or technical career.

In the first year of the scholarship, preference will be given to an individual impacted by the

COVID-19 pandemic.

Applications are being accepted through April 16. The award for 2021, to be announced at the 2021 LOP Graduation ceremony, is \$500. For the application form, [click here](#).

You can help support this ongoing educational fund. To make a donation, [click here](#).

Leadership class kicks off 2021 session

Our 2021 Leadership Overland Park (LOP) class held its opening retreat last month.

Class members participated in a leadership compass exercise, learned Overland Park history, had a virtual tour of the city with city staff and participated in a SWOT analysis that helped

them contemplate their visions for Overland Park.

This month the class will learn about state government while meeting state leaders and also have a session on health and social issues.

To view the class roster, [click here](#).



Jack Messer, Director of Planning & Development, led the LOP class on a virtual tour of the City of Overland Park and discussed challenges and opportunities.



Class members discussed Overland Park's strengths and weaknesses in the areas of health care, economic development, education, transportation, regionalism and quality of life.

Enhanced directory listings offer visibility

Chamber members can enhance their visibility by upgrading their free standard listing in our online membership directory at www.opchamber.org.

A Deluxe listing offers:

- Priority placement above standard listings
- Company logo
- Link on Google Maps
- Business description
- Company highlights
- Photo gallery

Deluxe listings are \$75 per year and you can change and add to your listing at any time.

To see an example of a Deluxe listing online, [click here](#).

To activate your Deluxe listing, add content and pay for your enhanced listing, [click here](#).

If you would like assistance with this process, contact Drew at daggus@opchamber.org or (913) 491-3600.



U.S. Representative Sharice Davids presented a virtual Washington Update to our members last month. She spoke on priority issues including COVID relief efforts for businesses and individuals, improving the vaccination supply for Kansans and committee work on infrastructure to develop a broad-based plan for future projects.

Welcome to the Chamber!

INTRODUCING OUR NEWEST MEMBERS

Chiefs Fit – Opening Soon!

Ron Gochee, General Manager
9290 Metcalf Avenue
Overland Park KS 66212
(816) 510-2403
rgochee@chiefssfit.com
www.chiefssfit.com
Fitness, Health & Wellness

FastSigns Blue Valley

Teresa McKinzie, Owner
16012 Metcalf Avenue, Suite 100
Overland Park, KS 66085
(913) 912-5536
2341@fastsigns.com
www.fastsigns.com
Banners, Signs

iFocus Marketing

Kristina Spooner, Digital Marketing Advisor
4400 College Boulevard, Suite 325
Overland Park, KS 66211
(913) 708-8567
crandell@ifocusmktg.com
www.iFocusmktg.com
Advertising, Marketing Services

HR Mavis, LLC

Mary Varela-Spooner, Owner
(540) 419-7852
mavspooner@hrmavis.com
www.hrmavis.com
Human Resource Consultants
Referred by Blake Anderson, Zenith Technology Services

Kore Lab Solutions

Okturia “Wynde” Ross
8775 Metcalf Avenue
Overland Park KS 66212
(913) 499-6956
wynde.ross@korelabsolutions.com
www.korelabsolutions.com
Health Care, Laboratories

Marla Williams Agency

Marla Williams, Owner
7269 West 97th Street
Overland Park, KS 66212
(913) 815-1725
marla@marlawilliamsagency.com
www.marlawilliamsagency.com
Insurance

NCRI-National Catastrophe Restoration, Inc.

Elaina Huffman, Business Development
8065 Flint Street
Lenexa, KS 66214-3335
(913) 663-4111
e.huffman@ncricat.com
www.ncricat.com
Fire & Water Damage Restoration, Cleaning Services

Referred by Becky Hundelt, WaterWalk

Overland Park Veterinary Emergency and Specialty

– Opening Soon!
Elizabeth Talkington, Hospital Administrator
8301 West 163rd Street
Overland Park, KS 66223
(913) 361-3800
www.overlandparkvet-erinaryspecialists.com
Veterinary Clinics & Hospitals

PRINT & SHIP KC

Michaela Garlett
11750 West 135th Street
Overland Park, KS 66221
(913) 681-6688
storeop@printandshipkc.com
www.printandshipkc.com
Digital Printing & Imaging, Printing

Santa Fe Liquors

Patrick Allen, Owner
8708 Santa Fe Drive
Overland Park, KS 66212
(913) 232-8161
santafeliqorsop@gmail.com
www.santafeliqors.com
Liquor Stores, Retail

Who would you like to refer to the Chamber?

Connect them to Stacey at scowan@opchamber.org and receive a credit when they join.

School of Rock Overland Park

Tanya Riley, General Manager
9296 Metcalf Avenue
Overland Park, KS 66212-1478
(913) 642-7625
overlandpark@schoolofrock.com
locations.schoolofrock.com/overlandpark
Music Instruction

Sonesta Simply Suites

Anissa Garner, Director of Sales
11001 Oakmont Street
Overland Park, KS 66210-1187
(913) 469-5557
anissa.garner@sonesta.com
www.sonesta.com
Corporate Lodging, Hotels

Urban Air Trampoline Park

Joe Van Deusen, Owner
14401 Metcalf Avenue
Overland Park KS 66223-2990
(913) 298-0626
www.UrbanAirOP.com
Entertainment, Amusement Places

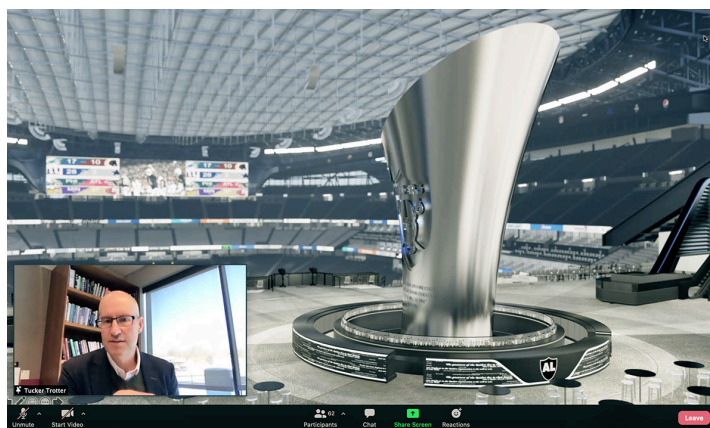
Chamber president joins LaunchCode advisors

Chamber President Tracey Osborne Oltjen has been named to the inaugural Kansas City Regional Board of Advisors for LaunchCode, a nonprofit providing free job training and placement in web and software development. She joins nearly two dozen business and community leaders in the effort to expand access to job-focused

digital skills and meet growing local tech workforce needs.

“Talent development is a top priority for our business community. I’m excited to join area leaders in this opportunity to open doors to digital careers and create greater economic impact throughout the region,” Osborne Oltjen said.

For details, [click here](#).



Tucker Trotter, CEO of [Dimensional Innovations](#), shared his unique leadership journey as the featured speaker at last month’s program of the Executive Leadership Series, which is sponsored by [FNBO-First National Bank of Omaha](#).

If you missed Tucker’s presentation, you can watch the recording – [click here](#).



Our Young Professionals (YPs) participated in a virtual Happy Hour last month that also featured a fun-filled “Find the Fib” activity. Watch for announcements about upcoming YPs programs. If you or someone you know is interested in participating in YPs programs, contact Drew at daggus@opchamber.org.

Thanks to our YPs sponsors: [BHC RHODES](#), [Kansas State University Olathe](#) and [Parisi Coffee](#).

HCA helps make us one of nation’s healthiest communities

CORPORATE PARTNER SPOTLIGHT

Menorah Medical Center and Overland Park Regional Medical Center are part of HCA Midwest Health, Kansas City’s largest health care network, consisting of hospitals, outpatient centers, clinics, physician practices and surgery centers.

Every day, employees at these premier hospitals live out the mission of the organization: “Above all else, we are committed to the care and improvement of human life.”

Through community engagement, servant leadership and a commitment to the highest medical standards, [Menorah Medical Center](#) and [Overland Park Regional Medical Center](#) help make Overland Park one of the healthiest communities in the nation.

Both hospitals are part of the Sarah Cannon Cancer Institute. Menorah is the only hospital in Johnson County to offer both 3D mammography and 3D ultrasound; it is accredited by the National Accreditation Program for Breast Centers and is certified by the Mammography Quality Standards Act. The hospital is a Center of Excellence in Colorectal Surgery, Bariatric Surgery and is undergoing an expansion with a new state-of-the-art Neurosciences and Orthopedics Center.

Overland Park Regional Medical Center is home to Johnson County’s only Level II Trauma Center; the hospital is also an Accredited Stroke and Chest Pain Center. Overland Park Regional Medical Center is the premier area destination for Women’s and Children’s healthcare services. It offers the region’s only Maternal-Fetal Health Center to care for critically ill mothers and their babies under one roof. The hospital includes an antepartum unit, a labor and delivery unit, a Level III NICU and a Pediatric Center that offers pediatric specialty care, a dedicated Pediatric ER and pediatric inpatient and intensive care unit. The HCA Midwest Health Neonatal and Maternal Transport Team – based at Overland Park Regional Medical Center – are prepared 24/7 to safely deliver and care for premature or critically ill infants and care for mothers with high-risk pregnancies via ambulance or helicopter. Overland Park Regional Medical Center has four emergency rooms, including a pediatric emergency room and freestanding ERs in Olathe and Shawnee.

For more information, visit www.hcamidwest.com.




**MENORAH MEDICAL CENTER
OVERLAND PARK REGIONAL
MEDICAL CENTER**

Unemployment continued
lowest rated employers would see smaller increases averaging almost 25%. The inequities of the current rate tables must be fixed.

Fraud continues to be at the forefront of legislative discussion. Legislative Post Audit – the state’s auditing arm – estimated that \$600 million (24%) of the \$2.6 billion in federal and state unemployed payments

in Kansas could have been fraudulent. While KDOL pushes back on the actual value of fraudulent claims, they also concur that fraud exists and must be addressed.

Be assured the Chamber is working with lawmakers every day to represent our members. The stakes are incredibly high, and it is imperative that the voice of employers is heard.



How to Get a Vaccine
For a complete list of vaccination options in Johnson County, [click here](#).

Member News

YRC Worldwide is now **Yellow** – one company, powered by five brands. The company will be announcing how it is taking LTL shipping to the next level.

[Wellington](#) was acquired by Augco, a global leader in enterprise engagement and loyalty platforms.

(continued on the next page)

Chamber building offers affordable meeting space

Are you working remotely? The Chamber building offers a variety of options for those in need of a smaller work space during COVID-19. Our larger conference rooms also allow enough space for social distancing.

Conveniently located in Corporate Woods, our meeting space is ideal for events, training sessions, or a one-on-one interview.

For details, contact Drew at daggus@opchamber.org.

Submit a guest column for this newsletter

Chamber members are invited to share industry knowledge through a guest column in this monthly newsletter. Columns should provide general information beneficial to a wide range of business professionals, and be commercial-free and not promotional in nature. They might focus on best practices and ideally would be a timely topic addressing the current business environment or issues such as COVID-19.

For details, contact Stan at slawson@opchamber.org.

Get a jump on OSHA’s COVID-19 emergency temporary standard

GUEST COLUMN

Amid ongoing efforts to stop the spread of COVID-19, President Joe Biden on January 21 ordered the Occupational Safety and Health Administration (OSHA) to consider emergency temporary standards to reduce the risk of employees contracting COVID-19 in the workplace.

If OSHA decides emergency temporary standards, “including with respect to masks in the workplace,” are necessary, Biden’s executive order directs that the standards must be issued by March 15.

How Could This Directive Affect Employers?

Kansas and Missouri do not require employers to have written COVID-19 plans. But, according to a [January 27 report](#) by national labor and employment law firm Fisher Phillips, OSHA-approved standards have been enacted by approximately 20 states, including California, Michigan, Oregon and Virginia. Because Virginia’s plan falls in the middle in terms of stringency, it may serve as a model for federal standards. That plan requires many employers to, among other things:

Randy Clayton
Safety & Health Consultant
[Axcet HR Solutions](#)



- Adopt a written COVID-19 response plan,
- Train employees on COVID-19 safe practices,
- Assess how much employees are at risk for exposure to COVID-19 in their workplaces,
- Provide PPE and face coverings,
- Notify government agencies and other entities of positive exposures and
- Assess existing sick leave policies, number of shifts, etc., to determine if changing those policies will help prevent employee exposure to COVID-19.

To read the rest of this column, [click here](#).

Randy Clayton works with clients’ safety committees, writes customized safety programs, performs OSHA walk-throughs to evaluate job hazards and assists clients interfacing with OSHA.

Promote your business!

Gain visibility by sponsoring Chamber events and programs. For information: Celia Fritz-Watson at (913) 766-7603 or cfritzwatson@opchamber.org.

Corporate Partners



Corporate Sponsors

[Affinis Corp](#)

[CommunityAmerica Credit Union](#)

[Empower Retirement](#)

[Evergy](#)

[FNBO-First National Bank of Omaha](#)

[Foulston Siefkin LLP](#)

[JE Dunn Construction Company](#)

[Johnson County Community College](#)

[Kansas Gas Service](#)

[McCownGordon Construction](#)

[The University of Kansas Edwards Campus](#)

[The University of Kansas Health System](#)

To add your name to this list each month, contact Tracey Osborne Oltjen at (913) 491-3600 or tosborne@opchamber.org.

Save the date!

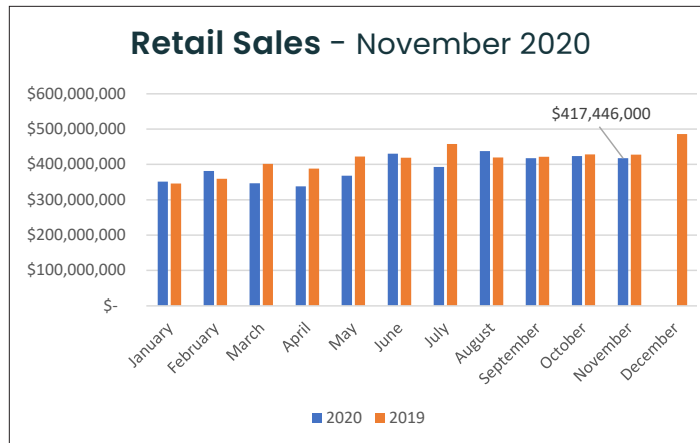
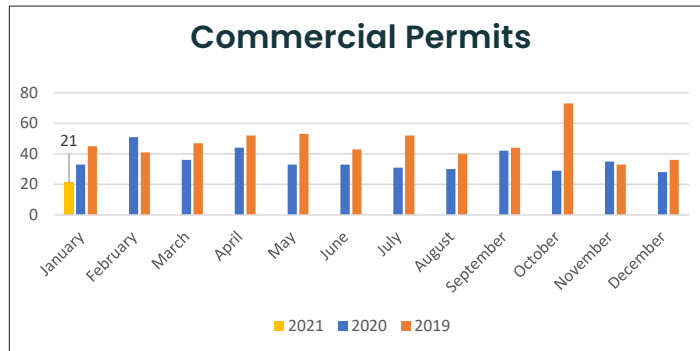
Mark your calendar and plan to participate in the Chamber Golf Tournament – **August 16** at [Nicklaus Golf Club at Lionsgate](#). This event is always a great opportunity to spend a beautiful afternoon on the golf course and network with fellow business professionals. To gain visibility as a tournament sponsor, contact Celia at cfritzwatson@opchamber.org.



Driving Economic Success

Building Permits				
	New Commercial	Institutional, Schools, etc.	Other Commercial	Totals
Jan. 2021	1	0	20	21
Sq. Feet	10,879	0	9,590	20,469
Value	\$1,384,788	N/A	\$22,727,012	\$24,111,800

– City of Overland Park



Business Perspective is published monthly by the Overland Park Chamber of Commerce, 9001 West 110th Street, Suite 150, Overland Park, KS 66210.
 (913) 491-3600 | Fax: (913) 491-0393
opcc@opchamber.org | www.opchamber.org

Member news cont.

[St. Joseph Medical Center](#) will be home to a new location of Concorde Career Colleges.

[AdventHealth](#) is the title sponsor of the AdventHealth Championship, formerly the KC Golf Classic, taking place **May 17-23**.

[Zenith Technology Services](#) is the new name of the former My WiFi Guy.

[The Inn at Meadowbrook](#) has achieved Global Biorisk Advisory Council® STAR™ accreditation, the gold standard for prepared facilities.

[AdventHealth Shawnee Mission](#) will administer COVID-19 vaccines to eligible residents each week through May 2021 at Church of the Resurrection.

[MBB](#) was recognized by the AAF-KC for creative excellence in the art of advertising with five American Advertising Awards.

[Fiorella's Jack Stack Barbeque](#) was named to Yelp's Top 100 Places to Eat in 2021.

[Shawnee Mission School District](#) has selected Dr. Michelle Hubbard as its new superintendent.

Leah FitzGerald is now managing director and market leader for [CBRE's](#) Kansas City office, succeeding Mike Klamm.

[Adams Brown](#) has hired Grey Wise to its client accounting services team.

[Lettiann & Associates Real Estate Services'](#) "Real Estate U With Lettiann" podcast featuring real estate tips, tricks and insights began its fourth season.

Valerie Jennings, [Jennings Social Media and Martech](#), was awarded international recognition with a Silver Stevie Award for female entrepreneur of the year in business services.

To submit news, events and promotions, [click here](#).