



Kansas Lieutenant Governor and Commerce Secretary David Toland joined Mayor Curt Skoog, City Manager Lori Curtis Luther and other officials to help celebrate a groundbreaking for AdventHealth Sports Park at Bluhawk. The 420,000-square-foot multi-sport complex will be one of the area's premier indoor multi-sport complexes and regional sports hubs. The first phase of the multi-sport complex will include four basketball courts, eight volleyball courts, eight pickleball courts, an indoor turf field for soccer, futsal, baseball, football, rugby, lacrosse, and indoor baseball training areas. *Photo courtesy of the City of Overland Park.*

The Chamber recognized Johnson County Chairman Ed Eilert with the 2022 Rick Worrel Community Legacy Award at our Annual Meeting on December 7. The event also featured the presentation of an OP Award to Gary Nevius, director of ForwardOP, and a keynote address by Joel Goldberg, longtime Kansas City Royals broadcaster. Presenting Sponsor of the Annual Meeting was [Netsmart Technologies](#).



## Chamber Board

### Board Officers:

Joan Wells, Chair  
**Augeo**

Cindy Rock, Chair-Elect  
**C2FO**

Josh Beck, 1st Vice Chair  
**MarksNelson LLC**

Matt Sogard, 2nd Vice Chair  
**Overland Park Regional Medical Center**

Chris Wally, Treasurer  
**Wally & Co.**

Matt Sheets, Secretary  
**FNBO**

Tony Rupp, Past Chairman  
**Foulston Siefkin LLP**

### Board Members:

Rick Axthelm, **Compass Minerals**

Josh Bitterman, **Goldfish Swim School**

India Boulton, **T-Mobile**

Ken Bowman, **Shamrock Trading Corporation**

Sterling Cramer, **Lambie Custom Homes Inc.**

Dr. Stuart Day, **The University of Kansas  
Edwards Campus**

Dr. Nadine Franz, **APEX Career Services**

David Freisner, **Fortune Financial Advisors**

Tracy Garry, **Empower Retirement**

Hyleme George, **Black & Veatch**

Matt Gunter, **SelectQuote**

Courtney Kounkel, **Monarch Build LLC**

Kristen Leathers-Gratton, **Affinis Corp**

Will Mann, **Zurich North America**

Rich Muller, **VanTrust Real Estate**

Neelima Parasker, **SnapIT Solutions, LLC**

Rick Schier, **CommunityAmerica Credit Union**

Dr. Alan Verrill, **AdventHealth South Overland  
Park**

Christian Weld-Brown, **MBB**

Kim Winslow, **Evergy**

Jason Wright, **JE Dunn Construction Company**

### Ex-Officio Board:

Jim Holland, **Fisher Phillips LLP**

Dr. Michelle Hubbard, **Shawnee Mission  
School District**

Lori Curtis Luther, **City of Overland Park**

Tracey Osborne Oltjen, **CCE, Chamber**

Mayor Curt Skoog, **City of Overland Park**

## Chamber staff

Tracey Osborne Oltjen, CCE, President & CEO

Alex Cook, Director of Events & Member  
Services

David Dyer, Membership Director

Corey Cohn, Economic Development Project  
Coordinator

Frank Ebling, CFO

Katelyn Gravley, Member Services Coordinator

Tim Holverson, IOM, Director, Workforce &  
Business Growth

Stan Lawson, Communications Director

Kevin Walker, IOM, Senior Vice President of  
Public Policy

**Joan Wells**  
2023 Chairman of the Board  
[Augeo](#)



## The opportunity is now!

### MESSAGE FROM OUR CHAIRMAN

**Thank you for your support of the Overland Park Chamber of Commerce. I am honored and excited to serve as your Chairman of the Board in 2023.**

I moved to Overland Park just before high school, got married here, launched a business and grew it for 27 years. That business was acquired by Augeo and I am now the president of the experience division, based in booming downtown Overland Park.

Overland Park has always represented opportunity for me. Living here provides the opportunity to receive a quality education, pursue high growth job opportunities, worship, enjoy beautiful parks and trails and recreation, and partake in numerous cultural opportunities. I was privileged to serve on the steering committee for ForwardOP, a community vision and strategic plan for continued success into the next 20-25 years.

This is a visionary time for Overland Park. Emerging from the pandemic, Chamber

leadership recognized a competitive reality – other communities and regions are aggressively pursuing the same businesses, jobs, talent, and investment we want here. Our community needs to adapt, pivot and embrace boldness.

Out of this need was born Opportunity NOW, a five-year community and economic development initiative that will ensure our competitiveness as a community. Opportunity Now has three actionable goals: attract, retain and align talent; boost job growth and business investment; and enhance a pro-business environment.

The implementation of Opportunity NOW begins in earnest this next year. This means we'll increase our capacity with staff and resources to address your pain points, primarily with the war on talent. And, we'll work every day to ensure that Overland Park and our region are the best places for business investment and quality of life.

Thank you for contributing to this vision for a prosperous future with your support of our Chamber.



# Chamber remembers leader Larry Winn III

Attorney was longtime community and Chamber leader

The Chamber was saddened by the passing of Past Chairman Larry Winn III last month. Larry provided leadership and shared his wisdom and expertise in the Chamber for many years. He served as the Chamber's 2013 Chairman of the Board.

With a lifelong connection to Kansas politics, Larry helped lead and shape the Chamber's public policy efforts, helping to make it one of the most active programs of any chamber in Kansas. In 2012, he and Ben Craig, on behalf of the Overland Park Chamber, intervened in the Kansas redistricting lawsuit to seek fair representation for Johnson County in the Kansas House and Senate.

For more than 40 years, Larry concentrated his law practice on real estate development in Johnson County and he played a large role in its dynamic growth over several decades.

Projects valued at more than \$4 billion can be attributed to his efforts. His projects included work on the original Sprint Campus, two regional malls, more than a dozen neighborhood retail centers, 6,000 multi-family residential units, Menorah Hospital Campus, AMC Theatre at Town Center, regional office facilities, and many other projects. After he retired in 2010, he strategized and collaborated with [BHC](#) customers on development issues.

Professional achievements are only part of Larry's contributions to our community. He was an elected official and served as President of the Shawnee Mission School Board. He also served on the Johnson County Airport Commission, the Committee for Excellence for Shawnee Mission Schools, and the American Lung Association of the Upper Midwest.

Larry chaired or co-chaired a number of campaigns in which Johnson Countians voted to expand programs ranging from parks to schools and from the county library system to correctional facilities.

We are grateful for Larry's lifelong commitment to making Overland Park and Johnson County a better place for today's residents and future generations. We will miss his face at the table where important work is being conducted to make Overland Park prosper.



## Four join Chamber board

We are pleased to welcome these new Chamber Board members in 2023:

Rick Axthelm serves as Chief Public Affairs and Sustainability Officer for [Compass Minerals](#), a global provider of essential minerals. He leads overall public affairs strategy and oversees sustainability improvement efforts. Prior to joining Compass, Rick spent more than 20 years leading teams in public policy and corporate communications roles. Before joining the private sector, he served two consecutive members of Congress. He has served on boards in the non-profit, economic development and industry sectors. Rick is a graduate of the University of Wyoming.



Rick Axthelm

In 2019, Kristen Leathers-Gratton, PE, became president of [Affinis Corp](#), where she started as a project engineer and added project management, business development, and business operations responsibilities. Working mostly for municipal clients, she helps neighborhoods find new life and solve problems that improve quality of life. Kristen was inducted in the Academy of Civil Engineers in 2022 and serves as a board member for the Engineers' Foundation of Kansas and American Council of Engineering Companies – Missouri chapter. She earned her civil engineering degree from Missouri S&T.



Kristen Leathers-Gratton, PE

Rich Muller has been with [VanTrust Real Estate](#) since its inception in 2010 and currently serves as Executive Vice President. His primary responsibilities include identifying, investigating, and managing new development opportunities. Rich is a registered architect who has worked in the design, construction, and real estate industries since 1993. His portfolio includes new headquarters buildings for [Burns & McDonnell](#) and [Creative Planning](#) and redevelopment of the former Meadowbrook Country Club. He holds a Bachelor of Science in Architecture and a Master of Business Administration from the University of Kansas. Rich serves on the [Johnson County Community College](#) Foundation Board of Directors.



Rich Muller

Christian Weld-Brown is a partner at [MBB](#), a full service advertising agency with consumer packaged goods, health care and business-to-business clients. She also is a co-founder of MD MatchUp, a SaaS-based tool that connects patients and providers for better health outcomes. Christian is a graduate of Stephens College and Creighton University School of Law. She is a board member of the [Downtown Overland Park Partnership](#) and the Downtown Overland Park Business Improvement District. She is a 2022 graduate of Leadership Overland Park.



Christian Weld-Brown

# Chamber celebrates Annual Meeting

More than 400 Chamber members came together for the Chamber's 2022 Annual Meeting. Leaders shared achievements of the past year and previewed the year ahead, several individuals were recognized for their service to the community and keynote speaker Joel Goldberg shared lessons from the world of sports about what it takes for an organization to have a winning team.



Gary Nevius, Executive Director of ForwardOP, received the OP Award from 2023 Chairman Joan Wells, [Augeo](#); and Chamber President Tracey Osborne Oltjen.



## Presenting Sponsor



## Silver Sponsors



## Print Sponsor



## Vibe / DJ Partner



## Corporate Table Sponsors



**Above, left:** Joan Wells presents Tony Rupp, [Foulston Siefkin LLP](#), with a plaque for his service as 2022 Chairman of the Board.

**Above:** Tony Rupp, Tracey Osborne Oltjen, Joel Goldberg and Joan Wells.

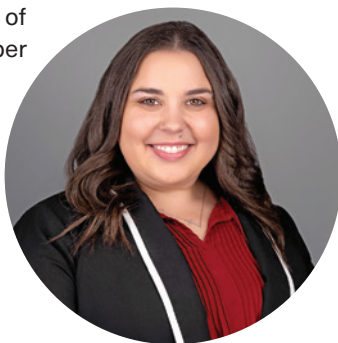
**At left:** 2023 Chairman Joan Wells.



## Chamber promotes Alex Cook

Alex Cook has been promoted to Director of Events & Member Services on the Chamber staff. In her new role, Alex will coordinate signature, leadership, educational and networking events for the Chamber and its Economic Development Council and Foundation and secure sponsorship and attendance necessary to meet goals. She also will coordinate the Leadership Overland Park program.

Alex joined the Chamber staff in July 2021 as Member Services Coordinator. Most recently, she was Executive Assistant.



City Council President Paul Lyons joined the Chamber to help co-owners Caroline Irving and Braden Holcomb and their team celebrate the opening of [BRKTHROUGH](#), 6403 West 135th Street.

Grab your friends and be the first to try the 35+ high-tech game rooms and enjoy a delicious menu of shareable items and beer and wine from local breweries. For more info: (913) 948-5800 or [click here](#).

## Chamber is hiring

The Chamber seeks qualified candidates for the position of Executive Assistant to provide high level project and administrative support for president, senior staff, members and board. Ideal candidate must demonstrate superior verbal and written communication, technical and organizational skills and attention to detail in a fast-paced environment.

For details, [click here](#).



## Upcoming events

### Wednesday Wake-up

**Wednesday, January 11** – 8:00-9:00 a.m.

[Johnson County Rehabilitation Hospital](#), 11325 College Boulevard

At this monthly networking event, make connections, develop lasting business relationships and create new opportunities while discovering how the inspired team at Johnson County Rehabilitation Hospital helps people who have suffered a debilitating disease or injury return to the life they love through comprehensive inpatient medical rehabilitation and exceptional care.

Free for Chamber members.

To register, [click here](#).



SERIES SPONSOR

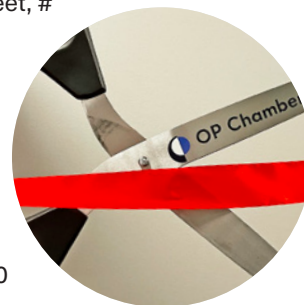


### Ribbon cuttings

**January 18** – Midwest Perinatal Association at [Overland Park Regional Medical Center](#), 12200 West 106th Street, #110 – 4:00 p.m.

**January 19** – [TrueFix Physical Therapy](#), 10561 Barkley Street, Suite 104 – 12:00 p.m.

**February 1** – [Silver Lake Bank](#), 7206 College Boulevard – 11:00 a.m.



### Mark your calendar!

**February 8** – Wednesday Wake-up at [Academy Bank](#), 10000 College Boulevard – 8 a.m.

**February 21** – OP After Hours at [Chicken N Pickle](#), 5901 West 135th Street – 4:30 p.m.

**March 8** – Wednesday Wake-up at [BRKTHROUGH](#), 6403 West 135th Street – 8 a.m.

# Welcome to the Chamber!

## INTRODUCING OUR DECEMBER NEW MEMBERS

### Advanced Dermatologic Surgery

Thomas Hocker, MD,  
CEO / Medical Director  
6901 West 121st Street  
Overland Park KS 66209  
(913) 661-1755  
g.albers@advanceddermsurgery.com  
[www.advanceddermsurgery.com](http://www.advanceddermsurgery.com)  
*Medical Centers*

### Dynamic Spine Institute

Dr. Shawn Herrman, Chiropractor  
13469 Switzer Road  
Overland Park KS 66213  
(913) 296-7070  
office@dynamicspineinst.com  
[www.dynamicspineinst.com](http://www.dynamicspineinst.com)  
*Chiropractic Physicians - D.C.*

### KC Real Estate Guy, LLC

David Roozrokh, Broker-Owner  
Overland Park KS  
(913) 206-3283  
David@KCRealEstateGuy.com  
[www.KCRealEstateGuy.com](http://www.KCRealEstateGuy.com)  
*Real Estate - Residential*

### Moving Proz LLC

Kelli Warren, Owner  
12022 Blue Valley Parkway, Suite 526  
Overland Park KS 66213  
(913) 251-9033  
[www.movingproz.com](http://www.movingproz.com)  
*Movers*

### Nautical Bowls

Dave Rinker, Owner  
11648 West 135th Street  
Overland Park KS 66221  
(913) 732-0416  
overland74@nauticalbowls.com  
[www.nauticalbowls.com](http://www.nauticalbowls.com)  
*Food Service; Restaurants*

### Optum Healthcare

Kelly Mullinax, Regional Outreach  
Representative  
6860 West 115th Street  
Overland Park KS 66211  
(913) 953-2024  
kelly.mullinax@optum.com  
[www.optumkc.com](http://www.optumkc.com)  
*Health Care*

### Security Equipment Inc.

Dominic Orlando, Security Consultant  
1225 Swift Street  
North Kansas City MO 64116  
(816) 905-4770  
KCSales@seisecurity.com  
[www.seisecurity.com](http://www.seisecurity.com)  
*Security Consultants; Security Systems*

### Tech Electronics

Matt Warton, Technology Solutions  
Specialist  
8202 Marshall Drive  
Lenexa KS 66214  
(913) 461-0060  
[www.techelectronics.com](http://www.techelectronics.com)  
*Audio-Visual Equipment & Supplies,  
Security Consultants*

### Walsworth

Allison Schimelpfenig, Corporate  
Recruiter  
7300 West 110th Street, Suite 600  
Overland Park KS 66210  
(913) 871-2059  
[www.walsworth.com](http://www.walsworth.com)  
*Printing; Publishers-Periodicals*

Refer a potential Chamber member to Dave at [ddyer@opchamber.org](mailto:ddyer@opchamber.org)  
and receive a credit when they join the Chamber!

# Thanks for reinvesting!

## DECEMBER MEMBER RENEWALS

### 50+ Years

AdventHealth Shawnee Mission  
Mize CPAs Inc.

### 40-49 Years

INTRUST Bank  
Johnson County Community College  
Wells Fargo Advisors

### 20-39 Years

Baker University  
Corporate Woods  
Fastsigns of Overland Park  
Grandma's Office Catering  
Marriott Kansas City Overland Park  
McCownGordon Construction  
Rosati's Pizza  
Sandler Training

### 10-19 Years

Allied National, Inc.  
Empower Retirement  
McAuley & Crandall, PA

### 5-9 Years

American Cancer Society  
Google Fiber  
Mariner Holdings

Mid American Credit Union  
Nifty Promotions  
The Sovereign at Overland Park  
Westlake Ace Hardware - 151st Street  
Westlake Ace Hardware - 87th Street  
Westlake Ace Hardware - College &  
Quivira

### 1-4 Years

Active Family Chiropractic  
Aspiria  
Chicken N Pickle  
Cowell Insurance Solutions  
Evergreen Concepts LLC  
Harvesters-The Community Food  
Network  
OneRequest, LLC  
WellSky Corporation

Please support these  
companies investing in our  
community by giving them  
your business.



Click advertisement below for details.

# Big believers in small business.

Every small business has its own goals. You need a bank that understands yours and has the solutions to help your business do more.



FREE BUSINESS CHECKING

evergreen<sup>®</sup>  
by fnbo

BUSINESS EDITION<sup>®</sup>



[fnbo.com/smallbusiness](https://fnbo.com/smallbusiness)

Member FDIC



The great big small bank

# 38 selected for 2023 Leadership Overland Park

The Chamber Foundation has selected 38 business professionals to participate in its 2023 Leadership Overland Park (LOP) program.

During ten full-day sessions beginning this month, participants meet local leaders and study aspects of the community including government, history, education, politics and current issues impacting the local community, region and state. Class members graduate in June.

Our 2023 Leadership Overland Park class:

- Rodney Allen, [AdventHealth South Overland Park](#)
- Amber Atha, [Budget Blinds of Overland Park](#)
- Malik Bieberle, [Turner Construction Company](#)
- Brian Biggs, Garmin International
- Kevin Brannan, [Evergy](#)
- Daniel J. Buller, [Foulston Siefkin LLP](#)
- Jennifer Cairns, [The Arts & Recreation Foundation of Overland Park](#)
- Reagan Cussimano, [The University of Kansas Health System](#)
- Derek Dietz, [WaterOne](#)
- Ashley Garcia, [Menorah Medical Center](#)
- Nathan Hladky, HG Consult
- Krista Jackson, [Johnson County Rehabilitation Hospital](#)
- Scott Kautzi, [Fiorella's](#)
- Todd Lanker, New Theatre & Restaurant
- Don Lenahan, [Sheraton Overland Park Hotel](#)
- Megan Lilley, [Olsson](#)
- Blake Lopez-Bierwirth, [Mutual of Omaha](#)
- Greg McGovern, [Black & Veatch](#)
- Evan McMican, [C2FO](#)
- Ryan Miller, [Overland Park Police Department](#)
- Brad Moore, [Overland Park Historical Society](#)
- Charlie Mosher, [BerganKDV](#)
- Harrison Mulvihill, [Empower Retirement](#)
- Elizabeth Ann O'Laughlin, [Augeo](#)
- Courtney Osborn, [First Interstate Bank](#)
- Jennifer Perkins, [Central Bank of the Midwest](#)
- Ben Prell, [Geiger Prell, LLC](#)
- Meg Ralph, [City of Overland Park](#)
- Abby Sandbothe, [HDR Engineering](#)
- Allison Schimelpfenig, [Walsworth](#)
- Amy Sellers, [Johnson County Community College](#)
- Luke Stenzel, [BHC](#)
- Edward (Tyler) Stimac, [Honeywell FM&T, LLC](#)
- Peg Trent, [Johnson County Government](#)
- Amanda Vega-Mavec, El Centro, Inc.
- Stacy Wagner, [Burns & McDonnell Engineering](#)
- Marcus Walker, [JE Dunn Construction Company](#)
- Collin Wheeler, [DLR Group](#)

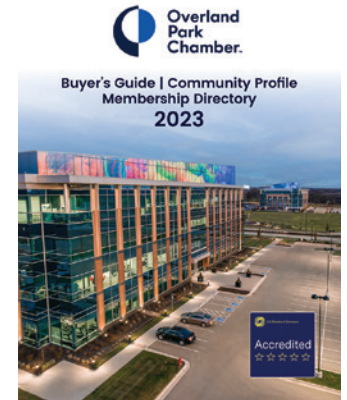
# Directory highlights members and community

Our 2023 Membership Directory will hit mailboxes in January.

The main annual publication of the Chamber, the directory showcases our members and Overland Park's business strengths and quality of life.

Thank you to the following Chamber members for their advertising support of this publication:

- AdventHealth
- Andre's Confiserie Suisse-Andre's Rivaz
- Arcadia of Overland Park
- Ash Grove Cement Company
- Augeo
- Ball Event Center
- Block Real Estate
- C2FO
- Central Bank of the Midwest
- Chick-fil-A Oak Park Plaza
- Clarus Group
- Community National Bank
- Core Bank
- Cosentino's Food Stores
- Dana F. Cole & Company
- DDI - Dean Development
- Fidelity Bank
- First Interstate Bank
- Five Star Painting
- FNBO
- Foulston Siefkin, LLP
- Great Plains SPCA
- Heavy Constructors Association
- Johnson County Funeral Chapel & Memorial Gardens
- Johnson County Library
- Johnson County Museum
- K9 Resorts Luxury Pet Hotel of Overland Park
- Kansas Christian College
- Kids TLC
- MBB
- McCownGordon Construction
- Mia Bella Donna Medspa
- Mize CPAs
- Netsmart Technologies
- Occidental Management
- Office Furniture Kansas City
- Olathe School District
- Panera Bread
- Paths Law Firm
- Price Brothers
- Quality Inn Overland Park
- Residences at Prairiefire Apartments
- Riordan Clinic
- Rosana Square
- Saint Paul School of Theology
- Serendipity Labs
- SnapIT Solutions
- Spencer Fane, LLP
- The Inn at Meadowbrook
- The Joint Chiropractic Overland Park
- The University of Kansas Health System
- Urban Air Adventure Park
- VanTrust Real Estate
- Villages at Lionsgate
- Warehouse Fixtures
- WellSky Corporation
- Whataburger
- Workforce Partnership





## Recent Events

MEMBERS CONNECTING WITH MEMBERS



## Legislative agendas outline Chamber policy

**The Chamber has released its legislative agendas for public policy priorities in 2023.**

Public policy agendas are available for federal, state and local levels. Issues addressed by the agendas include education, energy, economic development, fiscal management, health care, regulations, taxation, technology, transportation and workforce.



You'll find our three agendas under the "Advocacy" tab on the Chamber website at [www.opchamber.org](http://www.opchamber.org).

If you have questions about the Chambers public policy, contact Kevin Walker, Senior Vice President of Public Policy, at [kwalker@opchamber.org](mailto:kwalker@opchamber.org).

## Leads groups offer referral network

**The Chamber has two leads groups that give Chamber member representatives the opportunity for more intensive networking.**

Leads groups meet consistently in a non-competitive and mutually supportive environment to exchange leads and business referrals. Leads groups are a tool for members to cultivate professional relationships, establish trust, increase knowledge and build business. Each leads group has a capacity of up to 25 participants from different industries.



Participation in a Leads Group offers:

- Focused opportunity to create and maintain an effective network;
- Build personal and professional relationships with Chamber members;
- Develop strategies to grow and expand your business.

Leads groups meet in person twice a month. If you would like more information about leads groups, contact Dave Dyer at (913) 766-7604 or [ddyer@opchamber.org](mailto:ddyer@opchamber.org).



## Recent Events

### MEMBERS CONNECTING WITH MEMBERS

Last month, our Young Professionals enjoyed a social mixer at [Bury The Hatchet](#) with delicious food courtesy of [Torchy's Tacos](#).



## HCA helps make Overland Park one of the nation's healthiest communities

### CORPORATE PARTNER SPOTLIGHT

[Menorah Medical Center](#) and [Overland Park Regional Medical Center](#) are part of HCA Midwest Health, Kansas City's largest health care network, consisting of hospitals, physician practices, surgery centers and urgent care centers.

Every day, employees at these premier hospitals live out the mission of the organization: "Above all else, we are committed to the care and improvement of human life."

Through community engagement, servant leadership and a commitment to the highest medical standards, [Menorah Medical Center](#) and [Overland Park Regional Medical Center](#) help make Overland Park one of the healthiest communities in the nation.

Both hospitals are part of the Sarah Cannon Research Institute. Menorah Medical Center is one of the area's premier hospitals that provides the best in care for the community. The Breast Center is a leader in the region. It offers 3D mammography and is accredited by the National Accreditation Program for Breast Centers and is certified by the Mammography Quality Standards Act. The hospital is a Center of Excellence in Colorectal Surgery, Robotic Surgery, Bariatric Surgery and is home to the state-of-the-art Neuroscience and Orthopedic Center. The orthopedic program is Joint Commission

Certified and was recently named a Top 50 US Hospital for Orthopedic Surgery and Knee Replacement as well as a Top 100 US Hospital for Surgical procedures by Healthgrades. The hospital features the latest in robotic technology for physicians to employ when performing complex procedures.

Overland Park Regional Medical Center is home to Johnson County's only Level II Trauma Center; the hospital is also an Accredited Stroke and Chest Pain Center. Overland Park Regional Medical Center is the premier area destination for Women's and Children's healthcare services. It offers the region's only Fetal Health Center to care for critically ill mothers and their babies under one roof. The hospital includes an antepartum unit, a labor and delivery unit, a Level III NICU and a Pediatric Center that offers pediatric specialty care, a dedicated Pediatric ER and pediatric inpatient unit. The HCA Midwest Health Neonatal and Maternal Transport Team – based at Overland Park Regional Medical Center – is prepared 24/7 to safely deliver and care for premature or critically ill infants and care for mothers with high-risk pregnancies via ambulance or helicopter. Overland Park Regional Medical Center has four emergency rooms, including a pediatric emergency room and freestanding ERs in Olathe and Shawnee.

For more information, visit [www.hcamidwest.com](http://www.hcamidwest.com).



## Recent events

### MEMBERS CONNECTING WITH MEMBERS

Last month, Chamber Economic Development Investors enjoyed a social mixer at [Topgolf](#).



Chamber Diplomats enjoyed lunch at [Buffalo State Pizza Co.](#) during their annual holiday party and gift exchange. Diplomats are the Chamber's volunteer arm and help support new members joining the Chamber. If you are interested in becoming a Diplomat volunteer, contact Dave Dyer at (913) 766-7604.

## Mark your calendar!



## EDC Honors Lunch

RECOGNIZING LEADERS IN BUSINESS

**Thursday, February 1 – 11:30 a.m.-1:30 p.m.**

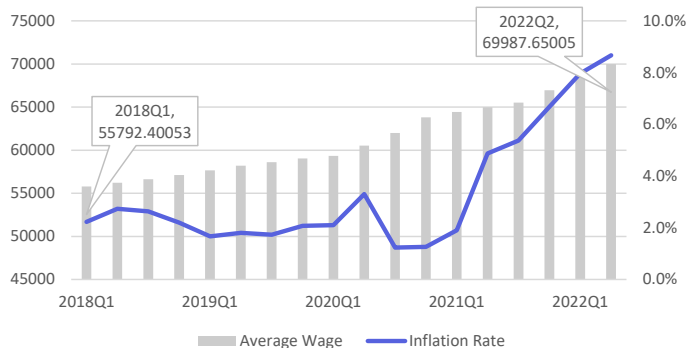
Johnson County Community College

Presenting awards for:

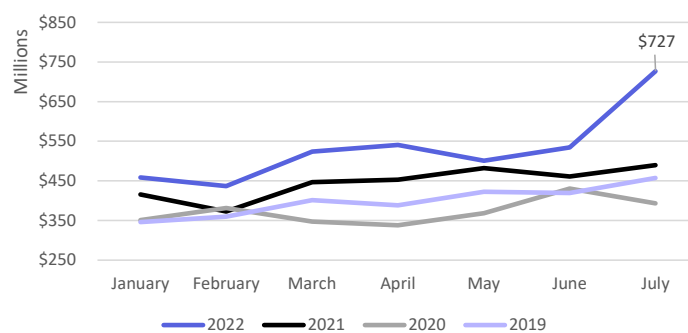
- NOVA Award
- Commercial Development Award
- Business Hall of Honor
- Ben Craig Vision Award

## Driving Economic Success

### Inflation rate vs. average annual wage



### Overland Park Retail Sales Comparisons 2019-2022



July 2022 marks a three-year high in monthly retail sales. With more than \$726 million spent on retail in Overland Park, this indicates a 48.5% increase in retail sales from last year's monthly total (July 2021). To date there has been a 19.3% increase in yearly total retail sales.

Source: Johnson County Economic Indicators, County Research Institute (CERI)

This newsletter is distributed monthly by the Overland Park Chamber of Commerce, 9001 West 110th Street, Suite 150, Overland Park, KS 66210.

(913) 491-3600 | Fax: (913) 491-0393

[opcc@opchamber.org](mailto:opcc@opchamber.org) | [www.opchamber.org](http://www.opchamber.org)



## Corporate Partners



## Corporate Sponsors

[Affinis Corp](#)

[Empower Retirement](#)

[Evergy](#)

[FNBO](#)

[Foulston Siefkin LLP](#)

[JE Dunn Construction Company](#)

[Johnson County Community College](#)

[Kansas Gas Service](#)

[McCownGordon Construction](#)

[The University of Kansas Edwards Campus](#)

To add your name to this list, contact Tracey Osborne Oltjen at (913) 491-3600 or [tosborne@opchamber.org](mailto:tosborne@opchamber.org).



## Chamber offers meeting space

**Many organizations take advantage of the variety of meeting spaces available in the Chamber Foundation Building in Corporate Woods.**

Whether you're planning an event, a training session, or a one-on-one interview, the Foundation Building has the perfect space for you.

Our individual office space is ideal for remote working or when you're wanting to work away from your regular office.

### Meeting Space Options:

**Affinis Collaboration Room** – 1-6 people

**Rau Conference Room** – 4-6 people

**Ben Craig Leadership Center** – 8-12 people

**T-Mobile Board Room** – 20 people

**Black & Veatch Education Center** – 56 people, classroom style

**Sunderland Foundation Terrace** – 100 people

For more information, contact Katelyn at [kgravley@opchamber.org](mailto:kgravley@opchamber.org) or (913) 491-3600.

