

**Oregon State**  
University

COLLEGE OF ENGINEERING  
School of Civil and Construction Engineering

# EMPOWERING THE NEXT GENERATION OF CONSTRUCTION PROFESSIONALS

Robert L. Bertini ✧ March 24, 2022

# At Home in Oregon



Oregon State University  
College of Engineering



# Construction Industry Workforce

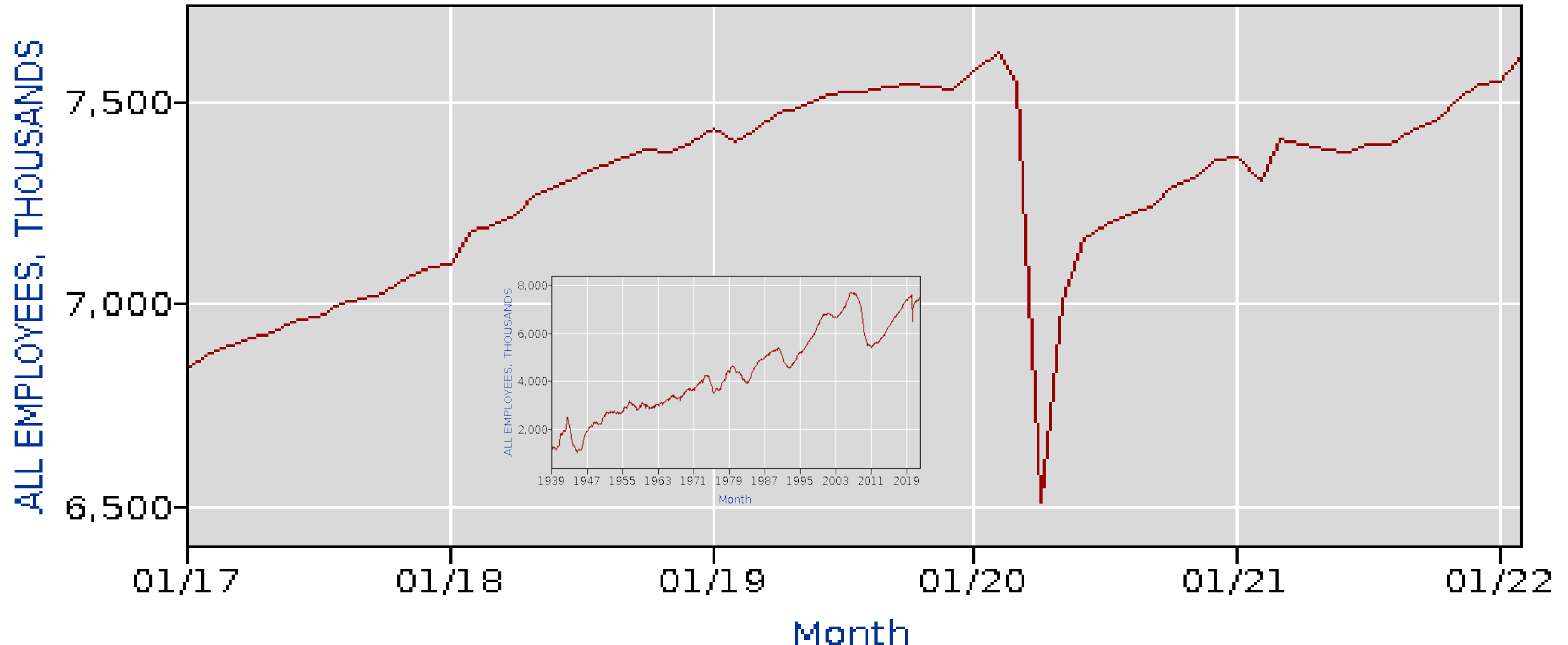
## 7.6 million – February 2022



Oregon State University  
College of Engineering



U.S. BUREAU OF LABOR STATISTICS



# Construction Industry Job Openings

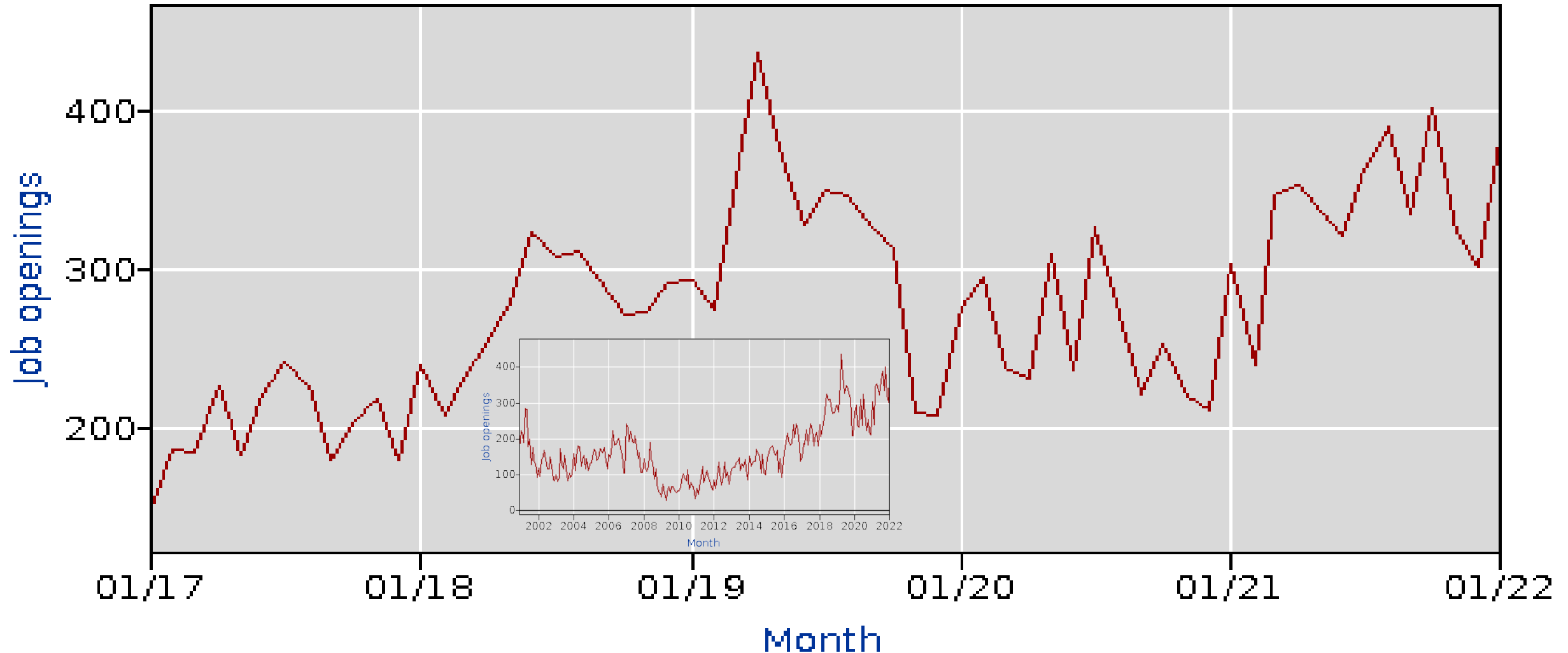
## 384,000 – January 2022



Oregon State University  
College of Engineering



U.S. BUREAU OF LABOR STATISTICS







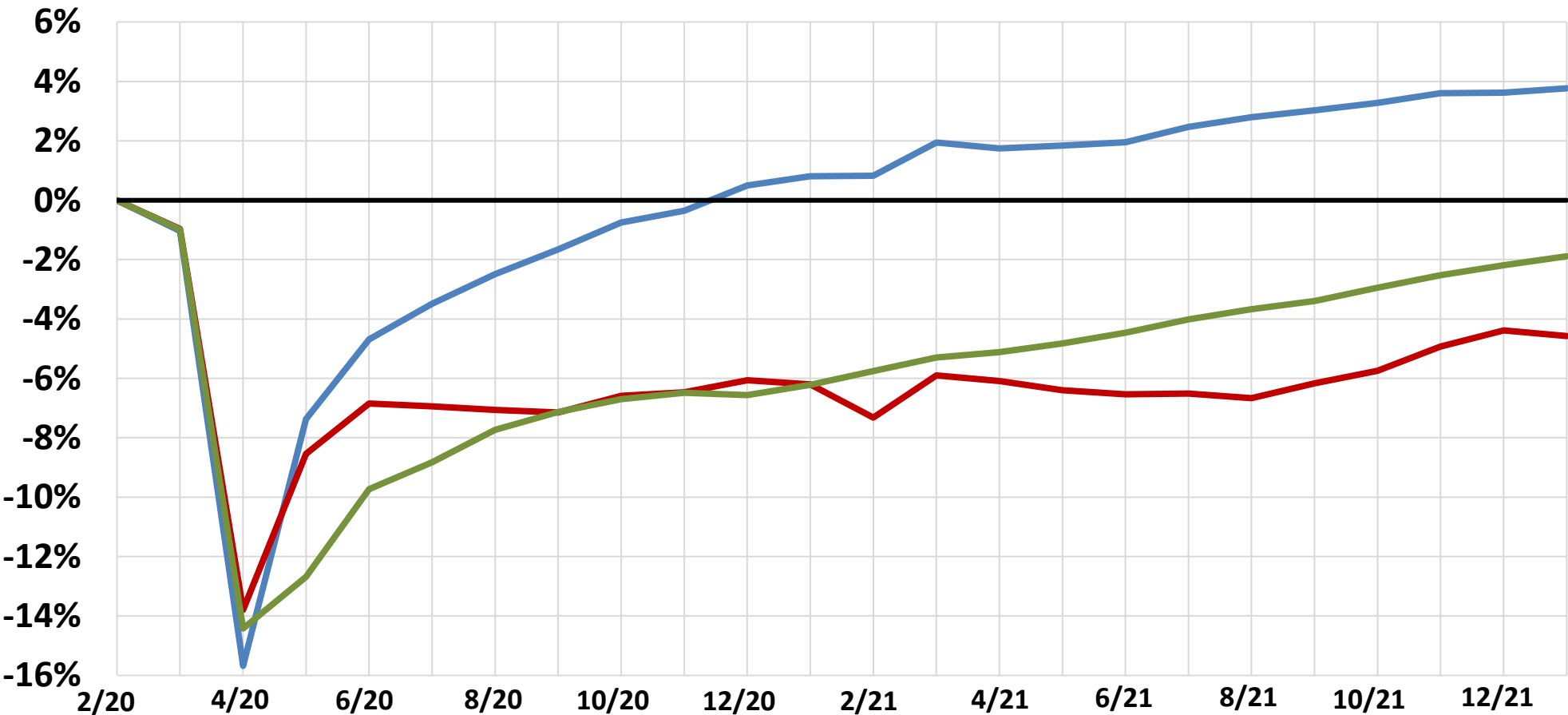
**AGC**  
THE CONSTRUCTION  
ASSOCIATION

Change to 1/22 from:

	<u>2/20</u>	<u>1/21</u>
Residential Construction	3.8%	2.9%

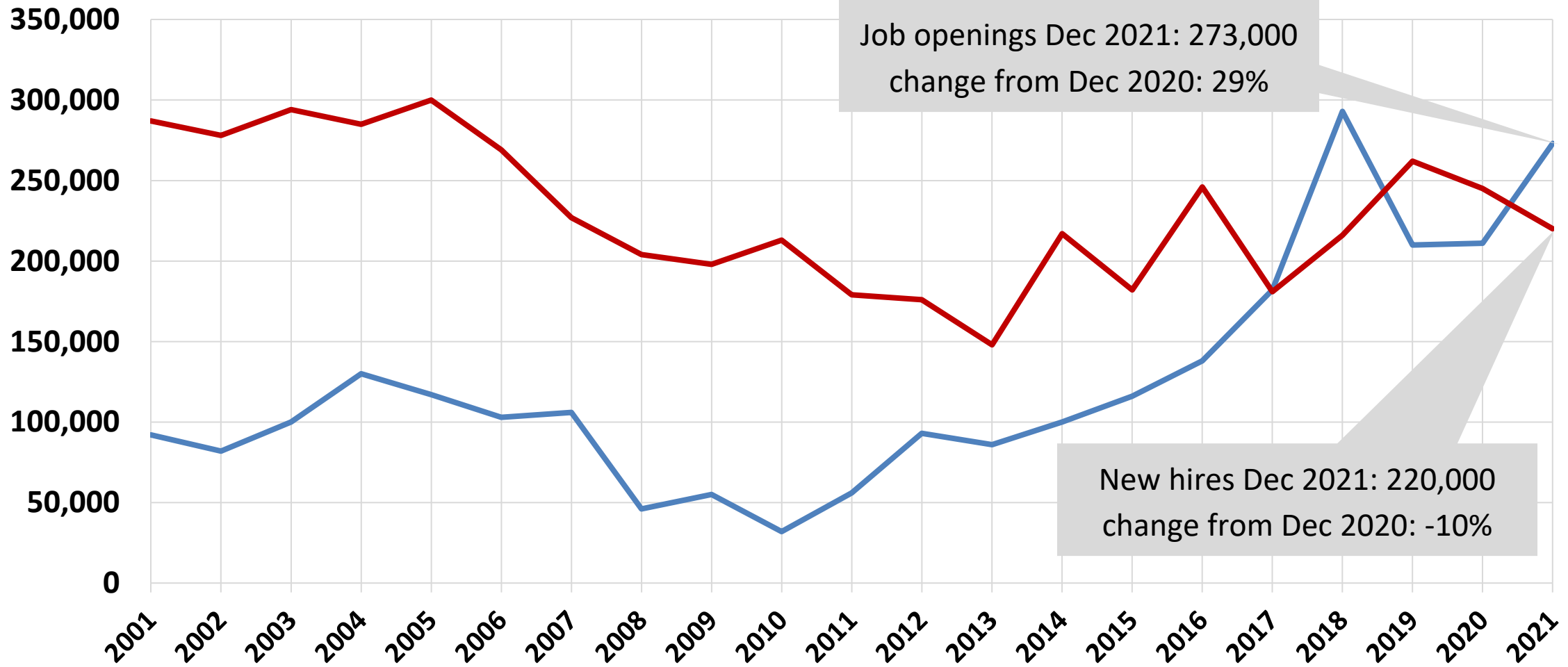
Total Nonfarm	-1.9%	4.6%
---------------	-------	------

Nonresidential Construction	-4.6%	1.7%
-----------------------------	-------	------



# Construction job openings and hires

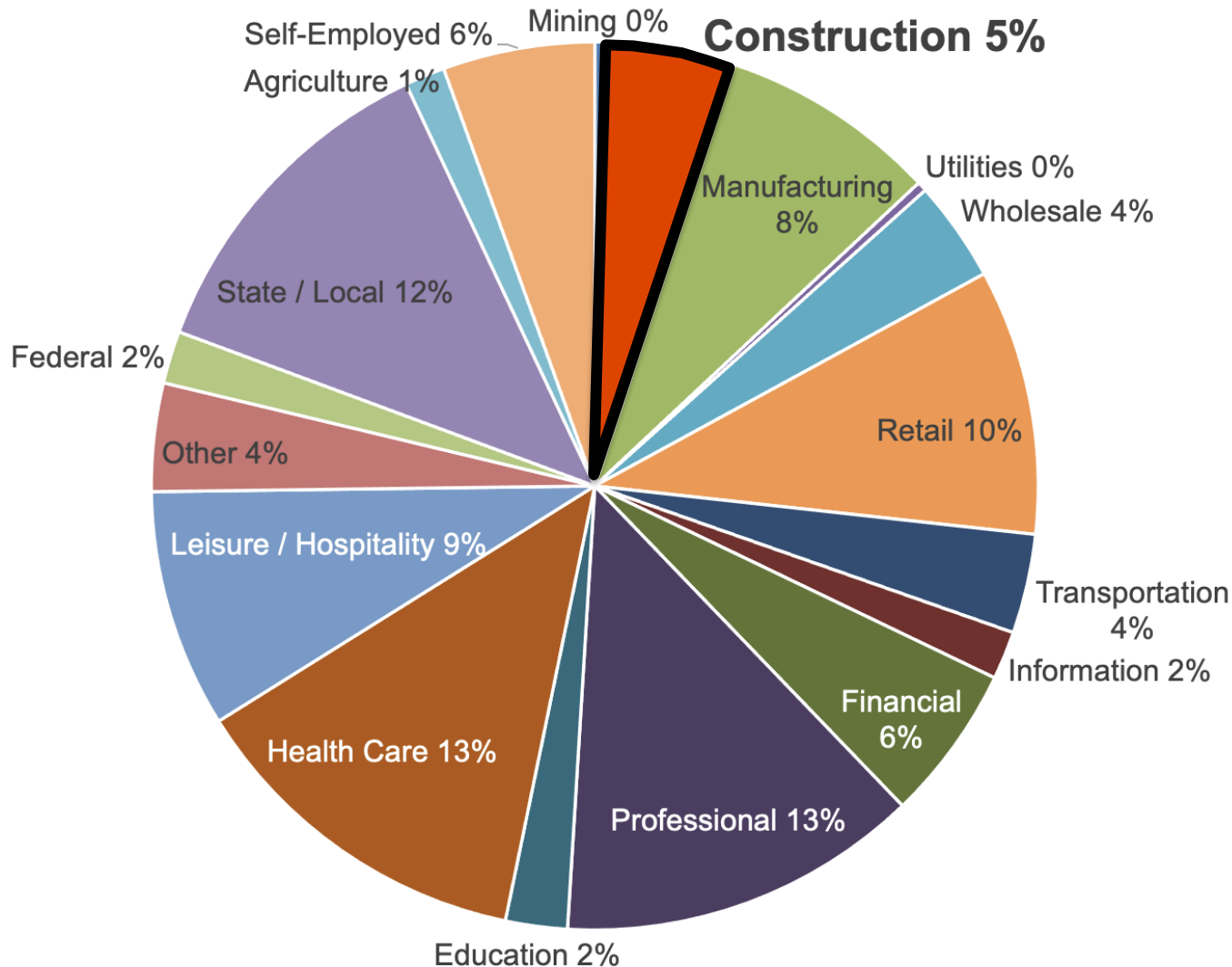
Dec 2001-Dec 2021, not seasonally adjusted



# Construction Industry Importance



Oregon State University  
College of Engineering



- 5% of U.S. Employment (2020)
  - 7.4 million Construction
  - 154 million Total
- 13% of Global Gross Domestic Product
- Strong Career Satisfaction and Growth
- Job Security and Benefits



# ON A MISSION





A top 1% university in the world.



More research funding than any university in Oregon.



1 of 2 land, sea, space and sun grant universities in the U.S.



**33,000**  
students total

**17,508**  
students from Oregon



**11,958**  
students from 49 U.S. states



**2,846**  
students from around the world

**Campus  
commitment to  
inclusivity and  
social justice**

**#10**

Largest Engineering  
Program in the U.S.



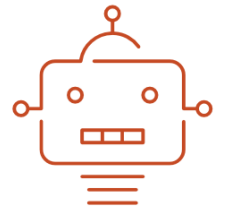
#2 Forestry Program  
in the World



#3 Oceanography Program  
in the World



#4 Best Online Programs  
in the U.S.



#5 Robotics Engineering School  
in the U.S.

**1868**

University founded



#10 Best Big Data Degree  
in the U.S.



#2 Friendliest College Town  
in America



#1 Most Innovative  
in the PNW



Gold Rating for  
Bike Friendliness

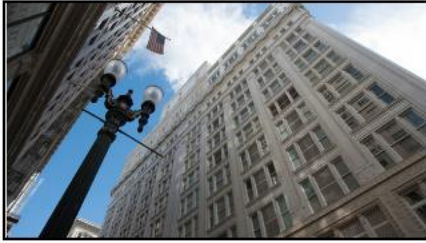




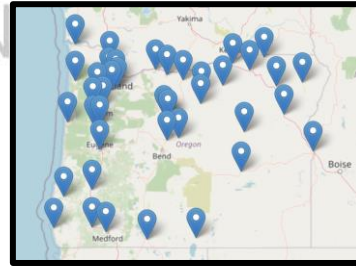
LAND | SPACE

SEA | SUN  
*and rain*





**PORTLAND** (85mi.)



**EXTENSION** (41 locations in 36 counties)



**SALEM** (37mi.)



**NEWPORT** (50mi.)



**CORVALLIS**



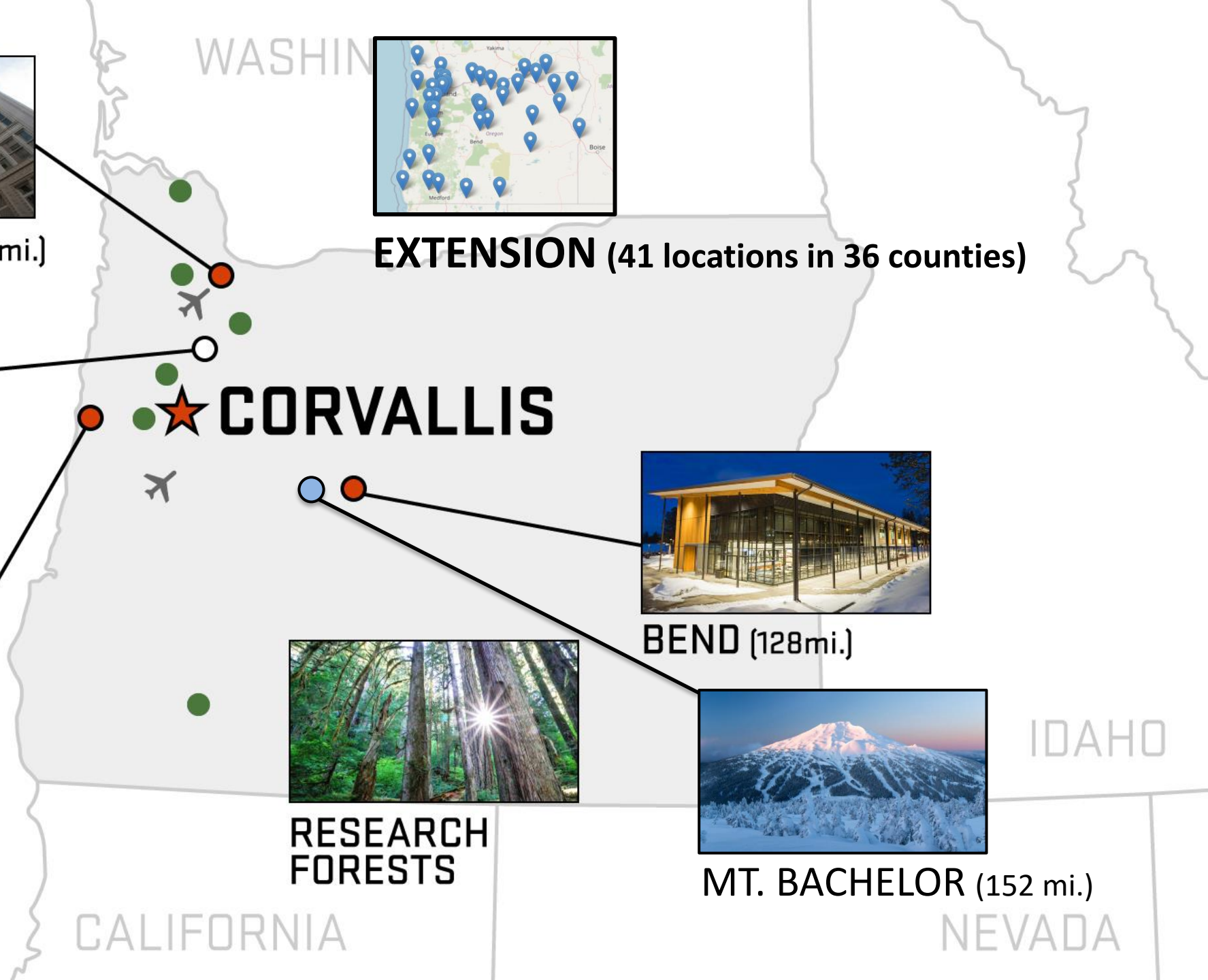
**BEND** (128mi.)



**RESEARCH  
FORESTS**



**MT. BACHELOR** (152 mi.)



# How Are We Organized?



**Oregon State University**  
**College of Engineering**



School of Chemical, Biological, and Environmental Engineering

School of Civil and Construction Engineering

- Civil Engineering
- Construction Engineering Management
- Architectural Engineering

School of Electrical Engineering and Computer Science

School of Mechanical, Industrial, and Manufacturing Engineering

School of Nuclear Science and Engineering

Humanitarian Engineering (minor)

Biological and Ecological Engineering

Forest Engineering





**WE ARE  
OREGON STATE  
ENGINEERING**



# Our Mission

## School of Civil and Construction Engineering



Oregon State University  
College of Engineering

### MISSION

In an inclusive and collaborative environment, we: conduct interdisciplinary research toward a safe, resilient, and sustainable world; educate socially responsible engineers and construction managers for work in industry and academia and for lifelong learning; and support professional partnerships, outreach, dissemination, and community service.



### DIVERSITY, EQUITY, & INCLUSION

Oregon State University's School of Civil and Construction Engineering is committed to taking actions to make our community and engineering professions more inclusive and just. We listen to, engage, and encourage people so that everybody belongs.



### LAND ACKNOWLEDGMENT

Let it be acknowledged that Oregon State University in Corvallis, Oregon is located within the traditional homelands of the Mary's River or Ampinefu Band of Kalapuya. Following the Willamette Valley Treaty of 1855 (Kalapuya etc. Treaty), Kalapuya people were forcibly removed to reservations in Western Oregon. Today, living descendants of these people are a part of the Confederated Tribes of Grand Ronde Community of Oregon and the Confederated Tribes of the Siletz Indians.

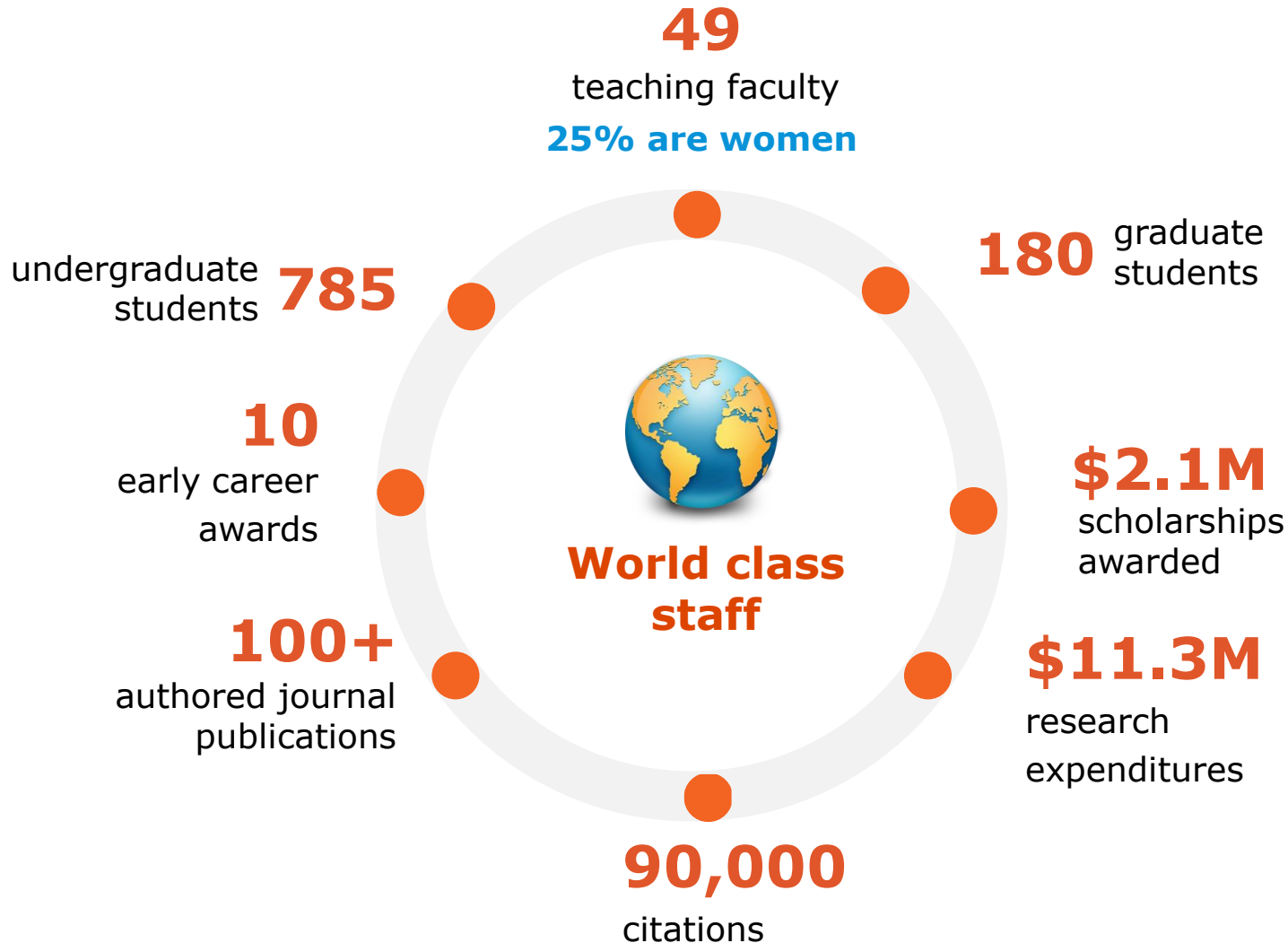


### HONOR CODE

Students, faculty, staff, and alumni will maintain the highest standards of honesty and integrity; strive for these standards in all representations, academic pursuits, research and scholarly activity; respect the property and individual rights of others; uphold the specific principles described in the Honor Code; and actively support the Code.

# By the Numbers

## School of Civil and Construction Engineering



# 10<sup>TH</sup>

LARGEST COLLEGE  
OF ENGINEERING  
(UNDERGRADUATE  
ENROLLMENT)

DEGREES  
AWARDED

# 2045

# 60

STUDENT  
CLUBS AND  
ORGANIZATIONS

LEADERSHIP  
ACADEMY  
STUDENTS

# 490

# 26

CAREER/YOUNG  
INVESTIGATOR  
AWARDEES

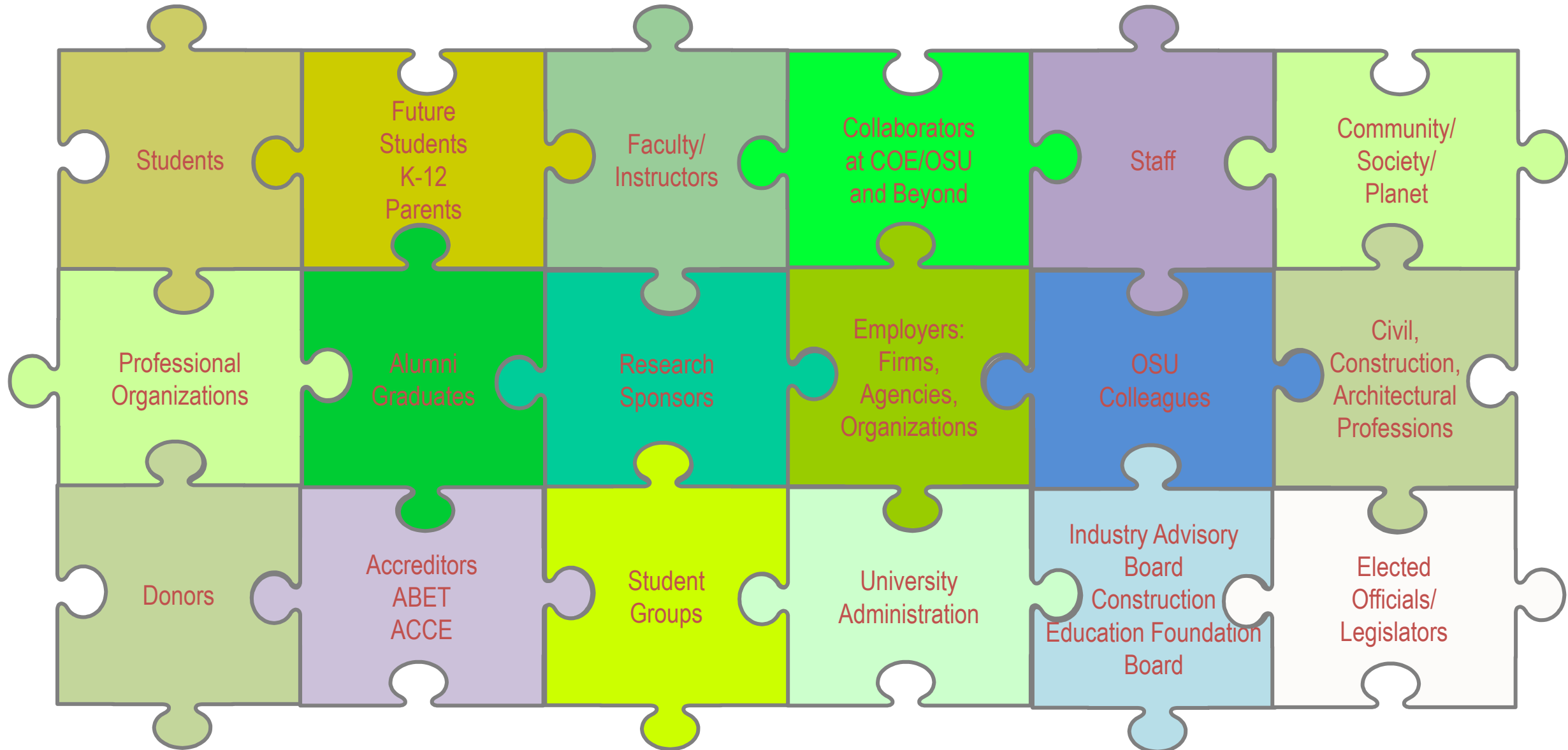
# No. 3

PUBLIC R1  
UNIVERSITIES FOR  
THE PERCENTAGE OF  
FACULTY WHO  
ARE WOMEN

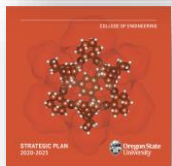
# Sense of “Ownership” by Stakeholders



Oregon State University  
College of Engineering

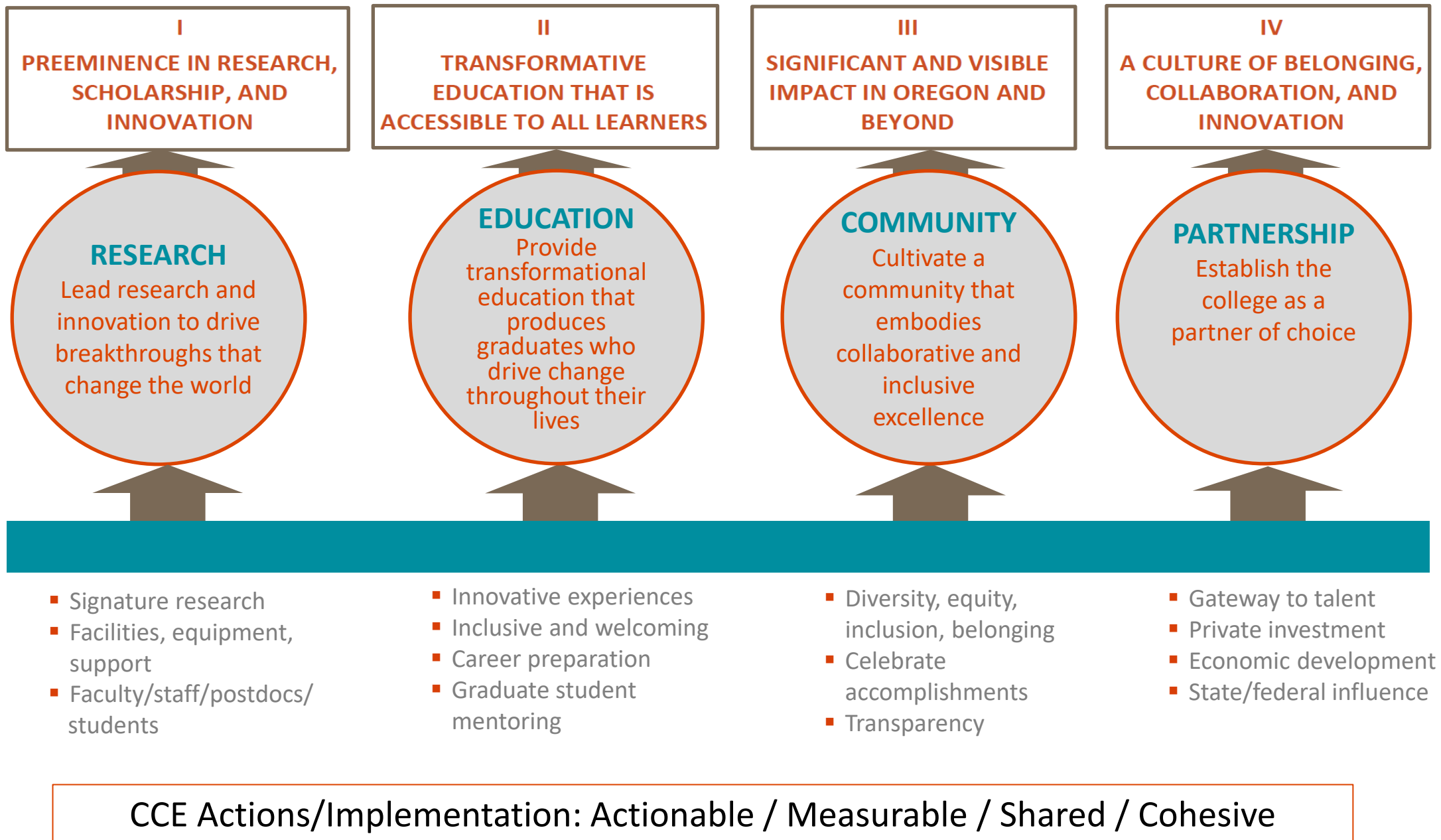






Create a  
better  
future

School of Civil and  
Construction Engineering  
Advancing Knowledge in the  
Built Environment



# By the Numbers

## School of Civil and Construction Engineering



Oregon State University  
College of Engineering

### Seven Degree Programs

12 BS credits → MS  
Add one year

**BS**

Architectural  
Engineering

**BS**

Civil  
Engineering

**BS**

Construction  
Engineering  
Management

**Accelerated  
Master's  
Platform**

Civil  
Engineering

**MS**

Civil  
Engineering

**MEng**

Civil  
Engineering

**PhD**

Civil  
Engineering

Honors  
in BS  
programs

Internships  
CECOP  
FE Exam

### Graduate Specializations

- Architectural Engineering
- Coastal & Ocean
- Construction
- Engineering Education
- Geomatics
- Geotechnical
- Infrastructure Materials
- Structural
- Transportation
- Water Resources

Strong  
Industry  
Engagement



Dual **BS** Civil and  
Forest Engineering



Minor in Humanitarian  
Engineering



Students who take 16 cr Land Surveying  
and Surveying Law eligible for FS Exam

# Industry Support From Beginning



Oregon State University  
College of Engineering

1969 Daily Barometer

## Contracting Chapter Receives Charter

Oregon State University chapter of Associated General Contractors of America has received a national charter. The charter followed one year of successful operation by the Oregon State chapter.

The chapter, one of 12 in the nation, was presented by W. R. Rogers of Rogers Construction Company in Portland during a banquet at the Corvallis Country Club last week. Attending the banquet were 66 chapter members, 22 advisors and general contractors.

The AGC of America prepares college graduates for the contracting field and aids them throughout their career. Rogers told the student members they should follow the AGC theme of "Skill, Responsibility and Integrity" in order to uphold their goal of being good contractors. He also stated if they follow this theme, they can't go wrong.

Oregon State now has two degrees which will prepare students for the contracting field. Students can earn a bachelor of science degree in Civil Engineering Technology



PRESENTING THE AGC Student Chapter its charter to chapter President Walt Gamble, is W. R. Rogers of Rogers Construction Company of Portland. At left is John Salisbury, guest speaker, of television and radio fame. On the right is Hal Pritchard, associate professor of Civil Engineering.

specializing in either design or building from design. Undergraduates gain their practical experience during summer working for general contractors.

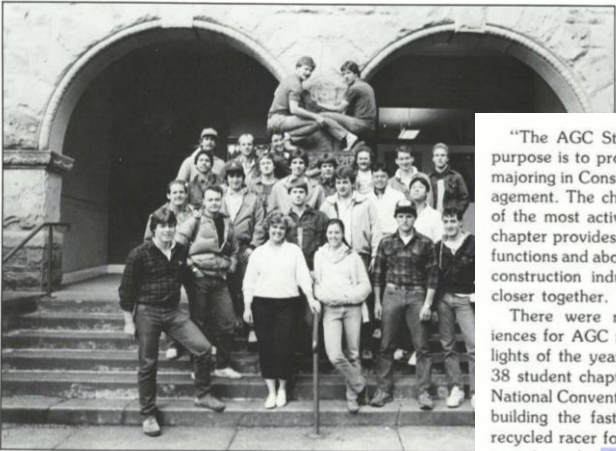
Advisors for the OSU Student Chapter of AGC are Fred Burgess, chairman, Department of Civil Engineering; Hal Pritchard,

associate professor of Civil Engineering; George LaBau, associate professor of Production Technology; and Bob Phelps, assistant professor of Civil Engineering.

Student officers are president, Walt Gamble; vice president, Arnie Anderson; secretary, Joe Chapin; and treasurer, Bill Pike.



ASSOCIATED GENERAL CONTRACTORS



1985  
The Beaver

"The AGC Student Chapter's primary purpose is to provide services to students majoring in Construction Engineering Management. The chapter is proud to be one of the most active clubs on campus. The chapter provides academic services, social functions and above all else, helps bring the construction industry and CEM students closer together.

There were many memorable experiences for AGC members this year. Highlights of the year included: attendance of 38 student chapter members at the AGC National Convention held in San Francisco; building the fastest and best engineered recycled racer for Esprey day and hosting our Annual "Contractor Night" where George Labuan, a retiring CEM professor, was honored for his many contributions to the OSU construction program."

— Craig Smelter, president

1970 The Beaver

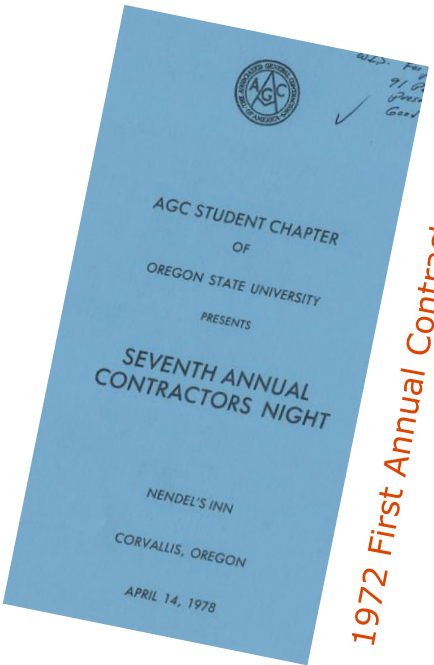


ASSOCIATED  
GENERAL  
CONTRACTORS  
OF AMERICA

A newly chartered club, this organization was formed for the advancement of student interest in construction.



1974 Third Annual Contractors Night



1972 First Annual Contractors Night



CONSTRUCTION  
ENGINEERING  
MANAGEMENT



Harold D. "Hal" Pritchett, Robert E. "Bob" Phelps, and George B. LaBaun  
circa 1974







# CEM@50



Oregon State University  
College of Engineering



**CONSTRUCTION  
ENGINEERING MANAGEMENT**  
**OREGON STATE UNIVERSITY**

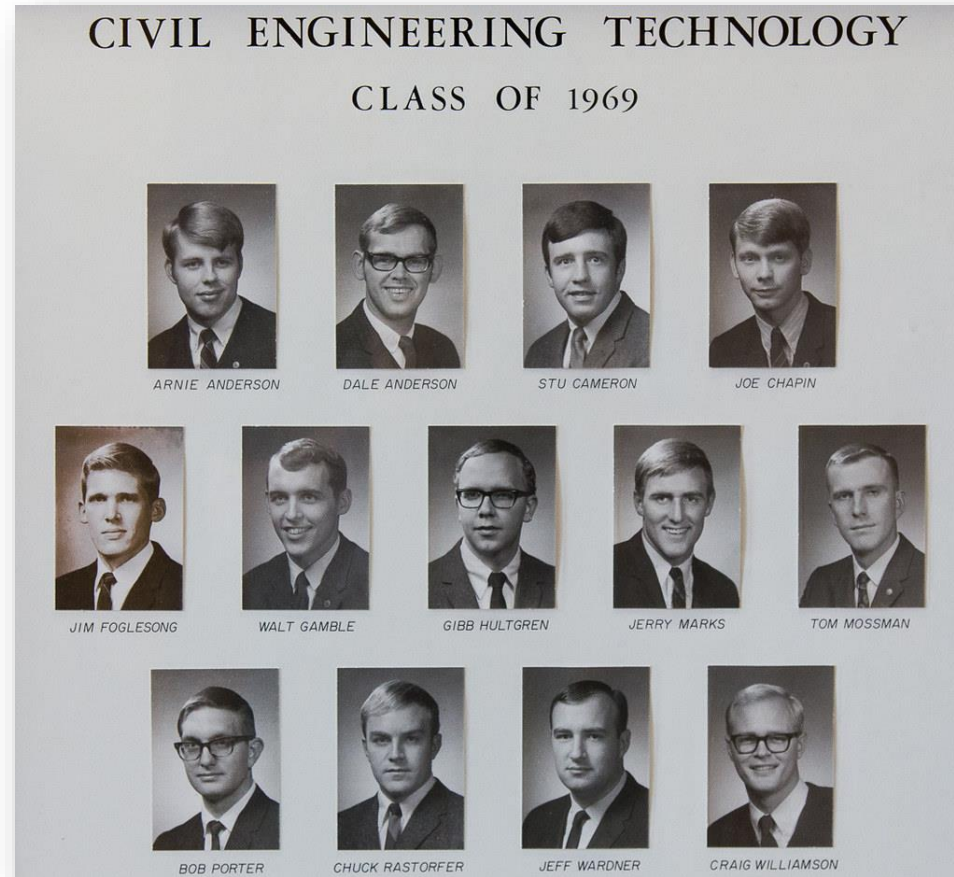




# Then...



**Civil Engineering  
1909**



**Construction Engineering Management  
1969**



**Oregon State University**  
College of Engineering



COLLEGE OF ENGINEERING  
School of Civil and Construction Engineering

**ARCHITECTURAL ENGINEERING  
CLASS OF 2021**



**Oregon State  
University**



**Architectural Engineering  
2021**



# Now...Congrats Class of 2022!



Oregon State University  
College of Engineering



COLLEGE OF ENGINEERING  
School of Civil and Construction Engineering

**CIVIL ENGINEERING**  
CLASS OF 2022



Oregon State  
University



DIAMOND ALTMAN BRAD ARSEN GIOVANI ARMENTA TRISTEN BATEMAN BRANDON CASTANEDA ISAAC COLTON ZACH CRAWFORD STEVEN DWYER GUSTAVO FRANCO CATHERINE HANCOCK



KYLE HUMPHREYS JAKOB KAPPUS KYLE KIRSCH



JASON MENDEZ ALFONSO NUÑEZ GUZMAN JORGE OLIVERA



KORINA PERKINS WADE PICKERING DRAKE POMPERMAYER



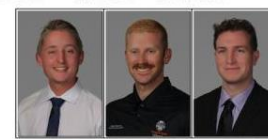
MADLEINE ROZANSKY KOBIE SANDERS MATNEY SEARCY TAUSHIA SMITH JAKE THERROW CHIANG TONG MICHAELA TYLER THOMAS VERZANI

COLLEGE OF ENGINEERING  
School of Civil and Construction Engineering

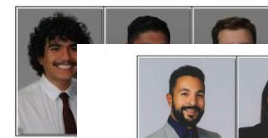
**CONSTRUCTION  
ENGINEERING MANAGEMENT**  
CLASS OF 2022



Oregon State  
University



THEODORE KURN HUNTER LUNDWARK NICK MCCOY



BRYAN OLIVER



WILLIAM PHELPS



JUAN CARLOS AGUILA MADISON COFFEY AUDREY COLLINS RYAN ECCLES ANDREW GARCIA JACOB GRADWOHL



HALEY IVerson



SPENCER RIME



KEI KUSAKABE



DANNY RAY



COLLIN WOOTY



ALYIA ORMANOVA



JESSE PITMAN



ALEXANDRA SACCENTE



CAREY BEVERIS

COLLEGE OF ENGINEERING  
School of Civil and Construction Engineering

**ARCHITECTURAL ENGINEERING**  
CLASS OF 2022



Oregon State  
University



CHARITY KAHAI



YUKI KONO

# Civil / Construction / Architectural Graduates June 2021



Oregon State University  
College of Engineering

155

STUDENTS GRADUATED SPRING 2021

119

SURVEY RESPONSES (77%)

>85%

STUDENTS PLACED

61% CE/CEM/ARE

EMPLOYED IN CONSTRUCTION INDUSTRY

77%

ONE OR MORE INTERNSHIPS (47%  $\geq$  2)

59%

ONE OR MORE STUDENT CLUB







# Construction Engineering Management

## Graduates June 2021



Oregon State University  
College of Engineering

66

STUDENTS GRADUATED SPRING 2021

51

SURVEY RESPONSES (77%)

>86%

STUDENTS PLACED

\$65,000

MEDIAN BASE SALARY

\$55,000

MEAN BASE SALARY

\$88,000

MAXIMUM BASE SALARY

88%

COMMERCIAL CONTRACTOR EMPLOYER TYPE

89%

ONE OR MORE INTERNSHIPS (70% ≥ 2)

58%

ONE OR MORE STUDENT CLUB

# CEM Core Values



Oregon State University  
College of Engineering

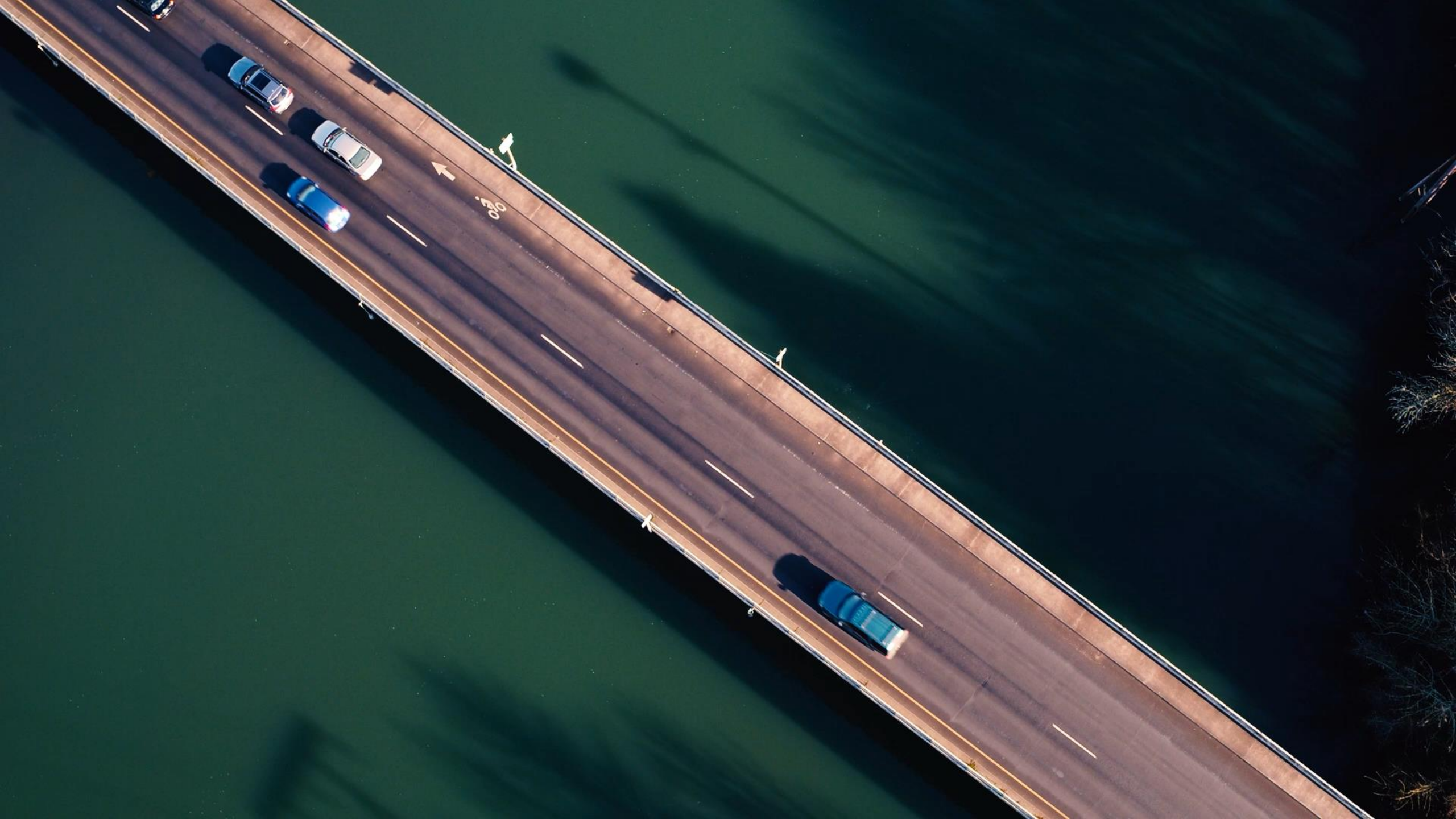


- **Respect:** Value cultural, intellectual, personality and circumstantial differences. Demonstrate respect and be inclusive of others. Freely and willingly collaborate to better understand and learn from alternative views and beliefs. Allow others safety and freedom to pursue their individual goals without interference, disruption or distraction.
- **Integrity:** Establish integrity as a way of life. Adhere to strong ethical behavior. Utilize fairness as standard for creating relationships. Be honest in your commitments. Comply with the spirit and letter of agreements and contracts.
- **Responsibility:** Demonstrate personal responsibility in agreements, duties, and relationships. Assure safe and inspiring place of study/work for all. Exhibit fiscal responsibility. Be accountable for your learning and actions toward others.
- **Learning:** Actively acquire knowledge through academic programs and in practice. Strive for balance of knowledge in all fields. Expand knowledge through research and dissemination. Recognize importance of lifelong learning.
- **Skill:** Utilize the best skill level for providing solutions and services. Strive to improve your skills through learning and application to industry. Share your acquired skills freely with others. Display professionalism in everything you produce.

# Inspiring Construction Faculty and Staff







# Faculty Recognition



Oregon State University  
College of Engineering

## ENR 2022 TOP YOUNG PROFESSIONALS



**Joseph Louis**

35, Assistant Professor and RC Wilson Faculty Scholar

**Teacher furthers innovations**

**Oregon State University**

Corvallis, Ore.

Louis is an assistant professor of construction engineering in the School of Civil and Construction Engineering at Oregon State University, where he leads the simulation, automation and monitoring of construction operations lab that focuses on transforming the construction industry through technological innovations.

His industry experience includes working as a project engineer and software developer. At Oregon State, he teaches heavy civil construction management, construction estimating, project risk management and simulation and visualization of construction operations.

Louis also helps curious high school students enter the construction industry through educational and training initiatives. Louis also conducts workshops using an augmented reality sandbox he built to engage high school students in problems relating to building and maintaining infrastructure.

## ENR Engineering News-Record



**John A. Gambatese**

Engineering Professor Asking Why Known Jobsite Hazards Can't Be Removed

[Click here to read more about John A. Gambatese](#)



# Faculty Recognition



Oregon State University  
College of Engineering

## Catarina Pestana

- Dennis Marker Teacher of the Year
- Pursuing AGC/OSU/CCE Industry residence initiative @Reser Stadium for Summer 2022
- Developing new ECampus course



## Yelda Turkan

- Promoted to associate professor with tenure
- NSF Convergence Accelerator: Rapid Development of Intelligent, Built Environment Geo-Databases Using AI and Data-Driven Models







**Parichehr  
Salimifard**

Assistant Professor  
Architectural Engineering



**Clotilde  
Pierson**

Assistant Professor  
Architectural Engineering

**CCE New Faculty 2021-22**



**Samuel  
Rivera**

Assistant Professor  
Clean Water  
Infrastructure



**Pavan  
Akula**

Assistant Professor  
Infrastructure Materials/  
Geotechnical

- **Attract**
- **Recruit**
- **Diverse**
- **Support**
- **Retain**
- **Completion**
- **Engage**
- **Experiential**
- **Hands On**
- **Empower**
- **Leadership**
- **Communication**

A young woman with long brown hair, wearing a white and black checkered shirt, is smiling and holding a large orange folder. She is standing in front of a man whose back is to the camera. The man is wearing a grey Adidas polo shirt and has glasses on his head. They are in a busy trade show or exhibition hall with other people and displays in the background. The text "Next Generation of Construction Professionals" is overlaid on the right side of the image.

**Next  
Generation of  
Construction  
Professionals**



# Scholarships 2021-22



Oregon State University  
College of Engineering

- Scholarships for recruiting, retention, completion, emergency
- Awarded 25 emergency scholarships winter 2022
- Scholarships based on need, merit, first-generation students, activities
- Total scholarship funds awarded to CCE students: **\$1.23 M**
- CCE scholarship funds awarded: **\$430,531** [+60% since 2018]
- CCE scholarships awarded: **174** [+61% since 2018]
- CCE students receiving scholarships: **213** [includes renewed college awards]
- CCE Students Applying for Scholarships: **186** [24%]
- Percent of applicants awarded: **94%**

# CCE First Year Cohorts



Oregon State University  
College of Engineering

- 18 cohorts / 15 faculty / 20 peers / 76 first year students
- Range of valuable activities and interactions
- Prizes and awards
- Engagement / retention / orientation

## Engineering +

- Three course sequence across engineering majors
- Interdisciplinary / collaborative / inclusive / team / hands-on
- Global development challenges, access to power and energy infrastructure, diversity and inclusivity in the engineering workforce, and environmental justice

## Capstone Design

- 116 students / 25 teams / 4 projects / 2 faculty / 3 GTAs
- 15 Capstone Advisory Panel members / 12 guest lecturers
- 2 quarters/20 weeks







# Construction Industry Partner Program



Oregon State University  
College of Engineering



Oregon State University  
Foundation



<https://beav.es/3E4>



# Emphasis on Communications



Oregon State University  
College of Engineering

- Hired Technical Writing Evaluator to support writing intensive courses (WIC)
- Capstone design courses
- CE 418 Structural Theory I and CEM 443 Project Management for Construction

## Safety Culture

- New safety pledge, emphasis on lab safety/training and Honor Code
- New safety vests and hats courtesy of Coral Sales
- Hardhat replacement plans
- Bike light partnership with OSU PD and transportation



**SAFETY PLEDGE**

As a student,  
I **acknowledge** and **accept** that ensuring safety of my co-workers, classmates and myself in the School of Civil and Construction Engineering is a personal moral and ethical obligation and a collective core value of Oregon State University.

I **commit** myself to placing the safety and health of my co-workers, classmates, and myself paramount in all that I do and in all of my decisions.

I **promise** to learn about and work towards protecting the health and safety of the public by following all safety instructions or training provided by Oregon State University.

I **promise** that I will never compromise the safety of my co-workers, classmates, and myself to meet other priorities such as getting the work completed, saving time, or minimizing cost.

As a student of the School of Civil and Construction Engineering, I, both personally and on behalf of our school and the university, pledge to uphold the values, beliefs, and commitments described herein in the course of my work and the work that we do in our school and the university.

Names: \_\_\_\_\_ Student IDs: \_\_\_\_\_  
Signature: \_\_\_\_\_ Date: \_\_\_\_\_

SCHOOL OF CIVIL AND CONSTRUCTION ENGINEERING

Oregon State University



# Experiential Learning

- **Student Clubs**

- 20+ Student Organizations
- Competitions (Steel Bridge / Concrete Canoe)

- **Speaker Meetings**

- About 60 per year
- Free dinner
- Interact with industry leaders

- **Research Experiences**

- Work with faculty and graduate students
- Learn about graduate school opportunities
- Honors College thesis possibilities

- **Career Fairs Fall/Winter**

- CCE-specific
- 50-100 employers
- Handshake

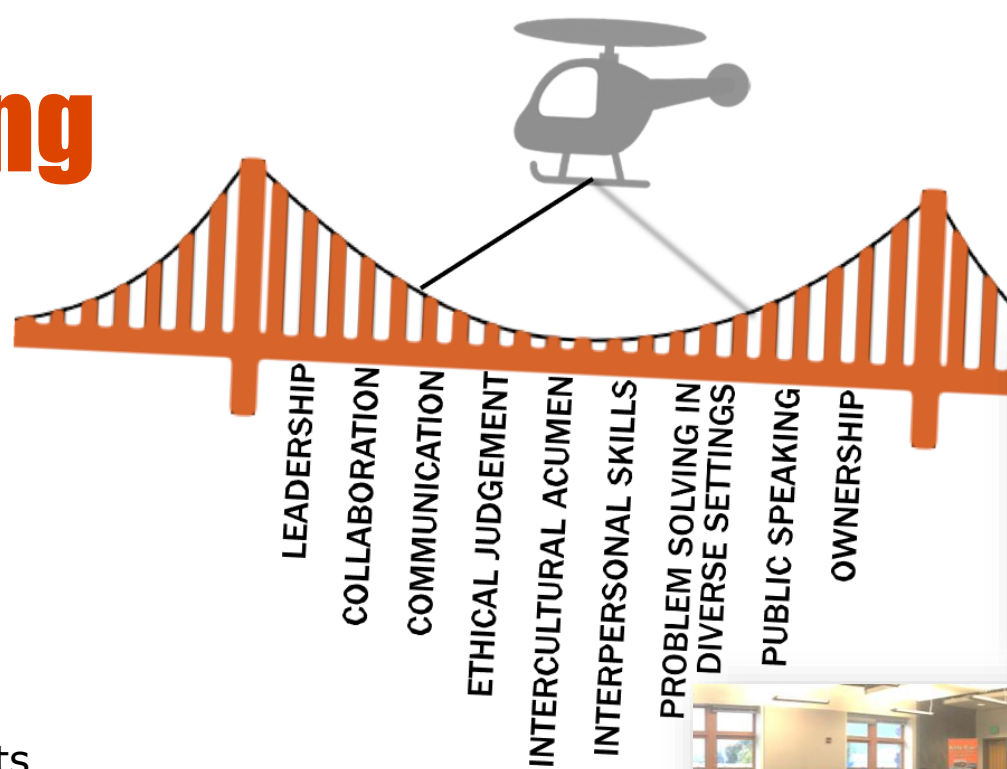
- **Internships**

- **Field Trips**

- **Study Abroad**

- **Golf Tournaments** (CEF + AGC)

- **Contractors Night**



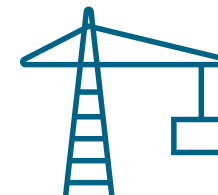




# ASC COMPETITION

## What is it?

The ASC Competition is a 2-day competition that provides 100+ student teams from universities across the nation with valuable hands-on experiences in developing and presenting project proposals to a group of practicing professionals in the construction industry.



### Hands-On Experience

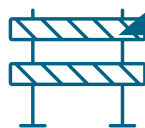
- Scheduling
- Estimating
- Site Logistics
- Construction Contracts
- Reading Plans & Specs
- Sub-Bid Evaluation
- Value Engineering
- RFP Process
- And More!



### Largest Construction Job Fair in the U.S.

- 100+ Companies
- Networking Experiences
- Meet Potential Employers

## Where?



**1000+ Students**  
Competing  
Every Year!

**OSU  
FACULTY  
COACH**  
Dr. David Trejo



## When?

Early February, every year!  
OSU Teams + Industry  
Coaches meet Fall thru  
Winter term.



[www.asc67.org](http://www.asc67.org)

Represent OSU!

SCAN TO LEARN MORE!

## Why Should Students Join?



# 2021-2022 COMPETING TEAMS



PROJECT MANAGEMENT



ELECTRICAL



MECHANICAL



MIXED USE



COMMERCIAL



VDC



HEAVY CIVIL



CONCRETE SOLUTIONS



# TEAM SPONSORS

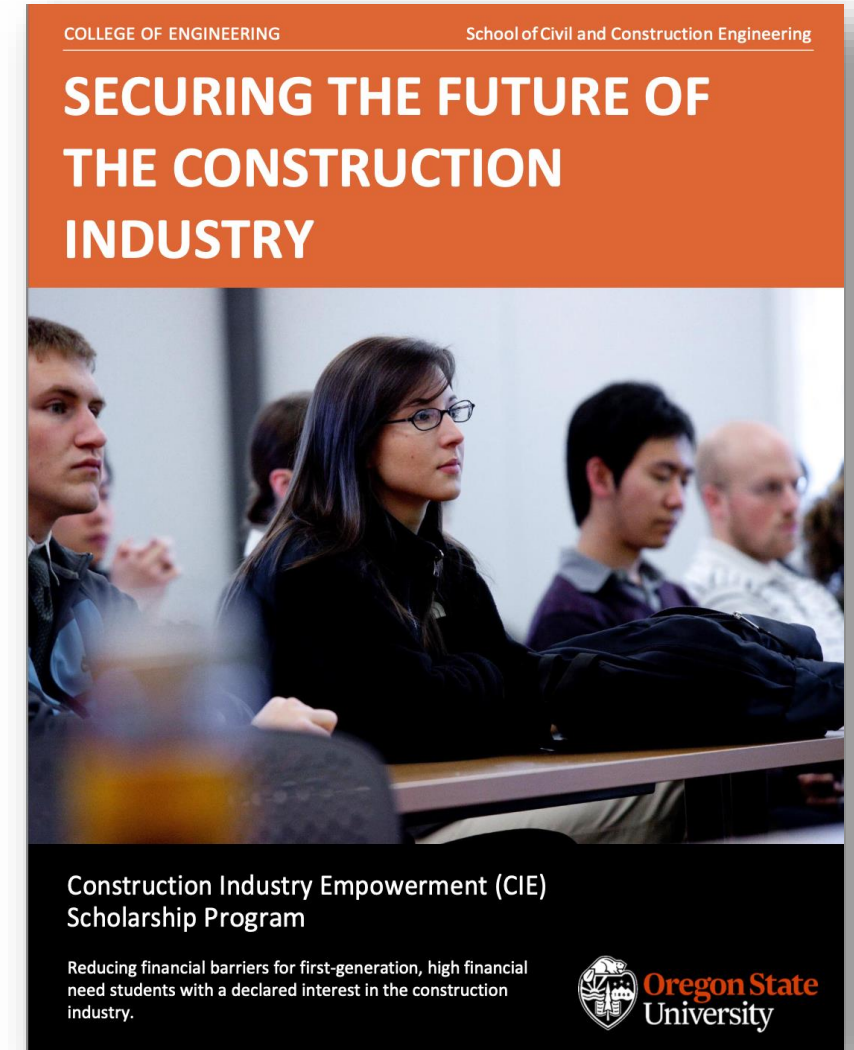






# Construction Industry Empowerment (CIE) Fellows

- New scholarship program with the goal of reducing financial barriers for first-generation, high financial need students with a declared interest in the construction industry.
- About 30% of our student population, 80% of whom are underrepresented
- Program awards \$10,000/year for 3 years (\$8k for tuition and \$2k for experiential learning)
- Support student path to graduation/retention/completion
- Periodic programming such as speakers, field trips, job shadowing and interactions with alumni/professionals
- College of Engineering and OSU Foundation seeking construction industry support to develop next generation of construction industry leaders.



# Construction Industry Partner Program

- **One Stop Shop**

Support recruitment events, scholarships, student learning experiences, travel, innovative curriculum development, research start-ups, lab enhancements, etc.

- **Portal Options**

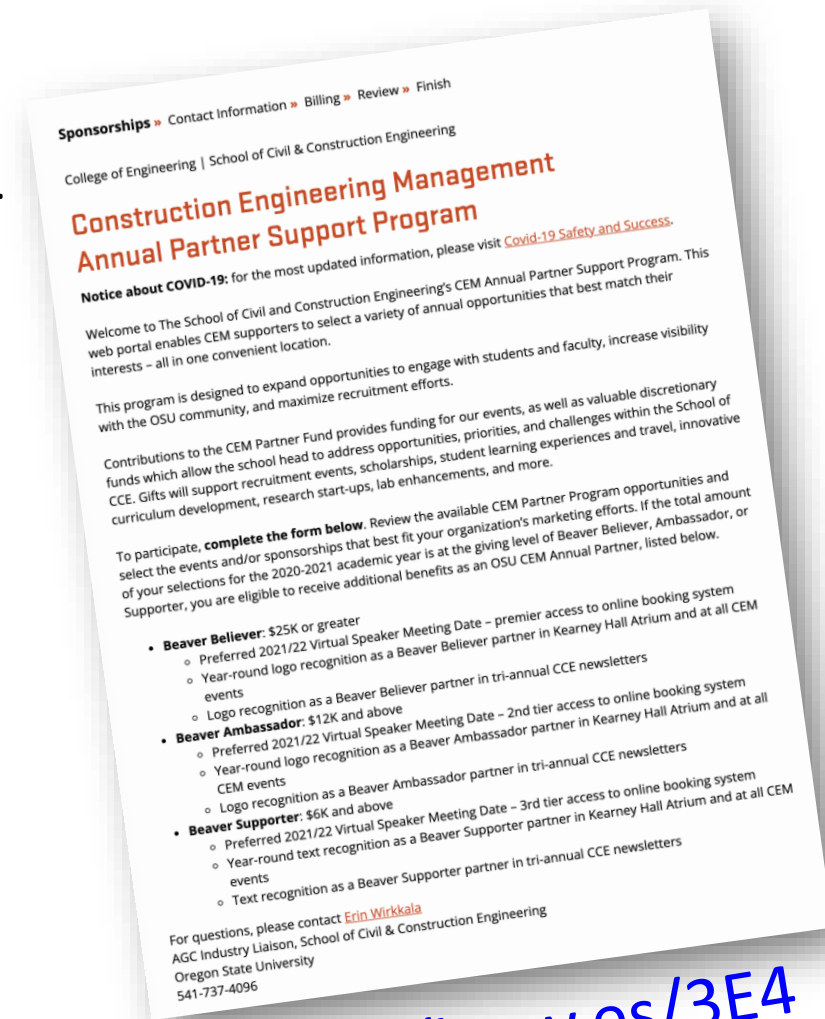
- ASC Student Competition
- Contractors Night tables
- AGC Student Chapter Speaker Meetings
- AGC Student Chapter Golf Tournament
- CEF Golf Tournament
- Distinguished Lecture Series
- CCE Excellence Fund
- Annual Dues

- **Beaver Believers >\$25k | Beaver Ambassadors >\$12k | Beaver Supporters >\$6k**

- **Incentives**

- Preferred speaker meeting dates
- Logo recognition

- **Thank you for your support!**



<https://beav.es/3E4>

## BEAVER BELIEVERS

---



Oregon State University  
College of Engineering

## BEAVER AMBASSADORS

---



## BEAVER SUPPORTERS

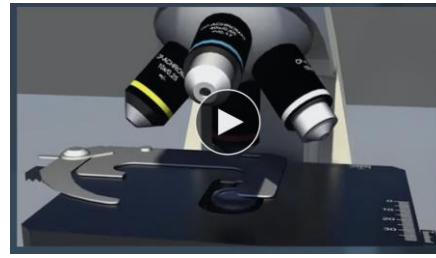
---

<https://beav.es/3E4>

- |  |                                      |                           |
|--|--------------------------------------|---------------------------|
| ▪ Advanced American Construction, Inc. | ▪ Hoffman Construction               | ▪ Q&D Construction        |
| ▪ AWCC Oregon & SW Washington          | ▪ Kerr Contractors                   | ▪ R&H Construction        |
| ▪ BMW Constructors                     | ▪ NECA Oregon-Columbia Chapter       | ▪ Traylor Bros., Inc.     |
| ▪ Bremik Construction                  | ▪ Olsson Electric                    | ▪ W.R. Gamble Engineering |
| ▪ Charter Mechanical                   | ▪ PCI: Performance Contracting, Inc. | ▪ Walsh Construction      |
| ▪ Emerick Construction                 | ▪ Pence Construction                 | ▪ Whiting-Turner          |
| ▪ Garney Construction                  | ▪ Perlo Construction                 |                           |



# About Ecampus



Oregon State University  
College of Engineering

- History of distance learning [Farms | trains | radio | TV | VHS | Online]
- Modes: Online, Hybrid (online + in person), Hybrid (remote + online)
- Access for underrepresented minority, rural, non-traditional, full-time employed, place/time bound and have family obligations
- Attract national / international / military / veteran audience
- Average student is 30 years old, transfer and returning students
- OSU access and equity commitments/traditions
- Employer retention / career development / "upskilling" / lifelong learning
- Can complete degrees while working full time / anywhere
- Workforce needs: retirements, diversity, job openings
- Assist with flexibility, completion, degree progress for in person students
- [ecampus.oregonstate.edu/course-demo/](https://ecampus.oregonstate.edu/course-demo/)



#5 in the nation

**>50%**

of CE / CEM / ARE degree  
courses are available

**91**

Undergraduate/graduate  
programs/certificates

**1600**

Courses available online in 110+  
subjects



**31**

Average age



**8,000+**

Graduates



**60**

Countries



**28,263**

OSU students took  
an Ecampus class



**12,276**

Exclusively  
distance students



**50**

States



<https://beav.es/Ufb>  
Currently 476 members....



# Upcoming Events



Oregon State University  
College of Engineering

## **Contractors Night**

Thursday April 7, 2022

## **Grow To Pro**

Saturday April 23, 2022

## **Dam Proud Day**

April 27, 2022

## **AGC Student Chapter Golf Tournament**

Friday May 6, 2022

## **CEF Golf Tournament**

September 2022



Two graduates are shown from the chest up, wearing black academic gowns and multiple leis made of pink and white flowers. The graduate on the left has long dark hair and is smiling broadly, with her right fist raised. The graduate on the right is wearing a green leafy headpiece and has her mouth open in a shout or cheer, with both fists raised. They are standing in front of a red brick wall. The text "WE WANT YOU TO JOIN US!" is overlaid in large white capital letters across the bottom half of the image.

**WE WANT YOU TO  
JOIN US!**



# Thank You! Go Beavs!



**Oregon State University**  
College of Engineering

