

Western Pallet

Magazine for WPA Members
June 2019

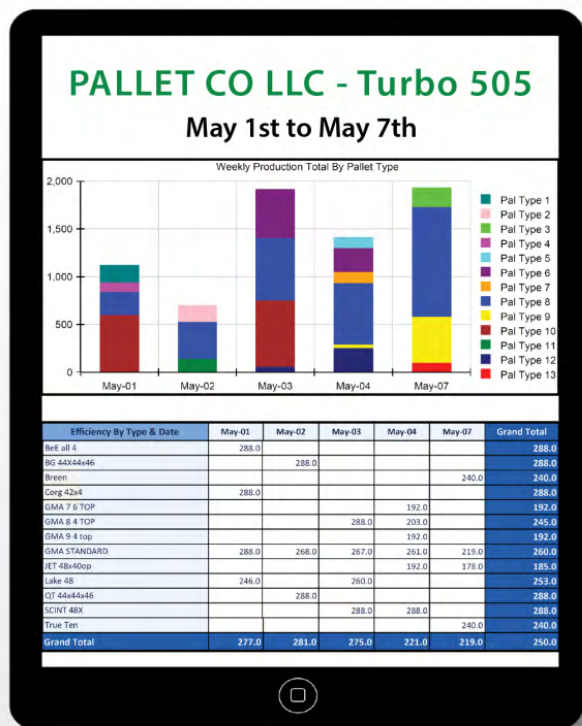
Magazine



**Stockton Pallet Operators Face Regulatory Heat
after Recent Blazes**

CWPCA Meeting Highlights from Victoria, BC

MONITOR PALLET PRODUCTION REMOTELY



LIVE DATA PORTAL

By Viking Engineering

AVAILABLE ON NEW TURBO 505 MACHINES

AVAILABLE ON TURBO 505 UPGRADE KITS

PRODUCTION REPORTS SENT TO YOUR DEVICE

VIEWABLE ON MOBILE, TABLET OR DESKTOP

EXPORT & ANALYZE DATA IN EXCEL



Industry Leading Quality, Innovation & Service

Viking Engineering & Development - 763-571-2400 - www.VikingEng.com



Get More Production AND Profit... Without Compromise!

*In Today's Market, You Need Equipment That Requires Minimal Investment
Yet Help You Stay Ahead Of The Competition.*

Go Fast, Produce Fast, Profit Fast!

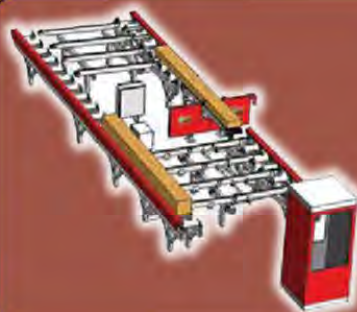


CHOPSAWS

- 24" CARBIDE BLADES - STANDARD
- 26" BLADES AVAILABLE
- 6 X 10 CAPACITY
- 7-1/2 HP MOTOR — STANDARD
- 10 HP MOTOR AVAILABLE
- MANUAL AND AUTOMATED MODELS

RESAWS

- PRODUCE PALLET LUMBER, SLAB RECOVERY, FENCE BOARD, LAPP SIDING & SHINGLES
- NEW - POWERED BELT RETURN
- QUICK AIR TENSION SYSTEM
- HEAVY DUTY ARBOR BEARINGS
- ENCLOSED HYDRAULIC PACK
- ADD BAND HEADS AS YOU NEED THEM



GRADE SYSTEMS

- 16" x 16" x 16' CAPACITY
- 30 HP GRADE RESAW
- 30" BANDWHEELS
- COMPUTER CONTROL NETWORKS
- SAW POSITION DIGITAL DISPLAY
- HEAVY-DUTY FRAME CONSTRUCTION

DEDUSTERS

- HYDRAULIC DRIVEN BOARD KNOCKER PREVENTS NEARLY ALL JAMS
- 0-700 FPM! — VARIABLE SPEED
- CHANGE FOR BOARD THICKNESS IN UNDER 60 SECONDS!
- SIDE DEBURRING BRUSH OPTION



STACKING RACKS

- STRAP CHANNELS MAKE BANDING BUNDLES EASY
- SIMPLY OPEN THE DOOR FOR FORKLIFT ACCESS
- CASTERS AVAILABLE
- CUSTOM SIZES AVAILABLE

DOUBLE-END TRIM SAW

- 20" BLADES - STANDARD
- VARIABLE INFEED CHAIN SPEED
- PRECISION LASER GUIDES
- SIMPLY ADJUST LENGTH OF CUT WITH THE TURN OF A HANDLE
- INCLINED WASTE CONVEYOR OPTIONS



Be Sure To See What's New On Our New Website! www.gofastmfg.com

1-800-854-7439

E-Mail: sales@gofastmfg.com • Fax: 920-227-1961

We Have New and Refurbished Units Available

Notcher Systems • Single-End Trim Saws • Custom Equipment

Western Pallet



WPA MAGAZINE

WPA EXECUTIVE

Annie Montey	President
Beatrice Vasquez	Vice-President
Scott Gutierrez	Secretary/Treasurer
Lindsey Shean-Snowden	Past President
Dave Sweitzer	Executive VP

DIRECTORS

Caroline Beach-Skinner
Sukhi Brar
Baxter Gladden
Rod Lucas
Steve Mazza
Ralph Rupert

ASSOCIATE DIRECTORS

Ryan Greenwood
Tod Kintz
Derek Sampson
Jason Saunders

Please direct inquiries about the WPA to
David Sweitzer, Executive Vice-President
P.O. Box 1095, Camas, WA 98607
Ph. 360 335-0208
Email:
wpa@westernpallet.org
Website:
www.westernpallet.org

North American Softwood Prices

Softwood prices listed as of June 19,
2019, courtesy of NRCAN.

7

WPA New Members

WPA is pleased to introduce three
new members.

7

Residential Construction Update

U.S. housing start information for
April 2019.

11

Diesel Fuel Update

New information updated May 20,
2019.

12

NAM Survey: Optimism Dips

Uncertainty is impeding market
confidence, according to NAM

13

***All of the productive machinery solutions you need –
JUST A CLICK AWAY***



**For specs, video, and more,
go to: PRSGroupInc.com**

**CALL 866-546-8864 TODAY TO FIND OUT HOW WE
CAN ADVANCE YOUR BUSINESS THROUGH AUTOMATION**



Stackers • Conveyors • Dismantlers • Trim Saws • Band Saws • Splicers • Platers • Nailing Equipment • Used Machinery



**North American
FOREST PRODUCTS LTD.**

Providing Quality Pallet Stock Since 1998.

Toll-Free: 1-877-666-0220 | Email: info@naforest.com | Website: www.naforest.com

Cover Story:

Pallet Recyclers in Stockton Face Increased Scrutiny After Fires

15



Other Features

- 14 Wood-Mizer Opens Pacific Northwest Service Center
- 16 CWPCA Enjoys Successful Annual General Meeting in Victoria, BC
- 20 Social Media Roundup
- 24 The Global Forest Industry in the 1Q/2019
- 25 Successful FEFPEB Spring Meeting Held in Edinburgh
- 27 Lightning Adds Microban® Technology to Inhibit Bacteria Growth
- 28 News Briefs
- 29 Upcoming Events

Western Pallet Advertising Sponsors

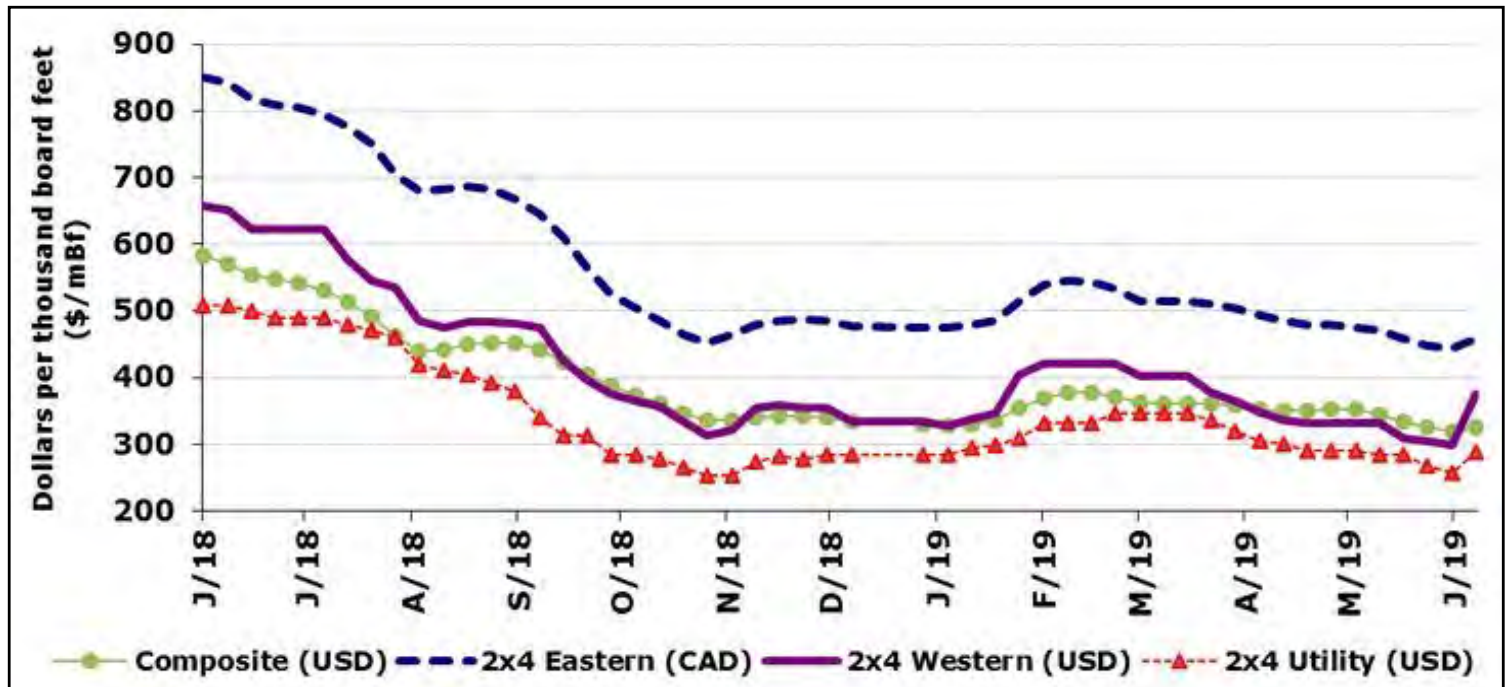
Advance Lumber
Coral - USA
Go Fast Manufacturing
Weaver Wood, LLC
North American Forest Products

Pallet Machinery Group
PRS
Timber Products Inspection
Viking Engineering & Development

Northwest Hardwoods

North American Softwood Prices

Weekly softwood lumber prices to June 19, 2019 are shown below, sourced at <http://www.nrcan.gc.ca/forests/industry/13309>.



New Members

The Western Pallet Association is pleased to announce the following new members:

AJ Cheponis
Benchmark Pallets
445 E Cheyenne Mt Blvd Ste C195
Colorado Springs, CO 80906
Phone: (954)520-9220
Web: www.benchmarkpallets.com
Email: aj.cheponis@benchmarkpallets.com
Sponsor: AJ Cheponis, Benchmark Pallets

Heath Wood
Mesa Revenue Partners
1540 E University Avenue
Suite 501, Mesa, AZ 85209
Phone: (480)968-4958

Fax: (504)471-0948
Web: www.mrpcollects.com
Email: hwood@mrpcollects.com

John Tillery
Whiteboard Risk & Insurance Solutions
3665 Ruffin Road #307
San Diego, CA 92123
Phone: (858)223-1170
Web: www.whiteboardrisk.com
Email: john@whiteboardrisk.com
Sponsor: Kathleen Dietrich, Commercial Lumber & Pallet Co



ISN'T IT TIME TO CHANGE YOUR MACHINERY SUPPLIER?

***Reap the benefits of our
simpler, more rugged solution.***

Pallet makers in the U.S. and Canada face unique challenges. Lucky for you, Corali is uniquely qualified to solve these tough issues. We're Europe's premier pallet-making equipment manufacturer, with dependable U.S. based sales, parts and service. We've been exceeding expectations for over 60 years, and we have the experience and know-how to solve even the toughest problems. Get to know us, and get ready to be impressed.

513-588-3199 | Coral-USA.com | Jeff@StitchingandGluing.com

CORALI-USA

European manufactured, Cincinnati based.



National Wooden Pallet
& Container Association
Pallets Move the World®
Member



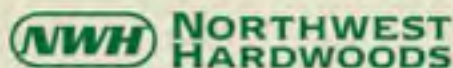
PRECISION MILLED

Northwest Hardwoods alder pallet components exceed the NWPCA uniform standards. Our consistent precision milling is the industry benchmark and our on-time delivery puts it in your yard when you want it. Northwest Hardwoods pallet stock: an easy choice to make.

For more information contact: Jeff Stoddard, Director of Operations

Jeff.Stoddard@northwesthardwoods.com

541-915-9876 or 503-277-2634



northwesthardwoods.com

FIVESTAR PALLET PLATES

"The Stringer-Mate Splicer & FIVESTAR Pallet Plates are great assets to our business. These valuable tools allow us to recycle small material that would otherwise be discarded, exponentially increasing our bottom line."

Bill Shirbroun
President

Was Broken Pallet Company, Inc
Moorland, IA



CONTACT US TODAY TO
FIND OUT HOW WE CAN
ADVANCE YOUR BUSINESS
THROUGH AUTOMATION



866-546-8864
PRSGroupInc.com

Stackers - Conveyors - Dismantlers - Trim Saws - Band Saws - Splicers - Platers - More



MSA 360 HT CANA
MSA 350 HT CANA
MSA 350 HT CANA
MSA 350 HT CANA

CWPCA
ACWPC

WPA

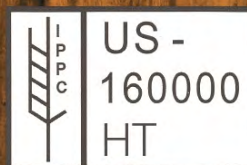
ON TIME ON GRADE FOR OVER 18 YEARS

Specialized in Pallet
Stock for Automatic
Pallet Nailers

Quality Canadian Wood Mill Direct
Deck Boars / Stringers
IPPC / KD / HT / Green Stock
Truck & Rail to US & Mexico
HABLAMOS ESPANOL

WEB www.theadvancegroup.net
EMAIL sales@theadvancegroup.net
TOLL FREE 1-888-580-4918
PHONE 604-580-4918

Export Using Wood Packaging and Bracing?



AUDITED BY
TP[®]



AUDITED BY
TP[®]
DUN

*Let TP handle your wood packaging
certifications.*



TIMBER PRODUCTS INSPECTION

www.tpinspection.com

Matt McGowan
(770) 922-8000 ext. 156
(678) 480-2451 cell
mmcgowan@tpinspection.com

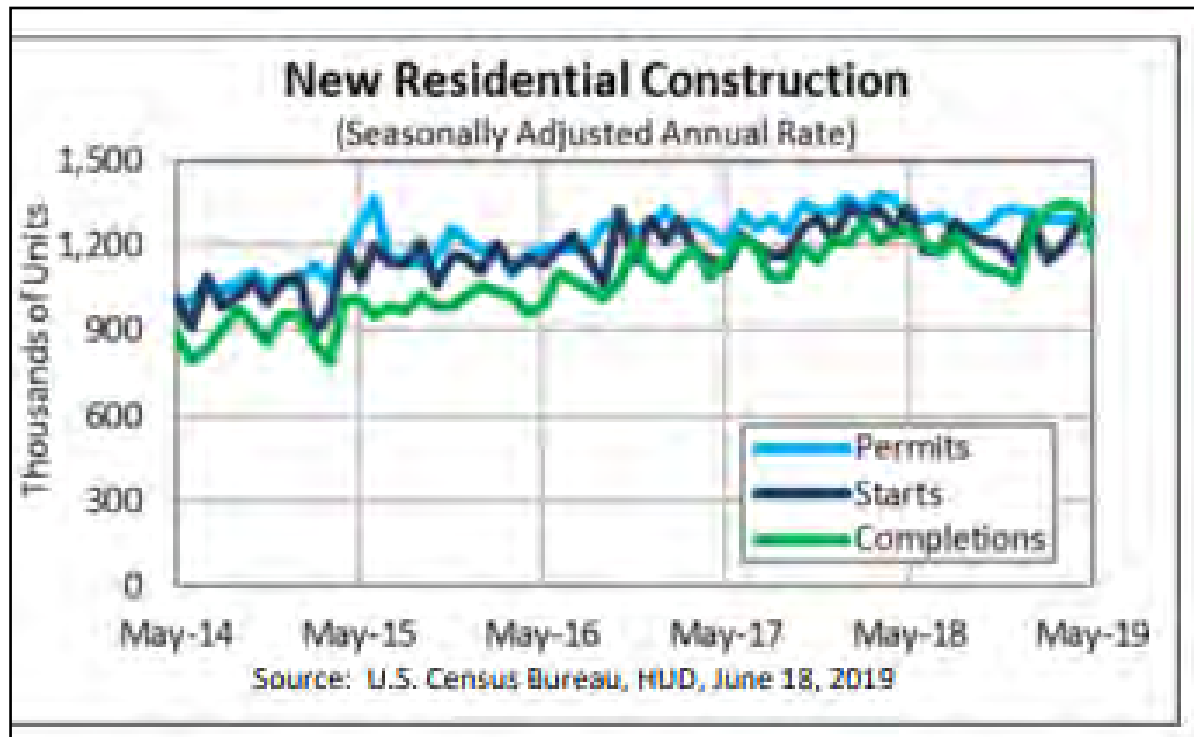
We also offer SFI
certification.



SUSTAINABLE
FORESTRY
INITIATIVE

Residential Construction, May 2019

Released June 18, 2019 (www.census.gov)



The U.S. Census Bureau and the U.S. Department of Housing and Urban Development jointly announced the following new residential construction statistics for May 2019.

Building Permits

Privately-owned housing units authorized by building permits in May were at a seasonally adjusted annual rate of 1,294,000. This is 0.3% above the revised April rate but is 0.5% below the May 2018 rate of 1,301,000. Single-family authorizations in May were at a rate of 815,000; this is 3.7% above the revised April figure of 786,000. Authorizations of units in buildings with five units or more were at a rate of 442,000 in May.

Housing Starts

Privately-owned housing starts in May were at a seasonally adjusted annual rate

of 1,269,000. This is 0.9% below the revised April estimate of 1,281,000 and is 4.7% below the May 2018 rate of 1,332,000. Single-family housing starts in May were at a rate of 820,000; this is 6.4% below the revised April figure of 876,000. The May rate for units in buildings with five units or more was 436,000.

Housing Completions

Privately-owned housing completions in May were at a seasonally adjusted annual rate of 1,213,000. This is 9.5% below the revised April estimate of 1,340,000 and is 2.8% below the May 2018 rate of 1,248,000. Single-family housing completions in May were at a rate of 890,000; this is 5.0% below the revised April rate of 937,000. The May rate for units in buildings with five units or more was 319,000. **(Cont'd Page 12)**

EPA Diesel Fuel Update

Updated May 20, 2019

Existing Home Sales Ascend 2.5% in May

Existing home sales rebounded in May, recording an increase in sales for the first time in two months, according to the National Association of Realtors®. Each of the four major U.S. regions saw a growth in sales, with the Northeast experiencing the biggest surge last month.

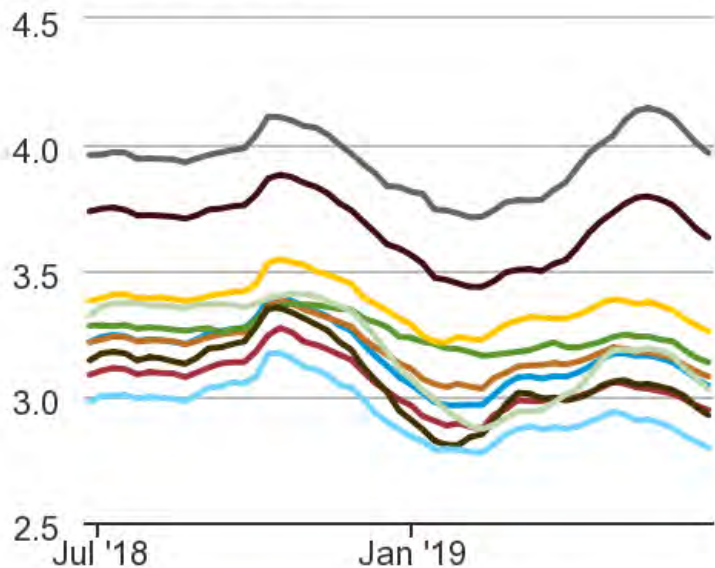
Total existing home sales, completed transactions that include single-family homes, townhomes, condominiums and co-ops, jumped 2.5% from April to a seasonally adjusted annual rate of 5.34 million in May. Total sales, however, are down 1.1% from a year ago (5.40 million in May 2018).

Lawrence Yun, NAR's chief economist, said the 2.5% jump shows that consumers are eager to take advantage of the favorable conditions. "The purchasing power to buy a home has been bolstered by falling mortgage rates, and buyers are responding."



On-Highway Diesel Fuel Prices

(dollars per gallon)



Source: Energy Information Administration

WEAVER WOOD, LLC



NEW WEST COAST CUT STOCK PRODUCER
Will be offering quality cut stock
DIRECT FROM THE MILL
standard and unique cuts
shipping via rail or truckload

CONTACT: JACOB WEAVER

111 MT HIGHWAY 285 PHONE: 406.266.4840
TOSTON, MT 59643 FAX: 406.266.4800

NAM Survey: Manufacturing Optimism Dips in Q2 Amid Trade Uncertainties, Workforce Shortage

The National Association of Manufacturers has released the results of the Manufacturers' Outlook Survey for the second quarter of 2019. The survey shows a dip in manufacturers' optimism amid trade uncertainties, given the prospects of tariffs on Mexican goods and still unresolved threat of auto tariffs. A positive outlook for their business was registered by 79.8% of manufacturers in the second quarter, down from 89.5% in the first quarter.

"Clearly, optimism is still strong among manufacturers, but you can't overlook the fact that trade uncertainties are causing concern for manufacturers," said NAM Chief Economist Chad Moutray, who conducted the survey. "All things equal, I would expect these numbers to improve if we get the U.S.-Mexico-Canada Agreement across the finish line, strengthen our trading relationships by removing the threat of 232 auto tariffs and get a trade deal with China done."

The inability to attract and retain a quality workforce remained manufacturers' top business concern (68.8%) in the second quarter. The survey also found that a majority of manufacturers (56%) are concerned about trade uncertainties with regards to the USMCA, a U.S.-China trade

agreement, looming 232 auto tariffs and the now-resolved threat of U.S. tariffs on Mexico. In addition, nearly half of manufacturers are concerned about increased raw material prices.

The Manufacturers' Outlook Survey has surveyed the association's membership of 14,000 large and small manufacturers on a quarterly basis since 1997 to gain insight into their economic outlook, hiring and investment decisions and business concerns. The NAM releases the results to the public each quarter.



WoodLock
B I O - S H I E L D

**THE SAFE
NON-CAUSTIC
MOLD INHIBITOR**

PMG
PALLET MACHINERY GROUP

PALLETMACHINERY.COM | 540-644-9220
INFO@PALLETMACHINERY.COM

Wood-Mizer Opens Industrial Authorized Sales Center in Pacific Northwest

WPA-member Wood-Mizer recently introduced Heicor Enterprises, LLC as its industrial authorized sales center in the Pacific Northwest. Heicor will provide all industrial products along with select professional products from Wood-Mizer. Wood-Mizer Oregon, the established branch office near Portland, Oregon, will continue to provide sales and service for Wood-Mizer professional sawmill equipment and blades in the area.

In addition to their world-leading portable sawmill equipment, Wood-Mizer's equipment line has grown significantly and now includes machinery for the pallet industry, remanufacturing operations, cabinet and millwork shops, small log sawmill processing systems, headrigs, multirips, and sawmill systems that can produce tens of thousands of board feet of lumber per shift. "Wood-Mizer is committed to serve the needs of hobbyist, professional, and industrial-level wood processing clients throughout the world," said Greg Bacon, Wood-Mizer Sales Director. "It became apparent that Heicor was the best choice to represent Wood-Mizer industrial products in the Pacific Northwest because of their experience and industry knowledge. We're confident that Heicor can successfully represent Wood-Mizer in a way that is beneficial for both our company and our customers for years to come."



Located in Monmouth, Oregon, Heicor Enterprises was founded in 2016 by Glen Heiner (at right) and Kevin Corder who both have extensive experience with Wood-Mizer. Kevin spent 27 years at Wood-Mizer and was the head of the Industrial Products Division, and Glen was an Industrial Sales/Service Specialist at Wood-Mizer for more than a decade. Glen also has experience on the user side as the owner of Portland Specialty Lumber, a millwork firm in Portland, Oregon.

Kevin Corder, President of Heicor Enterprises, said "We are very excited to become an industrial sales center for Wood-Mizer. Glen and I are both former longtime employees and it's great to be 'back in the saddle' again! We are eager to present Wood-Mizer machines as a solution to many of the needs and opportunities in this region. We know the function and quality of these products along with the legendary support will fit well into the markets we will serve."



Pallet Recyclers in Stockton Face Increased Scrutiny After Fires

WPA executive members have received reports that over the last month that the City of Stockton, California has closed down up to five pallet companies operating in the city. Other operators have apparently been told to vacate their properties within 30 days. Local enforcement officials are reportedly taking a strict regulatory approach regarding fire protection requirements.

Operators report that the heightened enforcement has come in the wake of two major pallet fires in the city since April. They say they are suffering due to tightened regulations and are confused by the lack of transparency and are unclear if the actions are warranted.

In nearby Linden, California, a pallet company that has been operating for over six months has been now apparently asked to vacate the location, after having invested around \$75,000 in electrical upgrades.

Western Pallet Magazine reached out to five pallet operators in Stockton, and was only successful in interviewing one of them. The operator, speaking anonymously, stated that their operation has not received any additional scrutiny subsequent to the fires. He added, however, that the pallet company has a good relationship with officials and has been compliant in meeting fire hydrant and access lane requirements.

Stockton has a recent history of enacting sudden business closures over code violations. Last year, one news account reported that several local retail businesses were suing the city after they were shut down without notice in 2017. Two years later, nine businesses are still closed.

Western Pallet Magazine reached out to Dr. Brad Gething of NWPCA. While Dr. Gething couldn't speak directly to the Stockton situation, he stressed the importance of ensuring compliance, and building a positive relationship with local compliance officials.

Resources

NWPCA Fire Code Compliance Manual (Download)

New Fire Codes for Outside Pallet Storage and What They Mean for Your Business (Page 17)

Outdoor Storage of Wooden Pallets Are You in Compliance With New Fire Codes (YouTube)

Bill Koffel, www.koffel.com (Experienced fire consultant to the pallet industry)



CWPCA Enjoys Successful Annual General Meeting in Victoria, BC

The Canadian Wood Pallet and Container Association (CWPCA) held its AGM June 7-9 in Victoria, BC at the Inn at Laurel Point. The reception and dinner overlooked Victoria's beautiful inner harbor. The meeting marked a social emphasis, including the annual general meeting and dinner on Friday evening, a half day business program on the Saturday morning that allowed time for whale watching and fishing outings on Saturday afternoon prior to the evening reception, and golf on Sunday.

The event achieved the highest attendance in recent years and was bolstered by West Coast U.S. attendees from the Western Pallet Association.

How to Die Young at an Old Age

Living to a ripe old age can be a blessing or a curse, according to Dr. Dave Hepburn, the keynote speaker at the business session. While it can mean spending more time doing the things you love, or with the ones you love, it can also be "a time of melancholy, loneliness, poverty, frailty, loss of friends, loss of a loved one or even spouse," he said. Growing old for many people is synonymous with just basically giving up and waiting to die.

"I'm here to tell you that the sooner the growing old is stripped of its reflexive dread, then the easier it is for us to benefit

from the opportunities not only for ourselves of being older but what we can also do for others," he said. From his perspective, a healthful and happy old age is the outcome of taking appropriate steps along the way to increase its likelihood. "It is important, I think, that we learn now that aging is something that can be enjoyed rather than endured," he said.

Hepburn offered several tips towards having a happy, full life. His suggestions included attention to diet (more fresh foods and whole grains - foods with anti-inflammatory properties), reducing bad stress, and getting enough sleep. Sleep is essential for the body to affect DNA repairs. It also increases cortisol, which reduces tumors.

Other important lifestyle choices include staying active (take the stairs, park the car further away), and to retain a childlike curiosity for life. An active lifestyle is important to a happy life, versus a sedentary approach. "Realize the ship that is in a harbor is safe, but that's not what ships were built for," he commented, drawing a parallel to how people choose to spend their senior years.

Laughter, he said, is also important. An average child, he noted, laughs 300 times daily versus 40 times for an adult. His recommendation is to start by memorizing a few jokes. Humour is infectious, and starting with a few jokes can help



The keynote presentation was thought provoking and often hilarious.

daily versus 40 times for an adult. His recommendation is to start by memorizing a few jokes. Humor is infectious, and starting with a few jokes can help spark more enjoyable relationships. Being engaged in the community and having pets are also positively correlated to having a longer, more healthful life.

"Remember, aging is not lost youth," Hepburn said, but a new stage of opportunity and strength." He finished with a quote from Einstein, "Do not grow old no matter how long you live. Never cease to stand like curious children before the great mystery into which we were born."

ISPM-15: Creating a level playing field to

support wood markets and protect forests

Also on the agenda was Leigh Greenwood, an expert on invasive pests from the Nature Conservancy, a global nonprofit dedicated to protecting land and water. She emphasized the common purposes of the wood packaging industry and the Nature Conservancy with respect to forest protection. A healthy wood products industry is critical to healthy forests, and a robust wood packaging industry is needed to utilize low-grade lumber which is an essential component of the wood packaging market. ISPM-15 is critical to ensuring not only the prevention of wood borne pests and pathogens internationally, but also to the reputation of the wood packaging industry versus



Greenwood: Shippers are controlling their use of lighting to prevent attracting hitchhiker insects.

pathogens internationally, but also to the reputation of the wood packaging industry versus competing materials.

"We want to make sure that all of these things are participating in a level playing field," she said. Solid wood packaging's greatest asset in terms of creating a level playing field is to make it equivalent functionally to all the other mediums through the application of ISPM-15, she continued. When ISPM-15 is followed, then there is no greater phytosanitary risk than with other materials such as plastic and cardboard.

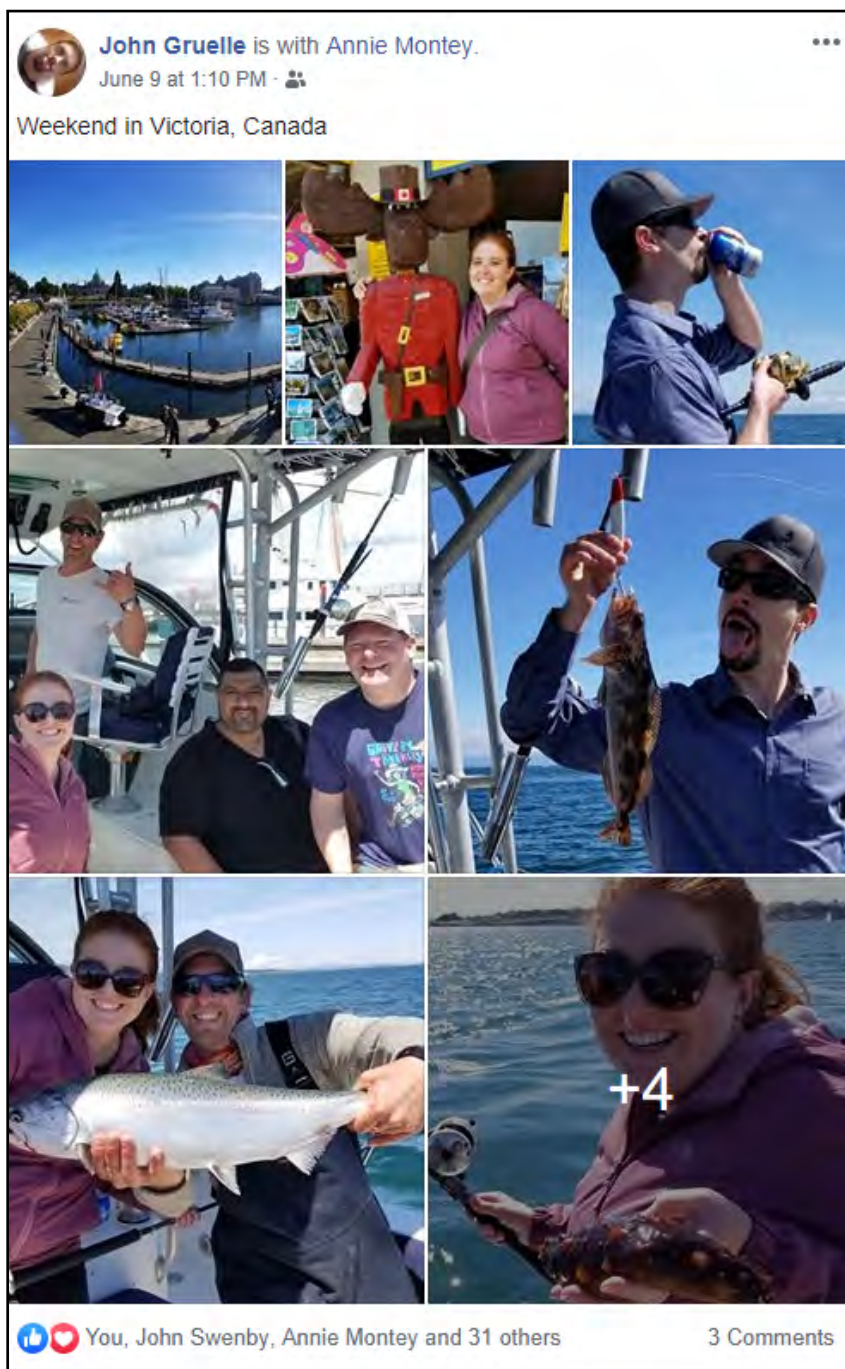
In addition to ISPM-15, Greenwood commented briefly on hitchhiker species that can infest a pallet or container after treatment. She expressed her concerns about intricate plastic pallets that have a grid design that may make it more difficult for Customs inspectors to identify

hitchhikers. She stated that she is not for or against any type of material used in shipping, but that some packaging - in this case, grid-style plastic pallets make the identification of hitchhikers more challenging. One thing that shippers are doing to reduce the challenge of hitchhiker pests is to control lights at night which attract problem insects.

Greenwood urged CWPCA to work with Canadian and U.S. border officials and agencies such as NAPPO and IPPC to stress the urgency of inspection to cut down on infractions that can damage not only forests but the wood packaging industry as well.

Unfathomable price shifts

Keta Kosman of Madison's Lumber Reporter, discussed the lumber market, which she characterized as bananas. Having shifted so far from 2018's record



highs, Scott Geffros, in introducing Kosman, described the price swing as “almost unfathomable.”

“The US housing market has changed so much,” Kosman commented, in assessing how the US market has changed over the last decade, and why it is not behaving in a manner that would have been anticipated in the past. “My opinion is that the overbuilding of 2004 and 2005, and then the subsequent over-correction downward, really messed up (the market),” she said.

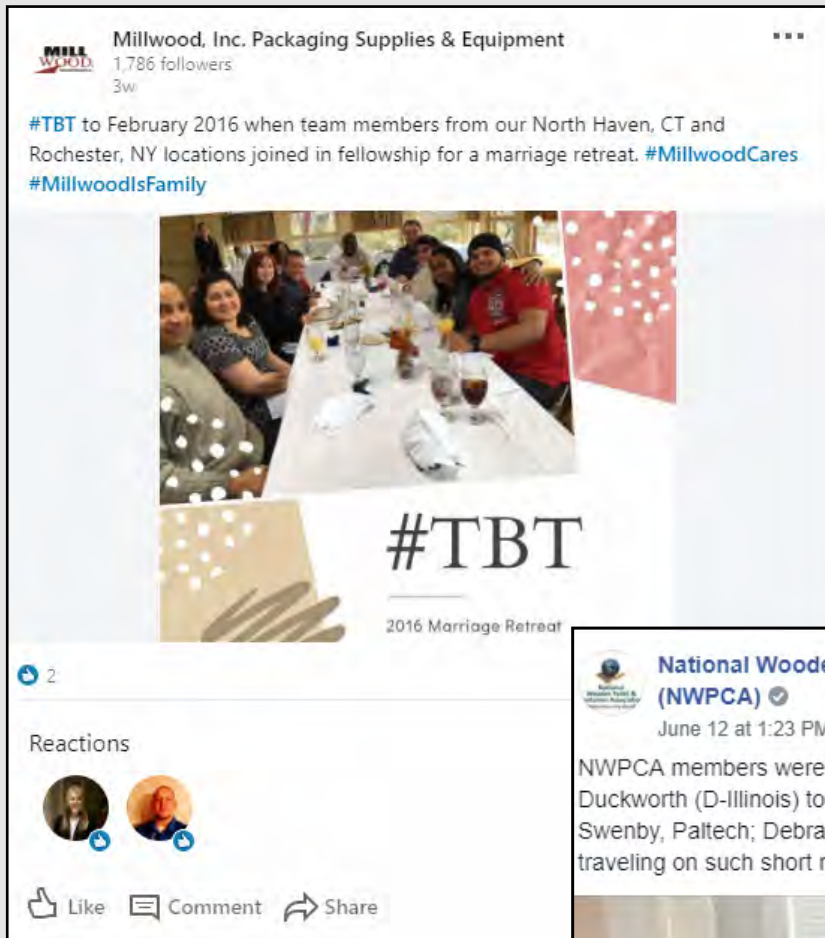
Kosman’s presentation spanned a range of topics, including the impact of log exports on lumber markets, as well as the influence of European softwood imports.

While the sawmill situation in BC looks disheartening in the face of current low prices, shrinking timber supply, and closures, she identified cross-laminated timber as one area of optimism for the lumber sector, given its superior environmental performance to alternatives such as concrete.



Social Media Roundup

What's new in social? Click on images to check.





Keta Kosman • 1st
Owner at Madison's Lumber Reporter
2m

...

The sheer plummet, then flat-line, of North American construction framing softwood lumber prices for most of this year continued last week the massive reversal of the previous week. Wholesaler prices of benchmark dimension softwood lumber commodity Western Spruce-Pine-Fir KD 2x4 #2&Btr (RL) (net FOB sawmill) last week corrected up somewhat further. The ability of Eastern Spruce-Pine-Fir suppliers to raise their prices significantly confirms the upward price movement of lumber commodities in the past two weeks.

Confusion reigns still, however Tuesday lumber futures on the Chicago Merchantile Exchange might provide some clarity, as it closed unchanged from Monday's levels of just below US\$400 on the July and September contracts.

FULL STORY: <https://lnkd.in/g-utQS8>

#construction #sawmill #lumber #building #softwood

Lumber Prices: Current Compared to Recent and Historical Highs, and to Recent Lows

	2014		to		2019			
	Current:	Recent	High:	%	All Time High	% Change:		
and board feet	06/24/2019	June 2018	Change		(Previous or Current)	Current vs. All Time High		
	\$ 363	\$ 550	-34.0%	3Q2005	\$460	-21.1%	\$	
	\$ 402	\$ 622	-35.4%	2Q2004	\$443	-9.3%	\$	
	\$ 440	\$ 690	-36.2%	2Q 2004	\$529	-16.8%	\$	
	\$ 322	\$ 590	-45.4%	2Q 2004	\$500	-35.6%	\$	
	\$ 275	\$ 445	-38.2%	2Q 2005	\$445	-38.2%	\$	

North American Softwood Lumber Prices Continue Dizzying Reversals

madisonsreport.com

Like Comment



Dr. Edward Brindley
@PalletEnterpris

Following

Wood dust can create a major hazard for many people employed with wood-related jobs. Read our article on how to avoid the dangers of wood dust here: bit.ly/2wPCVH3



12:01 PM - 25 Jun 2019



CPULD @CPULD · 5h

CPULD's Unit Load Design and Performance short course is on Aug. 13-15th, 2019. As it's getting closer to this short course, we'd like to remind you to sign up before July 10th to receive discounts on the registration and hotel rates!
ow.ly/cnwC50uv8dn



Jeff Williams · 1st

President, Pallet Repair Systems, Inc. - PRS Group
3w



Another busy day at #Ligna ! #Cape #MecanicaCape #Pallets



15 · 1 Comment

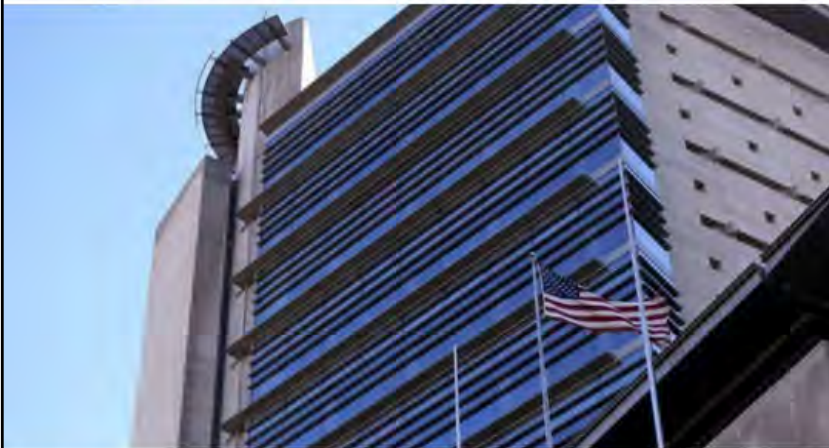


Paul Quandt, CFPS, CLCS • 1st
Commercial Insurance Advisor
1w

On May 20th I wrote and posted the article "6 Reasons to Buy EPLI". Number 5 was "Failure to Employ or Promote". Four days later, it was announced an Oregon company would pay \$80,000 restitution to a prospective employee for failure to hire. To be clear, the restitution was \$80K. The attorney fees were considerably more. If you don't have proper EPLI limits, you are gambling with your, your company's and your employees financial future. Please, review your exposure and purchase the proper amount of EPLI.

If you would like assistance evaluating what amount of coverage your company requires, please call me at [HUB International](#) today.

#beprepared #financialhealth #hubinternational #epli #preventativelaw Chris Keefer SEDCOR Westside Economic Alliance IMA Portland Chapter



Portland company must pay \$80,000 to Hillsboro woman for rescinding job offer after learning she was pregnant

[oregonlive.com](#)



CHEP North America @CHEPna • 4h

Today, @SDCExec released its list of 2019 SDCE100 Award winners and we're one of them! The award honors the "most successful and transformative projects that deliver value to enterprises across a range of supply chain functions." See the full list at: [ow.ly/zUKp50uMjG6](#)



The Global Forest Industry in the 1Q/2019

Global Timber Markets

- The global flow of softwood logs from countries with a surplus of wood raw material to regions with tight, or costly log supply, and higher consumption of forest products continued to expand for the third consecutive year in 2018.
- Sawlog prices fell throughout the world in the 1Q/19 due to either plentiful supply or reduced demand for lumber, depending on region. The Global Sawlog Price Index (GSPI) fell 1.8% to the lowest level noted since the 2Q/17.

Global Lumber Markets

- In 2018, global trade of softwood lumber reached the second highest level ever recorded.
- The free fall of lumber prices in the US came to a halt in early 2019, and prices might have hit a low for this cycle in January.
- Softwood lumber exports from Canada

were down 6% year-over-year in 2018, with the biggest decline being in shipments to China.

- For the first time in five years, Swedish exports of softwood lumber fell year-over-year in 2018. The biggest declines were in exports to Asia and Middle East region, while shipments to the European market remained practically unchanged.
- Despite much uncertainty in the near future for the Chinese economy, lumber imports rose unexpectedly in the 1Q/19 by as much as 14%.
- Russia increased exports of softwood lumber by 7% from 2017 to 2018. This was the sixth consecutive year that exports have increased from the previous year.

Excerpts from the Wood Resource Quarterly (www.WoodPrices.com).

The Membership Drive Is On!

This year's membership drive is now underway, and as always, the competition will be intense.

In addition to valuable cash prizes, the winner now also receives the membership plaque, presented at the Annual Meeting. With the highly successful 2019 Annual Meeting now in the books, it is time to work toward 2020.

When you recruit new members, the entire WPA membership is the winner!

New members can join and pay on the website. Here is the link: www.westernpallet.org

Successful FEFPEB spring meeting held in Edinburgh

Group welcomes change to European Union's Packaging & Packaging Waste Directive

FEFPEB welcomed its members from 15 European countries to its spring meeting, which was held in Edinburgh, Scotland in early May.

The annual gathering included several presentations. The speakers included MSP (Member of the Scottish Parliament) Fergus Ewing, who is the Scottish Rural Economy Secretary, who spoke on the importance of the wooden pallet and packaging sector to Scotland and the outlook with regards to Brexit. Other presenters included Chief Executive of CONFOR, Stuart Goodall, who spoke about the Edinburgh-based organization's work with government to increase stocks of timber and Guy Watt of John Clegg Consulting, who presented the latest report on the UK industry, which he carried out on behalf of the Timber Packaging & Pallet Confederation (TIMCON).

FEFPEB representatives were updated on the potential implications on the industry of Brexit and stressed the importance of its members in the UK and Europe working together to ensure that trade will remain smooth whatever final deal occurs. Attendees heard about the recent work of the European Confederation of Forest Industries (CEI-Bois) in areas including wood availability



and sustainability, free trade policies and wood dust.

FEFPEB's committees for industrial packaging, ISPM15, pallet pools and PR also held meetings during the two-day event.

The spring meeting was organized with the help of the Timber Packaging & Pallet Confederation (TIMCON), which represents the sector in the UK and Ireland. John Dye, TIMCON president, said: "We are very proud to welcome the European pallet and packaging industry to Edinburgh, which as well as being one of the most beautiful cities in the UK, is also a major hub for forest-based industries such as pallets and packaging."

"The spring meeting saw an important



"The spring meeting saw an important exchange of information between members and discussion on subjects including European legislation, recycling and ISPM15," said Ceelaert. "International logistics is connected by its very nature, so collaboration between the UK and our colleagues in Europe and beyond is essential, both now and after Brexit, to ensure that business remains smooth and wooden pallets and packaging continue to play their central role, both as a facilitator of trade and a part of the increasingly prominent circular economy."

FEFPEB welcomes changes to Packaging Waste Directive

In another announcement, FEFPEB welcomed an important change to the European Union's Packaging & Packaging Waste Directive, which affects how recycling targets for wooden packaging are calculated, following work by the industry.

The European Union has accepted that wood used in both the reuse and repair of pallets and packaging have to be included in the calculation of recycling rates.

FEFPEB has informed its members about the changes – which have been incorporated into the Packaging & Packaging Waste Directive.

"Wood used in both the reuse and repair of pallets and packaging has been accepted, which is a real success," said Ceelaert. "Not reaching recycling targets could cause great problems in terms of penalties, so we are happy with this helpful new regulation, with realistic recycling targets, which removes a lot of concern for our industry."

He added that under the revised directive, replacing one component in a pallet also now allows the full weight of the pallet to be accounted for as recycled.

Source: FEFPEB Newsletter

Lightning will include Microban® technology to inhibit growth of bacteria on pallet surfaces

Lightning Technologies has entered into a long term, exclusive partnership with Microban International, the global leader in antimicrobial and odor control technologies, according to an announcement from Microban. Lightning is an alternative material pallet utilizing plywood and a protective coating.



The release makes the claim that Lightning Technologies is disrupting the pallet industry with an array of innovative added benefits that are built into its pallets. To further enhance what is characterized as "The Most Technologically Advanced Pallet In The Industry," the release notes, the pallets will now include powerful Microban antimicrobial technology that will inhibit the growth of bacteria on the pallet surfaces.

"We have had such strong interest and demand from produce and protein growers, pharmaceutical manufacturers, and retailers that we wanted to further enhance the differentiation and cleanliness proposition of our pallets by adding superior antimicrobial product protection," said Jeffrey Owen, CEO Lightning Technologies. "The growth of bacteria on coated and untreated wood pallets has been a significant vulnerability

for all food-related industries. Lightning Technologies is proud to be the only pallet manufacturer with this superior antimicrobial protection in each of Lightning's pallets."

"This is one of the most exciting and innovative products to hit the food & pharmaceutical transportation sectors in years, and we are thrilled to be partnering with Jeffrey Owen and the team at Lightning Technologies," said Michael Ruby, VP of Global Built-In Business at Microban." We entered into this exclusive partnership because we see a clear vision for Lightning adopting an innovations approach and staying ahead of the pack in a space that will continue to become more regulated in the future. We are proud to be on the cutting edge with them and to help in delivering differentiable value to the food industry supply chain."

News Briefs

Higher Than Normal Chance of Wildfires in Northwest Predicted in 2019

The National Interagency Fire Center is forecasting a higher than normal chance of wildfires in the Pacific Northwest, especially West of the Cascades. [Read more.](#)

LPR opens a new service centre in Contrexéville (France)

European expert in pallet pooling, LPR – La Palette Rouge, a division of the Euro Pool Group, is pursuing its network optimization policy and has announced the creation of a new service center, located at Contrexéville (FR), close to the factories of Nestlé Waters, a long standing pallet pooling customer. [Read more.](#)

A new French-language reference book on the wood pallet

SYPAL, the pallet commission of the French National Federation of Wood, has just published *La palette bois, outil cle de votre performance*. (The wood pallet, key tool of your performance.) This small pocket encyclopedia, written in French, is a valuable source of information for all those who use, manage and enhance the wood pallet every day. [Read more.](#)

Brambles|CHEP Launches Zero Waste World in North America

CHEP has announced a new initiative called Zero Waste World at the Sustainable Brands conference in Detroit, MI. This program, being rolled out globally in the coming months, brings together leading retailers and manufacturers to create smarter and more sustainable supply chains. [Read more.](#)

The secret life of a pallet: Exploring a booming Alabama business, its rustic-decor afterlife

Farmhouse decor is all the rage. Rustic, raw aesthetic has taken over Target shelves. The Fixer-Upper Gainess have put their stamp on pale wood paired with vines and white tile. But, Jimmy Wilson doesn't know much about all that.

What Wilson knows is covered in sawdust and sandwiched between miles of soybean crop and buried under the heat of Baldwin County. Wilson knows pallets for what they are. [Read more.](#)

Connect with Western Pallet Association!



Upcoming Events

8/13/2019 - 8/15/2019 Unit Load Design & Performance Short Course, Virginia Tech, Blacksburg VA. www.unitload.vt.edu

9/23/2019 - 9/25/2019 Pack Expo Las Vegas, Las Vegas NV

10/1/2019 - 10/2/2019 NWPCA Fall Plant Tours, Toronto, Ontario. www.palletcentral.com.

10/9/2019 - 10/11/2019 FEFPEB Congress, Hamburg, Germany. www.fefpebcongress.org/

1/17/2020 - 1/21/2020 WPA Annual Meeting, Rancho Mirage, California
www.westernpallet.org

In case you missed them...

(Click on back issues to read or download)

