

Adventure Awaits

Rangely is a place where you can truly unplug and unwind. Surrounded by 1.5 million acres of public lands and averaging 300 days of sunshine, getting outdoors has never been more accessible than it is here. Whether you enjoy motorized, non-motorized, water sports, fishing, hunting, camping, hiking, horseback riding or anything outdoors, we have year-round offerings! Just outside our peaceful town is Canyon Pintado National Historic District which encompasses over 16,000 acres of public land. In Canyon Pintado you can hike solo or take guided tours to Fremont and Ute Native American Tribes Rock Art sites dating back over 1,000 years. Minutes from town you can observe the magnificent Piceance/East Douglas wild horse herd and if you are lucky you may catch a glimpse of more elusive wildlife like black bears, bobcats, or mountain lions! Discover Rangely!



Let us Introduce Ourselves!

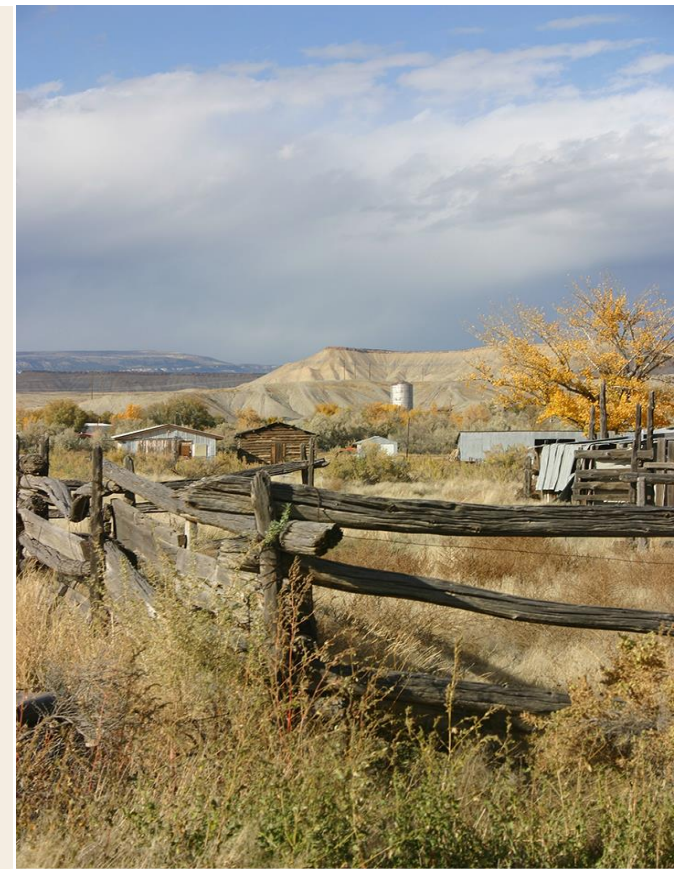
Our Mission: The Rangely Area Chamber of Commerce is committed to promoting and fostering a positive business climate thereby enhancing the quality of economic life in our community

Our Goals: Serve as an effective non-partisan, non-sectarian voice for business, legislative, social, government and community issues affecting the Rangely Area, and the western Slope of Colorado while supporting the civic, social and cultural programs.

Contact us at
970-675-5290

or on the web at www.rangelychamber.com

255 E. Main Street, Suite A
Rangely, Colorado 81648



Rangely Colorado Day Trip 3
*Historical Sites,
Rangely Automotive
Museum, & The TANK*

“This is a nice location with a bunch of information about the local animals and environment. There are several along the road and I would suggest trying to visit them all.”

Michael Mann
Google Review



Rangely Automotive Museum



The Rangely Automotive Museum offers a collection that marvels in the long history of the automotive revolution and includes numerous automobiles that are exceedingly rare. Here you will find a breathtaking collection that is diverse in character and age. You'll find the Rangely Automotive Museum at the intersection of Main Street (highway 64) and Stanolind Avenue. Open seasonally from May-October.

Rangely Automotive Museum
128 S. Stanolind Avenue
Rangely, CO 81648
(970) 675-8222

<https://www.rangelyautomuseum.com/>

The TANK Center for Sonic Arts

In 1976, sound artist Bruce Odland was shown the place by two Rangely locals. Odland understood immediately that he had stumbled upon a treasure. For years after Odland's discovery, The TANK became a secret performance and recording space for a dedicated group of sound artists and musicians. Since 2015 The TANK has been drawing national acclaim.

From 9am to 1pm every Saturday from May through October, the public is invited to enjoy, explore, and experience a shared sonic environment, free of charge, no reservations required.

The TANK Center for Sonic Arts
233 County Road 46
Rangely, CO 81648
(518) 789-4182

<https://tanksounds.org/>



Rangely Area Historical Sites, Day Three

The Fremont Culture is dated from about 650 CE to about 1150 CE and was followed by the Shoshone and Ute Indians, all of whom left their marks on the canyon walls.

Keely's Homestead >>

Level of Difficulty: Easy

milepost 4.8 (CR65)
(40o11.9652'N,108o44.8242'W)

This is NOT a rock art site, but the remains of an early homestead. The roadway cuts through the site with a few timbers and part of the foundation remaining on the uphill side and evidence of Walter Keely's life scattered around the area. His hand dug cistern is located on top of the low ridge about 100 yds. north of the homestead. Walter's fenced gravesite is across the road in the junipers.



Ute Horse Site>>>>>>>

Level of Difficulty: Easy

milepost 2.9 (CR65)
(40o11.0418'N,108o43.3242'W)

Travel north on CR65 towards the Deserado Coal Mine. You will need to pull off on the right shoulder before you reach milepost 3 (there is no pull out). The rock art is 250 yds. up the shallow draw to the cliff face. Back south along the cliff face a short way you can find grooves in the rock face left by the sharpening of bone awls and needles.

For your safety and enjoyment please take into consideration our level of difficulty ratings.



Reservoir Site>>>>>>>

Level of Difficulty: Moderate

Use caution steep terrain!

milepost 26.9 (SH64)
(40o 8.8086'N, 108o 42.3534'W)

Turn north on the dirt road adjacent to milepost 27 and proceed through the opening in the fence. Take the first left fork in the two-track and travel back west parallel to the highway until the road curves back to the left and is ready to take you back the way you came. You are now above the draw that has the rock art panels. You will walk down into the draw, working to the right towards the reservoir for about 200 yds.



Birding at Kenney Reservoir>>>>>>>>>>>>>

*Handicap Accessible

Turn off of Highway 64 into the first pullout at Kenney Reservoir on your way back towards Rangely. Kenney Reservoir is a birding hot spot with over 70 different birds spotted, ranging from the American White Pelican to the Gray-crowned Rosy-Finch. In the spring songbirds such as the brightly colored Western Tanager and Lazuli Bunting make a stop in the trees along the White River and in neighborhood yards. The wetlands on the east side of the reservoir have an abundance of waterfowl, eagles, and hawks.



The town of Rangely was incorporated in 1947 even though it had been inhabited thousands of years prior by the Fremont people. Later the Shoshone, Ute Indians, Pioneers, and ranchers lived in the area. Rangely is located on a high desert plateau at 5,200 feet above sea level and depends on the water from the White River, which runs through the town in an east-to-west direction for survival and recreation.