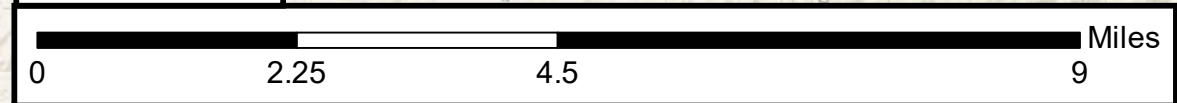
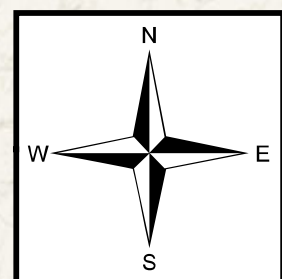
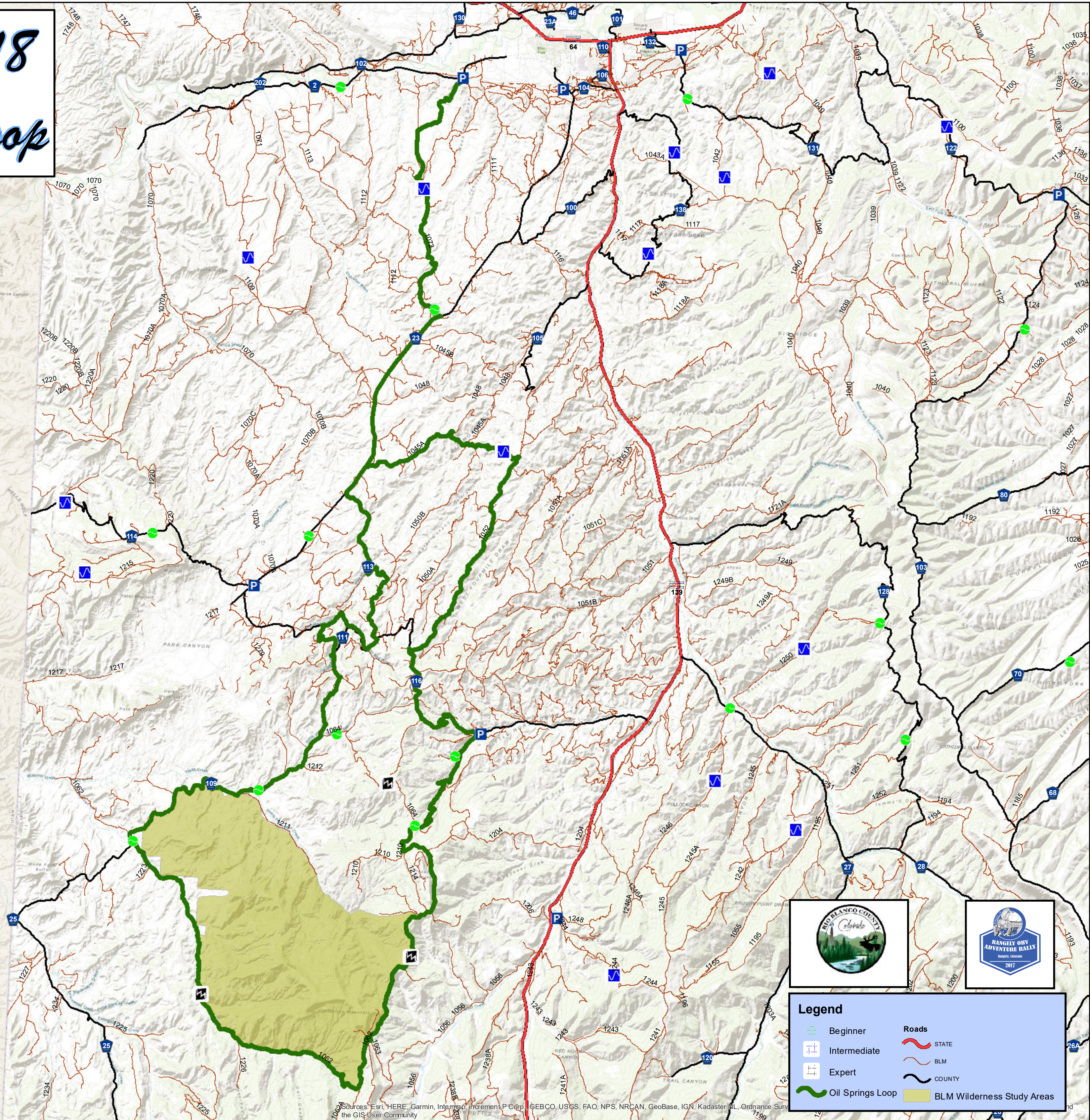


R.O.A.R 2018

Oil Springs Loop



These maps and GIS products are mere representations of the land, features, lines, corners and points shown. These maps and GIS products are not intended to and do not replace actual legal surveys, ownership, legal descriptions and other information contained in official government records. Independent verification of all data contained herein should be obtained by any user of the map or GIS products. Rio Blanco County makes no warranty as to the accuracy of property boundaries, or placement, or location of any map features. Any user of these map or GIS products accepts same AS IS, WITH ALL FAULTS, and assumes all responsibility for the use thereof.



Legend

Beginner	STATE
Intermediate	BLM
Expert	COUNTY
Oil Springs Loop	BLM Wilderness Study Areas

Sources: Esri, HERE, Garmin, Intermap, increment P Corp., GEBCO, USGS, FAO, NPS, NRCAN, GeoBase, IGN, Kadaster NL, Ordnance Survey, the GIS User Community