

ROAR

Rangely OHV Adventure Rally

Trail Guide





WHETHER YOU RIDE A MOTORCYCLE, DIRT BIKE, ATV, OR UTV, WE'VE GOT EVERYTHING YOU NEED FOR BEFORE AND AFTER YOU RIDE. YOU WON'T FIND A BETTER SELECTION OF HELMETS, RIDING GEAR, TIRES, PARTS, AND MORE FROM ALL THE MOST POPULAR BRANDS.



2080 S. 1500 E. VERNAL, UT
435-781-8818 | 877-936-0031

WWW.RRMOTORSPORTSUT.COM

Instagram

RRMOTOSPORTSUT

Facebook

R&R MOTORSPORTS

Welcome

Introduction p. 3

Schedule of Events p. 4

Trail Etiquette p. 5

Frequently Asked Questions..... p. 8

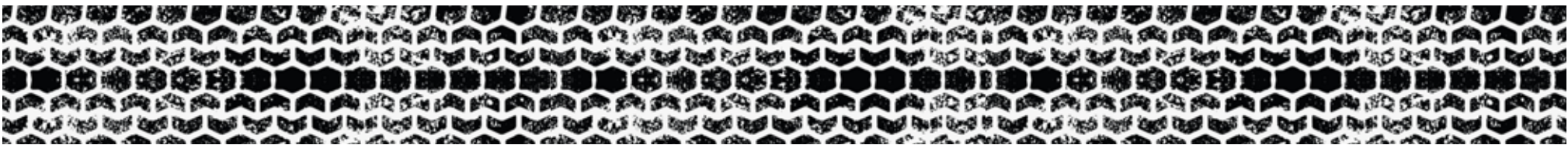
Trail Description..... p. 10-11

Trail Maps..... p. 12-13

Staging Area p. 12-13

Amenities in Rangely p. 15

Poker Run p. 17



Introduction

Welcome to our annual Rangely OHV Adventure Rally! We are excited to share our trails with you, and we know you will not be disappointed. While you are here, enjoy all that Rangely has to offer... We have a busy schedule of events, but hopefully you will make time to check out our downtown, parks, and other recreational activities.

Want to visit Rangely again? Rangely is a great place to be all year long! During the summer months join us as we host OHV events, Rally Car Races, concerts in The TANK, and 4th of July celebrations. Fishing, biking, hiking, and exploring prehistoric rock art from over 11,000 years ago are all favorite activities for visitors and locals alike. Fall brings us to the ever-popular hunting seasons and Septemberfest.

For more information contact the Rangely Area Chamber of Commerce by phone 970.675.5290, online at www.RangelyChamber.com, or in person at 255 East Main Street, Suite A.

Schedule of Events

Friday

7:00 am – 8:00 am	Breakfast	EEC Building
7:00 am – 9:00 am	Registration/ Check-in/ Trail Sign-up	EEC Building
8:00 am – 8:30 am	Riders Meeting	EEC Building
8:30 am – 4:30 pm	Guided Rides Texas Mountain Big Ridge Loop East Douglas Cottonwood Loop Chase Draw Cathedral Bluffs Loop Wild Horse Loop	EEC Building Map Page
5:00 pm – 6:30 pm	Shrimp Boil	Elks Park
6:30 pm	Night Ride to Kenney Reservoir	EEC Building

Saturday

7:00 am – 8:00 am	Breakfast	EEC Building
7:00 am – 9:00 am	Registration/ Check-in/ Trail Sign-up	EEC Building
8:30 am – 4:00 pm	Guided Rides Texas Mountain Big Ridge Loop East Douglas Cottonwood Loop Chase Draw Cathedral Bluffs Loop Wild Horse Loop	EEC Building Map Page
4:00 pm – 6:00 pm	OHV Poker Run Hosted by: Rio Blanco Search and rescue	EEC Building to Columbine Park
6:00 pm	Dinner	Columbine Park
7:00 pm	OHV Rodeo	Columbine Park

Sunday

All Day	Open Riding	EEC Building
---------	-------------	--------------

Car washes will be provided each day by various groups in town at the Rangely Fire Hall

Trail Etiquette

When riding in areas with special status plants, no stopping will be allowed to protect sensitive resources from inadvertent damage when pulling off of a road.

All motorized travel is limited to existing roads and trails, the trails are indicated in blue on the map.

Wild horses are protected by Federal law, and harassment of wild horses is prohibited.

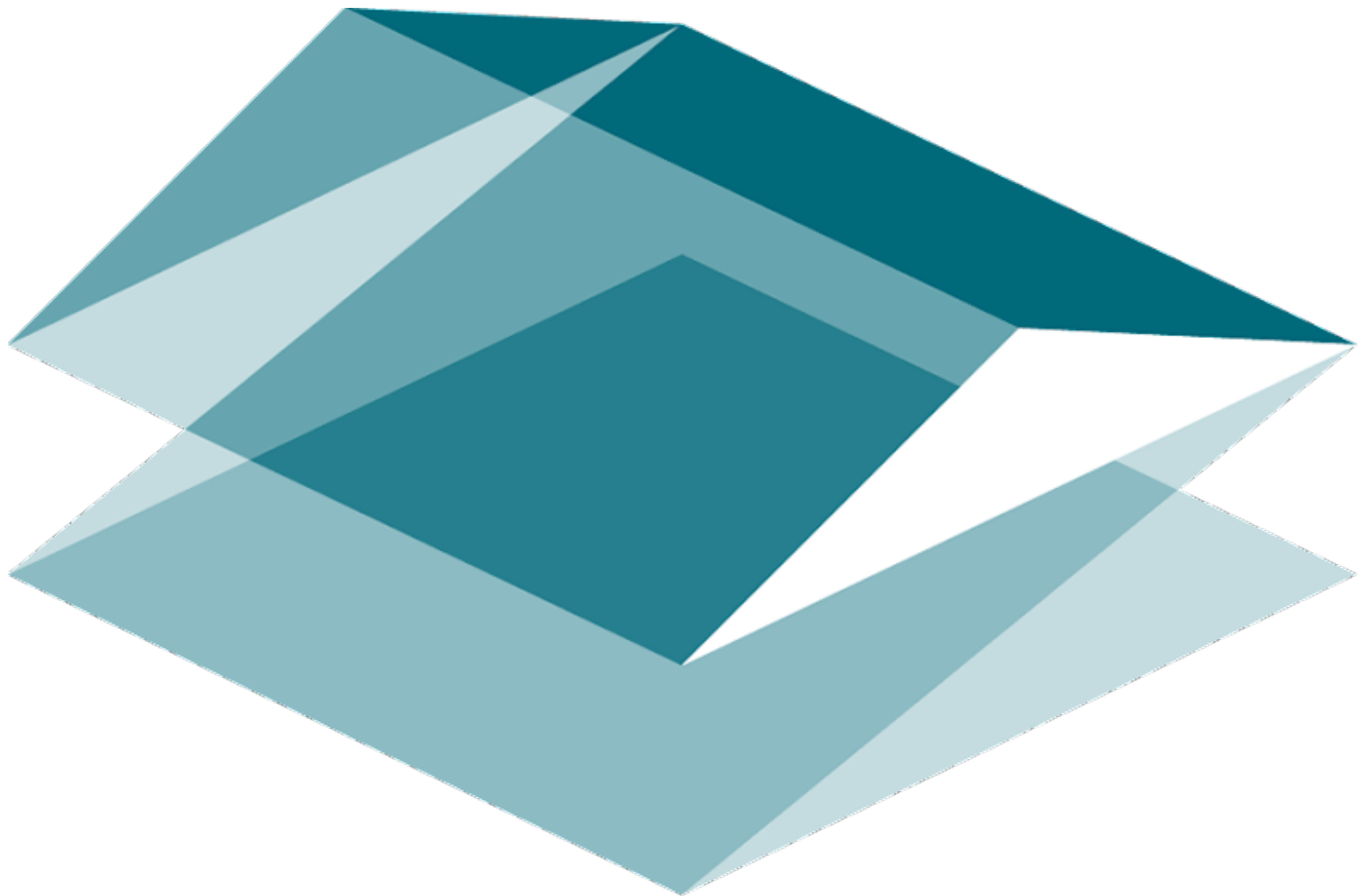
Participants must stay 100 feet away from wild horses.

Do not feed or try to attract any wild horses towards you.

Keep dogs under control so they do not disrupt or chase wild horses.

Participants cannot disrupt or collect artifacts from a known archaeological site at any time.

Prosecution for knowingly disrupting archaeological sites is possible.



chfa®

*Silver
Sage*

**RV
PARK**

- LOCATED ON MAIN STREET
- BIG RIG FRIENDLY (90' SITES)
- PET FRIENDLY
- 20-30-50-AMP
- FULL HOOKUPS
- GRAVEL SITES
- PAVED ROADS



Contact Us

www.silversagerv.com / 970-675-2259

A promotional graphic for Vengeance Powersports. The background is a distressed, cracked American flag. The word "VENGEANCE" is written in large, bold, black capital letters across the top. Below it, "POWERSPORTS" is written in smaller, black capital letters. A white rectangular box contains the phone number "435-828-8437". At the bottom, a black rectangular box contains the text "Parts • Service • Accessories" in white.

VENGEANCE

POWERSPORTS

435-828-8437

Parts • Service • Accessories

Rangely Rules Of The Road

Use safe driving practices

Riders are only permitted to cross State Highway 64/Main Street and State Highway 139

All OHVs must be equipped with the following:

- At least one headlamp
- At least one red tail lamp
- Functioning braking system
- Spark arrester
- Muffler

Current Colorado Parks and Wildlife registration sticker.
Which can be paid for with **CASH** at Rangely True Value

Know the speed limits:

- 15 mph in Rangely, unless lesser speed limit designated by signage
- 35 mph on County Roads, unless lesser speed limit designated by signage

OHV operators must have liability insurance coverage:
\$25,000 per person, \$50,000 per accident and \$15,000 property damage

Drivers in Rangely must have a valid Driver License

On County Roads, drivers over the age of 10 must be operating under the supervision of a person with a valid Driver License...Riders under 10 shall not operate an OHV

In Rangely city limits, OHV drivers cannot allow a person to ride in a way that is dangerous or that may interfere with the operation of the OHV

All or part of this operation is conducted on Public Lands under special permits from the U.S. Bureau of Land Management



Frequently Asked Questions

First time riding in Rangely?

Welcome! We are so happy you are here, and we hope you enjoy our trails as much as we do. Rangely is proud to be an “OHV friendly community” and we welcome you to ride your OHV on town streets and designated county roads. The ROAR trails offer over 300 miles of interconnecting loops and trails. Riders can experience all levels of difficulty, terrain, and scenery. Rangely is one of the premier places for your next OHV and motorcycle adventure.

What are the rules for riding an OHV on town streets and county roads?

Use safe driving practices. Riders are only permitted to cross State Highway 64/Main Street and State Highway 139. All OHVs must be equipped with the following:

- o At least one headlamp
- o At least one red tail lamp
- o Functioning braking system
- o Spark arrester
- o Muffler
- o Current Colorado Parks and Wildlife registration sticker

Know the speed limits:

- o 15 mph in Rangely, unless lesser speed limit designated by signage
- o 35 mph on County Roads, unless lesser speed limit designated by signage

OHV operators must have liability insurance coverage:\$25,000 per person, \$50,000 per accident and \$15,000 property damage. Drivers in Rangely must have a valid Driver License. On County Roads, drivers over the age of 10 must be operating under the supervision of a person with a valid Driver License...Riders under 10 shall not operate an OHV. In Rangely city limits OHV drivers cannot allow a person to ride in a way that is dangerous or that may interfere with the operation of the OHV.

What safety equipment is required?

Riders are not required to wear helmets and other safety gear but, it is highly encouraged. We want everyone to have a fun and safe ride. Safety flags on each OHV are recommended for visibility. A limited amount of safety flags are available for sale at registration.

What OHV's are allowed?

We welcome all OHVs. The ROAR Trails are for usage with 4-wheelers, side-by-sides, motorcycles, and full-sized vehicles.

Do I have to go on a guided ride, or can I go exploring on my own?

Riders are more than welcome to ride the trails by themselves. Guided rides are provided to orient those unfamiliar with the trails. Sign-up is limited to ten OHVs per guided group. Each ride may have multiple groups.

What should I take on my ride?

Be sure to bring plenty of gas, rain gear, warm clothing, bug repellent, sunscreen, lunch, plenty to drink, plus other important personal items you may need. You won't want to forget a camera you will encounter many beautiful sights and you will want pictures to remind you of your trip.

Am I required to have a Colorado OHV registration Sticker?

Yes. All riders will need to have a current OHV registration sticker. Riders not from Colorado can purchase their registration sticker with CASH at Rangely True Value (105 W. Main Street) for \$25.25. Both Colorado residents and nonresidents can also purchase a registration sticker at the Colorado Parks and Wildlife office (73485 HWY 64, Meeker, Colorado) or online at cpw.state.co.us/buyapply/pages/registrationsOHV.aspx

Is Lunch Provided?

Lunch is not provided on the guided rides, but there will be an opportunity to purchase a sack lunch for Friday and Saturday rides. Lunch signup sheets will be available on the Eventbrite or at the registration table located at the event base camp (Rangely Automotive Museum).

Where is the ROAR Base Camp?

Base camp is located at the Rangely EEC Building, 402 West Main Street, Rangely, CO.

Is it too late for me to sign up for guided rides?

No. You can sign-up for rides on the day of the guided ride, but keep in mind each space is limited and only ten spots are available for each guided ride.

WARN AXON AND VRX POWERSPORTS WINCHES



**RE-ENGINEERED FROM THE GROUND UP, BACKED
BY DECADES OF EXPERIENCE AND RELIABILITY.**








CONSIDER THE BAR RESET.

The potent mixture of adrenaline, determination, and pride has been getting mankind into trouble for decades. WARN® has always been at the head of the class when it comes to bailing them out. Now, the all-new AXON™ and VRX™ have rewritten the rules for high-performance winches, with game changing technologies and the bomb-proof reliability only WARN can offer.

AXON AND VRX: THE NEW GENERATION OF PREMIUM POWERSPORTS WINCHES.

Guided Ride

Trail Descriptions

Night Ride To Kenney Reservoir		
Riders will leave following the Shrimp Boil at Elk's Park. Sections of the trail Provide ridge and mesa views of the reservoir and the Rangely valley. The lake features beaches, picnic tables, and fire rings. Brig marshmallows to roast at the campfire by the lake.	 	Route: CR 23A, CR 46, BLM 1737, BLM 1735, BLM 1737, CR46, CR 23A Ride: 19 Miles
Texas Mountain (Oil Springs)		
Enjoy a mountain ride that offers views of the gorgeous, vast valley. A wildfire on Texas Mountain a few years ago left behind a regenerated landscape and great views of the valley. Dropping down into Oil Springs there is a steep section of trail.	 	Route: CR 116, CR 109, BLM 1064, BLM 1210, BLM 1063, BLM 1062, CR 109, CR 116 Ride: 40 Miles
Big Ridge Loop		
Ride through steep draws, enjoying tight turns and narrow trails, before popping up on Big Ridge to enjoy beautiful vistas.		Route: CR 104, BLM 1040, BLM 1042, CR 104 Ride: 30 Miles
East Douglas (Rope Canyon)		
This ride included high desert and mountain terrain. Enjoy the spectacular views from Brushy Point and the ride along Cathedral Bluffs. Travel switchbacks and keep your eyes peeled for evidence of Fremont and Ute Cultures.	 	Route: BLM 1205, BLM 1244, BLM 1245, BLM 1246, CR 27, BLM 1250, BLM 1228, CR 128, CR 27, BLM 1242, BLM 1245, BLM 1244, BLM 1205 Ride: 48 Miles

Cottonwood Loop

Enjoy windy sections of trail with views from the top of West Four Mile Draw. Expect to ride high desert and mountain terrain. This ride includes two large loops.



Route: CR 2 BLM 1071, BLM 1070, CR 23, CR 113, BLM 1045, CR 23, BLM 1072, CR 2
Ride: 58 Miles

Chase Draw

This ride features one of the most impressive scenic overlooks of the Rangely Area, including part of the Dead Dog Fire that occurred in the spring of 2017. Enjoy slick rock riding, dry creek crossings, and riding along a creek bottom.



Route: CR 23A, CR 46, BLM 1737, BLM 1736, CR 96, CR 65, BLM 1739, CR 96, BLM 1736, BLM 1737, CR 46, CR 23A
Ride: 25 Miles

Cathedral Bluffs Loop

A long and fast paced ride that will take you over the highest mountains in the area. Follow the rim of the Cathedral Bluffs all the way to the Clyde Dillion Memorial. This wildlife filled area hosts large herds of Elk, Deer, and some breathtaking views!



Route: CR 122, CR 103, CR 70, CR 91, CR 24X, CR 122
Ride: 50 Miles

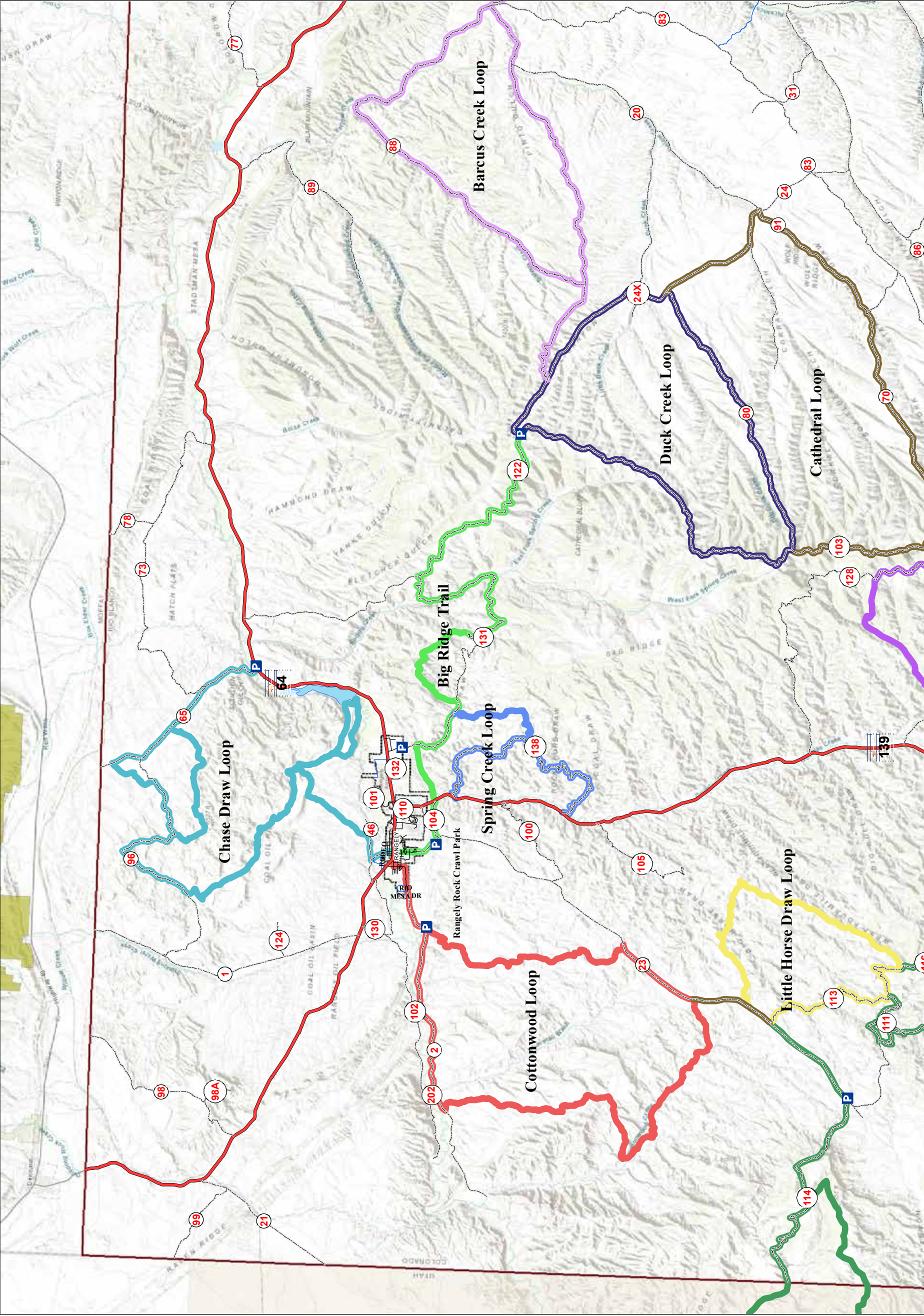
Wild Horse Loop (Duck Creek & Cathedral Bluffs)

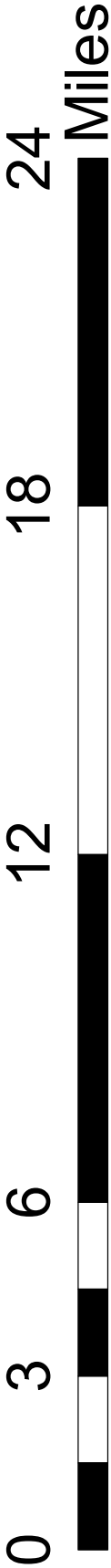
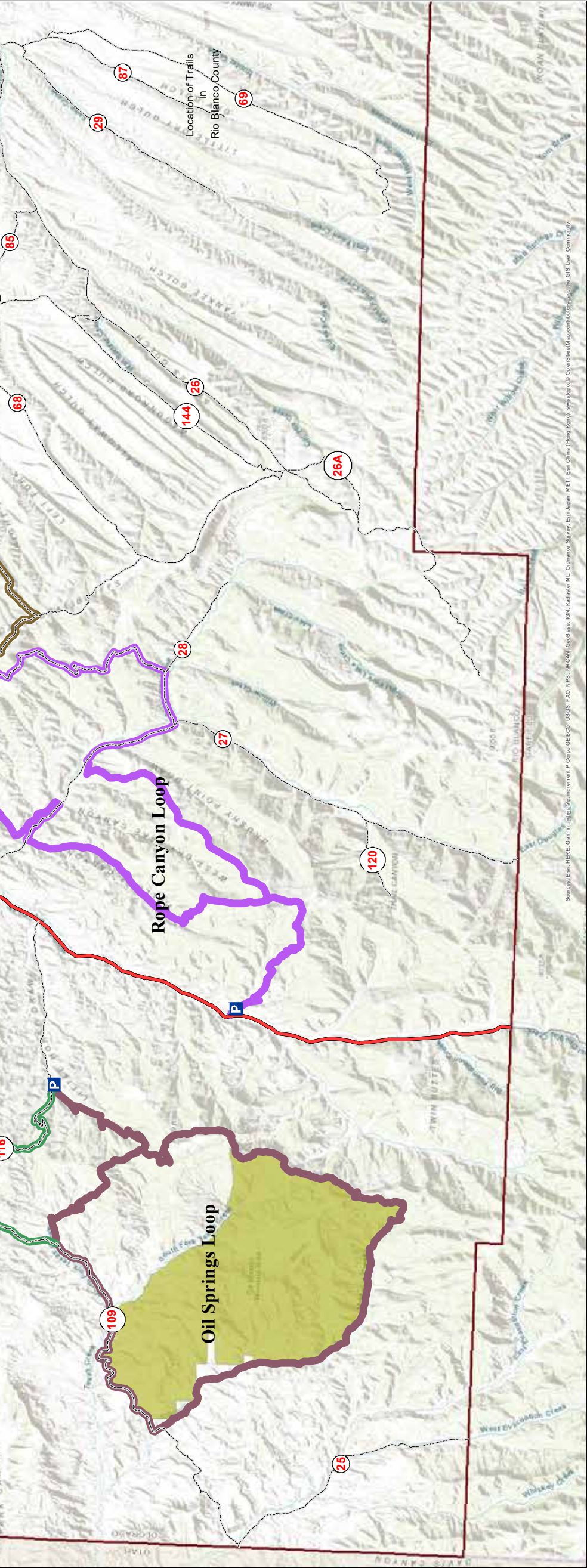
A great opportunity to see wild horses, this ride will take you down into the valleys and back up on top of some great mountain desert. A faster paced ride that covers a large area, and hopefully, an increased chance to see some wild horses or other resident wildlife!



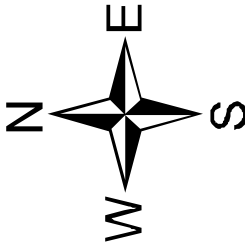
Route: CR 24X, CR 122, CR 88, CR 122, CR 24X
Ride: 40 Miles

Wagon Wheel Trail System





These maps and GIS products are mere representations of the land, features, lines, corners and points shown. These maps and GIS products are not intended to and do not replace actual legal surveys, ownership, legal descriptions and other information contained in official government records. Independent verification of all data contained herein should be obtained by any user of the map or GIS products. Rio Blanco County makes no warranty as to the accuracy of property boundaries, or placement, or location of any map features. Any user of these map or GIS products accepts same AS IS, WITH ALL FAULTS, and assumes all responsibility for the use thereof.



Legend	
OHV TRAIL	
BARCUS CREEK LOOP	
BIG RIDGE TRAIL	
CATHEDRAL LOOP	
CHASE DRAW LOOP	
COTTONWOOD LOOP	
DUCK CREEK LOOP	
LITTLE HORSE DRAW LOOP	
OHV TRAIL	
OIL SPRINGS LOOP	
ROPE CANYON LOOP	
SPRING CREEK LOOP	



RANGELY AUTO PARTS
NATIONALLY KNOWN. LOCALLY OWNED.



WHATEVER ROAD YOU TAKE
OFF OR ON



Get Your Stitch On

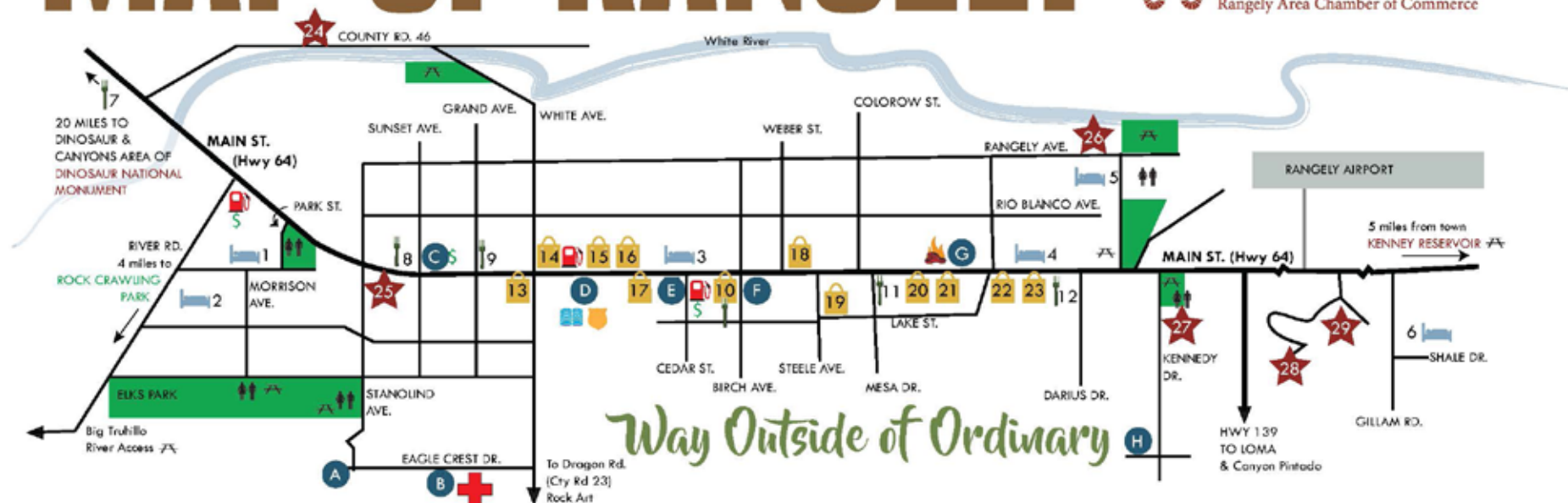
We embroidery on virtually everything, and also do screen printing; make your own logo or use an existing logo.

Custom Embroidery & Screen Printing

(970) 629-3745

Visit our Facebook page - Get Your Stitch On Inc.

MAP OF RANGELY



LODGING

1. Blue Mountain Inn & Suites
37 Park St. | 675-8888
2. Ellingwood Park, LLC
505 W Main St. | 970-250-1157
3. Silver Sage RV & MH Park
314 E Main St. | 675-2269
4. Moosehead Lodge
856 E Main St. | 629-0561
5. Rangely Camper Park
924 E Main St. | 675-8211
6. Buck'n'Bull RV Park
2811 E Main St. | 675-8335

DINING

7. BedRock Depot
7. Christie's Liquors
7. Highway Bar & Grill
8. El Agave Mexican Restaurant
302 W. Main St. | 675-8870
9. Main Street Cafe
707 E. Main St. | 675-2751

10. California Wok

- 321 E Main St. | 675-5888
11. Main Street Pub
707 E. Main St. | 675-2751
12. Giovanni's Italian Grill
855 E Main St. | 675-2670

SHOPPING

13. True Value
105 W Main St. | 675-2454
14. Conoco
102 E Main St. | 675-2090
15. Professional Touch
112 E Main St. | 675-2025
16. NAPA
214 E Main St. | 675-5051
17. Ducey's Electric
22 E Main St. | 675-8368
10. The Salon
321 E Main St. | 675-5000
10. Pinyon Tree Liquor
321 E Main St. | 675-2828
18. EMC Plumbing
510 E Main St. | 675-2572

19. Too Old Antiques / Laundry

- 114 Steele Street | 433-8888
20. Sweetbriar
713 E Main St. | 675-5353
21. Rangely Liquor Store
719 E Main St. | 675-8596
22. EZ Auto Mechanics
807 E Main St. | 675-8000
23. Nichols Store
825 E Main St. | 675-8852
- ATTRACTIONS/GIFT SHOPS**
24. The TANK - Center for Sonic Arts
233 Cty Rd. 46 | 368-2657
25. Rangely Automotive Museum
128 S Stanolind Ave. | 675-8233
26. Rangely Community Gardens
855 E. Rangely Ave.
27. Rangely Outdoor Museum
200 Kennedy Ave. | 675-2612
28. Cedar Ridges Golf Course
502 Cty Rd. 108 | 675-8403
29. Columbine Park Fairgrounds
2101 E Main St. | (970) 942-3207

INFORMATION

- A. WRB Recreation Center
611 S Stanolind Ave. | 675-8211
- B. Rangely District Hospital
225 Eagle Crest St. | 675-5011
- C. Bank of the San Juans
222 W. Main St. | 675-8481
- D. Rangely Regional Library
109 E Main St. | 675-8811
- D. Town Hall
209 E Main St. | 675-8476
- D. Police Station
209 E Main St. | 675-8466
- E. Chamber of Commerce
Visitor's Center
255 E Main St. | 675-5290
- F. Post Office
104 S. Birch Ave. | 675-8655
- G. Rangely Rural Fire Dept.
115 Nichols Ave. | 675-5093
- H. Colo. NW Community College
500 Kennedy Dr. | (800) 562-1105

LOCALLY OWNED
& OPERATED



High Speed Internet

(970)878-4421

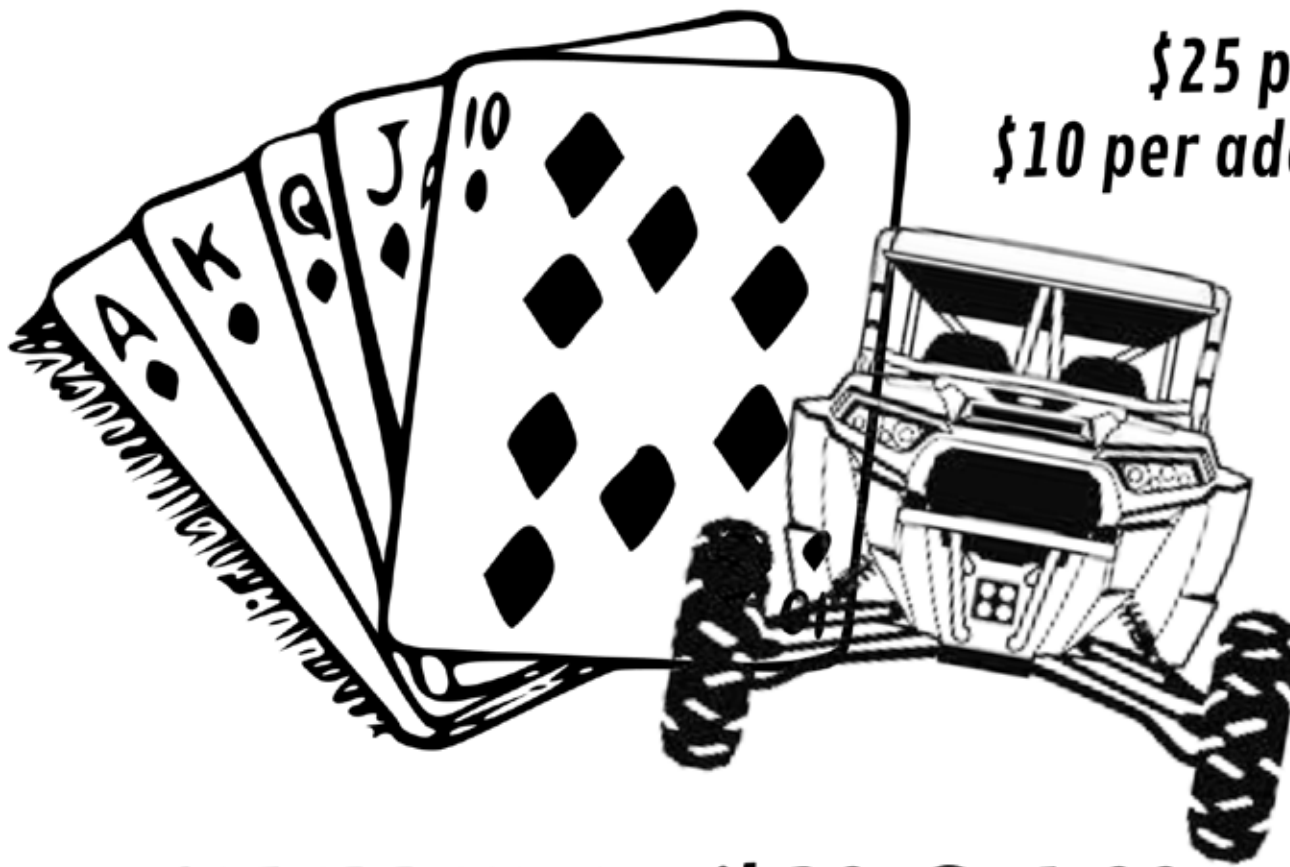
cimarrontelecommunications.com



Other Sponsors of ROAR



Rio Blanco County Search & Rescue OHV Poker Run



**\$25 per hand
\$10 per additional hand**

**SATURDAY, April 30 @ 4:00 pm
Starts at the EEC Building**

**1st Place - \$200
2nd Place - \$100
3rd Place - \$50**

**Enjoy a challenging ride out to the
Fairgrounds from Rangely.**

**Use of helmets eye protection, gloves, long
sleeves, long pants, and boots are strongly
encouraged.**

**High clearance 4X4 vehicles of all shapes and sizes welcome.
ALL VEHICLES MUST BE LICENSED OR REGISTERED**

Must be 18 years of age or older to purchase poker hands.



**For more info contact Bud
970.216.6209 or bud.ridings@rbc.us**



Rangely's Summer of Events

Elks Membership Mingle

April 9th @ 3:00pm

@ The Elks Club

CNCC Oral Cancer Walk

April 23rd @ 7:00 am

@ Elks Park

Rangely OHV Adventure Rally

April 28 - May 1 - All Day

@ The EEC Building

RDH Health Fair

May 14th 7:00-11:00 am

@ Rangely District Hospital

Best of The West Showdown

May 8th All Day

@ Columbine Park

AmtGuard

May 27 - 29 All Day

@ Camper Park

4th of July Celebrations

July 1 - 4 All Day

All around Rangely

W.E. Rock Western Series

July 9-10 All Day

Rangely Rock Crawling Park

Hill Climb

July 16-17 All Day

Around Rangely

Rally Colorado

July 23-24 All Day

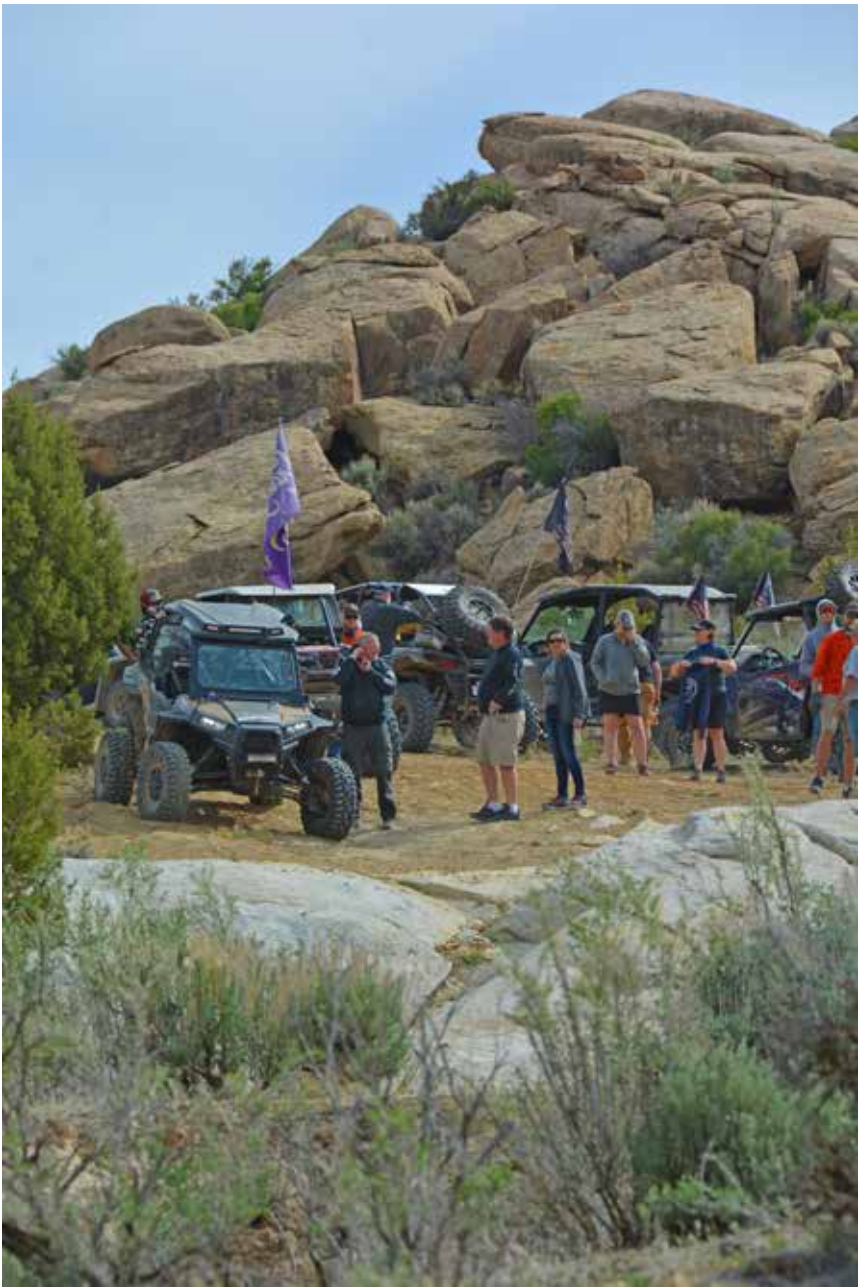
@ Elks Park

SeptemberFest

September 2 - 5 All Day

All around Rangely







Northwest AUTO GMC. SALES & SERVICE

Rio Blanco's #1 choice for
vehicle sales and service

Best used and new vehicle selection

Don't miss our TIRE price matching
event –
Extended through April

Contact us at:
970-878-5026



RANGELY

COLORADO



@townofrangely



townofrangely



@TownofRangelyCO