



CHAMBER
RANGELY AREA CHAMBER OF COMMERCE

THANK YOU ELITE SPONSORS & VENDORS

BLACK DIAMOND SPONSOR



chfa®

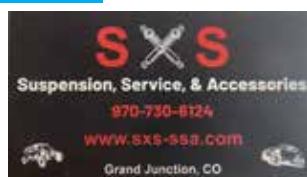
LEVEL 1 VENDORS



LEVEL 2 VENDORS



LEVEL 3 VENDOR



LEVEL 4 VENDORS



WELCOME

Introduction	X
Schedule of Events	X
Frequently Asked Questions	X
Trail Etiquette	X
Trail Descriptions	X
Trail Maps	X
Staging Areas	X
Amenities in Rangely	X
Poker Run	X

INTRODUCTION

Welcome to our annual Rangely OHV Adventure Rally! We are excited to share our trails with you, and we know you will not be disappointed. While you are here, enjoy all that Rangely has to offer... We have a busy schedule of events, but hopefully you will make time to check out our downtown, parks, and other recreational activities.

Want to visit Rangely again? Rangely is a great place to be all year long! During the summer months join us as we host OHV events, Rally Car Races, concerts in The TANK, and 4th of July celebrations. Fishing, biking, hiking, and exploring prehistoric rock art from over 11,000 years ago are all favorite activities for visitors and locals alike. Fall brings us to the ever-popular hunting seasons and Septemberfest.

For more information contact the Rangely Area Chamber of Commerce by phone 970.675.5290, online at www.RangelyChamber.com, or in person at 255 East Main Street, Suite A.



ELEVATE YOUR
ADVENTURE

FLOWER | EDIBLES | CARTRIDGES | CONCENTRATE | PRE-ROLLS | CBD | + MORE

Friendly Staff
Vast Selection
Order Online
Debit Payments Accepted
+ ATM On-Site

**ROCKY MOUNTAIN
CANNABIS**
ESTABLISHED 2009

420 Brontosaurus Blvd Dinosaur, CO | 21+ Only
Please Consume Responsibly

RockyMountainCannabis.com @RMCDispensaries

Please Consume Responsibly. For use only by adults 21 and older. [Image and text of cannabis] This product is not approved by the FDA for medical or recreational use. It is not intended to diagnose, treat, cure, or prevent any disease. [Image and text of cannabis] This product is not approved by the FDA for medical or recreational use. It is not intended to diagnose, treat, cure, or prevent any disease. [Image and text of cannabis] This product is not approved by the FDA for medical or recreational use. It is not intended to diagnose, treat, cure, or prevent any disease.

SCHEDULE OF EVENTS

Thursday, April 27

1:00-3:00pm & 4:00-6:00pm	Registration & OHV Expo	EEC Building
1:00-6:00pm	Open Riding	
4:00pm	Vendor & Food Truck Setup	EEC Buiding
5:30pm	Guide and Volunteer Meeting	EEC Buiding
6:00pm	Welcome Mixer	Coaches Corner Bar & Grill

Friday, April 28

All Day	OHV Expo	EEC Building
7:00-9:00am	Registration/Check-in/Trail Sign-up	EEC Building
8:00-8:30am	Rider's Meeting	EEC Buiding
8:30am-4:30pm	Guided Rides	
5:00-6:30pm	Shrimp Boil & Rider's Meeting	Elk's Park
6:30pm	Guided Night Ride to Kenney Reservoir - first group departs	Elk's Park

Saturday, April 29

All Day	OHV Expo	EEC Building
7:00-9:00am	Registration/Check-in/Trail Sign-up	EEC Building
8:00-8:30am	Rider's Meeting	EEC Buiding
8:30am-4:00pm	Guided Rides	
4:00-6:00pm	OHV Poker Run - RBC Search & Rescue	EEC Building to Columbine Park
6:00pm	Dinner	Columbine Park
7:00pm	OHV Rodeo - Free	Columbine Park

Sunday, April 30

All Day	Free Riding	
---------	-------------	--

Addresses

EEC Building - 402 W Main Street
Coaches Corner Bar & Grill - 35 Park Street
Elk's Park - 311 S Stanolind Ave
Columbine Park - 2101 E Main Street

RANGELY RULES OF THE ROAD

- Use safe driving practices
- Riders are only permitted to cross State Highway 64/Main Street and State Highway 139
- All OHVs must be equipped with the following:
 - At least one headlamp
 - At least one red tail lamp
 - Functioning braking system
 - Spark arrester
 - Muffler
- Current Colorado Parks and Wildlife registration sticker.
- Which can be paid for with CASH at Rangely True Value
- Know the speed limits:
 - 15 mph in Rangely, unless lesser speed limit designated by signage
 - 35 mph on County Roads, unless lesser speed limit designated by signage
- OHV operators must have liability insurance coverage:
 - \$25,000 per person, \$50,000 per accident and \$15,000 property damage
- Drivers in Rangely must have a valid Driver License
- On County Roads, drivers over the age of 10 must be operating under the supervision of a person with a valid Driver License...Riders under 10 shall not operate an OHV
- In Rangely city limits, OHV drivers cannot allow a person to ride in a way that is dangerous or that may interfere with the operation of the OHV
- All or part of this operation is conducted on Public Lands under special permits from the U.S. Bureau of Land Management

TRAIL ETIQUETTE

- When riding in areas with special status plants, no stopping will be allowed to protect sensitive resources from inadvertent damage when pulling off of a road.
- All motorized travel is limited to existing roads and trails, the trails are indicated in blue on the map.
- Wild horses are protected by Federal law, and harassment of wild horses is prohibited. Participants must stay 100 feet away from wild horses.
- Do not feed or try to attract any wild horses towards you.
- Keep dogs under control so they do not disrupt or chase wild horses.
- Participants cannot disrupt or collect artifacts from a known archaeological site at any time. Prosecution for knowingly disrupting archaeological sites is possible.

FREQUENTLY ASKED QUESTIONS

First time riding in Rangely?

Welcome! We are so happy you are here, and we hope you enjoy our trails as much as we do. Rangely is proud to be an "OHV friendly community" and we welcome you to ride your OHV on town streets and designated county roads. The ROAR trails offer over 300 miles of interconnecting loops and trails. Riders can experience all levels of difficulty, terrain, and scenery. Rangely is one of the premier places for your next OHV and motorcycle adventure.

What are the rules for riding an OHV on town streets and county roads?

Use safe driving practices. Riders are only permitted to cross State Highway 64/ Main Street and State Highway 139. All OHVs must be equipped with the following:

- At least one headlamp
- At least one red tail lamp
- Functioning braking system
- Spark arrester
- Muffler
- Current Colorado Parks and Wildlife registration sticker
- Know the speed limits:
 - 15 mph in Rangely, unless lesser speed limit designated by signage
 - 35 mph on County Roads, unless lesser speed limit designated by signage

OHV operators must have liability insurance coverage: \$25,000 per person, \$50,000 per accident and \$15,000 property damage. Drivers in Rangely must have a valid Driver License. On County Roads, drivers over the age of 10 must be operating under the supervision of a person with a valid Driver License...Riders under 10 shall not operate an OHV. In Rangely city limits OHV drivers cannot allow a person to ride in a way that is dangerous or that may interfere with the operation of the OHV.

What safety equipment is required?

Riders are not required to wear helmets and other safety gear but, it is highly encouraged. We want everyone to have a fun and safe ride. Safety flags on each OHV are recommended for visibility. A limited amount of safety flags are available for sale at registration.

What OHVs are allowed?

We welcome all OHVs. The ROAR Trails are for usage with 4-wheelers, side-by-sides, motorcycles, and full-sized vehicles.

Do I have to go on a guided ride, or can I go exploring on my own?

Riders are more than welcome to ride the trails by themselves. Guided rides are provided to orient those unfamiliar with the trails. Sign-up is limited to ten OHVs per guided group. Each ride may have multiple groups.

What should I take on my ride?

Be sure to bring plenty of gas, rain gear, warm clothing, bug repellent, sunscreen, lunch, plenty to drink, plus other important personal items you may need. You won't want to forget a camera you will encounter many beautiful sights and you will want pictures to remind you of your trip.

continued on next page

FREQUENTLY ASKED QUESTIONS CONTINUED

Am I required to have a Colorado OHV registration sticker?

Yes. All riders will need to have a current OHV registration sticker. Riders not from Colorado can purchase their registration sticker with CASH at Rangely True Value (105 W. Main Street) for \$25.25. Both Colorado residents and nonresidents can also purchase a registration sticker at the Colorado Parks and Wildlife office (73485 HWY 64, Meeker, Colorado) or online at cpw.state.co.us/buyapply/pages/registrationsOHV.aspx

Is Lunch Provided?

Lunch is not provided on the guided rides, but there will be an opportunity to purchase a sack lunch for Friday and Saturday rides from our local restaurants and food trucks.

Where is the ROAR Base Camp?

Base camp is located at the Rangely EEC Building, 402 West Main Street, Rangely, CO.

Is it too late for me to sign up for guided rides?

No. You can sign-up for rides on the day of the guided ride, but keep in mind each space is limited and only ten spots are available for each guided ride.

THANK YOU

What could we say that would ever come close enough to adequately thanking our Volunteers, Sponsors, Vendors, Committee Members, the Rangely Area Chamber of Commerce and the many people behind the scenes that help us pull off the 2023 Rangely OHV Adventure Rally? THANK YOU, THANK YOU, THANK YOU, FROM THE BOTTOM OF OUR HEARTS-THANK YOU!!!!

There is so much preparation, hard work and collaboration that goes into pulling off an event this size and this year you've outdone yourselves with a record number of registered vehicles and an even bigger Vendor/Expo than ever before. Our businesses, Chamber Members and residents are always amazing about welcoming our riders with the well known Rangely hospitality that we are fortunate enough to experience every day and it's a huge effort on everyone's part to be ready for the amount of visitors that find their way into our small little town. We recognize that none of this would be possible without all of your support and we are so grateful! Our love of the wide open spaces and miles upon miles of trails is infectious to the R.O.A.R. attendees and we've been fortunate enough to build long lasting relationships and wonderful memories. The OHV community is a tight knit group that is always willing to step in and help where needed and we know that our success this year is only because of your efforts to share this event with your friends and family. We can't wait to see so many familiar faces again and hope that we've been able to create a great experience for our riders.

Wagon Wheel Trail System

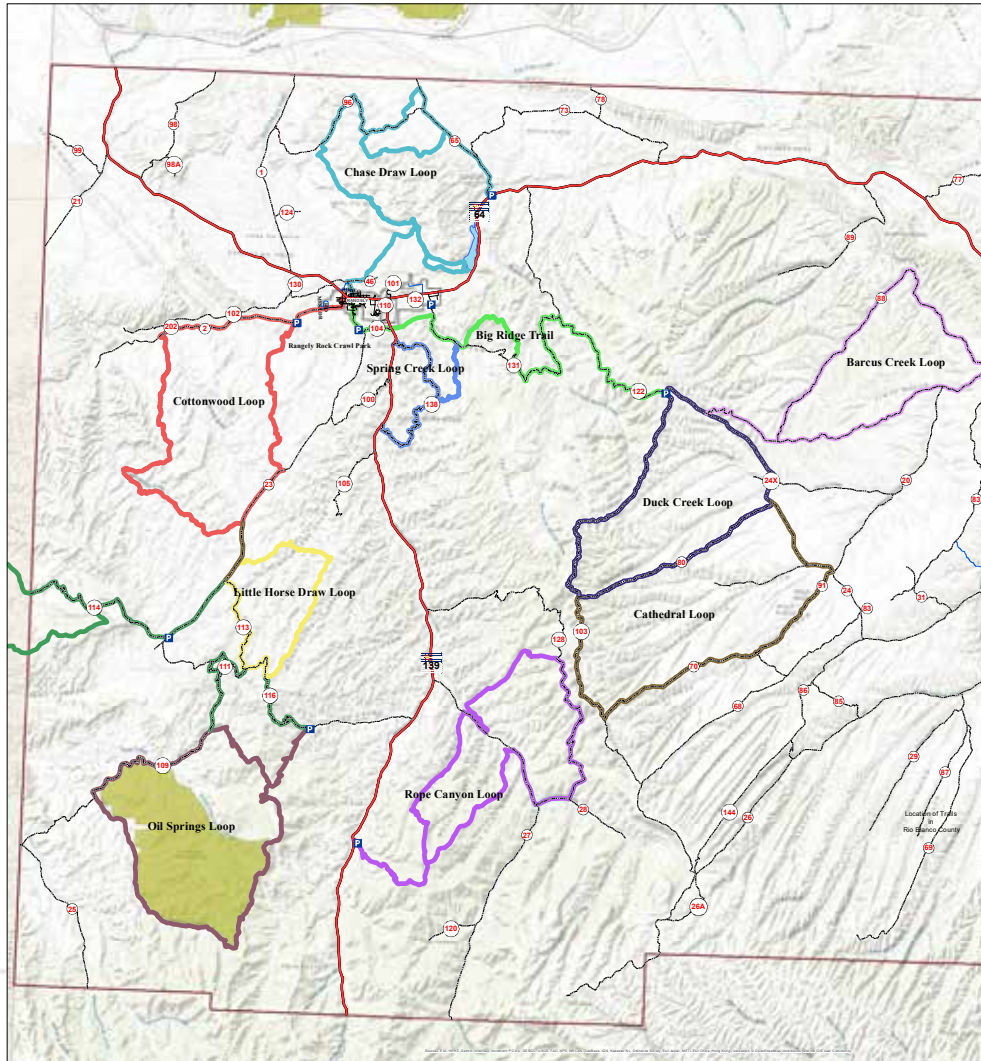
BIG RIDGE LOOP



Ride through steep draws, enjoying tight turns and narrow trails, before popping up on Big Ridge to enjoy beautiful vistas.

Route: CR 104, BLM 1040, BLM 1042, CR 104

Ride: 30 Miles



0 3 6 12 18 24 Miles

RANGELY
COLORADO



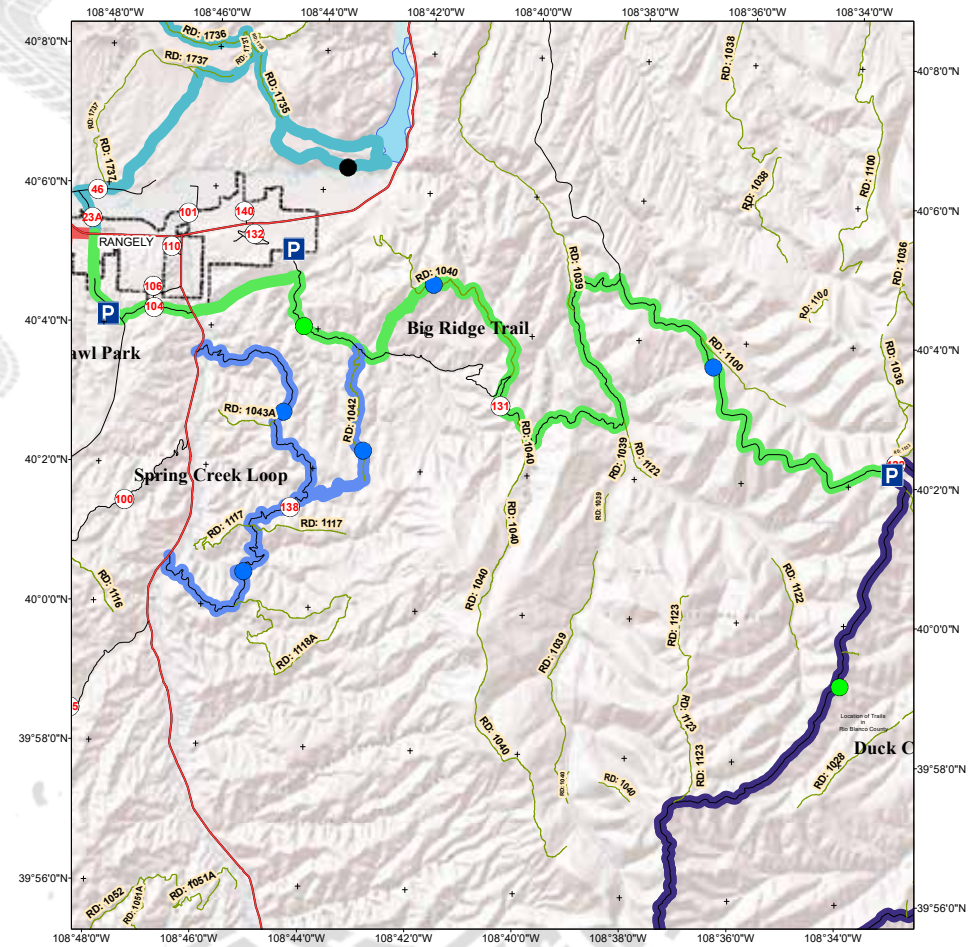
Legend

OHV TRAIL

- BARCUS CREEK LOOP
- BIG RIDGE TRAIL
- CATHEDRAL LOOP
- CHASE DRAW LOOP
- COTTONWOOD LOOP
- DUCK CREEK LOOP
- LITTLE HORSE DRAW LOOP
- OHV TRAIL
- OIL SPRINGS LOOP
- ROPE CANYON LOOP
- SPRING CREEK LOOP



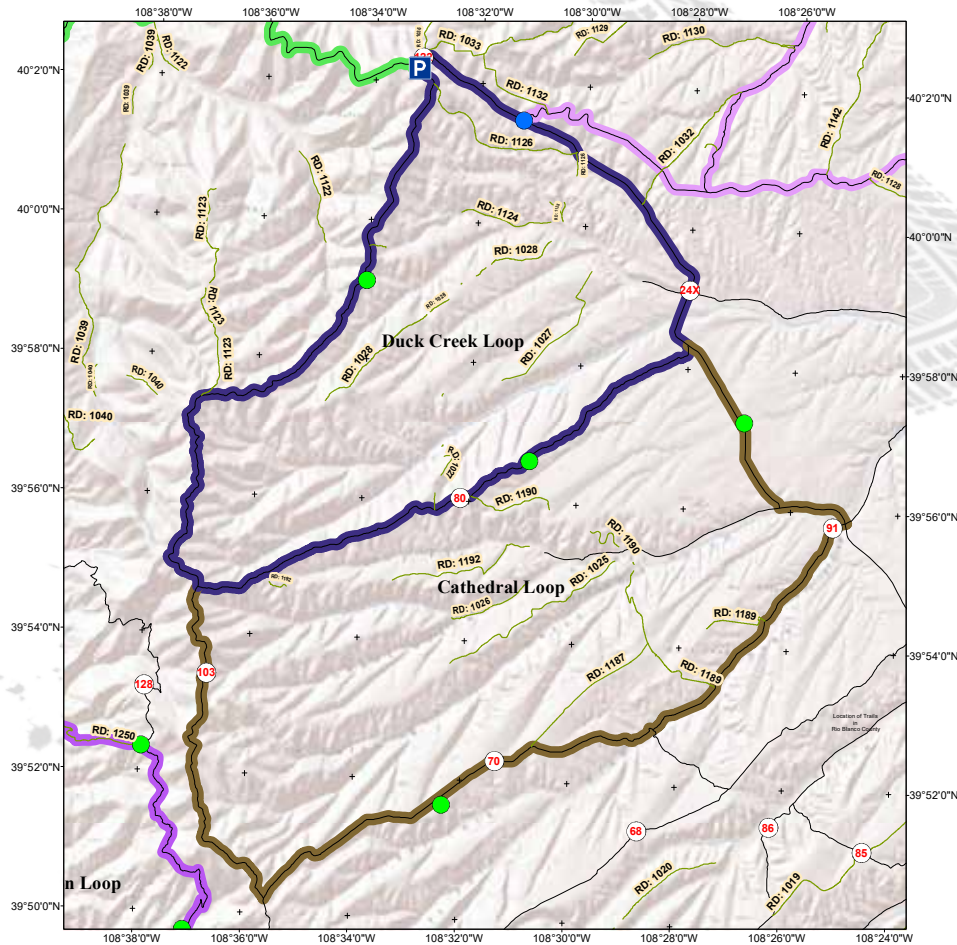
CHAMBER
RANGELY AREA CHAMBER OF COMMERCE



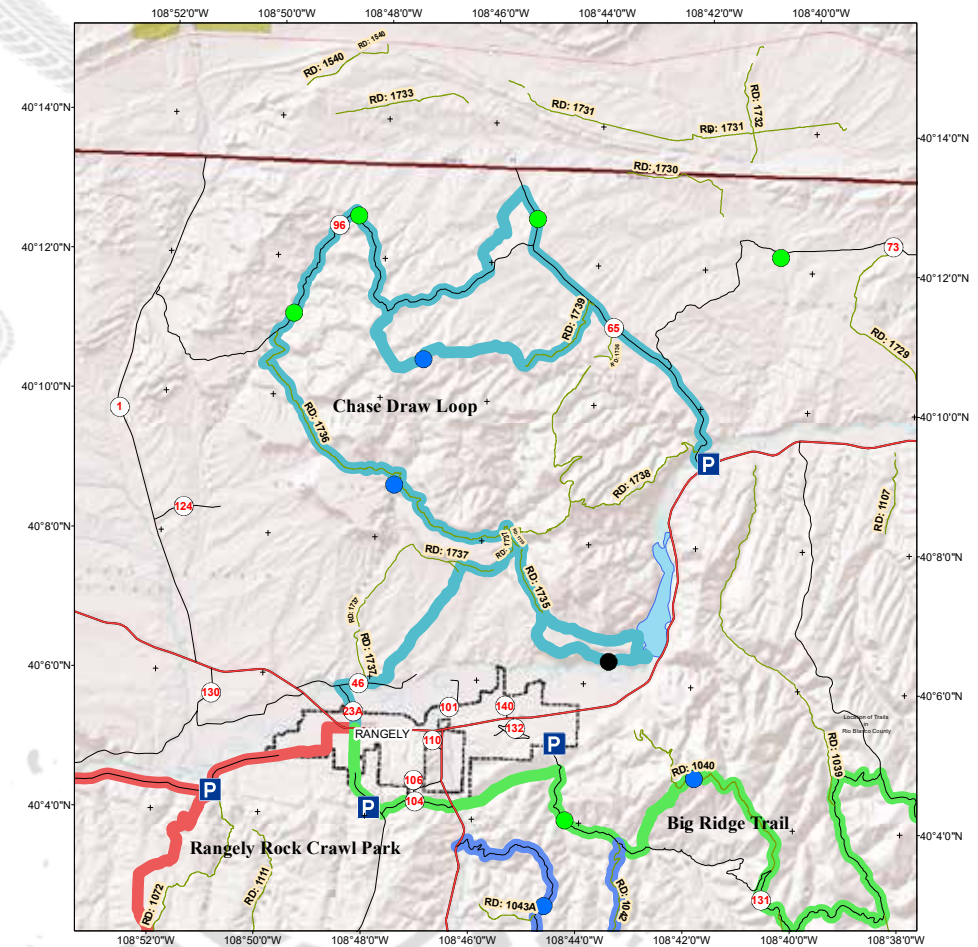
are mere representations of the land, ints shown. These maps and GIS 1 do not replace actual legal surveys, and other information contained in independent verification of all data ined by any user of the map or GIS kes no warranty as to the accuracy of int, or location of any map features, products accepts same AS IS, WITH responsibility for the use thereof.



Route: CR 122, CR 103, CR 70, CR 91, CR 24X, CR 122
Ride: 50 Miles



Route: CR 23A, CR 46, BLM 1737, BLM 1736, CR 96, CR 65, BLM 1739, CR 96,
BLM 1736, BLM 1737, CR 46, CR 23A
Ride: 25 Miles



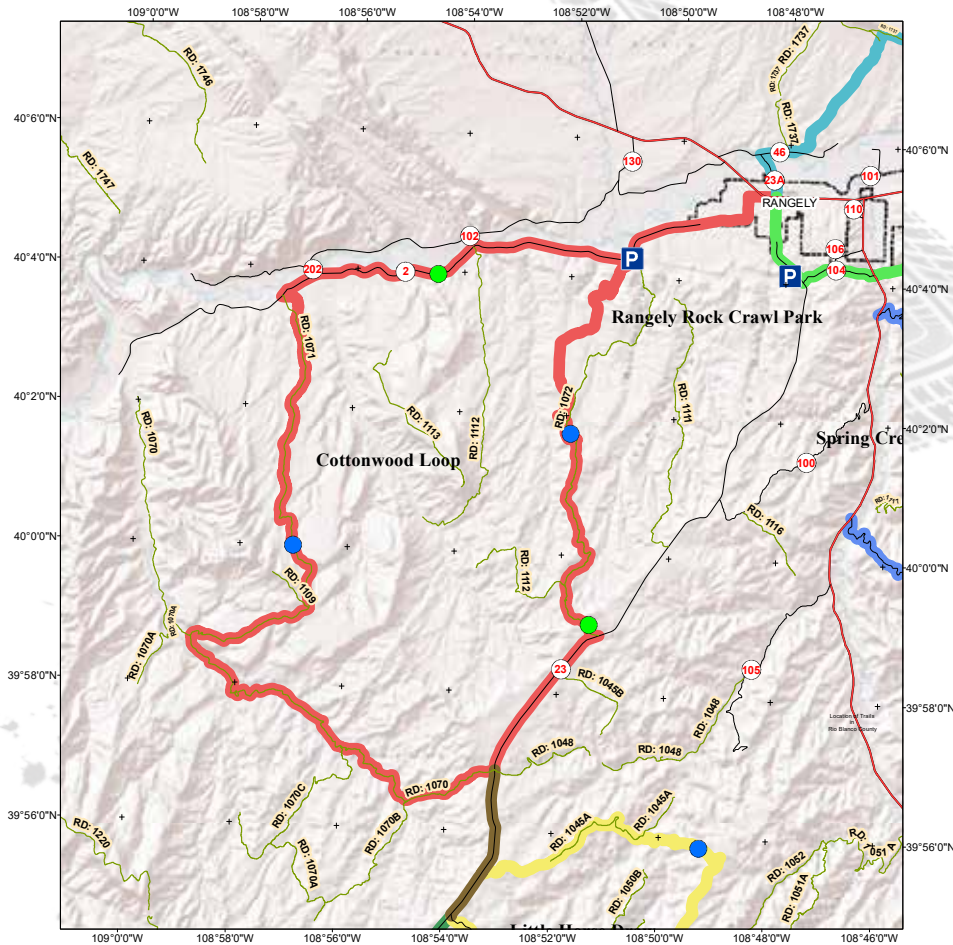
COTTONWOOD LOOP



Enjoy windy sections of trail with views from the top of West Four Mile Draw. Expect to ride high desert and mountain terrain. This ride includes two large loops.

Route: CR 2 BLM 1071, BLM 1070, CR 23, CR 113, BLM 1045, CR 23, BLM 1072, CR 2

Ride: 58 Miles



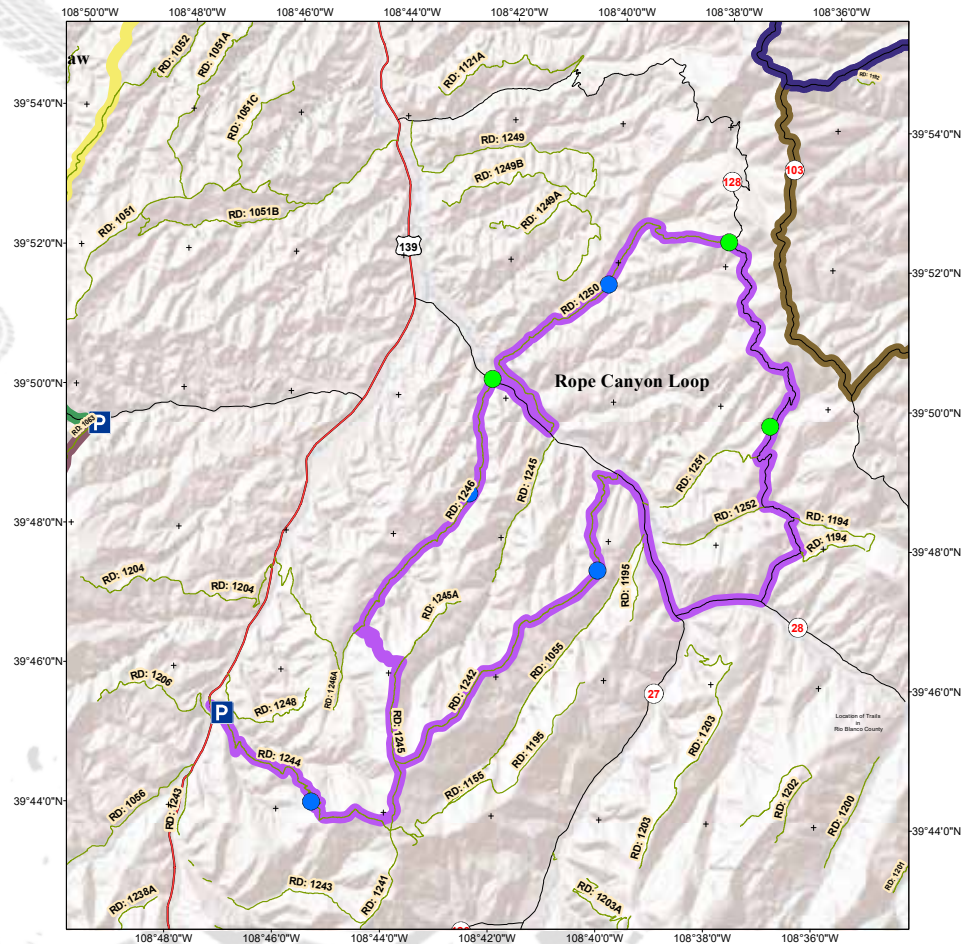
EAST DOUGLAS (ROPE CANYON)



This ride included high desert and mountain terrain. Enjoy the spectacular views from Brushy Point and the ride along Cathedral Bluffs. Travel switchbacks and keep your eyes peeled for evidence of Fremont and Ute Cultures.

Route: BLM 1205, BLM 1244, BLM 1245, BLM 1246, CR 27, BLM 1250, BLM 1228, CR 128, CR 27, BLM 1242, BLM 1245, BLM 1244, BLM 1205

Ride: 48 Miles

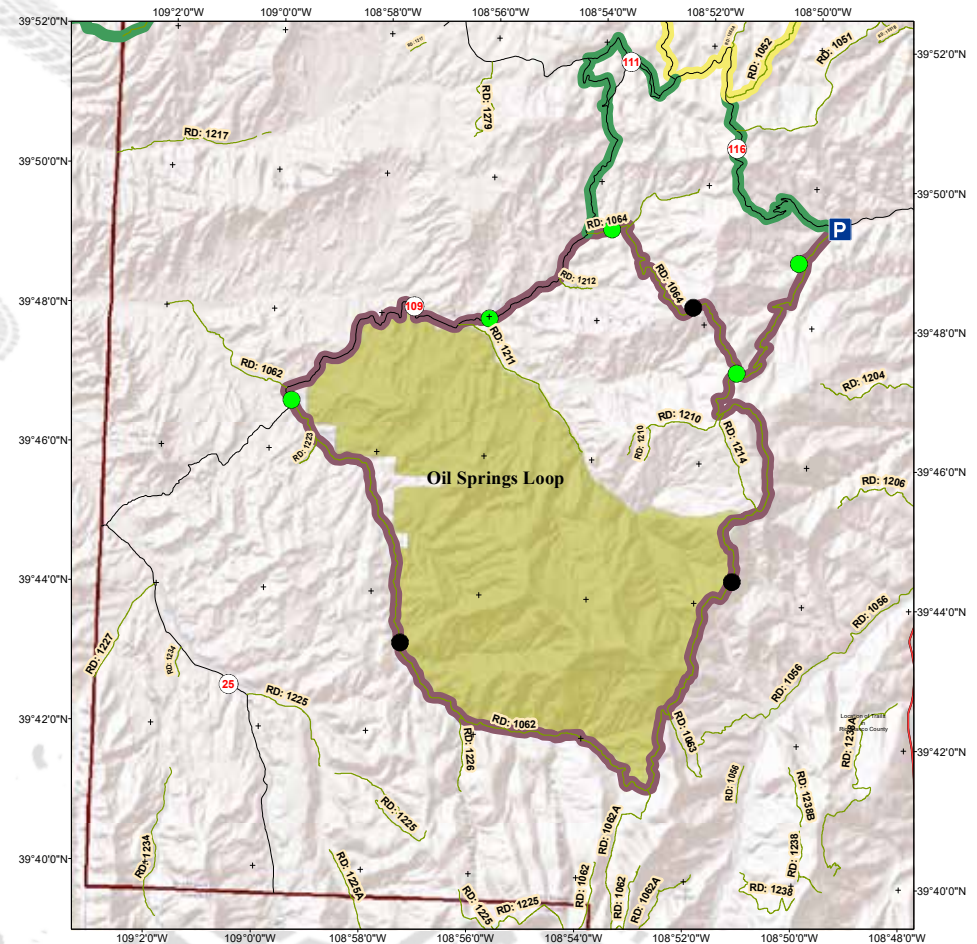




Route: CR 24X, CR 122, CR 88, CR 122, CR 24X
Ride: 40 Miles



Route: CR 116, CR 109, BLM 1064, BLM 1210, BLM 1063, BLM 1062, CR 109,
CR 116
Ride: 40 Miles



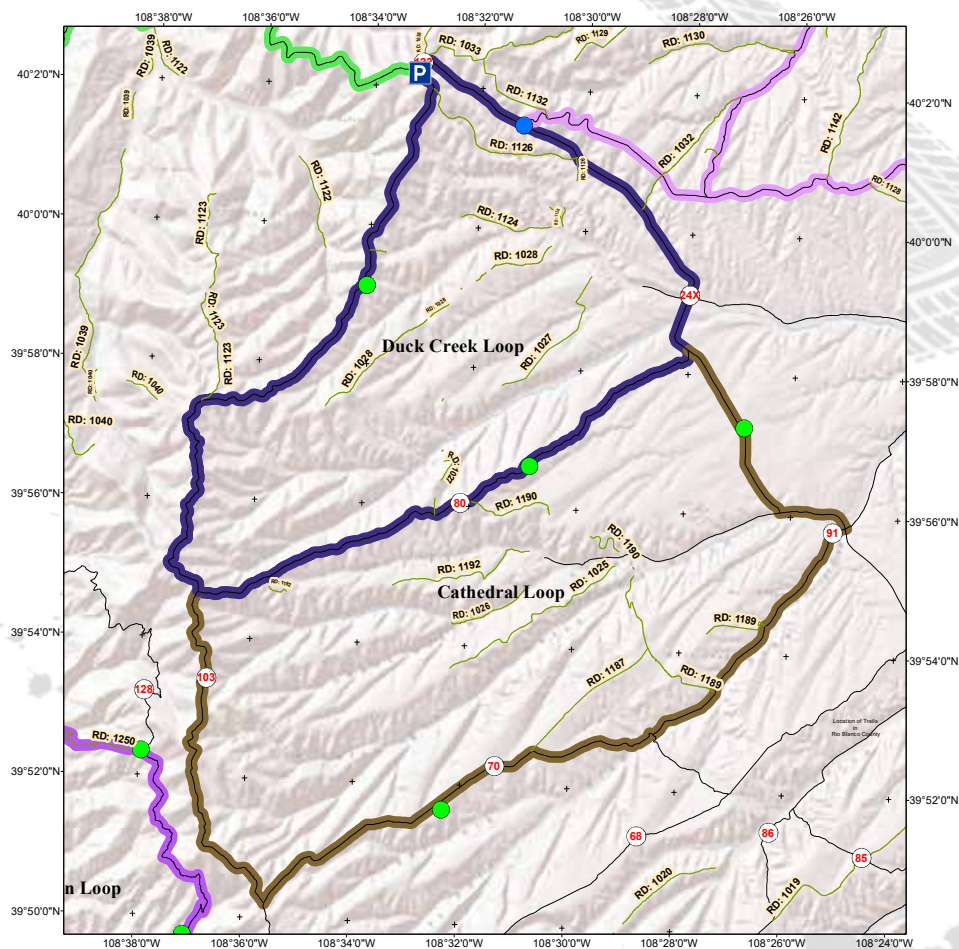
WILD HORSE LOOP (DUCK CREEK & CATHEDRAL BLUFFS)



A great opportunity to see wild horses, this ride will take you down into the valleys and back up on top of some great mountain desert. A faster paced ride that covers a large area, and hopefully, an increased chance to see some wild horses or other resident wildlife!

Route: CR 24X, CR 122, CR 88, CR 122, CR 24X

Ride: 40 Miles



When the winch recovery demands perfection, reach for Factor 55—the world's most secure and reliable winch rigging.

The Factor 55® Closed System Winching® technique uses rigging comprised entirely of closed-link hardware. Your traditional winch hook is upgraded to a patented Factor 55 ProLink®, FlatLink®, or UltraHook® winch line shackle mount, giving you the extra security and confidence needed to tackle the most demanding winch recoveries.



FACTOR 55

Precision engineered, tested, and made in the USA. Factor 55 products are trusted by off-roaders, first-responders, and military users worldwide.

LEARN MORE AT FACTOR55.COM

THANK YOU SPONSORS



THANK YOU SPONSORS



THANK YOU RAFFLE DONORS



GEAR UP AND GET OUT



If your goal over the weekend is to make it and not break it, then you need the right gear. WARN winches, bumpers, and accessories, like the all-new HUB Wireless Receiver, are designed, engineered, and tested to make it in—and make it out. Go prepared.

WINCHES • PLOWS • BUMPERS • WINCH ACCESSORIES • TRAIL GEAR

Go to warn.com to see our full line of products

