

# 2022 CENTRAL MINNESOTA TOUR OF MANUFACTURING

FEATURING  
**18** IN-PERSON TOURS  
DURING OCTOBER  
**9** ONGOING  
VIRTUAL TOURS

Great Manufacturing  
Articles Available

Tours and magazine content  
available at: [www.CMMAWorks.Org](http://www.CMMAWorks.Org)

**FREE**  
AND OPEN TO  
THE PUBLIC

Photo courtesy of Thermo-Tech

 **Thermo-Tech**  
Premium Windows and Doors

# 5 reasons to join

1. Education and networking
2. Workforce development
3. Legislative advocacy
4. Strategic partnerships
5. Member promotion

**Learn more  
Join today**

**CMMAworks.org**

info@MidwestManufacturers.com

800-654-5773



# CMMA

Central Minnesota Manufacturers Association

***Looking for educators and  
businesses to participate!***

A FREE tool to connect education and  
Central Minnesota industry  
for career exploration

## K12 Navigator.org

Aggregating work-based learning resources to integrate into classrooms  
or workforce development programs.

- Classroom speaker
- Company tour
- Job shadowing

- Youth apprenticeship
- Work-based training
- Student mentor

- Student technical project support
- Donate materials.



**CMMA**  
Central Minnesota Manufacturers Association

Funded by  
**Initiative**  
FOUNDATION



## October is Minnesota Manufacturing Month!

CMMA members, schools, partners, and friends,

Welcome to our second annual virtual magazine. We have grown significantly over the past year and are proud to highlight 26 organizations participating in our Tour of Manufacturing. Seventeen tours will be in-person, open house tours, while nine organizations are directing people to their website with the option of by-appointment tours. As you will see, tours cover numerous counties in central Minnesota, with the majority still being held in the St. Cloud area.

CMMA prides itself in strengthening Central Minnesota by giving back all proceeds raised during Manufacturing Month. Proceeds are used to develop school scholarships, youth exploration, and career pathways. In fact, this year high schools who tour at least one of our featured manufacturers in the magazine will be entered into a drawing for one \$1,000 and two \$500 Career and Technical Education (CTE) scholarships. Scholarships will be awarded to the schools for enhancing their manufacturing career pathways.



To strengthen youth career opportunities even further, CMMA is excited to announce the relaunch of its K12 Navigator program, which is a FREE tool to connect educators and businesses for high school student career exploration. We are also working with Career Solutions and Central Minnesota Jobs and Training Services, Inc. (CMJTS) to strengthen manufacturing career pathway opportunities.

### Why is manufacturing so important?

- Average annual wages for workers in manufacturing are \$60,585 in Central Minnesota, well above the region's overall average of \$51,012.
- Manufacturing accounts for almost 40,000 positions and is the second largest industry in our region.
- Manufacturers take pride of their safe, clean, high-tech environments with robotics/automation, artificial intelligence and 3D printing among the technologies being used.

Look inside these pages to learn about manufacturing in central Minnesota. Get a first-hand look at the high-tech world of manufacturing by attending an in-person or virtual tour. Tours are open to everyone, including businesses, communities, job seekers, and students.

Central Minnesota has a great depth and breadth of manufacturers creating meaningful products that positively impact our world. Come join us to see for yourself! Prepare to be amazed!

In service,

Les Engel, CMMA President  
#MNManufacturingMonth

*Cover photo: The image is of Sarah Zimmerman, Thermo-Tech Windows Cell Lead, loading vinyl window frame material into a 4-point fusion welder. See the Thermo-Tech information on page 32 of this magazine.*



# Your Success. Our Goal.

## Let Rotochopper Connect You to an Exciting Career in Manufacturing!

If you're a hard working individual that enjoys the satisfaction of a job well done, Rotochopper wants YOU to join our team! For over 30 years Rotochopper has been an industry leader in manufacturing heavy duty recycling and size reduction equipment and is looking for talented people to join our growing team.

Apply for one of our open positions by scanning the QR code, visiting [www.rotochopper.com/careers](http://www.rotochopper.com/careers), or submit your resume by email or mail. We look forward to hearing from you, our next employee!



**Rotochopper, Inc. Attn: Jobs**  
217 West St. PO Box 295, St. Martin, MN 56376  
[hr@rotochopper.com](mailto:hr@rotochopper.com)



**Our goal is your success in an exciting career  
in manufacturing at Rotochopper.**

### **Our manufacturing facility includes:**

- Automation / Robots / CNC Cutting Tables
- Ergonomics: Cranes / Positioners / Jigs
- Clean Work Environment
  - State of the Art Ventilation System
  - Fresh Air Helmets
- And So Much More

### **We offer all the standard benefits and more:**

- Employee Owned (ESOP) Company
- Health / Dental / Vision / Life Insurance
- Company Matched 401K
- Short & Long Term Disability
- Voluntary Paid Time Off
- Employee Appreciation Lunches & Events
- Employee Family Events
- Employee Gift Matching

**Join our Team: [www.rotochopper.com](http://www.rotochopper.com) • 320-548-3586**



# Join a global leader

Ichor is the leader in the design, engineering and manufacturing of critical fluid delivery subsystems and components for semiconductor capital equipment. Our products include the gas and chemical delivery subsystems that are key elements in the process tools used for commercial semiconductor device manufacturing.

We are strategically located to provide the highest level of customer service and support from our program management, sales, engineering, and executive management teams. Ichor is headquartered in Fremont, California, and we have manufacturing facilities in California, Oregon, Texas, Nevada, Minnesota, Singapore, Malaysia, Korea, Mexico, and the UK.

Our Precision Machining division includes two sites in Sauk Rapids, Minnesota, one in Osakis Minnesota and one in Nogales, Mexico. With over 700 employees, IPM's advanced machining capability provides custom machining, welding and assembly services, proprietary gas and fluid delivery systems and standard components meeting the stringent technical requirements of the semiconductor



industry.

Growth has been a constant and is expected to continue for years. Plans are in place to add factory space, acquire dozens of additional CNC machines, expand our class 100 cleanroom and weldroom to meet these demands. We are looking for positive, hardworking people who want to learn valuable technical skills and grow in a fast-paced, rewarding environment.



## Available positions include:

- Skilled Machinists
- TIG Welders
- Cleanroom and Assembly
- Shipping, Receiving and Materials Handlers
- Quality Inspectors, Quality Technicians and Quality Engineers
- Engineers – Manufacturing and R&D
- Planning and Procurement
- See all of our open positions: [www.IchorSystems.com/career](http://www.IchorSystems.com/career)

## Just some of the incredible things we offer our employees:

- 100% company paid Medical coverage for employees and their families
- Dental and Vision insurance
- Company paid Life/ADD/short-term and long-term disability
- HSA, FSA, Dependent care FSA
- 401k with company match
- Employee Stock Purchase Program (great way to invest in a red-hot industry!)
- Education Reimbursement – receive up to \$7500 per year towards education expenses
- Company discount programs
- Regular employee recognition and appreciation events
- Develop unique skills, continuous growth opportunities



**Check out our virtual tour or contact us for more information.**

**We can't wait to hear from you!**



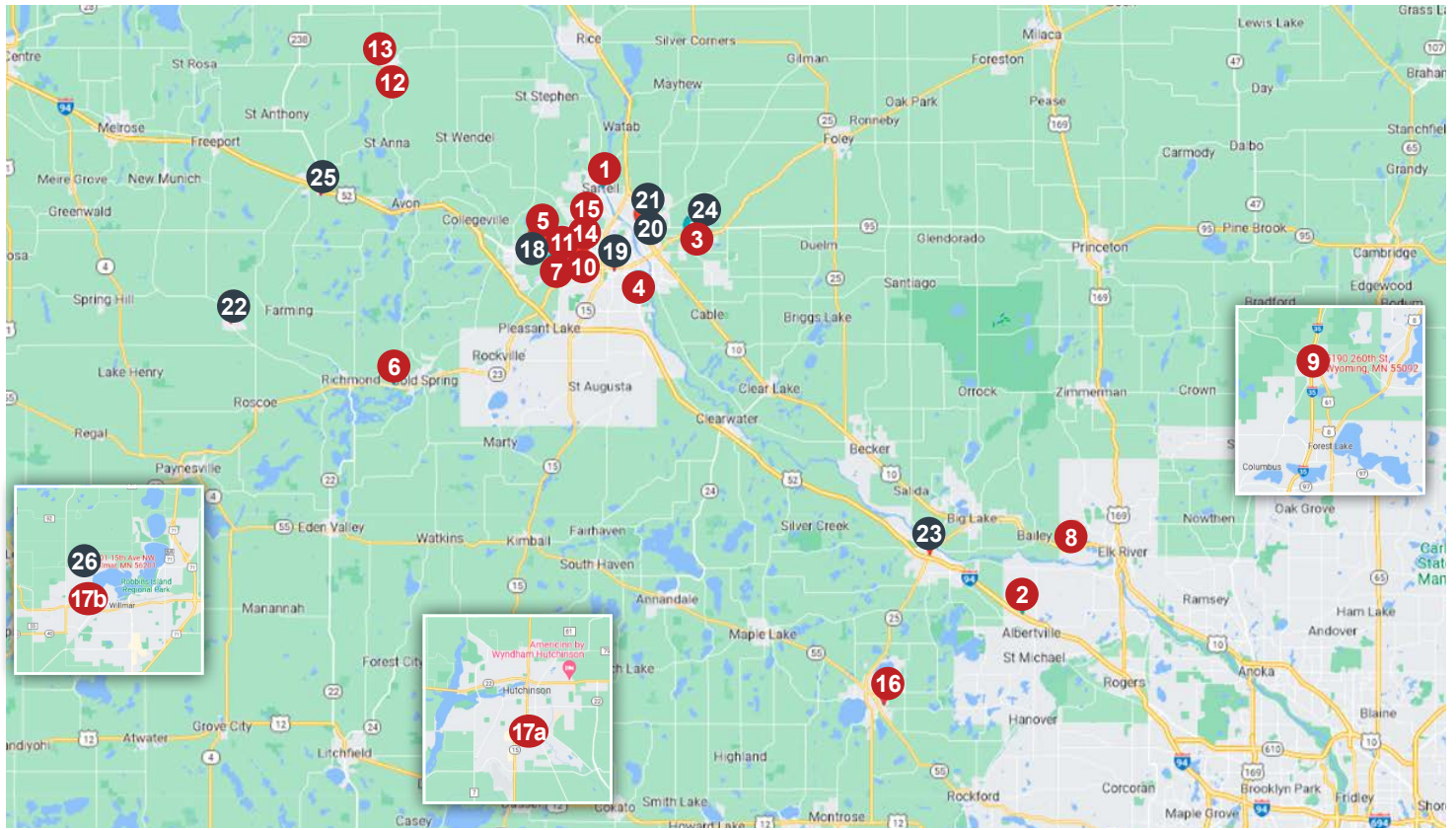
1003 Industrial Drive ■ Sauk Rapids, MN ■ 320.251.0390

509 3rd Ave East ■ Osakis, MN ■ 320.859.2070

[www.IchorSystems.com](http://www.IchorSystems.com)

# Table of Contents

Welcome.....	Page 3	On-the-job training article.....	Page 38
In-person Tours .....	Page 9-25	Ridgewater College article.....	Page 39
Virtual Tours.....	Page 26-34	CareerONE article.....	Page 40
LMI article.....	Page 36	Manufacturing Infographic .....	Page 41
SWIF article.....	Page 37	Thank You .....	Page 45



Tour #	Business	City	Date	Time
1.....	DeZURIK .....	Sartell .....	10/5/2022 .....	10am-12pm
2.....	Advanced Volumetric Alliance (AVA) .....	Albertville .....	10/6/2022 .....	9am, 11am, 1pm, 3pm
3.....	Geringhoff .....	St. Cloud.....	10/6/2022 .....	10am-12pm
4.....	Nova Flex.....	St. Cloud.....	10/6/2022 .....	11am-2pm
5.....	Hansen & Company Woodworks .....	St Joseph .....	10/6/2022 .....	2-6pm
6.....	Coldspring.....	Cold Spring .....	10/6/2022 .....	4-7pm
7.....	CWMF .....	Waite Park .....	10/6/2022 .....	4-7pm
8.....	Metal Craft .....	Elk River .....	10/6/2022 .....	4-7pm
9.....	Rosenbauer America.....	Wyoming .....	10/6/2022 .....	4pm, 5pm, 6pm
10.....	Starrett Tru-Stone .....	Waite Park .....	10/6/2022 .....	9:30 & 10:30am
11.....	Nahan Printing .....	St Cloud.....	10/7/2022 .....	12- 6pm
12.....	Seitz Stainless .....	Avon .....	10/8/2022 .....	9am - 12pm
13.....	Two River Enterprises .....	Holdingford .....	10/8/2022 .....	9am-12pm
14.....	DCI .....	Waite Park .....	10/8/2022 .....	10am-12pm
15.....	Park Industries.....	Waite Park .....	10/14/2022 .....	12-4pm
16.....	Whirltronics.....	Buffalo .....	10/21/2022 .....	8-10am
17a.....	Ridgewater College .....	Hutchinson.....	10/27/2022 .....	10am-1pm
17b .....	Ridgewater College .....	Willmar .....	10/28/2022 .....	10am-1pm
18.....	Brenny Transportation .....	St Joseph .....	virtual .....	NA
19.....	Central McCowan .....	St Cloud.....	virtual .....	NA
20.....	Engel Metallurgical.....	Sauk Rapids.....	Virtual.....	NA
21.....	ichor.....	St Cloud.....	Virtual.....	NA
22.....	Rotochopper .....	St Martin.....	Virtual.....	NA
23.....	Standard Iron & Wire Works .....	Monticello.....	virtual .....	NA
24.....	Thermo-Tech .....	Sauk Rapids.....	Virtual.....	NA
25.....	Wells Concrete.....	Albany .....	Virtual.....	NA
26.....	West Central Steel, Inc. ....	Willmar .....	Virtual .....	NA



• In Person • Virtual





**Celebrating  
67+ years in  
business!**

# COME SEE WHY WE ARE PROUD!



**TOUR REQUIREMENT:**  
Closed Toe Shoes

Safety Glasses  
Provided

Private Tours  
upon request. Contact:  
[ajwaggoner@dcinc.com](mailto:ajwaggoner@dcinc.com)

SERVING THE FOOD, DAIRY, BEVERAGE, PHARMACEUTICAL, BIOTECH,  
COSMETIC, CHEMICAL, ANIMAL HEALTH, AND WINE INDUSTRIES.

**#dcifamily #dciproud**

[www.dciinc.com](http://www.dciinc.com)  
320-252-8200  
600 N. 54th Ave.  
St Cloud, MN 56303



## Make it **YOUR** time in manufacturing!

Ridgewater College partners with industry to provide relevant education to meet the ever-changing needs of businesses. Whether you're starting your educational journey or seeking continuing education, our advanced manufacturing and engineering technology programs can prepare you for a high-paying, in-demand career.

- Manufacturing Automation Technologies
- Nondestructive Testing Technology (NDT)
- Computer-Aided Drafting & Design
- Machine Tool Technology
- Welding



A member of Minnesota State

HUTCHINSON | WILLMAR | ONLINE  
800-722-1151 | RIDGEWATER.EDU/MANUFACTURING

An equal opportunity employer/educator



Ranked #1 Minnesota Community College and US Top 20, 2020 & 2021, *niche.com*

## LET'S MAKE OUR ENERGY-SAVING IDEAS YOUR COST-SAVING IDEAS.

Your business is unique. How you save energy will be, too. Let us put all our energy into helping your company optimize energy efficiency, with a whole host of free consulting services and rebates to offset initial equipment costs. You. Us. Together. That's good energy.

Connect with us at  
[xcelenergy.com/Business](https://xcelenergy.com/Business)  
or call 855.839.8862.



© 2021 Xcel Energy Inc.





#1

IN-PERSON

250 Riverside Avenue N  
Sartell  
320.259.2000  
[www.dezurik.com](http://www.dezurik.com)

Wednesday,  
October 5th  
10am-12pm

Guided tours,  
every half hour



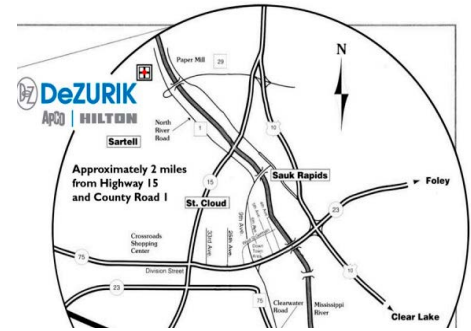
Handicap  
accessible

Ages 16+  
allowed on tours

Must wear  
closed toe shoes  
and long pants

Give aways  
at end of tour

Online employment  
applications



## DIRECTIONS

Off of Riverside Avenue North  
in Sartell.

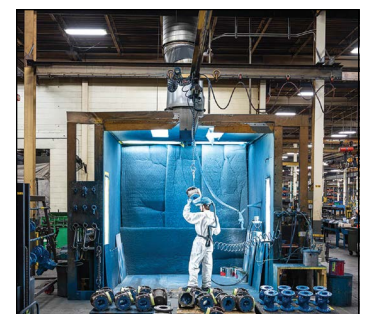
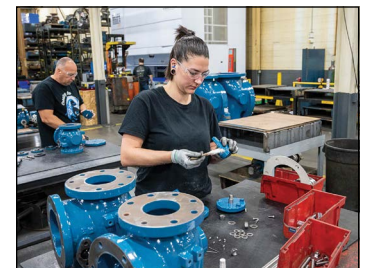
Private tours can also be arranged throughout the year by contacting DeZURIK.

## COMPANY DESCRIPTION:

DeZURIK valves are known for design innovation and quality in water, sewage, pump stations and industrial wastewater applications. DeZURIK delivers exceptional value by applying our valve and problem-solving expertise to improve customers' operational performance. With over 250 years of combined history, the DeZURIK, APCO, HILTON and Willamette brands are recognized worldwide for superior performance. From the introduction of the Eccentric Plug Valve in 1928 to the newest innovations in Air Valves, Butterfly Valves, Check Valves, Gate Valves, Ball Valves and Cone Valves, we remain at the forefront of technology and provide effective solutions for our customers. Our high-quality products and team of

experts make us a global leader in manufacturing valves for water treatment, sewage treatment, water distribution, pulp and paper, chemical and petrochemical, mining, power, hydropower dams, and other process industries valves. Customers worldwide have come to trust DeZURIK, for its design innovation, quality and service. Our commitment to quality ensures customer satisfaction. We apply our expertise to deliver a broad spectrum of

application solutions. Our team continuously delivers superior product performance and best-in-class customer service. You can count on DeZURIK's high quality valves for exceptional performance in a wide range of applications throughout facilities.



#2

**6757 Karmen Ave NE  
Albertville**  
763.200.4782  
[www.advancedvolumetric.com](http://www.advancedvolumetric.com)



Thursday,  
October 6th  
**9am, 11am, 1pm, 3pm**

Must wear closed  
toe shoes

Hard hat and safety  
glasses provided

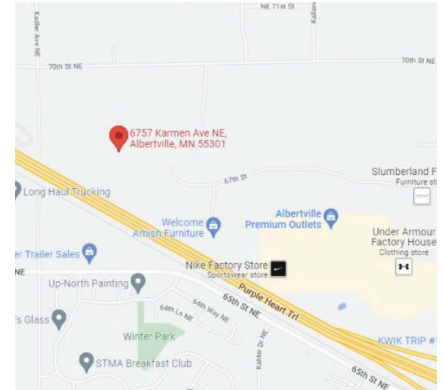
Tour length:  
**30-40 min**

No electronic  
recording devices

Refreshments  
served

RSVP for a tour:  
**763.200.4782**,  
then press 1

Check out our current job openings and  
apply online: [www.advancedvolumetric.com](http://www.advancedvolumetric.com)



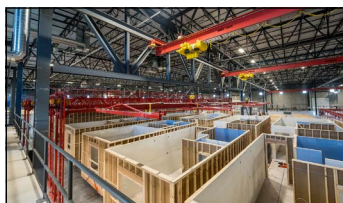
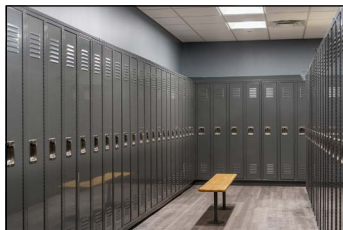
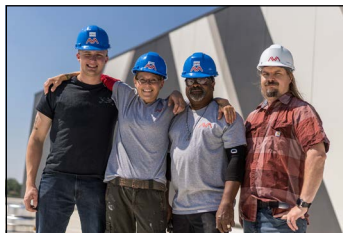
## DIRECTIONS

Located on the road northwest  
of Albertville Outlet Mall,  
next to the Welcome Amish  
Furniture company. Enter at  
the front door.

Private tours can also be arranged throughout the year by contacting AVA.

## COMPANY DESCRIPTION:

AVA is a volumetric off-site building manufacturer that creates entire buildings in a production manufacturing environment. AVA's culture requires accomplished self-starters who thrive in a fast-paced and innovative team environment. AVA is focused on multi-family living, senior living, and the hospitality development sectors along with others. The company designs, engineers, and manufactures industry-leading full volumetric modular units for Upper-Midwest clients in a 180,000 SF state-of-the-art facility in Albertville, MN.







Head of the class - no matter the crop

#3

IN-PERSON

3405 Energy Drive  
St. Cloud

320.252.4633

[www.Geringhoff.com](http://www.Geringhoff.com)

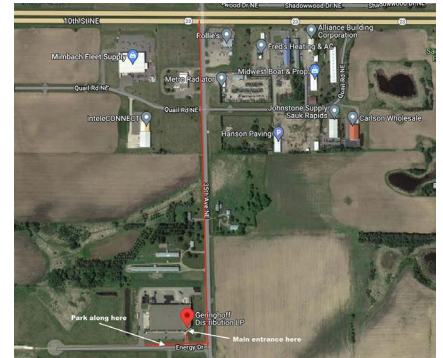
Thursday,  
October 6th  
10am-12pm

Tour length  
**20 minutes**

Must wear  
closed toe shoes

Ages 16+  
allowed on tours

Check out our current openings and apply online:  
[www.geringhoff.com/careers](http://www.geringhoff.com/careers)



## DIRECTIONS

On MN-23 turn onto 35th Ave NE by Rollie's and then turn right onto Energy Drive and park along the road or in the parking lot. Use main entrance.

Private tours can also be arranged throughout the year by contacting Geringhoff.

## COMPANY DESCRIPTION:

Since being founded in 1880, Geringhoff has evolved into a modern, international engineering company that is one of the world's leading manufacturers and developers of agricultural harvesting machinery. For over 140 years, our goal has been to increase productivity and make harvesting easier for farmers around the world. Today, our engineers continue that mission using decades of experience to develop corn, draper, sunflower, and milo heads of exceptional quality and maximum functionality.

During the Tour of Manufacturing / Hiring Event on October 6th, you can apply in person and learn more about our current career opportunities.

## Why join Geringhoff?

We are a company that is helping farmers feed our world! We are manufacturing harvest heads for farmers worldwide and our headquarters is based in Germany.

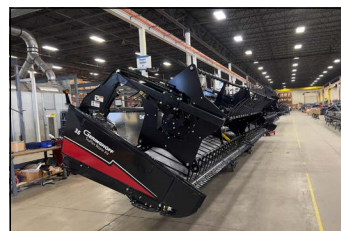
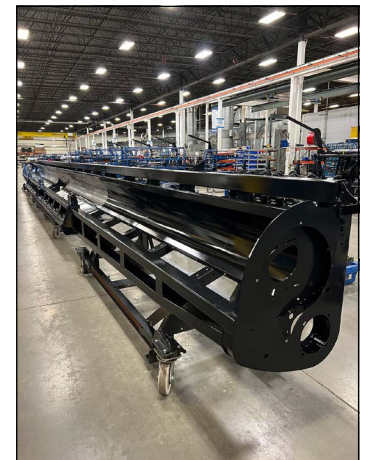
## Our benefits include:

- Medical, dental, and vision plan options with HSA/Employer contributions
- 401k retirement plan with company match
- Short-term disability
- Life insurance
- Paid time off
- 9 paid holidays
- Uniforms
- Safety shoe & eyewear reimbursement
- Bonus earning potential

## JOIN OUR TEAM! HIRING EVENT

APPLY IN-PERSON • MANUFACTURING TOUR

Thursday, Oct 6, 10am-NOON  
[Geringhoff.com/careers](http://Geringhoff.com/careers)



#4

**2789 Clearwater Rd  
Suite X  
St. Cloud**  
800.595.6302  
[www.novaflexled.com](http://www.novaflexled.com)

# NOVA<sup>☀️</sup>FLEX<sup>®</sup>

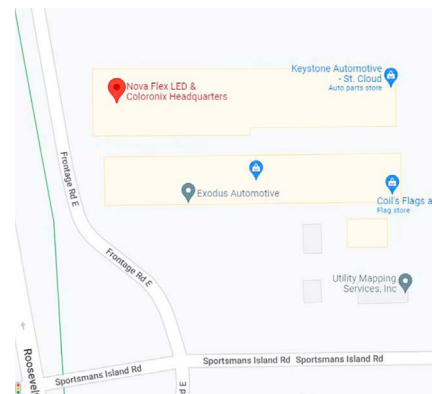
Thursday,  
October 6th  
**11am-2pm**

In person tours every  
**30 minutes**

Must wear  
closed toe shoes

Refreshments and  
meet and greet  
following tour

Check out our current openings and apply  
online at <https://www.novaflexled.com/careers/>



## DIRECTIONS

Nova Flex is located on the West side of the building. There is a green roof with Nova Flex on the corner.

Private tours can also be arranged throughout the year by contacting Nova Flex.

## COMPANY DESCRIPTION:

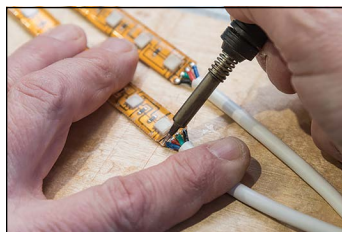
Since 2009, when first being asked to cut and solder LED tape prior to delivery, we've been committed to making lighting easy for our customers and Agent partners. It's our mission to deliver the highest level of customer service in the industry and continually expand our product offerings. We've expanded from LED tape to flex neon, channels, universal power supplies and RGBW flood and wall washing fixtures.

Today, our LED lighting products are used in/on stadiums, skyscrapers, hotels, casinos, educational institutions, restaurants, retail stores, health clubs, churches and more across the country. We're second to none in our customization and personalization!

We are rapidly growing and looking for self-motivated individuals that do what it takes, step up for the greater good, treat everyone with respect, is easy to work with, embraces change and gets it done! Enjoy monthly incentives, company lunches, holiday and summer parties, paid time off, volunteer time off, 401(k) company match, health/dental/vision insurance, and our 'Bucketlist' rewards program.

## Positions Available:

- Production Associate
- Order Processors
- Quotations Associates
- Customer Service







**HANSEN & COMPANY**  
WOODWORKS  
— EST 2004 —

Thursday,  
October 6th  
2pm-6pm

Tour length:  
**30-45 mins**

Safety  
glasses  
provided

Must wear  
closed toe shoes

## VIRTUAL TOUR

Virtual Tour Video: <https://www.youtube.com/watch?v=WSa8XZyujpc>

To learn about hands-on manufacturing experiences for  
students and organized school tours, visit

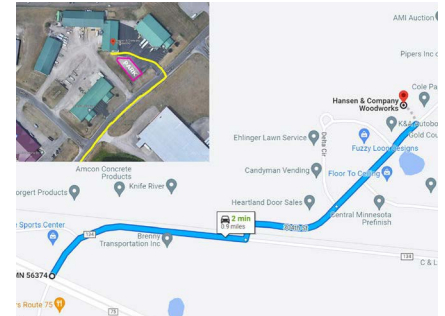
<https://www.HCoWoodworks.com/experience-mfg/>

Private tours can also be arranged throughout the year by contacting HCo.

#5

IN-PERSON

30701 Pearl Drive Suite 3  
St. Joseph  
320.363.0051  
[www.HCoWoodworks.com](http://www.HCoWoodworks.com)



## DIRECTIONS

Located one mile off of Co Rd 75 in St. Joseph, MN. From Co Rd 75, head northeast on Ridgewood Rd / Co Rd 134. Turn onto 304th Street, continue onto Pearl Drive for 0.2 miles. You will see our large sign and main building on the left. Enter at the front door.

## COMPANY DESCRIPTION:

### WHO WE ARE

Hansen & Company Woodworks (HCo) strongly believes products can truly transform a space into an immersive experience when created by the best people. We manufacture custom large-volume build-to-fit cabinets, solid surface and stone countertops, durable and beautiful mobile islands, and impactful architectural millworks for commercial spaces. We help our customers create luxury experiences in apartments, healthcare and education facilities, and commercial properties for renters and visitors to enjoy.

### WHAT WE DO

HCo is a complete custom build-to-order manufacturer of cabinets and one-of-a-kind architectural millworks for commercial

construction. Our products are 100% engineered and manufactured by local experts at our constantly evolving facility in St. Joseph, MN. We blend the advancements of technology with the expertise of design skills to bring the design-intent of architects and interior designers to life. The HCo team is growth minded, gets it done, humble, helpful, takes ownership, and removes stress.

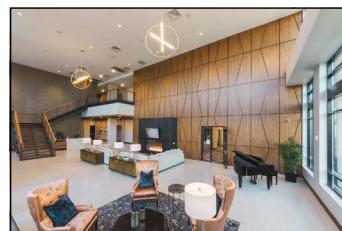
### WORKING AT HCo

**com·pa·ny** (n.) a number of individuals gathered together, especially for a particular purpose.

HCo believes our team members are truly what makes their company. We realize we cannot be successful if our team members aren't successful. We support and invest in a healthy and collaborative environment. Team

members are encouraged to learn about their fellow colleagues' work and ask questions often to learn how their work influences each other. Every year, the entire company participates in a fun and educational team building event to build relationships and foster collaboration.

We offer competitive wages and benefits including health, dental, and vision insurance, 401(K) with company match, paid time off and holidays, life insurance, and Health Savings Account with company match.





# COLDSPRING®

## #6

IN-PERSON

17482 Granite West Rd  
Cold Spring  
800.328.5040  
[www.coldspringusa.com](http://www.coldspringusa.com)

Thursday,  
October 6th  
4pm-7pm

Tour length:  
**45-60 minutes**

Must wear  
closed toe shoes

Hard hat and safety  
glasses provided



Handicap  
accessible

Check out our current openings and apply online:  
<https://www.coldspringusa.com/careers/>

### COLDSPRING VIRTUAL TOUR VIDEOS:

Fabrication Facilities: <https://youtu.be/CILb9SvVSrk>

Quarries: <https://youtu.be/ivUNfYg9z6c>

Foundry: <https://youtu.be/rHjZGd-682A>

Private tours can also be arranged throughout the year by contacting ColdSpring.



### DIRECTIONS

Located on the north side of MN-23, between Richmond and Cold Spring. Attendees can park in the main parking lot outside the office. Tour entrance is through the front office doors.

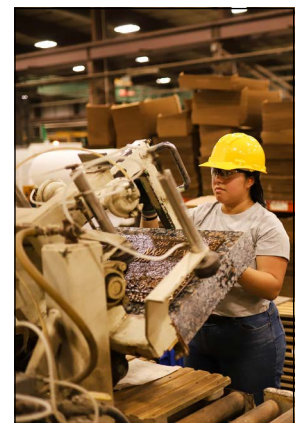
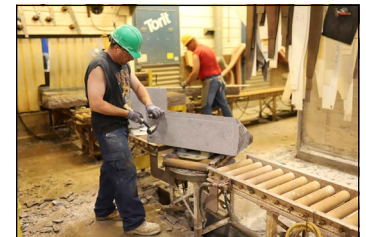
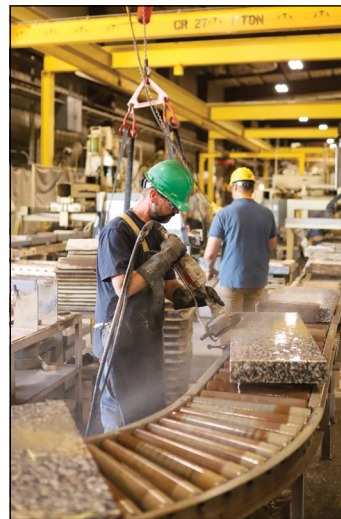
## COMPANY DESCRIPTION:

Since 1898, ColdSpring has served the memorial, architectural, residential and industrial markets with all types of natural stone, bronze, and industrial and diamond-tooling products. With headquarters, a primary manufacturing facility and bronze foundry in Cold Spring, MN, the company has 800 employees at operations across the country, including 30 quarries and multiple fabrication facilities. The company's headquarters, primary manufacturing operations, three Minnesota-based quarries and one South Dakota quarry have received ANSI/NSC 373 Sustainable Production of Natural Dimension Stone certification. ColdSpring's in-house services and support such as drafting,

design, BIM, and project and construction management contribute to creating unique customer solutions.

The passion of our people has built ColdSpring into one of the largest, most innovative quarries and fabricators of stone and other materials. We value teamwork and the skill to understand and surpass customer expectations, along with a determined commitment to corporate sustainability. We are openly looking for manufacturing professionals and general laborer positions to work in their quarries and fabrication facilities.

Learn more at  
[www.coldspringusa.com](http://www.coldspringusa.com).





#7

701 Julep Road  
Waite Park  
320.251.1306  
[www.cwmfcorp.com](http://www.cwmfcorp.com)



Thursday,  
October 6th  
**4pm-7pm**

Tours start at  
4pm and go every  
15 minutes

Safety glasses  
provided

Must wear  
closed toe shoes



## DIRECTIONS

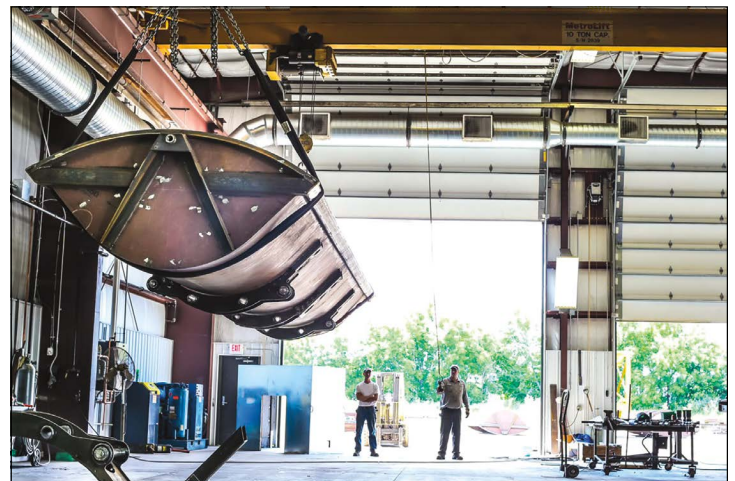
Located off of MN-23 between  
I-94 and 10th Ave S.

Park on the northside of the  
building. Use main entrance.

Private tours can also be arranged throughout the year by contacting CWMF.

## COMPANY DESCRIPTION:

For over 30 years, CWMF Corporation has been offering portable and stationary asphalt plant equipment, parts, and service. What started as a small welding/truck repair shop has now evolved into one of the leading asphalt equipment manufacturers. Since its inception, CWMF believes excellence is the result of focused intention, sincere effort, and skilled execution. Being a second-generation family-owned company, CWMF has been able to keep those same family values 30 years later.



#8

13760 Business Center Drive NW  
Elk River  
763.441.1855  
[www.mcandrs.com](http://www.mcandrs.com)

# METAL CRAFT

BUILT RIGHT. EVERY TIME.

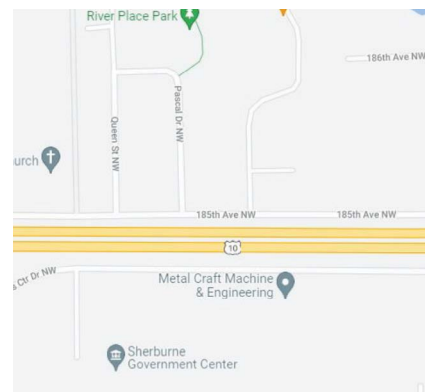
Thursday,  
October 6th  
4pm-7pm

Check out our current openings and apply online:  
[www.mcandrs.com](http://www.mcandrs.com)

Must wear  
closed toe shoes

Safety glasses  
provided

Driver's license will be  
viewed upon entry



## DIRECTIONS

Located next to the Sherburne County Govt. Center. Please park in the parking lots on either side of the building. Enter the front door (Door 1).

Private tours can also be arranged throughout the year by contacting Metal Craft.

## COMPANY DESCRIPTION:

Metal Craft was established in 1978. Jack Mowry started the company in the small suburb of Elk River and began to grow the company. The company began to grow and in 2009 he expanded the facility into a brand new 83,000 sq. ft. building. The company is an expert in the precision machining of medical devices. In 1996, Jack purchased a division of Cray Research in Wisconsin, which was known for brazements. This expanded our operations to precision machining products for the military and aerospace industries. The company has approximately 155 employees with 2 shifts.

## Positions Available:

1st and 2nd shifts:

- Machinist (Milling, Swiss, Turning)
- Quality Technician
- Manufacturing Process Engineer



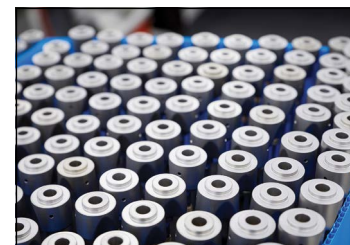
## Capabilities:

- Multi Axis CNC Turning
- 3, 4, and 5-Axis Milling
- 7-Axis Grinding
- Swiss-type Machining
- Gun Drilling and Honing
- Wire EDM & Hole Popping
- Heat-treating
- Brazing (RS)
- Mechanical Finishing
- Laser Etching
- Complex Assembly
- Ultrasonic Cleaning
- Welding: Laser/Tig
- Thermal assembly



**BUILT  
RIGHT.  
EVERY  
TIME.**

BECAUSE WE KNOW THERE'S  
A LOT AT STAKE.







#9

IN-PERSON

5190 260th Street  
Wyoming

651.462.8032

[www.RosenbauerAmerica.com](http://www.RosenbauerAmerica.com)

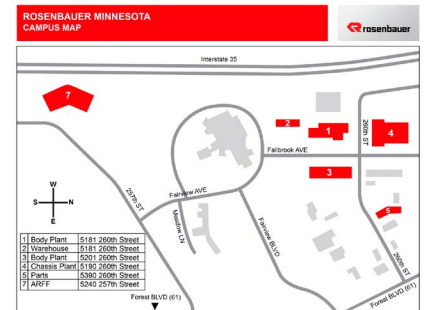
Thursday,  
October 6th  
**4pm, 5pm, and 6pm**

Ages 16+  
allowed on tours

Must wear  
closed toe shoes

Safety glasses  
provided

Apply at [www.buildfiretrucks.com](http://www.buildfiretrucks.com)



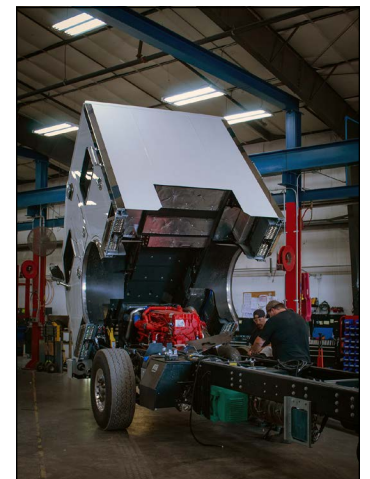
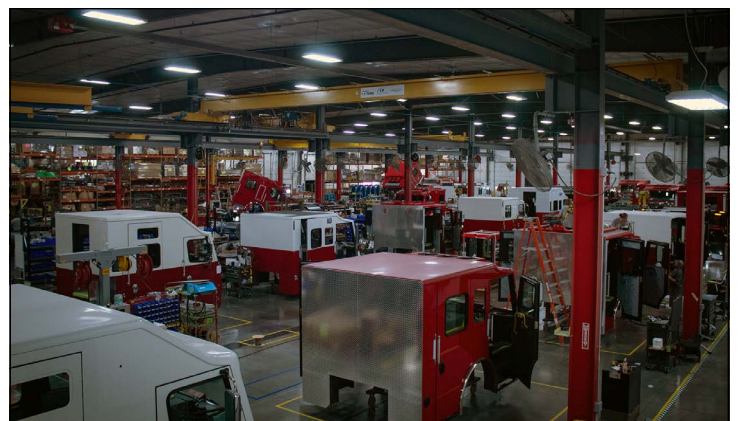
## DIRECTIONS

Tour will start at 5190 260th St.

Private tours can also be arranged throughout the year by contacting Rosenbauer.

## COMPANY DESCRIPTION:

Rosenbauer is the world's leading manufacturer of firefighting vehicles and equipment. Rosenbauer America incorporates global strengths and innovation to provide the largest and most technologically advanced line of custom and commercial pumper, rescues, tankers, aerials, and the all-new Revolutionary Technology (RTX) electric fire truck.



# Starrett®

TRU-STONE TECHNOLOGIES DIVISION

#10

1101 Prosper Drive  
Waite Park  
320.251.7171  
[www.tru-stone.com](http://www.tru-stone.com)

IN-PERSON

Thursday,  
October 6th  
9:30am & 10:30am

Tours will last  
approximately  
30 minutes

Refreshments  
will be served

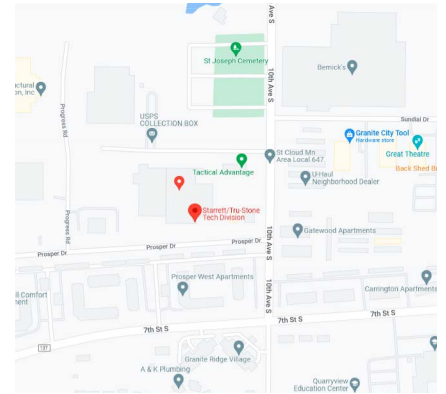
Door prizes  
available

Drawing for one \$250 scholarship for current or potential SCTCC Student in the CNC or Advanced Machinist program (must attend tour to be entered in drawing).

Must wear  
closed toe shoes.  
Safety glasses provided

Designated  
parking

**Open positions:**  
Production Supervisor  
Manual Mill Machinist  
CNC Machinist/Programmer  
Surface Grinder  
**Sign On Bonus of  
\$3,000 & \$4,000**



## DIRECTIONS

Behind Casey's General Store on Prosper Drive. Look for parking sign.

Private tours can also be arranged throughout the year by contacting Starrett Tru-Stone.

## COMPANY DESCRIPTION:

**About Us:** Starrett Tru-Stone Technologies has been providing solutions in precision granite, ceramic, carbon fiber, and other mediums used in precision metrology applications for over 60 years. We have become the world's premiere manufacturer of custom precision granite machine bases and accessories from right here in our own 106,000 sq. ft., environmentally controlled manufacturing facility.

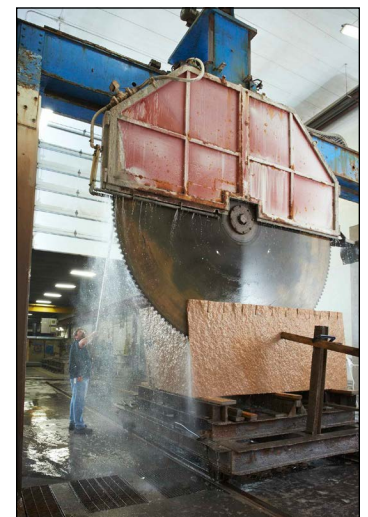
**Products:** Tru-Stone's focus is delivering products that solve your precision base needs. With a full line of standard products and a nearly limitless range of customization option, Tru-Stone provides high accuracy parts for OEM, semiconductor, automation, photonics, and industrial

manufacturing customers all over the world.

**Design Collaboration:** The experienced professionals at Tru-Stone Technologies will transform your design into a finished product. We work with customers to understand their needs and add the value of our experience to optimize designs for accuracy and performance. Starting from new concept or mature design, small part or large assembly, simple requirements or complex needs, the experienced professionals at Tru-Stone will help provide a high quality, efficient design.



**Not Only Granite:** In addition to collaborating on the design and build of your machine foundation, Tru-Stone technicians are skilled at value-added assembly. Using precision equipment, we provide customers with the next-level assembly, such as adding bearing rails, encoder rails, screw drives, stages or vibration damping devices in our nearly 10,000 sq. ft. clean room assembly lab.





#11

**7000 Saukview Drive  
Saint Cloud**  
320.251.7611  
[www.nahan.com](http://www.nahan.com)

# NAHAN

Friday,  
October 7th  
**12pm-6pm**

Guided tours,  
**every half hour**

We will have a  
confidentiality  
agreement

Applications/resumes  
will be welcomed

Refreshments  
available



## DIRECTIONS

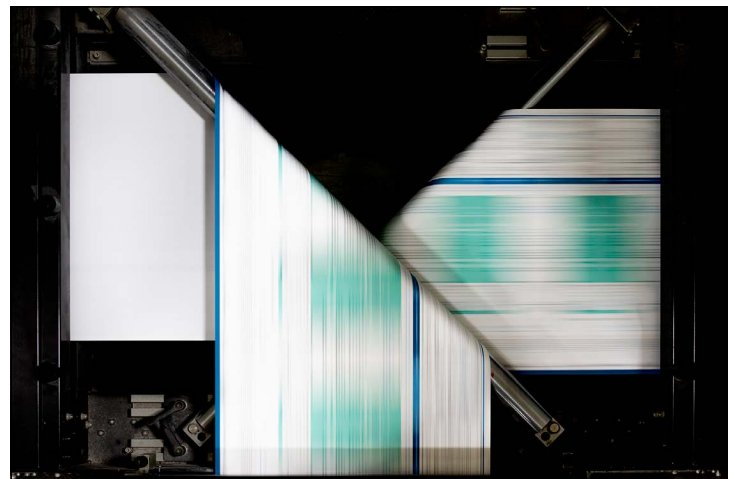
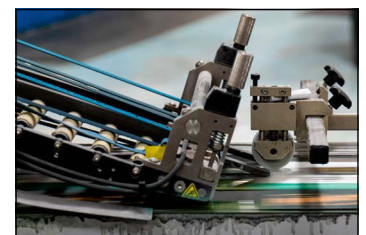
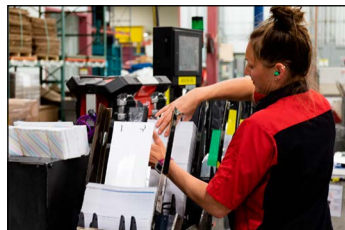
Located on the left-hand side at the end of the industrial park on Saukview Drive. Please enter through Door A under the NAHAN sign.

Private tours can also be arranged throughout the year by contacting Nahan Printing.

## COMPANY DESCRIPTION:

We're Nahan. Full-service marketing solutions with world-class production capabilities. We streamline the entire direct mail process for efficiency and affordability. From direct mail strategy to creative development to printing and mailing, we're there at every stage. We offer an agile production platform, personalized workflow solutions that can scale to meet any need, and a nimble team dedicated to enhancing ROI through performance and cost optimization. Our mailing team guides specs, postal requirements, and design to ensure 360° coverage and overall economy. We have equipment capabilities at our dual facilities in Minnesota and Pennsylvania for everything from lettershop to digital

print solutions and we work with our customers to drive continuous performance improvement. We have top-of-the-line equipment and processes to execute a broad range of direct mail demands, including trigger, acquisition, and engagement campaigns.





# #12

IN-PERSON

17578 400th Street  
Avon

320.746.4000

[www.seitzstainless.com](http://www.seitzstainless.com)

Saturday,  
October 8th  
9am-12pm

Tour length:  
20 minutes

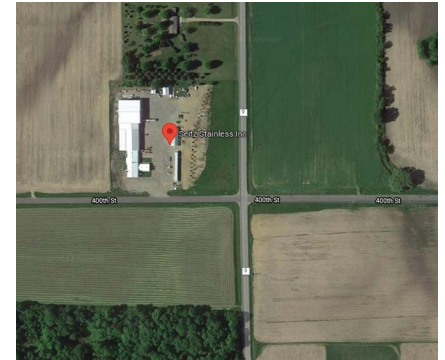
Handicap accessible, may be limited to some areas of the manufacturing floor tour

All are welcome from the community. Students under the age of 12 should be accompanied by a parent or guardian.

Check out our current openings and apply online:  
<https://seitzstainless.com/careers/>

**Tour Video:** <https://youtu.be/R7m9OgA-9L4?t=22>

Private tours can also be arranged throughout the year by contacting Seitz Stainless.



## DIRECTIONS

Seitz Stainless is located 6 miles north of Avon (or 2 miles south of Holdingford) Minnesota along County 9 at the intersection of 400th St. There will be ample parking at the main entrance and south side of the facility.

## COMPANY DESCRIPTION:

Seitz Stainless's roots are deep in the skills and work ethic of Minnesota's dairy heritage. The rough terrain that made crop farming so difficult also transformed the area into one of this country's major dairy-producing areas, and as such the area has seen more than its share of stainless equipment. This plethora of stainless equipment has provided the Central Minnesota area with an impressive infrastructure of stainless steel distributors and service people, and a wealth of skilled technicians and engineers specializing in the design and fabrication of stainless steel tanks, vessels, and other equipment.

For over thirty years, Seitz Stainless, has capitalized on that infrastructure,

providing custom and contract manufacturing of stainless steel and high alloy-based equipment. They can supplement your own manufacturing department to help you manage your shop loading, or they can become your manufacturing arm, allowing you the time and energy to concentrate on design and marketing without the binge and purge of fabrication capacity between projects, or the capital-intensive investment in fabrication equipment.

Seitz Stainless employs 26 craftsmen as well as 15 staff in administrative positions.

### Immediate openings for welders/fabricators!

Do you enjoy fabricating amazing products with stainless steel? Able to work independently or with a team of two to five. Weld, grind, polish. Go from fabrication drawing

to finished product. Work among the best, most seasoned fabricators in the dairy industry. Prior knowledge of 3A a big plus. They will certify you to ASME. You need to have

enough self-confidence and pride to sign your work.







TWO RIVERS ENTERPRISES

#13

IN-PERSON

490 River Street W  
Holdingford

320.746.3156

[www.tworiversstainlesskings.com/](http://www.tworiversstainlesskings.com/)

Saturday,  
October 8th  
9am-12pm

Guided tours,  
every half hour



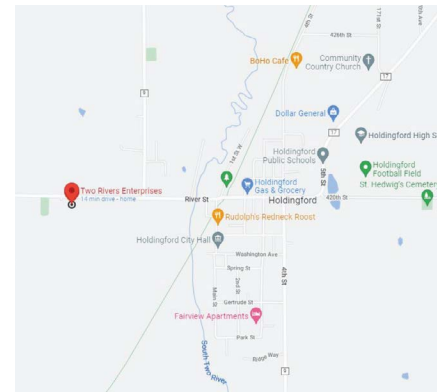
Handicap  
accessible

Students under the age of  
12 should be accompanied  
by a parent or guardian

We will have a  
Confidentiality  
Agreement

Refreshments  
served

Employment  
applications available



## DIRECTIONS

We are located .5 miles west  
of Holdingford on County  
Road 17.

Private tours can also be arranged throughout the year by contacting Two Rivers Enterprises.

## COMPANY DESCRIPTION:

Two Rivers Enterprises (TRE) is a fabricator of high-quality custom stainless-steel commercial, industrial, and wholesale equipment for food processing, foodservice, and restaurants.

We've been building stainless steel equipment since 2001, working with our customers to provide solutions for all of their equipment needs. We have delivered and installed thousands of projects to businesses and manufacturing facilities across the country, from California to Maryland. We continue to grow and evolve to meet the demands of a wide variety of industries and applications. You can trust your stainless-steel fabrication project will be completed with the expert knowledge and skilled

background of the entire TRE team.

By providing superior customer service and high-quality equipment and fabrication services we have built a reputation as one of the premier custom stainless-steel fabricators around!

TRE is UL Custom-Built food Service Equipment Certified and NSF/ANSI 2 Food Equipment Certified.



### Dumpers/Lifts

Our team can design and fabricate stainless steel

dumpers in a variety of configurations, including hydraulic or pneumatic operated, with either a tube frame or tube-free frame.



### Conveyors

We have many different types of conveyors in a variety of shapes, from straight horizontal or vertical to radius turns for many purposes from packaging to ready-to-eat food product movement. There are no limits to the conveyor configurations and applications we provide.

### Restaurant

At Two Rivers Enterprises, we can build anything for your restaurant or foodservice needs! From

tables and mobile carts to cabinets and counters with integrated sinks, our clean, smooth, perfect stainless steel is the best choice for your foodservice or restaurant kitchen!



### Custom/Misc.

When you need specialized, custom stainless-steel equipment, come to the experts at Two Rivers Enterprises! From custom curtains for sanitation, racks, ergo stands, to platforms/mezzanines, our engineers can design, and our expert welders, technicians, and finishers can create the equipment you need to provide a high level of service to your customers, or clients.



#14

IN-PERSON

600 54th Avenue N  
St. Cloud  
320.252.8200  
[www.dciinc.com](http://www.dciinc.com)

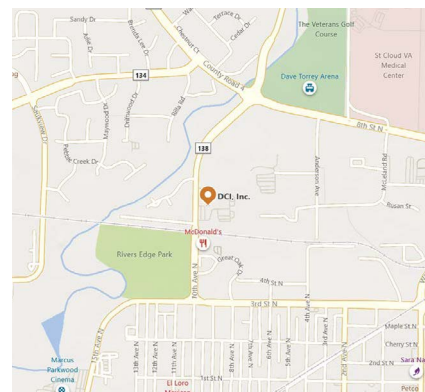
Saturday,  
October 8th  
10am-12pm

Must wear  
closed toe shoes

Safety glasses  
provided

Check out our current openings  
and apply online:

<https://www.dciinc.com/company/careers/>



## DIRECTIONS

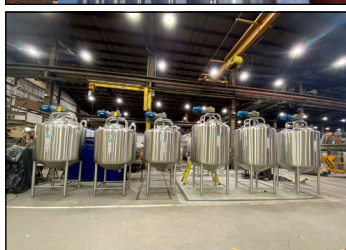
Located between Veterans Drive and 3rd St N, on 54th Ave North. Enter main entrance.

Private tours can also be arranged throughout the year by contacting DCI.

## COMPANY DESCRIPTION:

DCI, Inc. is a world leading manufacturer of stainless steel storage and processing vessels, agitators and integrated systems for a variety of industries. For more than 65 years, we've approached every project with the understanding that the quality of our products

ensures the integrity of our clients. That's why we not only utilize the very best in precision manufacturing equipment, but we also employ the latest technology, tools, and techniques to manufacture equipment to exact specifications.







# #15

IN-PERSON

**6301 Saukview Drive  
St. Cloud**  
800.328.2309  
[www.parkindustries.com](http://www.parkindustries.com)

Friday,  
October 14th  
**12-4pm**

Guided tours  
every half hour



Handicap  
accessible

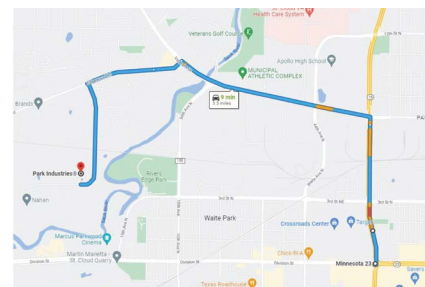
Ages 16+ are  
allowed on tours

Must wear  
closed toe shoes

Refreshments  
served

On-the-spot  
job interviews

Private tours can also be arranged throughout the year by contacting Park Industries.



## DIRECTIONS

From Division Street/Hwy 15 Intersection: Travel North on MN-15. Turn left on 8th Street. Continue on 8th Street for 1 mile. Turn left on County Hwy 134 (Liberty Bank corner.) Turn left on Saukview Drive. Park Industries is located on the right after the railroad tracks.

## COMPANY DESCRIPTION:

Park Industries began providing full-service solutions to the stone industry in 1953 by manufacturing small stone splitters. Today, Park has expanded sales to include HighDefinition Plasma Solutions, CNC Routers, CNC Sawjets, Bridge Saw, Edgers, and the list goes on!

Located in St. Cloud, Minnesota, Park Industries has grown to become North America's largest stoneworking equipment manufacturer and provides precision solutions in the

metal cutting industry. With a steadfast dedication to quality, customer service, and innovative technology, Park employs over 330 associates.

### Tour of Manufacturing/ Hiring Event:

Learn about the world of manufacturing with a detailed tour of our state-of-the-art facility. On-the-spot interviews will be available to help you understand the career opportunities Park has and how you can "Flex Your Skills and Thrive at Park!" "

### Why join Park Industries?

- Satisfaction in your career: Park's associate retention rate is over 90%
- Focus on individual customized advancement, from your first day on the job
- Competitive wages including incentive sharing
- Great benefits including medical insurance, holiday pay, dental & vision, 401(K), child bonding leave, and tuition reimbursement
- Park Industries is THE industry leader, a strong community leader, and an employer of choice in Central Minnesota

- Locally, family-owned business
- Company culture focused on Trust, Integrity, and Respect



### Why Choose Park?

<https://www.youtube.com/watch?v=d3DARwUWDzk>

### Tour of Park Industries:

[https://www.youtube.com/watch?v=Aafu5pl\\_cel](https://www.youtube.com/watch?v=Aafu5pl_cel)

### Tour of Welding Area:

<https://www.youtube.com/watch?v=TRJ-sPzIbtU>

### Tour of Machining Area:

<https://www.youtube.com/watch?v=Ub1CGi04GHk>



#16

208 Centennial Dr.  
Buffalo  
763.682.1716  
[www.whirltronics.com](http://www.whirltronics.com)

# Whirltronics INC.

Where Metal Takes Shape



Friday,  
October 21st  
**8am-10am**

One tour, limited to 10 participants.  
Tour will take approx. 1 hour followed by Q&A.

Long pants are required along  
with a closed toe, closed heel  
shoe that has an anti-slip sole

Safety glasses  
provided

**Ages 18+**  
allowed on tour

Link to YouTube video:  
<https://youtu.be/BCswHZr7fZ4>



**DIRECTIONS**  
Directions from St. Cloud area:  
I-94 East. Take exit 183- County Rd 8/Hasty/Silver Creek and turn right. Turn left onto Hwy 55 E. Turn left onto 1st St NE. Turn Right onto Centennial Dr - Destination is on the left.

Private tours can also be arranged throughout the year by contacting Whirltronics.

## COMPANY DESCRIPTION:

Your Full—Service Source for Metal Stamping, Forming and Austempering.

For more than 60 years, Whirltronics has been serving customer metal stamping, forming, heat treating, painting and packaging needs along with producing a large line of precision lawn mower blades for a variety of distinguished commercial companies and OEMs.

Our mission is to be best in class for the customers we serve. Our core values of compassion, encouragement, collaboration, honesty, trust, passion, safety and respect are the principles that define us.

In our 80,000 square foot facility located in Buffalo, MN, we incorporate expert knowledge and advanced machinery with lean

manufacturing principles to deliver quality product on time. This streamlined process allows us to ensure quality and cost control.

Whirltronics, Inc. offers full-service metal manufacturing with capabilities in stamping, cold forming and austemper heat treatment of low, medium and high-grade carbon steels. Our advanced machinery and facility allows us to service large contracts as well as large and small production runs.

From conception to completion, our engineers and highly skilled production team can develop prototypes and manufacture quality product on time, every time.

ISO 9001 Certified.





#17

**Hutchinson |  
Willmar | Online**  
320.222.5971  
[www.ridgewater.edu](http://www.ridgewater.edu)



A member of Minnesota State

Thursday,  
October 27th  
**10am-1pm**

**Ridgewater College | Hutchinson Campus**  
2 Century Ave. SE  
Hutchinson, MN 55350

**Directions:** College is located across from the hospital.  
Use main entrance.

Meet instructors  
and students

Tour the campus  
and our advanced  
manufacturing programs

Lunch  
provided



Handicap  
accessible

Friday,  
October 28th  
**10am-1pm**

**Ridgewater College | Willmar Campus**  
2101 15th Ave. NW  
Willmar, MN 56201

**Directions:** Use Student Center entrance.

Reserve your spot at  
[www.ridgewater.edu/discover/](http://www.ridgewater.edu/discover/)

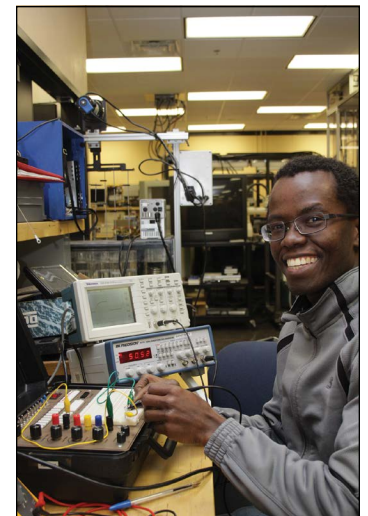
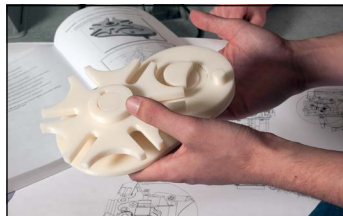
Private tours can also be arranged throughout the year by contacting Ridgewater College.

## COMPANY DESCRIPTION:

At Ridgewater College, we're creating opportunities and changing lives. No matter what your educational goals are, we can help you get there. And we can help employers with training needs too. As a community and technical college with campuses in Willmar, Hutchinson, and online, we offer nearly 100 educational programs in technical and transfer education, as well as customized training and continuing education opportunities. In fact, some of our programs are unique to not only Minnesota, but the nation. For 2020 and 2021, Ridgewater was ranked Minnesota's #1 Community College by niche.com based on value, strong academics, student life, facilities, diversity, student experiences, location, and safety.

## Advanced Manufacturing & Engineering Technology Programs

- Manufacturing Automation Technologies (Hutchinson)
- Computer Aided Drafting and Design (Online)
- Machine Tool Technology (Hutchinson & Willmar)
- Nondestructive Testing (Hutchinson)
- Welding (Hutchinson & Willmar)





# #18

VIRTUAL

8505 Ridgewood Road  
St. Joseph  
320.363.6999  
[www.brennytruck.com](http://www.brennytruck.com)

## FOR CURRENT OPENINGS AND TO APPLY ONLINE:

<https://brennytransportation.com/career-opportunities/>

## VIRTUAL TOUR:

<https://www.youtube.com/watch?v=ZnsTI4GR71E>

## WHY WORK HERE...

Brenny is a family-owned and operated company who cares about and puts people before profit. More than 100 team members call Brenny home; including: Company Drivers, Owner Operators, Maintenance Technicians, Logistics, Operations, Business Service and more! Join our fun and dynamic team!



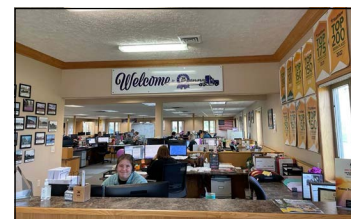
## COMPANY DESCRIPTION:

Brenny was founded in 1996 because Joyce and Todd Brenny wanted to be part of a company that treated people with respect, a company which honored champion character, with a team driven to serve! Brenny's inception into the trucking world began in a very humble way: in a small rented office in Waite Park, MN with three employees and the power of a big idea. Joyce and Todd wanted to show the trucking world that providing Grand Champion Customer Service in an honest and ethical manner could lead to success, and it has! Brenny's growth has been adaptable to the needs of their customers. Brenny has grown because of their superior respect for their customers' needs, as well as honoring the hard

work and dedication of their champion team members. Customers and team members never question if Brenny cares. They know that Brenny cares!

There are many years of transportation knowledge and experience leading Brenny; experience you can count on. Joyce's career in transportation began in 1980 and Todd's began in 1988. Brenny's Vice President, Bonnie Supan began her career in transportation in 1994. You could say Joyce, Todd and Bonnie are transportation experts. Todd and Joyce both started their careers in transportation behind the wheel of a truck. Between Joyce, Todd and Bonnie they have performed most duties involved in the transportation industry. This expanded knowledge of transportation has helped Brenny secure a stable place in the trucking

industry. Brenny will be handling customers' transportation needs far into the future.





#19

123 Roosevelt Road  
St. Cloud

320.257.4800

[www.centralmcgowan.com](http://www.centralmcgowan.com)**VIEW OUR 75TH ANNIVERSARY VIDEO**[www.centralmcgowan.com/about/our-story/](http://www.centralmcgowan.com/about/our-story/)**PRIVATE TOURS**

are available of our distribution operations, dry ice manufacturing or automation center, contact [info@centralmcgowan.com](mailto:info@centralmcgowan.com)

**FOR CURRENT OPENINGS AND TO APPLY ONLINE:**[www.centralmcgowan.com/about/careers](http://www.centralmcgowan.com/about/careers)**INFORMATION**

- 8 Locations in MN, IA & ND
- 75 Years Strong
- 140+ Team Members
- Family-Owned & Focused
- Great Company Culture

**75**  
 1947-2022
**WHY WORK HERE...**

We're growing! And so is our need for people who share our passion for serving customers and a belief in our values of shared success, trust, innovation, collaboration, and culture.

**COMPANY DESCRIPTION:****About Central McGowan**

Central McGowan is a growing, diversified business. We are a leading supplier of gases, dry ice, and state-of-the-art equipment/technology for the manufacturing, welding, medical, and food and beverage industries in the upper Midwest, and a FANUC-authorized integrator of automation/robotic solutions.

Our service area spans all of Minnesota and Iowa, and parts of North Dakota, South Dakota and Wisconsin with automation implementations across

the U.S. and internationally. We're family owned with local roots and proud of it.

After decades of doing business, we believe quality and integrity are the keys to our business, as is always putting our customers first. And we believe our employees are the reason for our success and are proud of their loyalty, dedication, and longevity. We are committed to providing a safe, challenging, and rewarding work environment where our employees can thrive.

**Apply Today!**

We are a great place to work with outstanding people, loyal customers,

and an awesome benefits package. We have CAREERS in Engineering, HR, Sales,

Marketing, Distribution, Accounting, Finance, Automation, Equipment Repair, and more.

**WE WORK FOR YOU.™****Equipment & Consumables****Gases/Gas Services****Automation Solutions**

# ENGEL

## METALLURGICAL LTD.

# #20

VIRTUAL

925 Industrial Dr. S.  
Sauk Rapids  
320.253.7968  
[www.engelmet.com](http://www.engelmet.com)

### PRIVATE TOURS

are available by contacting  
**Kathy Zenzen at 320-253-7968**

**FOR CURRENT OPENINGS AND TO APPLY ONLINE**

[www.engelmet.com](http://www.engelmet.com)

### WHY WORK HERE...

Our team of engineers, technicians, and administrative staff is committed to providing timely and cost-effective service, which adds value to our customer's products. Through the services we provide and our support of community and technical activities, we also strive to improve our society, our environment, and ourselves.



### COMPANY DESCRIPTION:

Engel Metallurgical specializes in product failure analysis, materials evaluations, and general materials engineering consulting. Our customers include large and small industrial clients, insurance companies, and attorneys. The industries represented by our industrial clients are quite diverse, including manufacturers of medical devices, computer equipment, power generation machinery, etc.

Through experience, we realize that projects sometimes require a multi-disciplined approach, and that occasionally we may need to draw on other resources and expertise. For that reason, Engel Metallurgical Ltd. has developed strong relationships with other

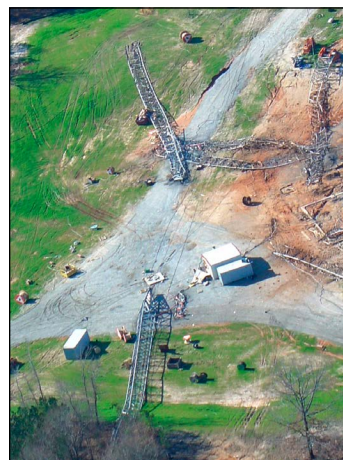
engineering firms in various disciplines, including: chemical, civil, drafting and design, electrical, mechanical, welding, and structural.

Engel Metallurgical is ISO/IEC 17025 accredited. Laboratory accreditation means that clients receive test results from a firm that has achieved a highly recognized technical competency for testing laboratories. Previously, attorneys, insurance companies, and manufacturers relied on references or their own audits to determine the laboratory's capabilities and quality levels.

Accreditation ensures Engel Metallurgical clients that our lab operates and maintains an internationally-recognized quality management system covering processes

and documentation - and that we have processes in place to ensure valid test results.

Our customers can feel confident that they will receive unbiased, timely, cost effective, sound answers.





**1003 Industrial Drive  
Sauk Rapids**  
320.251.0390  
[www.ichorsystems.com](http://www.ichorsystems.com)



### VIRTUAL TOUR VIDEO LINK

<https://youtu.be/xl8SCAdTC3Q>

### PRIVATE TOURS

are available by contacting us at 320-251-0390 or  
email [rcondon@ichorsystems.com](mailto:rcondon@ichorsystems.com)

### FOR CURRENT OPENINGS AND TO APPLY ONLINE

<https://www.ichorsystems.com/career>



## COMPANY DESCRIPTION:

Ichor Systems is a global leader in the design, engineering, and manufacturing of critical fluid delivery subsystems which are key elements used in semiconductor manufacturing.

With globally located production facilities, Ichor offers exciting opportunities at all levels. Schedule a tour and learn how you can be a part of this thriving, rapidly growing industry!

### Semiconductor Facts:

- 2021 almost 1.14 trillion chips were sold in the world. That's 140 chips for every person on the planet!
- Semiconductors have become an essential part of our daily lives through computing, telecommunication, household, banking, security, healthcare, and transportation.

We've all noticed the effects of the "chip shortage" over the past few years. With US Support for the growth of manufacturing in the semiconductor industry,

we are seeing long term continued growth leading to many new opportunities for our employees.

We offer a fun, casual environment with competitive pay, an amazing benefits package and the chance to make an impact on the future in a big way!

### Hiring on all shifts:

- Machinists, CNC Programmers
- Welders
- Assemblers, Cleanroom Technicians
- Shipping, Receiving, Materials Handlers
- Quality Professionals - Inspectors, Technicians and Engineers
- Planning, Procurement, Finance
- Engineering



#22

217 West Street  
St. Martin  
320.548.3586  
[www.rotochopper.com](http://www.rotochopper.com)



## VIRTUAL TOUR VIDEO LINK

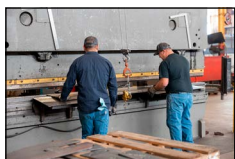
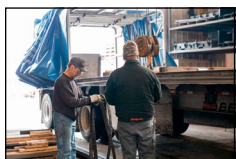
<https://www.rotochopper.com/videos/>

## PRIVATE TOURS

are available by contacting Angie Brick at 320-548-3586

## FOR CURRENT OPENINGS AND TO APPLY ONLINE

<https://www.rotochopper.com/careers/>



## COMPANY DESCRIPTION:

Rotochopper is located in St. Martin, Minnesota. The Rotochopper brand began when two companies from different industries joined forces to manufacture unique recycling equipment. The history of Rotochopper is a story about viewing challenges as opportunities. The story begins in the recycling industry and a unique approach that became known as "Perfect in One Pass®." Over the years we have developed a global presence while maintaining our home base in St. Martin. Our exact location is essential to our identity and our success. Rotochopper's company mission is clear - to keep our customers happy, our people employed, and our company profitable in ST. MARTIN.

We specialize in

profitable, sustainable solutions that transform waste materials into premium products like colored mulch, animal bedding and compost. We manufacture a complete line of horizontal grinders, wood chip processors, fine grinding systems, and portable bagging systems. As a factory-direct, employee-owned company, Rotochopper is uniquely focused on continuing to meet and exceed the needs of our customers.

Rotochopper requires a wide range of skills to service our customers' needs. Rotochopper hires welders, assemblers, finishers, robot operators, painters, engineers, accountants, customer service team members, truck drivers, and many other professionals. Rotochopper looks for employees who are committed to quality and

growing with us.

An important part of the success of Rotochopper is our partnership with local schools and communities. Rotochopper understands that their mutual successes build cities and towns that are attractive places to live, work, and play. This is not only for this generation but more importantly for the generations to come. Rotochopper understands that as we collaborate with communities, we will build a stronger and better

place to live. Rotochopper's community giving is focused around three areas including education, community-enhancement, and health and well-being.





**524 Pine Street  
Monticello**  
763.295.8700  
[www.Std-iron.com](http://www.Std-iron.com)



## VIRTUAL TOUR VIDEO LINK

<https://www.youtube.com/watch?v=94Z3fXouD1A>

## FOR CURRENT OPENINGS AND TO APPLY ONLINE

<http://www.std-iron.com/Careers.cfm> or email [mjobs@std-iron.com](mailto:mjobs@std-iron.com)

## PRIVATE TOURS

are available by contacting us at 763.295.8700

## WHY STANDARD IRON?

Ask around. We've built the standard for quality for our clients and as a great place to work, with competitive wages, benefits and flexibility for work-life balance. We do this through a culture of growth, respect and community at our Minnesota facilities.

## INFORMATION

- 6 Facilities (MN, NE, GA, MX)
- 500 Employees (and growing)
- **Join our team!**  
We're hiring in your area:
- **A NEW Production Control Specialist/Buyer:** Alexandria
- **Welders:** Sauk Centre, Alexandria
- **NC Machine Operators (Laser/Press Brake/Turret):** Sauk Centre, Alexandria
- **Painters:** Sauk Centre
- **Flexible Shifts Available:** 1st/2nd – Monday – Thursday, 4 10-hour days; Weekend: Friday – Sunday, 3 12-hour days.
- **Visit <https://www.std-iron.com/Careers.cfm> to apply today!**

## COMPANY DESCRIPTION:

You may not know us yet, but you already know the customers who seek our quality metal fabrications for their manufacturing operations. John Deere, Caterpillar, Kawasaki and CNH are just a few of our customers for whom we manufacture metal fabrications that feed, clothe, transport and build the infrastructure of the world — since 1930.

The key to our success comes down to our great employees and our customer relationships — especially with our Minnesota manufacturing partners.

## Contract Manufacturing Division:

Whether the need is a simple shear, brake, plate roll, or a more sophisticated welded assembly, Standard

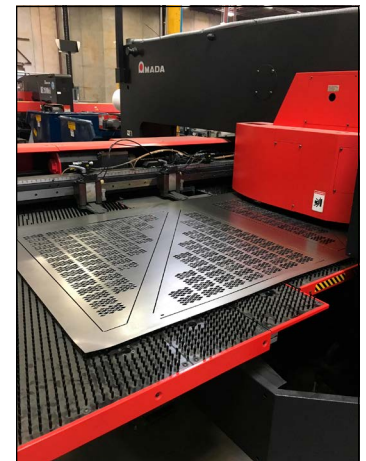
Iron has the cutting-edge technology and certified expertise to be a one-stop contract manufacturer for OEMs.

## Major industries we serve include:

- Off-Highway
- Agriculture
- Construction
- Transportation
- Energy
- HVAC
- Recreation

## Architectural Metals Division:

Our state-of-the art Building Information Modeling (BIM) process is how we deliver fabrications and erection services for any size or range of construction projects. Just a few of our major projects include: Mall of America, Huntington Bank Stadium, Target Field, Xcel Energy Center and more!



Manufacturing Facility in Alexandria, MN



Manufacturing Facility in Sauk Centre, MN



**1120 38th Avenue NE**  
**Sauk Rapids**  
**320.529.4012**  
[www.ttwindows.com](http://www.ttwindows.com)

### VIRTUAL TOUR VIDEO LINK

<https://player.vimeo.com/video/589965746>

### CHECK OUT OUR CURRENT OPENINGS AND APPLY ONLINE:

<https://ttwindows.com/about-thermo-tech/careers/>

### PRIVATE TOURS

are available by contacting us at 320.259.4012



## COMPANY DESCRIPTION

Thermo-Tech Premium Windows and Doors traces its history to a generation ago, when East Side Glass first opened in family garage in St. Cloud, Minnesota. It was 1953, a time of innovation, quality, and craftsmanship. When Thermo-Tech opened in 1993, they brought those same values to their premium vinyl windows and doors. Thermo-Tech is committed to build only products that they are proud to sell, and products their dealers can be proud to sell.

### Thermo-Tech's Mission

To prove to customers every day that Thermo-Tech offers the highest quality window and door products at an exceptional value; delivered as promised by a talented workforce committed to excellence

with the best customer experience available.

### Thermo-Tech's Values

- Act with uncompromising honesty, dignity, integrity, and respect for others.
- Meet or exceed business partners' expectations for quality, value, service, and product variety.
- Value and develop employees to promote a culture of continuous improvement, customer focus and teamwork.
- Earn the respect and admiration of everyone associated with Thermo-Tech Premium Windows and Doors.
- Conduct business as good corporate and environmental citizens.
- Provide a reasonable return through sustainable market growth.

### Why Work Here

As a dynamic and growing company, we offer exceptional career opportunities with performance-based compensation and benefits in a team-oriented, family-friendly working environment.

Thermo-Tech seeks individuals with proven leadership, organization, and team-building skills. Applicants must be highly motivated with a strong work ethic and a desire to learn. Experience in window manufacturing is a plus.

Thermo-Tech employs 230 people in a variety of different roles, including:

- Assembler/ Machine Operator
- Field Service Technician
- Shipping Loader/Stager





#25

**210 Inspiration Lane  
Albany**  
320.845.2229  
[www.wellsconcrete.com](http://www.wellsconcrete.com)



### VIRTUAL TOUR VIDEO LINK

<https://vimeo.com/709655215>

### PRIVATE TOUR

are available by contacting us at 320-428-2247

### FOR CURRENT OPENINGS AND TO APPLY ONLINE

<https://www.wellsconcrete.com/careers/midwest/>



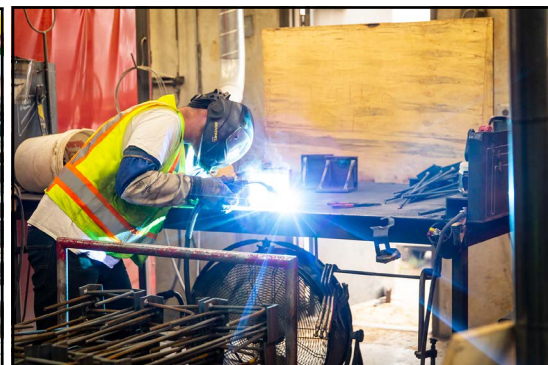
## COMPANY DESCRIPTION:

At Wells, our mission is to inspire pride within communities and help them thrive by transforming how our partners think, design, construct and succeed. We know that using quality, prefabricated building components are critical to the success of any construction project.

Every day, more architects, engineers, contractors, developers, and owners specify Wells precast building components for their construction needs. Our versatile building solutions and extensive expertise in virtual design and preconstruction collaboration results in long-lasting relationships and memorable structures that form communities that will last for generations. Our team is committed

to reducing risk, building confidence, and deliberately planning for our partners success – from vision through construction and beyond.

From the initial design and modifications to field installation, we collaborate with our building partners – turning vision into reality.



### Make your work your legacy.

Challenge yourself to succeed in a company dedicated to helping individuals thrive. Whether a seasoned veteran or a recent graduate, Wells offers rewarding career opportunities to put your skills to use, advance your knowledge and create community landmarks that inspire pride among those closest to you.

**West  
Central  
Steel**

**#26**

**VIRTUAL**

**110 19th Street NW  
Willmar**  
**800.992.8853**  
[www.WCSteel.com](http://www.WCSteel.com)

## **VIRTUAL TOUR VIDEO LINK**

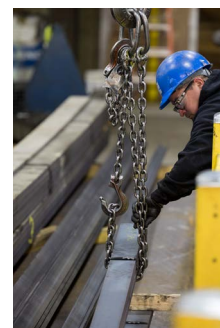
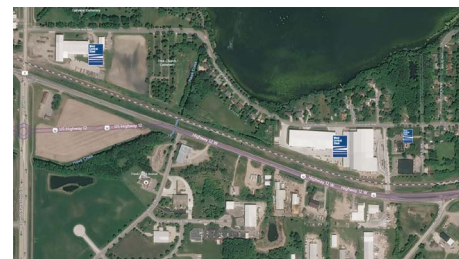
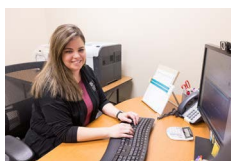
<https://www.wcsteel.com/about/>

## **FOR CURRENT OPENINGS AND TO APPLY ONLINE**

<https://www.wcsteel.com/careers/>

## **PRIVATE TOUR**

are available by contacting us at 800.992.8853



## **COMPANY DESCRIPTION:**

As a full line carbon steel service center and parts processor, we're in the business of providing customers with steel and custom parts where and when they need them. A high level of responsive service and quality work done efficiently allows us to deliver steel the next day across the Midwest.

For over 70 years, we've maintained our status as leaders in the industry by committing to safety, quality, responsibility, relationships, and growth in everything we do. Our family-owned business started in 1949 and has continually grown from a handful of garages to 305,000 square feet of production and warehouse space.

As a steel distributor, we purchase steel from steel

mills throughout the country by the truckload, railcar or barge load. Then sell the steel to manufacturers and fabricators in the five-state area. Many times, the steel is delivered the next day allowing customers to save money with reduced inventory and lower material handling costs.

Our parts processing capabilities include saw, torch, plasma and laser cutting for both flat and three-dimensional steel shapes. In addition to cutting parts, we can finish parts complete by drilling and taping holes, bending, welding, priming and kitting parts.

We are continually growing and have done 11 expansions over time. In 2018, the company opened the largest expansion with an 85,000 square foot parts processing facility. The new facility contains cutting edge technology to save

customers time and money. In 2021, we expanded our rail car access and in 2022, we are opening up our expanded sales office to continue to grow the business.

Investing in the future is integral to the way West Central Steel does business. Whether it is in our people, equipment, or the community. The

company is involved in workforce development initiatives to expose high school students to the great jobs in the community while strengthening the manufacturing base in the area.

If you are interested in learning more about West Central Steel please see our website at WCSteel.com.







expanding  
Ag Innovation  
& Technology



growing  
Industrial  
Development



building  
Entrepreneurial  
Support



Kandiyohi County & City of Willmar  
ECONOMIC DEVELOPMENT COMMISSION



866.665.4556 | 320.235.7370

edc@kandiyohi.com | www.kandiyohi.com

Explore manufacturing in West Central Minnesota throughout October;

Oct. 3-7: Kandiyohi County

Oct. 10-14: McLeod County

Oct. 17-21: Renville County

Oct. 24-28: Meeker County

Follow our social media and #MnManufacturingMonth

# Central Minnesota Manufacturing

Manufacturing is the second largest industry in Central Minnesota, accounting for 15% of all jobs in the region. Almost 1,200 manufacturing establishments provide roughly 40,000 jobs with average annual wages topping \$60,585, almost \$10k more than average wages across the broader regional economy. Central Minnesota Manufacturing employers have been posting record numbers of openings and more than 2,300 openings were recorded in the 4th quarter of 2021.

The tight labor market and high demand for goods has pushed wages higher than ever before. The median wage offer across all occupations at Central Minnesota Manufacturing employers was \$19.49 by the end of 2021 and is likely continuing increasing.

Production occupations that offered the largest numbers of openings include Welders, (with a median wage offer of \$23.43), Assemblers and Fabricators (\$23.64), Engine and Machine Assemblers (\$23.73) and CNC operators (\$17.74). However, there are many highly demanded manufacturing related occupations in the region.

Machinists are ranked as the most demanded Manufacturing related occupation, requiring vocational training and paying a healthy \$53,178 median wage. Other high paying, in-demand Manufacturing related occupations include First-line Supervisors of Production and Operating Workers (\$66,400 median wage), Industrial Engineers (\$86,523), First Line Supervisors of Mechanics and Installers (\$70,217), Mechanical Engineers (\$76,903), and Industrial Production Managers (\$95,192).

The minimum cost to live in Central Minnesota requires an hourly wage of \$18.29 for a typical family (two parents and one child) or \$16.10 for a single person with no kids. While only the Twin Cities has a higher cost of living than Central Minnesota, nearly every production occupation had starting wages above the minimum cost to live for a single person.

A variety of education is needed to be successful in Manufacturing, ranging from a high school diploma to a bachelor's degree or more. Gaining Manufacturing skills and knowledge in high school is a great way for students to bring more value to employers and gain access to higher paying jobs earlier in their career. With plentiful job openings that pay better than typical (median wage offer for all openings in Central Minnesota was \$17.26), Manufacturers provide the region with a resilient economy and excellent careers. Find more in-demand careers in manufacturing and STEM by using the Career Pathways tool!

<https://mn.gov/deed/data/data-tools/career-pathways-tool/>

Figure 1.



**For more information, contact:**  
 Luke Greiner, Regional Analyst, DEED  
 luke.greiner@state.mn.us or 320-308-5378



# Minnesota's First Employer Resource Network® Delivers Innovative Workforce Development



Five regional employers have partnered with Southwest Initiative Foundation to launch Minnesota's first Employer Resource Network®, including Bethesda with locations in Willmar, Olivia and New London; Minnesota Rubber & Plastics and Towmaster Trailers and Truck Equipment located in Litchfield; Jackpot Junction Casino & Hotel, part of the Lower Sioux Indian Community; and Jonti-Craft in Wabasso.

A workforce shortage is nothing new to southwest Minnesota employers. At the same time, employees face barriers to finding career success and providing for themselves and their families. ERNs are a solution to both: They assist companies in supporting working families while driving business growth.

Southwest Initiative Foundation is using a model developed in Michigan in 2007 called Employer Resource Network® USA. This model combines job retention services, work supports, education and training. It assists employees in successfully navigating work and personal situations and employers in developing and retaining talent. ERNs also work with community service providers like social service agencies, workforce development groups, chambers of commerce, economic development groups and community and technical colleges or other training institutions.

## How it works

Employer Resource Network® member companies pay for access to an on-site network Success Coach who works directly with employees as a coach, advocate and connector. Nationwide, member companies average a 500 percent return on their investment based on job turnover rates, the cost of skill building and training and increased productivity.

The Success Coach assists with a wide range of challenges and opportunities—both work-related and personal, which can include accessing child care; dealing with financial pressures; budgeting, banking or building a credit score; affordable housing options; transportation and car repairs; applying for other programs; locating counseling; managing conflicts with family/co-workers; and training, education or career advancement.

Together, the Success Coach and employees set goals, access resources and explore supports that will help them excel at work and beyond.

## Meet Success Coach Jean Spaulding



Jean Spaulding is an employee of Southwest Initiative Foundation and spends her time onsite with current Southwest Initiative Employer Resource Network® member companies. Jean meets with employees in this network to identify issues they're facing and make a personal connection to resources and assistance to help them excel at work and at home. She also builds relationships with supporting community organizations and service providers.

## Supporting kids and families

ERNs match both short- and long-term economic development strategies for communities, businesses, families and kids—from cradle to career. The model is a great fit for Southwest Initiative Foundation's Grow Our Own programming, work to ensure that all southwest Minnesota kids can access the opportunities they need to reach their full potential.

One of the things kids need to succeed is stable families and parenting. Through ERNs, workers gain economic self-sufficiency and build wealth for themselves and their families. They also can access the supports they need to provide safe, nurturing environments for the kids in their lives.

Career on-ramps are another key to our kids' success. ERNs help southwest Minnesota employers develop and retain talent, ensuring the region will continue to have strong businesses as young people prepare for and enter the workforce.

**Learn more at [swifoundation.org](https://swifoundation.org).**

# On-the-Job Training (OJT) Benefits Business and New Employees

New hires learn occupational skills and earn a wage at the same time. Business saves time and money. A win-win for business and jobseekers!

OJT businesses can receive a reimbursement of up to 50% of the trainee's wages when they agree to hire an eligible worker. The dollars received offset the cost of training a new employee the length of the contract. The business provides the training, and the eligible worker does the learning, gaining skills unique to your business and industry needs.

## Why Should You Partner with CMJTS' or Career Solutions' OJT Program?

- Your business is reimbursed for the cost of training a new employee—up to 50% of the new employee's wage for the length of the contract.
- You do the training, and the employee does the learning. Your new hire learns skills unique to your business and industry.
- Central Minnesota Jobs and Training Services, Inc. (CMJTS) or Career Solutions refers candidates to you who have been professionally evaluated. You may also refer candidates to CMJTS or Career Solutions for OJT eligibility.
- You make the hiring decision.
- CMJTS/ Career Solutions employment counselors/ career planners are on call for consultation.



## OJT Guidelines

- Business provides the training and supervision for the new employee.
- OJT contracts can be written for:
  - Permanent, full-time jobs—at least 30 hours a week (seasonal or temporary jobs do not qualify for OJT contracts)
- Trainee must meet OJT eligibility requirements.
- Trainee will earn industry-recognized credential.
- OJT is approved by CMJTS or Career Solutions before the employee starts the job.



*"Woodcraft was looking for hard working and dedicated workers and Career Solutions was able to provide 9 OJT candidates in helping us fill those roles. They reached out to us and helped us set up interviews for the candidates and get them on board. Thank you, Career Solutions!"*

*-Mellissa, Human Resources, Woodcraft Industries, St. Cloud*

Call or email now for more information!

Stearns & Benton Counties  
Angie Dahle  
320.308.5334  
[angie.dahle@csjobs.org](mailto:angie.dahle@csjobs.org)

Chisago, Isanti, Kanabec, Mille Lacs & Pine Counties  
Rebecca Perrotti  
612.247.9319  
[rperrotti@cmjts.org](mailto:rperrotti@cmjts.org)

Sherburne & Wright Counties  
Tim Zipoy  
612.325.7791  
[tzipoy@cmjts.org](mailto:tzipoy@cmjts.org)

Kandiyohi, McLeod, Meeker & Renville Counties  
Bridget Paulson  
320.290.7685  
[bpaulson@cmjts.org](mailto:bpaulson@cmjts.org)



**CMJTS**

Central Minnesota Jobs and Training Services, Inc.





# Changing Manufacturing through Automation: Ridgewater Adapts to Meet Industry Needs

The need for well-trained technical craftspeople is at an all-time high. As Minnesota's K-12 schools lead the way in Science, Technology, Engineering, Art, and Math (STEAM) skills and development, Ridgewater continues to adapt and make changes to take those students to the next level.

With the Manufacturing Automation Technologies program, students can make their way from tinkering with robots to starting a career that has them earning competitive wages – all in just one year. The recently revamped program allows students to take the express lane into industry. It includes instruction in mechanical systems, fluid power, Programmable Logic Controllers (PLCs), and robotics. Students also develop multidisciplinary trade skills throughout the curriculum that are vital to workplace success.

After completing the diploma, students are ready to enter industry with an elite combination of knowledge and skills that are must haves in new employees. In Minnesota, one in seven people work in manufacturing – over 330,000, according to the MN Department of Employment and Economic Development. Manufacturing jobs pay \$250-\$400 more per week than the statewide average wage, as well.

Ridgewater graduates succeed in jobs as automation or robotics technicians in advanced manufacturing facilities. Common positions and fields graduates are hired into include:

- Automated systems maintenance
- Machine build technician
- Process support engineer
- Product, system, or facilities planning, installation and support
- Industrial applications and sales

Currently, job placement from Ridgewater's program is 100% - there are more jobs than graduates available. While this is great for students, it's a challenge for employers. It's one reason why work is underway to offer an updated 2-year AAS degree in Manufacturing Automation Technology. Ridgewater anticipates this new offering will be available starting fall 2023. Once finalized, students seeking more education will have an additional option, and employers will have access to graduates with even more skills.



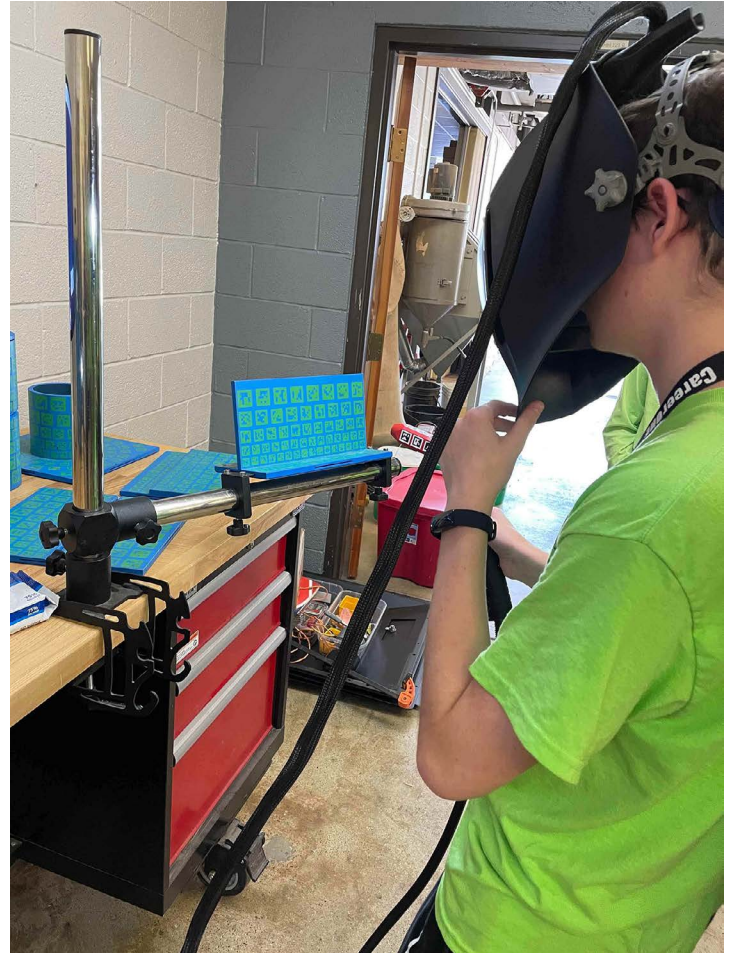
In addition to the core classes offered in the Manufacturing Automation diploma, the degree will incorporate additional technical electives, as well as liberal arts and science courses to help students further develop the essential interpersonal and soft skills many employers seek.

To learn more about the Manufacturing Automation Technologies program, as well as all of Ridgewater's advanced manufacturing programs, visit [ridgewater.edu/academics](http://ridgewater.edu/academics).

## Ridgewater's Advanced Manufacturing Programs

- Manufacturing Automation Technologies
- Computer Aided Drafting and Design
- Machine Tool Technology
- Nondestructive Testing
- Welding





## CareerONE and Manufacturing

Stepping into the world of careers with so many options can be overwhelming. Exploring and learning the skills needed to get that dream job and keep it is the focus of the CareerONE summer work readiness program—the program offered by Career Solutions and Friends of Career Solutions. Manufacturing and construction, healthcare, and early childhood development are explored to help teens find the right fit. Explore jobs while increasing math and reading scores, learn financial skills, and practice interview skills. Train at the St. Cloud Technical & Community College and tour area manufacturers. And all while earning college credits, certifications, and a stipend of \$1,020 for the 5-week St. Cloud CareerONE program. It's intensive, it's life changing, and it's fun. The program is held each year in June and July in St. Cloud. A two-week program with a \$510 stipend, held in Paynesville, Melrose, and Sauk Centre, is held in July.

### For more information contact:

Contact Jacob Kaduk at [jacob.kaduk@csjobs.org](mailto:jacob.kaduk@csjobs.org) for information.

Website: <https://careersolutionsjobs.org/job-seekers/youth-programs/careerone/>





# CAREER PATHS IN MANUFACTURING

## 4-YEAR OR MORE COLLEGE DEGREE AND/OR EQUIVALENT EXPERIENCE

Civil Engineer

**\$47.87**

Mechanical Engineer

**\$39.76**

Industrial Engineer

**\$48.52**

## 1-2 YEAR COLLEGE DEGREE (OR CREDENTIAL)

Electrical and Electronics  
Engineering Technician

**\$30.89**

Industrial Engineering  
Technician

**\$30.24**

Machinist

**\$24.60**

## HIGH SCHOOL DIPLOMA OR GED / ON-THE-JOB TRAINING

First-line Supervisor  
of Production and  
Operating Workers  
**\$31.29**

Food Batchmaker  
**\$18.47**

Welder, Cutter,  
Solderer, and Brazier  
**\$23.93**

## WHY CHOOSE A CAREER IN MANUFACTURING?

The manufacturing industry is one of the largest and most influential sectors of the United States economy. Manufacturing provides just over 10% of total private sector jobs in the U.S., making it the third-largest industry in terms of employment. In Minnesota, Manufacturing accounts for 13% of private sector employment, ranking second. Wages in Manufacturing are 10% higher than the total of all industries.

Provided for you by the Minnesota  
Rural Career Counseling  
Coordinators (RC3 Grant)

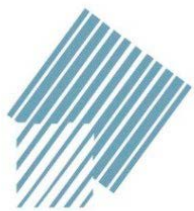


**CareerForce™**

*It's your state of success*

A proud partner of the **americanjobcenter** network

These jobs are in demand in Minnesota and these are Minnesota median wages. Data collected from Department of Employment and Economic Development.



SOUTHWEST INITIATIVE  
FOUNDATION



Our vision is a  
southwest Minnesota where  
*ALL PEOPLE THRIVE.*

Help us see it through!



Join our work in:

- Economic development
- Community impact
- Giving



[swifoundation.org](https://swifoundation.org)

800-594-9480 | [info@swifoundation.org](mailto:info@swifoundation.org)  
15 3<sup>rd</sup> Avenue NW, Hutchinson, MN 55350

*An Equal Opportunity Provider and Employer*



Excellence. Accountability. Impact.™



# MAHOWALD

## More Than Insurance

Your Experts for Casualty Services  
and Work Comp

Mahowald takes insurance beyond basic protection by providing you with a tailored team to celebrate your successes and proactively monitor your needs.

More than just coverage, we offer guidance and support through life's many changes.



CONTACT US TODAY

[www.mahowald.net](http://www.mahowald.net) | (320) 251-3751

Discover  
East Central  
Minnesota

GPS:45:93  
YOUR POINT OF OPPORTUNITY.

f in YouTube

[www.gps4593.com](http://www.gps4593.com)

With strong technical training options, schools that are well-integrated with the workforce, and a highly mobile population with high commute rates, our growing communities provide a foundation for future workforce expansion.



## ST. CLOUD STATE UNIVERSITY

COLLEGE OF SCIENCE AND ENGINEERING

### Degree Programs in:

Construction Management  
Technology Education  
Manufacturing Engineering Technology  
Environmental Science  
Environmental Studies  
Master's in Technology Education

### TEC Network (Technology, Engineering & Careers)

K-12 outreach program supports Technology & Engineering Education, Career & Technical Education (CTE) and STEM programs around the state. This has been in partnership with several companies, Central Minnesota Manufacturing Association (CMMA), school districts, and SCSU alumni. The program brings advanced equipment (laser engravers, CNC equipment, 3D printers, virtual welders, virtual painter, robotic brick layer, etc.) to over 40 schools serving more than 15,000 students each year. In addition to equipment, this program supports requests for teacher professional development, program development, program review in schools districts, support of facilities modifications and additions.

For more information contact Kurt helgeson: [krhelgeson@stcloudstate.edu](mailto:krhelgeson@stcloudstate.edu)



ENVIRONMENTAL AND  
TECHNOLOGICAL STUDIES  
ST. CLOUD STATE UNIVERSITY.

[www.stcloudstate.edu/ETS](http://www.stcloudstate.edu/ETS)  
[ets@stcloudstate.edu](mailto:ets@stcloudstate.edu)





# A community bank rooted in supporting local industry.



- Equipment Financing
- Preferred SBA Lender
- Experienced Bankers
- Personal Relationships

***No matter the need, you can bank on us!***

Over 250 years of collective experience financing the Central Minnesota manufacturing industry.

St. Cloud | Richmond | Foley | Maple Grove | Ham Lake | Isanti

[www.FalconNational.com](http://www.FalconNational.com)



**CHISAGO COUNTY  
— HRA-EDA —**  
*A Natural Resource for Business*

## Find your career in Chisago County!

Our 2022 Labor Analysis shows that many people are coming to work in Chisago County from surrounding counties. Avoid the metro traffic and improve your quality of life here in Chisago County!

Many manufacturing businesses in the area looking to hire positions such as:

**ENGINEERING \* MACHINIST \* IT  
MANAGEMENT \* ASSEMBLY \* CNC**

To learn more about available jobs in the county, please visit our website: [www.chisagocounty.org/labor-force/](http://www.chisagocounty.org/labor-force/)

38871 7th Ave \* PO Box 815 \* 651.674.5664 \* [info@chisagocounty.org](mailto:info@chisagocounty.org)



A Non-Profit Partnership for area businesses throughout the County working together to enhance the economic vitality of our region.

WCEDP aims to create a healthy and diverse environment for new and existing businesses and to increase job opportunities in Wright County.

To learn more about what WCEDP has to offer go to [www.wrightpartnership.org](http://www.wrightpartnership.org) or call 763-496-5632.

### A Few Of Our Current Initiatives



Creating Entrepreneurial Opportunities (CEO) is a successful class for High School Jr's. & Sr's. offered through the Wright Tech. Center for students who are interested in starting their own business.



Workforce Pathways mission is to identify and assist Wright County businesses with their workforce needs to create a long term vibrant community through education, training, marketing and collaboration.

## AHEAD OF THE CURVE.

Manufacturing Business Advisory Team



LEE EILERS, BUSINESS ADVISOR



STEVE LEEN, CPA, SHAREHOLDER



GREG HOFFMAN, CHANNEL SALES LEADER  
MANUFACTURING & DISTRIBUTION

**bergankDV**

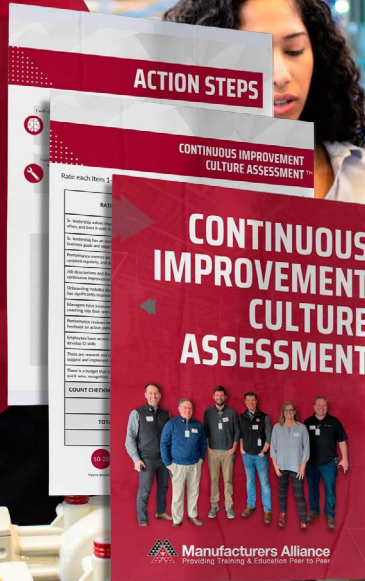
IT'S NOT A SERVICE. **IT'S A FEELING.**  
[bergankdv.com](http://bergankdv.com) | #STARTHERE



# CONTINUOUS IMPROVEMENT CULTURE ASSESSMENT

Find the cracks in your culture of continuous improvement and learn how to fill them.

**FREE DOWNLOAD >**



SCAN THE QR CODE



[www.mfrall.com/culture](http://www.mfrall.com/culture)

## Thank you

to everyone who made this magazine possible!

### Platinum



### Elite gold



### Gold



### Silver



### Bronze

