

INFECTIOUS DISEASE PREVENTION:  
SARS-COV-2 VIRUS THAT CAUSES COVID-19  
16 VAC 25-220

EMERGENCY  
TEMPORARY STANDARD

[WWW.DOLI.VIRGINIA.GOV](http://WWW.DOLI.VIRGINIA.GOV)

7/27/20

# CONTACT

Jennifer Rose, CSP

VOSH Cooperative Programs Director

Virginia Department of Labor and Industry

[jennifer.rose@doli.virginia.gov](mailto:jennifer.rose@doli.virginia.gov)

## WHY AND WHO IT APPLIES TO

- **Prevent the spread of the virus**
- **Applies to every place of employment with in the jurisdiction of the VOSH program**
- **Based on exposure risk levels based on hazards present or job tasks and defined as Very High, High, Medium, and Lower.**



*The four exposure risk levels represent probable distribution of risk.*

# DATES

## Training Dates - Very high, High, and Medium

- General training within **30 days**
- Lower – exempt but must provide employees with basic written or oral info on hazards and measures to minimize exposure

## Infectious Disease Preparedness and Response Plan Dates

- Very high, High, Medium – need plan and train within **60 days**

# **PROTECT YOUR EMPLOYEES**

## **COVID-19**

Take actions every day to help prevent the spread of COVID-19

# PROTECT YOUR EMPLOYEES

- Social Distancing
- Self monitoring
- Post signs
- Offer disposable face masks
- PPE
- Clean and Disinfect Training
- Prohibit infected workers

# EXPOSURE RISK LEVELS

## **LOWER RISK**

- Do not require contact inside six feet
- Minimal occupational contact
- Or can achieve minimal occupational contact

# EXPOSURE RISK LEVELS

## **MEDIUM RISK:**

Require more than minimal occupational contact inside six feet

waiters, grocery store workers, agricultural workers, construction workers, domestic service workers, hairdressers, fitness instructors, workers in poultry and meat processing facilities, manufacturing workers, and healthcare workers in settings without known or suspected sources of COVID-19



# EXPOSURE RISK LEVELS

## **HIGH RISK:**

- **high potential for employee exposure inside six feet**
- hospital workers, first responders, medical transport providers, mortuary services workers, medical and dental staff, non-medical support staff, long term care facility staff, home healthcare workers, etc.

# EXPOSURE RISK LEVELS

## **VERY HIGH RISK:**

high potential for employee exposure inside six feet

performing specific medical (e.g., aerosol generating procedures), postmortem, or laboratory procedures with specimens from an individual

# DETERMINING EXPOSURE RISK LEVEL

Tasks

Work environment

Presence of the virus

# employees/size of area

Working distances

Duration and frequency of exposure

Hazards encountered



# REQUIREMENTS

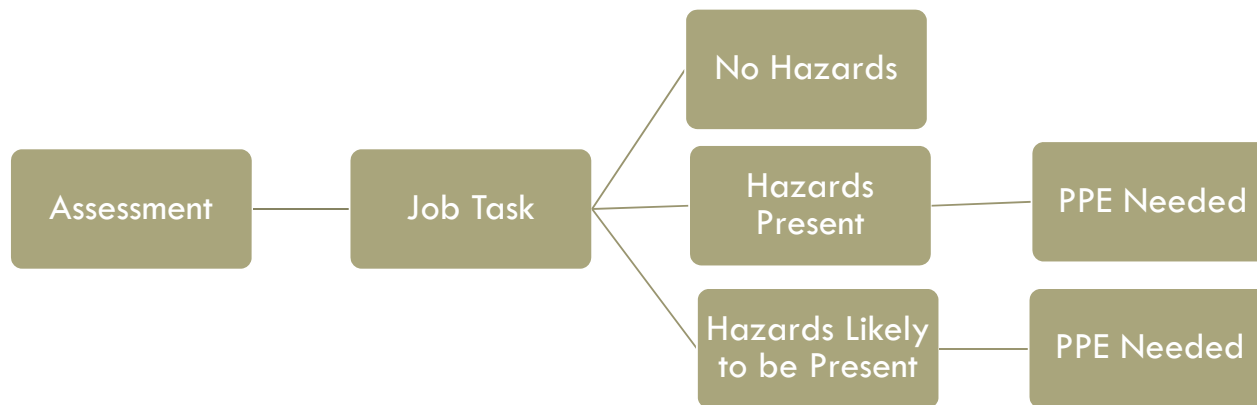
- **Very high, high or medium**
- Training
  - Requirements of the standard
  - Characteristics and methods of the spread
  - Risk factors
  - Awareness of transmission
  - Safe & Health Work Practices
- PPE
- Anti-discrimination
- Infections Disease Preparedness and Response Plan

# REQUIREMENTS

- Sick leave, telework, staggered shifts
- Families First Coronavirus Response Act
- Provide policy
  - Self reporting and monitoring
  - Reporting positive test results
  - Notification of positive test to all exposed employees
- Return to work procedures

# PPE ASSESSMENT

- Assess Hazards
- Select PPE
- Uses/ Cleaning/Storage/Fit



# PPE ASSESSMENT

STEP 1: Inform affected employees of the process

Step 2: Review data

Step 3: Conduct a walk-through survey

Step 4: Determine the hazard risk level

Step 5: Determine Controls to protect against COVID-19

Step 6: Make Document Accessible

Step 7: Reassess the workplace as necessary by identifying and evaluating

**COVID-19 HAZARD ASSESSMENT**

Evaluator:

Department/Division:

Date:

<i>Job Task/Employee/Job Category</i>			
<i>Check the appropriate box for each hazard:</i>	<i>Description of hazard(s):</i>	<i>Engineering/Administrative Controls</i>	<i>PPE</i>
Very High			
High			
Medium			
Lower			
<i>Job Task/Employee/Job Category</i>			
<i>Check the appropriate box for each hazard:</i>	<i>Description of hazard(s):</i>	<i>Engineering/Administrative Controls</i>	<i>PPE</i>
Very High			
High			
Medium			
Lower			
<i>Job Task/Employee/Job Category</i>			
<i>Check the appropriate box for each hazard:</i>	<i>Description of hazard(s):</i>	<i>Engineering/Administrative Controls</i>	<i>PPE</i>
Very High			
High			
Medium			
Lower			
<i>Job Task/Employee/Job Category</i>			
<i>Check the appropriate box for each hazard:</i>	<i>Description of hazard(s):</i>	<i>Engineering/Administrative Controls</i>	<i>PPE</i>
Very High			
High			
Medium			

# PPE ASSESSMENT



# SOCIAL DISTANCING



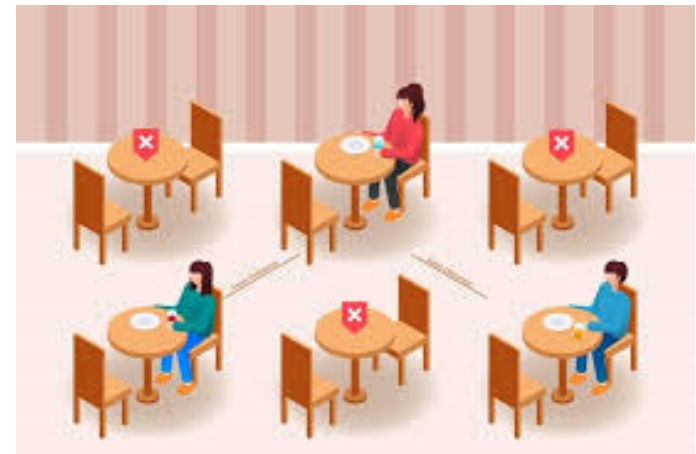
# PHYSICAL DISTANCING REQUIREMENTS

- Announcements, signage, or visual cues
- Decrease worksite density
- Controlled Access



# COMMON AREAS - PHYSICAL DISTANCING

- Entrance Posting
  - Occupancy of the space;
  - physical distancing;
  - washing/hand sanitizing;
  - Cleaning and disinfecting of shared surfaces.



# CLEANING

Clean and disinfect high touch areas

<https://www.epa.gov/pesticide-registration/list-n-disinfectants-use-against-sars-cov-2-covid-19>



# WEAR

Wear a face covering/surgical mask/respirator

Dependent on Hazard Exposure Level



# INFECTIOUS DISEASE PREPAREDNESS & RESPONSE PLAN

Very high, and high

Medium with 11 or more  
employees

Person  
responsible for implementing

Webpage Guidance Document

# INFECTIOUS DISEASE PREPAREDNESS & RESPONSE PLAN

The plan shall contain:

- The name(s) or titles(s) of the person(s) responsible for administering the Plan
- Provide for employee involvement
- Exposure Risk Level

# INFECTIOUS DISEASE PREPAREDNESS & RESPONSE PLAN

The plan shall contain:

- Where, how, and what sources
- Engineering Controls
- Administrative Controls
- Work practices
- PPE



# INFECTIOUS DISEASE PREPAREDNESS & RESPONSE PLAN

The plan shall contain:

- Contingency plans for outbreaks
  - Employee absenteeism;
  - Control Measures
  - Reduced workforce
  - Supply Chains Interrupted

# INFECTIOUS DISEASE PREPAREDNESS & RESPONSE PLAN

The plan shall contain:

- Infection prevention
  - Hand washing
  - Housekeeping
  - Visitor education

# INFECTIOUS DISEASE PREPAREDNESS & RESPONSE PLAN

The plan shall contain:

- Identification and isolation
- Reporting when they are experiencing symptoms of COVID-19.
- Subcontractors

# INFECTIOUS DISEASE PREPAREDNESS & RESPONSE PLAN

The plan shall contain:

- CDC guidelines or Commonwealth of Virginia guidance documents
- Mandatory of Virginia Executive Orders

# QUESTIONS?

VOSH Consultation

<https://www.doli.virginia.gov/vosh-programs/consultation/>

[jennifer.rose@doli.virginia.gov](mailto:jennifer.rose@doli.virginia.gov)

<https://www.doli.virginia.gov/vosh-programs/coronavirus-covid-19-resources/>

[covid19questions@doli.virginia.gov](mailto:covid19questions@doli.virginia.gov)

<https://www.osha.gov/pls/osha7/eComplaintForm.html>

