

**DEMOGRAPHIC & SOCIO-ECONOMIC ESTIMATES**  
 (updated to reflect Census 2010)  
**ZIP Code 92028**



**POPULATION**

	Apr. 1, 2010
<b>Total Population</b>	<b>46,310</b>
Household Population	46,043
Group Quarters Population	267

**Persons per Household** **2.85**

**HOUSING AND OCCUPANCY**

	Total Housing Units	Occupied Households	Vacancy Rate
<b>Total Housing Units</b>	<b>17,052</b>	<b>16,131</b>	<b>5.4%</b>
Single Family - Detached	12,589	11,941	5.1%
Single Family - Multiple-Unit	749	709	5.3%
Multi-Family	2,785	2,600	6.6%
Mobile Home and Other	929	881	5.2%

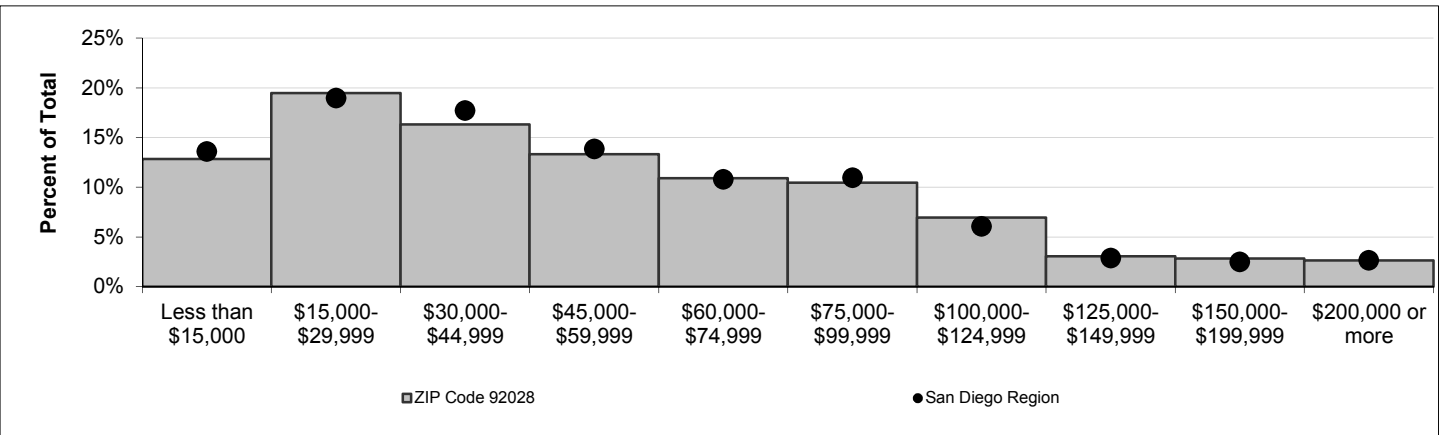
**HOUSEHOLD INCOME**

**Households by Income Category (1999 dollars, adjusted for inflation)**

	Less than \$15,000	\$15,000- \$29,999	\$30,000- \$44,999	\$45,000- \$59,999	\$60,000- \$74,999	\$75,000- \$99,999	\$100,000- \$124,999	\$125,000- \$149,999	\$150,000- \$199,999	\$200,000 or more
<b>% of Total</b>	<b>13%</b>	<b>19%</b>	<b>16%</b>	<b>13%</b>	<b>11%</b>	<b>10%</b>	<b>7%</b>	<b>3%</b>	<b>3%</b>	<b>3%</b>

**Median Household Income**

	2010
Adjusted for inflation (1999 \$)	\$45,896
Not adjusted for inflation (current \$)	\$64,347



**IMPORTANT ADVISORY:**

These data are annual estimates that have been updated to reflect Census 2010.

Some data may not match information published by the U.S. Census Bureau. Minor adjustments were made (such as correcting the location of housing units that were erroneously allocated by the Census Bureau to roads and open space) to more accurately reflect the region's true population and housing distribution.

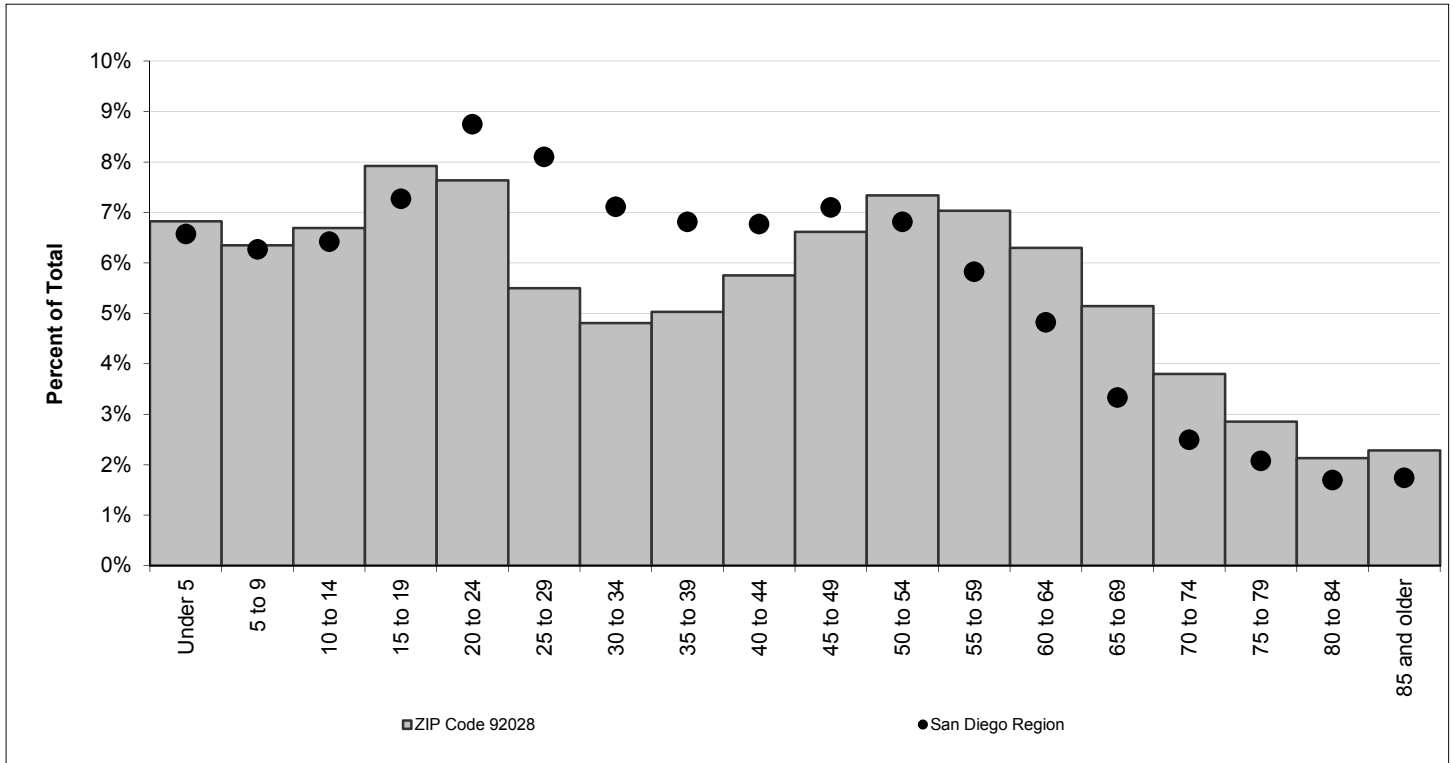
In addition, Census 2010 does not include information about structure type or household income. Those details are developed from other sources, including the California Department of Finance E-5 estimates for cities and the County of San Diego; San Diego County Assessor Records, vital events records from the California Department of Health, and income data from the U.S. Census Bureau American Community Survey.

Caution should always be taken when using data for small population groups, particularly at small levels of geography.

## POPULATION BY GENDER AND AGE

	Total	Male	Female	Percent Female
<b>Total Population</b>	<b>46,310</b>	<b>23,148</b>	<b>23,162</b>	<b>50%</b>
Under 5	3,160	1,583	1,577	50%
5 to 9	2,941	1,485	1,456	50%
10 to 14	3,098	1,583	1,515	49%
15 to 17	2,225	1,165	1,060	48%
18 and 19	1,442	753	689	48%
20 to 24	3,535	1,925	1,610	46%
25 to 29	2,546	1,368	1,178	46%
30 to 34	2,225	1,104	1,121	50%
35 to 39	2,330	1,108	1,222	52%
40 to 44	2,664	1,327	1,337	50%
45 to 49	3,062	1,461	1,601	52%
50 to 54	3,397	1,690	1,707	50%
55 to 59	3,258	1,537	1,721	53%
60 and 61	1,175	582	593	50%
62 to 64	1,741	872	869	50%
65 to 69	2,383	1,178	1,205	51%
70 to 74	1,760	893	867	49%
75 to 79	1,323	655	668	50%
80 to 84	987	474	513	52%
85 and older	1,058	405	653	62%
Under 18	11,424	5,816	5,608	49%
65 and older	7,511	3,605	3,906	52%
Median age	39.3	37.7	40.6	-

## POPULATION BY AGE



## POPULATION BY RACE, ETHNICITY AND AGE

	Non-Hispanic					
	Hispanic	White	Black	American Indian	Asian & Pacific Isl.	Other
<b>Total Population</b>	<b>17,220</b>	<b>26,187</b>	<b>542</b>	<b>342</b>	<b>1,122</b>	<b>897</b>
Under 5	1,884	1,092	34	51	57	42
5 to 9	1,388	1,294	53	45	88	73
10 to 14	1,929	1,105	7	25	11	21
15 to 17	1,078	1,011	17	13	38	68
18 and 19	777	561	18	12	33	41
20 to 24	1,543	1,709	136	27	74	46
25 to 29	1,364	1,055	47	16	46	18
30 to 34	898	1,097	33	26	98	73
35 to 39	1,152	1,013	32	14	69	50
40 to 44	1,412	1,191	8	10	33	10
45 to 49	1,080	1,821	13	14	86	48
50 to 54	698	2,556	14	25	61	43
55 to 59	660	2,510	10	11	39	28
60 and 61	162	852	21	11	66	63
62 to 64	252	1,411	9	9	30	30
65 to 69	186	2,033	21	10	76	57
70 to 74	310	1,363	17	4	33	33
75 to 79	197	1,041	20	5	35	25
80 to 84	109	723	10	7	69	69
85 and older	141	749	22	7	80	59
Under 18	6,279	4,502	111	134	194	204
65 and older	943	5,909	90	33	293	243
Median age	25.0	50.3	25.6	24.6	45.8	45.7