



# ACEC

## **2021-2022 Directory of ACEC/NC Member Firms**

### **ACEC/NC MISSION STATEMENT**

ACEC/NC is the premier organization in North Carolina that represents the business interests of the engineering industry in our state. ACEC/NC's mission is to promote the business interests of engineering companies by providing legislative advocacy and business services.

American Council of Engineering Companies of North Carolina  
150 Fayetteville Street, Suite 1340  
Raleigh, NC 27601  
(919) 781-7934  
[info@acecnc.org](mailto:info@acecnc.org)



## Contact Information

**Wells Fargo Capital Center  
150 Fayetteville Street  
Suite 1340  
Raleigh, NC 27601**

**Tel: (919) 781-7934**

**Fax: (919) 781-7319**

**[www.acecnc.org](http://www.acecnc.org)  
[info@acecnc.org](mailto:info@acecnc.org)**

**James Smith, P.E.**  
Executive Director  
[jsmith@acecnc.org](mailto:jsmith@acecnc.org)

**Fred Burchett, P.E.**  
Director of Member Recruitment & Retention  
[fburchett@acecnc.org](mailto:fburchett@acecnc.org)

**Jessica Hartong, CMP**  
Director of Events & Conferences  
[jhartong@acecnc.org](mailto:jhartong@acecnc.org)

**Meredith Houston, CAE**  
Director of Operations  
[mhouston@acecnc.org](mailto:mhouston@acecnc.org)

**Tammy Bromley**  
Office Manager  
[tbromley@acecnc.org](mailto:tbromley@acecnc.org)

# 2021 - 2022 Board of Directors



**Paul Meehan, P.E.**  
President  
HDR



**Elizabeth Phipps, P.E.**  
President-Elect  
KCI Associates



**Mike Slusher, P.E.**  
Vice-President  
Davis-Martin-Powell & Associates, Inc.



**Stephen Greene, P.E.**  
Secretary/Treasurer  
Ramey Kemp Associates



**Scott Hinesley, P.E., RRC**  
National President  
REI Engineers, Inc.



**Iona Thomas, AICP**  
Director  
McAdams Company



**Kraig Kern, CPSM**  
Director  
W.K. Dickson & Co., Inc.



**Eric Olsen, P.E.**  
Director  
The Wooten Company



**Matthew Fogleman, P.E.**  
Director  
ECS Southeast



**Michael L. Holder, P.E.**  
Director  
Gannett Fleming



**Will Letchworth, P.E.**  
Director  
WSP, USA



**Jim Smith, P.E.**  
Executive Director  
ACEC/NC

# 2021 - 2022 Board of Directors

## Executive Committee

### **PRESIDENT:**

**Paul Meehan, P.E.**  
HDR  
555 Fayetteville Street, Suite 900  
Raleigh, NC 27601  
Tel: (919) 232-6611  
Email: paul.meehan@hdrinc.com

### **PRESIDENT ELECT**

**Elizabeth Phipps, P.E.**  
KCI Associates of NC, PA  
4601 Six Forks Road, Suite 220  
Raleigh, NC 27609  
Tel: (919) 783-92141  
Email: liz.phipps@kci.com

### **VICE PRESIDENT**

**Mike Slusher, P.E.**  
Davis-Martin-Powell & Associates, INC  
6415 Old Plank Road  
High Point, NC 27265  
Tel: (336) 886-4821  
Email: mslusher@dmp-inc.com

### **SECRETARY/TREASURER**

**Stephen Greene, P.E.**  
Ramey Kemp Associates  
5808 Farington Place, Ste. 100  
Raleigh, NC 27609  
Tel: (919)872-5115  
Email: sgreene@rameykemp.com

### **NATIONAL DIRECTOR:**

**Scott Hinesley, P.E., RRC.**  
REI Engineers  
1927 JN Pease Pl., Suite 201  
Charlotte, NC 28262  
Tel: (704) 596-0331  
Email: shinesley@reiengineers.com

## Directors

**Iona Thomas, AICP**  
McAdams Company  
2905 Meridian Parkway  
Durham, NC 27713  
Tel: (919) 361-5000  
Email: thomas@mcadamsco.com

**Kraig Kern, CPSM**  
WK Dickson & Co., Inc.  
1213 W. Morehead St.  
Ste 300  
Charlotte, NC 28208  
Tel: (704) 334-5348  
Email: kckern@wkdickson.com

**Eric Olsen P.E.**  
The Wooten Company  
120 N. Boylan Av.e  
Raleigh, NC 27603  
Tel: (919) 828-0531  
Email: eolsen@thewootencompany.com

**Matt Fogleman, P.E.**  
New 2 year term  
ECS Southeast, LLP  
1900 Hendersonville Rd., #10  
Asheville, NC 28803  
Tel: (828) 665-2307  
Email: mfogleman@ecslimited.com

**Michael L. Holder, P.E.**  
New 2 year term  
Gannett Fleming  
One Glenwood Ave.  
Ste 900  
Raleigh, NC 27603  
Tel: (919) 420-7660  
Email: mholder@gfnet.com

**Will Letchworth, P.E.**  
New 2 year term  
WSP USA  
434 Fayetteville St.  
Ste 1500  
Raleigh, NC 27601  
Tel: (919) 678-0035  
Email: Will.Letchworth@wsp.com

# Table of Contents

<b>ACEC/NC Contact Information</b>	<b>Page i</b>
<b>ACEC/NC Standing Events &amp; ACEC National Conferences</b>	<b>Page 2</b>
<b>2021 EEA Awards</b>	<b>Page 4</b>
<b>ACEC National Executive Committee</b>	<b>Page 6</b>
<b>Member Firm Fields of Practice</b>	<b>Page 7</b>
<b>Member Firm Information</b>	<b>Page 9</b>
<b>ACEC/NC Committees and Forums</b>	<b>Page 36</b>
<b>Qualifications-Based Selection of Design Professionals</b>	<b>Page 40</b>
<b>3-Step QBS Process</b>	<b>Page 42</b>
<b>Who We Are and the Benefits of Membership</b>	<b>Page 50</b>
<b>ACEC/NC Index of Member Firms</b>	<b>Page 52</b>
<b>Appendix A</b>	<b>Page 54</b>

Please refer to the ACEC/NC website, [www.acecnc.org](http://www.acecnc.org), to find information regarding:

- Details & registration information for ACEC/NC Seminars & Membership Meetings
- Membership application forms
- Current & previous issues of the ACEC/NC newsletter
- ACEC/NC Constitution, Rules & Bylaws
- Information about the “ACEC NC/PAC” and “Engineering Companies for North Carolina” Independent Expenditure Account.
- Discussion groups for committees and forums

# ACEC/NC 2021-2022 Standing Events

## JUNE

- June 21 **ECNC Education & Advocacy Fundraising Event**  
Prinehurst, NC
- June 28 **ACEC/NC Legislative Golf Tournament**  
Prestonwood CC Cary, NC

## JULY

- July 5 HOLIDAY - OFFICE CLOSED
- July 29-31 **ACEC/NC Summer Conference**  
Wrightsville Beach, NC

## SEPTEMBER

- September 6 HOLIDAY - OFFICE CLOSED
- September 20 **Business Practices Expo**  
McKimmon Center, Raleigh, NC
- September 22 **ACEC/NC Reception**  
Washington, DC

## OCTOBER

- October 20-21 **Transportation Conference**  
Raleigh Convention Center, Raleigh, NC

## NOVEMBER

- November 8 **B&I Symposium**  
Raleigh, NC
- November 11 **Engineering Excellence Awards**  
Pinehurst, NC
- November 25-26 HOLIDAY - OFFICE CLOSED

## DECEMBER

- December 9 **Member Reception**  
Charlotte, NC
- December 16 **Holiday Party & ACEC/PAC Auction**  
Sheraton Raleigh, NC
- December 24 HOLIDAY - OFFICE CLOSED
- December 31 HOLIDAY - OFFICE CLOSED

## 2022 JANUARY

- January 13 **Breakfast with the Board**  
Winston-Salem, NC

## FEBRUARY

- February 10 **Love Your PAC Reception**
- February 17 **Environmental & Energy Symposium**  
Raleigh, NC

## MARCH

- March 16 **Pitch FORE the PAC**  
Charlotte, NC

## APRIL

- TBA **Clay Shoot - Fundraiser for the State PAC**  
Raleigh, NC

## MAY

- May 24-25, All Day **Consulting Congress Days**  
Washington, DC

## ACEC/National Conference Schedule through 2024

DATE	LOCATION	CITY
October 27-30, 2021	JW Marriott Marco Island Beach Resort	Marco Island, FL
May 22-25, 2022	Grand Hyatt Washington	Washington, D.C.
October 16-19, 2022	The Broadmoor	Colorado Springs, CO
June 11-14, 2023	Grand Hyatt Washington	Washington, D.C.
October 15-18, 2023	JW Marriott Austin	Austin, TX
May 12-15, 2024	Grand Hyatt Washington	Washington, D.C.
October 20-23, 2024	Hyatt Regency	New Orleans, LA



# ACEC

## **Engineering Excellence Awards**

*Since 1967, U.S. engineering firms have entered their most innovative projects and studies in ACEC's annual Engineering Excellence Awards program (EEA)—"the Academy Awards of the engineering industry"—honoring the year's most outstanding engineering accomplishments. Projects that are winners at state level EEA competitions are eligible for ACEC's national EEA competition.*

*The projects are then judged by a distinguished panel of judges representing a cross section of industry, government, academia and media to rank the submissions on engineering excellence. Projects from throughout the world are rated on the basis of uniqueness and innovative applications; future value to the engineering profession; perception by the public; social, economic, and sustainable development considerations; complexity; and successful fulfillment of client/owner's needs, including schedule and budget.*

# 2021 Engineering Excellence Awards

Each year the American Council of Engineering Companies (ACEC) of North Carolina selects the top project from North Carolina engineering firms to go forward to the national ACEC's annual Engineering Excellence Awards competition. Since 1967, U.S. engineering firms have entered their most innovative projects and studies in ACEC's annual Engineering Excellence Awards program (EEA)—'the Academy Awards of the engineering industry'— honoring the year's most outstanding engineering accomplishments. Projects that are winners at state level EEA competitions are eligible for ACEC's national EEA competition.

*Engineering North Carolina's Future.*

## HENRY J. STIKES GRAND CONCEPTOR AWARD

We gathered virtually for this year's Engineering Excellence Awards where several firms were recognized and awarded for various projects. This year, Stantec was awarded the Grand Conceptor Award for the Riverbend Continuous Flow project. Stantec designed the intersection and obtained an environmental permit for the Continuous Flow Intersection (CFI). The roadway design focused on improving roadway geometry and maintaining pedestrian movements with minimal right-of-way and utility impacts.

Three firms were awarded the competition's second-highest honor.

The recipients of these "GRAND AWARDS" were:

- Freese & Nichols for the "CITY OF FAYETTEVILLE WATERSHED MASTER PLAN PROJECT"
- McKim & Creed for the "LOWER WALNUT CREEK SANITARY SEWER INTERCEPTOR PROJECT"
- Rummel, Klepper & Kahl for the "RODANTHE BRIDGE SEAGRASS RELOCATON PROJECT"

HONORS AWARD recipients are:

- ECS Southeast for the "FORREST HILLS COMMUNITY SLOPE REPAIR" - Swannanoa, NC
  - HDR Engineering for the "I-40 BUSINESS RECONSTRUCTION " - Winston-Salem, NC
- McKim & Creed for "OWASA ADMINISTRATION BUILDING HVACSYSTEM UPGRADE" - Carrboro, NC
  - REI Engineers for "FORT FISHER CONSERVATORY"
- STV, Inc. for "LITTLE SUGAR CREEK TRIBUTARY TO FAIRVIEW STREET AND SANITARY SEWER IMPROVEMENTS"
  - WK Dickson for the "TOWN CREEK CULVERT PROJECT"
- The Wooten Company for "KINGSBORO MEGASITE UTILITIES EXPANSION PROJECT"

The "NC KEYSTONE AWARD" was given to REP. JOHN TORBETT and SENATOR TOM MCINNIS

ACEC/NC annually presents the "Engineering Excellence Awards" to honor and recognize engineering firms located in North Carolina for projects which demonstrate the highest degree of achievement, value and ingenuity.

Congratulations to all of our 2021 winners!



# ACEC/NC Past Presidents, ACEC Fellows & ACEC Life Members

## Past Presidents of ACEC/NC

1968	L. E. Wooten	1983	Ralph L. Whitehead	1998	Robert G. Wright	2013	Valoree K. Eikinas
1969	John D. Watson	1984	James N. Poole	1999	Jesse G. Hite	2014	Jeffery S. Douglas
1970	Irving W. Tourtellot	1985	E. J. Mogilnicki	2000	M. Steve Cavanaugh	2015	Bill S. Hood
1971	Richard H. Moore	1986	Herbert P. McKim Jr.	2001	Stephen J. Criscenzo	2016	Stephanie L. Hachem
1972	Charles A. Purcell, Jr.	1987	Donald H. Kline	2002	Gordon A. Rose	2017	Monty W. Irvin
1973	W. M. Piatt, III	1988	Ralph F. Gordon	2003	Willy E. Stewart	2018	Gary D. Hartong
1974	Robert S. Fullerton	1989	Robert J. Owens	2004	Barbara H. Mulkey	2019	Derek L. Clyburn
1975	Ben R. Huske	1990	D. Franklin Stephenson	2005	David L. Pond	2020	Scott M. Hinesley
1976	T. Curtiss Torrance	1991	Christopher H. Glass	2006	Richard C. Wells		
1977	C. Page Fisher	1992	Larry A. New	2007	Donald B. Chandler		
1978	Robert J. Kimley	1993	M. Frank Tyndal	2008	Kenneth W. Smith		
1979	Evan R. Minier	1994	Robert F. Grimes	2009	Bryan R. Odom		
1980	Charles A. Willis	1995	J. Richard Cottingham	2010	Thomas F. Burchett		
1981	Robert E. Lasater	1996	J. Edward Jenkins	2011	Steven L. Thomas		
1982	James E. Stewart	1997	Michael E. Krannitz	2012	Randall A. Neuhaus		

## ACEC Fellows

M. Steve Cavanaugh, Jr.  
Cavanaugh & Associates, PA  
530 North Trade St., Ste. 302  
Winston-Salem, NC 27010

Richard C. Wells, P.E.  
Kleinfelder  
313 Gallimore Dairy Road  
Greensboro, NC 27409

Stephanie L. Hachem, P.E.  
Kimley-Horn & Associates  
421 Fayetteville Street, Suite 600  
Raleigh, NC 27601

## ACEC Life Fellows

Robert G. Wright, CPA  
708 Blenheim Drive  
Raleigh, NC 27612

Leo A. Santowasso, PE, FACEC  
340 Barton Hills Ct.  
Pinehurst, NC 28374

Donald H. Kline, P.E.  
5301 Sendero Drive  
Raleigh, NC 27612

Joseph E. Hardee, FACEC  
PO Box 25  
Enfield, NC 27823

## ACEC Life Members

William I. Bigger, P.E.  
7205 N. Catamount Court  
Raleigh, NC 27615

Donald H. Kline, P.E.  
5301 Sendero Drive  
Raleigh, NC 27612

Robert L. Martin, P.E., AICP  
805 Merwin Road  
Raleigh, NC 27606

# ACEC/National Executive Committee

**Chair, 2021-2022**

Robin Greenleaf  
Architectural Engineers, Inc.  
63 Franklin St, #5th  
Boston, MA 02110

**Chair-Elect, 2021-2022**

W. Art Barrett, II  
Gannett Fleming  
300 E. Lombard St.  
Suite 840  
Baltimore, MD 21202

**Senior Vice Chair, 2021-2022**

Gary W. Raba  
Raba Kistner, Inc.  
12821 W. Golden Ln.  
San Antonio, TX 78249

**Treasurer, 2020-2022**

Matt Hirst  
CRS Engineers  
4246 S Riverboat Rd, Ste 200  
Salt Lake City, UT 84123

**Vice Chair, 2020-2022**

Ed Alizadeh  
Geotechnology, Inc.  
11816 Lackland Rd.  
Suite 150  
St. Louis, MO 63146

**Vice Chair, 2020-2022**

Michael Cooper  
HED  
26913 Northwestern Hwy.  
Suite 200  
Southfield, MI 48033

**Vice Chair, 2021-2023**

Gary Hartong  
The Wooten Company  
120 N. Boyland Ave.  
Raleigh, NC 27603

**Vice Chair, 2021-2023**

John Rathke  
Mead & Hunt  
1702 Lawrence Dr.  
De Pere, WI 54115

**Vice Chair, 2021-2023**

Melvin Williams  
Terracon  
1814 Reynolds Ave.  
North Charleston, SC 29405

**NAECE President, 2021-2022**

Beth Bauer  
ACEC Indiana  
55 Monument Circle #819  
Indianapolis, IN 46204

**President and CEO**

Linda Bauer Darr  
ACEC/National  
1015 15th St., N.W., 8th Floor  
Washington, DC 20005

# Member Firm Fields of Practice

The American Council of Engineering Companies of North Carolina are qualified to provide services in one or more of the engineering practice areas listed below:

Studies, Research, and Consulting Engineering Services

Building/Technology Systems

Structural Systems

Surveying and Mapping Technology

Environmental

Water and Stormwater

Water Resources

Transportation

Special Projects

Small Projects

Energy

Industrial and Manufacturing Processes and Facilities

Other

On the following pages, member companies are cross-referenced with the practice areas listed above to enable the reader to identify the firms who offer services in these specific areas. See individual member company websites for specific areas of practice and **Appendix A** for a breakdown of sub-areas.

Click on the search field on any of our webpages, search any “Member Firm Practice Area” above, and you will be presented with a list of our members who have identified that term as one of their operations.

**Affiliate/Supplier** members are also identified in the following listing. Affiliate/Supplier members provide professional services or products used in the internal operations of engineering firms.

For more specific information related to services, please consult the company listings in this directory.



# **ACEC/NC Member Firms**



**A. Morton Thomas and Associates, Inc. (AMT)**

6131 Falls of Neuse Road  
Suite 101

Raleigh, NC 27609  
TEL: (800) 881-2545

EMAIL:  
mtuomey@amtengineering.com  
URL: amtengineering.com  
EMPS: 32  
Primary Contact: Nick Ramirez;  
nramirez@amtengineering.com

DESCRIPTION/DISCIPLINES: Civil  
(Transportation); Construction  
Management; Surveying; Other

HEADQUARTERS:  
800 King Farm Blvd, Fourth Floor  
Rockville, MD 20850  
Tel: (301) 881-2545

BRANCHES:  
Delaware, DC, Maryland, NC,  
Pennsylvania, Tennessee, Virginia,  
West Virginia

**Accelerate Engineering, PLLC**

875 Walnut Street, Suite 316  
Cary, NC 27511

TEL: 919-263-5678

EMAIL:  
Gavin.Teng@AccelerateEng.com  
URL: AccelerateEng.com  
EMPS: 3  
Primary Contact: Gavin Teng;  
Gavin.Teng@AccelerateEng.com

DESCRIPTION/DISCIPLINES: Studies,  
Research, and Consulting Engineering  
Services: Basic Research and Studies,  
Project Feasibility Studies/Economic/  
Expert Testimony, Public Outreach/  
Involvement, Value Engineering.  
Transportation: Highways, Basic  
Research and Studies, Public Transit,  
Airports, Marine/Ports, Intermodal  
Facilities.

**ACEC Business Insurance Trust**

Affiliate/Supplier  
3780 Mansell Road, Ste 370  
Atlanta, GA 30022  
TEL: (833) 223-2248  
EMAIL: Jeff.connelly@greyling.com  
URL: acecbit.org  
Primary Contact: Jeff Connelly;  
Jeff.connelly@greyling.com

DESCRIPTION/DISCIPLINES: The  
ACEC Business Insurance Trust (BIT)  
provides the only Business Insurance  
Program endorsed by ACEC. In addition  
to providing Business Insurance, The  
BIT also provides Professional Liability  
and Management Liability Insurance to  
members of ACEC.

**ACEC Life/Health Insurance Trust**

Affiliate/Supplier  
2600 Network Blvd. Suite 230  
Frisco, TX 75034  
TEL: (469) 200-4583  
EMAIL: lana@aceclifehealthtrust.com  
URL: aceclifehealthtrust.com  
Primary Contact: Lana Oxsen  
lana@aceclifehealthtrust.com

DESCRIPTION/DISCIPLINES: The ACEC  
Life/Health Trust provides healthcare  
benefit solutions and services to support  
the business objectives of ACEC member  
firms and the health and wellbeing of  
their employees and families.

**ACEC Retirement Trust**

Affiliate/Supplier  
1510 Woodstock Rd.  
Roswell, GA 30075  
TEL: (248) 535-3300  
EMAIL: BruceMcFarland@acecrt.com  
URL: acecrt.com  
Primary Contact: Lydia Zabrycki;  
Lydia.zabrycki@captrust.com

**ACRO Development Services**

619 S. Cedar St., Suite M  
Charlotte, NC 28202  
TEL: (704) 716-5680  
EMAIL: dburke@acro-ds.com  
URL: acro-ds.com  
Primary Contact: Dave Burke

dburke@acro-ds.com  
DESCRIPTION/DISCIPLINES: Civil  
Engineering and Survey

**Adams & Hodge Engineering, PC**

314 E. Main St.  
Clayton, NC 27520  
TEL: (919) 763-2780  
EMAIL: holland@adamsandhodge.com  
URL: adamsandhodge.com  
EMPS: 9  
Primary Contact: Donnie Adam;  
donnie@adamsandhodge.com

DESCRIPTION/DISCIPLINES: We  
are a Civil Engineering firm located  
in Clayton, NC that specializes in  
residential and commercial land  
development design.

**AECOM**

701 Corporate Center Drive  
Suite 475  
Raleigh, NC 27607  
TEL: (919) 854-6253  
EMAIL: randall.taylor@aecom.com  
URL: aecom.com  
EMPS: 480  
Primary Contact: Greg Watkins;  
Greg.Watkins@aecom.com

DESCRIPTION/DISCIPLINES:  
Architectural/Structural; Civil  
(Environmental); Civil (General  
Municipal); Civil (Transportation);  
Energy; Hazardous Waste; Hydrology;  
Hydrogeology; Industrial; Planning;  
Water; Other

BRANCHES:  
CHARLOTTE  
5925 Carnegie Blvd Suite 370  
Charlotte, NC 28209 TEL: (704) 553-  
6150

CHARLOTTE  
Construction Services  
7207 IBM Drive M/C: CLT-3A Charlotte,  
NC 28262-4307 TEL: (704) 805-2810

CHARLOTTE  
6000 Fairview Rd Ste 200 Charlotte,  
NC 28210  
TEL: (704) 522-0330

**MORRISVILLE**  
1600 Perimeter Park Drive, Suite 400  
Morrisville, NC 27560  
TEL: (919) 461-1100

**RALEIGH**  
Professional Engineering Services  
701 Corporate Center Dr,  
Ste 475  
Raleigh, NC 27607  
TEL: (919) 854-6200

**WILMINGTON**  
201 North Front Street, Suite 509  
Wilmington, NC 28401  
TEL: (910) 763 8063

**Aerial Analytics LLC**

Affiliate/Supplier  
7151 O'Kelly Chapel Rd  
Cary, NC 27519  
TEL: (919) 417-2343  
EMAIL: pnilsen@aerial-analytics.com  
URL: aerial-analytics.com  
Primary Contact: Peter Nilsen  
pnilsen@aerial-analytics.com

**DESCRIPTION/DISCIPLINES:** Aerial Analytics is a remote sensing data collection provider that utilizes advanced UAV-based LiDAR and thermal sensors to inspect, collect, analyze and model natural and man made environments.

**Alley, Williams, Carmen & King, Inc.**

740 Chapel Hill Road  
Burlington, NC 27215  
TEL: (336) 226-5534  
EMAIL: mreich@awck.com  
URL: awck.com  
EMPS: 32  
Primary Contact: Mark Reich  
mreich@awck.com

**DESCRIPTION/DISCIPLINES:** Civil (General Municipal); Civil (Transportation); Hydrology; Mining; Planning; Surveying; Water; Other

**Allied Consulting Engineers, PLLC**

709 E. Catawba St  
Belmont, NC 28012  
TEL: (704) 399-3943

EMAIL: dbelk@allied-engineers.com  
URL: allied-engineers.com  
EMPS: 8  
Primary Contact: Edwin Belk  
dbelk@allied-engineers.com

**DESCRIPTION/DISCIPLINES:** Construction Management; Electrical; Mechanical

**Alpha & Omega Group, PC**  
4601 Lake Boone Trail, Ste 3C  
Raleigh, NC 27607  
TEL: (919) 981-0310  
EMAIL: docampbell@aogroup.com  
URL: aogroup.com  
EMPS: 12  
Primary Contact: Ted Bartelt  
tlbartelt@aogroup.com

**DESCRIPTION/DISCIPLINES:** Architectural/structural; Civil (environmental); Civil (General Municipal); Civil (Structural); Civil (Transportation); Construction Management; Hydrology; Water

**American Engineering Associates - Southeast, PA**

8008 Corporate Center Drive  
Suite 110  
Charlotte, North Carolina 28226  
TEL: 704-375-2438  
EMAIL: cjohnson@american-ea.com  
URL: american-ea.com/  
EMPS: 31  
Primary Contact: Chris Johnson;  
cjohnson@american-ea.com

**DESCRIPTION/DISCIPLINES:** Civil Engineering; Environmental; Planning & Landscape Architecture; Project & Construction Management; Real Estate Due Diligence; Structural Engineering / Facilities; Transportation

**Andrew Consulting Engineers, PC**

3811 Peachtree Avenue, Ste. 300  
Wilmington, NC 28403  
TEL: (910) 202-5555  
EMAIL: neal@andrewengineers.com  
URL: andrewengineers.com  
EMPS: 6  
Primary Contact: Neal Andrew;  
neal@andrewengineers.com

**DESCRIPTION/DISCIPLINES:** Expert Testimony, Value Engineering; Foundations, Buildings, Towers, Stadiums, Seismic Design. Marine/Ports. Recreational Facilities, Program and Construction Management.

**Applied Foundation Testing, PLLC**

4904 Waters Edge Drive, Ste. 284  
Raleigh, NC 27606  
TEL: (919) 803-5891  
EMAIL: jgreis@testpile.com  
URL: www.testpile.com  
EMPS: 1  
Primary Contact: John Greis  
jgreis@testpile.com

**DESCRIPTION/DISCIPLINES:** Civil (Geotechnical)

**Arcadis G&M Of North Carolina, Inc.**

Wade 1 in Wade Office Park  
5420 Wade Park Blvd, Suite 350  
Raleigh, NC 27607  
TEL: (919) 854-1282  
EMAIL: nilesh.surti@arcadis.com  
URL: arcadis.com  
EMPS: 80  
Primary Contact: Nilesh Surti  
nilesh.surti@arcadis.com

**DESCRIPTION/DISCIPLINES:** Infrastructure - Highways and Transit; Infrastructure - Buildings; Water; Environmental

**Areté Engineers**

7668 Valley Boulevard  
Blowing Rock, NC 28605  
TEL: (828) 434-0587  
EMAIL: shawn@areteengineers.com  
URL: areteengineers.com  
EMPS: 10  
Primary Contact: Shawn Ausel  
shawn@areteengineers.com

**DESCRIPTION/DISCIPLINES:** Civil (Geotechnical), Civil (Structure), Civil (Transportations), Construction Management, Hydrology

**ATCS**

100 Regency Forest Drive  
Suite 130  
Cary, NC 27518  
TEL: (919) 439-1622  
EMAIL: mfendrick@atcsplc.com  
URL: atcsplc.com  
EMPS: 5  
Primary Contact: Michael Fendrick  
mfendrick@atcsplc.com

**DESCRIPTION/DISCIPLINES:**  
Construction Services, Emergency Management Services, Environmental Services, Federal Infrastructure, Land Development, Surveying, Transportation Design, Traffic Engineering, Transportation Planning, Water Resources

**BRANCH:**  
VIRGINIA  
2553 Dulles View Drive,  
Suite 300 | Herndon, VA 20171  
P: 703-430-7501  
F: 703-430-0889  
blogsdon@atcsplc.com

**Atkins**

1616 East Millbrook Road  
Suite 160  
Raleigh, NC 27609  
TEL: (919) 424-4520  
EMAIL:  
Jeffrey.Reck@AtkinsGlobal.com  
URL: atkinsglobal.com  
EMPS: 124  
Primary Contact: Courtney Taylor  
courtney.taylor@atkinsglobal.com

**DESCRIPTION/DISCIPLINES:**  
DISCIPLINES: Civil (Environmental); Civil (General Municipal); Civil (Structural); Civil (Transportation); Construction

**ACEC of North Carolina**  
advocates for **ECONOMIC DEVELOPMENT** in every county of our state and lobbies for the competitive programs to grow jobs and the economy.

Management; Energy; Hydrology; Planning; Water; Other

**Atlantec Engineers**

3221 Blue Ridge Rd.  
Suite 113  
Raleigh, NC 27612  
TEL: (919) 571-1111  
EMAIL: david@atlantecengineers.com  
URL: atlantecengineers.com  
EMPS: 11  
Primary Contact: David Whitney  
david@atlantecengineers.com

**DESCRIPTION/DISCIPLINES:** Plumbing, Mechanical, and Electrical consulting engineering

**Aztech Inc.**

3408 Kemble Ridge Drive  
Wake Forest, NC 27587  
TEL: (919) 630-9164  
EMAIL: rstephenson@nc.rr.com  
EMPS: 1  
Primary Contact: Ralph Stephenson  
rstephenson@nc.rr.com

**DESCRIPTION/DISCIPLINES:** Facility Consulting Services



**B2E, Inc.**

800 Park Offices Drive, Suite 3712  
RTP, NC 27709  
TEL: (919) 349-1939  
EMAIL: CWhite@eosremediation.com  
URL: eosremediation.com  
EMPS: 7  
Primary Contact:  
Carolyn White  
CWhite@eosremediation.com

**DESCRIPTION/DISCIPLINES:**  
DISCIPLINES: Civil (Environmental); Computer Applications; Hazardous Waste; Hydrology; Hydrogeology

**Baldwin Design Consultants**

1700-D East Arlington Blvd  
Greenville, NC 27858  
TEL: (252) 756-1390  
EMAIL: dpoaletti@baldwindesignconsultants.com  
URL: baldwindesignconsultants.com  
EMPS: 10  
Primary Contact: Dawn Poaletti  
dpoaletti@baldwindesignconsultants.com

**DESCRIPTION/DISCIPLINES:** Engineering, Surveying, Planning Firm

**Bass, Nixon, and Kennedy, Inc.**

6310 Chapel Hill Road,  
Ste. 250  
Raleigh, NC 27607  
TEL: (919) 851-4422  
EMAIL: larry.nixon@BNKinc.com  
URL: bnkinc.com  
EMPS: 58  
Primary Contact:  
Matthew Burleson  
matt.burleson@bnkinc.com

**DESCRIPTION/DISCIPLINES:**  
DISCIPLINES: Civil (Environmental); Civil (General); Construction Management; Electrical; Energy; Hydrology; Mechanical; Fire Protection; Plumbing; Land Surveying

**BDC**

Affiliate Supplier  
1404 Forest Berry Ct  
Fuquay Varina, NC 27526  
TEL: (919) 271-6780  
EMAIL: bgraham.usa@gmail.com  
URL: http://www.busdevcorpUSA.com  
Primary Contact: Bob Graham  
bgraham.usa@gmail.com

**DESCRIPTION/DISCIPLINES:**  
Management Consulting specializing in staff development and resulting improvements

**Benesch**

8000 Regency Parkway, Suite 175  
Cary, NC 27518  
TEL: (984) 275-2490  
EMAIL: gstewart@benesch.com

URL: benesch.com  
EMPS: 23  
Primary Contact: Greg Stewart  
gstewart@benesch.com

DESCRIPTION/DISCIPLINES:  
DISCIPLINES: Civil (General Municipal),  
Civil (Structural), Civil (Transportation,  
Construction Management, Planning  
and Environmental

**Bolton & Menk, Inc.**  
1960 Premier Drive  
Mankato, Minnesota 56001  
TEL: (507) 625-4171  
EMAIL: Kyler.Bender@bolton-menk.com  
URL: bolton-menk.com  
EMPS: 1  
Primary Contact: Kyler Bender  
Kyler.Bender@bolton-menk.com

DESCRIPTION/DISCIPLINES: Bolton &  
Menk specializes in providing public  
infrastructure solutions. For seven  
decades, we have been committed  
to improving quality of life through  
engineering excellence and client  
satisfaction.

**Borum, Wade and Associates, P.A.**  
621 Eugene Court, Suite 100  
Greensboro, North Carolina 27401  
TEL: (336) 275-0471  
EMAIL: hswade@borum-wade.com  
URL: borum-wade.com  
EMPS: 26  
Primary Contact: Homer Wade  
hswade@borum-wade.com

DESCRIPTION/DISCIPLINES: A civil  
engineering, land planning and  
surveying firm located in Greensboro,  
North Carolina. Established in 1961.

**BREE & Associates, Inc.**  
Highgate Office Center  
5315 Highgate Drive, Ste. 203  
Durham, NC 27713  
TEL: (919) 387-3338  
EMAIL: bree@breeassociates.com  
URL: breeassociates.com  
EMPS: 5

Primary Contact: Robert Lancaster  
bree@breeassociates.com

DESCRIPTION/DISCIPLINES:  
DISCIPLINES: Civil (General Municipal);  
Civil (Transportation); Construction  
Management; Planning; Cost  
Estimating, AutoCADD

**Brown Consultants**  
30 Ben Lippen School Road  
Asheville, NC 28806  
TEL: (828) 350-7685  
EMAIL: jtbrown@brownpa.net  
EMPS: 4  
Primary Contact: Jeffery Brown, PE MCE  
jtbrown@brownpa.net

DESCRIPTION/DISCIPLINES: Civil  
(Environmental), Civil (General  
Municipal), Construction Management,  
Planning, Water



**C2 Engineering Solutions, PLLC**  
1401 Central Ave, Suite 200-J  
Charlotte, NC 28205  
TEL: (540) 314-1578  
EMAIL: ryan@c2e.solutions  
URL: rcengineering.net/  
EMPS: 6  
Primary Contact: Ryan Caya  
rcaya776@gmail.com

DESCRIPTION/DISCIPLINES:  
DISCIPLINES: Electrical; Mechanical

**Cape Fear Engineering**  
151 Poole Road  
Suite 100  
Belville, NC 28451  
TEL: (910) 383-1044  
EMAIL:  
jeff.williams@capefearengineering.com  
URL: capefearengineering.com  
EMPS: 45  
Primary Contact: Jeff Williams  
jeff.williams@capefearengineering.com

DESCRIPTION/DISCIPLINES:  
DISCIPLINES: Civil (Environmental); Civil  
(Structural); surveying; GEOTechnical,  
and Architectural services

**Carolinas Geotechnical Group, PLLC**  
2400 Crownpoint Executive Drive  
Suite 800  
Charlotte, North Carolina 28227  
TEL: (980) 339-8684  
EMAIL: contact@carolinasgeotech.com  
URL: carolinasgeotech.com  
EMPS: 4  
Primary Contact: Rob Kral  
rkral@carolinasgeotech.com

DESCRIPTION/DISCIPLINES: We are  
a newly established geotechnical  
engineering consulting firm  
concentrating in designs services to the  
department of transportation arena.

**Catlin Engineers & Scientists**  
220 Old Dairy Road  
Wilmington, NC 28405  
TEL: (910) 452-5861  
EMAIL: info@CatlinUSA.com  
URL: CatlinUSA.com  
EMPS: 37  
Primary Contact: Jason Catlin  
Jason.Catlin@CatlinUSA.com

DESCRIPTION/DISCIPLINES:  
DISCIPLINES: Civil (Environmental);  
Civil (Geotechnical); Civil (General  
Municipal); Hazardous Waste;  
Hydrology; Hydrogeology; Water; Other

BRANCH OFFICE:  
1044 Washington Street  
Raleigh, NC 27605  
Tel: (919) 838-2875  
Fax: (919) 838-6682  
Contact: Bill Walsh  
Email: bill.walsh@catlinusa.com

**CDM Smith**  
5400 Glenwood Avenue, Ste. 400  
Raleigh 27612  
TEL: (919) 325-3500  
EMAIL: keiserdz@cdmsmith.com  
URL: cdmsmith.com  
EMPS: 149



Primary Contact: Hisham Abdelaziz  
abdelazizhk@cdmsmith.com

DESCRIPTION/DISCIPLINES:  
DISCIPLINES: Civil (General Municipal);  
Civil (Geotechnical); Civil (Structural);  
Civil (Transportation); Construction  
Management; Hydrology; Planning;  
Surveying; Water; Other

**CH Engineering, PLLC**

3220 Glen Royal Road  
Raleigh, NC 27617  
TEL: (919) 788-0224 (Ext 5462)  
EMAIL: mchambliss@ch-engr.com  
URL: ch-engr.com  
EMPS: 31  
Primary Contact: Maha Chambliss  
mchambliss@ch-engr.com

DESCRIPTION/DISCIPLINES:  
DISCIPLINES: Civil (General Municipal);  
Civil (Transportation); Surveying; Water;  
Other

**Charlotte Engineers, LLP**

5838 Monroe Road  
Charlotte, NC 28212  
TEL: (704) 531-3000  
EMAIL:  
meaves@charlotteengineers.com  
URL: charlotteengineers.com  
EMPS: 22  
Primary Contact: Michael Eaves  
meaves@charlotteengineers.com

DESCRIPTION/DISCIPLINES:  
Mechanical, Electrical, Plumbing, and  
Fire Protection, Mechanical, Electrical,  
Other

**Cheatham & Associates, PA**

3412 Enterprise Drive  
Wilmington, NC 28405  
TEL: (910) 452-4210  
EMAIL: office@cheathampa.com  
URL: cheathampa.com  
EMPS: 14  
Primary Contact: Kenneth Lynch  
klynch@cheathampa.com

DESCRIPTION/DISCIPLINES:  
DISCIPLINES: Electrical, Mechanical,  
Plumbing, Fire Protection

**Civil Consultants, Inc.**

3708 Lyckan Parkway  
Suite 201  
Durham, NC 27707  
TEL: (919) 490-1645  
EMAIL:  
tony.whitaker@civil-consultants.com  
URL: civil-consultants.com  
EMPS: 7  
Primary Contact: Tony Whitaker  
tony.whitaker@civil-consultants.com

DESCRIPTION/DISCIPLINES: Land  
Planning, Civil Engineering, Approvals &  
Permits, Construction Support

**Civil Design Concepts, PA**

168 Patton Avenue  
Asheville, NC 28801  
TEL: (828) 252-5388  
EMAIL: pbradshaw@cdcgo.com  
URL: cdcgo.com  
EMPS: 29  
Primary Contact: Christopher Eller  
celler@cdcgo.com

DESCRIPTION/DISCIPLINES:  
DISCIPLINES: Civil (Environmental);  
Civil (General Municipal); Planning;  
Water

BRANCH:  
WAYNESVILLE:  
52 Walnut Street, Suite 9  
Waynesville, NC 28786

**CJS Conveyance, PLLC**

320 S. Academy Street  
Cary, NC 27511  
TEL: (919) 890-3876  
EMAIL: cwindley@cjsconveyance.com  
URL: cjsconveyance.com/  
EMPS: 10

Primary Contact: Chris Windley  
cwindley@cjsconveyance.com  
DESCRIPTION/DISCIPLINES: CJS  
Conveyance provides professional  
engineering services related to water  
and sewer infrastructure design and  
construction. We provide these services  
for municipal and private clients.

**Clark Nexsen**

333 Fayetteville Street, Ste 1000  
Raleigh, NC 27601  
TEL: (919) 828-1876  
EMAIL: thall@clarknexsen.com  
URL: clarknexsen.com  
EMPS: 141  
Primary Contact: Terry Hall  
thall@clarknexsen.com

DESCRIPTION/DISCIPLINES:  
DISCIPLINES: Architectural/Structural;  
Civil (Environmental); Civil (General  
Municipal); Civil (Transportation);  
Communications; Electrical;  
Mechanical; Planning; Other

BRANCHES:  
CHARLOTTE  
1523 Elizabeth Avenue,  
Ste. 300  
Charlotte, NC 28204  
Tel: (704) 377-8800  
Fax: (704) 358-1037  
Branch Contact: Jason Jones  
E-mail: jjones@clarknexsen.com

ASHEVILLE  
301 College Street, Suite 300  
Asheville, NC 28801  
Tel: (828) 232-0608  
Fax: (828)232-1606  
Branch Contact: Chad Roberson  
EMAIL: croberson@clarknexsen.com

**CLH Design, PA**

400 Regency Forest Drive, Ste. 120  
Cary, NC 27518  
TEL: (919) 319-6716  
EMAIL: clhdesign@clhdesignpa.com  
URL: clhdesignpa.com  
EMPS: 21  
Primary Contact: Steven Miller  
smiller@clhdesignpa.com

DESCRIPTION/DISCIPLINES: Water and  
Stormwater: Stormwater Management;  
Erosion Control. Water Resources:  
Hydraulics, Hydrology. Special Projects:  
Land Development, Recreational  
Facilities, Recreational Facilities

### **Client Savvy**

Affiliate/Supplier

6601 Six Forks Road, Ste. 130

Raleigh, NC 27615

TEL: (919) 882-3843

EMAIL: answers@clientsavvy.com

URL: clientsavvy.com

Primary Contact: Ryan Suydam

ryan@clientsavvy.com

**DESCRIPTION/DISCIPLINES:** Client Savvy(SM) services include: Business and market research surveys; business management consulting/strategic planning/business advisory services, and related business management information services in client specific fields; and on-line computer services enabling registered users to gather, review, and respond to feedback from their clients.

### **Coastal Engineering & Surveying, Inc.**

4425 N. Croatan Highway

Kitty Hawk, NC 27949

TEL: (252) 261-4151

EMAIL: cgomez@coastales.com

URL: coastales.com

EMPS: 8

Primary Contact: Carlos Gomez

cgomez@coastales.com

**DESCRIPTION/DISCIPLINES:**

**DISCIPLINES:** Civil (General Municipal);

Civil (Structural); Surveying

### **ColeJenest & Stone, PA**

200 South Tryon Street

Suite 1400

Charlotte, NC 28202

TEL: (704) 376-1555

EMAIL: bjenest@colejeneststone.com

URL: colejeneststone.com

EMPS: 55

Primary Contact: Kevin Ammons

kammons@colejeneststone.com

### **Colliers Engineering & Design**

2000 Regency Pkwy, Ste 295

Cary, North Carolina 27518

TEL: (919) 439-6082

EMAIL:

greg.buchholze@colliersengineering.com

URL: colliersengineering.com

EMPS: 54

Primary Contact: Lisa Alfaro

lisa.alfaro@colliersengineering.com

**DESCRIPTION/DISCIPLINES:** Colliers Engineering & Design CT, P.C. is a trusted provider of multi-discipline engineering, design and consulting services to public and private sector clients. We specialize in providing a comprehensive suite of services through talented professionals in offices nationwide who utilize the most advanced technologies to deliver customized solutions for our clients

### **Consor Engineers LLC**

378 Williamson Road, Ste. 206

Mooresville, NC 28117

TEL: (888) 451-6822

EMAIL: tgraham@consoreng.com

URL: consoreng.com

EMPS: 7

Primary Contact: Thomas Graham

tgraham@consoreng.com

**DESCRIPTION/DISCIPLINES:**

Engineering Firm

### **Construction Materials Engineering & Consulting, PC**

4401 Shopton Road

Charlotte, NC 28217

TEL: (704) 361-8104

EMAIL: jim@cmeccpc.net

EMPS: 11

Primary Contact: Jim Magennis

jim@cmeccpc.net

### **CPL (Clark Patterson Lee, P.C.)**

1620 Hillsborough Street, Suite A

Raleigh, NC 27605

TEL: (919) 645-9001

EMAIL: Jharper@cplteam.com

URL: clarkpatterson.com

EMPS: 35

Primary Contact: Jennifer Harper

jharper@cplteam.com

**DESCRIPTION/DISCIPLINES:**

Engineering, Architecture, Transportation Planning

### **CriTek Engineering Group, P.C.**

1 Centerview Drive

Suite 307

Greensboro, NC 27407

TEL: (336) 348-1889

EMAIL: dcrite@critekgroup.com

URL: critekgroup.com

EMPS: 2

Primary Contact: Dawayne Crite

dcrite@critekgroup.com

**DESCRIPTION/DISCIPLINES:** CriTek is a civil and environmental engineering firm with a concentration in water resources engineering.

### **Crowley Professional Engineers, Inc.**

1233 Heritage Links Dr.

Wake Forest, NC 27857

TEL: (919) 625-6788

EMPS: 2

Primary Contact: Michael Crowley

mcrowley@caaengineers.com

Crowley Professional Engineers, Inc. is a leading consultant in the design and permitting of solar development projects.



### **Davenport**

119 Brookstown Ave,

Ste PH 1

Winston-Salem, NC 27101

TEL: (336) 744-1636

EMAIL: jdavenport@davenportworld.com

URL: davenportworld.com

EMPS: 41

Primary Contact: Robin Buchanan

rbuchanan@davenportworld.com

**DESCRIPTION/DISCIPLINES:**

**DISCIPLINES:** Civil (Environmental) Civil (Transportation); Planning; Site Civil, Environmental Consulting, Environmental Remediation

**BRANCH OFFICES**

**VIRGINIA:**

22375 Broderick Drive, Suite 250  
Sterling, VA 20166  
Tel: (240) 753-6216  
Contact: David Newberger  
Email: dnewberger@davenportworld.com

780 Lynnhaven Parkway, Suite 423  
Virginia Beach, VA 23452  
Tel: (757)-375-7470  
Contact: Robert Gey  
Email: rgey@davenportworld.com

1100 Boulders Parkway, Richmond, VA, 23225  
Tel: (804) 381-0581  
Contact: Nick Liguori  
EMAIL: nliguori@davenportworld.com

**ASHEVILLE**

206 Executive Park  
Asheville, NC 28801  
Tel: 828-398-4528  
Contact: Lori Boyer  
EMAIL: lboyer@davenportworld.com

**CHARLOTTE**

5200 77 Center Drive,  
Suite 325  
Charlotte, NC 28217  
Tel: (704) 200-2864  
Edith Peters  
EMAIL: epeters@davenportworld.com

**RALEIGH**

4600 Marriott Dr., Suite 350  
Raleigh, NC 27612  
Tel: (919) 324-1665  
Contact: Dionne Brown  
EMAIL: dbrown@davenportworld.com

**WILMINGTON**

5917 Oleander Dr., Ste 206,  
Wilmington, NC 28403  
Tel: (910) 550-3741  
Contact: Don Bennett  
dbennett@davenportworld.com

**David Miller, PE**

6300 Creedmoor Rd.  
Suite 170-363  
Raleigh, NC 27612  
TEL: (919) 422-8932

EMAIL: dave@dma-pa.com

EMPS: 1

Primary Contact: David Miller  
dave@dma-pa.com

**DESCRIPTION/DISCIPLINES:**

**DISCIPLINES:** Architectural/Structural;  
Civil (Geotechnical); Civil (Structural);  
Electrical; Energy; Mechanical

**Davis-Martin-Powell & Associates, Inc.**

6415 Old Plank Road  
High Point, NC 27265  
TEL: (336) 886-4821

**EMAIL:**

mslusher@dmp-inc.com

URL: dmp-inc.com

EMPS: 40

Primary Contact: Michael Slusher

mslusher@dmp-inc.com

**DESCRIPTION/DISCIPLINES:**

**DISCIPLINES:** Civil (Environmental);  
Civil (General Municipal); Civil  
(Transportation); Hydrology; Planning;  
Surveying; Water; Other

**BRANCH OFFICES:**

**APEX:**

1099 Investment Blvd,  
Apex, NC 27502

Contact: Steve McKee

**EMAIL:**

smckee@dmp-inc.com

Tel: (919) 267-5205

**WINSTON-SALEM**

Office: 815 Burke Street,  
Winston-Salem, NC 27101

Contact: Michael Goliber

EMAIL: mgoliber@dmp-inc.com

Tel: (336) 819-8477

**ACEC of North Carolina**  
advocates for clean,  
**RENEWABLE ENERGY USE**  
in our state and lobbies for  
a diversified, sustainable  
energy portfolio.

**DELTA |v| Forensic Engineering, Inc.**

9800 Southern Pine Blvd, Suite J  
Charlotte, NC 28273

TEL: (704) 525-5700

EMAIL: info@deltavinc.com

URL: deltavinc.com

EMPS: 42

Primary Contact: Maggie Melkus

mmelkus@deltavinc.com

**DESCRIPTION/DISCIPLINES:**

**DISCIPLINES:** Mechanical; Other,  
Forensic

**Delta Airport Consultants Inc.**

11111 Carmel Commons Blvd.  
Ste. 435

Charlotte, NC 28226

TEL: (704) 521-9101

EMAIL: dsander@deltaairport.com

URL: deltaairport.com

Primary Contact: Douglas Sander

dsander@deltaairport.com

**DESCRIPTION/DISCIPLINES:**

Delta Airport Consultants, Inc.,  
established in 1978, is dedicated to  
aviation and specializes exclusively in  
full-service airport consulting.

**Delta Oaks Group**

4904 Professional Drive, Second Floor  
Raleigh, NC 27609

TEL: (919) 457-1099

EMAIL: mbowers@deltaoaksgroup.com

URL: deltaoaksgroup.com

EMPS: 25

Primary Contact: Kimberlee Hoffman

khoffman@deltaoaksgroup.com

**DESCRIPTION/DISCIPLINES:** Delta

Oaks Group is a growing engineering  
company located in NC doing Civil /  
A&E, Environmental, Geotechnical,  
Inspection & Structural Services  
specializing in the Telecom industry.

**Dewberry**

2610 Wycliff Road  
STE 410

Raleigh, NC 27607

TEL: (919) 881-9939

EMAIL: jadams@dewberry.com

URL: dewberry.com

EMPS: 249  
Primary Contact: Matthew West  
mwest@dewberry.com

DESCRIPTION/DISCIPLINES: Civil  
(General Municipal); Civil (Structural);  
Civil (Transportation); Electrical;  
Energy; Mechanical; Surveying; Water/  
Wastewater; Stormwater; Federal;  
Plumbing; Telecommunications

BRANCHES  
CHARLOTTE  
9300 Harris Corners Pkwy, Ste 220  
Charlotte, NC 28269  
Tel: (704) 509-9918

**Diehl & Phillips, P.A., Consulting Engineers**

1500 Piney Plains Road,  
Suite 200  
Cary, NC 27518  
TEL: (919) 467-9972  
EMAIL: jfphillips@bellsouth.net  
URL: diehlandphillips.com  
EMPS: 5  
Primary Contact: John Phillips  
jfphillips@bellsouth.net

DESCRIPTION/DISCIPLINES:  
DISCIPLINES: Civil (Environmental);  
Civil (General Municipal); Water; Other

**DJG Inc**  
225 S West Street  
Raleigh, NC 27603  
TEL: (757) 253-0673  
EMAIL: dbooth@djginc.com  
URL: www.djginc.com  
EMPS: 3  
Primary Contact: Donald Booth  
dbooth@djginc.com

DESCRIPTION/DISCIPLINES: A multi-  
discipline architecture and engineering  
firm headquartered in Virginia with an  
office in Raleigh, focusing on turn key  
building and site design solutions for  
both public and private clients.

**Draper Aden Associates**  
114 Edinburgh South Drive  
Suite 200  
Raleigh, NC 27511

TEL: (919) 827-0864  
EMAIL: tclayton@daa.com  
URL: www.daa.com  
EMPS: 42  
Primary Contact: Tyrus Clayton  
tclayton@daa.com

DESCRIPTION/DISCIPLINES:  
DISCIPLINES: Civil (Environmental,  
General Municipal, Geotechnical,  
Structural, Transportation) Construction  
Management; Energy; Hazardous  
Waste; Hydrogeology; Hydrology;  
Planning; Surveying ; Water

BRANCHES:  
FAYETTEVILLE  
225 Green Street, Ste. 310, Fayetteville,  
NC, 28301,  
In the Systel Bldg.

**DRMP, Inc.**  
4235 South Stream Blvd #150  
Charlotte, NC 28217  
TEL: (704) 332-2289  
EMAIL: jbeck@drmp.com  
URL: drmp.com  
EMPS: 84  
Primary Contact: Jim Beck  
jbeck@drmp.com

DESCRIPTION/DISCIPLINES:  
DISCIPLINES: Civil (Environmental); Civil  
(General Municipal); Civil (Structural);  
Civil (Transportation); Construction  
Management; Hydrology; Planning;  
Surveying; Water; Other

BRANCHES:  
CARY  
8000 Regency Parkway, Suite 110,  
Cary, NC 27518  
Primary Rep | Robert Walker rwalker@  
drmp.com  
Tel: (919) 650-1038

ASHEBORO  
1342 E Salisbury Street, Asheboro, NC  
27203  
Primary Rep | Jeff Loflin jloflin@drmp.  
com  
Tel: (336) 628-5849

TROUTMAN  
149 Houston Road, Suite A, Troutman,

NC 28166  
Primary Rep | Matt Elliott melliott@  
drmp.com  
Tel: (980) 444-3341

**Durisol Noise Barrier Systems**

Affiliate/Supplier  
8640 Broad Street  
P.O. Box 708  
Rural Hall, NC 27045  
TEL: (909) 615-2037  
EMAIL: michael.pruden@durisol.com  
URL: durisol.com  
Primary Contact: Michael Pruden  
michael.pruden@durisol.com

DESCRIPTION/DISCIPLINES:  
Manufacturer of noise barrier  
systems to include Durisol Absorptive,  
Transparent Systems, and TL-4 crash  
tested noise barrier system



**E. L. Robinson Engineering Co.**

3362 Six Forks Road  
Raleigh, NC 27609  
TEL: (984) 960-2810  
EMAIL: pmattox@elrobinson.com  
URL: elrobinson.com  
EMPS: 6  
Primary Contact: Dean Hatfield  
dhatfield@elrobinson.com

DESCRIPTION/DISCIPLINES: Structural  
Systems, Studies, Research &  
Consulting Engineering  
Surveying & mapping Technology,  
Transportation, Water Resources, Water  
& Stormwater; Cultural Resources;  
GIS; Environmental Assessment;  
NEPA – CE's, EA's, EIS's; Construction  
Inspection; Transportation Planning;  
Traffic Modeling; WZTC; Civil Site.  
DISCIPLINES: Civil (Environmental),  
Civil (General Municipal), Civil  
(Geotechnical), Civil (Structural), Civil  
(Transportation), Communications  
Computer Applications, Construction  
Management, Hydrogeology, Hydrology,

Materials Handling, Mining Planning,  
Surveying, Water, and Emergency  
Management

**ECS Southeast, LLP**

9001 Glenwood Avenue  
Raleigh, NC 27617  
TEL: (919) 861-9910  
EMAIL: DClyburn@ecslimited.com  
URL: ecslimited.com  
EMPS: 343  
Primary Contact: Derek Clyburn, PE  
DClyburn@ecslimited.com

DESCRIPTION/DISCIPLINES: ECS  
provides Geotechnical, Environmental,  
Construction Materials Testing,  
Industrial Hygiene and Building  
Envelope consulting services. ECS also  
provides reinforced earth design and  
geotechnical deep foundation design  
services.

**ASHEVILLE**

1900 Hendersonville Rd., Ste 10  
Asheville, NC 28803

**CHARLOTTE**

1812 Center Park Drive, Suite D  
Charlotte, NC 28217

**GREENSBORO**

4811 Koger Boulevard, Greensboro, NC  
27404  
PRIMARY PHONE:  
(336) 856-7150

**WINSTON-SALEM**

2511 Neudorf Road, Suite N Clemmons,  
NC 27012

**Wilmington**

6714 Netherlands Drive  
Wilmington, NC 28405  
910-686-9114

**Fayetteville**

6151 Raeford Road  
Suite A  
Fayetteville, NC 28304  
910-401-3288

**Greenville**

1200 Woodruff Road  
Suite H-12  
Greenville, SC 29607

864-987-1610

**Swansboro**

1048 West Corbett Avenue  
Swansboro, NC 28584  
910-326-2627

**Eden & Associates, P.C.**

227 W. 4th Street  
Suite 100  
Charlotte, NC 28202  
TEL: (804) 479-0351  
EMAIL: mark@edenandassociates.com  
URL: edenandassociates.com  
EMPS: 3  
Primary Contact: Mark McGuire  
mark@edenandassociates.com

DESCRIPTION/DISCIPLINES: Eden &  
Associates P.C. was founded in 1999  
and currently provides engineering  
consulting, planning and construction  
management services to various clients  
in Virginia and North Carolina.

**Edmondson Engineers, PA**

700 Executive Park; 1920 Hwy 54  
Durham, NC 27713  
TEL: (919) 544-1936  
EMAIL: charles.crowl@  
edmondsonengineers.com  
URL: edmondsonengineers.com  
EMPS: 21  
Primary Contact: Charles Crowl  
charles.crowl@edmondsonengineers.com

DESCRIPTION/DISCIPLINES:

DISCIPLINES: Electrical; Mechanical  
and Plumbing

**Energy Land & Infrastructure**

1015 Passport Way  
Cary, NC 27513  
TEL: (919) 234-1974  
EMAIL: Joel.smith@eli-llc.com  
URL: eli-llc.com  
EMPS: 8  
Primary Contact: Joel Smith  
Joel.smith@eli-llc.com

DESCRIPTION/DISCIPLINES:

DISCIPLINES: Civil (Environmental); Civil  
(Gen. Municipal); Civil (Structural); Civil

(Transportation) Construction Mgmt.;  
Energy; Hydrology; Surveying; Water

**Engineered Construction Co., Inc**

900 Paverstone Drive,  
Suite 200  
Raleigh, NC 27615  
TEL: (919) 954-9090  
EMAIL: dawnflump@aol.com  
URL: engrconst.com/  
EMPS: 10  
Primary Contact: Scott Dawson  
dawnflump@aol.com

DESCRIPTION/DISCIPLINES:

DISCIPLINES: Construction  
Management; Planning; Surveying

**Engineered Designs, Inc.**

1151 SE Cary Parkway, Ste. 200  
Cary, NC 27518  
TEL: (919) 851-8481  
EMAIL:  
gscoggins@engineereddesigns.com  
URL: engineereddesigns.com  
EMPS: 21  
Primary Contact: M. Ginger Scoggins  
gscoggins@engineereddesigns.com

DESCRIPTION/DISCIPLINES: Studies,  
Research, and Consulting Engineering  
Services: Project Feasibility Studies/  
Economic;/ Value Engineering.  
Building/Technology Systems:  
Mechanical/Electrical /Plumbing;  
Energy Efficiency - New and Retrofit.

**ESP Associates, Inc.**

2200 Gateway Centre Blvd.  
Suite 216  
Morrisville, NC 27560  
TEL: (919) 678-1070  
EMAIL: bfwelch@espassociates.com  
URL: espassociates.com/  
EMPS: 146  
Primary Contact: Brian Welch  
bfwelch@espassociates.com

DESCRIPTION/DISCIPLINES:

Description: ESP Associates, Inc. is a  
multi-discipline engineering design  
and consulting firm providing our  
clients with civil engineering, surveying,  
planning/landscape architecture,

geosciences, environmental, subsurface utility engineering, and construction engineering inspection.

Building partnerships with a simple approach:

Listen. Deliver. Improve.

**Exult Engineering, PC**

304 W Millbrook Rd  
Suite F

Raleigh, NC 27609

TEL: (984) 500-5426

EMAIL: cole@exultengineering.com

URL: exultengineering.com

EMPS: 6

Primary Contact: Coleman Dagerhardt

cole@exultengineering.com

**DESCRIPTION/DISCIPLINES:**

Exult Engineering is a local, small professional services firm that was incorporated in Fall of 2017.

Exult specializes in transportation engineering and planning.



**Falcon Engineering**

1210 Trinity Road, Suite 110

Cary, NC 27513

TEL: 919-871-0800

EMAIL:

mrobertson@falconengineers.com

URL: falconengineers.com

EMPS: 28

Primary Contact: Margaret Robertson

mrobertson@falconengineers.com

**DESCRIPTION/DISCIPLINES:**

Disciplines: Geotechnical Engineering; Environmental Services; Construction Material Testing; Special Inspections; and Laboratory Services

**FEI Civil Engineers and Land Surveyors**

8518 Triad Drive

Cofax (Greensboro), NC 27235

TEL: (336) 852-9797

EMAIL: cfleming@FEIConsulting.com

URL: feiconsulting.com

EMPS: 30

Primary Contact: Craig Fleming

cfleming@feiconsulting.com

**DESCRIPTION/DISCIPLINES:** Civil, Gen. Municipal Energy Hydrology, Surveying, Civil, Geotechnical, Hazardous, Waste, Industrial, Water

**Fleming & Associates, PA**

1004 Hay Street

Fayetteville, NC 28305

TEL: (910) 433-2825

EMAIL:

sfleming@flemingandassociates.com

URL: flemingandassociates.com

EMPS: 8

Primary Contact: Stephen Fleming

sfleming@flemingandassociates.com

**DESCRIPTION/DISCIPLINES:**

**DISCIPLINES:** Foundations; Buildings; Towers; Stadiums; Tunnels; Seismic; Design; Bridges; Locks/Dams/ Water Control Structures; Airports; Manufacturing; Heavy Industry

**Freese & Nichols, Inc.**

1017 Main Campus Drive, Ste. 1200

Raleigh, NC 27606

TEL: (919) 582-5850

EMAIL: mdw@freese.com

URL: www.freese.com

EMPS: 43

Primary Contact: Mike Ways

mdw@freese.com

**DESCRIPTION/DISCIPLINES:** Basic

Research and Studies, Project Feasibility Studies/Economic, Water Conservation, Expert Testimony, Computer/Software Technology, Value Engineering, Mechanical/ Electrical /Plumbing, Sustainability or Carbon Neutrality, Foundations, Towers C7.Bridges, Noise, Graywater Systems, Stormwater Management, Wastewater Collection/Treatment and Disposal, Erosion Control, Hydraulics, Hydrology, Locks/Dams/Water Control Structures, Irrigation, Treatment,

Watershed Management, Flood Risk Management, Coastal and Eco-System Restoration, Surface and Groundwater Supply Development, Transmission, Distribution & Storage, Water Use Reduction, Climate Adaptation H1.Highways, Basic Research and Studies, Public Transit, Airports, Marine/Ports, Intermodal Facilities, Recreational Facilities, Program and Construction Management, Trenchless Technologies, Civil (Environmental); Civil (General Municipal); Planning; Water; Other (Wastewater, Program Management

**BRANCHES:**

**CHARLOTTE**

222 S. Caldwell St

Charlotte, NC 28202

Tel: (704) 251-0178

**GREENSBORO**

717 Green Valley Road, Ste. 200

Greensboro, NC 27408

Tel: (336) 790-6744

**WINSTON-SALEM**

531 N Liberty St,

Winston-Salem, NC 27101

Tel: (336) 790-6744

**Froehling & Robertson**

310 Hubert Street

Raleigh, NC 27603

TEL: (919) 828-3441

EMAIL: rrvienbark@fandr.com

URL: fandr.com

EMPS: 81

Primary Contact: Dan Schaefer

dschaefer@fandr.com

**DESCRIPTION/DISCIPLINES:**

**DISCIPLINES:** Civil (Environmental); Civil (Geotechnical); Construction Management; Hazardous Waste; Hydrogeology; Hydrology Materials Handling; Planning; Other

**BRANCHES:**

**CHARLOTTE**

3300 International Airport Drive,

Suite 600,

Charlotte, NC 28208

Tel: (704) 596-2889

FAYETTEVILLE  
327 E Jenkins St.  
Fayetteville, NC 28306  
Tel: (910) 323-9832  
Craig Mintz, Branch Manager,  
cmintz@fandr.com



**Gannett Fleming, Inc.**

1 Glenwood  
Suite 900  
Raleigh, NC 27603  
TEL: (919) 420-7660  
EMAIL: tsnw@gfnet.com  
URL: gannettfleming.com  
EMPS: 132  
Primary Contact: Michael Holder  
mholder@gfnet.com

DESCRIPTION/DISCIPLINES: Acoustics, Architecture, Business and Technology Solutions, Construction Management/ Program Management, Engineering, Environmental Management & Remediation, Geotechnical, Information Technology, Project Delivery Security & Safety, Valuation & Rate, Vertical Transportation

**Gavel & Dorn Engineering**

PO Box 1791  
Denver, NC 28037  
TEL: (704) 483-2054  
EMAIL: lisa@gaveldorn.com  
URL: gaveldorn.com  
EMPS: 33  
Primary Contact: Lisa Gavel  
lisa@gaveldorn.com

DESCRIPTION/DISCIPLINES:  
DISCIPLINES: Civil, Gen. Mun., Civil Geotechnical, Environmental, Structural, Cons. Mgmt.

**GEL Engineering of NC, Inc.**  
**DBA GEL Solutions**  
2700 Sumner Blvd.  
Suite 106

Raleigh, NC 27616  
TEL: (919) 544-1100  
EMAIL: Derek.Bradner@gel.com  
URL: gel-solutions.com  
EMPS: 17  
Primary Contact: Derek Bradner  
Derek.Bradner@gel.com

DESCRIPTION/DISCIPLINES: We provide subsurface utility engineering, surveying, and geophysical services throughout the United States.

**George Barbour + Associates**

6622 Gordon Road  
Suite B  
Wilmington, NC 28411  
TEL: 910-792-6192  
EMAIL: georgebarbour@grbpe.com  
URL: grbpe.com  
EMPS: 1  
Primary Contact: Tammy Barbour  
tammy@grbpe.com

DESCRIPTION/DISCIPLINES:  
DISCIPLINES: Civil (Structural), Forensic Engineer Investigations

**Geoscience & Technology, PA**

2050 Northpoint Drive  
Winston-Salem, NC 27106  
TEL: (336) 896-1300  
EMAIL: geosci@geotec.com  
URL: geotec.com  
EMPS: 6  
Primary Contact: Steve Mason  
sem@geotec.com

DESCRIPTION/DISCIPLINES: Civil (Geotechnical); Civil (Environmental); Civil (Structural); Hydrogeology; Hydrology; Hazardous Waste; Planning, Civil Engineering and Environmental Consulting

**GPI Geospatial, Inc.**

Associate (Non Lic.)  
508 W 5th Street  
Suite 150  
Charlotte, NC 28202  
TEL: (704) 540-0087  
EMAIL: pbadr@gpinet.com  
URL: gpinet.com/geospatial  
EMPS: 12

Primary Contact: W Brock  
abrock@gpinet.com

DESCRIPTION/DISCIPLINES: GPI Geospatial, Inc. is a trusted provider of precision aerial mapping, imagery, LiDAR, and surveying services within the transportation, planning, design, construction and government agencies. Our mission is to map the foundation for infrastructure improvements that enhance the connectivity between people and communities. With multiple aircraft and vehicles equipped with high precision imagery and LiDAR sensors, we provide innovative surveying and mapping solutions to state, local and federal governments, as well as private-sector clients throughout the US.

**Green Engineering PLLC**

PO Box 609  
Wilson, NC 27893  
TEL: (252) 237-5365  
EMAIL: elg3@greeneng.com  
URL: greenengineering.com  
EMPS: 21  
Primary Contact: Leo Green  
elg3@greeneng.com

DESCRIPTION/DISCIPLINES: Planning, design and construction management work in all types of wastewater treatment and disposal facilities, water treatment and distribution systems, industrial parks, shopping centers, airports, correctional facilities, government installations, county roads and interstate highways. Its pioneering specialization in advanced wastewater technologies, such as water reuse, land application and conjunctive uses, is acknowledged statewide.

**Green Mountain Engineering, PLLC**

7 A Wendy Court  
Greensboro, NC 27409  
TEL: (336) 294-9394  
EMAIL: vince@greenmountainengineers.com  
URL: greenmountainengineers.com  
EMPS: 12  
Primary Contact: Vincent Townsend  
vince@greenmountainengineers.com

**DESCRIPTION/DISCIPLINES:** Civil Engineering and Land Surveying in Greensboro, North Carolina, green mountain engineering, greensboro engineering firm, greensboro surveyor, professional engineer greensboro, civil engineering, land surveying, land development

#### **Grinnell Leadership**

Affiliate/Supplier  
7011 Eschol Ct  
Wilmington, NC 28409  
TEL: (919) 619-2921  
EMAIL: jgrinnell@teamgrinnell.com  
URL: teamgrinnell.com  
Primary Contact: Kim McFarland  
kmcfarland@teamgrinnell.com

**DESCRIPTION/DISCIPLINES:**  
For 34 years we have been in the success business utilizing proven behavioral sciences to help our clients find greater organizational, team and personal leadership potential.



#### **Hamilton Stephens Steele + Martin, PLLC**

Affiliate/Supplier  
525 North Tryon Street  
Suite 1400  
Charlotte, NC 28202  
TEL: (704) 227-1074  
EMAIL: achillemi@lawhssm.com  
URL: lawhssm.com  
Primary Contact: Adrienne Chillemi  
achillemi@lawhssm.com

**DESCRIPTION/DISCIPLINES:** law firm and attorneys focusing on representation of design professionals

#### **Hardesty & Hanover**

3100 Smoketree Court  
Suite 1005  
Raleigh, NC 27604  
TEL: (919) 896-7428  
EMAIL: sreynolds@hardestyhanover.com  
URL: hardestyhanover.com  
EMPS: 3  
Primary Contact: Scott Reynolds  
sreynolds@hardestyhanover.com  
**DESCRIPTION/DISCIPLINES:** Hardesty & Hanover is a full-service infrastructure engineering firm with more than 130 years of experience steeped in solving complex engineering challenges.

#### **Harrell Design Group, PC**

8016 Tower Point Drive  
Charlotte, NC 28227  
TEL: (704) 814-1320  
EMAIL: LHarrell@harrelldg.com  
URL: harrelldg.com  
EMPS: 22  
Primary Contact: Amanda Harrell  
aharrell@harrelldg.com

**DESCRIPTION/DISCIPLINES:**  
**DISCIPLINES:** Architectural; Mechanical; Electrical; Communications; Plumbing; Fire Protection; Planning; Other

#### **Hart & Hickman**

2923 S. Tyron Street, Ste 100  
Charlotte, NC 28203  
TEL: 704-586-0007  
EMAIL: ccannon@harthickman.com  
URL: harthickman.com  
EMPS: 58  
Primary Contact: Carla Cannon  
ccannon@harthickman.com

**DESCRIPTION/DISCIPLINES:**  
**DISCIPLINES:** Civil (Environmental); Hydrology

#### **Hazen and Sawyer, PC**

4011 Westchase Blvd,  
Ste. 500  
Raleigh, NC 27607  
TEL: (919) 833-7152  
EMAIL: rltaylor@hazenandsawyer.com  
URL: hazenandsawyer.com  
EMPS: 191

Primary Contact: Ronald Taylor  
rltaylor@hazenandsawyer.com

#### **DESCRIPTION/DISCIPLINES:**

**DISCIPLINES:** Architectural/Structural; Civil (Environmental); Civil (General Municipal); Construction Management; Electrical; Energy; Hydrogeology; Hydrology; Mechanical; Planning; Water; Other

#### **HDR**

555 Fayetteville Street,  
Suite 900  
Raleigh, NC 27601  
TEL: (919) 232-6600  
EMAIL: paul.meehan@hdrinc.com  
URL: hdrinc.com  
EMPS: 439  
Primary Contact: Paul Meehan  
paul.meehan@hdrinc.com

#### **DESCRIPTION/DISCIPLINES:**

**DISCIPLINES:** Acoustical; Architectural/Structural; Civil (Environmental); Civil (General Municipal); Civil (Geotechnical); Civil (Structural); Civil (Transportation) Cogeneration; Communications; Computer Applications; Construction Management; Electrical; Energy; Hazardous Waste; Hydrogeology; Hydrology; Industrial; Materials Handling; Mechanical; Mining; Planning; Water; Other

#### **HensonFoley**

121 Gilead Road  
Huntersville, NC 28078  
TEL: (704) 875-1615  
EMAIL: tim@hensonfoley.com  
URL: hensonfoley.com  
EMPS: 10  
Primary Contact: Tim Foley  
tim@hensonfoley.com

**ACEC of North Carolina**  
advocates for revitalizing  
the **INFRASTRUCTURE**  
of our state and lobbies  
for for stable, long-term  
funding solutions.



**DESCRIPTION/DISCIPLINES:** Land Planning, Landscape Architectural, and Civil Engineering firm specializing in Site Planning and preparation of Site Construction Documents.

**High Country Engineering, PC**

111 E Chestnut Street  
Asheville, NC 28801  
TEL: (828) 230-4511  
EMAIL: mgoforth@hcepc.net  
URL: highcountryengineering.com  
EMPS: 4  
Primary Contact: Michael Goforth  
mgoforth@hcepc.net

**DESCRIPTION/DISCIPLINES**

Small civil engineering firm providing a mix of private development and municipal engineering work across WNC.

**Highfill Infrastructure Engineering, P.C.**

2703 Jones Franklin Road, Suite 201  
Raleigh, NC 27518  
TEL: (919) 481-4342  
EMAIL: thhighfill@hiepc.com  
URL: hiepc.com  
EMPS: 23

Primary Contact: J Cox  
rcox@hiepc.com

**DESCRIPTION/DISCIPLINES:** HIGHFILL is a principle-centered consulting firm helping public and private utilities and industrial clients optimize water, wastewater and stormwater infrastructure solutions. Our service-focused team members efficiently lead infrastructure planning, design, and construction projects with a proficiency and devotion to customer service that are second to none.

**BRANCHES:**

3804 Park Avenue, Unit A,  
Wilmington, NC 28403

380 Knollwood St  
Suite 734  
Winston-Salem, NC 27103

1320 Main St., Ste. 260,  
Columbia, SC 29201

**Hinde Engineering, Inc.**

10815 Sikes Place, Suite 210  
Charlotte, NC 28227  
TEL: (704) 814-4407  
EMAIL: khinde@hindeengineering.com  
URL: hindeengineering.com  
EMPS: 12  
Primary Contact: Kevin Hinde  
khinde@hindeengineering.com

**DESCRIPTION/DISCIPLINES:** HEI was founded in 2004 and is a civil engineering firm specializing in utility design and utility coordination and provides a wide range of consulting services to both private and public clients.

**HNTB North Carolina, PC**

343 E Six Forks Road,  
Suite 200  
Raleigh, NC 27609  
TEL: (919) 546-8997  
EMAIL: psteinman@hntb.com  
URL: hntb.com  
EMPS: 90  
Primary Contact:  
Spencer Franklin  
sfranklin@hntb.com

**BRANCH:**

121 W. Trade Street, Suite 2050,  
Charlotte, NC 28202  
Contact: Greg Boulanger Direct  
Tel: (704)208-5362  
EMAIL: gboulanger@hntb.com

**HRV, INC.**

Affiliate/Supplier  
420 Rouser Road  
Suite 400, Building 3  
Moon Township, PA 15108  
TEL: (412) 299-2000  
EMAIL: bbender@hrvinc.com  
URL: hrvinc.com  
Primary Contact: Betsy Wehner  
bwehner@hrvinc.com

**DESCRIPTION/DISCIPLINES:** Leading experts in materials quality assurance and quality control inspection, construction management, and construction inspection. We are Quality. Assured.

**Hughes Engineering, PLLC**

1500 Sunday Drive, Suite 101  
Raleigh, NC 27607  
TEL: (919) 897-8900  
EMAIL: rhughes@hugheseng.com  
URL: hugheseng.com  
EMPS: 15  
Primary Contact: Robert Hughes  
rhughes@hugheseng.com

**DESCRIPTION/DISCIPLINES:** Process Engineering, Project Management; Biotechnology, Upstream Fermentation, Downstream Purification; Oral Solid Dosage; Aseptic Formulation/Filling/Finishing; Packaging; High Purity Systems & Utilities; Equipment selection, specification and management; Project Management of all phases: Concept Scope Development, Detail Design, Construction, Validation; Automation & Controls; Detail Design Specifications and Drawings; Regulatory Audits and Guidance;

**Hydrostructures, PA**

126 Commerce Court  
Pittsboro, NC 27312  
TEL: (919) 542-5002  
EMAIL: Gina.Moore@hydrostructures.com  
URL: hydrostructures.com  
EMPS: 52  
Primary Contact: Gina Moore  
Gina.Moore@hydrostructures.com

**DESCRIPTION/DISCIPLINES:**

**DISCIPLINES:** Civil (Environmental); Civil; (General Municipal); Computer Applications; Water



**ICE of Carolinas PLLC**

4505 Falls of Neuse Road  
Suite 110  
Raleigh, NC 27609  
TEL: (984) 255-0410  
EMAIL:  
lynda.monroe@ice-eng.com

URL: ice-eng.com  
EMPS: 14  
Primary Contact: Lynda Monroe  
lynda.monroe@ice-eng.com

DESCRIPTION/DISCIPLINES: Civil (General Municipal); Civil (Structural) Civil (Transportation); Construction Management; Hydrology; Surveying

BRANCHES:  
790 Cardinal Road, Suite 14  
New Bern, NC 28562  
Johnny Metcalfe  
Tel: (252) -75-3208

5200 Seventy Seven Center DR  
Suite 100  
Charlotte, NC 28217  
Jim Cravens  
Tel: (704) 705-3575

**Insurance Management Consultants, Inc. (IMCI)**

Affiliate/Supplier  
PO Box 2490  
Davidson, NC 28036  
TEL: (704) 799-1600  
EMAIL: jeff@imcipls.com  
URL: imcipls.com  
Primary Contact: Jeff Todd  
jeff@imcipls.com

DESCRIPTION/DISCIPLINES:  
Professional Liability, General Insurance, Risk Management Services for design professionals in North Carolina, South Carolina, Virginia, and Tennessee.



**Jamestown Engineering Group, Inc.**  
117 E. Main Street  
Jamestown, NC 27282  
TEL: (336) 886-5523  
EMAIL: dan@jamestownengineering.com  
URL: Jamestownengineering.com  
EMPS: 10

Primary Contact: Daniel Pritchett  
dan@jamestownengineering.com

DESCRIPTION/DISCIPLINES:  
DISCIPLINES: Civil (Environmental); Civil (General Municipal); Hydrology; Planning; Surveying; Water

**JC Waller & Associates**

7-L Dundas Circle  
Greensboro, NC 27407  
TEL: (336) 697-2637  
EMAIL: sbittle@jcwaller.com  
URL: jcwaller.com  
EMPS: 15  
Primary Contact: Sherry Bittle  
sbittle@jcwaller.com

DESCRIPTION/DISCIPLINES:  
DISCIPLINES: Civil (General Municipal); Surveying; Water, Planning

**JDH Structural Engineers, PLLC**

19545 Greentree Way  
Suite B  
Cornelius, NC 28031  
TEL: (704) 997-7072  
EMAIL: dhernandez@jdhengineers.com  
URL: jdhengineers.com  
EMPS: 5  
Primary Contact: Joseph Hernandez  
dhernandez@jdhengineers.com

DESCRIPTION/DISCIPLINES: Civil, Structural

**Johnson Mirmiran & Thompson, Inc.**

1130 Situs Court, Ste 200  
Raleigh, NC 27606  
TEL: (984) 269-4910  
EMAIL: bjenkins@jmt.com  
URL: jmt.com  
EMPS: 19  
Primary Contact: Bill Jenkins  
bjenkins@jmt.com

DESCRIPTION/DISCIPLINES:  
DISCIPLINES: Architectural, Civil (Environmental); Civil (General Municipal); Civil (Geo technical) Civil (Structural); Civil (Transportation); Computer Applications, Construction Management; Electrical; Hazardous

Waste; Hydrology, Industrial, Mechanical; Planning; Surveying; Water' Natural and Cultural Resources



**KCI Associates of NC, PA**

4505 Falls of Neuse Road  
Suite 400  
Raleigh, NC 27609  
TEL: (919) 783-9214  
EMAIL: liz.phipps@kci.com  
URL: kci.com  
EMPS: 186  
Primary Contact: Laurie Arensdorf  
Laurie.Arensdorf@kci.com

DESCRIPTION/DISCIPLINES:  
DISCIPLINES: Civil (Environmental); Civil (General Municipal); Civil (Structural); Civil (Transportation); Communications; Construction Management; Hydrology; Surveying; Resource Management; Water Resources, Water Quality, Water/Wastewater. Power; Subsurface Utility Engineering; Site/Civil; Landscape Architecture; Building Structural.

**Kiewit Engineering Group Inc.**

12510 E Belford Ave  
Englewood, Colorado 80112  
TEL: (303) 269-3100  
EMAIL: John.Donatelli@kiewit.com  
URL: Kiewit.com  
EMPD: 18  
Primary Contact: John Donatelli  
John.Donatelli@kiewit.com

DESCRIPTION/DISCIPLINES:  
Construction-Focused Engineering  
Kiewit engineers are focused on what matters most to you: performance, schedule, safety, total installed and operating costs.

**Kimley-Horn and Associates, Inc.**

421 Fayetteville Street,  
Suite 600

Raleigh, NC 27601  
TEL: (919) 677-2000  
EMAIL: steph.hachem@kimley-horn.com  
URL: kimley-horn.com  
EMPS: 379  
Primary Contact: Steph Hachem  
steph.hachem@kimley-horn.com

DESCRIPTION/DISCIPLINES: Civil (Environmental); Civil (General Municipal); Civil (Structural); Civil (Transportation); Communications; Computer Applications; Hydrology; Planning; Water; Other Studies, Research, and Consulting Engineering Services: Project Feasibility Studies/Economic/; Expert Testimony; Public Outreach/Involvement; Value Engineering.  
Building/Technology Systems: Mechanical/Electrical /Plumbing; Communications, Software Systems; Efficiency Certification Standards, e. g. LEED; Computer/Technology;  
Structural Systems: Foundations; Buildings, Towers, Stadiums, Tunnels, Seismic Design, Bridges.  
Environmental: Noise, Waste Pond Management, Mitigation; Restoration/Reclamation/Remediation; Air Quality  
Water and Stormwater: Wastewater Collection/Treatment and Disposal; Erosion Control.  
Water Resources: Hydraulics; Hydrology; Watershed Management; Flood Risk Management' Coastal and Eco-System Restoration' Surface and Groundwater Supply Development; Water Use Reduction; Locks/Dams/Water Control Structures.  
Transportation: Highways, Basic Research and Studies, Public Transit, Airports, Marine/Ports, Intermodal Facilities.  
Special Projects: Safety and Security; Land Development; Recreational Facilities; Program and Construction Management; Trenchless Technologies; Subsurface Engineering  
Total project construction budget does not exceed \$2.5 Million.

**Kisinger Campo & Associates Corp**  
PNC Plaza  
301 Fayetteville Street, Suite 1500  
Raleigh, NC 27601  
TEL: (919) 882-7839  
EMAIL: sam.cullum@kisingercampo.com  
URL: Kisingercampo.com  
EMPS: 69  
Primary Contact: Paul Foley  
pfoley@KCAeng.com

DESCRIPTION/DISCIPLINES:  
DISCIPLINES: Civil (Environmental); Civil (Structural); Civil (Transportation); Computer Applications

BRANCH:  
PNC Plaza, 301 Fayetteville St.  
Suite 1500  
Raleigh, NC 27601

305 S. Main St.  
Kannapolis, NC 28081

**Kittelson & Associates, Inc.**  
272 N. Front St.  
Suite 410  
Wilmington, NC 28409  
TEL: (800) 878-5230  
EMAIL: bschroeder@kittelson.com  
URL: kittelson.com  
EMPS: 12  
Primary Contact: Bastian Schroeder  
bschroeder@kittelson.com

DESCRIPTION/DISCIPLINES: Kittelson & Associates, Inc., has provided transportation engineering, planning, and research services to government agencies, municipalities, and private organizations since 1985.

BRANCHES:  
Kittelson-Raleigh  
702 Oberlin Road, Suite 450  
Raleigh, NC 27605  
919-926-1291

Kittelson-Wilmington  
272 N Front St, Suite 410  
Wilmington, NC 28401  
910-399-5570

Kittelson-Charlotte  
809 West Hill Street, Suite D  
Charlotte, NC 28208  
980-505-8107

**Kleinfelder**  
9009 Perimeter Woods Drive  
Suite E  
Charlotte, NC 28216  
TEL: (704) 598-1049  
EMAIL: AHadsell@kleinfelder.com  
URL: kleinfelder.com  
EMPS: 106  
Primary Contact: Andrew Hadsell  
AHadsell@kleinfelder.com

DESCRIPTION/DISCIPLINES:  
DISCIPLINES: Civil (Environmental); Civil (General Municipal); Civil (Geotechnical); Civil (Structural); Civil (Transportation); Construction Management; Energy; Hazardous Waste; Hydrogeology; Hydrology; Industrial; Materials Handling; Mining; Planning; Water; Other

BRANCHES:  
Greensboro  
7343 West Friendly Avenue, Suite B  
Greensboro, NC 27410  
Tel: 336-668-0093

Morrisville Branch Office  
3200 Gateway Centre Blvd., Ste. 100  
Greensboro, NC 27410  
Morrisville, NC 27560  
Tel: 919-755-5011

**Koonce, Noble & Associates, Inc.**  
208 E. 5th Street  
PO Box 1027  
Lumberton, NC 28358  
TEL: (910) 738-9376  
EMAIL: knaengineering@att.net  
URL: kooncenobleandassociatesinc.com  
EMPS: 3  
Primary Contact: Lillian Koonce  
knaengineering@att.net

DESCRIPTION/DISCIPLINES:  
DISCIPLINES: Project Feasibility Studies/Economic/; Water Conservation; Value Engineering; Stormwater Management; Wastewater Collection/Treatment and Disposal; Erosion Control; Treatment; Surface and Groundwater Supply Development; Transmission, Distribution & Storage



**LaBella Associates**

400 South Tyron Street  
Suite 1300  
Charlotte, NC 28285  
URL: LabellaPC.com  
EMPS: 59  
Primary Contact: Patrick Waterman  
PWaterman@LaBellaPC.com

**Laurene, Rickher & Sorrell, PC**

8701 Red Oak Blvd., Ste. 500  
Charlotte, NC 28217  
TEL: (704) 522-0495  
EMAIL: mrickher@lrspc.net  
URL: lrspc.net  
EMPS: 13  
Primary Contact: Mark Rickher  
mrickher@lrspc.net

DESCRIPTION/DISCIPLINES:  
DISCIPLINES: Architectural/Structural;  
Computer Applications; Other

**LHC Structural Engineers**

5430 Wade Park Blvd., Ste.400  
Raleigh, NC 27607  
TEL: (919) 832-5587  
EMAIL: blasater@lhcengineers.com  
URL: lhcengineers.com  
EMPS: 18  
Primary Contact: Robert Lasater  
blasater@lhcengineers.com

DESCRIPTION/DISCIPLINES:  
DISCIPLINES: Structural

**Lindsay Transportation**

Affiliate/Supplier  
18135 Burke St.  
Omaha, NE 68022  
TEL: (402) 206-6014  
EMAIL: mark.bedard@lindsay.com  
URL: lindsay.com  
Primary Contact: Mark Bedard  
mark.bedard@lindsay.com

DESCRIPTIONS/DISCIPLINES:  
Our flagship product, the Road Zipper System®, provides a real-time movable barrier solution for Construction and Managed Lanes projects

**LJB Inc.**

1401 Aversboro Road,  
Suite 215  
Garner, NC 27529  
TEL: (919) 594-6735  
EMAIL: rcanales@LJBinc.com  
URL: ljbinc.com/  
EMPS: 18  
Primary Contact: Roberto Canales  
rcanales@LJBinc.com

DESCRIPTION/DISCIPLINES: Created In 1966, LJB is a company fueled by integrity, quality and service. Today, our diverse and talented staff provides multimodal transportation, highway, bridge, traffic, water resources, water resources - hydraulics and hydrology, site-civil, building structural engineering, environmental and safety services.  
DISCIPLINES: Multimodal transportation, road, bridge, traffic, site-civil, water resources, dam safety and assessments, and building structural engineering, NEPA/SEPA environmental and safety services

**LMHT Associates**

3005 Carrington Mill Blvd  
Suite 150  
Morrisville, NC 27560  
TEL: (919) 544-0087  
EMAIL: rthornton@lmht.com  
URL: lmht.com  
EMPS: 23  
Primary Contact: Michael Payne  
mpayne@lmht.com

DESCRIPTION/DISCIPLINES: Provides comprehensive design services including Architectural, Plumbing, Mechanical, and Electrical Engineering with many licensed Architects and Engineers on staff. We are capable of working on individual and national corporate multi-site projects in 48 states. This includes renovations, end

caps, in-line up-fits, and free standing projects

**Lochner**

2840 Plaza Place, Ste. 202  
Raleigh, NC 27612  
TEL: (919) 571-7111  
EMAIL: ksmith@hwlochner.com  
URL: hwlochner.com  
EMPS: 11  
Primary Contact: Kenneth Smith  
ksmith@hwlochner.com

DESCRIPTION/DISCIPLINES:  
DISCIPLINES: Civil (Environmental); Civil (General Municipal); Civil (Structural); Civil (Transportation); Construction Management; Hydrogeology; Hydrology; Planning; Water; Other

**Locklear, Locklear & Jacobs, PLLC**

114 W. 3rd Street  
P.O. Box 3119  
Pembroke, NC 28372  
TEL: (910) 774-9306  
EMAIL: Jonathanlocklear@llandj.com  
URL: llanj.com  
EMPS: 6  
Primary Contact: Jonathan Locklear  
Jonathanlocklear@llandj.com

DESCRIPTION/DISCIPLINES:  
DISCIPLINES: Civil and Environmental Engineering; Structural Engineering and Foundation Design; Mechanical/Electrical/Plumbing (MEP) Engineering; Renovations and Retrofitting; Performance Contracting

**Lynch Mykins**

301 N. West Street  
Suite 105  
Raleigh, NC 27603  
TEL: (919) 782-1833  
EMAIL: alynch@lynchmykins.com  
URL: lynchmykins.com  
EMPS: 13  
Primary Contact: Dave Mykins  
dmykins@lynchmykins.com

DESCRIPTION/DISCIPLINES:  
DISCIPLINES: Architectural/Structural;  
Civil (Structural)



**Maple Engineering, PLLC**

708 St. Mary's Street  
Raleigh, NC 27605  
TEL: (919) 341-4247  
EMAIL: admin@maple-eng.com  
URL: maple-eng.com  
EMPS: 16  
Primary Contact: Lori White  
admin@maple-eng.com

DESCRIPTION/DISCIPLINES: AutoCAD  
- Drawing Production, REVIT - Building  
Information Modeling (BIM), Carrier  
HAPS - HVAC Load Software, Visual  
- Lighting Modeling Software,  
E-Quest - Energy Modeling, Adobe  
PDF - Document Transmitting, Digital  
Pictures & Video, FTP - Document  
Receiving & Delivery, Web Based  
Video Conferencing, LEED Design ,  
Energy Modeling, Site Lighting Design,  
As-Built Drawings, Construction  
Administration, Existing Building Audits  
& Troubleshooting

**Mattern & Craig, Inc.**

12 Broad Street  
Asheville, NC 28801  
TEL: (828) 254-2201  
EMAIL: jbvoso@matternandcraig.com  
URL: matternandcraig.com  
EMPS: 16  
Primary Contact: James Voso  
jbvoso@matternandcraig.com

DESCRIPTION/DISCIPLINES:  
DISCIPLINES: Civil (General Municipal);  
Civil (Structural); Civil (Transportation);  
Hydrology; Industrial; Planning;  
Surveying; Water; Wastewater

**MBD Consulting Engineers, PA**

760-A NW Broad St  
PO Box 1215  
Southern Pines, NC 28387  
TEL: (336) 629-3931  
EMAIL: cmcgougan@mbd-eng.com  
URL: mbd-eng.com

EMPS: 11  
Primary Contact: Joe McGougan  
cmcgougan@mbd-eng.com

DESCRIPTION/DISCIPLINES:  
DISCIPLINES: Architectural/Structural;  
Civil (Environmental); Civil (General  
Municipal); Communications; Materials  
Handling

**MBP Carolinas**

3200 Beechleaf Court  
Ste 910  
Raleigh, NC 27604  
TEL: (919) 875-0124  
EMAIL: klugo@mbpce.com  
URL: mbpce.com  
EMPS: 17  
Primary Contact: Kevin Lugo  
klugo@mbpce.com

DESCRIPTION/DISCIPLINES:  
DISCIPLINES: Construction  
Management, Other

**McAdams Company**

2905 Meridian Parkway  
Durham, NC 27713  
TEL: (919) 361-5000  
EMAIL: mcadams@mcadamsco.com  
URL: mcadamsco.com  
EMPS: 323  
Primary Contact: Iona Thomas  
thomas@mcadamsco.com

DESCRIPTION/DISCIPLINES: Acoustical;  
Architectural/Structural; Civil  
(Environmental, General Municipal,  
Geotechnical, Structural, Transportation)  
Cogeneration; Communications;  
Computer Applications; Construction  
Management; Electrical; Energy;  
Hazardous Waste; Hydrogeology;  
Hydrology; Industrial; Materials  
Handling; Mechanical; Mining; Planning;  
Water; Wastewater, Stormwater

BRANCHES:

2905 Meridian Parkway, Durham, NC  
27713

One Glenwood Avenue, Suite 201,  
Raleigh, NC 27603

3430 Toringdon Way, Suite 110,  
Charlotte, NC 28277

**McCormick Taylor, Inc.**

5400 Trinity Rd, Suite 102  
Raleigh, NC 27607  
TEL: (919) 233-8965  
EMAIL: kmhagner@mccormicktaylor.com  
URL: mccormicktaylor.com  
EMPS: 5  
Primary Contact: Brian Roberts  
btroberts@mccormicktaylor.com

DESCRIPTION/DISCIPLINES:  
DISCIPLINES: Civil (Environmental); Civil  
(Geotechnical); Civil (Transportation);  
Communications; Hydrology; Planning

**McDavid Associates, Inc.**

3714 N. Main Street  
Farmville, NC 27828  
TEL: (252) 753-2139  
EMAIL: apc@mcdavid-inc.com  
URL: mcdavid-inc.com  
EMPS: 45  
Primary Contact: Richard Moore  
rbm@mcdavid-inc.com  
DESCRIPTION/DISCIPLINES:  
DISCIPLINES: Civil (General Municipal);  
Hydrogeology; Hydrology; Planning;  
Surveying; Water

**McGill Associates, PA**

55 Broad Street  
Asheville, NC 28801  
TEL: (828) 252-0575  
URL: mcgillassociates.com  
EMPS: 140  
Primary Contact: Andy Lovingood  
andy.lovingood@

DESCRIPTION/DISCIPLINES:  
DISCIPLINES: Civil (Environmental);  
Civil (General Municipal); Construction  
Management; Electrical; Planning;  
Surveying; Water; Other

**McKim & Creed, Inc.**

1730 Varsity Drive, Ste. 500  
Raleigh, NC 27606  
TEL: (919) 233-8091  
EMAIL: mdaves@mckimcreed.com  
URL: mckimcreed.com

**EMPS: 223**

Primary Contact: John Lucey  
jlucey@mckimcreed.com

**DESCRIPTION/DISCIPLINES:**

**DISCIPLINES:** Civil (Environmental); Civil (General Municipal); Civil (Structural); Civil (Transportation); Construction Management; Electrical; Energy; Hydrogeology; Hydrology; Mechanical; Planning; Surveying; Water; Other

**BRANCHES**

370 North Louisiana Ave., Suite F-3,  
Asheville, NC 28806, 828-252-8181,  
Contact: Rick Cooper  
rcooper@mckimcreed.com

8020 Tower Point Drive, Charlotte, NC  
28227, 704-841-2588,  
Contact: Don Hamburger, PE,  
dhamburger@mckimcreed.com

243 North Front Street, Wilmington, NC  
28401, 910-343-1048,  
Contact: Marianna Boucher,  
mboucher@mckimcreed.com

**Mead & Hunt, Inc.**

111 E. Hargett St.  
Suite 300  
Raleigh, NC 27601  
TEL: (919) 714-8670  
URL: meadhunt.com  
EMPS: 13  
Primary Contact: Rick DeCola  
rick.decola@meadhunt.com

**DESCRIPTION/DISCIPLINES:** Studies, Research, and Consulting Engineering Services: Project Feasibility Studies/Economic;/ Water Conservation; Public Outreach/Involvement. Structural Systems: Bridges. Water and Stormwater: Stormwater Management; Erosion Control. Water Resources: Hydraulics, Hydrology. Transportation: Highways, Airports

**BRANCH OFFICE:**

10130 Perimeter Parkway  
Suite 200  
Charlotte, NC 28216

**Medallion Insurance Services**

Affiliate/Supplier  
3540 Toringdon Way, Ste. 200  
Charlotte, NC 28277  
TEL: 704-256-6000  
EMAIL: joe@medallionpro.com  
URL: medallionpro.com  
Primary Contact: Joe Minervini  
joe@medallionpro.com

**DESCRIPTION/DISCIPLINES:** Providing professional liability insurance for architects and engineers.

**DESCRIPTION:** Medallion Insurance Services provides Professional Liability Insurance to Architects, Engineers, Surveyors, CPA's, Accountants and other professionals. We are an independent insurance broker and specialize in Professional Liability/E&O Insurance. We also offer customized insurance solutions for General Liability, Workers Compensation, EPLI, Property and other insurance products for clients.

**Medlock & Associates Engineering, PA**

53 Asheland Ave, Suite 101  
Asheville, NC 28801  
TEL: (828) 232-4448  
EMAIL: croberts@medlockengr.com  
URL: medlockengr.com  
EMPS: 12  
Primary Contact: Coreen Roberts  
croberts@medlockengr.com

**DESCRIPTION/DISCIPLINES:** Structural engineering firm

**MI Engineering, PLLC**

1011 Schaub Drive, Ste. 100  
Raleigh, NC 27606  
TEL: (919) 851-6606  
EMAIL: morrisi@mi-engineers.com  
URL: mi-engineers.com  
EMPS: 10  
Primary Contact: Morris Israelnaim  
morrisi@mi-engineers.com

**DESCRIPTION/DISCIPLINES:** Architectural/Structural; Civil (General Municipal); Civil (Structural); Civil (Transportation); Construction Management; Hydrogeology; Hydrology; Other

**Michael Baker International**

8000 Regency Parkway,  
Ste. 600  
Cary, North Carolina 27518  
TEL: (919) 463-5488  
EMAIL: dhathaway@mbakerintl.com  
URL: mbakerintl.com  
EMPS: 154  
Primary Contact: Dwain Hathaway  
Dhathaway@mbakerintl.com

**DESCRIPTION/DISCIPLINES:**

**DISCIPLINES:** Civil (Environmental); Civil (General Municipal); Civil (Structural); Civil (Transportation); Computer Applications; Construction Management; Hydrology; Hydrogeology; Industrial; Planning; Surveying; Water; Other

**Mid-Atlantic Associates, Inc.**

409 Rogers View Court  
Raleigh, NC 27610  
TEL: (919) 250-9918  
EMAIL: dmccclure@maaonline.com  
URL: maaonline.com  
EMPS: 17  
Primary Contact: Darin McClure  
dmccclure@maaonline.com

**DESCRIPTION/DISCIPLINES:**

**DISCIPLINES:** Civil (Environmental); Phase I & II Environmental Assessments, Contaminant Assessment, Hazardous Waste; Brownfields, Remediation, Hydrology

**BRANCHES:**

1125 East Morehead Street, Suite #104  
Charlotte, North Carolina 28204  
(980) 585-1271  
Greg D. Icenhour  
Gicenhour@maaonline.com

**Modjeski and Masters, Inc.**

333 Fayetteville Street  
Suite 500  
Raleigh, NC 27601  
TEL: 919-831-4765  
EMAIL: jrdoughty@modjeski.com  
URL: modjeski.com  
EMPS: 70  
Primary Contact: Jason Doughty  
jrdoughty@modjeski.com

DESCRIPTION/DISCIPLINES: Discipline:  
Transportation

**BRANCHES:**

100 Sterling Parkway,  
Suite 302,  
Mechanicsburg, PA 17050

**Moffatt & Nichol**

4700 Falls of Neuse, Ste 300  
Raleigh, NC 27609  
TEL: (919) 781-4626  
EMAIL: treid@moffattnichol.com  
URL: moffattnichol.com  
EMPS: 70  
Primary Contact: Timothy Reid  
treid@moffattnichol.com

DESCRIPTION/DISCIPLINES:

DISCIPLINES: Civil (Environmental); Civil  
(General Municipal); Civil (Geotechnical);  
Civil (Structural); Civil (Transportation);  
Computer Applications; Construction  
Management; Electrical; Energy;  
Hydrology; Industrial; Materials  
Handling; Mechanical; Planning; Water;  
Other

**Morningstar Law Group**

Affiliate/Supplier  
421 Fayetteville Street,  
Suite 530  
Raleigh, NC 27601  
TEL: (919) 590-0375  
EMAIL: ghale@morningstarlawgroup.  
com  
URL: morningstarlawgroup.com  
Primary Contact: Grayson Hale  
ghale@morningstarlawgroup.com

DESCRIPTION/DISCIPLINES: Raleigh  
based full service business and  
litigation law firm where partner  
Grayson S. Hale leads its practice  
in representing engineering and  
related professional firms in mergers,  
acquisitions, ownership transition,  
licensing and other business matters.

**Mosher Engineering, Inc.**

409-B Rogers View Court  
Raleigh, NC 27610  
TEL: (919) 856-1550  
EMAIL: cwarr@mosherengineering.com

URL: mosherengineering.com  
EMPS: 9  
Primary Contact: Christina Warr  
cwarr@cti-consultants.com

DESCRIPTION/DISCIPLINES:

DISCIPLINES: Civil (Environmental);  
Civil (Geotechnical); Hydrology;  
Hydrogeology; Other

**Mott MacDonald**

7621 Purfoy Road, Ste.115  
Suite 115  
Fuquay-Varina, NC 27526  
TEL: (919) 552-2253  
EMAIL: glenda.gibson@mottmac.com  
URL: mottmacamericas.com/  
EMPS: 69  
Primary Contact: Glenda Gibson  
Glenda.Gibson@mottmac.com

DESCRIPTION/DISCIPLINES:

DISCIPLINES: Civil (Environmental);  
Civil (Structural); Civil (Transportation);  
Planning; Hydro

BRANCH/SATELLITE:

1101 Haynes Street,  
Suite 101  
Raleigh, NC 27604

**MS Consultants, Inc.**

5444 Wade Park Blvd  
Suite 160  
Raleigh, NC 27607  
TEL: (919) 772-5565  
EMAIL: LSamples@msconsultants.com  
URL: msconsultants.com  
EMPS: 18  
Primary Contact: Walt Gray  
wgray@msconsultants.com

DESCRIPTION/DISCIPLINES:

ms is a multidiscipline engineering,  
architecture, and planning firm for  
the transportation, environmental,  
architecture, commercial, retail,  
sustainability, railroad and construction  
industries.

DISCIPLINES: Acoustical; Architectural/  
Structural; Civil (Environmental);  
Civil (General Municipal); Civil  
(Structural); Civil (Transportation);  
Construction Management; Electrical;

Energy; Hazardous Waste; Hydrology;  
Hydrogeology; Industrial; Materials  
Handling; Mechanical; Planning;  
Surveying; Water; Other



**Nexsen Pruet**

Affiliate/Supplier  
4141 Parklake Avenue,  
Suite 200  
Raleigh, NC 27612  
TEL: (919) 755-1800  
EMAIL: Dferrell@nexsenpruet.com  
URL: http://www.nexsenpruet.com  
Primary Contact: David Ferrell  
Dferrell@nexsenpruet.com

DESCRIPTION/DISCIPLINES: Nexsen

Pruet is a multi-discipline law firm  
with over 190 lawyers in eight offices  
throughout North and South Carolina.  
Our practices include, but are not  
limited to legislative/regulatory/  
government relations, banking and  
finance, construction, corporate,  
economic development, employment,  
environmental, IP, litigation, real estate,  
and tax. We represent businesses and  
professionals working in virtually every  
industry.

**Noble Structural Group, PLLC**

17505 W. Catawba Ave.  
Suite 220  
Cornelius, NC 28031  
TEL: (704) 606-2233  
URL: noblestructural.com  
EMPS: 4  
Primary Contact: John Noble  
jnoble@noblestructuralgroup.com

DESCRIPTION/DISCIPLINES: Disciplines:

Civil, Structural  
LHT and CASE

**North State Environmental**

2889 Lowery Street  
Winston-Salem, NC 27101  
TEL: (336) 725-2010  
URL: nsenv.com

EMPS: 51  
Primary Contact: Darrell Westmoreland  
darrell@nsenv.com

**NOVA Engineering & Environmental, Inc.**

Suite 105  
Raleigh, NC 27604  
TEL: (984) 242-1950  
EMAIL: mbahi@usanova.com  
URL: usanova.com  
EMPS: 19  
Primary Contact: Thomas Bartlett  
tbartlett@usanova.com

**DESCRIPTION/DISCIPLINES:**

Nova provides engineering consulting services, geotechnical and environmental engineering, construction support and materials testing services

**NV5**

P.O. Box 33127  
Raleigh, NC 27636  
TEL: (919) 836-4800  
URL: nv5.com  
EMPS: 180  
Primary Contact: Jill Heath  
Jill.Heath@nv5.com

**DESCRIPTION/DISCIPLINES:**

**DISCIPLINES:** Civil (Environmental); Civil (General Municipal); Civil (Structural); Civil (Transportation); Civil (Traffic); Construction Management; Hydrology; Planning; Surveying; Water; Sub-Surface Utility Engineering; AV and Acoustics

**NXL Construction Services, Inc**

114 E Cary Street  
Richmond, VA 23219  
TEL: (804) 644-4600

ACEC of North Carolina  
advocates for **ECONOMIC DEVELOPMENT** in every county of our state and lobbies for the competitive programs to grow jobs and the economy.

EMAIL: eripka@nxl.com  
URL: nxl.com  
EMPS: 3  
Primary Contact: Emily Ripka  
eripka@nxl.com

**DESCRIPTION/DISCIPLINES:** NXL is a leading group of talented transportation engineers, surveyors, and construction managers who provide their clients with services of the highest caliber.



**O. R. Colan Associates**

Affiliate/Supplier  
7005 Shannon Willow Road, Suite 100  
Charlotte, NC 28226  
TEL: (704) 944-1406  
EMAIL: schastain@orcolan.com  
URL: orcolan.com  
Primary Contact: Steve Chastain  
schastain@orcolan.com

**DESCRIPTION/DISCIPLINES:** Founded in 1969, O.R. Colan Associates (ORC) is the nation's oldest firm specializing exclusively in land acquisition, relocation, and program management for public works projects.

**DESCRIPTION:** Land acquisition, residential & commercial relocation, property management, appraisal, training to public & private agencies, and program management for public work projects.

**Orsborn Engineering Group, PA**

605 Lexington Ave, Suite 301  
Charlotte, NC 28203  
TEL: 7047491432  
EMAIL: aorsborn@orsborn-eng.com  
URL: orsborn-eng.com/  
EMPS: 11  
Primary Contact: Amanda Orsborn  
aorsborn@orsborn-eng.com

**DESCRIPTION/DISCIPLINES:** civil engineering design, landscape architect, design and project management



**Pabst Design Group**

107 Fayetteville St.  
Suite 200  
Raleigh, NC 27601  
TEL: (919) 848-4399  
EMAIL: dpabst@pabstdesign.com  
URL: pabstdesign.com  
EMPS: 8  
Primary Contact: Phillip (Dan) Pabst  
dpabst@pabstdesign.com

**DESCRIPTION/DISCIPLINES:**

**DISCIPLINES:** Civil (General Municipal); Construction Management; Surveying/Site/Civil, Land Development, Landscape Architecture, Planning

**Parrish and Partners**

1801 Stanley Road, Ste. 104  
Greensboro, NC 27407  
TEL: (336) 944-6880  
EMAIL: Jkirby@parrishandpartners.com  
URL: parrishandpartners.com  
EMPS: 9  
Primary Contact: Jeff Kirby  
Jkirby@parrishandpartners.com

**DESCRIPTION/DISCIPLINES:**

Civil (Environmental); Civil (Transportation); Construction Management; Planning

**Parsons**

5540 Centerview Drive, Ste. 217  
Raleigh, NC 27606  
TEL: (919) 854-1370  
EMAIL: ed.robbs@parsons.com  
URL: parsons.com  
EMPS: 10  
Primary Contact: Ed Robbins  
ed.robbs@parsons.com

**DESCRIPTION/DISCIPLINES:**

**DISCIPLINES:** Civil (Environmental); Civil (General Municipal); Civil (Structural); Civil (Transportation); Planning



**Pennoni**

5430 Wade Park Blvd  
Suite 106  
Raleigh, NC 27607  
TEL: (919) 230-9204  
EMAIL: akimball@pennoni.com  
URL: pennoni.com  
EMPS: 14  
Primary Contact: April Holloway  
aholloway@pennoni.com

DESCRIPTION/DISCIPLINES: Consulting Engineering Firm

**Perigon International**

931 Industrial Drive  
Matthews, NC 28105  
TEL: (704) 246-2000  
EMAIL: lillian.mcrae@perigoneng.com  
URL: perigoneng.com  
EMPS: 26  
Primary Contact: Lillian Mcrae  
lillian.mcrae@perigoneng.com

DESCRIPTION/DISCIPLINES: Civil (Structural), Communications, Construction Management, Industrial, Materials Handling, Mechanical, Planning, Other

**PHC Engineering PLLC**

8511 Norcross Road  
Colfax, NC 27235  
TEL: (336) 992-1355  
EMAIL: jfarber@piedmonthoist.com  
URL: piedmonthoist.com  
EMPS: 62

Primary Contact: Rich Burns  
rburns@piedmonthoist.com  
DESCRIPTION/DISCIPLINES: Piedmont Hoist & Crane manufactures overhead cranes and crane components in Colfax, NC.

**Piedmont Design Associates, PA**

125 East Plaza Drive, Ste. 101  
 Mooresville, NC 28115  
TEL: (704) 664-7888  
EMAIL: dmunday@pdapa.com  
URL: pdapa.com  
EMPS: 7  
Primary Contact: Donald Munday  
dmunday@pdapa.com

DESCRIPTION/DISCIPLINES:  
DISCIPLINES: Civil (General Municipal);  
Planning; Surveying

**Progressive Design Collaborative, Ltd.**

3101 Poplarwood Ct, Suite 320  
Raleigh, NC 27604  
TEL: (919) 790-9989  
EMAIL: scampbell@pdcengineers.com  
URL: pdcengineers.com  
EMPS: 14  
Primary Contact: Steve Campbell  
scampbell@pdcengineers.com

DESCRIPTION/DISCIPLINES: Studies, Research, and Consulting Engineering Services: New Products, Materials and Technologies; Basic Research and Studies; Technical Papers; Project Feasibility Studies/Economic/; Water Conservation; Expert Testimony; Computer/Software Technology; Public Outreach/Involvement; Security Plans; Value Engineering. Building/Technology Systems: Mechanical/Electrical / Plumbing; Communications; Software Systems; Efficiency Certification Standards, e.g. LEED; Secure Facilities (Military, Research, Correctional); Computer/Technology; Computer/Software Technology; Acoustics; Sustainability or Carbon Neutrality; Energy Efficiency - New and Retrofit. Special Projects: Recreational Facilities.

**Pyramid Environmental & Engineering, PC**

503 Industrial Ave  
Greensboro, NC 27406  
TEL: (336) 335-3174  
EMAIL:  
doug@pyramidenvironmental.com  
URL: pyramidenvironmental.com  
EMPS: 10  
Primary Contact: Doug Canavello  
doug@pyramidenvironmental.com

DESCRIPTION/DISCIPLINES: Hazardous Waste; Restoration/Reclamation/Remediation; Air Quality; Stormwater Management; Hydraulics, Hydrology Subsurface Engineering; geophysical surveys and utility locating.

**Ragsdale Liggett PLLC**

Affiliate/Supplier  
2840 Plaza Place, Ste. 400  
Raleigh, NC 27612  
TEL: (919) 787-5200  
EMAIL: jnunnally@rl-law.com  
URL: rl-law.com  
Primary Contact: John Nunnally  
jnunnally@rl-law.com

DESCRIPTION/DISCIPLINES: Ragsdale Liggett provides legal services for Engineering Firms

**Ramey Kemp Associates, Inc.**

5808 Faringdon Place, Ste. 100  
Raleigh, NC 27609  
TEL: (919) 872-5115  
EMAIL: mirvin@rameykemp.com  
URL: rameykemp.com  
EMPS: 56  
Primary Contact: Montell Irvin  
mirvin@rameykemp.com

DESCRIPTION/DISCIPLINES:  
DISCIPLINES: Civil (Environmental); Civil (General Municipal); Civil (Transportation); Construction Management; Planning. Transportation Consulting Services

**Reece, Noland & McElrath, Inc.**

94 Main Street  
Canton, NC 28716  
TEL: (828) 492-0677  
EMAIL: skaufman@rnm-engineers.com  
URL: rnm-engineers.com  
EMPS: 15  
Primary Contact: Stephen Kaufman  
skaufman@rnm-engineers.com

DESCRIPTION/DISCIPLINES: Studies, Research, and Consulting Engineering Services: Project Feasibility Studies/Economic, Value Engineering. Building/Technology Systems: Mechanical/Electrical /Plumbing, Efficiency Certification Standards, e.g. LEED, Energy Efficiency - New and

Retrofit. Water Resources: Water Use Reduction. Energy: Renewable Energy, Energy Usage Reduction Programs. Industrial and Manufacturing Processes and Facilities: Biotech, Manufacturing.

**REI Engineers, Inc.**

9121 Anson Way, Ste 100  
Raleigh, NC 27615  
TEL: (919) 845-1450  
EMAIL: shinesley@reiengineers.com  
URL: reiengineers.com  
EMPS: 52  
Primary Contact: Scott Hinesley  
shinesley@reiengineers.com

DESCRIPTION/DISCIPLINES:  
DISCIPLINES: Other (Building envelopes)

**BRANCHES**

**CHARLOTTE**

1927 JN Pease Place,  
Suite 201  
Charlotte, NC 28262  
(704) 596-0331  
David Honeycutt, dhoneycutt@  
reiengineers.com

**GREENVILLE**

704 Cromwell Dr  
Suite A  
Greenville, NC 27858  
(252) 752-1992  
Kevin Burch, kburch@reiengineers.com

**Rice LLC - Planning & Environmental Services**

Associate (Non Lic.)  
107 Craven Hill Court  
Cary, NC 27518  
TEL: (919) 539-0713  
EMAIL: brice@rice-usa.com  
URL: rice-usa.com  
EMPS: 2  
Primary Contact: William Rice II, AICP  
brice@rice-usa.com

DESCRIPTION/DISCIPLINES: Rice LLC is an SPSF planning and environmental firm with nearly 30 years experience providing NEPA and SEPA Environmental Impacts Analysis (CE/EA/EIS), public involvement and Phase I services.

**Richard Grubb & Associates (RGA), Incorporated (RGA, Incorporated)**

Associate (Non Lic.)  
525 Wait Avenue  
Wake Forest, NC 27587  
TEL: (919) 219-1489  
EMAIL: eturco@rgaincorporated.com  
URL: rgaincorporated.com  
EMPS: 4  
Primary Contact: Ellen Turco  
eturco@rgaincorporated.com

DESCRIPTION/DISCIPLINES: RGA, Inc. is a full-service cultural resource management firm with a staff of professional historians, archaeologists, architectural historians, material culture specialists, and GIS experts.

**Rinker Design Associates, PC**

11100 Endeavor Court  
Suite 200  
Manassas, VA 20109  
TEL: (703) 368-7373  
EMAIL: dfischer@rdacivil.com  
URL: rdacivil.com  
EMPS: 2  
Primary Contact: Darell Fischer  
dfischer@rdacivil.com

DESCRIPTION/DISCIPLINES: RDA is a leading provider of professional transportation engineering services on design-bid-build and design-build projects. We specialize in roadway, structures, drainage, and utility design/coordination

**Rivers & Associates, Inc.**

107 E. 2nd Street  
Greenville, NC 27858  
TEL: (252) 752-4135  
EMAIL: gchurchill@riversandassociates.com  
URL: riversandassociates.com  
EMPS: 36  
Primary Contact: Donnie Brewer  
dbrewer@riversandassociates.com

DESCRIPTION/DISCIPLINES: Civil (Environmental); Civil (General Municipal); Civil (Transportation); Construction Management; Hydrology; Planning; Surveying; Water

**RS&H Architects-Engineers-Planners, Inc.**

1520 South Blvd  
Suite 200  
Charlotte, NC 28203  
TEL: (704) 752-0610  
EMAIL: chad.critcher@rsandh.com  
URL: rsandh.com  
EMPS: 90  
Primary Contact: Jennifer Farino  
jennifer.farino@rsandh.com

DESCRIPTION/DISCIPLINES:  
DISCIPLINES: Civil (General Municipal); Civil (Transportation)

**Rummel Klepper & Kahl, LLP**

8601 Six Forks Rd., Forum 1 Suite 700  
Raleigh, NC 27615  
TEL: (919) 878-9560  
EMAIL: kskinner@rkk.com  
URL: www.rkk.com  
EMPS: 350  
Primary Contact: Keith Skinner  
kskinner@rkk.com

DESCRIPTION/DISCIPLINES:  
DISCIPLINES: Acoustical; Civil (Environmental); Civil (General Municipal); Civil (Structural); Civil (Transportation); Construction Management; Energy; Hydrology; Planning; Water; Other



**S&ME, Inc.**

2724 Discovery Dr., Ste. 120  
Raleigh, NC 27616  
TEL: (800) 849-2517  
EMAIL: bmclester@smeinc.com  
URL: smeinc.com  
EMPS: 357  
Primary Contact: Matt Ryan  
mryan@smeinc.com

DESCRIPTION/DISCIPLINES:  
DISCIPLINES: Civil (Environmental); Civil (General Municipal); Civil (Geotechnical); Civil (Transportation); Hazardous Waste; Hydrogeology; Hydrology; Industrial;

Materials Handling; Planning; Water;  
Other

**Saber Engineering, PA**

2923 S. Tryon Street  
Suite 280  
Charlotte, NC 28203  
TEL: (704) 373-0068  
EMAIL: JAT@saberengineering.com  
URL: saberengineering.com  
EMPS: 11  
Primary Contact: James Tribble  
JAT@saberengineering.com

DESCRIPTION/DISCIPLINES:  
DISCIPLINES: Electrical, Mechanical &  
Plumbing

**Safran Law Offices**

Affiliate/Supplier  
120 S. Boylan Ave.  
Raleigh, NC 27603  
TEL: (919) 828-1396  
EMAIL: psafra@safranlaw.com  
URL: safranlaw.com  
Primary Contact:  
Perry Safran  
psafra@safranlaw.com

DESCRIPTION/DISCIPLINES: A law firm  
offering legal council for the design  
build construction industry.

**Salas O'Brien**

1620 Midtown Place  
Raleigh, NC 27609  
TEL: (919) 832-8118  
EMAIL: bill.smith@salasobrien.com  
URL: stanfordwhite.com  
EMPS: 26  
Primary Contact: Bill Smith  
bill.smith@salasobrien.com

DESCRIPTION/DISCIPLINES:  
DISCIPLINES: Mechanical; Electrical

**SAM LLC**

2641-116 Sumner Boulevard  
Raleigh, NC 27616  
TEL: (919) 878-7466  
EMAIL: keith.garry@sam.biz  
URL: sam.biz  
EMPS: 40

Primary Contact: Keith Garry  
keith.garry@sam.biz

DESCRIPTION/DISCIPLINES: Providing  
full service Subsurface Utility  
Engineering, Utility Coordination, Land  
Surveying, Mobile & Airborne LiDAR,  
Photogrammetry and Construction  
Phase services.  
DISCIPLINES: Civil (Environmental,  
General Municipal, Structural,  
Transportation); Construction  
Management; Planning

**Schnabel Engineering South, P.C.**

11 A Oak Branch Drive  
Greensboro, NC 27407  
TEL: (336) 274-9456  
EMAIL: tfitzgerald@  
schnabel-eng.com  
URL: schnabel-eng.com  
EMPS: 44  
Primary Contact: Thomas Fitzgerald  
tfitzgerald@schnabel-eng.com

DESCRIPTION/DISCIPLINES:  
DISCIPLINES: Civil (Environmental); Civil  
(Geotechnical); Civil (General Municipal);  
Civil (Structural), Construction  
Management; Hydrogeology; Hydrology;  
Water; Risk Analysis

**SEPI, Inc.**

1 Glenwood Avenue  
Suite 600  
Raleigh, NC 27603  
TEL: (919) 789-9977  
EMAIL: sthomas@sepiengineering.com  
URL: sepiinc.com  
EMPS: 166  
Primary Contact: Steven Thomas  
sthomas@sepiinc.com

DESCRIPTION/DISCIPLINES:  
DISCIPLINES: Civil (Environmental);  
Civil (General Municipal); Civil  
(Transportation); Construction  
Management; Energy; Hazardous  
Waste; Hydrogeology; Hydrology;  
Planning; Surveying; Water; Subsurface  
utility exploration; UAV

**Simpson Engineers & Associates,  
PC**

5640 Dillard Drive, Ste. 200  
Cary, NC 27518  
TEL: (919) 852-0468  
EMAIL: dsimpson@simpsonengr.com  
URL: simpsonengr.com  
EMPS: 36  
Primary Contact: David Simpson  
dsimpson@simpsonengr.com

DESCRIPTION/DISCIPLINES:  
DISCIPLINES: Civil (Environmental); Civil  
(General Municipal); Civil (Structural);  
Civil (Transportation); Construction  
Management; Other

**SKA Consulting Engineers, Inc.**

7900 Triad Center Drive  
Suite 200  
Greensboro, NC 27409  
TEL: (336) 855-0993  
EMAIL: sprobinson@skaeng.com  
URL: skaeng.com  
EMPS: 97  
Primary Contact: Stephen Robinson  
sprobinson@skaeng.com

DESCRIPTION/DISCIPLINES:  
DISCIPLINES: Civil (Structural);  
Electrical; Industrial; Mechanical

**Soil & Environmental Consultants,  
PA**

8412 Falls of Neuse Road  
Suite 104  
Raleigh, NC 27615  
TEL: (919) 846-5900  
EMAIL: psmith@sandec.com  
URL: sandec.com  
EMPS: 13  
Primary Contact: Patrick Smith  
psmith@sandec.com

DESCRIPTION/DISCIPLINES: S&EC, is  
a multi-disciplinary engineering and  
environmental consulting firm that has  
advanced the concept of providing a  
total package of consulting services to  
public and private clients.

**Sole Source Engineering PC**

207 East Main Street  
 Gibsonville, NC 27249  
 TEL: (336) 446-6911  
 EMAIL: jpeacock@triad.rr.com  
 EMPS: 2  
 Primary Contact: Jimmy Peacock  
 jpeacock@triad.rr.com

**DESCRIPTION/DISCIPLINES:**  
 Engineering Services

**Stambaugh Ness**

Affiliate/Supplier  
 1005 Broad St.  
 Suite 302  
 Augusta, GA 30901  
 TEL: (800) 745-8233  
 EMAIL: mtoole@stambaughness.com  
 URL: stambaughness.com  
 Primary Contact: Mindy Toole  
 mtoole@stambaughness.com

**DESCRIPTION/DISCIPLINES:** Certified  
 Public Accountant firm focusing on  
 A/E/C firms nationwide

**Stantec**

801 Jones Franklin Rd  
 Suite 300  
 Raleigh, NC 27606  
 TEL: (919) 851-6866  
 EMAIL: tim.jenkins@stantec.com  
 URL: stantec.com/  
 EMPS: 150  
 Primary Contact: Christa Greene  
 christa.greene@stantec.com

**DESCRIPTION/DISCIPLINES:**  
**DISCIPLINES:** Architectural/Structural;  
 Civil (Environmental); Civil (General  
 Municipal); Civil (Geotechnical); Civil  
 (Structural); Civil (Transportation);  
 Cogeneration; Communications;  
 Electrical; Energy; Hydrogeology;  
 Hydrology; Industrial; Mechanical;  
 Planning; Surveying; Water

**Stewart**

223 S. West St  
 Suite 1100  
 Raleigh, NC 27603  
 TEL: (919) 380-8750  
 EMAIL: dtaylor@stewartinc.com

URL: stewartinc.com  
 EMPS: 210  
 Primary Contact: Doug Taylor  
 dtaylor@stewartinc.com

**DESCRIPTION/DISCIPLINES:** Project  
 Feasibility Studies/Economic/Water  
 Conservation; Expert Testimony;  
 Computer/Software Technology; Public  
 Outreach/Involvement; Foundations;  
 Buildings; Stadiums; Tunnels; Bridges;  
 Geometrics, ALTA, Land Title and Rights

**DISCIPLINES:** Surveys; Control,  
 GPS, Monitoring or Construction  
 Surveying; Surveying Mapping, GIS/  
 LIS Photogrammetry; Noise; Waste  
 Pond Management; Stormwater  
 Management; Wastewater Collection/  
 Treatment and Disposal; Erosion  
 Control; Hydraulics, Hydrology;  
 Highways; Intermodal Facilities;  
 Land Development; Recreational  
 Facilities; Program and Construction  
 Management; Subsurface Engineering

**BRANCHES**

**RALEIGH**  
 223 S. West Street,  
 Suite 1100  
 Raleigh, NC 27603  
 919-380-8750 Phone  
 919-380-8752 Fax

**RALEIGH GEOTECH/CMT LAB**  
 5400 Old Poole Road  
 Raleigh, NC 27610  
 919-380-8750 Phone  
 919-380-8752 Fax

**RALEIGH GEOMATICS**  
 5410 Old Poole Road  
 Raleigh, NC 27610  
 919-380-8750 Phone  
 919-380-8752 Fax

**CHARLOTTE**  
 101 N. Tryon St., Suite 1400  
 Charlotte, NC 28202  
 704-334-7925 Phone  
 704-334-7926 Fax

**CHARLOTTE GEOTECH/CMT LAB**  
 9801-E Southern Pine Blvd Charlotte,  
 NC 28273  
 704-334-7925 Phone  
 704-334-7926 Fax

**DURHAM**

101 West Main St. Durham, NC 27701  
 919-380-8750 Phone

**Stoltzfus Engineering, Inc.**

683 Gralin Street  
 Kernersville, NC 27284  
 TEL: (336) 904-0207  
 EMAIL: info@seiengineering.com  
 URL: seiengineering.com  
 EMPS: 8  
 Primary Contact: Aden Stoltzfus  
 aden@seiengineering.com

**DESCRIPTION/DISCIPLINES:** Civil  
 Engineering Consultants

**STV Engineers, Inc.**

900 West Trade St, Suite 715  
 Charlotte, NC 28202  
 TEL: (704) 372-1885  
 EMAIL: stuart.matthis@stvinc.com  
 URL: stvinc.com  
 EMPS: 111  
 Primary Contact: Stuart Matthis  
 stuart.matthis@stvinc.com

**DESCRIPTION/DISCIPLINES:**  
 Architectural/Structural; Civil  
 (Environmental); Civil (General  
 Municipal); Civil (Geotechnical); Civil  
 (Structural); Civil (Transportation);  
 Computer Applications; Construction  
 Management; Hydrogeology; Hydrology;  
 Materials Handling; Planning; Energy;  
 Water; Other

**BRANCH**

**MORRISVILLE**  
 1600 Perimeter Park Drive, Suite 225  
 Morrisville, NC 27560  
 (919) 238-6674

**Summer Consultants**

4325 Lake Boone Trail  
Suite 301  
Raleigh, NC 27607  
TEL: (984) 204-4500  
EMAIL: pointer@summerconsultants.com  
URL: summerconsultants.com  
EMPS: 5  
Primary Contact: Robert Pointer  
pointer@summerconsultants.com

DESCRIPTION/DISCIPLINES: Building and Technology Systems

**Summit Design and Engineering Services, PLLC**

320 Executive Court  
Hillsborough, NC 27278  
TEL: (919) 732-3883  
EMAIL: james.parker@summitde.net  
URL: summitde.net  
EMPS: 283  
Primary Contact: James Parker  
james.parker@summitde.net

DESCRIPTION/DISCIPLINES: DISCIPLINES: Architectural/Structural; Civil (General Municipal); Civil (Transportation); Construction Management; Hydrology; Materials Handling; Planning; Surveying; Water

**Sungate Design Group, P.A.**

905 Jones Franklin Road  
Raleigh, NC 27606  
TEL: (919) 859-2243  
EMAIL: jdalton@sungatedesign.com  
URL: sungatedesign.com  
EMPS: 11  
Primary Contact: Joshua Dalton  
jdalton@sungatedesign.com

DESCRIPTION/DISCIPLINES: Studies, Research, and Consulting Engineering Services: Project Feasibility Studies/Economic; Water Conservation; Expert Testimony; Value Engineering. Surveying and Mapping Technology: Control, GPS, Monitoring or Construction Surveying. Environmental: Mitigation, Restoration/Reclamation/Remediation; Water Resources; Transportation: Highway, Public Transit. Land Development, Recreational Facilities. Small Projects

**SWCA Environmental Consulting and Engineering, Inc.**

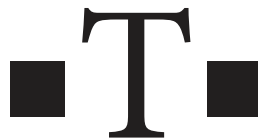
Associate (Non Lic.)  
201 Chatham Street, #3  
Sanford, NC 27330  
TEL: (919) 630-4099  
EMAIL: chad.evenhouse@swca.com  
URL: swca.com  
EMPS: 8  
Primary Contact: Mark Mickley  
Mark.Mickley@swca.com

DESCRIPTION/DISCIPLINES: Our 100% employee-owned firm offers comprehensive environmental planning, regulatory compliance, and natural and cultural resources management consulting services.

**SynTerra**

511 Keisler Drive, Suite 102  
Cary, NC 27518  
TEL: (919) 858-9898  
URL: https:synterracorp.com  
EMPS: 40  
Primary Contact: Josh Fowler  
jfowler@synterracorp.com

DESCRIPTION/DISCIPLINES: SynTerra is a professional services firm focused on environmental assessment & remediation, EHS Compliance, brownfields redevelopment, and Industrial Hygiene



**T.Y. Lin International**

5285 Shawnee Road  
Suite 210  
Alexandria, VA 22312  
TEL: (415) 291-3700  
EMAIL: james.gregg@tylin.com  
URL: tylin.com  
EMPS: 6  
Primary Contact: James Gregg  
james.gregg@tylin.com

DESCRIPTION/DISCIPLINES: T.Y. Lin International (TYLI) is a full-service, professional engineering firm

focused on the planning, design, and construction of infrastructure solutions for public and private clients worldwide.

**T2 Utility Engineers, Inc.**

Associate (Non Lic.)  
6611 Bay Circle  
Ste 220  
Norcross, GA 30071  
TEL: (678) 421-0080  
EMAIL: tony.dimarino@t2ue.com  
URL: t2ue.com  
EMPS: 1

Primary Contact: Tony DiMarino  
tony.dimarino@t2ue.com

DESCRIPTION/DISCIPLINES: T2 UES, Inc. provides a full range of professional engineering (SUE) advance geophysics, surveying and utility coordination to support infrastructure projects in the United States and Canada.

**TAE, Inc.**

4917 Professional Court,  
Ste. 105  
Raleigh, NC 27609  
TEL: (919) 871-0744  
EMAIL: mike.talley@taeinc.net  
URL: taeinc.us  
EMPS: 8  
Primary Contact: Michael Talley  
mike.talley@taeinc.net

DESCRIPTION/DISCIPLINES: Architectural/Structural; Communications; Industrial; Materials Handling; Other

**Taylor, Wiseman & Taylor**

2043 Energy Dr.  
Apex, NC 27502  
TEL: (919) 297-0085  
EMAIL: rash@taylorwiseman.com  
URL: taylorwiseman.com  
EMPS: 35

Primary Contact: Fred Rash  
rash@taylorwiseman.com

DESCRIPTION/DISCIPLINES: Civil (Environmental); Civil (Transportation); Surveying

**Teeter Engineering Group, PA**

5500 77 Center Drive  
Suite 140  
Charlotte, NC 28217  
TEL: (704) 376-2999  
EMAIL: bethc@tegpa.com  
URL: tegpa.com  
EMPS: 12  
Primary Contact: Beth Casey  
Bethc@tegpa.com

DESCRIPTION/DISCIPLINES: Electrical;  
Energy; Mechanical; Water

**Telics**

Associate (Non Lic.)  
2540 Mill Street  
Winterville, NC 28590  
TEL: (704) 575-7011  
EMAIL: stevenichols0396@gmail.com  
URL: telics.com  
EMPS: 25  
Primary Contact: Steve Nichols  
stevenichols0396@gmail.com

**Terracon Consultants, Inc.**

2401 Brentwood Road,  
Ste. 107  
Raleigh, NC 27604  
TEL: (919) 873-2211  
EMAIL: aaron.layne@terracon.com  
URL: terracon.com  
EMPS: 141  
Primary Contact: Aaron Layne  
aclayne@terracon.com

DESCRIPTION/DISCIPLINES: Studies,  
Research, and Consulting Engineering  
Services: Expert Testimony, Value  
Engineering. Building/Technology  
Systems: Efficiency Certification  
Standards, e. g. LEED; Energy Efficiency  
- New and Retrofit. Structural Systems:  
Foundations, Buildings, Towers,  
Stadiums, Tunnels, Seismic Design,  
Bridges. Environmental: Hazardous  
Waste, Noise, Mitigation, Restoration/  
Reclamation/Remediation, Air Quality.  
Water and Stormwater: Erosion Control;  
Water Resources: Hydraulics, Hydrology,  
Treatment; Locks/Dams/Water Control  
Structures. Transportation: Highways,  
Basic Research and Studies,

Public Transit, Airports, Marine/Ports,  
Intermodal Facilities.

**BRANCHES**

Raleigh  
Aaron Layne  
aaron.layne@terracon.com

Charlotte  
Mike Schrum  
mike.schrum@terracon.com  
Greensboro - facilities  
Jim Hoskins  
jim.hoskins@terracon.com  
Greensboro - testing  
Jim Hoskins  
jim.hoskins@terracon.com

Greenville  
Carl Bonner  
carl.bonner@terracon.com

**TGS Engineers**

706 Hillsborough Street  
Suite 200  
Raleigh, NC 27603  
TEL: (919) 773-8887  
EMAIL: nclemons@tgsengineers.com  
URL: tgsengineers.com  
EMPS: 103  
Primary Contact: Allen Raynor  
araynor@tgsengineers.com

DESCRIPTION/DISCIPLINES: Civil  
(General Municipal); Civil (Structural);  
Civil (Transportation); Construction  
Management; Hydrology; Planning;  
Surveying; Water; Row; Utility; Traffic  
Management, Other

**THC Inc.**

Affiliate/Supplier  
8514 McAlpine Park Drive,  
Suite 295  
Charlotte, NC 28211  
TEL: 704-568-9990 x202  
EMAIL: nburleson@thcinc.net  
URL: thcinc.net  
EMPS: 50  
Primary Contact: Neil Burleson  
nburleson@thcinc.net

DESCRIPTION/DISCIPLINES: THC,  
Inc. is a NCDOT prequalified program  
management firm providing right of way  
land acquisition and relocation services  
to deliver a win-win outcome for both  
the property owner and client; Right of  
Way Land Acquisition and Relocation  
Services; Noise Mitigation

**Theorem Geo Associates  
Engineering, PLLC**

5550 77-Center Dr.,  
Suite 320  
Charlotte, NC 28217  
TEL: (704) 325-2855  
EMAIL: salestgae@theoremgeo.com  
URL: theoremgeoengineering.com  
EMPS: 2  
Primary Contact: Brian Couture  
bcouture@theoremgeo.com

DESCRIPTION/DISCIPLINES: Disciplines:  
Energy, Studies, Research, and  
Consulting Engineering Services, and  
Surveying and mapping

**Thigpen Engineering & Consulting,  
PLLC**

3612 Griffice Mill Road  
Raleigh, NC 27610  
TEL: (704) 223-0682  
EMAIL:  
mthigpen@thigpenengineering.com  
URL: thigpenengineering.com  
EMPS: 1  
Primary Contact: Matthew Thigpen  
mthigpen@thigpenengineering.com

DESCRIPTION/DISCIPLINES: Certified  
Small Professional Services Firm  
offering transportation design services  
in Work Zone Traffic Control plan  
preparation, Pavement Marking Design,  
Signing Design, and Signal Design.

**Thinc Strategy, Inc.**

Affiliate/Supplier  
1017 Ashes Dr. Suite 204  
Wilmington, NC 28405  
TEL: (910) 769-3397  
EMAIL:  
cindy.anderson@thincstrategy.com  
URL: thincstrategy.com

Primary Contact: Cindy Anderson  
cindy.anderson@thincstrategy.com

DESCRIPTION/DISCIPLINES: Ownership  
Transition, Strategy & Consulting,  
Management Development

**Thompson Engineering Inc.**

555 Fayetteville Street  
Suite 201  
Raleigh, NC 27601  
TEL: (919) 719-3490  
URL: thompsonengineering.com  
EMPS: 1

Primary Contact: Dr. Mohammed Mulla  
mmulla@thompsonengineering.com

DESCRIPTION/DISCIPLINES: Thompson  
Engineering was established in 1953  
in Mobile, Alabama. Since then,  
the company has grown throughout  
the Southeast States providing  
Transportation Infrastructure and many  
other services.

**Three Oaks Engineering**

324 Blackwell Street,  
Suite 1200  
Durham, NC 27701  
TEL: (919) 732-1300  
EMAIL: suzanne.young@  
threeoaksengineering.com  
URL: threeoaksengineering.com  
EMPS: 27

Primary Contact: Suzanne Unger Young  
suzanne.young@threeoaksengineering.com

DESCRIPTION/DISCIPLINES: Civil  
(Environmental); Civil (Transportation);  
Hydrology; Planning, Traffic

**Traffic Planning and Design, Inc.**

80 Charlotte Street  
Suite 40  
Asheville, NC 28801  
TEL: (828) 575-0133  
EMAIL: cstaudt@trafficpd.com  
URL: trafficpd.com  
EMPS: 5

Primary Contact: Christy Staudt  
cstaudt@trafficpd.com

DESCRIPTION/DISCIPLINES: TPD is a  
transportation engineering firm serving

the eastern US. We provide sustainable  
engineering solutions for our clients and  
teaming partners.

**TRC Engineers**

5540 Centerview Drive  
Raleigh, NC 27606  
TEL: (919) 828-3150  
EMAIL: rboyd@trccompanies.com  
URL: trccompanies.com  
EMPS: 5  
Primary Contact: Richard Boyd  
rboyd@trccompanies.com

DESCRIPTION/DISCIPLINES: Civil  
(Environmental); Civil (General  
Municipal); Civil (Geotechnical); Civil  
(Structural); Civil (Transportation);  
Construction Management; Materials  
Handling

**Trimat Materials Testing**

Associate (Non Lic.)  
1 Triangle Drive, Ste. 200  
Durham, NC 27709  
TEL: (919) 532-2211  
EMAIL: cbacchi@trimattesting.com  
URL: trimattesting.com  
EMPS: 15  
Primary Contact: Christopher Bacchi  
cbacchi@trimattesting.com

DESCRIPTION/DISCIPLINES:  
Construction materials testing  
and inspection, CEI, lab services,  
consultation

**Tyndall Engineering & Design, PA**

250 Shipwash Drive,  
Suite 104  
Garner, NC 27529  
TEL: (919) 773-1200  
EMAIL: tyndall@tyndallengineering.com  
URL: tyndallengineering.com  
EMPS: 14  
Primary Contact: Prentice Tyndall  
ptyndall2@tyndallengineering.com

DESCRIPTION/DISCIPLINES:  
Architectural/Structural; Other



**UMA Geotechnical Construction**

8815 Neville Road  
Colfax, NC 27235  
TEL: (336) 992-0746  
EMAIL:  
sbyrd@team-uma.com  
URL: team-uma.com  
EMPS: 60

Primary Contact: Maxine Blades  
mblades@team-uma.com

DESCRIPTION/DISCIPLINES: Chemical  
Grouting ; Concrete Lifting; Soil  
Stabilization; Infrastructure Repair;  
Compaction Grouting; Concrete Slab  
Leveling; Lightweight Fills; Micropiles;  
Helical Piers; Underpinning Services;  
Limited Access Drilling; Soil Nailing;  
Mechanical Anchors; Rock Anchors;  
Slope Stabilization; Geotechnical  
Engineering

**United Consulting Group, Ltd.  
(dba United Consulting)**

625 Holcomb Bridge Rd.  
Norcross, Georgia 30071  
TEL: (770) 209-0029  
EMAIL: jkelava@unitedconsulting.com  
URL: unitedconsulting.com  
EMPS: 1

Primary Contact:  
Mahalingam Bahiradhan  
mbahiradhan@unitedconsulting.com

DESCRIPTION/DISCIPLINES: United  
Consulting is an engineering consulting  
firm based in GA specializing in  
environmental and geophysical  
services, geotechnical engineering,  
special inspections, and CMT.

**Urban Design Partners PLLC**

1213 West Moreland St  
Suite 450  
Charlotte, NC 28208  
TEL: (704) 334-3303  
EMAIL: brian@urbandesignpartners.com

URL: [urbandesignpartners.com](http://urbandesignpartners.com)  
EMPS: 21  
Primary Contact: Brian Smith  
[brian@urbandesignpartners.com](mailto:brian@urbandesignpartners.com)

DESCRIPTION/DISCIPLINES: Other, Civil  
(Land Development)

**Utility Coordination Consultants, LLC**

Associate (Non Lic.)  
137 Indian Trail Rd  
Indian Trail, , NC 28079  
TEL: (704) 844-9093  
EMAIL: [mprice@utilitycoor.com](mailto:mprice@utilitycoor.com)  
URL: [utilitycoor.com](http://utilitycoor.com)  
EMPS: 6  
Primary Contact: Mark Price  
[mprice@utilitycoor.com](mailto:mprice@utilitycoor.com)

DESCRIPTION/DISCIPLINES:  
Coordinates the relocations of utilities that are in conflict with new roadway construction.

**UtilityInnovation Group, LLC**

2308 Wakefield Plantation Dr  
Raleigh, NC 27614  
TEL: (919) 500-2558  
EMAIL: [dtaylor@utilityengineering.com](mailto:dtaylor@utilityengineering.com)  
URL: [utilityengineering.com](http://utilityengineering.com)  
EMPS: 11  
Primary Contact: David Taylor  
[dtaylor@utilityengineering.com](mailto:dtaylor@utilityengineering.com)

DESCRIPTION/DISCIPLINES:  
UtilityEngineering is a full-service engineering consulting firm that has been built with comprehensive electrical and civil engineering experience to plan, design, procure, and construct distributed



**Vaughn & Melton Consulting Engineers, Inc.**

1318-F Patton Avenue  
Asheville, NC 28806  
TEL: (828) 253-2796  
EMAIL: [ldbrown@vaughnmelton.com](mailto:ldbrown@vaughnmelton.com)  
URL: [vaughnmelton.com](http://vaughnmelton.com)  
EMPS: 170  
Primary Contact: DeWayne Brown  
[ldbrown@vaughnmelton.com](mailto:ldbrown@vaughnmelton.com)

DESCRIPTION/DISCIPLINES: Structural; Civil (Environmental); Civil (General Municipal); Civil (Structural); Civil (Transportation); Construction Management; Hydrogeology; Hydrology; Industrial; Materials Handling; Mining; Planning; Surveying; S.U.E.; Water Resources; Utility Services, Right-of-Way Acquisition; Other

**Vericom Group LLC**

Affiliate/Supplier  
312 W Millbrook Road  
Suite 233  
Raleigh, NC 27609  
TEL: (919) 845-8800  
EMAIL: [gblake@vericomgroup.com](mailto:gblake@vericomgroup.com)  
URL: [vericomgroup.com](http://vericomgroup.com)  
Primary Contact: G. Blake Phillips  
[gblake@vericomgroup.com](mailto:gblake@vericomgroup.com)

DESCRIPTION/DISCIPLINES: We help businesses gain visibility and control over their telecom, utility, cable TV, and IT services while improving services and decreasing costs. We turn dozens or hundreds of monthly bills into one

**VHB Engineering, NC, P.C.**

940 Main Campus Drive,  
Ste 500  
Raleigh, NC 27606  
TEL: (919) 829-0328  
EMAIL: [jfleming@vhb.com](mailto:jfleming@vhb.com)  
URL: [vhb.com](http://vhb.com)

EMPS: 121

Primary Contact: Reginald Scales  
[rscales@vhb.com](mailto:rscales@vhb.com)

DESCRIPTION/DISCIPLINES: Civil (Environmental); Civil (General Municipal); Civil (Structural); Civil (Transportation); Energy, Hydrology; Planning; Water

**Visible Value**

Affiliate/Supplier  
338 Belrose Dr  
Cary, NC 27513  
TEL: (919) 533-2444  
EMAIL: [cstorrusten@visiblevalue.net](mailto:cstorrusten@visiblevalue.net)  
URL: [visiblevalue.net](http://visiblevalue.net)  
EMPS: 2  
Primary Contact: Chandra Storrusten  
[cstorrusten@visiblevalue.net](mailto:cstorrusten@visiblevalue.net)

DESCRIPTION/DISCIPLINES: We foster sustainable value creation strategies that allow professional services firms around the globe to capitalize on pivotal opportunities during growth, transitions, and transformations.

**VN Engineers, Inc.**

1053 E Whitaker Mill Rd, Suite 115  
Raleigh, North Carolina 27604  
TEL: (919) 813-0618  
EMAIL: [mkurker@vnengineers.com](mailto:mkurker@vnengineers.com)  
URL: [vnengineers.com](http://vnengineers.com)  
EMPS: 1  
Primary Contact: Michael Kurker  
[mkurker@vnengineers.com](mailto:mkurker@vnengineers.com)

DESCRIPTION/DISCIPLINES: VN Engineers, Inc. is a multi-disciplined civil engineering consulting firm which specializes in infrastructure, transportation, traffic, highway, planning, rail design and construction inspection.

**Volkert, Inc.**

5430 Wade Park Blvd.  
Suite 410  
Raleigh, NC 27607  
TEL: (919) 854-0344



EMAIL: amy.hood@volkert.com  
URL: volkert.com  
EMPS: 95  
Primary Contact: Lacy Love  
lacy.love@volkert.com

DESCRIPTION/DISCIPLINES: Civil (Structural); Civil (Transportation); Construction Management, Planning, Construction Engineering and Inspection, NBIS Bridge Inspection, Traffic Engineering, Load Rating



**Wantman Group, Inc**  
14045 Ballantyne Corporate Place,  
Ste 380  
Charlotte, NC 28277  
TEL: (704) 716-8000  
EMAIL: rebecca.chambers@wginc.com  
URL: wginc.com  
EMPS: 10  
Primary Contact: Eliza Partington  
eliza.partington@wginc.com

DESCRIPTION/DISCIPLINES: WGI (Wantman Group, Inc.) is a national design and professional services firm leading in technology-based solutions for the construction of public infrastructure and real estate development.

**Wetherill Engineering, Inc.**  
1223 Jones Franklin Road  
Raleigh, NC 27606  
TEL: (919) 851-8077  
EMAIL: dbw@wetherilleng.com  
URL: wetherilleng.com  
EMPS: 44  
Primary Contact: Debora Wetherill  
dbw@wetherilleng.com

DESCRIPTION/DISCIPLINES: Civil (General Municipal); Civil (Structural); Civil (Transportation); Construction Management; Hydrology; Planning; Surveying; Water; GIS, SUE

**Whitman, Requardt and Associates, LLP**

1201 Edwards Mill Road, Suite 320  
Raleigh, NC 27607  
TEL: (919) 859-0808  
EMAIL: dsaunders@wrallp.com  
URL: wrallp.com  
EMPS: 10  
Primary Contact: Melanie Hustead  
mhustead@wrallp.com

DESCRIPTION/DISCIPLINES: Established in 1915, WRA is a nationally recognized engineering, architectural, construction management and environmental firm.

**Wiley|Wilson**

5540 Centerview Drive - Suite 405  
Raleigh, NC 27606  
TEL: (919) 746-8369  
EMAIL: sbowman@wileywilson.com  
URL: wileywilson.com  
EMPS: 9

DESCRIPTION/DISCIPLINES: A full service A/E firm with the vision to create a built environment that is reliable, sustainable, safe, and secure.

**Willis Engineers**

10700 Sikes Place, Ste. 115  
Charlotte, NC 28277  
TEL: (704) 377-9844  
EMAIL: chuck@willisengineers.com  
URL: willisengineers.com  
EMPS: 10  
Primary Contact: Chuck Willis  
chuck@willisengineers.com

DESCRIPTION/DISCIPLINES: Master Planning for Wastewater; Master Planning for Water Systems; Pumping Stations; Sanitary Engineering; Sewage Collection, Treatment & Disposal; Wastewater Treatment; Water Supply, Treatment, Distribution

**Withersravenel, Inc.**

115 MacKenan Drive  
Cary, NC 27511  
TEL: (919) 469-3340  
EMAIL: twithers@withersravenel.com

URL: withersravenel.com  
EMPS: 309

DESCRIPTION/DISCIPLINES: Civil (Environmental); Civil (General Municipal); Civil (Transportation); Construction Management; Energy; Hazardous Waste; Hydrogeology; Hydrology; Industrial; Materials Handling; Planning; Surveying; Water; Other

**W.K. Dickson & Co., Inc.**

1213 W Morehead St  
Suite 300  
Charlotte, NC 28208  
TEL: (704) 334-5348  
EMAIL: kckern@wkdickson.com  
URL: wkdickson.com  
EMPS: 98  
Primary Contact: Kraig Kern  
kckern@wkdickson.com

DESCRIPTION/DISCIPLINES: Civil (Environmental); Civil (General Municipal); Civil (Transportation); Energy; Hydrogeology; Hydrology; Planning; Landscape Architecture; Surveying; Water; Other

**Wood Environment Infrastructure, Inc.**

4021 Stirrup Creek Drive,  
Ste. 100  
Durham, NC 27703  
TEL: (919) 381-9900  
EMAIL: bill.hood@woodplc.com  
URL: woodplc.com  
EMPS: 252  
Primary Contact: Bob Miller  
robert.miller2@woodplc.com

DESCRIPTION/DISCIPLINES: Civil (Environmental); Civil (General Municipal); Civil (Geotechnical); Civil (Structural); Civil (Transportation) Computer Applications; Construction Management; Energy; Hazardous Waste; Hydrology; Hydrogeology; Industrial; Materials Handling; Mechanical; Planning; Water; Other

**BRANCHES:**  
1308 Patton Avenue  
Asheville, NC  
Matthew.Wallace@amecfw.com

2801 Yorkmont Road  
Suite 100  
Charlotte, NC  
Andy.Clark@amecfw.com

5710 Oleander Drive  
Suite 110  
Wilmington, NC  
Chris.Pruneau@amecfw.com

**Woods Engineering, PA**

254 North Front Street,  
Suite 201  
Wilmington, NC 28401  
TEL: (910) 343-8007  
EMAIL: info@woodseng.com  
URL: woodseng.com  
EMPS: 9  
Primary Contact: Melissa Begue  
melissa@woodseng.com

**DESCRIPTION/DISCIPLINES:** Project Feasibility Studies/Economic/, Public Outreach/Involvement, Value Engineering, Efficiency Certification Standards, e.g. LEED, Foundations, Buildings, Towers, Stadiums, Seismic Design, Bridges, Airports, Marine/Ports, Safety and Security, Recreational Facilities, Manufacturing, Heavy Industry, Commercial, High-End Residential, Industrial, Hospitality, Schools, Apartments & Mixed Use

**Woolpert North Carolina, PLLC**

11301 Carmel Commons Blvd Ste 300  
Charlotte, NC 28226  
TEL: (704) 526-3058  
EMAIL: lashawn.mungo@woolpert.com  
URL: woolpert.com  
EMPS: 8  
Primary Contact: Lashawn Mungo  
Lashawn.Mungo@woolpert.com

**DESCRIPTION/DISCIPLINES:** Architectural/Structural; Civil (Environmental); Civil (General Municipal); Civil (Structural); Civil

(Transportation); Communications; Computer Applications; Construction Management; Electrical; Hydrogeology; Hydrology; Industrial; Mechanical; Planning; Surveying; Water;

**The Wooten Company**

120 N. Boylan Avenue  
Raleigh, NC 27603  
TEL: (919) 828-0531  
EMAIL: mreese@thewootencompany.com  
URL: thewootencompany.com  
EMPS: 78  
Primary Contact:  
Gary Hartong  
ghartong@thewootencompany.com

**DESCRIPTION/DISCIPLINES:** Architectural/Structural; Civil (Environmental); Civil (General Municipal); Civil (Site Development); Communications; Construction Management; Electrical; Energy; Hydrogeology; Hydrology; Industrial; Mechanical; Surveying; Water; Other

**BRANCHES**

**GREENVILLE**

301 West 14th St.  
Greenville, NC 27834  
Derrick Smith, PE  
dsmith@thewootencompany.com

**HICKORY**

1430 Old Lenoir Rd. NW  
Hickory, NC 28601  
Slade Harvin  
sharvin@thewootencompany.com

**WINSTON-SALEM**

300 South Main St.  
Winston-Salem, NC 29201  
John Grey, PE  
jgrey@thewootencompany.com

**COLUMBIA, SC**

1830 Marion St, Ste A  
Columbia, SC 29201  
John Grey, PE  
jgrey@thewootencompany.com

**WSE of North Carolina, PC**

598 E. Chatham Street  
Suite 137  
Cary, NC 27511  
TEL: (919) 297-0220  
EMAIL: trn@wseinc.com  
URL: westonandsampson.com  
EMPS: 30  
Primary Contact: Candace Coghill  
Coghill.Candace@wseinc.com

**DESCRIPTION/DISCIPLINES:** Weston & Sampson offers interdisciplinary design, engineering, and environmental services along the eastern seaboard with an office located in Cary, North Carolina.

**WSP**

434 Fayetteville Street  
Ste. 1500  
Raleigh, NC 27601  
TEL: (919) 836-4040  
EMAIL: Nancy.Ray@wsp.com  
URL: wsp.com  
EMPS: 253  
Primary Contact: Will Letchworth  
Will.Letchworth@wsp.com

**DESCRIPTION/DISCIPLINES:** Acoustical; Architectural/Structural; Civil (Environmental, General Municipal, Geotechnical, Structural, Transportation); Cogeneration; Communications; Construction Management; Electrical; Energy; Hydrogeology; Hydrology; Mechanical; Planning; Water


**BRANCHES:**

**WSP USA**

1001 Morehead Square Drive, Suite 610  
Charlotte, NC 28203  
Contact: Will Letchworth

**WSP USA**

128 Talbert Road Suite A  
Mooresville, NC 28117  
Contact: Will Letchworth



**WSP USA**  
**1425 Rock Quarry Rd.**  
**Suite 115**  
**Raleigh, NC 27610**  
**Contact: Will Letchworth**

# ACEC/NC Committees & Forums

## Buildings & Infrastructure

Focusing on all aspects of vertical development projects and their respective sites, this committee serves as liaison between ACEC/NC and multiple owner types and related agencies (including but not limited to higher education institutions, NC Office of State Construction, municipalities, K-12 school districts, healthcare institutions and private industry) and monitors their activities in project planning, design, construction, budgeting and selection of design firms. Focus areas include building construction, site and infrastructure development, code compliance, sustainability and energy conservation.

This committee also focuses on economic development activity that affects projects and member firms, with the goal to develop a mutually beneficial relationship between ACEC/NC and economic development organizations such as the North Carolina Economic Developers Association (NCEDA) and raise the visibility and profile of member firms within the economic development community.

### Board Liaison: Mike Slusher

Davis-Martin-Powell & Associates, Inc.  
6415 Old Plank Road  
High Point, NC 27265  
(336) 886-4821  
mslusher@dmp-inc.com

### Chair: Alison Koss

KCI Associates, of NC, PA  
4505 Falls of Neuse Road  
Suite 400  
Raleigh, NC 27609  
(919) 783-9214  
Alison.Koss@kci.com

### Vice-Chair: Pete Nilsen

Aerial Analytics LLC  
7151 O'Kelley Chapel Rd.  
Cary, NC 27519  
(919) 417-2343  
pnilsen@aerial-analytics.com

## Business Practices Committee

Small and Large Business Leaders interested in improving the efficiency and operation of member firms are members of this committee. The objective of this committee is to reach out to and expand opportunities for business members of ACEC/NC, protect the interests of engineering firms, and offer business leaders a chance to leverage the collective knowledge of a larger group, to improve overall performance related to human resources, financial, legal, business development, and operations.

### Board Liaison: Liz Phipps

KCI Associates of NC, Inc.  
4601 Six Forks Rd, Ste 220  
Landmark Center 1  
Raleigh, NC 27609  
(919) 783-9214  
liz.phipps@kci.com

### Chair: Justine D'Andrea

Summit Design and Engineering Services,  
PLLC  
300 Executive Court  
Hillsborough, NC 27278  
(919) 732-3883  
justine.dandrea@summitde.net

### Vice-Chair: Craig Hyman

KCI Associates, of NC, PA  
4505 Falls of Neuse Road  
Suite 400  
Raleigh, NC 27609  
(919) 783-9214  
Craig.Hyman@kci.com

## Environmental/Energy Committee (Joint with PENC)

This committee interacts with various departments and agencies of the State who are involved in environmental activities. Members interact with agency representatives to help improve relationships and assist in promoting environmental policies that benefit both member firms and State agencies. The committee also monitors and develops an information program on energy/power and private industrial issues. This mirrors a national goal of serving this industry segment and providing value to private and utility sector firms. It will also promote recruitment of these firms to membership in ACEC/NC.

### Board Liaison: Matt Fogleman

ECS Southeast, LLP  
1900 Hendersonville Rd. #10  
Asheville, NC 28803  
(828) 665-2307  
mfogleman@ecslimited.com

### ACEC/NC Co-Chair:

**Chris Windley**  
CJS Conveyance, PLLC  
320 S. Academy Street  
Cary, NC 27511  
(919) 890-3876  
cwindley@cjsconveyance.com

### PENC Co-Chair: Leah Young

KCI Associates, of NC, PA  
4505 Falls of Neuse Road  
Suite 400  
Raleigh, NC 27609  
(919) 783-9214  
leah.young@kci.com

# ACEC/NC Committees & Forums

## Future Leaders Program

This program seeks to provide young professionals with the broad-based, in-depth industry knowledge they will need in order to rise into leadership positions within ACEC/NC member firms. Future Leaders are nominated annually for this program.

### Board Liaison: Mike Holder

Gannett Fleming, Inc.  
2610 Wycliff Road, Suite 102  
Raleigh, NC 27607  
(919) 420-7660  
mholder@gfnet.com

### Co-Chair: Jessica McClure

Ramey Kemp Associates, Inc.  
5808 Faringdon Place, Ste. 100  
Raleigh, NC 27609  
(919) 872-5115  
Jmclure@rameykemp.com

## Legislative Committee

This committee monitors State and National legislation that may impact the engineering industry. The committee compiles the Council's legislative agenda for approval by the Board of Directors and assists in the lobbying efforts to support that agenda. The committee also promotes and organizes events that focus on furthering the Council's legislative agenda, and supporting our State and National Political Action Committees.

### Board Liaison: Iona Thomas

McAdams Company  
2905 Meridian Parkway  
Durham, NC 27713  
(919) 361-5000  
thomas@mcadamsco.com

### Chair: Brock Storrusten

WithersRavenel, Inc.  
111 MacKenan Drive  
Cary, NC 27511  
(919) 469-3340  
bstorrusten@withersravenel.com

### Vice-Chair: John Weavil

S&ME, Inc.  
9751 Southern Pine Blvd.  
Charlotte, NC 28273  
(704) 523-4726  
jweavil@smeinc.com

### Vice Chair: Patrick Waterman

LaBella Associates  
400 South Tryon St., Ste. 1300  
Charlotte, NC 28285  
(585) 770-2519  
PWaterman@LaBellaPC.com

## Executive Leaders Forum

This forum serves as a platform for our member firms' senior leadership to meet and exchange ideas on bettering our business practices with public and private sector clients. In addition, this forum will allow senior members to identify issues that the Board of ACEC/NC should consider focusing on and suggesting action items related to the political process that could be important to the long-term viability of the private engineering industry. Please note that this forum is mindful of anti-collusion requirements and will not discuss those items that could be construed as collusion.

### Board Liaison: Stephen Greene

Ramey Kemp Associates, Inc.  
5808 Faringdon Place, Ste. 100  
Raleigh, NC 27609  
(919) 872-5115  
Sgreene@rameykemp.com

### Chair: Valoree Eikinas

NV5  
6750 Tryon Road  
Cary, NC 27518  
(919) 836-4800  
Valoree.Eikinas@nv5.com

### Vice-Chair: Spencer Franklin (RAL)

HTNB North Carolina, PC  
343 Six Forks Rd., Ste. 200  
Raleigh, NC 27609  
(919) 546-8997  
sfranklin@htnb.com

### Vice-Chair: Radha Krishna Swayampakala (CLT)

RS&H  
1520 South Blvd., Ste. 200  
Charlotte, NC 28203  
(704) 940-4788  
radhkrishna.swayampakala@rsandh.com

## Transportation Committee

This committee serves as a liaison between ACEC/NC and the North Carolina Department of Transportation and other public agencies dealing with all areas of transportation including highways, railways, airports, waterways, mass transit, and other forms of public transportation.

### Board Liaison: Will Letchworth

WSP  
434 Fayetteville Street, Suite 1500  
Raleigh, NC 27601  
(919) 678-0035  
Will.Letchworth@wsp.com

### Chair: Davis Diggs

KCA.  
PNC Plaza  
301 Fayetteville Street, Suite 1500  
Raleigh, NC 27601  
(919) 882-7839  
DDiggs@kcaeng.com

### Vice-Chair: Allen Pope

Colliers Engineering & Design  
2000 Regency Pkwy, Ste 295  
Cary, NC 27518  
(919) 439-6082  
allen.pope@colliersengineering.com

### Vice-Chair: Greg Purvis

Wetherill Engineering, Inc  
559 Jones Franklin Rd., Ste 164  
Raleigh, NC 27606  
(919) 851-8077  
gpurvis@wetherilleng.com



**Qualifications-Based  
Selection of Design Professionals  
in North Carolina**

# Qualifications-Based Selection

## What is Qualifications-Based Selection?

Qualifications-Based Selection (QBS) is a process for the selection of design professionals by public and private owners. It is a negotiated procurement process for selection based on qualifications and competence in relation to the work to be performed.

- It fosters broad-based competition.
- It affords the selection professional an opportunity to understand the owner's needs and objectives as a basis for negotiating the professional fee.
- It saves money over bid-based methods, as proven in actual practice by public and private owners.
- It takes full advantage of creativity and expertise of the design professional.

## What Precedents Exist for Qualifications-Based Selection?

- It has been in use since the Civil War.
- Public Law 92-582 (Brooks Bill) confirms it is in the nation's best interest in federal procurement on civilian agency projects.
- Public Law 100-464 reaffirms 92-582 and adds specific services covered by the law.
- North Carolina General Statutes 143-64.31,.32,.33 clearly states it is public policy to use the QBS process.
- The American Bar Association's Model Procurement Code for State and Local Governments specifies it as the preferred method of procuring design professional services.

- The American Public Works Association endorses it in a strongly worded policy statement.
- Experience. Maryland adopted price-based selection in 1974, which in 1985 was overwhelmingly replaced with Qualifications-Based Selection type procurement method because of its efficiency and benefits to the state. Maryland's research and experience clearly showed that meaningful price-based comparisons are quite difficult to make at the time the selection is made. Price-based selection increased the design phase cost by 94% and resulted in major construction cost increases. The cost increase resulted from the time and effort it took Maryland to prepare a scope of work that could be used to obtain bids from design professionals.

## Why Would an Owner Want to Use Qualifications Based Selection?

Because:

- High quality consultant services are only a small percentage of the project cost, yet affect and influence the entire project cost and outcome.
- It promotes improved project quality by assuring that the client clearly understands the scope of work required.
- It leads to realistic construction bids based upon a definitive scope of work.
- Studies have shown that use of Qualifications-Based Selection for projects is more efficient and less costly than use of a selection process that uses price as a primary criterion.
- Qualifications-Based Selection avoids the situation where the greatest benefit of the design professional's innovation and creativity is lost because its importance was not recognized at the fee proposal stage.

## What about Price-Based Selection?

An RFP that requests fee proposals requires the design professional to determine the lowest fee at which the tasks for the project can be accomplished. A fee proposal can only be as precise and accurate as the owner's statement of the scope of work. For some projects it may be possible to state in advance a comprehensive scope of work on which proposals can be based, but many projects are complex, often more so than they first appear.

Ordinarily, an owner must define the scope of work desired. This is often a difficult and time-consuming task and is best accomplished jointly with the highest rated firm as determined by QBS evaluation; where the owner takes advantage of multi-discipline experience and knowledge to properly define the scope of services.

## Do Owners Have to Use Qualifications-Based Selection?

NO. Owners have the right to choose any selection process they wish.

Likewise, the design professional has freedom of choice as to participation. For example:

### Situation #1

- You have an existing relationship with a design professional.
- Your needs are met, and the firm you are working with has the qualifications needed for the new project.

The recommended method for you is to continue the current relationship by jointly developing the new project scope, contract form and fee.

# Qualifications-Based Selection

## Situation #2

- You do not have a relationship with a design professional.
- You have a project requiring the attention of a competent technical professional.

The recommended method for you is to use Qualifications-Based Selection.

## Situation #3

- You may or may not have an existing relationship with a design professional.
- You have to (or want to) go through a competitive selection process.

The recommended method for you is to use Qualification Based Selection.

(A simplified example of the Qualifications-Based Selection Process follows this section.)

## QBS and the Rules of Professional Conduct

Effective August 1, 2002 the N.C. Board of Examiners for Engineers and Surveyors added the following to its Rules of Professional Conduct:

21-56.0701(f)3. The licensee shall solicit or accept work only on the basis of qualifications and... (3) shall, with regard to fee bidding on public projects, comply with the provisions of G.S. 143-64.31, and shall not knowingly cooperate in a violation of any provision of G.S.

143-64.31.

The following Questions were asked during an ACEC/NC Special

Conference, in January 2001, on the proper application of the Board's new requirement under the Rules of Professional Conduct pertaining to G.S. 143-64-31 (Mini-Brooks Act). The answers shown represent the official position of the North Carolina Board

of Examiners. Both the Questions and the answers apply equally to the Engineering and Surveying professions.

**Question:** Is a two envelope system, where qualifications are placed in one envelope and price is placed in the second envelope with an assurance from the public body that the price will not be opened until the selection has been made based upon qualifications, acceptable under the provisions of the Mini-Brooks Act?

**Answer:** No. A project price may not be provided until a firm has been selected based upon a qualification based process. Once selected, the firm can then negotiate a project price with the public body.

**Question:** Are all licensees obligated to report known violations of board rules?

**Answer:** Yes. All licensees are obligated to report known violations of board rules under the requirements of the Rules of Professional Conduct. This would include reporting Professional Engineers or firms that submit prices in response to request for proposals for publicly funded projects that have not been exempted under the provision the Mini-Brooks Act.

**Question:** What about the delivery of unit prices for the project?

**Answer:** The delivery of unit prices as a response to a request for proposals identifies relative information with respect to general fees and is not specific to tasks related to the project. The submission of any information, which can be easily correlated to a fixed price or a bid, is prohibited unless the project has been exempted.

**Question:** If the proposed fee is less than \$50, 000.00, is an exemption still required?

**Answer:** Yes. All exemptions must be in writing and are required on a project by project basis.

**Question:** What is an appropriate way to respond to a request for a price?

**Answer:** Currently, the American Council of Engineering Companies of North Carolina has developed a process to contact the party who is requesting the price. This contact includes detailed information regarding the Mini-Brooks Act and the obligation by the licensee not to submit a price.

**Question:** Will the Board of Examiners respond to a specific request for clarification of rule?

**Answer:** Yes. The Board of Examiners will respond to any request for clarification of responsibility concerning the proper application of the Mini-Brooks Act but the Board's jurisdiction is limited to licensees.

**Question:** If a resolution of exemption is obtained from the requesting entity, may the licensee submit a price?

**Answer:** Yes. The ability to exempt projects is provided to NCDOT and local units of government when the estimated cost is less than \$50,000.

**Question:** Are their exemptions for special conditions?

**Answer:** Yes. The Act provides for exceptions in the "cases of special emergency involving the health and safety of the people or their property."

**Question:** What does the effective date of the resolution need to be and must the resolution or exemption be project specific?

**Answer:** The resolution to exempt a project must be in force before a licensee may provide a project price. Each exemption must be project specific.

**Question:** How far does the responsibility of the engineer go as it relates to prime/sub-consultants (architectural type of contracting arrangement)?



# Qualifications-Based Selection

**Answer:** The Board of Examiners has ruled that the provisions of the Mini-Brooks apply even in situations of prime/subconsultants. If the project involves public funds from a project that has not been exempted, the sub-consultants must be selected through a qualification-based process. The North Carolina Attorney General has been asked to render an opinion on this issue.

**Question:** What about design/build and alternative delivery systems?

How should the licensee handle this issue?

**Answer:** Same as above.

**Question:** What is the licensee's responsibility as it relates to assure that the resolution of exemption is valid?

**Answer:** The licensee must exercise prudent judgment to determine that an exemption has been properly executed in writing for the specified project.

**Question:** What about multiple Phase contracts?

**Answer:** Unless specifically exempted, multiple phase contracts are subject to the requirements of the Mini-Brooks Act.

**Question:** There seems to some gray area in environmental work, such as wetlands delineation. Now with this new rule engineers cannot bid, but environmental professionals can. Is there some way that we can address this situation?

**Answer:** The Mini-Brooks Act only pertains to professional services listed as "...architectural, engineering or surveying services..." Professional Engineers and Firms may offer prices for projects that they are legally capable of providing,

i.e. geology, soil science, landscape architecture.

**Question:** Is it permissible to submit project prices for projects that have been exempted?

**Answer:** Yes. If the exemption is by a local unit of government or NCDOT and is in writing, it is permissible for licensees to submit total project prices.

**Question:** Is it a violation of the Rules of Professional Conduct for a licensee, placed in a responsible role for a public body, to request other professionals to provide a total project price on behalf of the owner?

**Answer:** Yes. All licensees of the Board are required to comply with the provisions of the Mini-Brooks Act.

**Question:** Has there been any consideration to Maryland's rescinding the price prohibition?

**Answer:** No. This is outside the Board's jurisdiction.

**Question:** Currently the State of North Carolina is required to request bids for construction and the contractor then typically hires sub-consultants through a bid process. Is it a violation for a licensee to provide a total project price under such circumstances?

**Answer:** Yes. The Mini-Brooks Act applies to all publicly funded projects and professional services must be selected based upon a qualification based process unless exempted under the provisions of the act. The North Carolina Attorney General has been requested to render an opinion on this issue.

**Question:** Paragraph F of Section 21-56.0701 is only applied/enforced relative to GS143-64.31.

Does this apply to public funds only?

**Answer:** The Mini-Brooks Act only pertains to public funds. The Board Rules do not prohibit licensee from offering total project prices for privately funded projects.

**Question:** What about primarily planning studies with engineering elements? Is this considered a violation?

**Answer:** This would be dictated by the nature of the services to be rendered for the specific project. If the services are professional in nature, the Mini-Brooks Act would apply.

**Question:** What about state agencies, are they covered by GS14364.31?

**Answer:** No exemptions are allowed for state agencies other than NCDOT.

**Question:** What about State Universities?

**Answer:** There was an exemption for capital improvement projects for The University of North Carolina, which expired on July 1, 2001

**Question:** Do other non-DOT agencies have the ability to exempt themselves on state directed projects?

**Answer:** There are no exceptions allowed for State agencies except for State Capital Improvement Projects where the total cost is less than \$100,000.00.

**Question:** What about exemptions for municipalities?

**Answer:** Local units of government or NCDOT may in writing exempt particular projects in the case of:

- (1) Proposed projects where an estimated professional fee is in an amount less than fifty thousand dollars (\$50,000), or
- (2) Other particular projects exempted in the sole discretion of the Department of Transportation stating the reasons therefore and the circumstances attendant thereto.

# Qualifications-Based Selection

**Question:** Is a non-license violation a criminal violation?

**Answer:** No. A violation of the MiniBrooks Act would be considered a civil violation.

**Question:** Does the rule apply to GIS?

**Answer:** Yes

**Question:** What is considered a fee bid?

**Answer:** The submission of any information that would allow the public entity to determine a total project fee would be considered a “fee bid.”

**Question:** Would an RFP that request man-hours without unit prices be considered a bid?

**Answer:** The Act only allows for “unit price information” and qualifications. Man-hours would not be considered a “unit price.”

**Question:** During a short list or interview type of arrangement, if the interviewing party requests a price, is the licensee free to give a price at that time?

**Answer:** No. Price should not be given until the consultant is selected as the most qualified to provide the services requested and negotiations may then begin to establish the fee.

**Question:** What about licensed city/state engineers, architects and surveyors, are they in violation if they send out RFP's requesting a price.

**Answer:** Yes. All licensees must comply with the requirements of the Mini-Brooks Act.

**Question:** Who must issue the written exemption?

**Answer:** The exemption can only be issued by the entity that is authorized to award the contract.

**Question:** What if a sub-consultant asks for a price and it is thought that there is a sole source selection being performed?

**Answer:** The licensee should make every effort to verify that the proposed project is a sole source selection, which should include confirmation in writing from the requesting entity.

**Question:** What if a client (public) asks for prices of recent projects, is this a violation?

**Answer:** Currently, government form 330 requires prices for similar types of previous work effort as a basis for qualifications. It is not a violation of the Mini Brooks Act to provide this form as a part of the QBS process for publicly funded projects.

# Qualifications-Based Selection

## **NORTH CAROLINA GENERAL STATUTES 143-**

### **64.31, .32, .33 and .34 (as amended)**

#### **§ 143-64.31. Declaration of public policy.**

It is the public policy of this State and all public subdivisions and Local Governmental Units thereof, except in cases of special emergency involving the health and safety

of the people or their property, to announce all requirements for architectural, engineering, and surveying services, to select firms qualified to provide such services on the basis of demonstrated competence and qualification for the type of professional services required without regard to fee other than unit price information at this stage, and thereafter to negotiate

a contract for architectural, engineering, or surveying services at a fair and reasonable fee with the best qualified firm. If a contract cannot be negotiated with the best qualified firm, negotiations with that firm shall be terminated and initiated with the next best qualified firm.

#### **Changes to A/E Procurement by HB 1043:**

SECTION 4. G.S. 143-64.31, as amended by Section 3 of this act, is amended to add a new subsection to read:

“(f) Except as provided in this subsection, no work product or design may be solicited,

submitted, or considered as part of the selection process under this Article; and no costs or fees, other than unit price information, may be solicited, submitted, or considered as part of the selection process under this Article. Examples of prior completed work may be solicited, submitted, and considered when determining demonstrated competence and qualification of

professional services; and discussion of concepts or approaches to the project, including impact on project schedules, is encouraged.”

#### **§ 143-64.32. Written exemption of particular contracts.**

Units of local government or the North Carolina Department of Transportation may in writing exempt particular projects from the provisions of this Article in the case of: Proposed projects where an estimated professional fee is in an amount less than fifty thousand dollars (\$50,000).

#### **§ 143-64.33. Advice in selecting consultants or negotiating consultant contracts.**

On architectural, engineering, or surveying contracts, the Department of Transportation or the Department of Administration may provide, upon request by a county, city, town or other subdivision of the State, advice in the process of selecting consultants or in negotiating consultant contracts with architects, engineers, or surveyors or any or all.

#### **§ 143-64.34. (Effective December 31, 2006)**

##### **Exemption of certain projects.**

(a) State Capital Improvement Projects under the jurisdiction of the State Building Commission where the estimated expenditure of public money is less than hundred thousand dollars (\$100,000) are exempt from the provisions of this Article.

#### **§§ 143-64.35 through 143-64.49: Reserved for future codification purposes.**

This statement of public policy and the results of its use provide the people of North Carolina with the assurance that public funds are providing them with the most qualified and experienced firms to handle each unique project that is undertaken in the public interest.

# Qualifications-Based Selection

## U.S. Public Law 92-582

The United States Congress passed Public Law 92- 582 in 1972 which states that “The Congress hereby declares it to be the policy of the Federal Government to publicly announce all requirements for architectural and engineering services and to negotiate contracts for architectural and engineering services on the basis of demonstrated competence and qualifications for the type of professional services required and at fair and reasonable prices”.

## The American Bar Association

The American Bar Association, on February 13, 1979, in a Model Procurement Code for State and Local Governments also recommended competitive negotiation procedures for selection, repeating the policy stated by Public Law 92-582 (see above).

## APWA Policy Statement

The American Public Works Association believes that the public interest is best served when governmental agencies select architects, engineers and related professional technical consultants for projects and studies through QBS procedures. Basing selections on qualifications and competence (rather than price) foster greater creativity and flexibility, and minimizes the potential for disputes and litigation (see footnote on QBS below).

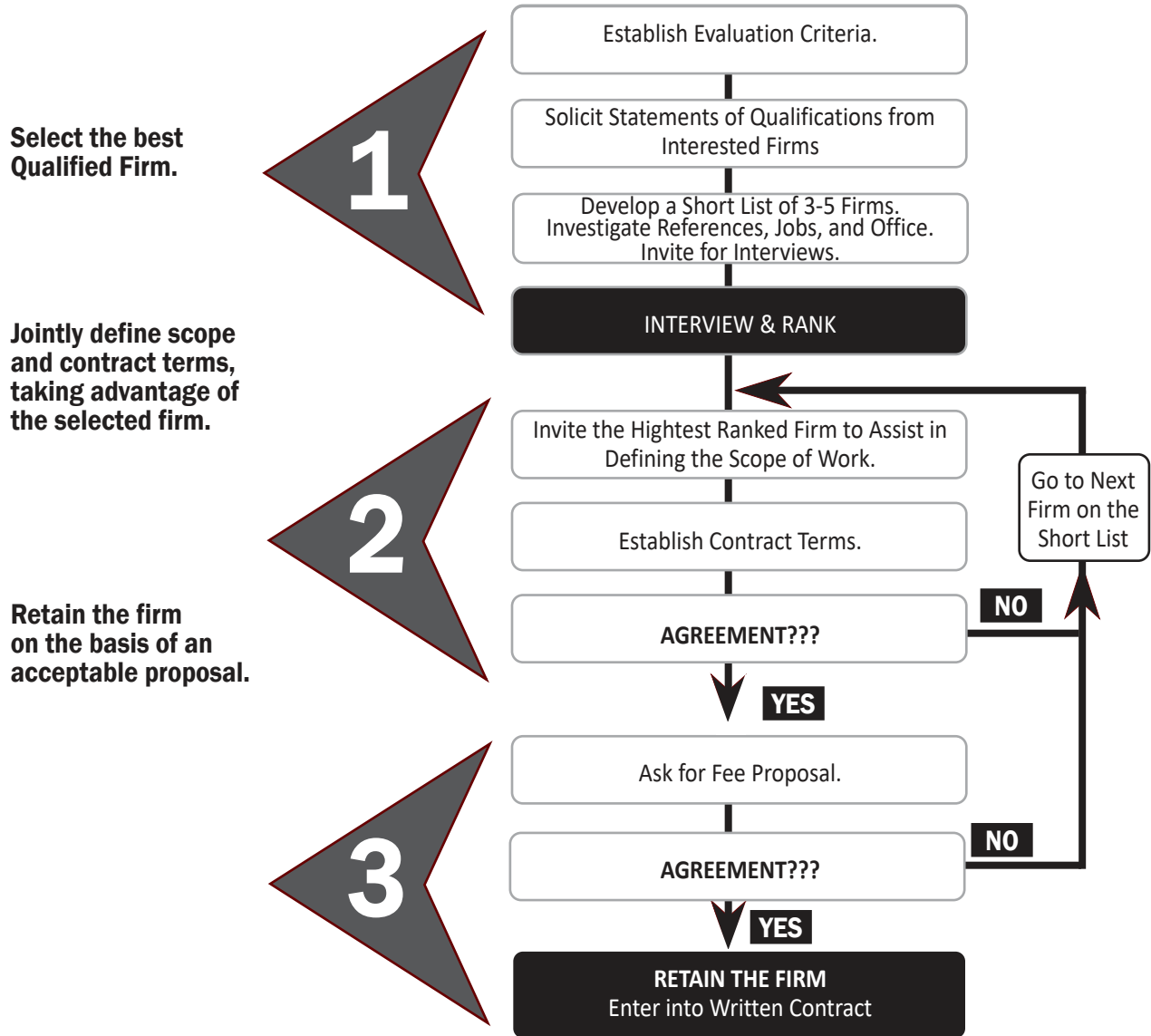
## APWA Footnote:

QBS means that the qualifications of architect- engineer consultants are the determining factors in consultant selection. Agencies alert the consultant community regarding available work and invite interested firms to respond. The responses are screened to determine the firms most likely qualified to meet the agency’s needs. The screening results in a “short-list”, because it is seldom practical or productive

to interview all who may respond. This best- qualified group is invited to appear for interview. Interviewers include technically qualified person and others such as elected officials or citizens having a special interest. The direct presentations, Questions/answers/, and supporting materials of each firm are the basis for ranking the firms in order of relative qualifications. The top-rated firm is then invited for contract negotiations. Price is not ignored, but a realistic price is mutually agreed upon once details on the kinds and extent of work required of the consultant have been established through the negotiations. If agreement cannot be reached with the top firm, negotiations are terminated with that firm and opened with the firm judged next-best qualified.

# QBS - The 3-Step Process

## Qualifications Based Selection Process – Easy as One, Two, Three



ACEC/NC Website provides a [Link to the latest "Qualifications-Based Selection of Design Professionals"](#)

ACEC National provides a [Link to the QBS Resource Center](#)

# Who We Are & The Benefits of Membership

The American Council of Engineering Companies of North Carolina (ACEC/NC) is a member organization of the American Council of Engineering Companies (ACEC), a national federation of state organizations headquartered in Washington, DC.

ACEC/NC works to promote the business interests of engineering companies by providing legislative advocacy and business services for member companies.

Some of the benefits of ACEC/NC membership are:

**MEMBERSHIP MEETINGS**, which provide forums for sharing ideas and experiences between company leaders that often lead to partnering between companies on major projects in the state.

**SEMINARS**, through which required professional development hours (PDH's) can be earned. ACEC/NC seminars provide opportunities to earn at least a total of fifteen PDH's per year to meet the State licensure requirement for licensed engineers.

**MARKETING OPPORTUNITIES** through client contact at special awards ceremonies and joint conferences with State agencies, interaction with partner organizations representing client groups, and interaction with elected officials.

**ACTIVE COMMITTEES**, which focus on practice-area-specific issues that have an impact on how engineering companies do business both at the state and national level. All members of ACEC/NC normally participate in one or more committees and, through their participation, run the affairs of the Council.

**A VOICE IN RALEIGH** on issues impacting member firms. The Executive Director of ACEC/NC is a registered lobbyist for the Council and covers the activities of the General Assembly gavel-to-gavel, advocating on behalf of and protecting the interests of member companies.

**A VOICE IN WASHINGTON** through our national organization, ACEC, our Executive Director and Board of Directors monitor and advocate for legislation beneficial to the industry at the Federal level.

**POLITICAL INVOLVEMENT** through education on legislative issues affecting member companies, organized interaction and support of elected officials of North Carolina (ACEC NC/PAC and "Engineering Companies for NC" Independent Expenditure Account) and ACEC/PAC, which supports candidates at the National level.

**COST-EFFECTIVE INSURANCE** offered through the ACEC Life/Health Trust, which includes health, dental, disability, and life insurance as well as business insurance, retirement plans, and professional liability insurance through ACEC Business Insurance Trust and Retirement Trust, the Trusts can save your company money by leveraging the group purchasing power of more than 5,500 firms and 600,000 employees nationwide to give member companies lower insurance rates.

*For additional information about ACEC/NC member benefits or questions on how to become a member, please contact our office at 919-781-7934 or via email [info@acecnc.org](mailto:info@acecnc.org).*



# **ACEC/NC Index of Membership Firms**

## ACEC/NC Index of Member Firms

A. Morton Thomas and Associates, Inc.....9	DRMP, Inc. ....16	MBP Carolinas .....25
Accelerate Engineering, PLLC .....9	Durisol Noise Barrier Systems.....16	McAdams Company .....25
ACEC Business Insurance Trust.....9	E.L. Robinson Engineering Co.....16	McCormick Taylor, Inc. ....25
ACEC Life/Health Insurance Trust.....9	ECS Southeast, LLP .....17	McDavid Associates, Inc. ....25
ACEC Retirement Trust .....9	Eden & Associates, P.C. ....17	McGill Associates, PA.....25
ARCO Development Services.....9	Edmondson Engineers, PA .....17	McKim & Creed, Inc. ....25
Adams & Hodge Engineering, PC.....9	Energy Land & Infrastructure .....17	Mead & Hunt, Inc.....26
AECOM .....9	Engineered Construction Co., Inc.....17	Medallion Insurance Services .....26
Aerial Analytics LLC.....10	Engineered Designs, Inc. ....17	Medlock & Associates Engineering, PA....26
Alley, Williams, Carmen & King, Inc .....10	ESP Associates, Inc. ....17	MI Engineering, PLLC .....26
Allied Consulting Engineers, PLLC .....10	Exult Engineering, PC.....18	Michael Baker International.....26
Alpha & Omega Group, PC.....10	Falcon Engineering.....18	Mid-Atlantic Associates, Inc. ....26
American Engineering Associates - Southeast, PA.....10	FEI Civil Engineers and Surveyors.....18	Modjeski and Masters, Inc. ....26
Andrew Consulting Engineers, PC.....10	Fleming & Associates, PA .....18	Moffatt & Nichol .....27
Applied Foundation Testing, PLLC.....10	Freese and Nichols, Inc. ....18	Morningstar Law Group .....27
Arcadis G&M of North Carolina, Inc. ....10	Froehling & Robertson, Inc. ....18	Mosher Engineering, Inc. ....27
Areté Engineers .....10	Gannett Fleming, Inc. ....19	Mott MacDonald .....27
ATCS, PLLC.....11	Gavel & Dorn Engineering.....19	MS Consultants, Inc.....27
Atkins.....11	GEL Engineering of NC, Inc. DBA GEL Solutions .....19	Nexsen Pruet.....27
Atlantec Engineers .....11	George Barbour + Associates.....19	Noble Structural Group, PLLC.....27
Aztech, Inc..... 11	Geoscience & Technology, PA .....19	North State Environmental .....27
B2E, Inc. ....11	GPI Geospatial, Inc. ....19	NOVA Engineering & Environmental, Inc. ....28
Baldwin Design Consultants.....11	Green Engineering PLLC.....19	NV5 .....28
Bass, Nixon, and Kennedy, Inc .....11	Green Mountain Engineering, PLLC .....19	NXL Construction Services, Inc .....28
BDC.....11	Grinnell Leadership .....20	O. R. Colan Associates .....28
Benesch .....11	Hamilton Stephens Steele + Martin, PLLC.....20	Orsborn Engineering Group, PA .....28
Bolton & Menk, Inc. ....12	Hardesty & Hanover.....20	Pabst Design Group, PA .....28
Borum, Wade & Associates, P.A..... 12	Harrell Design Group, PC.....20	Parrish and Partners .....28
BREE & Associates, Inc. ....12	Hart & Hickman .....20	Parsons.....28
Brown Consultants .....12	Hazen and Sawyer, PC.....20	Pennoni.....29
C2 Engineering Solutions, PLLC .....12	HDR of the Carolinas .....20	Perigon International .....29
Cape Fear Engineering .....12	HensonFoley.....20	PHC Engineering PLLC.....29
Carolina Ecosystems, Inc.....12	High Country Engineering, PC .....21	Piedmont Design Associates, PA .....29
Carolinas Geotechnical Group, PLLC .....12	Highfill Infrastructure Engineering, P.C....21	Progressive Design Collaborative, Ltd.....29
Catlin Engineers and Scientists .....12	Hinde Engineering, Inc. ....21	Pyramid Environmental & Engineering PC .....29
CDM Smith .....12	HNTB NC .....21	Ragsdale Liggett PLLC .....29
CH Engineering, PLLC .....13	HRV.....21	Ramey Kemp Associates, Inc. ....29
Charlotte Engineers, LLP .....13	Hughes Engineering, PLLC .....21	Reece, Noland & McElrath, Inc .....29
Cheatham & Associates, PA .....13	Hydrostructures, PA.....21	REI Engineers, Inc.....30
Civil Consultants, Inc.....13	ICE of Carolinas, PLLC .....21	Rice LLC - Planning & Environmental Services.....30
Civil Design Concepts, PA .....13	Insurance Management Consultants, Inc. (IMCI).....22	Richard Grubb & Associates (RGA), Incorporated (RGA, Incorporated) .....30
CJS Conveyance, PLLC.....13	Jamestown Engineering Group, Inc.....22	Rinker Design Associates, PC .....30
Clark Nexsen .....13	JC Waller & Associates.....22	Rivers & Associates, INC.....30
CLH Design, PA.....13	JDH Structural Engineers, PLLC.....22	RS&H Architects-Engineers- Planners, Inc.....30
Client Savvy .....14	Johnson Mirmiran & Thompson, Inc. ....22	Rummel, Klepper & Kahl, LLP .....30
Coastal Engineering & Surveying, Inc.....14	KCI Associates of NC, PA .....22	S&ME, Inc.....30
ColeJenest & Stone, PA.....14	Kiewit Engineering Group, Inc.....22	Saber Engineering PA.....31
Colliers Engineering and Design.....14	Kimley-Horn & Associates, Inc. ....22	Safran Law Offices .....31
Conсор Engineers, LLC .....14	Kisinger Campo & Associates Corp.....23	Salas O'Brien.....31
Construction Materials Engineering & Consulting, PC .....14	Kittelson & Associates, Inc.....23	SAM LLC.....31
CPL.....14	Kleinfelder.....23	Schnabel Engineering South, P.C. ....31
CriTek Engineering Group, PC.....14	Koonce, Noble & Associates, Inc. ....23	SEPI, Inc.....31
Crowley Professional Engineers, Inc.....14	LaBella Associates .....24	Shielb PLLC .....31
Davenport.....14	Laurene, Rickher & Sorrell, PC .....24	Simpson Engineers & Associates, PC .....31
David Miller, PE.....15	LHC Structural Engineers .....24	SKA Consulting Engineers, Inc. ....31
Davis-Martin-Powell & Associates, INC .....15	Lindsay Transportation.....24	Soil & Environmental Consultants, PA.....31
DELTA  v  Forensic Engineering, INC.....15	LJB Inc.....24	Sole Source Engineering PC .....32
Delta Airport Consultants Inc. ....15	LMHT Associates.....24	Stambaugh Ness.....32
Delta Oaks Group.....15	Lochner.....24	Stantec.....32
Dewberry.....15	Locklear, Locklear & Jacobs, PLLC .....24	Stewart .....32
Diehl & Phillips, P.A., Consulting Engineers .....16	Lynch Mykins.....24	Stoltzfus Engineering, Inc. ....32
DJG.....16	Maple Engineering, PLLC .....25	
Draper Aden Associates.....16	Mattern & Craig, Inc.....25	
	MBD Consulting Engineers, PA .....25	



<b>STV Engineers, Inc.</b> .....	<b>32</b>
<b>Summer Consultants</b> .....	<b>33</b>
<b>Summit Design and Engineering</b>	
<b>Services, PLLC</b> .....	<b>33</b>
<b>Sungate Design Group, P.A.</b> .....	<b>33</b>
<b>SWCA Environmental Consultants</b> .....	<b>33</b>
<b>SynTerra</b> .....	<b>33</b>
<b>T.Y. Lin International</b> .....	<b>33</b>
<b>T2</b> .....	<b>33</b>
<b>TAE, Inc.</b> .....	<b>33</b>
<b>Taylor, Wiseman &amp; Taylor</b> .....	<b>33</b>
<b>Teeter Engineering Group, PA</b> .....	<b>34</b>
<b>Telics</b> .....	<b>34</b>
<b>Terracon Consultants, Inc.</b> .....	<b>34</b>
<b>TGS Engineers</b> .....	<b>34</b>
<b>THC Inc.</b> .....	<b>34</b>
<b>Theorem Geo Associates</b>	
<b>Engineering, PLLC</b> .....	<b>34</b>
<b>Thigpen Engineering &amp; Consulting, PLLC</b> ..	<b>34</b>
<b>Thinc Strategy, Inc.</b> .....	<b>34</b>
<b>Thompson Engineering Inc.</b> .....	<b>35</b>
<b>Three Oaks Engineering</b> .....	<b>35</b>
<b>Traffic Planning and Design, Inc.</b> .....	<b>35</b>
<b>TRC Engineers</b> .....	<b>35</b>
<b>Trimat Materials Testing</b> .....	<b>35</b>
<b>Tyndall Engineering &amp; Design, PA</b> .....	<b>35</b>
<b>UMA Geotechnical Construction</b> .....	<b>35</b>
<b>United Consulting Group, Ltd.</b>	
<b>dba United Consulting</b> .....	<b>35</b>
<b>Urban Design Partners PLLC</b> .....	<b>35</b>
<b>Utility Coordination Consultants,</b>	
<b>LLC</b> .....	<b>36</b>
<b>UtilityInnovation Group, LLC</b> .....	<b>36</b>
<b>Vaughn &amp; Melton Consulting</b>	
<b>Engineers, Inc.</b> .....	<b>36</b>
<b>Vericom Group LLC</b> .....	<b>36</b>
<b>VHB Engineering NC, P.C.</b> .....	<b>36</b>
<b>Visible Value</b> .....	<b>36</b>
<b>VN Engineers, Inc.</b> .....	<b>36</b>
<b>Volkert</b> .....	<b>36</b>
<b>Wantman Group, Inc.</b> .....	<b>37</b>
<b>Wetherill Engineering, Inc.</b> .....	<b>37</b>
<b>Whitman, Requardt and</b>	
<b>Associates, LLP</b> .....	<b>37</b>
<b>Wiley Wilson</b> .....	<b>37</b>
<b>Willis Engineers</b> .....	<b>37</b>
<b>Withersravenel, Inc.</b> .....	<b>37</b>
<b>W.K. Dickson &amp; Co., INC.</b> .....	<b>37</b>
<b>Wood PLC</b> .....	<b>37</b>
<b>Woods Engineering, PA</b> .....	<b>38</b>
<b>Woolpert NC, PLLC</b> .....	<b>38</b>
<b>Wooten Company, The</b> .....	<b>38</b>
<b>WSE of North Carolina, PC</b> .....	<b>38</b>
<b>WSP</b> .....	<b>38</b>

## Appendix A. PRACTICE AREAS FOR ENGINEERING EXCELLENCE AWARDS

### A

#### Studies, Research, and Consulting Engineering Services

Non-design services including, but not limited to:

- New Products, Materials and Technologies
- Basic Research and Studies
- Technical Papers
- Water Conservation
- Project Feasibility Studies/Economic/Risk
- None of the projects entered in Category A are involved with the preparation of construction documents.
- Expert Testimony
- Computer/Software Technology
- Public Outreach/Involvement
- Security Plans
- Value Engineering

### B

#### Building/Technology

- Systems Mechanical/Electrical/Plumbing
- Communications
- Software Systems
- Efficiency Certification Standards, e.g. LEED
- Secure Facilities (Military, Research, Correctional)
- Computer/Technology
- Acoustics
- Sustainability or Carbon Neutrality
- Energy Efficiency – New and Retrofit

### C

#### Structural Systems

- Foundations
- Buildings
- Towers
- Stadiums
- Tunnels
- Seismic Design
- Bridges

### D

#### Surveying and Mapping Technology

- Geometrics, ALTA, Land Title and Rights Surveys
- Control, GPS, Monitoring or Construction Surveying
- Surveying Mapping, GIS/LIS Photogrammetry

### E

#### Environmental

- Hazardous Waste
- Solid Waste
- Noise
- Waste Pond Management
- Mitigation
- Restoration/Reclamation/Remediation
- Air Quality
- Recycling
- Carbon Sequestration and Trading

### F

#### Water and Stormwater

- Graywater Systems
- Residuals Management and Reuse
- Mine Tailings
- Stormwater Management
- CSOs
- Wastewater Collection/Treatment and Disposal
- Agriculture
- Erosion Control

### G

#### Water Resources

- Hydraulics, Hydrology
- Treatment
- Watershed Management
- Flood Risk Management
- Coastal and Eco-System Restoration
- Irrigation
- Surface and Groundwater Supply Development
- Transmission, Distribution & Storage
- Water Use Reduction
- Climate Adaptation
- Locks/Dams/Water Control Structures

### H

#### Transportation

- Highways
- Rail
- Public Transit
- Airports
- Marine/Ports
- Intermodal Facilities

### I

#### Special Projects

- Safety and Security
- Land Development
- Recreational Facilities
- Program and Construction Management
- Corrosion Protection/Cathodic Protection
- Trenchless Technologies
- Subsurface Engineering

### J

#### Small Projects

Total project construction budget does not exceed \$2.5 Million. At the entrant's discretion, except for entries in Category A, projects under \$2.5 million are not limited to this category.

### K

#### Energy

- Transmission and Distribution
- Power Generation
- Renewable Energy
- Cogeneration
- Energy Storage Technologies
- Energy Usage Reduction Programs
- Demand Side Management

### L

#### Industrial and Manufacturing Processes and Facilities

- Petrochemical
- Biotech
- Manufacturing
- Heavy Industry
- Industrial Waste
- Materials Handling
- Mining, Metallurgy, Mineralogy



# Notes