



Paul Amundson
Evergreen Fire Rescue
Wildland Fire Coordinator

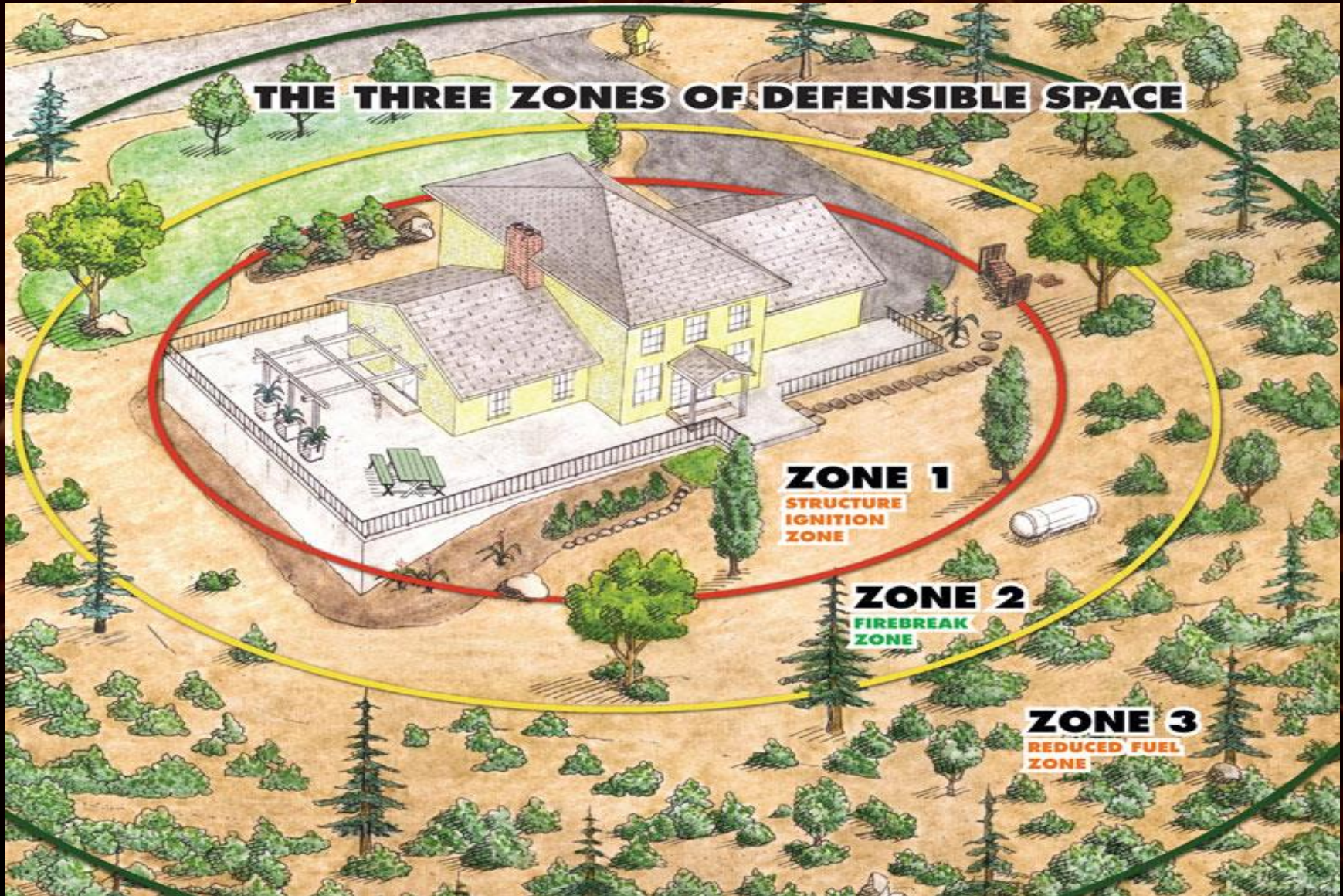
pamundson@evergreenfirerescue.com

303-674-4725 work

Why is Defensible Space Important?

- Over 80 percent of homes with proper defensible space ride out any fire.
- Firefighters will take the time to triage and point protect your home with proper defensible space.
- Protect your valuables and memorabilia.
- Save yourself from being displaced for months to years.
- Peace of Mind!

How do I start to get defensible space around my home?



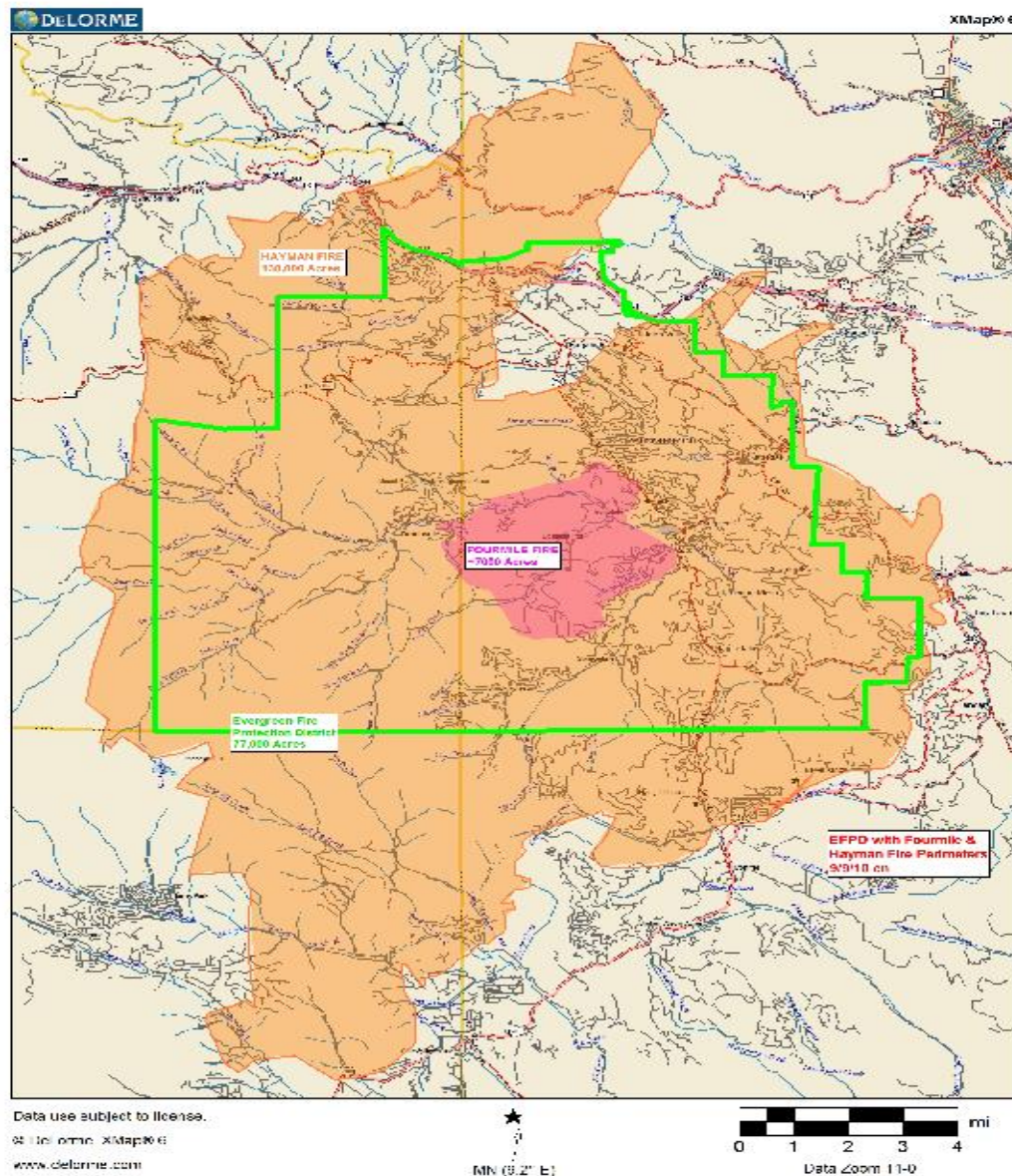
Defensible Space that works. Cold Springs Fire, Nederland, CO



Survived!



Potential large fire event in Evergreen.



Ready. Set. Go!

Ready, Set, Go!

for the Seasonal Resident
and Property Owner



Powered by
the IAFC



The Ready, Set, Go! Program seeks to share information with residents and property owners on how they can successfully become prepared in the event of a wildland fire. Speak with a local fire department about your area's threat for wildland fire and learn more about the wildland urban interface (WUI), an area which is not only limited to forest vegetation. Fire season is an increasing threat and a year-round reality in many areas. As a **seasonal resident** or **property owner**, it's important to educate yourself and do your part to be prepared. The RSG! Program gives you simple, easy to follow tips to increase the safety of you and your family.

Ready – Be ready.

Take personal responsibility to prepare long before the threat of a wildland fire so your property is ready to sustain the threat. Create defensible space by clearing brush away from structures. Use fire-resistant

landscaping and harden structures using fire-safe construction. Assemble emergency supplies and belongings in a safe place. Plan escape routes and make sure all those staying on the property are aware of the plan of action.

Set – Be alert.

Put together a 'go kit.' Learn how to receive and stay aware of the latest news and information on the fire from local media, fire departments and public safety agencies. Prepare your personal wildland fire action plan.

Go! – Act early!

Follow your personal wildland fire action plan. Doing so will not only support your safety, but will allow firefighters to best maneuver resources during mitigation.

Defensible Space – Greatly increases your safety and reduces fire damage!



Defensible space is a buffer zone created by the removal of weeds, brush and other natural vegetation between structures and the wildland urban interface (WUI). Creating defensible space can decrease fire damage to structures and allow space for firefighting operations.

Landscaping plans that include non-combustible materials or fire-resistive plants and regular maintenance can contribute to the creation of defensible space.

Special consideration should be given to wind-driven embers which can travel up to a mile ahead of the flame front. Take care to regularly inspect or replace outside screens and ventilation points.

The keys for Ready, Set, Go!

Ready, Set, Go!

Wildland fire preparedness in partnership
with your local fire department



Powered by
the IAFC



Ready – Be ready.

Talk to *local fire department personnel* about preparing your home for wildland fire threat.

Work to prepare your property by creating *defensible space*.

- ☒ Clean up or relocate combustible material from around your home
- ☒ Keep grass mowed short
- ☒ Trim trees and bushes, to allowing ample space between your home and landscape vegetation

Set – Be alert.

Prepare: a '*go kit*' and include items such as

- ☒ Prescription medication
- ☒ Emergency supplies
- ☒ Important documents

Create your own *action plan*

- ☒ Plan and practice multiple exit routes from your home and neighborhood
- ☒ Assign a meeting place in case you are separated
- ☒ Make sure you're familiar with your local emergency notification and evacuation systems

Go! – Act early!

- ☒ *Remain* alert and keep yourself informed of the situation.
- ☒ Get your '*go kit*' and leave well before the impending threat reaches your community or neighborhood following a planned, accessible route.
- ☒ Cooperate with local authorities during evacuation and re-entry processes.

The Ready!

DEFENSIBLE SPACE ZONES



DEFENSIBLE SPACE

- Creating and maintaining defensible space is essential for increasing your home's chance of surviving a wildfire. It's the buffer that homeowners create on their property between a structure and the plants, brush and trees or other items surrounding the structure that could catch fire. This space is needed to slow the spread of wildfire and improves the safety of firefighters defending your home. Two zones make up the 100 feet of defensible space:
 - **ZONE 1**—Extends **30 feet** out from buildings, decks, and other structures
 - 1. Remove all dead plants, grass and weeds.
 - 2. Remove dead or dry leaves and pine needles from your yard, roof and rain gutters.
 - 3. Trim trees regularly to keep branches a minimum of 10 feet from other trees.
 - 4. Remove dead branches that hang over your roof. And keep branches 10 feet away from your chimney.
 - 5. Relocate exposed woodpiles outside of Zone 1 unless they are completely covered in a fire resistant material.
 - 6. Remove or prune flammable plants and shrubs near windows.
 - 7. Remove vegetation and items that could catch fire from around and under decks.
 - 8. Create a separation between trees, shrubs and items that could catch fire, such as patio furniture, swing sets, etc.
 - **Zone 2**—Extends **30 to 100** feet from buildings and other structures
 - 9. Cut or mow annual grass down to a maximum height of 2 inches.
 - 10. Mow before 10 a.m., but never when it's windy or excessively dry.

Create a Wildfire Action Plan (SET)

- Your Wildfire Action Plan Checklist:
- Create an evacuation plan that includes: A designated emergency meeting location
- outside the fire or hazard area. This is critical to determine who has safely evacuated from the affected area.
- Several different escape routes from your home and community. Practice these often so everyone in your family is familiar in case of emergency.
- Have an evacuation plan for pets and large animals such as horses and other livestock.
- A family communication plan that designates an out-of-area friend or relative **as a point of contact** to act as a single source of communication among family members in case of separation.

Be Prepared:

- Have fire extinguishers on hand and train your family how to use them. (Check expiration dates regularly.)
- Ensure that your family knows where your gas, electric, and water main shut-off controls are located and how to safely shut them down in an emergency.
- Assemble an Emergency Supply Kit for each person, as recommended by the American Red Cross.
- Maintain a list of emergency contact numbers posted near your phone and in your emergency supply kit.
- Keep an **extra** emergency supply kit in your car in case you cannot get to your home because of fire or other emergency.
- Have a portable radio or scanner so you can stay updated on the fire.
- Tell your neighbors about Ready, Set, Go! and your Wildfire Action Plan.

The Six P's!!!!

THE SIX P'S

REMEMBER THE SIX "P's"

KEEP THESE SIX "P's" READY IN CASE IMMEDIATE EVACUATION IS REQUIRED:

- People and pets
- Papers, phone numbers, & important documents
- Prescriptions, vitamins, and eyeglasses
- Pictures and irreplaceable memorabilia
- Personal computer hard drive and disks
- "Plastic" (credit cards, ATM cards) and cash

EMERGENCY SUPPLY KIT CHECKLIST

- EMERGENCY SUPPLY KIT CHECKLIST **Three-day** supply of non-perishable food and three gallons of water per person.
- Map marked with at least two evacuation routes
- Prescriptions or special medications
- Change of clothing
- Extra eyeglasses or contact lenses
- An extra set of car keys, credit cards, cash or traveler's checks
- First aid kit
- Flashlight
- Battery-powered radio and extra batteries
- Sanitation supplies
- Copies of important documents (birth certificates, passports, etc.)
- Don't forget pet food and water!
- Items to take if time allows: Easily carried valuables
- Family photos and other irreplaceable items
- Personal computer information on hard drives and disks
- Chargers for cell phones, laptops, etc.

PROTECT WHAT IS IMPORTANT TO YOU — GET YOUR FINANCES AND PROPERTY READY FOR WILDFIRES

- Conduct an Annual Insurance Check Up
- Know What Your Policy Covers
- Update Your Policy to Cover Home Improvements
- Maintain Insurance
- Get Renters Insurance

MAKE A HOME INVENTORY

- **Video or photograph each room of your home.**
- **Describe your home's contents in your video.**
- **Remember to note important or expensive items.**
- **Save receipts for major purchases.**
- **Video the Garage**

WILDFIRE IS COMING. ARE YOU READY TO...GO!

- Take action immediately when wildfire strikes
- Follow these steps as soon as possible to get ready to Go!
- Review your Evacuation Checklist.
- Ensure your Emergency Supply Kit is in your vehicle.
- Cover up to protect against heat and flying embers. Wear long pants, long sleeve shirt, heavy shoes/boots, cap, dry bandanna for face cover, goggles or glasses, 100% cotton is preferable.
- Locate your pets and take them with you.

GO!!!!

- **Leave as soon as evacuation is recommended by fire officials**
- to avoid being caught in fire, smoke or road congestion. Don't wait to be ordered by authorities to leave. Evacuating early also helps firefighters keep roads clear of congestion. If you are advised to leave, don't hesitate!
- Officials will determine the areas to be evacuated and escape routes to use depending upon the fire's location, behavior, winds, terrain, etc.
- Law enforcement agencies are typically responsible for enforcing an evacuation order. Follow their directions promptly.
- You will be advised of potential evacuations as early as possible. You must take the initiative to stay informed and aware. Listen to your radio/TV for announcements from law enforcement and emergency personnel.
- You may be directed to temporary assembly areas to await transfer to a safe location.

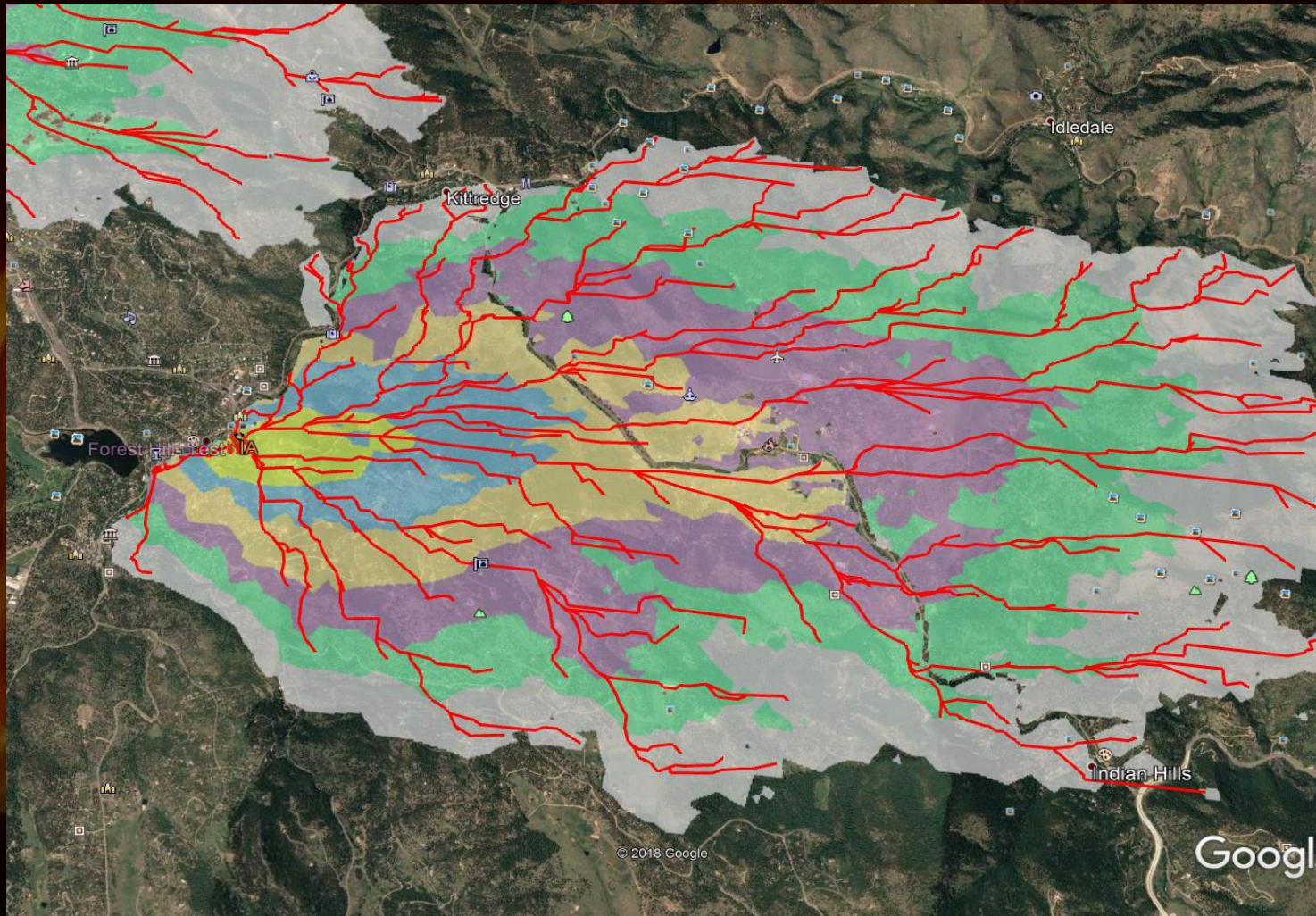
The outlook

- Wildland fire is a natural occurring event that happens in the foothills.
- It is a matter of time before Evergreen experiences a large fire event.
- Evergreen/Conifer Colorado rank number 1 for potential loss in Colorado and are in the top 10 for the Country.
- Prepare now, don't wait its coming.

Start or get involved with a Community Wildfire Protection Implementation Plan!!! (CWPIP)

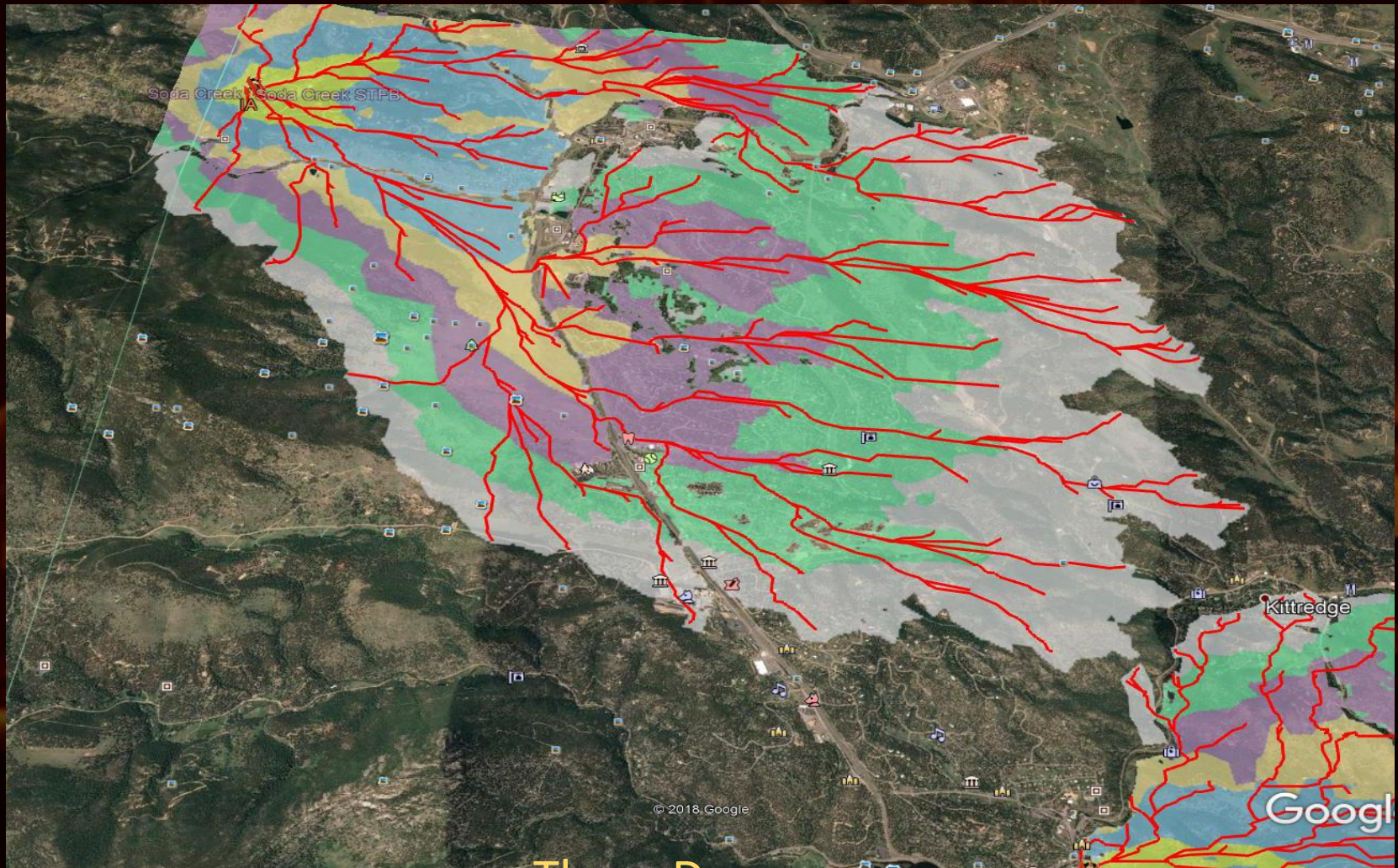
- A CWPIP is a specific community based i.e. HOA or multiple HOA's wildfire plan.
- It Addresses specific escape routes, hazard areas, fire danger in the neighborhoods and prioritizes mitigation/defensible space to be completed.
- Organizes the HOA so group work can be completed.
- Dramatically increases grant money opportunities for the HOA or group of HOA's.
- Contact John Chapman for more info.
- Resourcehelp@outlook.com

Forest Hills Fire simulation



Three day run

Soda Creek Fire Simulation



Three Day run

Resources available

- <http://www.readyforwildfire.org/Ready-Set-Go-Campaign/>
- <https://www.jeffco.us/slash>
- <https://csfs.colostate.edu/csfspublications/>

Jack Cohen video



Help support Health and Safety Day!

FIRE * MEDICAL * LAW ENFORCEMENT * DISPATCH



HEALTH & SAFETY DAY

A COMMUNITY EVENT BROUGHT TO YOU BY LOCAL FIRE & LIFE SAFETY AGENCIES.

8:00AM-2:00PM

SATURDAY AUGUST 25TH, 2018
1802 BERGEN PARKWAY, EVERGREEN CO

*FREE PANCAKE BREAKFAST

*BLOOD DRIVE

*BICYCLE SAFETY COURSE

*ANIMAL ADOPTIONS

*GIVEAWAYS

*WILDLAND FIRE FORUM

*SIDE-BY-SIDE BURN ROOM

*FLIGHT FOR LIFE LANDING

*FIRE TRUCK RIDES

*BOUNCY HOUSES

*FIRE DEMONSTRATIONS

*FIRE HOSE WATER SHOOT

*SIDEWALK CPR

*EXTINGUISHER SERVICES

*FREE HOT DOG BBQ

AND MANY OTHER EVENTS





Thank you.
Questions ?

