



# Evergreen Chamber Newsletter

o Upcoming Events o New Members o Ribbon Cuttings o & More o



**Catalyst**

for Business  
growth

**Convener**

of leaders  
And  
influencers

**Champion**

for a strong  
community



EVERGREEN AREA  
Chamber of Commerce

October 2019 Edition



## Thank You Members

### Chairman's Circle



### Partner



### Executive

- ◆ Bear Creek Design Group
- ◆ Big O Tires Evergreen
- ◆ Brown Contracting & Remodel
- ◆ Cactus Jack's Saloon & Grill
- ◆ Caldwell Insurance Agency Inc. American Family
- ◆ Diane Florschuetz/Coldwell Banker Real Estate
- ◆ Evergreen Medical Acupuncture
- ◆ Evergreen National Bank
- ◆ Felde CPA Group, LLC
- ◆ High Country Low Voltage LLC
- ◆ Jefferson Center
- ◆ Kevin McGuire, MBA, Transamerica Financial Advisors
- ◆ NeuroOptimize
- ◆ Paul Davis Restoration of the Front Range
- ◆ Peggy and Lee Bertrand / Windermere Real Estate
- ◆ RPM Agency Insurance Brokerage
- ◆ SEO Forensic Marketing
- ◆ Swan Realty Group
- ◆ The Barber Stop
- ◆ The Wild Game
- ◆ Wander Unlimited
- ◆ Wells Fargo Private Mortgage Bank NMLS #1271595 (Gerri Peltó)

## Filling the Glass of Local Businesses

It is said that life can be looked at in two ways-the glass half full or the glass half empty. One is positive and hopeful, one is negative and stagnant. Here at the Evergreen Chamber our staff strives not only to champion local businesses but we work hard to make sure their glass is overflowing. Overflowing with referrals that become new clients and new connections. We strive to champion local needs in a future facing way, with decisions that consider how to create a strong economy and thriving community.

Our mountain community is known for recreational beauty, caring residents and small individually owned businesses. People come from all over the world to sample what we have and put on their bucket list to move to the Foothills outside of Denver. What keeps us strong and vibrant is that businesses and residents work together to grow the local economy, giving us all terrific choices for shopping, dining, self pampering and more. We are lucky to have options but business does not grow on its own.

Growing the economy takes collaboration and local support from residents and businesses alike. Our community does not have space for lots of new neighborhoods meaning that our population growth is minimal. Businesses rely on customers and getting a new influx of customers comes from visitors from out of town and citizens choosing to shop here instead of online.

Did you see the Wall Street Journal article about Evergreen last month? Many locals posted on Facebook, friends and relatives across the country read it and told loved ones about the article and our community swelled with pride. Pride is what being a successful town and a successful business is all about. Members of the Evergreen Chamber take pride in what they do and are excited to share it with locals and travelers every day.

The staff at the Evergreen Chamber takes pride in promoting its members to each other and to our population at large. Day in day out we all work together to grow the local economy without drastically growing our population. It is not easy but it is necessary. The next time you need a gift think about what we have right here in our mountain community before you go to Amazon.com. Here you can go to the store, meet the owner and buy something a loved one will cherish. Not sure where to go or need an idea? Call the Chamber. It is our job to know and confidently recommend the services of our local businesses whether they be a taffy shop, a brewery, a contractor or a dentist.

The word proud signifies a feeling of deep pleasure or satisfaction as a result of one's own achievements, qualities, possessions or those of someone with whom one is closely associated. Synonyms are pleased, happy, delighted, thrilled and appreciative. All of these adjectives express how the Evergreen Chamber staff feels about its member businesses and our mountain community. Join us in growing the local economy by working together. Share with friends your experiences and if you are a local business looking to grow your bottom line, join the Evergreen Chamber and be a part of the conversation.

Some days can be tough to focus on a glass that is half full and filling up. Businesses and residents alike find joy in being positive. Together we can truly live in an environment of growing enthusiasm, rising property values and excitement. We can all be proud together of what we are and what we will become.

Remember, visit the Evergreen Chamber website, follow us on Facebook and shop local.

*Betsy Hays*

Betsy Hays  
President & CEO, Evergreen Chamber  
(303) 674-3412 | EvergreenChamber.org





## Featured Upcoming Event

THE EVERGREEN CHAMBER PRESENTS

# Breakfast with Santa



BRING YOUR CAMERA, TAKE AS MANY PHOTOS AS YOU WANT

**SATURDAY, NOVEMBER 30TH  
AT THE BISTRO AT MARSHDALE**

**4 SEATING'S: 8:30, 9:30, 10:30, 11:30 AM**

**THIS EVENT SELLS OUT-TICKETS ON SALE NOW!  
ADVANCE TICKETS \$18 ADULT / \$15 KID  
EVERGREENCHAMBER.ORG (303) 674-3412**

\*Due to circumstances beyond our control the Evergreen Lake House is closed for the season so the venue has been changed. See photos of this year's venue at EvergreenChamber.org



Seasonally Yours

**SPONSORSHIPS STILL AVAILABLE  
EVERGREENCHAMBER.ORG**



# Upcoming Chamber Events

## Monthly Chamber Breakfast

o Coffee o Breakfast o Networking o Education o

**Wednesday November 6th 7:30-9am**  
**El Rancho Brewing Company**

**\$15 Members | \$20 Not-Yet Members in advance at [EvergreenChamber.org](http://EvergreenChamber.org)**

**At the door: \$25 Members | \$30 Not-Yet Members**



Mountain Metro  
Association of REALTORS®

*Guest Speaker: Lisa Cutter  
State Representative*

## Business Expo Mixer

**\*Wednesday\* November 13th 5-7:30**

Join us for our special mixer this month. Come network with other local business owners, win fantastic door prizes and enjoy food & beverages. Bring plenty of business cards!



**Evergreen Elks Lodge**  
**27972 Iris Drive**  
**Evergreen 80439**

**\$5 Members/\$10 Not-Yet Members**

Market your business, become an exhibitor.  
Booth spots are only \$25 - limited availability -  
Call the Evergreen Chamber today to reserve your spot.  
- Members Only Opportunity -

## Sparkle & Shine Holiday Gala & Annual Business Awards

Please join us as we honor the  
best businesses of 2019!

**Thursday, December 12th**  
**5:30-9:00 pm**  
**The Wild Game**  
**1204 Bergen Parkway, Evergreen 80439**

Silent Auction, Raffle for \$1000 cash,  
and live music by  
The Mostly Pretty Random All Stars!

\$80 includes Hors D'oeuvres, dinner,  
drinks & entertainment  
~ 8 seats & sponsorship for \$1000 ~

**Mark Your Calendars!**  
Tickets on sale mid November  
[EvergreenChamber.org](http://EvergreenChamber.org)  
or call (303) 674-3412



# Ribbon Cuttings



## Evergreen Medical Acupuncture

*At Evergreen Medical Acupuncture we use functional medicine + western diagnostics to treat almost any condition with an anatomy-based acupuncture system. We are Colorado's premier acupuncture clinic!*

Dr. Christina Fick - Owner  
Jill Zundeleovich – Acupuncturist  
30480 Stagecoach Blvd | Evergreen 80439  
(303) 594-8348  
drchristinafick.com



## Petite Maison Café

*We are a drive-thru / walk-up café serving mountain strong coffee, espresso drinks, and pastries. We are kid friendly, dog friendly, and bike friendly. Come relax by the creek!*

Shannon Ruth - Owner  
26290 Highway 74 | Kittredge 80457  
(512) 954-1407  
petitemaisoncafe.com



## The Andersen Group at RE/MAX Alliance

*The Andersen Group is focused on helping their clients find the home of their dream. Mountain area specialists and residents makes them the perfect partner.*

Meredith Andersen - Owner  
30406 Bryant Dr | Evergreen 80439  
(303) 353-8476  
andersenhomegroup.com



## Sculpture Evergreen

*Very few towns the size of Evergreen have such a wealth of outdoor sculptures on display, all made possible by Sculpture Evergreen. You may wish to walk several trails, which will allow you to view twenty-three of the permanent pieces and many of the annually placed pieces in the Walk. A self-guided tour features a description of each piece that can be accessed by cell phone at each location. Maps are also available.*

Bill Slaughter - President  
P.O. Box 3657 | Evergreen 80437  
(720) 608-1278  
sculptureevergreen.org



## The Granger Network

*The Granger Network is an executive coaching firm. We provide leadership training, cultural alignment, and personalized coaching – ensuring all stakeholders thrive while organizations rise.*

Kari Granger - CEO & Principal  
32065 Castle Court, Suite 225C | Evergreen 80439  
(719) 648-6534  
grangernetwork.com



# Ribbon Cuttings



## Jackie Mohr, J.Hilburn Menswear

*I offer my clients a truly personal wardrobe that fits every occasion of his life. Custom shirts, made-to-measure suits & sportswear for men of all sizes. For the life you want & the life you have.*

Jackie Rosenblum Mohr - Personal Stylist  
2922 Evergreen Parkway Suite B-201 | Evergreen 80439  
(720) 971-0144  
jackierosenblummohr.jhilburn.com



## Expert Adventures

*With our busy lives and chaotic schedules, time is our most precious non-renewable asset. Expert Adventures specializes in curating personalized travel itineraries that maximize value and your time.*

Andrew Stevens - Owner  
Evergreen 80439  
(928) 606-4031

## 1st Colorado Roofing



**Call Steve at (720) 271-1560  
or email**

**ssolawetz@1stcoloradoroofing.com  
to redeem your  
complimentary roof inspection!**

*We all know that hail can cause serious damage to your roof.*

Most people would agree that getting your roof inspected after a hail storm is a great way to protect your home and to have peace of mind.

Steve Solawetz is a certified HAAG Engineered Residential Roof Inspector who can determine the integrity of your roof and if it has storm damage.



# Welcome New Chamber Members!

new



## Evergreen Cooking School and Gourmet Goods

*Join us in our fabulous kitchen for an unforgettable culinary experience. Our classes are comprised of Demonstration, Hands-on, and Tastings. We also offer gourmet goods, gadgets and culinary tours.*

Mark Pridgen - Owner/Operator  
1254 Bergen Pkwy D 114 | Evergreen 80439  
(303) 225-4660  
evergreencookingschool.com



## Paradise Publishing

*Evergreen's premier cartoon map includes a business directory of local participating businesses in the Evergreen area. Visit [EvergreenColoradoMap.com](http://EvergreenColoradoMap.com)*

Bridgette Maxwell - Publisher  
Crested Butte 81224  
(970) 596-3396  
evergreencoloradomap.com



## BAS Groundwater Consulting, Inc

*Groundwater consulting services for DIAs, APPs, ASR, Permitting and Compliance, impact analyses, data management, groundwater modeling, 3D geologic modeling, and GIS development.*

Betsy Semmens - Owner  
3649 Evergreen Parkway Ste 1510 | Evergreen 80437  
(720) 334-8249  
basgroundwater.com



## Paul's Painting Company

*We are a full-service paint contractor specializing in custom interior and exterior repaint and re-stains. We also handle small drywall projects, drywall and wood repairs, texture, & texture repairs.*

Paul Willoughby - Owner/Operator  
Evergreen 80439  
(720) 364-6363



## Aspen Springs Property Inspections, LLC

*Aspen Springs Property Inspections is a dependable home inspection company. We identify potential problems in your home and provide you with accurate results and recommendations. ASHI Certified.*

Otto Moore - Owner/Operator  
Black Hawk 80422  
(720) 519-3019  
as-pi.com



## JOY International

*Joy international is dedicated to the rescue, restoration, and reintegration of children, teens and young women affected by trafficking and the prevention of child trafficking worldwide.*

Gina Moran - Executive Director  
Conifer 80433  
(720) 209-6860  
joy.org



# Welcome New Chamber Members!

new



## Osmosis Beauty

Since 2007, Osmosis has been one of the most trusted professional global skincare brands. Based out of Evergreen, Colorado, we offer various skincare, makeup, and wellness products.

David Dustin - President  
30746 Bryant Drive #410 | Evergreen 80439  
(877) 777-2305  
OsmosisBeauty.com



## Grounded Massage, LLC. (Angela Ryan)

Licensed Massage Therapists specializing in Deep Tissue, FRT, NMT, MET, and Functional Neurology. She also has a professional acupuncturist on staff

Angela Ryan - Owner  
2932 Evergreen Pkwy | Evergreen 80439  
(303) 907-4829  
grounded.massagetherapy.com



## Above & Beyond Pet Care Services

Pet Care Services for dogs, cats, birds, etc. Services offered: overnight pet care in pet's home, dog walking, let outs, feedings and extended walks, play time and more.

CJ Lydon - Owner  
Evergreen 80439  
(630) 388-8824



# YOUR AD HERE



For \$99 you can include an ad in one of our Monthly Chamber Newsletters,  
which is emailed out to our 3,000 contacts.

Executive level members and above get one ad for **FREE** as part of their membership.

You provide the ad to us, and we place it in the newsletter before distribution.

The advertisement space is 8 in wide x 5 inches tall, horizontal only.

We are scheduling for the end of 2019 & 2020 now! **Limited availability, first come first serve.**

Email Gwendoline at [marketing@evergreenchamber.org](mailto:marketing@evergreenchamber.org) to reserve your space today!





# Members in the News

## Ambary Gardens Celebrates New Location!

Ambary Gardens welcomes you to explore our 2nd store location - located at 15000 West 6th Ave, Suite 104.

Next time you are in Denver West, swing by for the same excellent CBD education and customer service with our locally and organically grown hemp derived CBD products.

10-6 Monday-Friday.

**Kathryn Mitchem - Marketing**  
26479 Highway 74,  
Kittredge 80457

15000 West 6th Ave, Suite 104,  
Golden 80401

(720) 328-1514  
Ambarygardens.com



**Ambary Gardens**  
quality alternative remedies

## Women to Women Leads Group Event

Looking to grow your business?  
The Woman 2 Woman Leads Group is having a recruiting event on November 13th.

They invite you to join them for breakfast and find out what they are all about! Details below.

### W2W Event

Wed. November 13th  
8:30-10:30 am  
Meadow Creek Design Studio  
32156 Castle Ct. #106  
Evergreen 80439

Questions?  
Call Kris Vallin, Group Leader  
at (720) 593-0144.



## Vote Yes on 1A to Avoid Painful Budget Cuts

Jefferson County Commissioners have put Issue 1A on the November ballot – asking voters to suspend TABOR revenue limitations from 2020-2026.

Without 1A, the county will have to cut \$16.1 million from its 2020 budget, including cuts to public safety, roads, and other essential county services. To learn more, visit [KeepJeffcoSafe.com](http://KeepJeffcoSafe.com).

**Jefferson County Board of Commissioners**  
(303) 271-8525  
100 Jefferson County Parkway  
Ste 5550  
Golden 80419  
[KeepJeffcoSafe.com](http://KeepJeffcoSafe.com)



## Sculpture Evergreen Celebrates 25 years with Baby Oliver Contest



Sculpture Evergreen commissioned a smaller version of "Oliver" for a raffle during their 25th Anniversary Celebration, and they have been selling the raffle tickets for "Baby Oliver" at events throughout the summer.

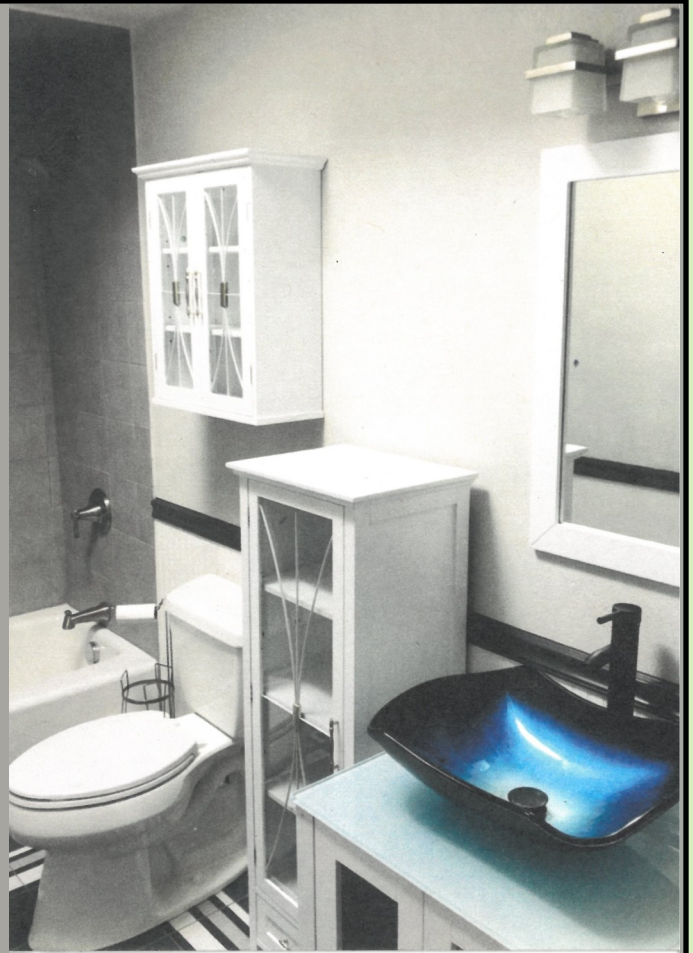
The raffle tickets are still available from **Dale Glover at (425) 260-9399 or [dalehglover@yahoo.com](mailto:dalehglover@yahoo.com)** and from Sculpture Evergreen Board members.

The drawing for "Baby Oliver" will be held October 25 at Boogie at the Barn.

**Bill Slaughter - President**  
P.O. Box 3657  
Evergreen, 80437  
[sculptureevergreen.org](http://sculptureevergreen.org)



# Kitchen & Bath Design



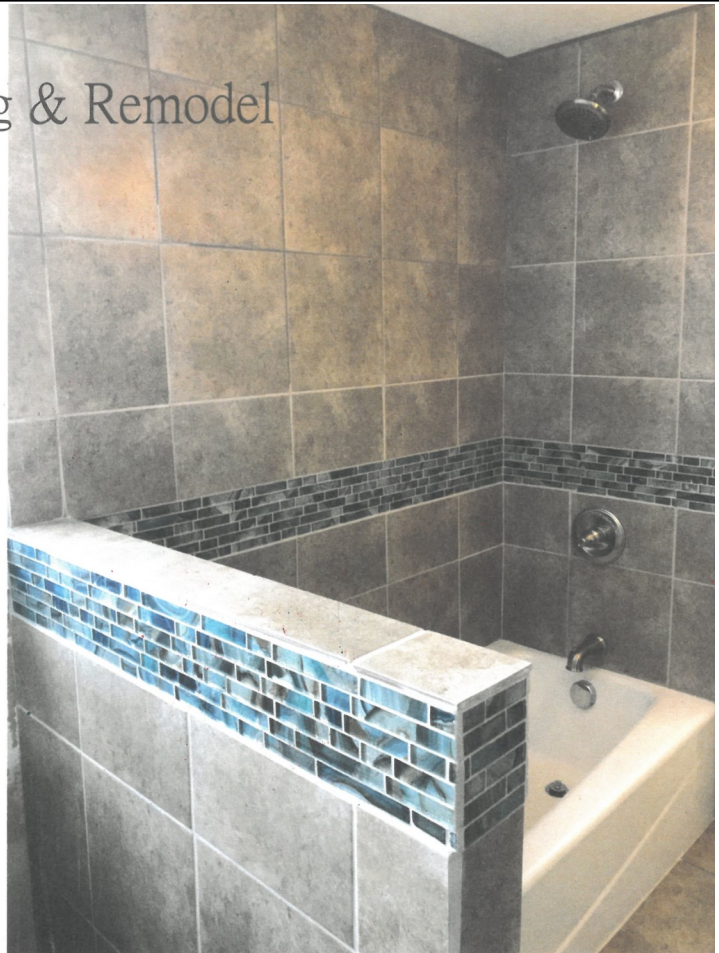
Brown Contracting & Remodel  
[www.BCR.Earth](http://www.BCR.Earth)

BCR specializes in both residential and commercial "green" remodeling improvements, custom tiling, kitchen and bath design, complete deck restoration, general home carpentry/handyman repair and light demolition.

Our primary goal is to meet all of our client's construction needs and dreams through quality craftsmanship, sustainability and "green" building ideals.

720.219.5913

[BCR.Earth@gmail.com](mailto:BCR.Earth@gmail.com)







# Swan Realty Group



Interview with Sandy Swan  
(303) 350-7331 [swanrealtorgroup.com](http://swanrealtorgroup.com)  
28225 Highway 74 | Evergreen 80439



SELLING WITH STYLE  
FROM THE MOUNTAINS TO THE PLAINS

## Q: How did Swan Realtor Group get started?

Swan Realtor Group began in 2001 with Sandy Swan and one team member. Sandy's previous career was teaching at the University of Minnesota and the University of Hawaii. Over a period of 19 years, the team grew into the Swan Realty Brokerage with 14 team members. Our philosophy is to educate our clients (whether it be the market, the loan process, home buying, home selling, relocation, investment, residential or commercial properties).

## Q: How is your company involved in the community?

Our company volunteers in many Evergreen organizations such as "Flowers for a Friend" where Sandy and several other community members placed a bronze sculpture at Hiwan Museum. The Bronze represents giving back to the community, memorializing Louise and Bill Mounsey for all of their community efforts over the past 60+ years in Evergreen. Swan Realty Brokers also volunteer at EAPL, Big Chili, Women of Evergreen Businesses (recycling, "Share the Love," Woman's Peace House in Bailey).

## Q: What is new with Swan Realty Group?

Swan Realty now has two office locations. Downtown Main Street in Evergreen across from Baskin Robbins and in Cherry Creek next to Trader Joe's. Sophisticated Properties is a division of Swan Realty and does high end leasing for owners. We welcome all of the mountain residents to stop in and say "hi" and enjoy a refreshment, local coupons from our community businesses and learn what's going on in your area.

## What's in it for me?

You've probably asked yourself this question if you've ever considered joining a service club. Here are the reasons given most often by our members:

- A great way to meet like-minded people in the community
- An opportunity to be involved in meaningful service projects in Evergreen and internationally
- Excellent business networking opportunities
- A way to set an example of service and philanthropy for my young children
- Giving back has never been so much fun

Thanks to our Evergreen Rotary Club sponsors:



What is the Rotary sponsorship program? If you would like to know more, please call or email Tim Grace: Cell - 305-926-5894. Email - [Tim.Grace@N2Pub.com](mailto:Tim.Grace@N2Pub.com)



## Rotary

Club of Evergreen Colorado



## You're Invited

**What:** Rotary Breakfast, Fridays, 7.00 a.m.

**Where:** Evergreen Country Day School, El Rancho (behind Home Depot)

**Why:** Because we value our Evergreen Community and welcome those who'd like to get to know us to share in our fun, enjoy engaging speakers and build your business.

**Connect:** Log on to [evergreenrotary.org](http://evergreenrotary.org) for a list of speakers. Call or email Chuck Adams if you'd like more info and/or wish to attend [chucka@1updrones.com](mailto:chucka@1updrones.com) - 972-567-2059

# Thank You Renewing Members

These members renewed their Chamber membership last month.

## 1 + YEARS

Alpha Company Electric LLC  
Buffalo Park Dentistry  
Champion Charter Bus Company  
College Nannies, Sitters & Tutors of Golden and Ken Caryl  
Convenience Plus Hilltop Sinclair  
Denver Charter Bus Company  
Lariat Lodge Brewing Company  
LeaderOne Financial Corp.  
Nancy Staub State Farm Insurance  
National Charter Bus Denver  
Swim4Life  
Tomm TV Colorado  
US Health Advisors

## 5 + YEARS

Bootstraps, Inc  
Crossroads Chiropractic & Acupuncture  
Evergreen Home Concierge  
Hands on Fire Massage, LLC.  
Myra Purkey/RE/MAX 100  
State Farm Insurance / Michelle Boley

## 10 + YEARS

Into Your Hands- Africa  
Juice Plus+  
Mountain Vet to Pet

## 15 + YEARS

LIV Sotheby's International Realty  
Shephard Realty, Inc.

## 20 + YEARS

Tallgrass Aveda Spa & Salon  
Scripps, Taylor & Associates, PC

## 25 + YEARS

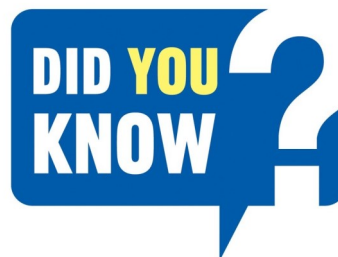
Blue Quill Angler, Inc.



### *Your Evergreen Chamber Staff*

Betsy Hays  
Gwendoline Ryan  
Clair Hicks  
Patti Morris  
Valli Crockett  
Candace O'Brien  
Betsy Semmens  
Tracy Murray  
Jackie Mohr  
Marie Lynch

President/CEO  
Marketing Manager  
Operations Manager  
Accounts Manager  
Membership Coordinator  
Membership Coordinator  
Membership Coordinator  
Membership Coordinator  
Skate The Lake Event Mgr.  
Skate The Lake Volunteer Mgr.



**Chamber Members of all levels  
can save \*0.20c per piece of mail by  
taking advantage of the Evergreen  
Chamber's bulk mail stamp!**

Drop by the Evergreen Chamber to sign out a  
stamp and just return it when you're done,  
it's that easy!

**Take advantage of your membership!**  
Top 15 Marketing Opportunities  
& "How To" documents available at  
[evergreenchamber.org/online-education](http://evergreenchamber.org/online-education)





# EVERGREEN AREA Chamber of Commerce

## October-November 2019

| Mon  | Tue   | Wed  | Thu  | Fri   |
|--|---|--|--|---|
| 14<br><b>Ribbon Cutting -</b><br><b>Jackie Mohr, J. Hilburn</b><br><b>Menswear</b><br><b>4:30 PM</b>   | 15<br><u>Early Morning Edition</u><br><u>Leads,</u><br><b>7:30 AM</b><br><b>Quarterly Nonprofit</b><br><b>Meeting, Mount Evans</b><br><b>Home Health Care &amp;</b><br><b>Hospice</b><br><b>3:00 PM</b><br><b>Ribbon Cutting -</b><br><b>Mural Downtown by Cactus</b><br><b>Jacks</b> | 16   | 17<br><u>Day Break B2B</u><br><u>Leads, Windermere</u><br><u>Conference Room,</u><br><b>8:00AM</b><br><u>Lunch Bunch Leads,</u><br><u>Tuscany Tavern,</u><br><b>11:30 AM</b> | 18  |
| 21<br><b>11/6—</b><br><b>Monthly</b><br><b>Chamber</b><br><b>Breakfast,</b><br><b>El Rancho</b><br><b>Brewing</b><br><b>Company</b><br><b>7:30 AM</b>  | 22<br><u>Early Morning Edition</u><br><u>Leads,</u><br><b>7:30 AM</b>   | 23   | 24<br><b>Ribbon Cutting -</b><br><b>Colorado Furniture</b><br><b>12:00PM</b>   | 25<br><b>Ribbon Cutting—</b><br><b>Edward Jones/Ed</b><br><b>Hellums</b><br><b>12:00 PM &amp;</b><br><b>Everfit 20</b><br><b>12:45 PM</b> |
| 28<br><b>11/13—</b><br><b>Women 2</b><br><b>Women</b><br><b>Leads</b><br><b>Group</b><br><b>Information</b><br><b>Breakfast,</b><br><b>Meadow</b><br><b>Creek</b><br><b>Design</b><br><b>Studio—</b><br><b>Bergen Park</b><br><b>8:30 AM</b> | 29<br><u>Early Morning Edition</u><br><u>Leads,</u><br><b>7:30 AM</b>   | 30   | 31<br><u>Day Break B2B</u><br><u>Leads, Windermere</u><br><u>Conference Room,</u><br><b>8:00AM</b><br><u>Lunch Bunch Leads,</u><br><u>Tuscany Tavern,</u><br><b>11:30AM</b>  | 1<br><b>Ribbon Cutting -</b><br><b>Eudaimonia Human</b><br><b>Flourishing Center</b><br><b>12:00 PM</b>                                   |
| 4<br><b>11/13—</b><br><b>Chamber</b><br><b>Business</b><br><b>Expo Mixer,</b><br><b>Elks Lodge</b><br><b>5:00 PM</b>   | 5<br><u>Early Morning Edition</u><br><u>Leads,</u><br><b>7:30 AM</b>  | 6<br><b>Monthly Chamber</b><br><b>Breakfast</b><br><b>El Rancho Brewing</b><br><b>Company 7:30 AM</b>  | 7<br><b>Ambassador Happy</b><br><b>Hour—Lariat Lodge</b><br><b>Brewery 4:30 PM</b>   | 8<br><b>Ribbon Cutting</b><br><b>- NeurOptimize</b><br><b>12:00 PM</b>  |
|  | 12<br><u>Early Morning Edition</u><br><u>Leads,</u><br><b>7:30 AM</b>   | 13<br><u>Women 2 Women</u><br><u>Leads, Information</u><br><u>Breakfast</u><br><b>Meadow Creek Design</b><br><b>Studio, 8:30 AM</b><br><br><b>Chamber Business</b><br><b>Expo Mixer—</b><br><b>Evergreen Elks Lodge</b><br><b>5:00pm</b> | 14<br><u>Day Break B2B</u><br><u>Leads, Windermere</u><br><u>Conference Room,</u><br><b>8:00AM</b><br><u>Lunch Bunch Leads,</u><br><u>Tuscany Tavern,</u><br><b>11:30 AM</b> | 15<br><b>Ribbon Cutting -</b><br><b>Paul Davis Restoration</b><br><b>of the Front Range</b><br><b>12:00 PM</b>                            |

### SAVE THE DATES!

11/6—  
Monthly  
Chamber  
Breakfast,  
El Rancho  
Brewing  
Company  
7:30 AM

11/13—  
Women 2  
Women  
Leads  
Group  
Information  
Breakfast,  
Meadow  
Creek  
Design  
Studio—  
Bergen Park  
8:30 AM

11/13—  
Chamber  
Business  
Expo Mixer,  
Elks Lodge  
5:00 PM