

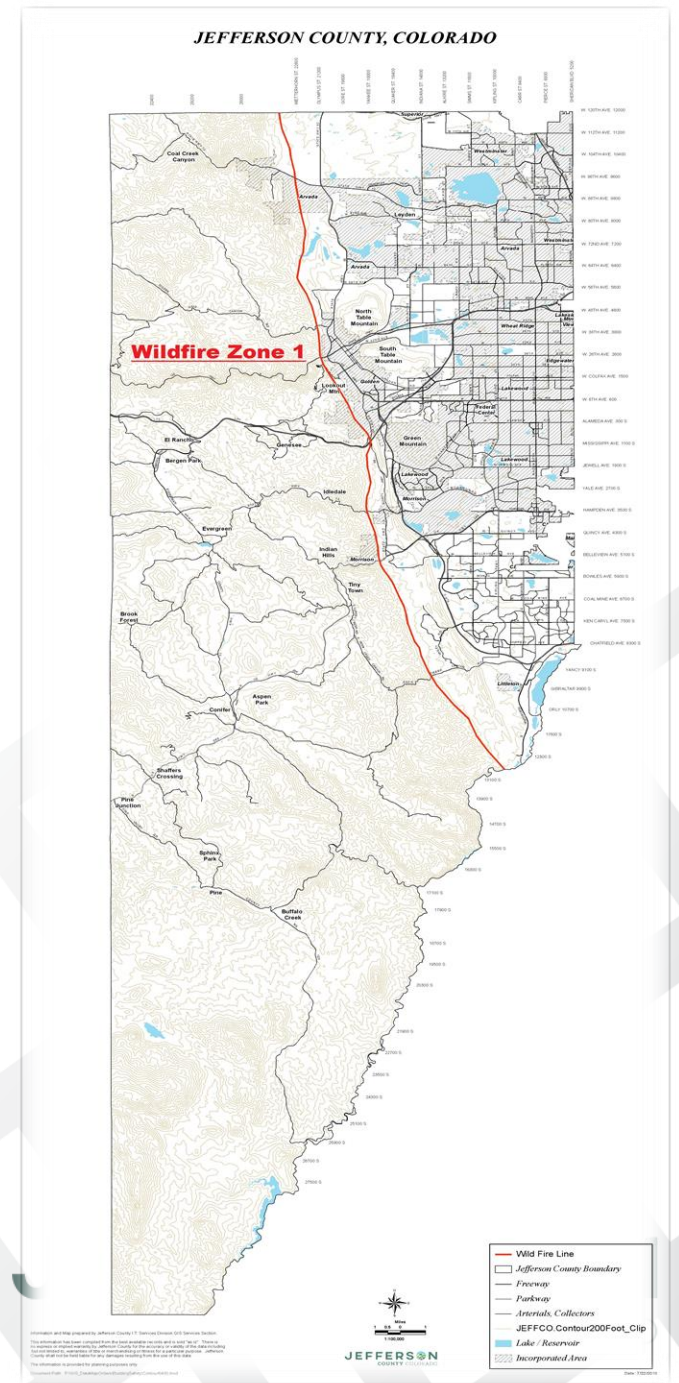


Jeffco Wildfire Risk Reduction Task Force
Lesley Dahlkemper, Jefferson County Commissioner

Evergreen Area Chamber of Commerce || Feb. 5, 2020

Jefferson County Wildfire Risks

- More than two-thirds of Jeffco is in the wildland-urban interface (WUI).
- Risk of property loss to wildfire:
 - Evergreen & Conifer: #1 in Colorado and in the top 10 nationally.
 - Paradise, CA, was #1 nationally.



Jefferson County Wildfire Risks

“We’re unsure how many people we can evacuate quickly during a fast-moving wildfire due to the population of some areas and the narrow roads.”

– *Evergreen Fire Chief Mike Weege*

Impact of 100,000-acre wildfire in west Jeffco:

- 10,000 homes in the fire footprint
- 100 businesses destroyed
- 60,000 people evacuated
- \$5-10 billion in losses
- \$250 million in direct and indirect costs

Source: Jeffco Wildfire Study Session, May 2019



Some of Jeffco's Challenges:

- Increase in emergency calls as residents age
- Greater challenges mitigating property (fixed incomes, increased costs)
- Decrease in availability of volunteer firefighters from local communities
- Declining resources



Jeffco Wildfire Risk Reduction Task Force

- **30+ stakeholders:** fire rescue, county leaders (Open Space, Planning & Zoning, Sheriff's Office, Public Affairs, etc.), community, business, forestry and more.
- **Meetings:** Monthly, 90-minute meetings on the third Thurs. from 2-3:30 p.m. at Jeffco Admin Building. Open to the public.
- **Timeline:** Recs due to County Commissioners in November 2020.

Task Force: Priorities in 2019-2020

- ***Revenue streams*** – impact of TABOR; exploration of a fire authority; what can we learn from other counties with dedicated wildfire mitigation resources and what would it look like in Jeffco; grants?



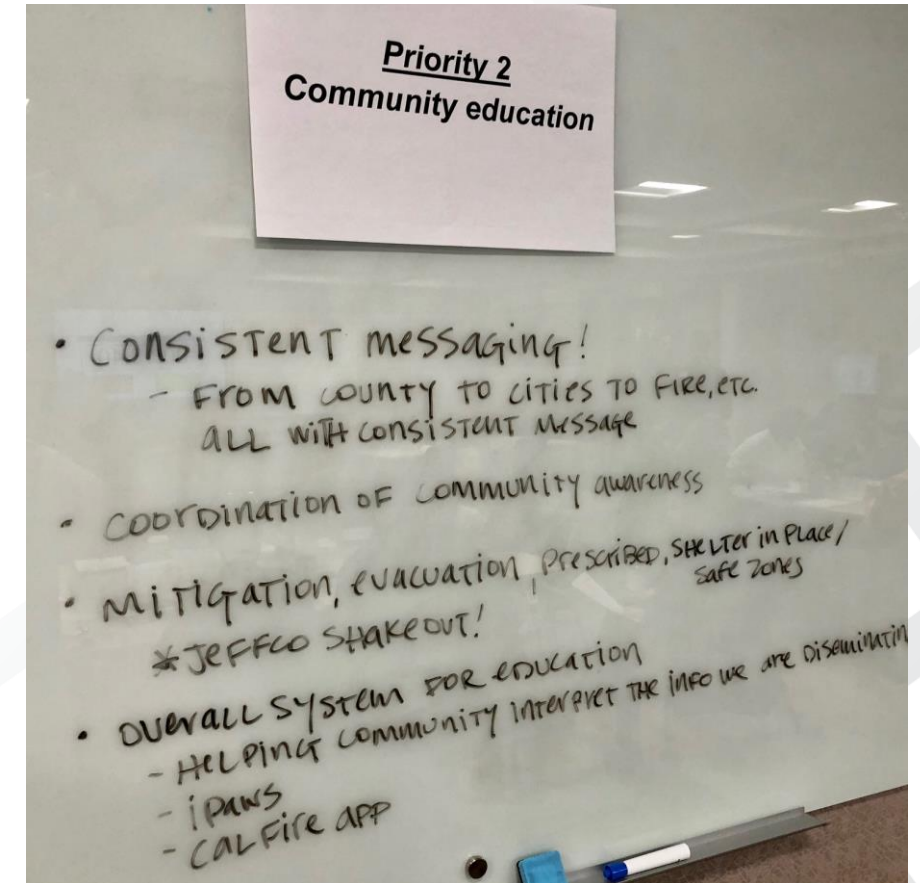
Task Force: Priorities in 2019-2020

- ***Wildfire mitigation*** – what's working well (local fire dist. efforts, Jeffco Open Space); gaps in efforts; best practices; other effective county policies; future of county's slash program & budget cuts; role of business to address wood Utilization and removal.

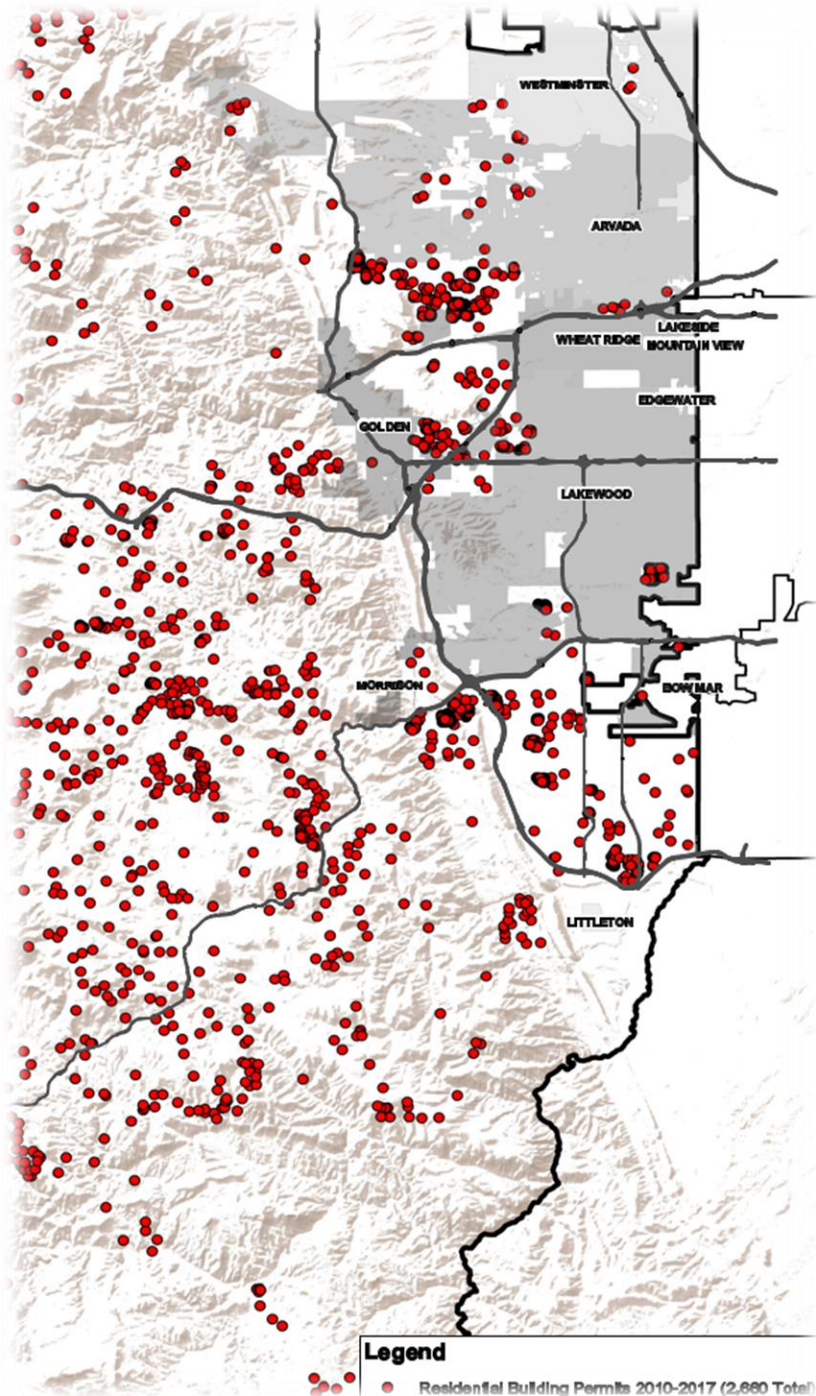


Task Force: Priorities in 2019-2020

- ***Community awareness efforts*** – what efforts are currently underway and where; what are the results; and where can we enhance community awareness regarding wildfire risk reduction efforts?



Jefferson County: Development in WUI



← Residential building permits
issued in 2010-17

2019 Efforts: Planning and Zoning

- **Hardening homes.** Adopted Appendix Z to the building and residential codes to harden new homes (adopted on 11/5)
- **Sign policy.** Amended the County's sign policy to allow for signs in the County right-of-way that raise awareness of fire danger
- **ROWS.** Drafting a memorandum of understanding to partner with Evergreen Fire Rescue for mitigation of fire risks within County right-of-way

2019 Efforts: Mitigation

Jeffco Open Space

- 48,000 acres of open space (16,000 acres are forested land)
- \$2,500 to mitigate one acre (mechanical thinning)
- 250+ acres slated for mitigation in 2019-23; \$1M budgeted
- **Where:** Flying J Ranch, Alderfer, Reynolds, Meyer Ranch
- **Partners:** Denver Mountain Parks, CO State Forest Service, Evergreen Fire Protection Dist., Elk Creek Fire Dist., Jefferson Conservation Dist., private landowners

2019 Efforts: Mitigation

Flying J Ranch Park – Before and After – 150 acres



2019 Efforts

- Jeffco Sheriff's Emergency Management Team and Mitigation Education
- Jeffco Slash Program

