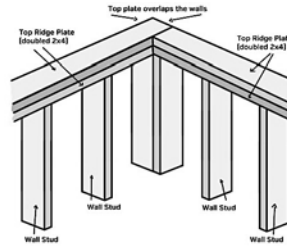
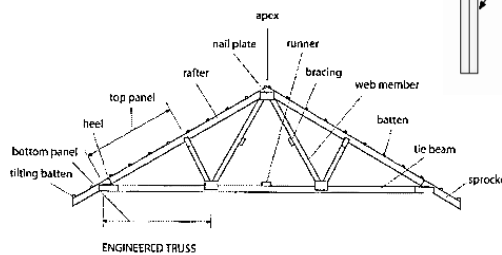
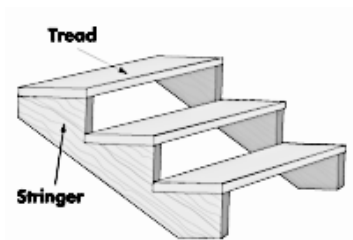
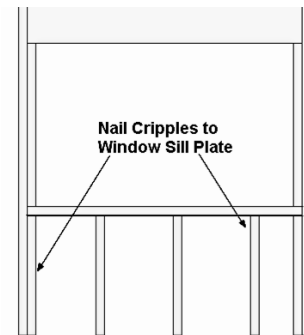


Types of Angles Quiz

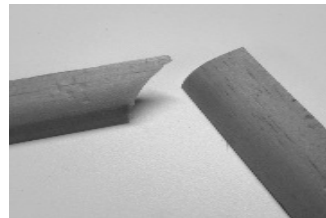
1. The angles formed when studs are nailed correctly to the top and bottom plates of a wall are
- acute angles
 - right angles
 - obtuse angles
 - supplementary angles



2. One example of an obtuse angle is the angle formed
- by two sides of a gable roof.
 - by a stud nailed to a sill plate.
 - by two walls joined at a corner
 - by a stair stringer and the floor underneath it.



3. An acute angle may be formed by the
- top of a roof truss.
 - coped end of molding
 - riser and tread on a stair
 - intersection of two walls



4. Two angles are complementary when their sum equals
- 180 degrees
 - 120 degrees
 - 90 degrees
 - 45 degrees
5. A 45-degree angle to be cut for a miter joint is a(n)
- acute angle
 - right angle.
 - obtuse angle
 - complementary angle.