

FEDEX CORPORATION GLOBALLY



69.7 Billion
FY19 Annual Revenue



679 aircrafts
> 650 airports
served worldwide



> 180K
Worldwide ground fleet



> 475K
Employees worldwide



> 220 countries
and territories



Air and Ocean
Freight Forwarding Services



> 15M
Shipments each business day
(avg. daily volume)



> 65K
Unique **fedex.com** visitors
monthly



> 250M
Package-status tracking
requests daily

FedEx Express Overview



Worldwide Headquarters



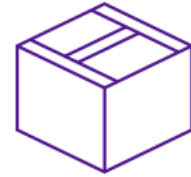
Regional Headquarters: Hoofddorp, The Netherlands;
Hong Kong, China; Toronto, Ontario; Brussels, Belgium;
Dubai, United Arab Emirates; and Miami, Florida



\$37.3 billion
FY19 annual revenue



>245K
Team members



>6M
Avg. daily package volume*



>85K
Motorized vehicles

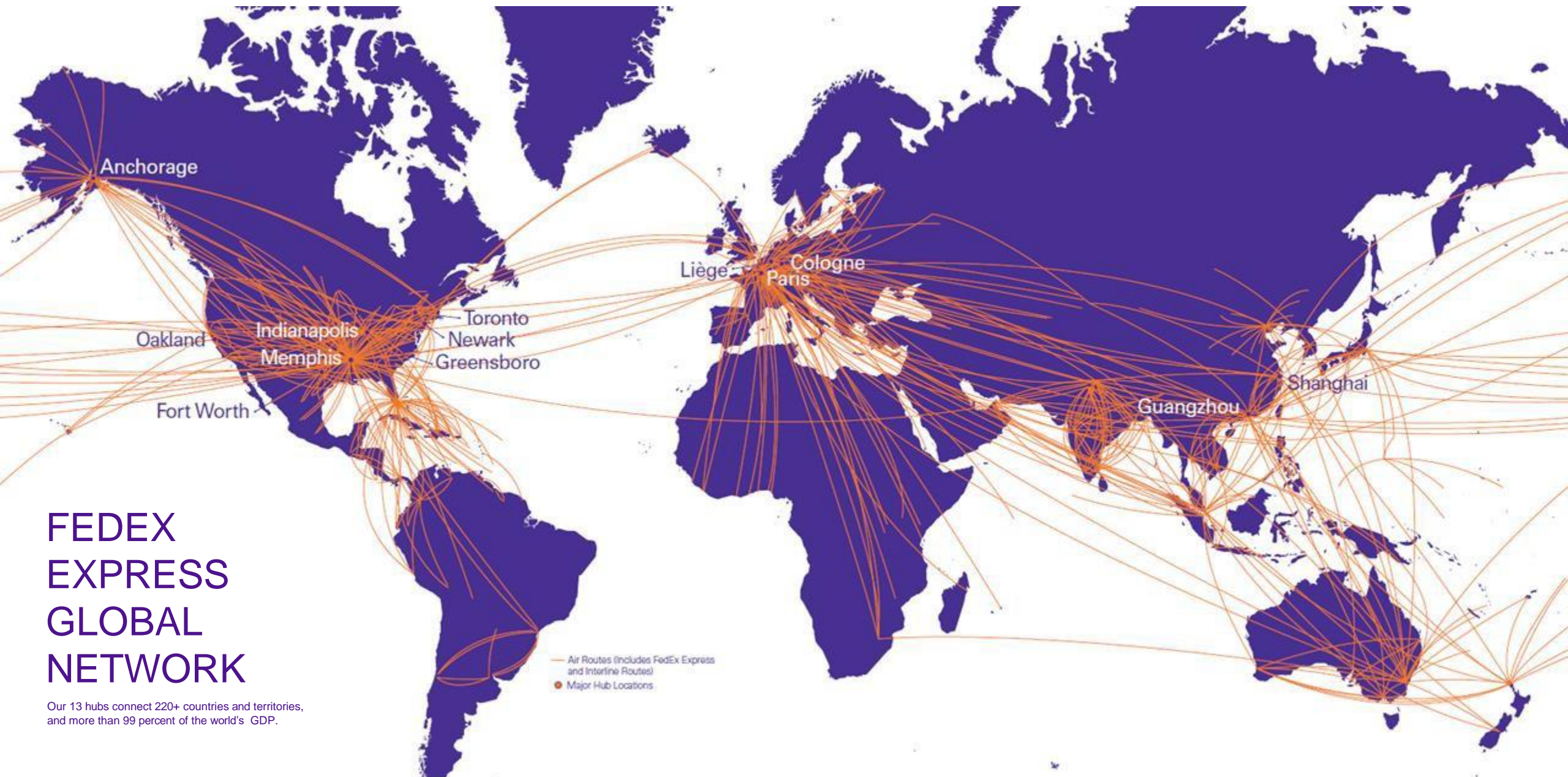


>28M
Avg. daily
pounds of freight*



679
Aircraft at >650 airports
worldwide

* Based on 255 operating days per year

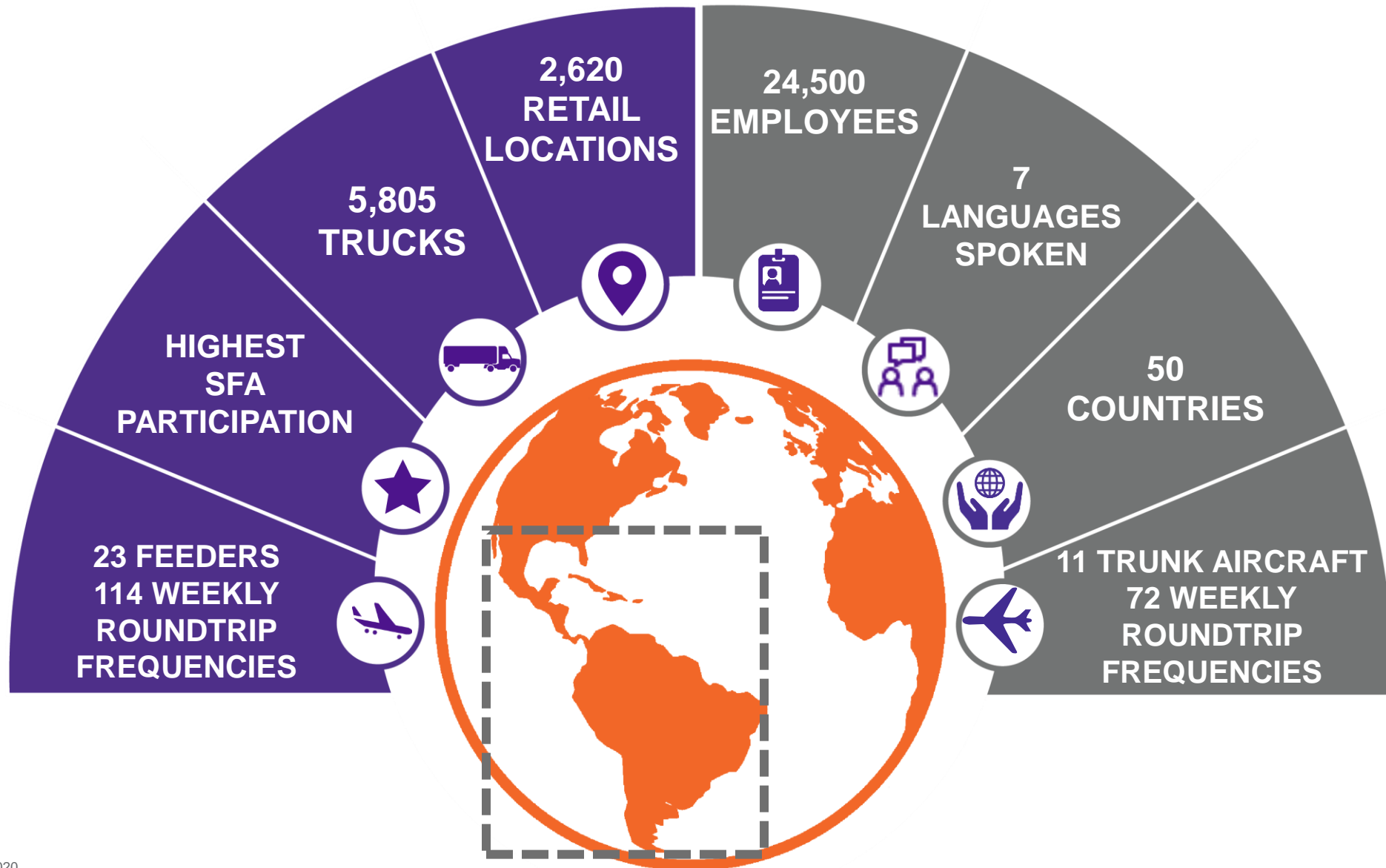


FEDEX EXPRESS GLOBAL NETWORK

Our 13 hubs connect 220+ countries and territories,
and more than 99 percent of the world's GDP.

— Air Routes (includes FedEx Express and Interline Routes)
● Major Hub Locations

LAC Size & Scope of Operations



Customer Experience Operations Organization Latin America & Caribbean Division

