

A Bungalow Gem | Residential Interior \$100,001 to \$250,000

This timeless CRAFTSMAN-STYLE FIRST FLOOR RENOVATION features a highly functional kitchen, open floorplan, congruent design details, and amplified natural light.

CLIENT OBJECTIVES

Increase EFFICIENCY and counterspace in their small kitchen

Open the main level to create BETTER FLOW from the back entry to the front of the house

The project included a full kitchen remodel, a fully renovated staircase, as well as new casework and cabinetry in the dining room.

While the architectural details are what make the first floor of this 1920's bungalow open and airy, the intentional use of COLOR, DETAIL, and LIGHT elevates the design.

The result is a welcoming space, fit for a modern lifestyle and true to the original architectural style of the home.



NARI MN 2022 COTY AWARDS, CATEGORY 12

To let the light flow, we reconfigured the staircase.



WIDER OPENING

An unnecessary wall on the south side of the staircase blocked most of the light coming from the kitchen window. A WIDER OPENING lets light flow from the kitchen to the living room.

VINTAGE STYLE & DETAIL

Except for the original framing, the staircase is new. A beam was added where the stair wall was, allowing us to OPEN THE STAIRWAY to the kitchen.

The overall style is consistent with the original. Details, like the RECESSED PANELS ON THE NEWEL POSTS, were added to create cohesiveness with the kitchen and adjacent dining and living areas.

REINTERPRETING THE ORIGINAL

Nº 2 of 9

The light from the south-facing kitchen window permeates the first floor.

FUNCTIONALITY

The WIDENING OF THE CASED OPENING between the kitchen and dining room allows for the south-facing light to make an impact in both areas. Even with the inclusion of the peninsula, the passageway helps traffic flow more naturally.

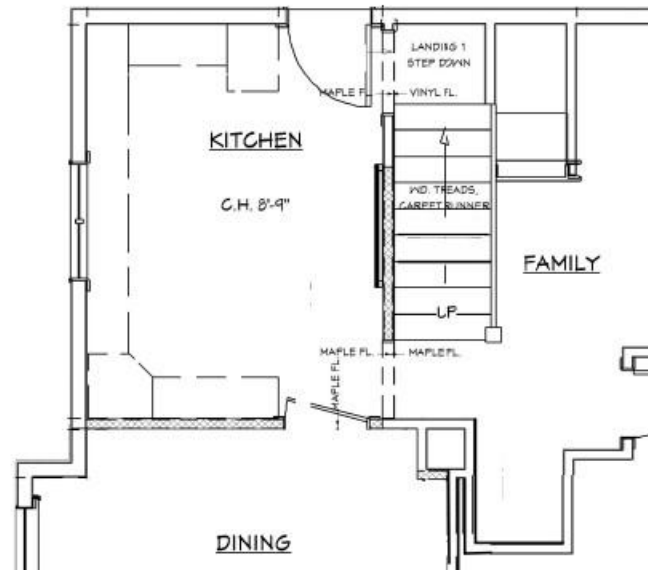
AMPLE LIGHTING fills both rooms. The kitchen has 6 dimmable wafer lights and a central pendant light over the island. The dining room has a dimmable six-light chandelier directly above the dining room table.



MAIN LEVEL COHESION

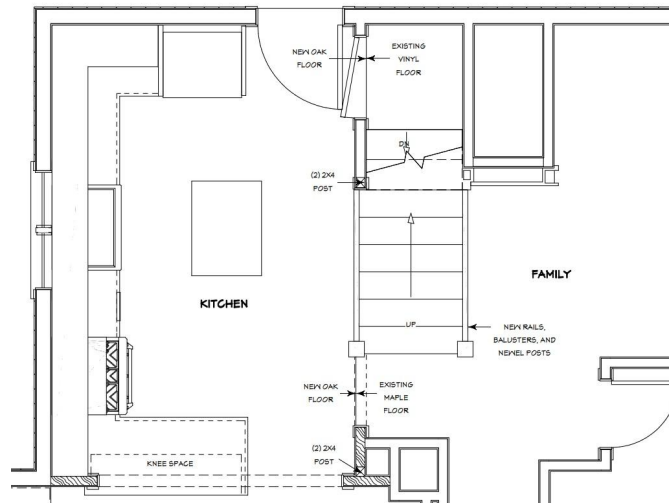
Nº 3 of 9

The space was planned with an emphasis on natural light in mind.



BRINGING IN THE LIGHT

Widening the openings between the staircase and the dining room was a crucial part of achieving our clients' goals, although a bit challenging. The staircase required extensive designing to ensure it was visually pleasing and structurally sound after removing a large portion of the staircase wall.



DESIGN PHASE

Nº 4 of 9

The newly remodeled space is significantly more functional, with ease-of-use a priority in the kitchen.

FUNCTIONAL FEATURES

The kitchen cabinets feature **SOFT-CLOSE FUNCTIONALITY** on all the doors and drawers. This allows quicker and more efficient cooking without excess noise.

We included a **SLENDER ISLAND** in the new design for added prep space and storage while maintaining a roomy walkthrough to the dining area.

The sleek range hood not only looks beautiful above the Wolf range, but it allows for **MORE STORAGE** in the cabinetry directly above.

NEW CABINETRY IN THE DINING ROOM offers display and storage for the homeowners' favorite pieces.

A **BUILT-IN WINE RACK** in the kitchen provides more options for entertaining.



CREATIVE PROBLEM-SOLVING

Because we wanted an extra wide counter area at the peninsula but also wanted to maintain proportionate cabinet sizing, we needed to reinforce the countertop slab. We added a steel plate between the cabinet boxes and the countertop to ensure durability of installation. The countertop is polished quartzite that is easy to maintain.

FUNCTIONAL DETAILS

New flooring and a cohesive color palette make this a seamless space.

AESTHETICS

The TRIM PROFILE is consistent from the rear entry to the front living room.

WAINSCOTING in the dining room connects the dining room and kitchen cabinets and adds an element of traditional richness.

Wall and trim colors are carried through the main level. The divided lite element is repeated through all three rooms. The furniture toe detail in the dining room cabinetry matches the cabinetry on the kitchen peninsula. The addition of wainscot in the dining room creates visual balance with the fresh, white kitchen.

BLENDING NEW AND OLD

The NEW OAK FLOORING in the kitchen was toothed into the existing dining room floor. All the flooring on the main level was refinished for a cohesive and elongated appearance.



RHYTHM & HUES

Nº 6 of 9

The new cabinetry adds height to the room, and the stream of light bounces off (and through!) the finishes.



BEFORE

OBJECTIVE + AESTHETICS

The COLOR PALETTE chosen includes primarily soft, warm whites. This helps the LIGHT reflect off the cabinets, countertop, trim, farmhouse sink, and backsplash to create a brighter, airier feel. The use of glass in the cabinet doors as well as the primary light fixture allow the light to pass through, adding to the openness of the room.



POLISHED NICKEL DETAILS in the faucet and knobs assist in moving the light around, while the contrasting drawer pulls on the lower cabinets add visual interest.

WHITE & BRIGHT

Nº 7 of 9

This project is all about the details – and our team got them just right.



CRAFTSMANSHIP

The cabinet crown in the dining room LINES UP PERFECTLY with the top of the cased opening and window. The carefully matched trim details show up throughout these three adjacent rooms.

Kitchen and dining room cabinetry features full-inset doors and drawers, as well as soft-close hinges and full-extension drawer glides. There's a sense of SYMMETRY throughout, thanks to the meticulous work of the carpenters and cabinet-makers.



INTRICATE TRIM WORK

Nº 8 of 9

We are thrilled to have accomplished our clients' goals while providing them with a timeless space that will last for generations.



BEAUTY, FUNCTION, AND QUALITY are the three goals we aim to achieve on every project, and this 1920's bungalow gem is no exception. Our clients can now move through the space naturally and enjoy the company of their family and friends anywhere in the main level.

A TRUE GEM

Nº 9 of 9