



Design Statement

“Can you make a kitchen that feels like this picture?” they asked, showing the designer a print of an energetic, colorful, impressionistic painting.

The previous kitchen might have been eye-catching and cool when first built in 1965, but decades later, it was a worn-out failure. It did not serve a busy, professional family of four who love to cook and entertain. Although a practical, functional design was of paramount importance, they also wanted “a kitchen experience” that looked and felt like “them”. This new kitchen needed to honor the rest of the home’s design and really showcase Mid-Century Modern flair.

Within the semi-open floor plan, the kitchen and dining room took up a great deal of the main floor, yet the kitchen itself was limited, cut up and had no room to cook, store items or move about without risk of bumping into a corner or sending a small appliance crashing to the floor. Much of the storage was hard-to-access corner cabinets. Cabinets and drawers were failing. The sink area was cramped. Pulling out the often-used heavy cast iron pots from a pile in the bottom drawer would cause flare-ups in one of the homeowner’s arthritis. It was actually quite scary to get large items down from upper cabinets.

The key to fixing the kitchen plan was to expand into the great room and take over an awkward, underused sitting area. A long island, oriented against the long axis of the great room, connects the kitchen function while defining the dining space. Seating is provided and circulation improved. The appliances were re-positioned to take better advantage of the new layout and offer the right clearances and adjacencies. Even an out-of-site inside corner was used to great advantage for housing the small appliances. Color and pattern keep the house rooted in the mid-century period while giving it a lively feel.

The picture shown at the start of the design process really did inspire the final palette – a palette that blends perfectly with the rest of the Mid-Century Modern home.

It had been hard to create a joyous happy hour at the bar with its heavy, ominous black lacquer cabinets and smoky mirrors. The old bar was metamorphosed into a new one of whimsy and wonderful function. It brightens the entire space. The new bar functions beautifully with all the classic features – beverage cooler, sink, ice drawer, glass and liquor storage – plus has cabinetry to house specialty, seasonally-used equipment, in what would have been dead space. Fun and hard-working – what could be better.

Throughout the project special attention was given to make sure the materials are as hard-working and practical as they are visually pleasing: solid surface counters, tile, and flat front cabinets – tough, yet easy to clean. Lighting choices include: delicately recessed lights to replace the clunky track lighting. Task lighting for all countertops provides light where most needed. Features such as a large double sink in the island makes cleaning the large specialty cookware a breeze, and the second prep sink near the stove means many hands can make light work of big meals.

Creating the clean, modern look with the high-polished lacquer doors that have tight fit & finish is very difficult to achieve. There is no trim to hide mistakes. It demonstrates the superb craftsmanship and attention to detail executed throughout the project. Great attention was spent fixing the slant of the original rooms - a result of the house settling to one side. Having the new, clean lines upset by a lopsided ceiling plane simply wouldn’t do.

This family loves showing off both the incredibly efficient function and the visual “Wow” of the new kitchen and bar. The result fits perfectly with the homeowners unique, personal style, and the rooms now exude the bright, warm, fun and modern feel they desired. It is perfect for big entertaining - or just gathering together as a family..

Highlights

Client Needs

- Better circulation - no peninsula blocking traffic
- More storage space, and smart storage solutions - a place for everything
- More useable surface space
- New look - modern, clean, updated
- Solution for displaying cookware
- Space to accommodate larger range
- Updates to bar
- Better entry into kitchen
- Larger sink
- More prep space
- Create a "Kitchen Experience"

Functionality

- Great solutions for both storing and displaying cookware
- New, hardworking appliances in appropriate arrangement and with the right spaces adjacent
- Everything has its place - a key need
- Great circulation – Easy entering and exiting spaces from all sides - no blockages or traffic jams
- Space for family and friends to cook together
- Every new area is extremely high-functioning
- Ample pantry with custom storage to keep large items such as brooms and stools nearby, but out of sight
- Great lighting, including task and desired low-night lighting for navigating the space post dinner

Aesthetic

- Warm and bright
- Fun, unique "wow" look
- Stay true to the era of the home
- Modern
- Clean, sleek and carefully crafted

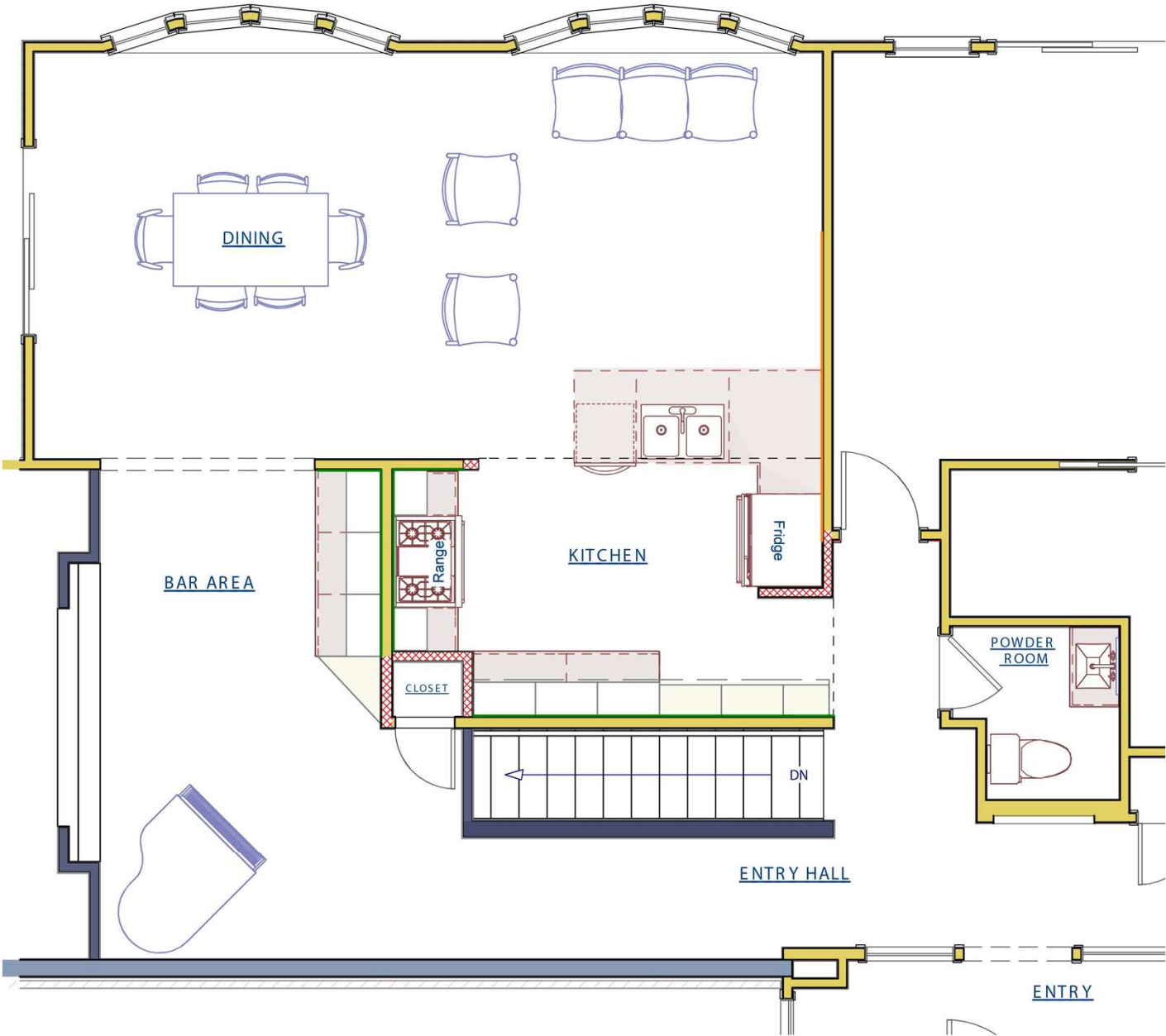
Craftsmanship

- Tight fit and finish for all cabinetry
- Repair of sagging, skewed structure to make sure the new pieces fit
- Careful new wraps of structural beams to create clean lines on ceiling
- Waterfall edges that combine wood and stone

Features

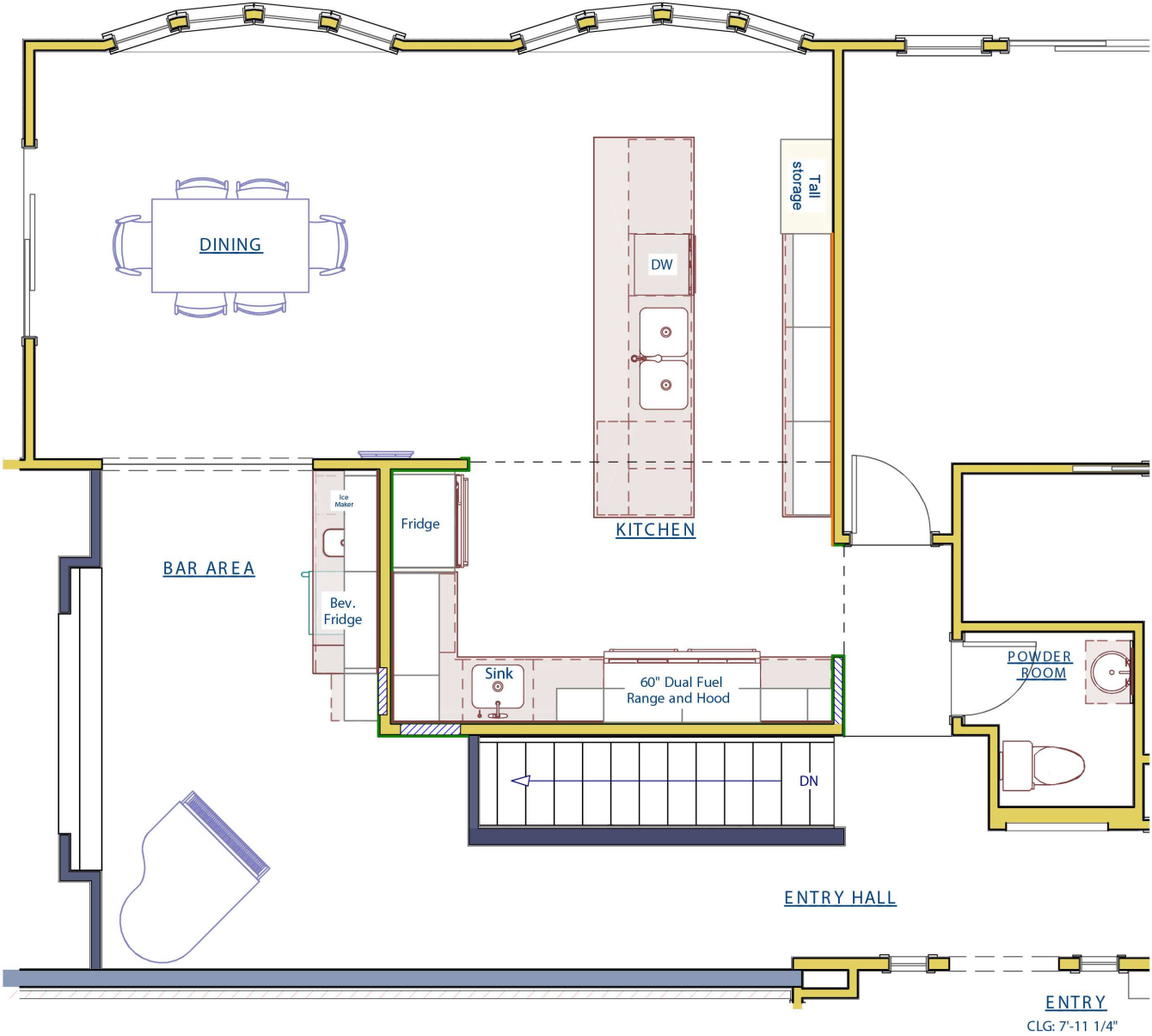
- Detail design drawers to organize and store extensive cookware collection
- Prep sink so multiple cooks can work together
- Large, hardworking island
- Utilization of "wasted space" for storing unwieldy cooking equipment
- Bar area makes entertaining easy
- Lighting options for every mood from party to night light
- 60-inch dual-fuel range and hood - perfect for the homeowners

Before

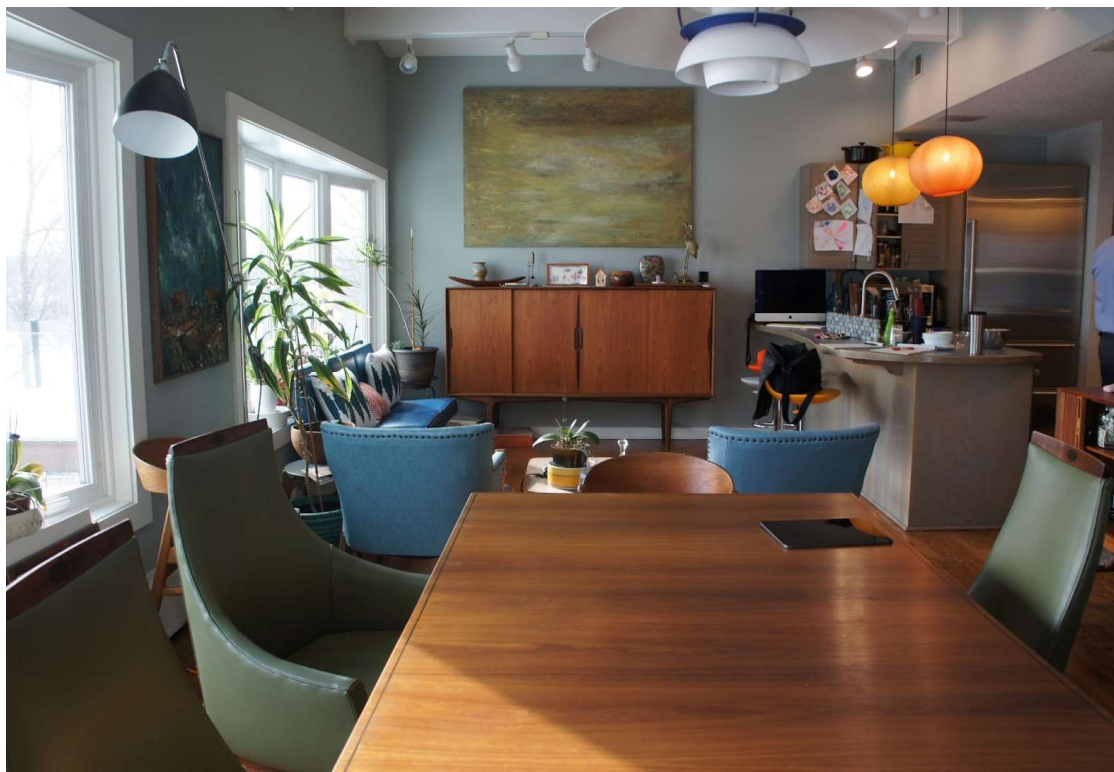


Kitchen - BEFORE
1/4" = 1'-0"

After



Kitchen - AFTER
1/4" = 1'-0"



Before

Before the redesign, the end of the great room contained an odd and hard-to-use sitting area. The peninsula was constantly-cluttered. This space just did not know what it was.

The space that encompassed the kitchen, great room and dining room was quite large, but it was cut up and laid out awkwardly, leaving every area feeling cramped, cluttered and crowded.



Before

The glazed oak cabinetry - though a fresh look when originally installed - had long since become old and tired-looking. It also really gummed up the clean, fresh and modern look the owners wanted to achieve in the home.

The limited counter space is overwhelmed by kitchen tools. For serious cooks and an active family who loves good food, the kitchen had become completely unworkable.

The area around the sink could not support prep or clean up properly; inside corners were wasted opportunities for good storage. The microwave was shoved into a corner by the sink with no other place to keep it.





Before

The range was wedged into a tight alcove. The owners wanted to expand the size of the range to meet cooking needs, but there wasn't enough prep or support space flanking it to accommodate the change.

The homeowners loved to cook, and loved fun kitchen gadgets, but the space made it too difficult to use them, so they were limited in what they could have... or even accept as gifts, with no place to put or keep them!

As it was, there wasn't even a place to keep everyday dishes close at hand in the actual kitchen space. The period sideboard was overflowing.



After

The peninsula function is reoriented into the new, longer island. Not only does this increase the seating and food preparation area, but its shape mirrors the long line of the room itself. Circulation is greatly improved.

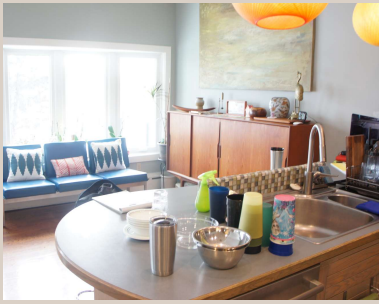
Before



By adjusting the opening between the kitchen and the hallway, space for the new, expanded range was created. The access is much cleaner.



Before



With the expansion of the kitchen space and the new, reoriented island, not only was better casual seating created, but the long dining space now has a focus. The room knows much better what it is.





Before

The bar area felt like a black hole - sucking in light and giving almost nothing back. It was practical but did not reflect the best design of the rest of the home nor the owner's taste.

After

A riot of color, pattern and function, delicately balanced into a new bar area to shout about.





What had been an odd seating area tucked into a tiny space now becomes a hard-working and fanciful island and storage area. Open shelves allow decorative storage for lacquered cookware.



The salt-glazed tile in a bright, natural blue and an eye-popping orange tie the cabinetry color, wood tones and acrylic panels together in a palette that is both bright and warm.

The tile choice references the original period of the home in a way that is bold and whimsical yet refined and practical.



Range becomes a focal point with enough space to prep and lay out cooking supplies. With range location changed there was room to accommodate a 60-inch dual-fuel range and hood - perfect for the homeowners who do a lot of high-heat cooking and needed proper ventilation.

Added prep sink near range to assist with prep efficiency and leave space for multiple family members to multitask and work in the kitchen simultaneously.



Repurposing the tight niche that contained the range and capturing the space from an underused closet opened the space to hold the the built-in fridge along with a busy appliance center.

The tucked-away corner is a perfect spot for the microwave, toaster and other items that need to be easily accessible. Out of view from the dining room and living room – and at hand for daily use.



Before



After

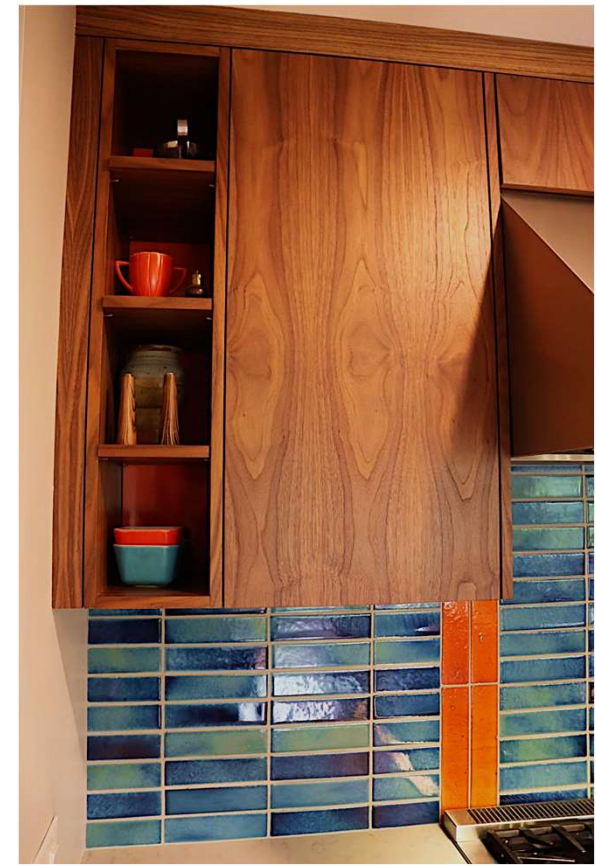


The waterfall edge of the island counter tapers back to lighten the look and reduce toe-stubbing.

It also simultaneously provides additional visual interest on the opposite side of the waterfall and cabinet edge, creating a surprising graphic moment in what would otherwise simply be a basic cabinet panel.

Classic, modern molded plywood bar stools are the perfect accent in both wood tone and form.





ABOVE LEFT & LEFT: Flip up door allows for easy access to cooking tools with enough headroom to leave the cabinet open. This is the perfect marriage of hard-working laboratory-style kitchen with the refined, elegant look the owners wanted.

ABOVE RIGHT: Accent open shelf niche lightens visual weight of cabinet run into corner and provides a moment of interest for displaying period cookware or adding artistic flair.

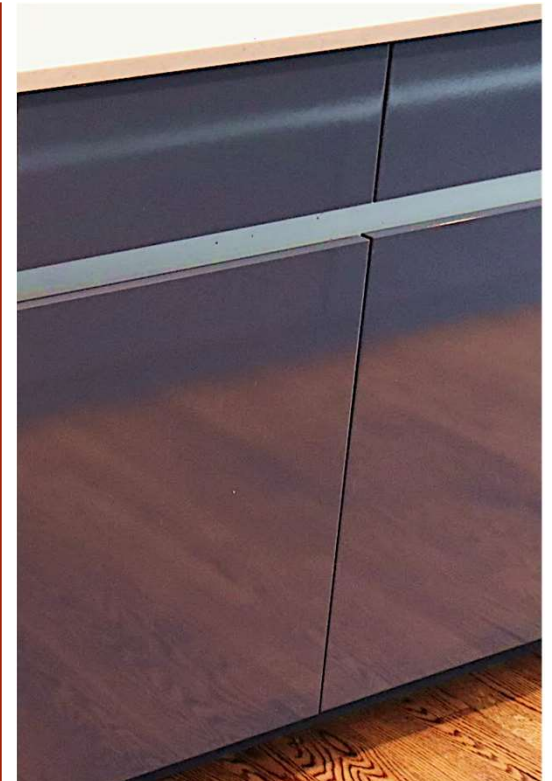


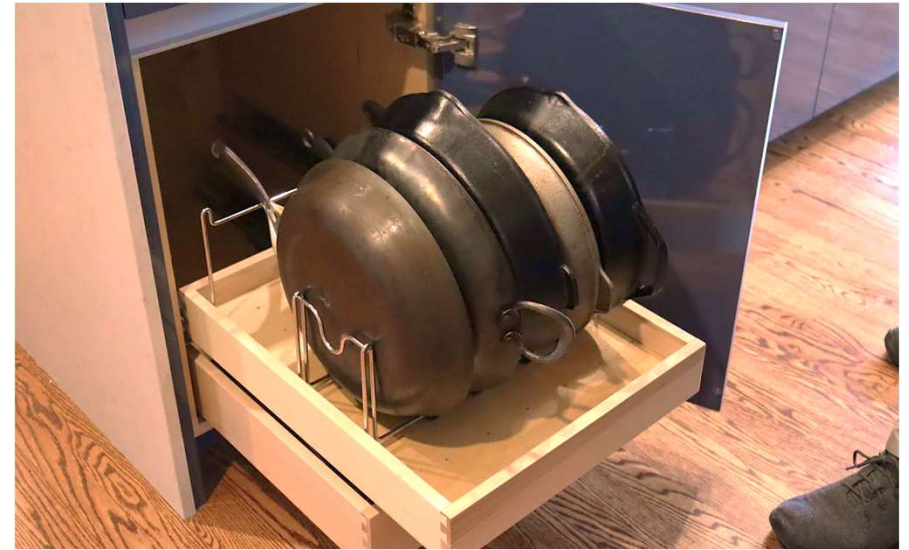
ABOVE: Task lighting is concealed behind a simple valence. This design allows the use of a straightforward, easily-maintained and replaceable LED fixture. (If a light or fixture goes out, fixing it won't be a big deal.)



ABOVE RIGHT & RIGHT: Beveled cabinetry doors eliminate the need for pulls and keep the cabinetry front sleek.

ABOVE LEFT & LEFT: Plug molding is recessed under the countertop edge and the upper cabinets to keep the backsplash clean.



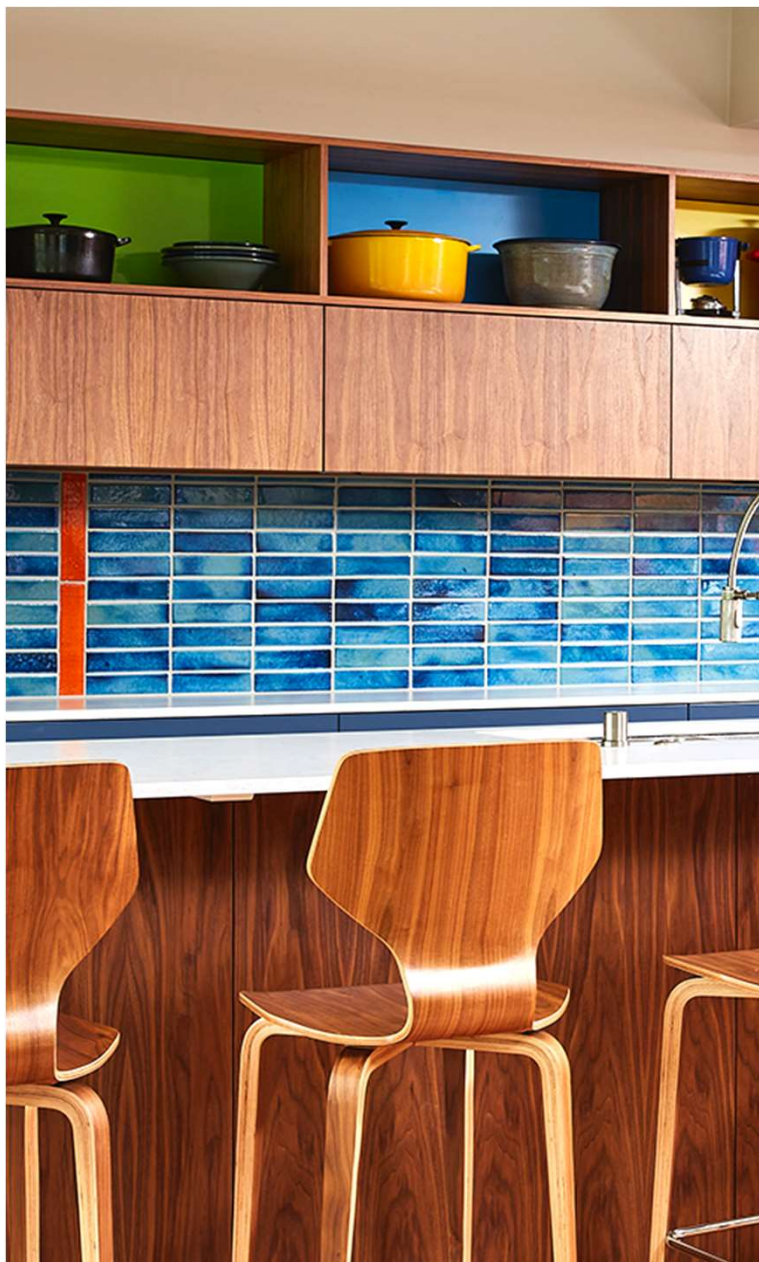


BELOW: No rummaging around to find the right lid - with enough space planned and a great storage system! They are visible and ready to go. Finding necessary lids beforehand was always a daunting task and often proved fruitless.



ABOVE & RIGHT: Drawers and rollout storage were custom designed to fit the diverse cookware that the homeowners use every day. Easily accessible, yet completely hidden and out of the way, means that both function and esthetic are maintained.





The color panels at the back of the shelves are exchangeable so that different color themes can be presented.

Before, ABOVE TOP: Ceiling was cluttered with track lights and popcorn texture.

After, ABOVE: Cleaned up ceiling fits the refined aesthetic much better.



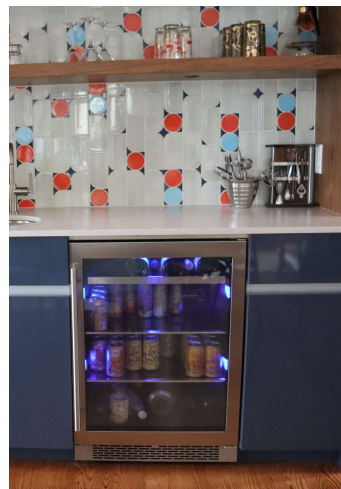
Bar area –
a showstopper
packed with with
function!

BELOW: Using every inch of the space for function, this “rubric's cube” of a cabinet allowed for tidy storage of the unwieldy sausage stuffer in a space that otherwise would have been unused.

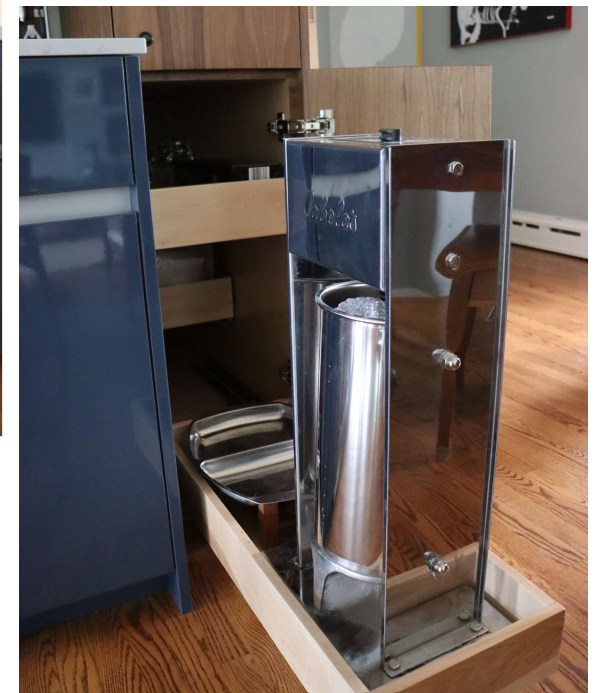


LEFT: The delicate, round bar sink compliments the accent tile.

RIGHT: The beverage fridge was not hidden behind a panel; its simple, honest design fits the overall aesthetic. Lights create a fun accent.



ABOVE: Ice machine is well hidden and right at hand. Ready for evening cocktails or hosting gatherings.

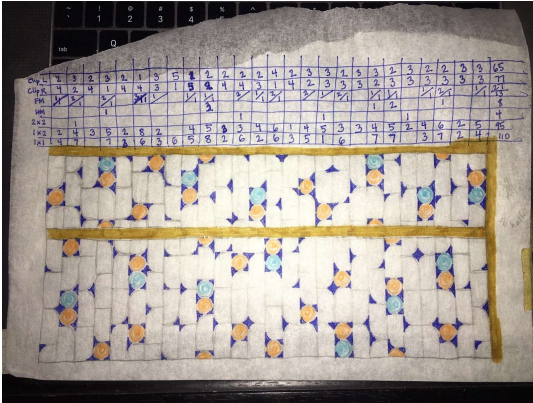




Delicately integrated lighting sets off the gleam of glassware and the upbeat tile design in a bar that combines show with service. It also provides a lovely ambiance during evening entertaining or relaxing in the adjoining piano room.

BELOW: Additional dinning storage in the bar area! With flip-up doors for easy access.





The Intricately planned accent tile arrangement was carefully plotted out. It perfectly matched the owners' vision of period and bold color.

Bringing together the cabinets, shelves and tile demonstrates the attention to detail and fine finish. Everything is crisp.





BOTTOM LEFT:

This colorful painting – purchased at a thrift store and loved by the family for years – provided the initial inspiration for the palette. “Could you make a kitchen that feels like this painting?”

BELOW: The homeowner was so excited about the palette, after the kitchen was completed, she hand-painted kitchen accessories to match!





