



**BASEMENT**  
**\$100,001 - \$250K**

# BACKGROUND & CLIENT NEEDS

Our clients were interested in having their unfinished lower level brought up to the beauty of the rest of their 2006 new build home.

As parents of a few children who were quickly approaching their teen years, **they wanted a space where their children could entertain their friends.**

The space needed to be separated out for gaming, TV time, an exercise room for the whole family and a bedroom and bath for **their oldest** who was itching to have a space to call his own.

The whole lower level was open and ready for our creative breakout of spaces that fit our clients' needs and goals.



# CHALLENGES & SOLUTIONS

Careful consideration was taken to arrange the space so that more than one child and friend could be in the same area and not overlap and fight for ownership of the space. A “wing” of sorts was given to the south end of the space for a child’s bedroom, large bathroom and the family’s exercise space. These were designed to be separate from the large living space so that others could be simultaneously using them.

Previously **lower level windows were not going to be moved. We worked to creatively incorporate them within the media wall**, these now become a beautiful back-up of the space, than the functional and necessary elements that they were intended.

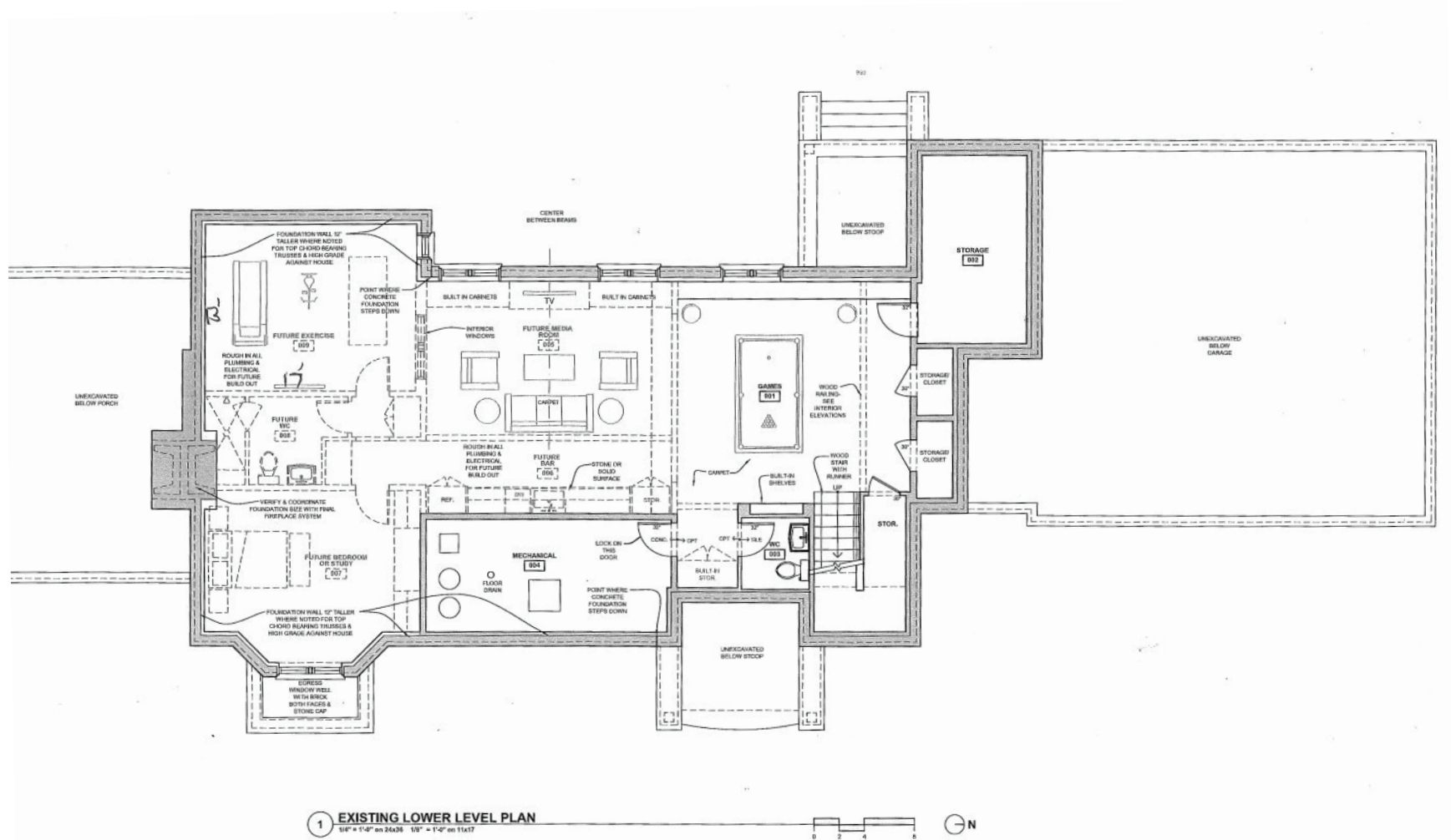
A small creative crawl space for the younger children to play and “get a way from the big kids” was incorporated under the stairs where lots of imagination taking place.

When some lower levels can be dark and uninviting, this space and its window placement AND the creative, but **small, transom window into the exercise room even allows the light to pour in** while family members are getting their muscle time!



# AFTER FLOOR PLAN

(no before plan, due to it being an unfinished, completely open floor plan)



# AFTER PHOTOS

(no befores, due to it being an unfinished, bare space)





## AFTER PHOTOS continued





## AFTER PHOTOS continued



## AFTER PHOTOS continued



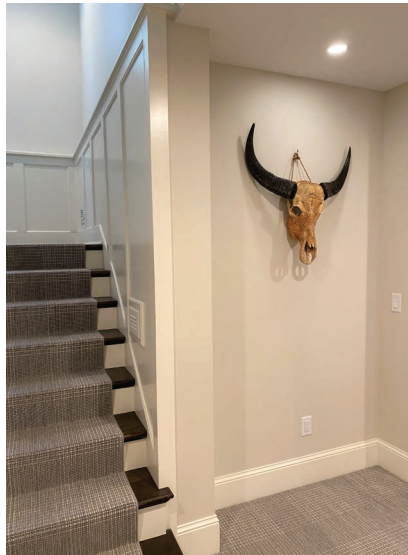
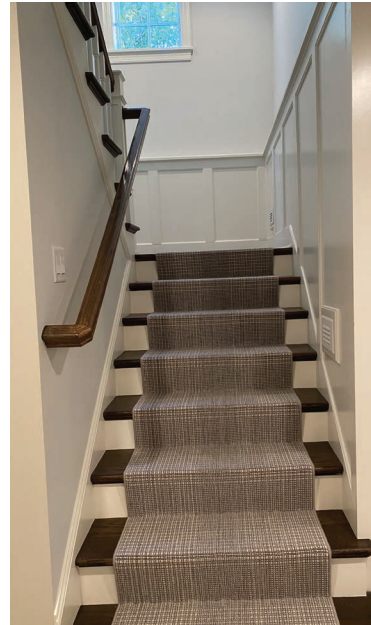


## AFTER PHOTOS continued





# AFTER PHOTOS continued





# CLIENT QUOTE

