

# NARI MINNESOTA - 2022 COTY AWARDS

**PROJECT:** AL DENTE      **CATEGORY:** RESIDENTIAL KITCHEN \$60K TO \$100K

This versatile Hastings, MN kitchen came to be after our clients new at-home way of life, caused by Covid, drove them toward a kitchen remodel sooner than anticipated.

The original kitchen layout was an obstacle to cooking, especially with multiple cooks in the space. A dog-leg island housed the cooktop, and blocked the path between pantry, fridge, and sink. A soffit followed the shape of the island creating a closed-in feeling.

To address the flow, a new peninsula-style island, flush with seating and topped in Blanca Statuarietto Quartz, is in place. A striking pedestal-footed range moved to the back wall accompanied by a regal cherry hood. These pieces are set-off aesthetically by white shaker upper cabinets and taupe elongated high-gloss subway tile. The combination of stained and painted cabinetry brightens the space and ties into the rest of the home’s stained millwork.

Removing all soffits added ceiling height and storage. This move enhanced the spectacular adjoining dining room ceiling installation original to the home. Elongated floor-to-ceiling bay windows frame the space superbly, while LVP flooring in a wide plank proves a durable match for this family

With an eye toward entertaining, a buffet style bank of cabinetry separating the kitchen and great room houses a beverage fridge and bar supplies. The great room fireplace is finished in whitewashed brick with the gas insert softly framed by an arched opening with a simple cherry mantle overhead.

This space provides an al dente balance between aesthetics and function, perfectly encapsulated for the family to enjoy for years to come.



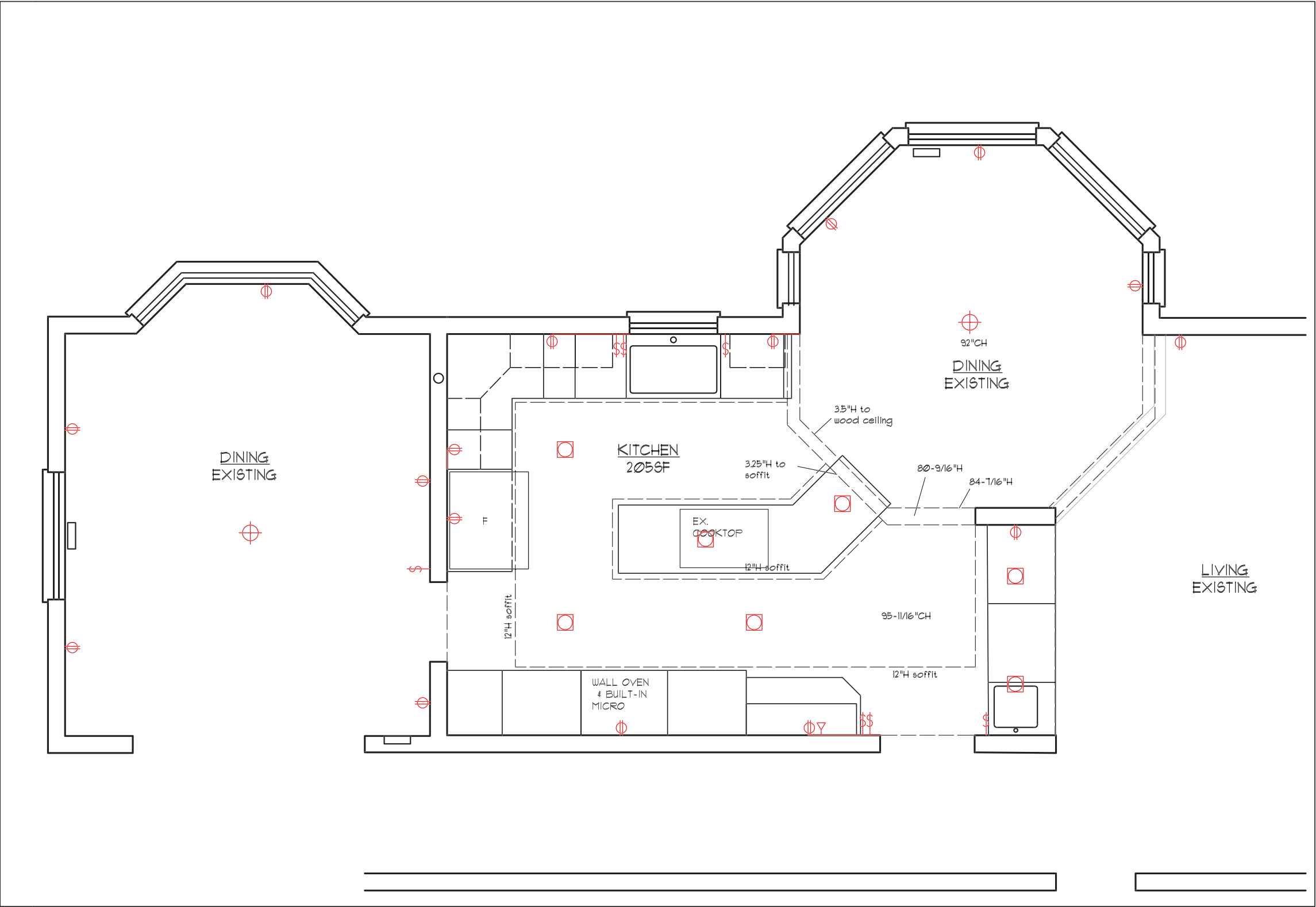
BEFORE PHOTOS



AL DENTE - 2022 NARI MN COTY - RESIDENTIAL KITCHEN \$60K TO \$100K

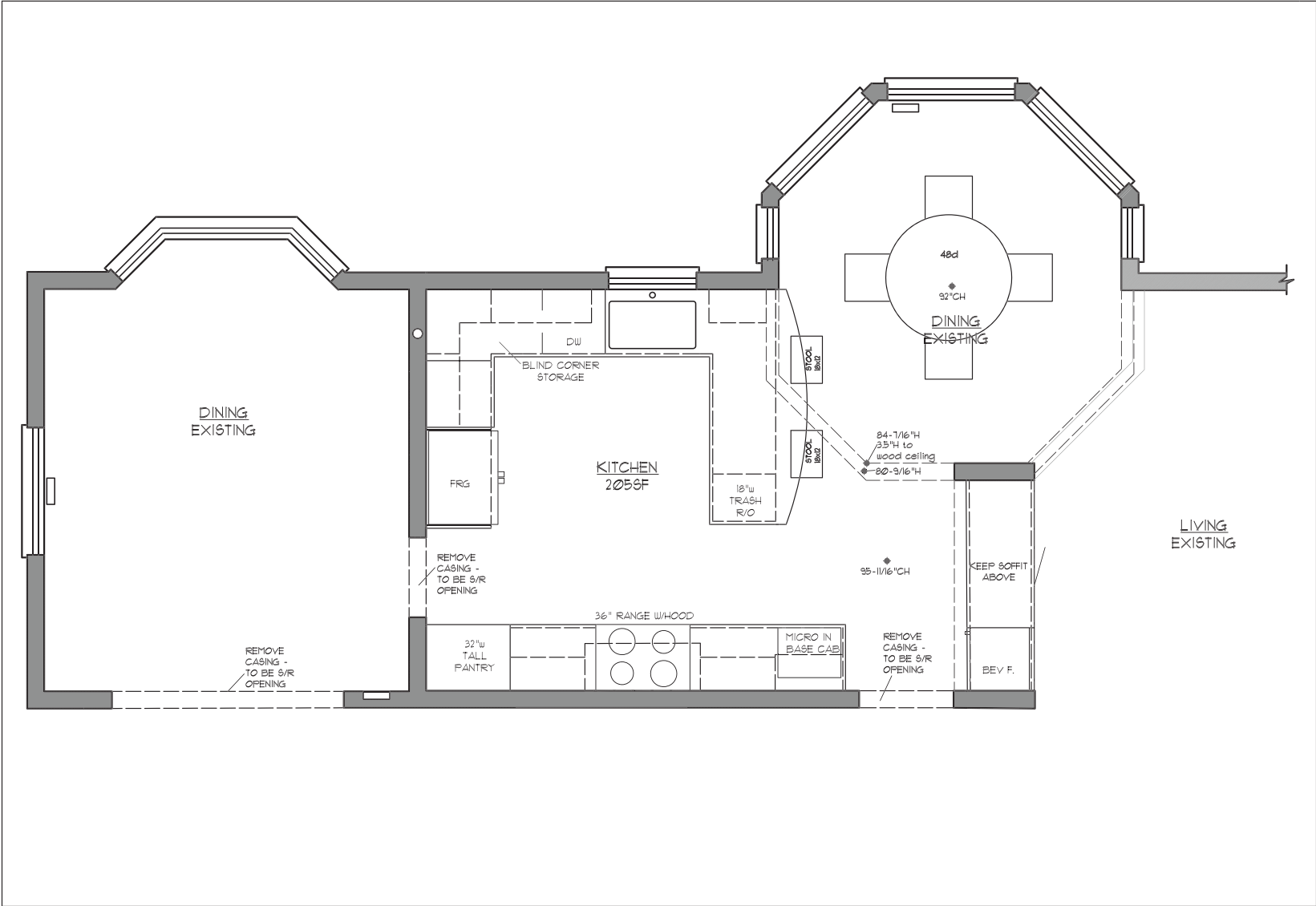
# BEFORE SITE PLAN & CLIENT REQUESTS

- Space plan to support family’s new at-home way of life caused by Covid.
- Ample room and improved flow for multiple cooks.
- More functional island configuration with cooktop relocated for flow and safety.
- Underutilized desk removed.
- Storage increased.
- Elements incorporated with an eye toward entertaining.
- Dining room ceiling installation enhanced.
- Cabinetry blends with the rest of the home’s millwork.

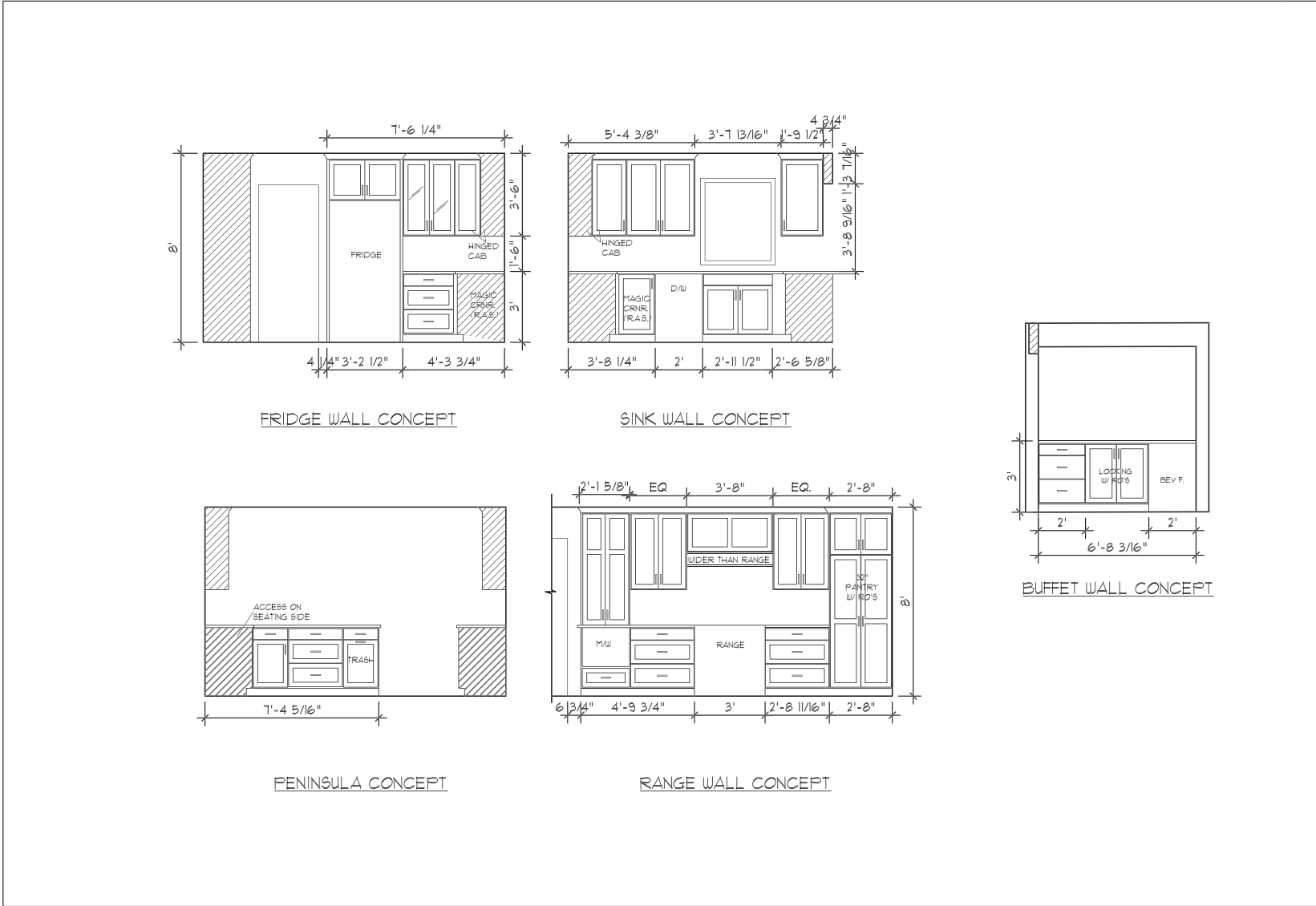


Description:  
KITCHEN AS-BUILT PLAN

AFTER SITE PLAN AND ELEVATION DETAILS



Description:  
FINAL SPACE PLAN



Description:  
ELEVATIONS

BEFORE AND AFTER

Before



After



# PROJECT CHALLENGES

- Space felt cramped with poor flow.
- Limited room to work, especially with multiple cooks in the kitchen.
- Poor work triangle in existing layout with fridge door opening into the side of the island.
- Limited and poorly functioning storage.
- Soffit above the island made the kitchen feel closed in.
- Odd placement and shape of the island.
- Cooktop housed on the island allowed pots and pans to fall off the back.
- Limited seating within the kitchen.
- Light lacking throughout.
- Multiple layers of soffits in the space.
- Informal dining room had a unique ceiling installation to be worked into the design. Transitioning the soffits was an issue.

# CRAFTSMANSHIP / INNOVATIVE METHODS AND USE

- Dining room ceiling installation was highlighted by refinishing it and then surrounding it with elongated bay windows.



# FUNCTIONALITY

-Dog-leg island replaced with peninsula shaped island for better flow.

-Seating added to the island to provide an in-kitchen dining option.

-Cooktop removed from the island and replaced with a range placed on the back wall to improve flow and to eliminate a safety hazard.

-Cabinets include pull-out corner hardware and spice organization.

-Custom-engineered pull-down knife storage rack.

-Soffits removed throughout to increase ceiling height and storage.

-Beverage fridge and buffet style cabinetry included for entertaining.

-LVP wide plank flooring installed for increased durability.



# AESTHETICS

-Bright whites and warm stained woodwork beautifully contrast one another in the space.

-Island topped with sparkling Blanca Statuarietto Quartz.

-Pedestal-footed range accompanied by regal cherry hood.

-Taupe elongated high-gloss subway tile backsplash.

-Blend of stained and white shaker cabinets brighten the space and tie into the rest of the home’s millwork.

-Floor-to-ceiling bay windows frame the unique ceiling installation in the dining room and highlight the dining space.

-Recessed lighting throughout with a black iron pendant light hanging in the dining space.

-Contrasting black hardware and fixtures.

-Whitewashed brick fireplace framed by a softly arched opening with a simple cherry mantle above.

