

cents vs sense ...a palette pleaser with cherry on top



project statement

A busy professional with an abundance of design sense but not an abundance of budget cents knew that some creative design solutions would be essential to making their kitchen shine. Even before purchasing their corner condo with a panoramic view of Downtown Minneapolis, our client began envisioning how to transform the standard early 2000's builder-grade interior into the customized, art-filled oasis of their dreams. Faced with the challenge of a compact living area anchored by an L-shaped kitchen and eat-at island, the space needed to function for dining, living, online working, and entertaining while also providing opportunities for design flourishes and flair.

The layout of the kitchen was compact, yet completely functional with appropriate clearances, workspace, and good flow adjacent to the living area. With a tight budget, it was clear that the existing cabinets and countertops would need to stay and the final aesthetic would need to incorporate the existing finishes in some fashion, making them assets rather than liabilities to the space. To achieve this, we focused our efforts on designing a few discrete dramatic interventions and on curating a complex palette of final finishes to add richness and personalization tying the kitchen and the adjacent spaces into a complementary cohesive whole.



It soon became clear that this was a project of dualities - light/dark, open/closed, masculine/feminine, industrial/art nouveau, existing/new, standard/custom. The kitchen serves not only as the anchor of the multi-purpose living space but also as the dark grounding counterpoint to the two full-height walls of windows overlooking the city. Industrial materials of hot-rolled steel and knurled hardware are juxtaposed against the art nouveau patterned wallpaper. Deep masculine hues of green and black stainless are accented with pops of gold, white, and coral for a softened touch.

The final compilation of fixtures, finishes, form, and functionality was exactly the result our client needed to feel completely at home in their space. They are extremely happy with the results - a creative backdrop for all of their activities from cooking to Zoom calls.

overview

challenges

- tight budget with a need to replace failing appliances
- integration of existing cabinets and countertops
- select custom features that were theme appropriate
- fixtures and hardware to fit existing holes
- final finish color palette to pull it all together
- code compliant plumbing & appliance installation

craftsmanship & ingenuity

- surgical installation of custom-designed, steel shelving between existing cabinets with enough strength to hold dishes and glassware
- LED lighting integration for sink tasks and display
- form-fit steel panels over front of island and existing tile backsplash to minimize visual impact of standard 4" granite splash

aesthetics

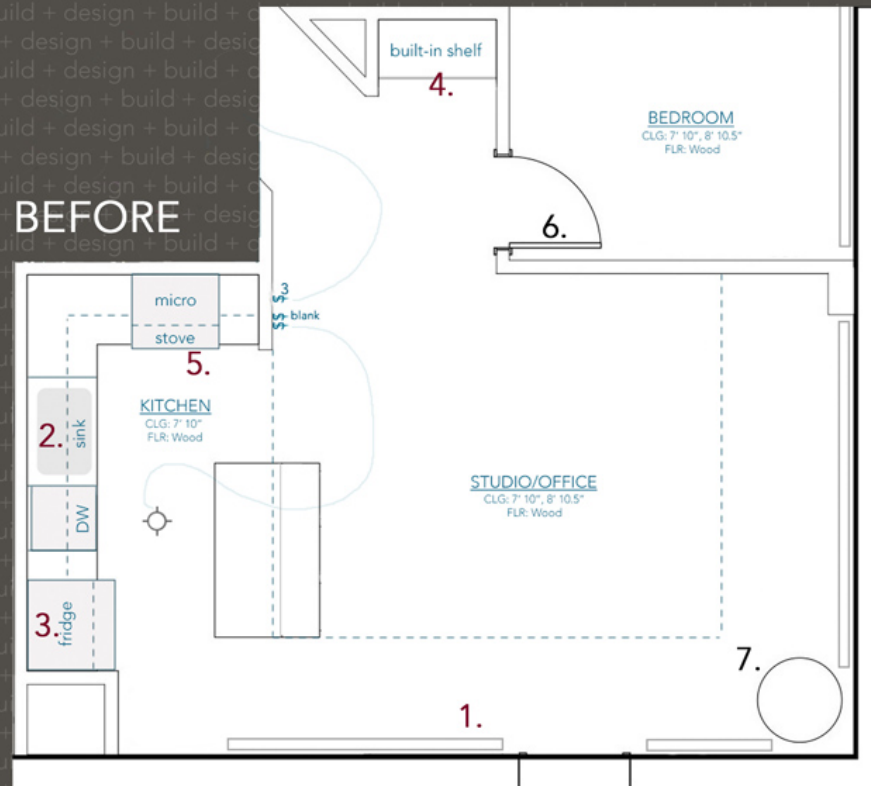
- complex complimentary color palette to enhance existing builder-grade features
- break up over-used materials and finishes with open shelving and rich earthen tones & materials
- incorporate hot-rolled steel, brushed brass, and accents of warm white and reflective glassware.
- think through the color palette as a whole for interest and continuity throughout the unit



before/after plans

BEFORE NOTES:

1. Disconnect and remove un-used electrical heaters taking up floorplan real estate
2. Remove cabinets above sink and fridge
3. Patch and repair drywall, ready for final finishes
4. Remove old shelf with dated hook strap
5. Replace dented/dated appliances with new to fit existing spaces
6. Remove interior hardware and ready for new
7. Ready all surfaces for a fresh coat of paint in new color palette



AFTER



AFTER NOTES:

1. Add (x4) dimmable recessed cans into soffit for more efficient overall illumination
2. Add wallpaper and custom shelving above sink and refrigerator, swap out dated faucet
3. Paint all lower cabinets, including island, replace all cabinet hardware
4. Advise on appropriately sized furnishings and layout
5. Add hot-rolled steel panels over existing backsplash
6. Replace interior hardware to match new palette
7. Add after-market smart storage features into existing cabinetry, add hot-rolled steel panel to back of island

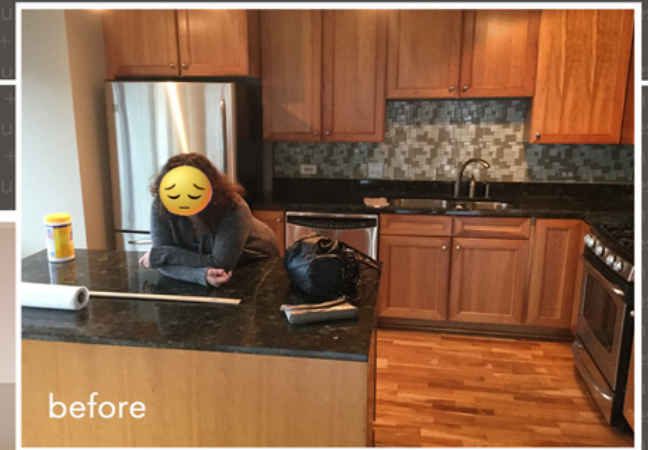
before/after



before



before/after



after

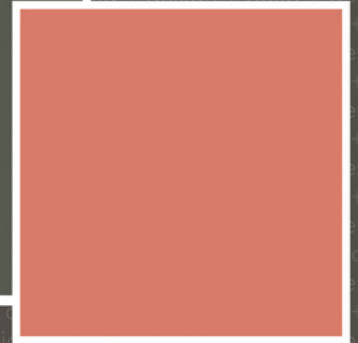
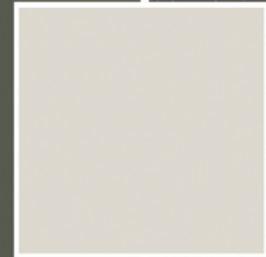
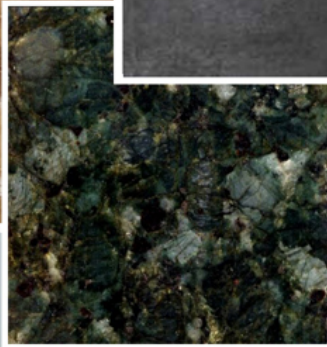


before/after



palette

black stainless - natural cherry wood - knurled brass
aysemmetric patterned floral wallpaper
Verde Butterfly granite - hot-rolled steel - matte black
punchy bursts of color



function

LED tape lighting is integrated into the open shelves above the sink providing both task lighting and display lighting for glassware storage

The hot-rolled steel backsplash offers opportunities for placement of various magnetic shelves and accessories, getting often-used items up off the countertop yet close at hand

Function and beauty meet at the centerpiece of this artful kitchen, a bold state-of-the-art Brizo faucet. With an industrial aesthetic, two-tone finish, and knurled details, it blends seamlessly with the cabinet hardware. The one-touch control and pull-out sprayer make this faucet a functional stand-out for prep and clean-up



details

Existing transitional cherry cabinets are given a modern update with new mixed-metal hardware. Matte black backplates set the stage for bold brass knurled pulls combining industrial and classic details into an artistic, yet functional, composition

Replacing the heavy over-sink cabinet with artisan-made shelves of hot-rolled steel and brushed brass provides a welcome break in the cherry uppers. The vertically-patterned wallpaper draws the eye upward and introduces soft curvaceous forms into the otherwise rectilinear kitchen

A fine design eye ensures that the materials and forms all complement each other. The industrial details of the shelves and hardware balance with the organic wood grain in the cabinets and playful poppies in the wallpaper.

The perfect shade of paint to coordinate with the existing Verde Butterfly granite countertops and cherry uppers was chosen for the base cabinets. The dark earthen green tone gives just the right visual weight to ground the lush palette the client desired. Simple black knurled pulls keep this lower area more sedate allowing the upper areas to shine



cents vs sense ...a palette pleaser with cherry on top

