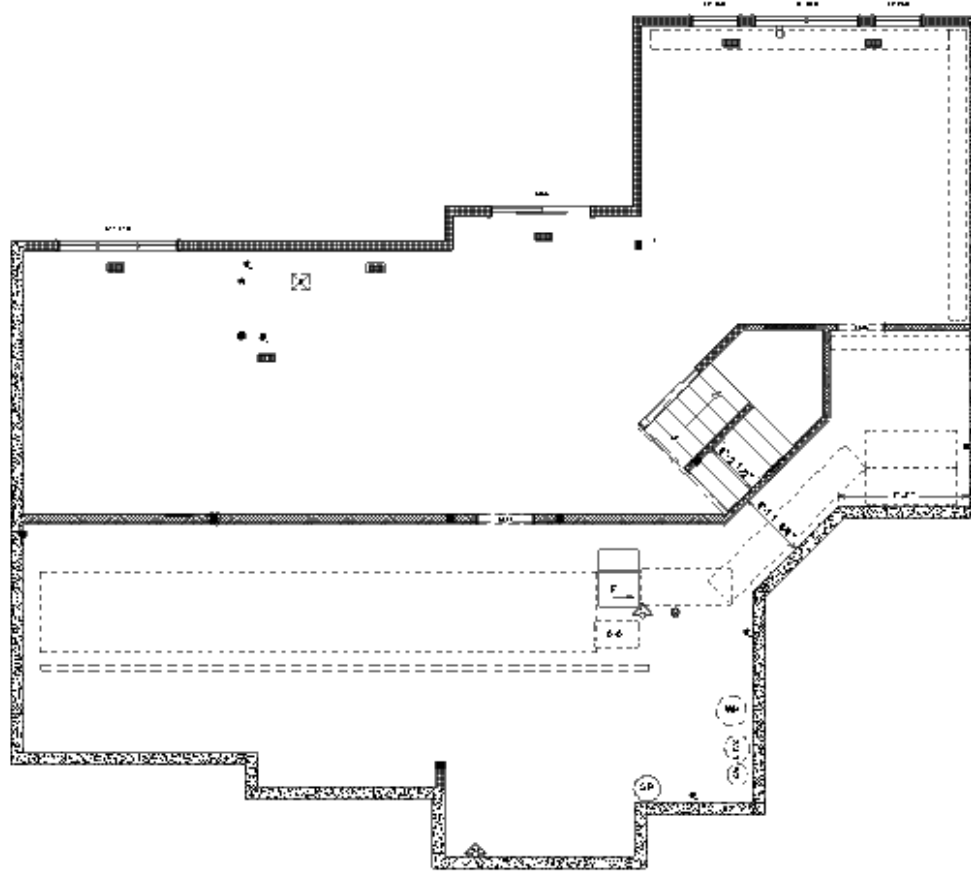


Maple Grove Basement

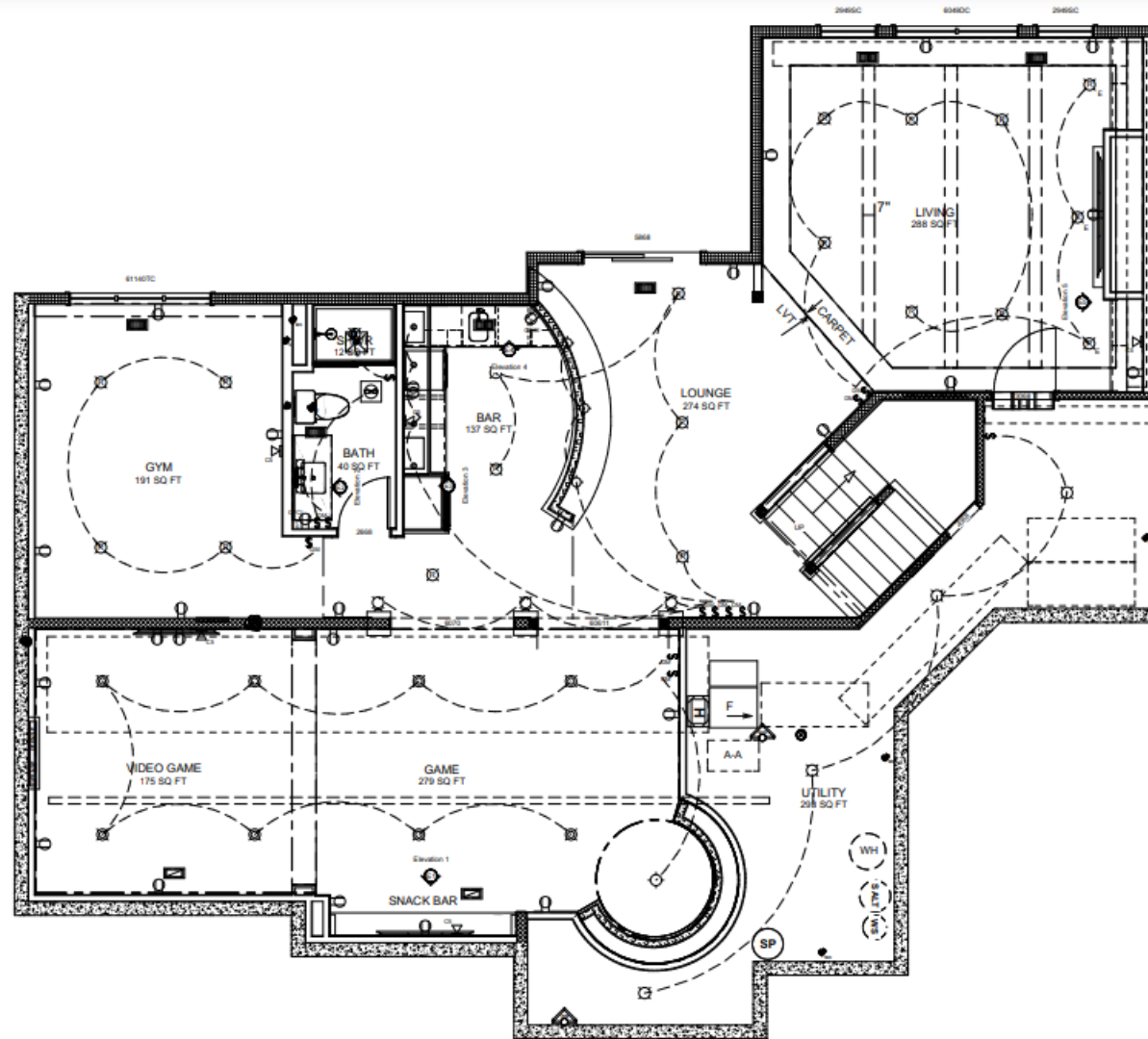
Summary

We wanted to make this basement a functional entertainment area for everyone in the house. Their wish was to have room for all and we made that happen with, the private booth, living room for movie nights, bar for football game and a game room for the kids. while still being ablet to have an open concept. We were able to use the load bearing point as a great design detail wrapping them with stone that is present throughout the space. The perfect functional space with a timeless design.

Existing Floorplan



Remodel Floorplan



The Clients wanted a space that would be warm and inviting. We did this by adding wood tones and a timeless stone on the fireplace

AFTER





AFTER



The unfinished
basement

BEFORE



The bar was goal was to be the main hub of the space and welcoming from all angles. By having a curved countertop, it made for a great place to sit and still be able to communicate to all who is there.

AFTER



By making all the appliances in the base cabinets and having a panel front fridge. We wanted to backbar to still be functional with all the appliances but still have a clean design.

AFTER



BEFORE



Within each of the stone wrapped columns is a load bearing post. It also gives the game/ lounge area more of a separation but still being open to the other areas

AFTER

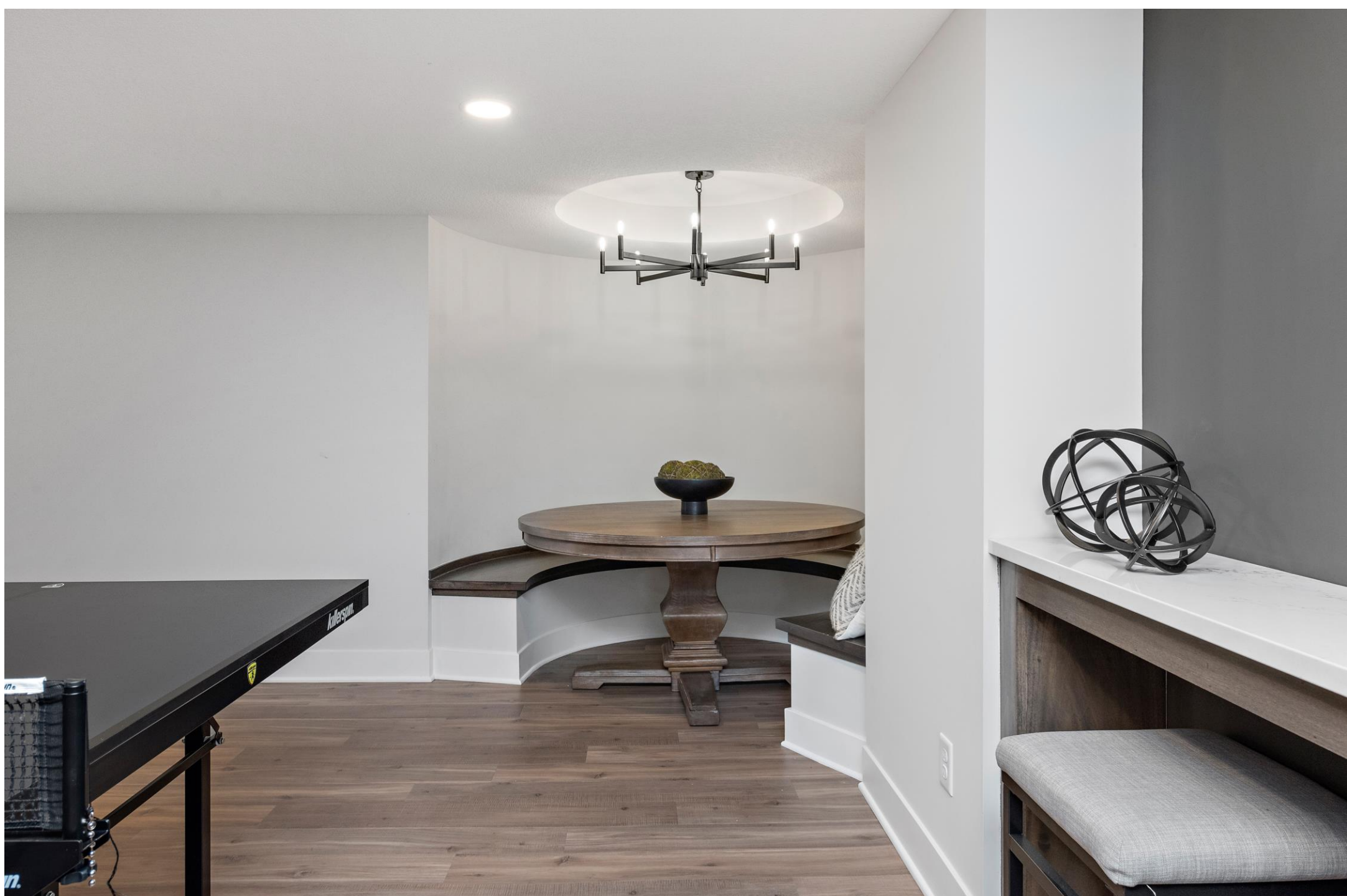




AFTER

The private booth is perfect for those who still want to be apart of all the action but may want to relax and play few rounds of cards.

AFTER



They wanted to keep the bathroom bright with a clean looks but still have a pop of design. By adding the herringbone tile in the shower, it was a great way to have both.

AFTER

