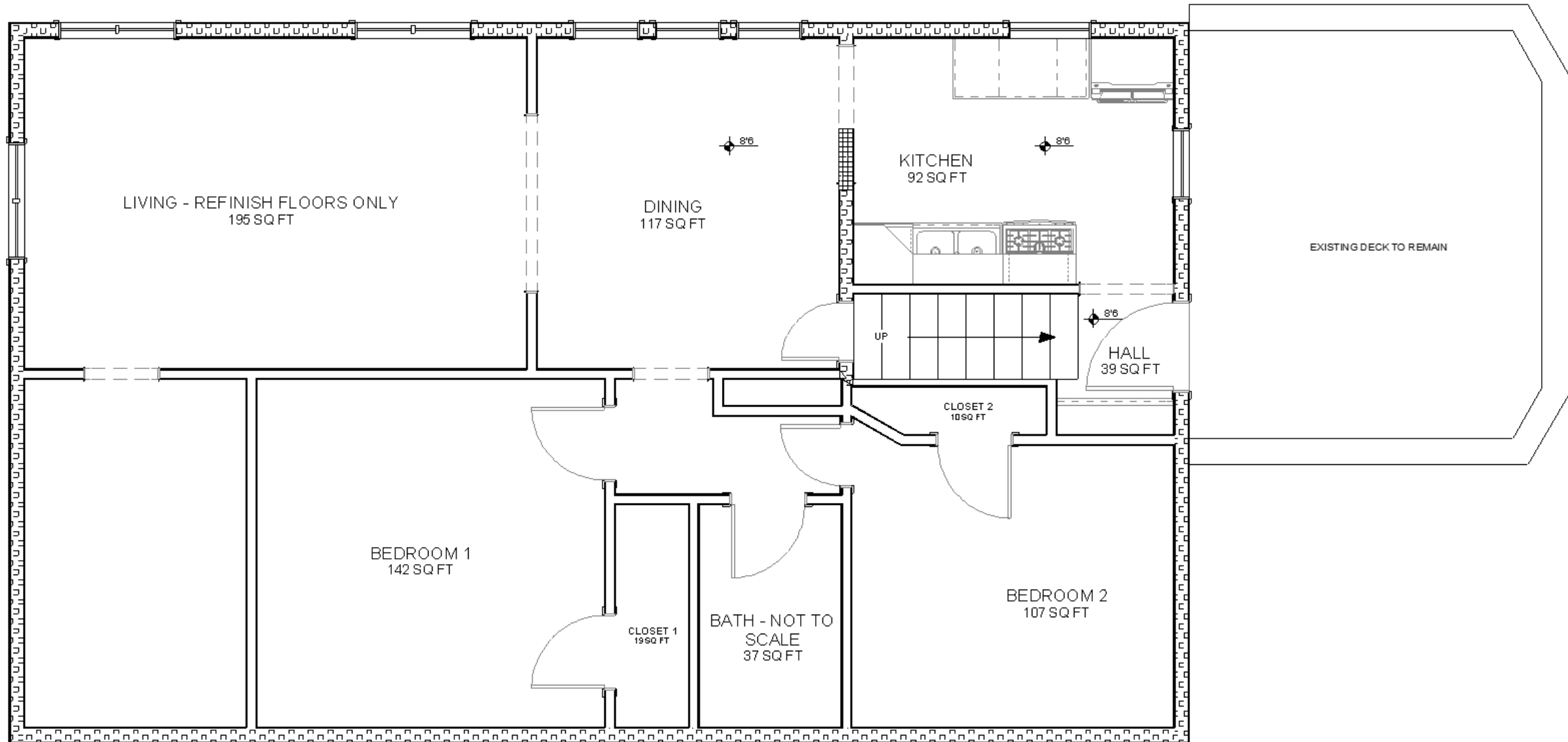


1925 Kitchen Remodel

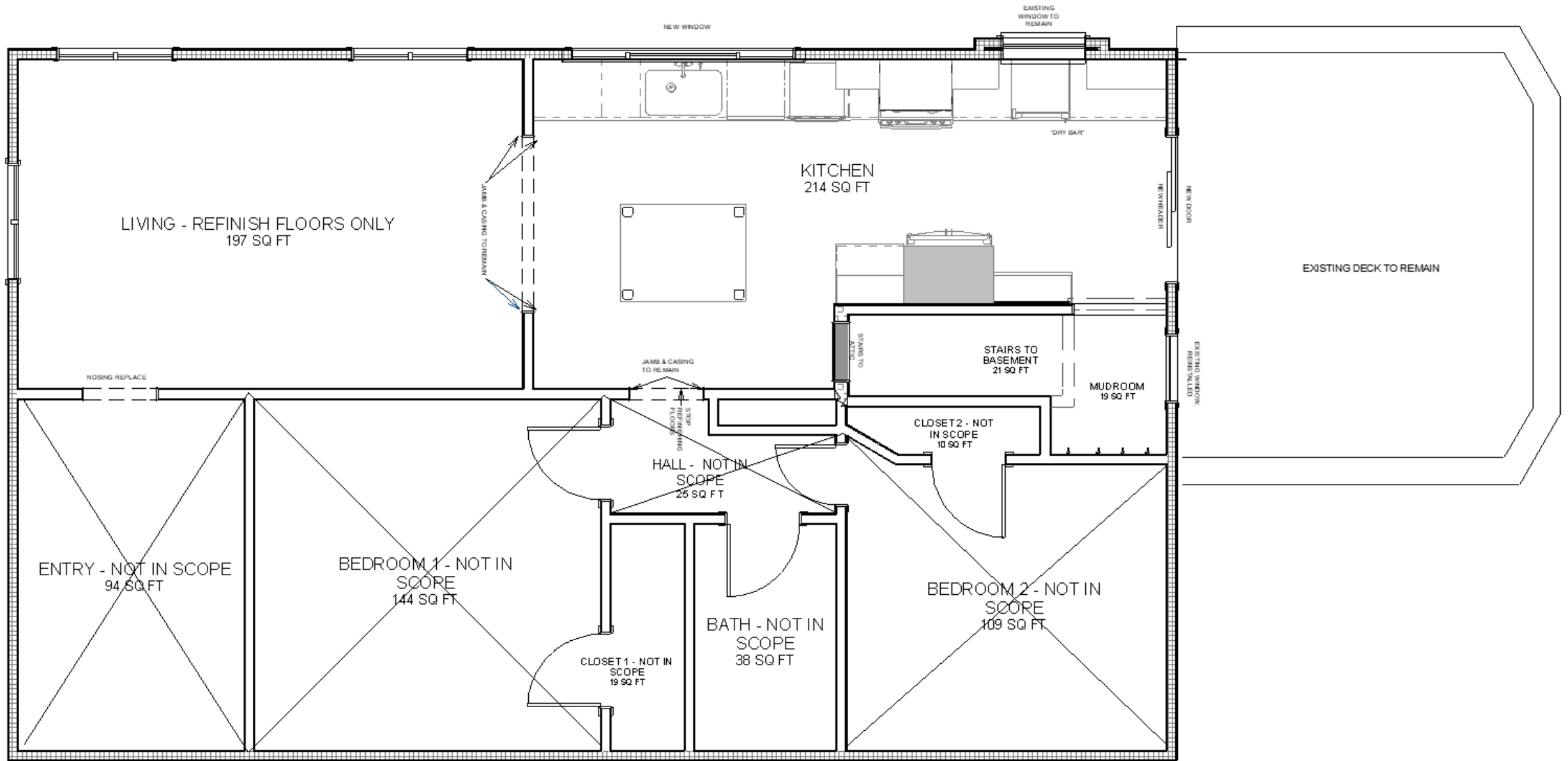
Summary

In this charming 1925 home the 92sf kitchen was not functional for the growing family of 5. A space to gather, storage and workspace was the top priority in the redesign. The footprint of the kitchen expanded into the existing dining room to create both a galley kitchen and an open concept space with an island for seating. This allowed the kitchen to have ample prep and cabinetry storage along the perimeter while improving the flow from the backyard with a large sliding door to the gathering space of the home at the island and living room. The space now feels open with distinct spaces for cleaning, cooking, entertaining, and even a place for the dog. The blue lower cabinets ground the space while the white uppers create the allusion of high ceilings in a compact space. The classic feel of the home was continued through the extension of original hardwood floors into the existing kitchen, white subway tile and beautiful stained wood. Both natural light and interior light also played an important role in the new kitchen, adding task, overhead, and ambiance light to allow the space to function at all hours of the day while increasing the natural light throughout the first floor. The challenges of working in a small footprint created efficiency that will benefit the growing family as they evolve into the space.

Existing Floorplan



Remodel Floorplan





REMODEL



BEFORE

An existing framed opening was removed to create a larger kitchen footprint.

AFTER





BEFORE

A new wine door hides the access to the attic, the attic stairs were previously used as overflow kitchen/pantry storage.

AFTER





BEFORE

A sliding glass door replaces an existing window to allow better flow from their outdoor entertaining space.

AFTER





BEFORE

Undercabinet puck
lighting illuminates
each countertop
space.

AFTER



BEFORE



The beverage cooler and expansive countertop create the perfect space for appetizers whether entertaining indoors or out.

AFTER



BEFORE



The open cabinet allows for dog supply storage and pet bowls tucked under the cabinet on the floor.

AFTER





BEFORE

Layered lighting above the window and island create atmospheric lighting used to highlight the space and adding a subtle glow at night.

AFTER



BEFORE



Three individual low and drafty windows were replaced with one window opening. Raising the bottom height allowed for cabinets to be extending across the entire space.

AFTER



A dining table style island allows for maximized seating and stool storage.

REMODEL



REMODEL

