



# NARI MINNESOTA - 2022 COTY AWARDS

RESIDENTIAL KITCHEN





**PROJECT:** Fairview Lane - Kitchen Remodel  
**CATEGORY:** Category 4 - Residential Kitchen \$100,001 to \$150,000

After 20 years, our client knew it was time for a new kitchen. With limited natural light, their space was dark and the flow from the family room through to the dining room was unbalanced.





# MEETING CLIENT NEEDS

They wanted to bring in natural light, improve the flow and install state of the art appliances and accessories - including a special coffee bar.

While the final look is simple and refined, the design and engineering posed significant structural and ventilation challenges. Because the kitchen opens into an adjoining family room, we had to be sure that the design flowed as seamlessly as the function. The transformation is spectacular.





## DETAILS

The Hefele Magic Corner allows the maximum use of the corner space in the cabinets. It's a much better solution than the traditional 'lazy-susan.'

We installed the in-counter cutting board with a hole directly above the waste bin, allowing any cutting waste to go directly into the bin without extra handling.







## DETAILS

We added a large picture window to open the kitchen to an abundance of natural light and a beautiful view of the back yard.

All the countertops have 6CM edges to bring a defining line throughout the kitchen.





## DETAILS

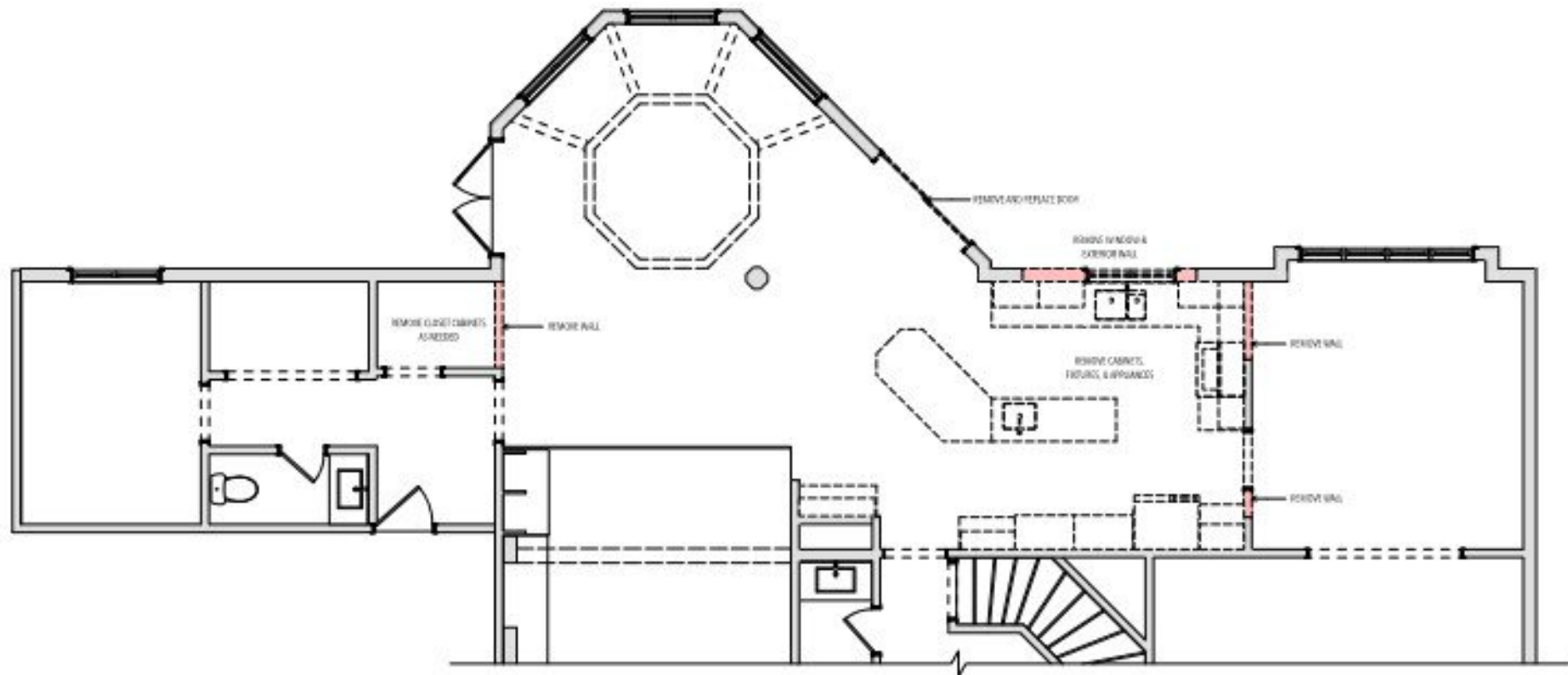
The coffee bar was designed to hold everything needed for that special cup every morning then hide it all the rest of the day.



# FLOOR PLAN

## BEFORE

Floor plan shows the flow from the great room to the dining room as going right through the work space of the kitchen.



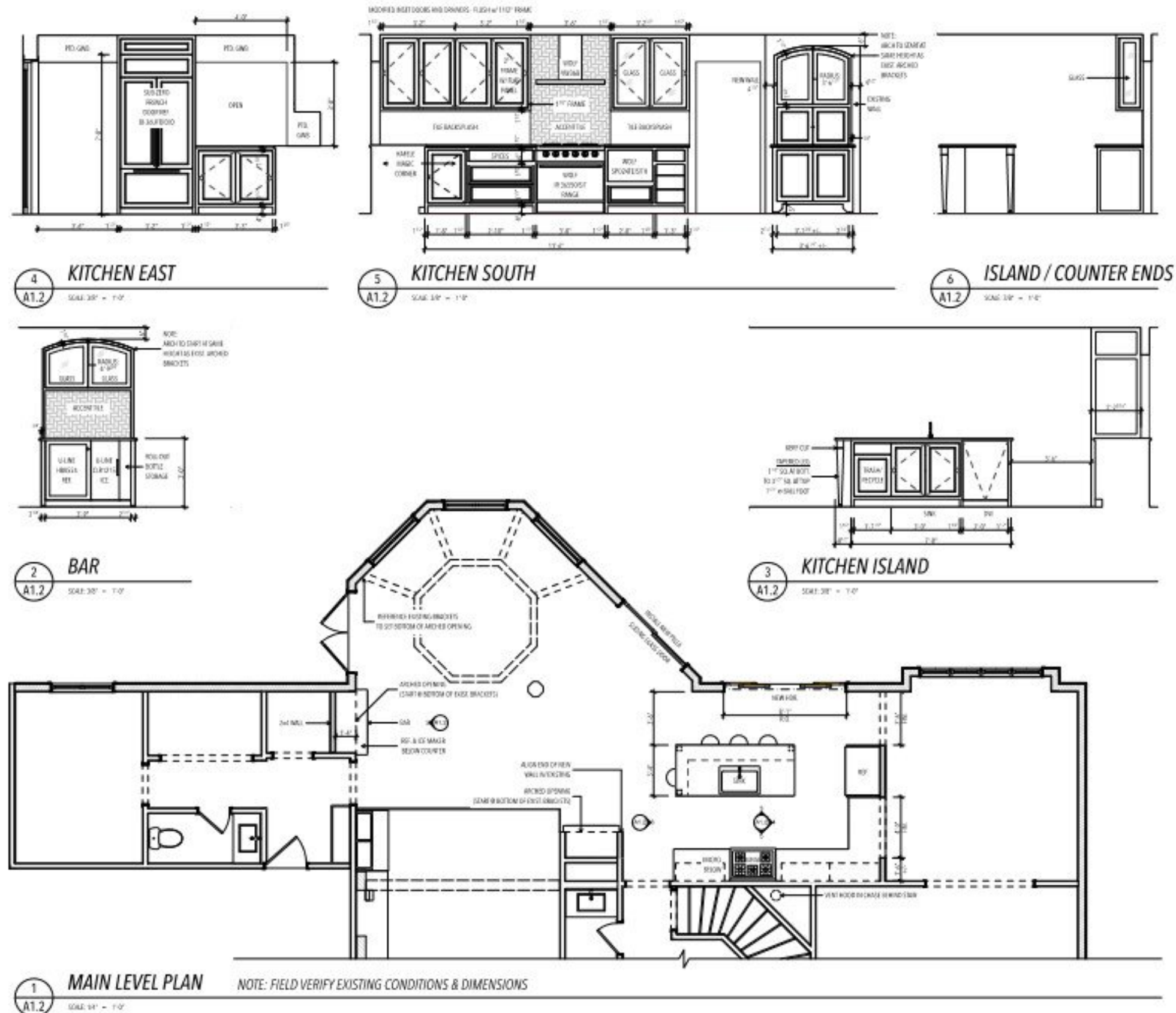
1  
A1.1 EXISTING MAIN LEVEL PLAN - DEMOLITION PLAN  
SCALE 1/4" = 1'-0"



# FLOOR PLAN

## AFTER

Floor plan shows the improved flow between rooms without walking through the working space of the kitchen and opening up the wall to become a window of light into the space.





# BEFORE & AFTER

*Before* – Cooking area was limited. Dark and cramped into the corner of the kitchen. The island was small narrow and did not offer much space for food prep and no space for seating.

*After* – Relocating the passage into the dining room opened up the cooking space to an entire wall and allowed the island to double in size and provide great food prep area and seating space.

## BEFORE



## AFTER





# BEFORE & AFTER

*Before* – While the sink had a view the rest of the kitchen shut off the dining room and created a dark and cramped space.

*After* – Adding a large picture and casement window unit to the exterior wall and relocating cooking, refrigeration and passage to the dining room completely transformed the kitchen into a chef and entertainment space that is bright and clean looking.

## BEFORE



## AFTER







Intentional design coupled with sound structural engineering and problem solving by our skilled team enabled us to bring our clients' dream to life.



