

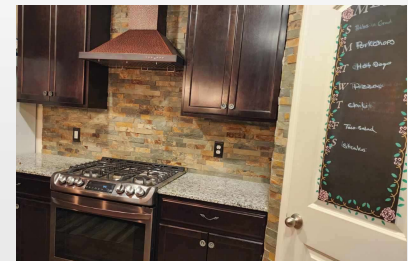
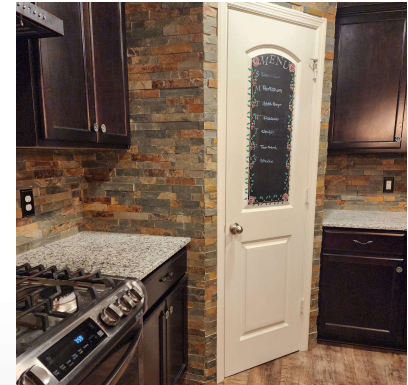
THE BORING KITCHEN



BEFORE
THE CUSTOMER HAD PURCHASED A NEW HOME THAT
HAD ONLY THE STANDARD BUILDER GRADE OPTIONS.

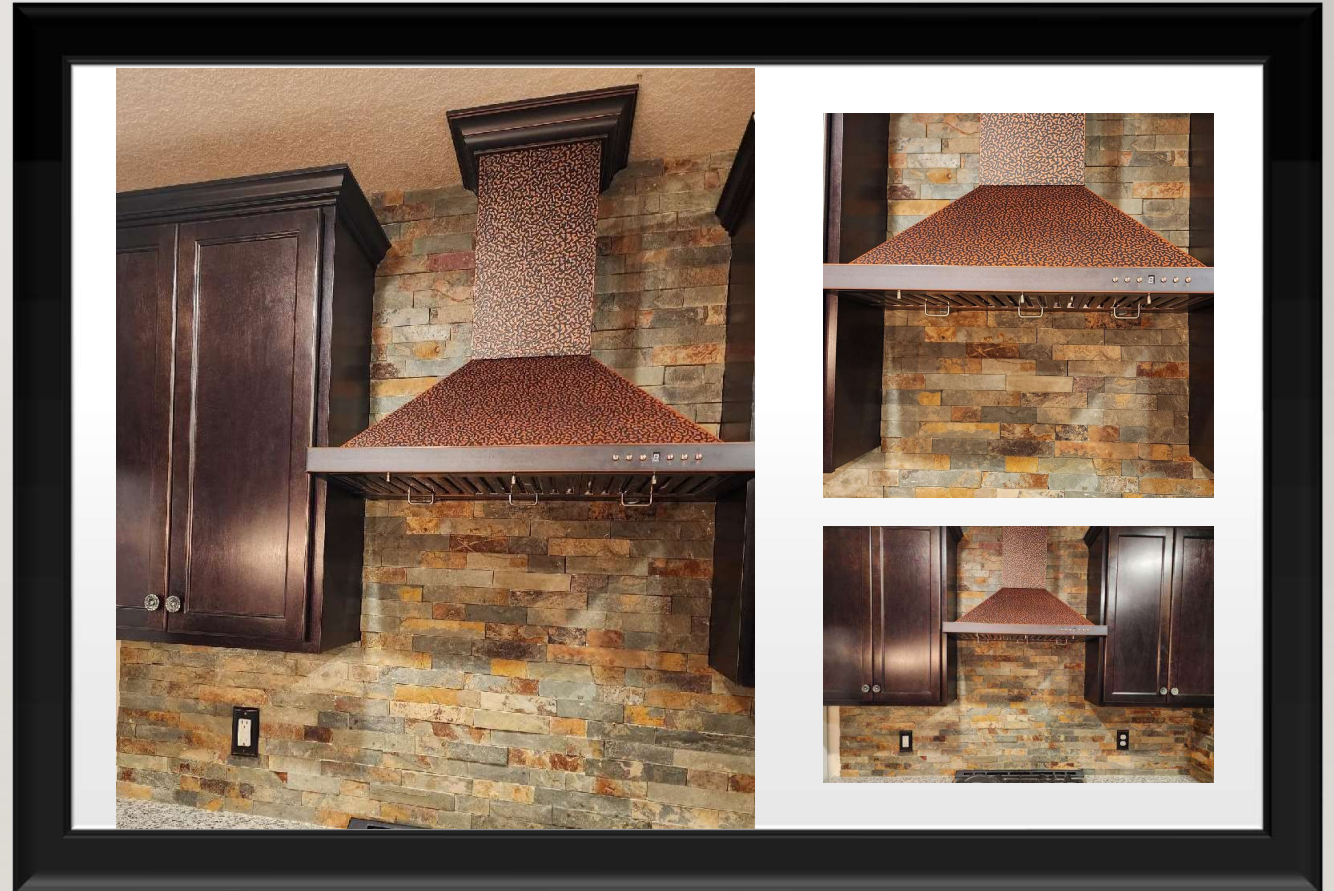
THE PANTRY

- First on the list was the pantry. While they love the space it offers, it was just simply a boring entrance. A fresh coat of paint, chalk board paint, and hand drawn flowers provide a great place for the family to keep track of what's for dinner!



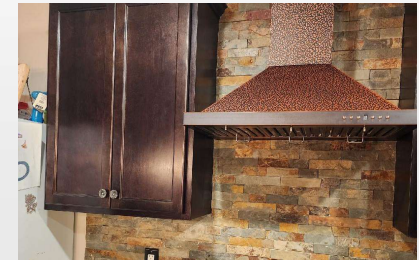
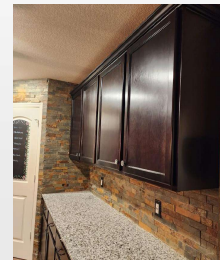
THE HOOD

- Next it was time to remove the unused microwave and upgrade to a fully vented hood. They chose a beautiful hammered copper hood with variable speed and lighting. The new hood keeps the kitchen air fresh and adds a great look to the space



THE TILE

- The final touch to this kitchen upgrade was the stone. They picked a stone that has a great mix of color and size. It fits perfectly with the cabinets and the hood.



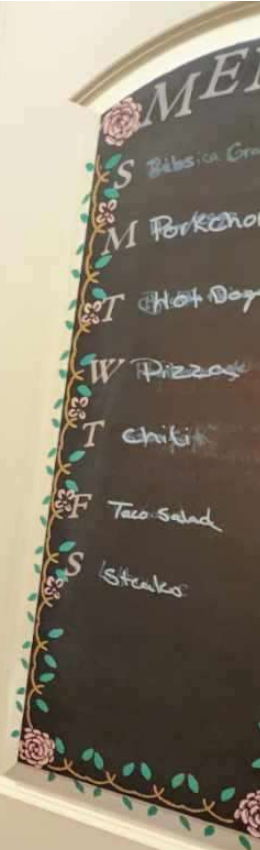
The image is a composite of two photographs of a kitchen. The left photograph shows a stainless steel oven with a gas cooktop, a copper-colored range hood, and dark wood cabinets against a multi-colored stone backsplash. The right photograph shows a close-up of dark wood upper cabinets and a granite countertop. A semi-transparent black box with white text is overlaid in the center of the image.

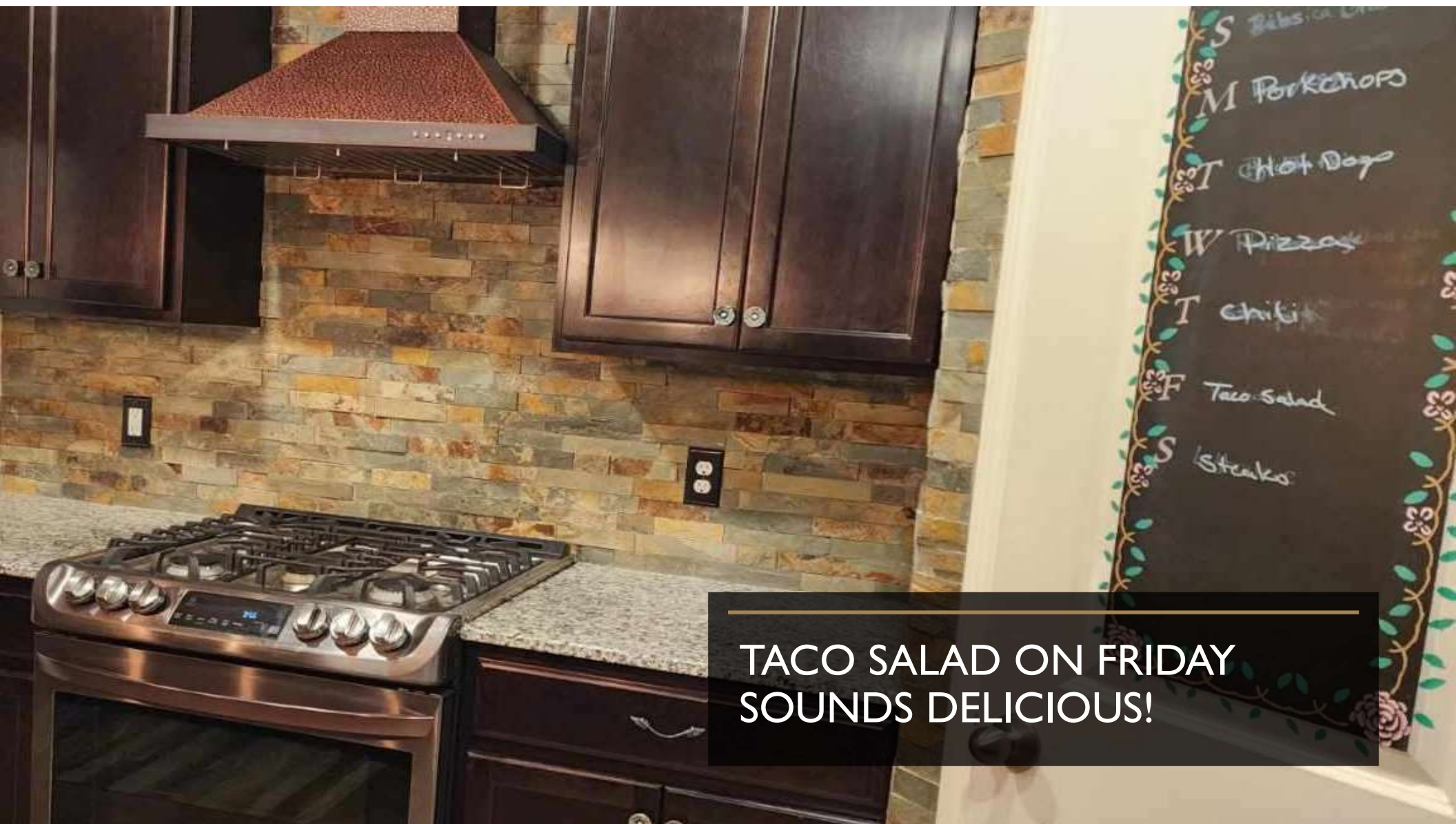
THE CHALLENGES

- Unfortunately, as with many production homes things just aren't quite right many times. This became quickly apparent as we laid out the tile and realized that the cabinets on the left and right sides were set at different heights. The left side was over $\frac{3}{4}$ " taller than the right and required a bit more math to make sure everything lined up and looked good.

THE CHALLENGES

- We also had to address the pantry walls, not only were they not plumb top to bottom, but the outside corner angles were not even either. It took a bit of additional effort to ensure that the tile went in evenly and flush to the door casing





TACO SALAD ON FRIDAY
SOUNDS DELICIOUS!



