

## Design Statement

The homeowners of this 1974 home knew that it was in need of a lot of TLC, both inside and out, when they bought it. They loved the land and the overall architecture of the home, but new it could be better. When we first met the homeowners, they wanted to pursue a full interior remodel with a new layout and a room addition to hold a home office. We came up with a beautiful design that the homeowner loved and proceeded with our process of pricing it. After further inspection of the home, we thought it would be in the best interest of the homeowner to start with repairing the exterior. The siding and roofing was rotten, the decks were unsafe, and the windows needed to be replaced. This gave us the opportunity to change the whole look of the front of the house and give it a more functional and aesthetically pleasing entrance.

The homeowners have an eclectic style with a love for simplicity as well as Asian-inspired influences, which came from some of their travels. The new design features clean asymmetrical lines that highlights the already unique architecture of the home.

### Challenges

Before construction started, we realized the structure needed more support, there was nothing holding it together from left to right. We went back to the architect, and he came up with using the metal ties which turned out to be a perfect compliment to the design.

During the demolition of the existing decking and siding, the homeowners were faced with the choice to do the office room addition now, or pay to replace a deck that they didn't even use. The office addition above the garage was part of the original design for the interior. The deck structure was rotten and needed a lot of repair, it only made financial sense to go ahead with the addition now vs. the new deck that would have been removed in the future for phase 2 (the interior remodel).

### Design/Selections

Selecting the proper materials was important for this home, not just for aesthetics but for long term durability and low maintenance. LP siding was chosen for its low maintenance features as well as it's beauty and natural looking characteristics. We mixed both horizontal lap siding and vertical board and batten to highlight the new architecture. The decks feature Trex decking and metal railing mixed with cable rail. The front door and garage doors are maintenance that mimic the look of natural wood. The only natural wood that was used was in the front entry ceilings, we really wanted a natural wood color tone and felt the natural wood was the best choice for this important feature. The new roof is asphalt shingles vs. the original wood shakes. Although wood shakes are beautiful, the asphalt shingles will have more longevity.

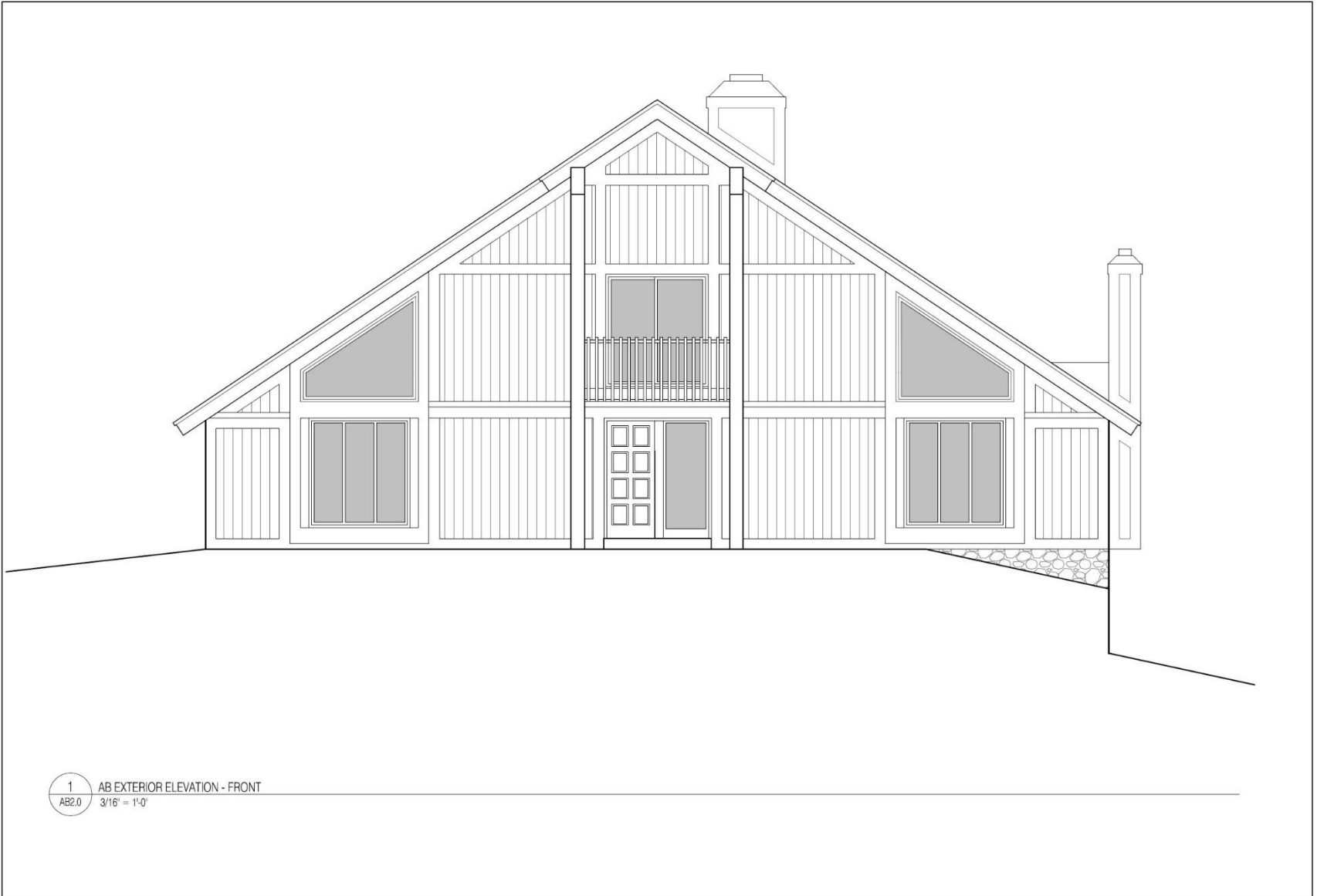
The color scheme was extremely important. We wanted the home to be dramatic and to stand out amongst the steep landscape and wooded surround. We chose a black for the trim, fascia and window bumpouts and a very dark gray for the body of the house. The natural wood tone of the soffits, front door and garage doors give it a natural warm feel against the dark dramatic color.

## Design Statement (pg. 2)

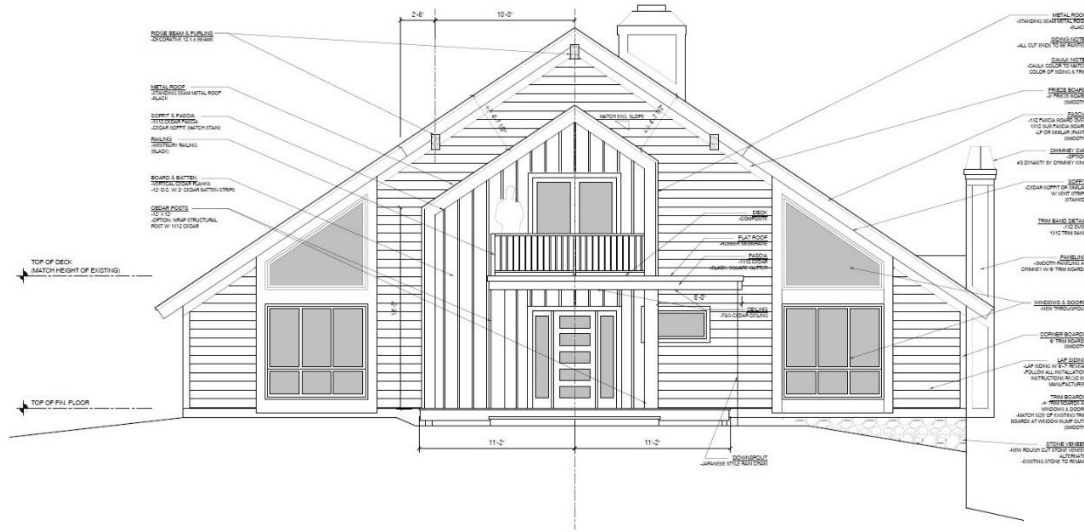
A newly landscaped front elevation created a much more functional and more maintainable front entry for the homeowners. The new stone walkway and boulder walls were just what this dramatic home needed to make it complete.

The homeowners could not be more thrilled with finished product. Their home stands out amongst the neighborhood and will be beautiful for many years to come!

## Existing Front Elevation



## Proposed Exterior Elevations



1	EXTERIOR ELEVATION - FRONT
A2.0	1/4" = 1'-0"



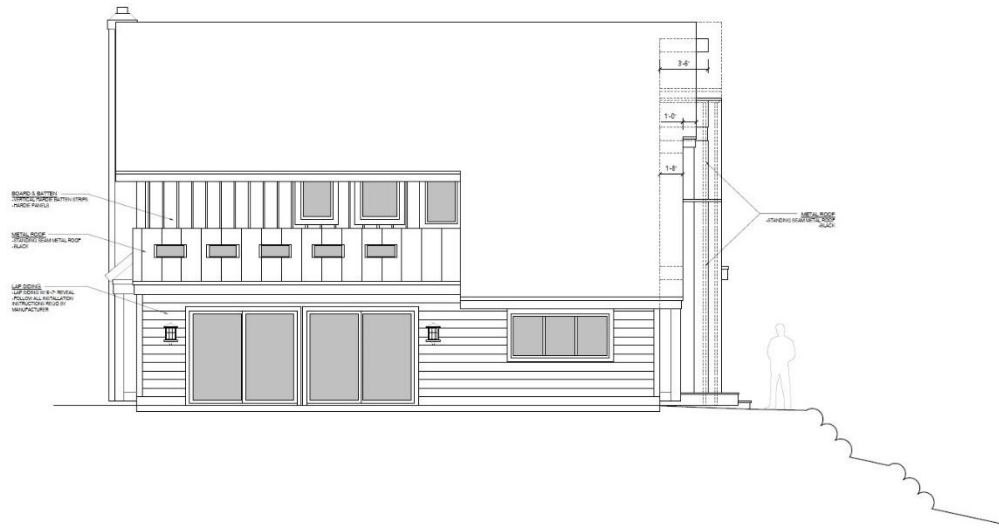
2 EXTERIOR ELEVATION - GARAGE SIDE  
A2.0 1/4" = 1'-0"



# Proposed Exterior Elevations



1 EXTERIOR ELEVATION - REAR  
1/4" = 1'-0"



2 EXTERIOR ELEVATION - SIDE  
1/4" = 1'-0"



## Before Photo #1a



This before photo shows the old staircase from the driveway to the front door.

## Before Photo #1b

This is the deck space that turned into a room addition for a home office





After Photo #1





## Before Photo #2

Front of house view front street





After Photo #2





### After Photo #3

Dramatic front view, notice the steel ties and the wood toned soffits.





## After Photos #4 & #5

More close up views showing the details of the front entry.





## After Photo #6

Close up view of the new stone steps up to front entry.

