

A photograph of a modern dining room. In the foreground, a round wooden dining table is surrounded by black chairs. In the background, there is a grey sofa, a stone fireplace with a wooden mantel, and large windows. A black pendant light hangs over the table. The floor is made of light-colored wood.

Category 27

# Entire House \$750,001 - \$1,000,000

Project: Reimagining A Classic

# 100-WORD SUMMARY

Previously, this classic 1930s home was outdated, featured small and congested rooms, and lacked adequate space and functionality. It was tastefully updated from top to bottom and added on to, to create more functional, modernized, and light-filled living areas. The new addition features a dynamic kitchen area and creates a more open and connected main level, and a sport court beneath the kitchen adds a fun space for kids to enjoy. Stunning interior updates, new exterior details, and a new garage modernize this home for today's needs, and bring fresh style, functionality, and curb appeal to this charming home.



## CLIENT NEEDS

- Long kitchen island with lots of seating room
- Top rated appliances
- Remodel the whole house
- Expand their main and lower level with an addition
- Reimagine their kitchen with upgraded appliances and space
- Create a sports court in the lower level
- New garage
- Increase storage
- Open layout and light feeling

## AESTHETIC

- Lots of windows bring in light
- Warm, calming neutral colors
- Brushed nickel towel rings and paper holder in bathroom
- Door hardware is flat black
- Gas fireplaces with beautiful stone
- Connectivity throughout the home
- Hardwood floors in gathering spaces and slate tile in mudroom
- Metal railings at both staircases add modern details

## INNOVATIVE FEATURES

- Large, open layout between kitchen, eating and gathering spaces
- Dug out lower-level sport court
- Open and functional playroom and game area with built-in table/ledge
- New walk-in pantry with built-in shelving

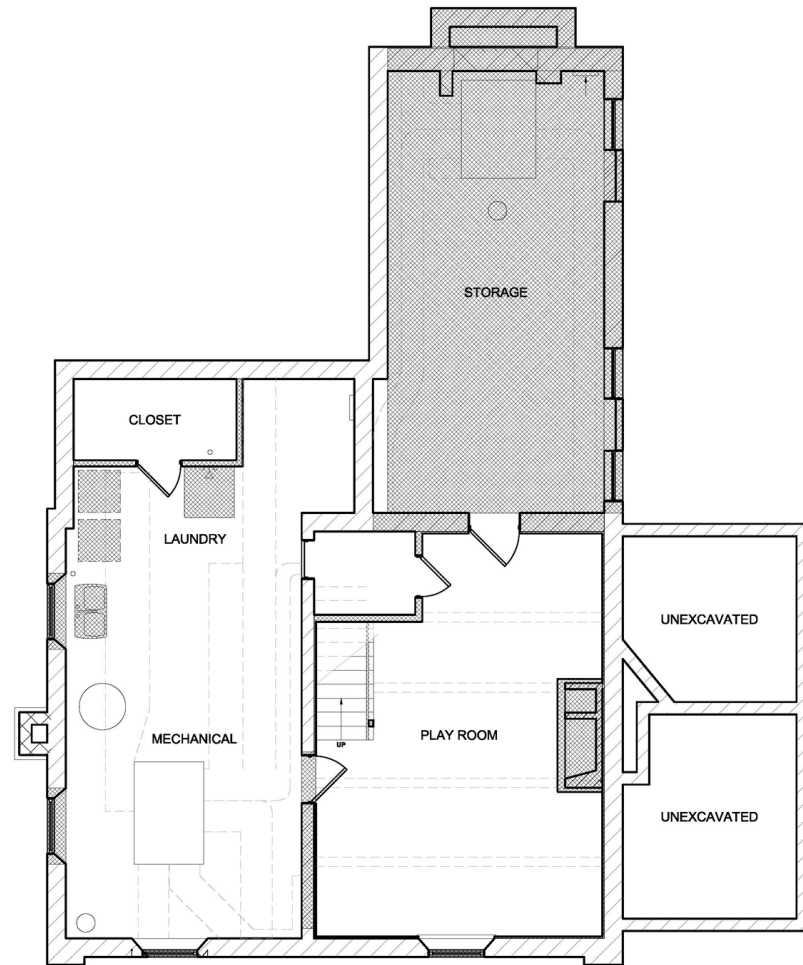
## FUNCTIONALITY

- Addition expanded the main level and lower level
- Lower-level sport courtroom
- Larger, open layout kitchen to the family room for connectivity
- Large kitchen island for workspace, entertaining, and gathering
- Connectivity and open flow from entry to the back of house
- Reorganized back spaces allowed more room for a bathroom and back entry while making space for a mudroom and pantry for a storage-rich space.
- Multipurpose sports court within the new addition for the family to enjoy
- Converted porch area to a much-needed secondary office
- Reconfigured owner's suite allowed for a walk-in closet and easier access to the bathroom

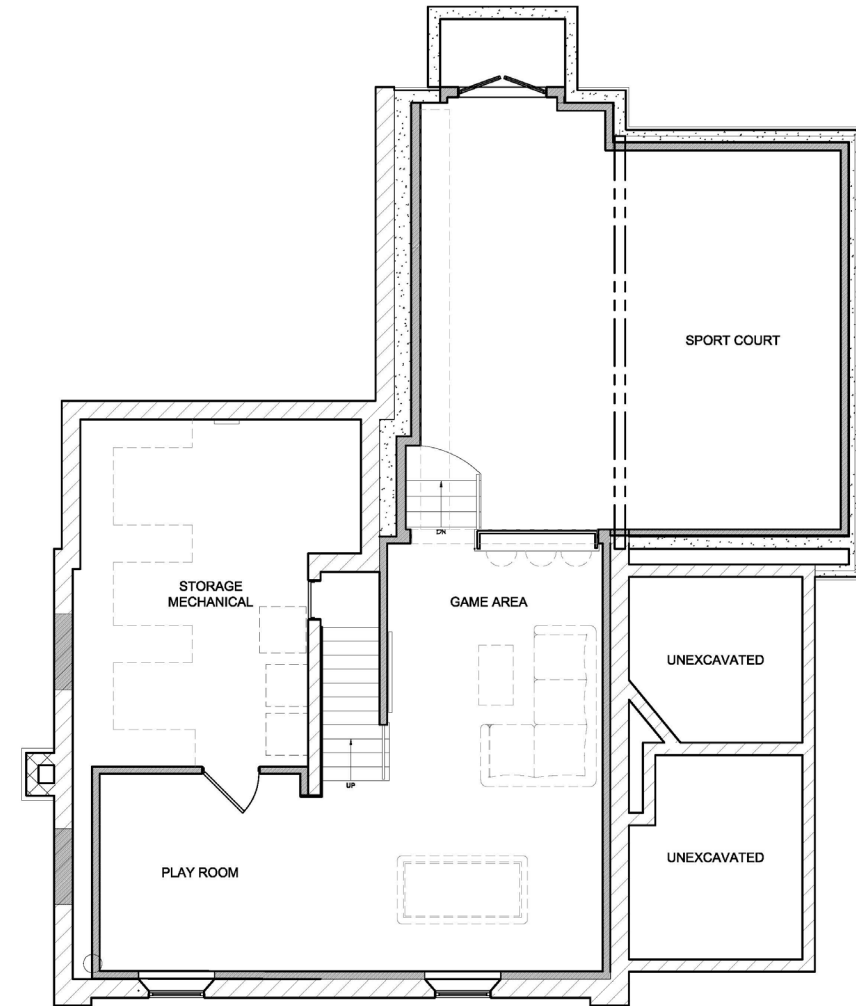
## CRAFTSMANSHIP

- Dug out, multipurpose sport court in the lower level
- Uniquely crafted kitchen island with storage space
- Reconstructed upstairs private quarters for functionality and connectivity
- New hardwood flooring and millwork throughout
- Converted porch area into a secondary office
- Kitchen area and island

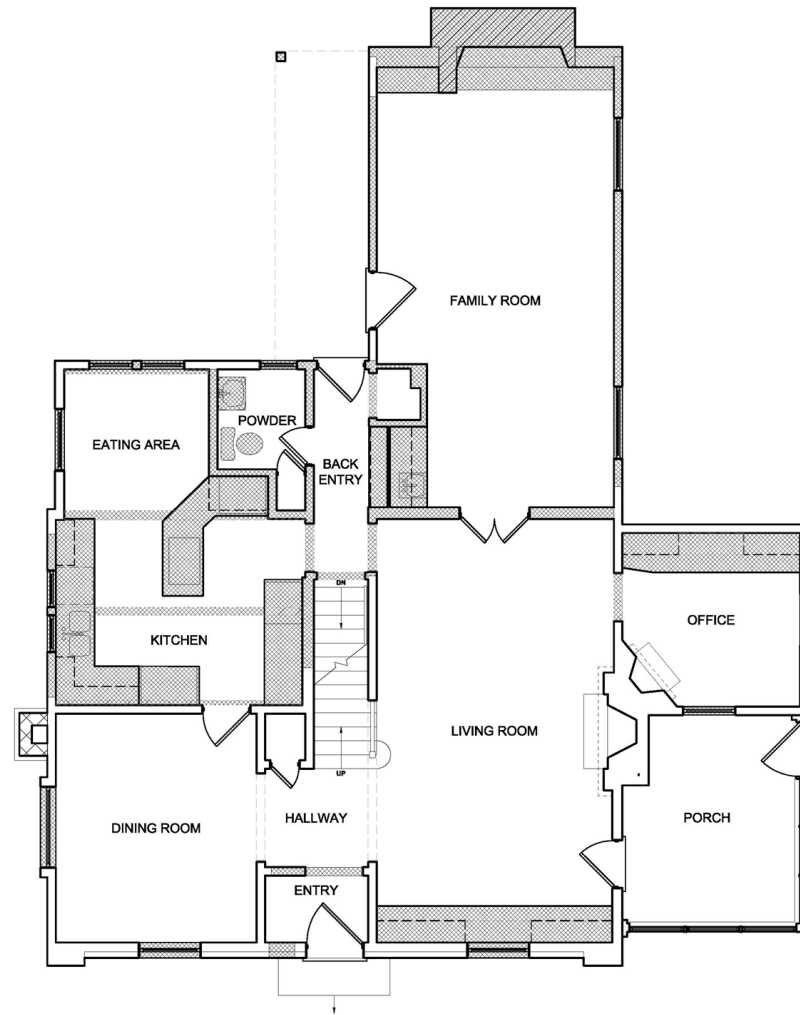




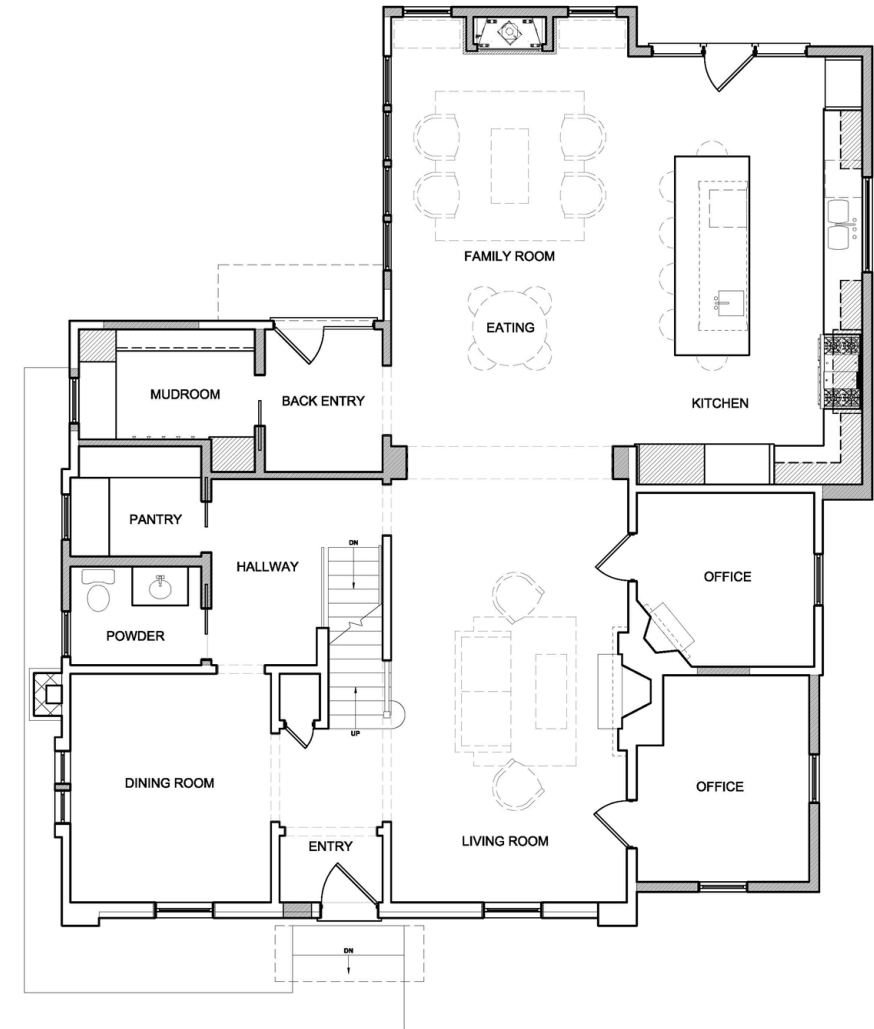
BEFORE PLAN  
LOWER LEVEL



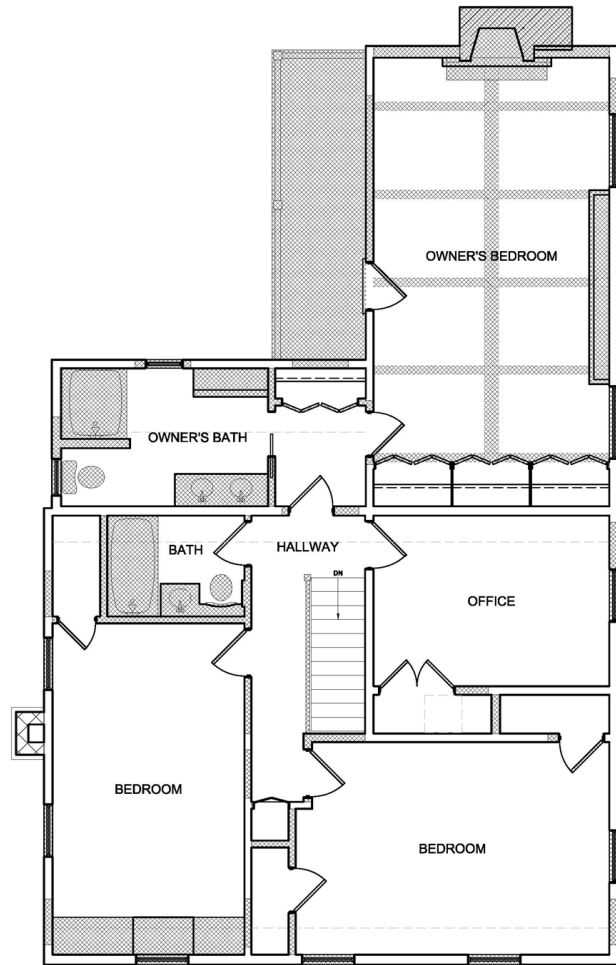
AFTER PLAN  
LOWER LEVEL



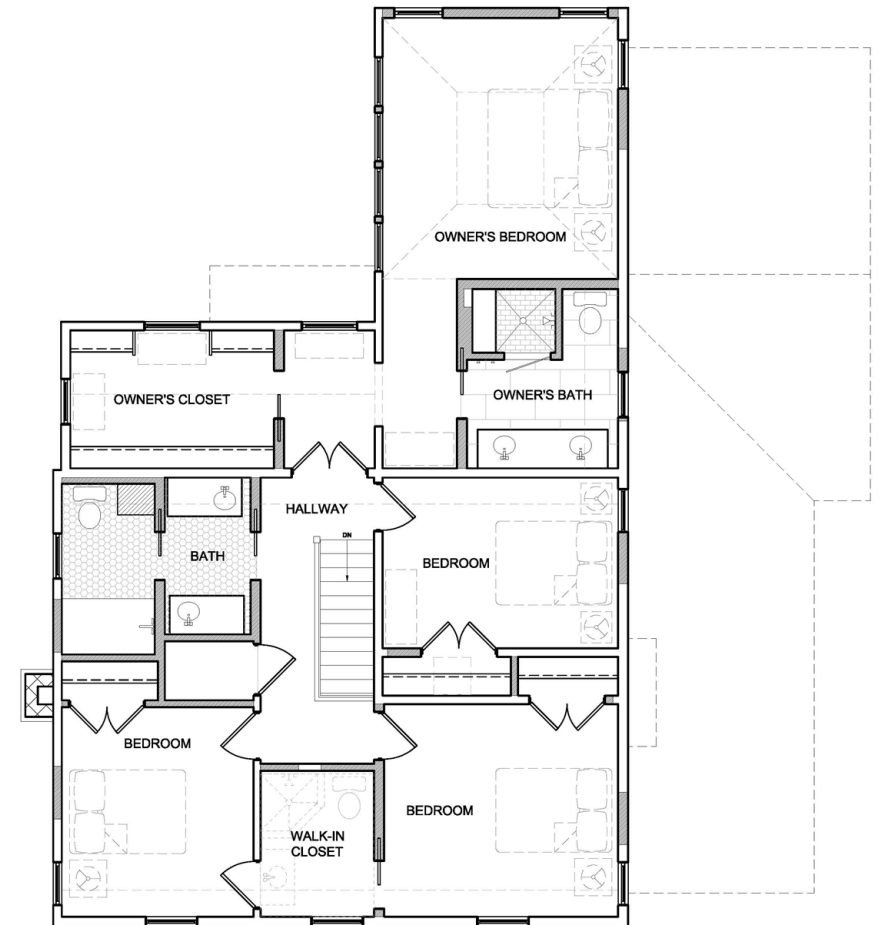
BEFORE PLAN  
MAIN LEVEL



AFTER PLAN  
MAIN LEVEL



BEFORE PLAN  
UPPER LEVEL



AFTER PLAN  
UPPER LEVEL





AFTER



BEFORE





AFTER



BEFORE





AFTER



BEFORE

AFTER





AFTER







AFTER



BEFORE



AFTER



BEFORE

AFTER



BEFORE







AFTER



BEFORE