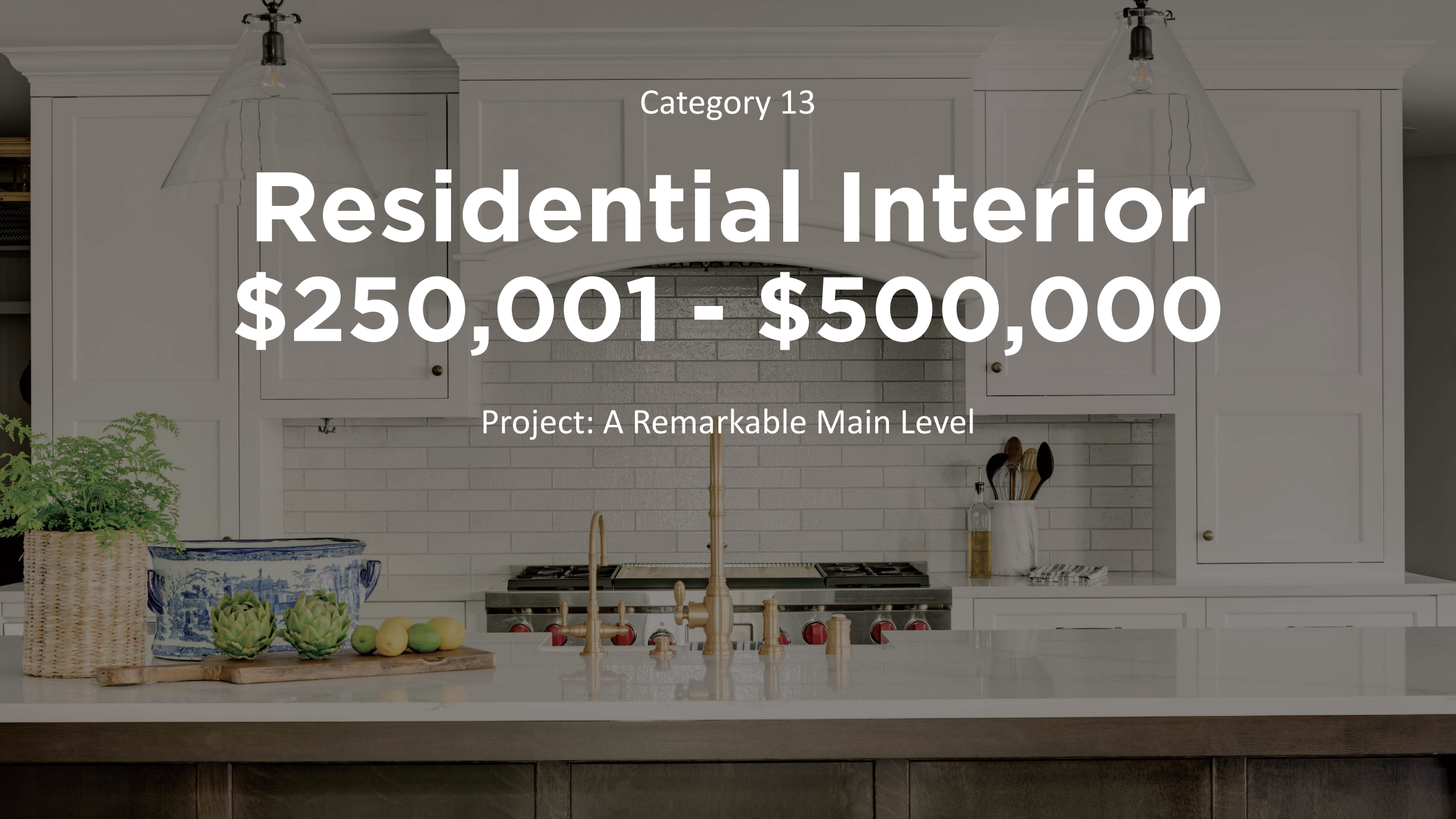


Category 13

Residential Interior

\$250,001 - \$500,000

Project: A Remarkable Main Level



100-WORD SUMMARY

A more simplified yet creative, light-filled layout and timeless design details completely transformed the main level of this home. Featuring a creative kitchen layout with stunning cabinetry details and hidden elements, a beautiful corner banquette, a reimagined powder room and mudroom space, an elegant office update, and a new light and bright energy, this remodel has awe-inspiring design and functionality on full display.



CLIENT NEEDS

- Remove structural posts affecting the kitchen, eating and living room space
- Improve circulation from the front entry to the kitchen and surrounding spaces
- Improve kitchen space making a hub for main-level activities
- Large kitchen island for seating, work, and cooking
- Kitchen appliances that improve the cooking experience
- Include a dry bar area
- Improve storage
- Refresh the main level to be lighter and bright
- Consistent style/era of existing home

FUNCTIONALITY

- Kitchen appliances and spaces were moved to closer proximity of each other
- Large kitchen island for gathering, working and cooking
- Increased storage in the kitchen
- Wrap around cabinetry to the mudroom
- Dry bar incorporated around the kitchen near powder room
- Kitchen acts as hub area for gathering, easily accessible from surrounding rooms

AESTHETIC

- Bright and light spaces
- Hardwood floors
- Fluidity for traffic and movement
- Bronze kitchen hardware
- Rustic sand tile backsplash
- Bright, warm and white beige colors
- Circa lighting overhead lighting with antique-burnished brass
- Style stayed consistent with style/era of existing home

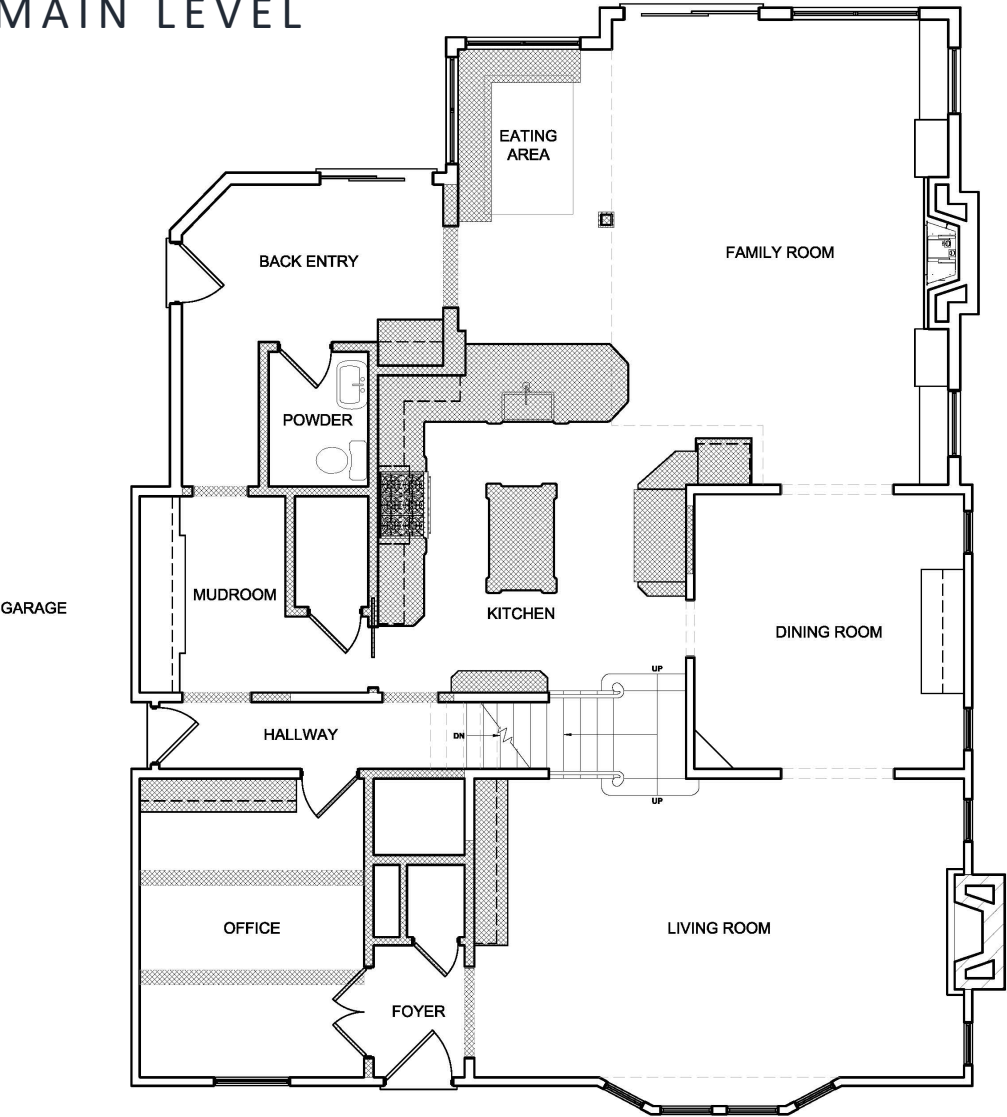
INNOVATIVE FEATURES

- Built-in French door refrigerator/freezer
- Ice maker with pump
- Undercounter beverage center
- Wolf, pro hood liner
- Wolf dual fuel 4 burner range and griddle
- Trash and recycling draw in large kitchen island

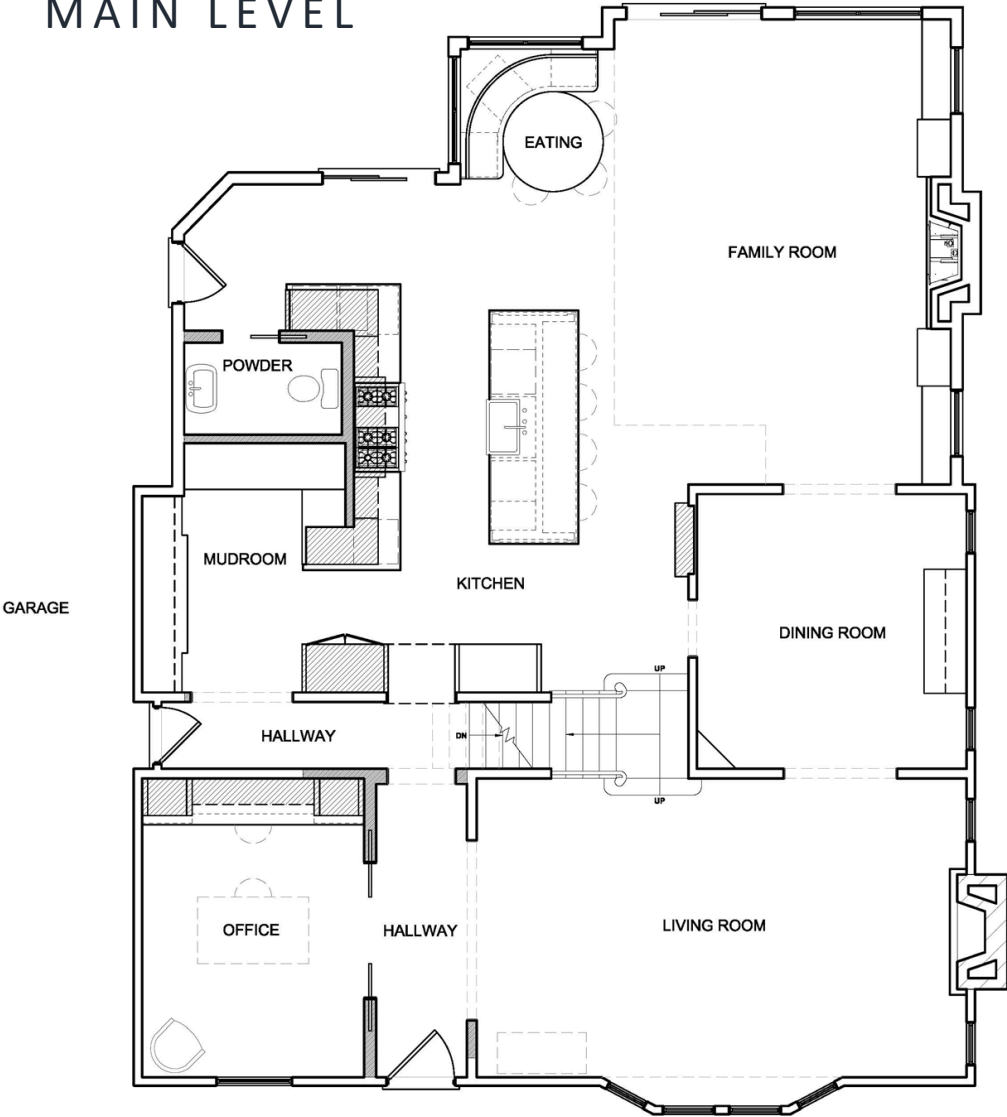
CRAFTSMENSHIP

- Entry closet was taken out to allow traffic flow from the entrance to the back
- Awkward structural post was removed
- Four new steel beams and additional LVLs allowed for the new open layout
- Kitchen nook area was rebuilt with beautiful millwork paneling and storage
- Built-in French door refrigerator/freezer
- Continuity and consistency between existing cabinetry and new cabinetry
- New cabinetry in office, part of mudroom, kitchen, powder room, back entry and eating area were enameled to match the moldings

BEFORE PLAN
MAIN LEVEL



AFTER PLAN
MAIN LEVEL



AFTER



BEFORE



AFTER



AFTER



BEFORE





AFTER



BEFORE



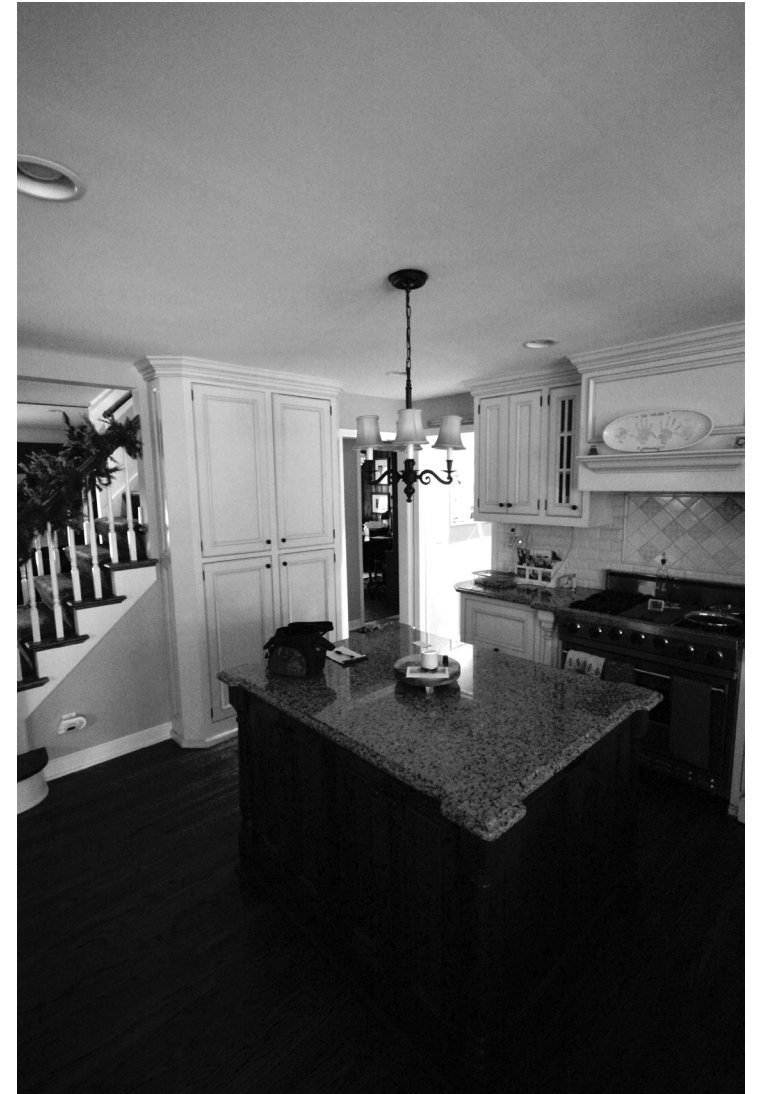
AFTER



BEFORE



AFTER



BEFORE



AFTER



BEFORE



AFTER



AFTER



BEFORE



AFTER



AFTER



AFTER

