



Category 27

Entire House Over \$1,000,000

Project: Lake Views from Every Room

100-WORD SUMMARY

Overlooking a beautiful lake, this contemporary home is defined by its scenic views, natural light-filled rooms, creative design features, and luxurious finishes. With only the foundation, garage and deck left intact, this whole home remodel operates like a new custom home. Featuring an open vaulted gathering space for the kitchen, dining and living area, an expansive main level owner's suite, a creatively designed lower-level entertainment and exercise space, and clean interior finishes, this home now boasts a truly unique living experience.



CLIENT NEEDS

- Remodel the whole home to fit the client's lifestyle and personality
- Modernize the layout
- Contemporary aesthetic
- Implement innovative features to elevate the living experience
- Enhance lake views
- Improve functionality for entertaining
- Include a wine cellar

FUNCTIONALITY

- Open layout from the living room to the kitchen created a seamless blend for entertaining
- On the main level, views to the lake are visible from every room, including the street side of the home
- Lower level has a room special for massages
- Hallway closet specific to owner's traveling needs
- Incorporated the master's closet into the garage for more space and functionality
- Walk-in closet has individual shelf lighting for a window-shopping experience

AESTHETIC

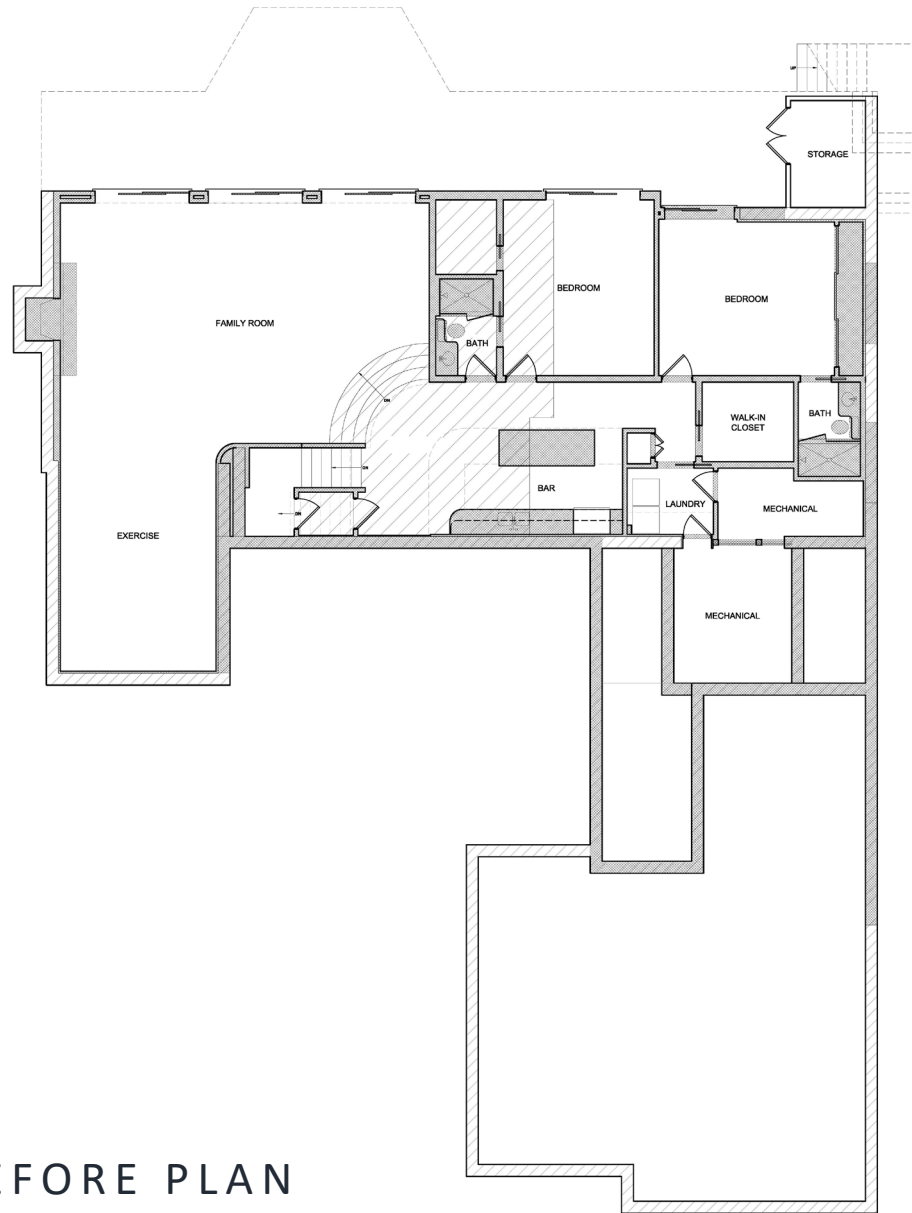
- Lots of natural light
- Recessed ceiling lights
- Mesh drum and linen shades for overhead lighting on the main level
- Beautiful right corner crystal glass fireplace in owner's suite
- Lake views from every room on the main level
- Shower walls are a wavy ceramic tile
- Textured, blue vinyl wallpaper in the office
- Blue-gunned lower-level fireplace
- Satin nickel hooks and pulls in the bathroom, laundry room, and massage room
- Flat black cabinet pulls

INNOVATIVE FEATURES

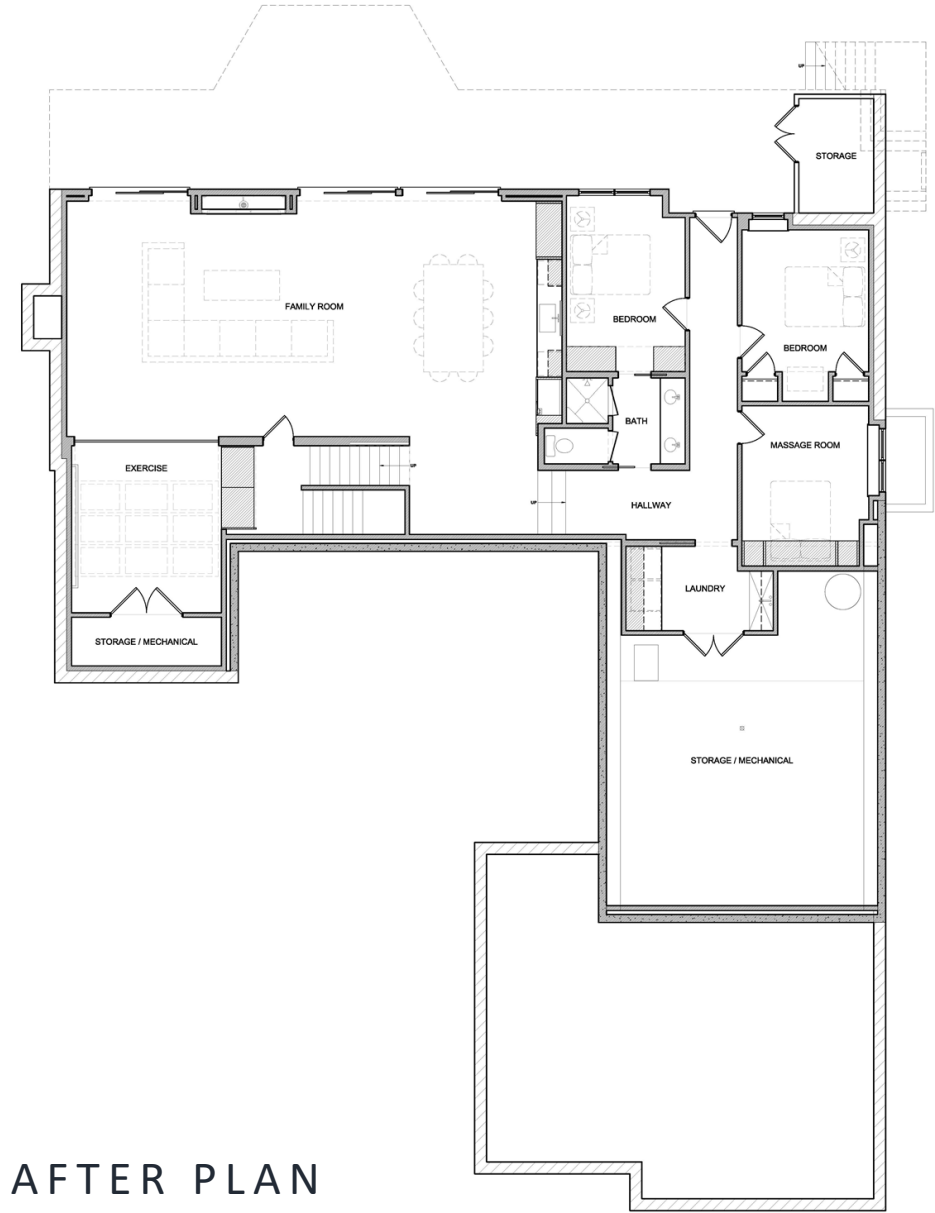
- Floor-to-ceiling, wall-to-wall pocket doors in owner's closet
- Vaulted ceilings allowed for 8ft-glass doors along the wall looking onto the lake
- Lower-level gym has a glass garage door with views to the lake
- Wine cellar with motion-activated door and a 400-bottle storage capacity
- Specially positioned skylights

CRAFTSMENSHIP

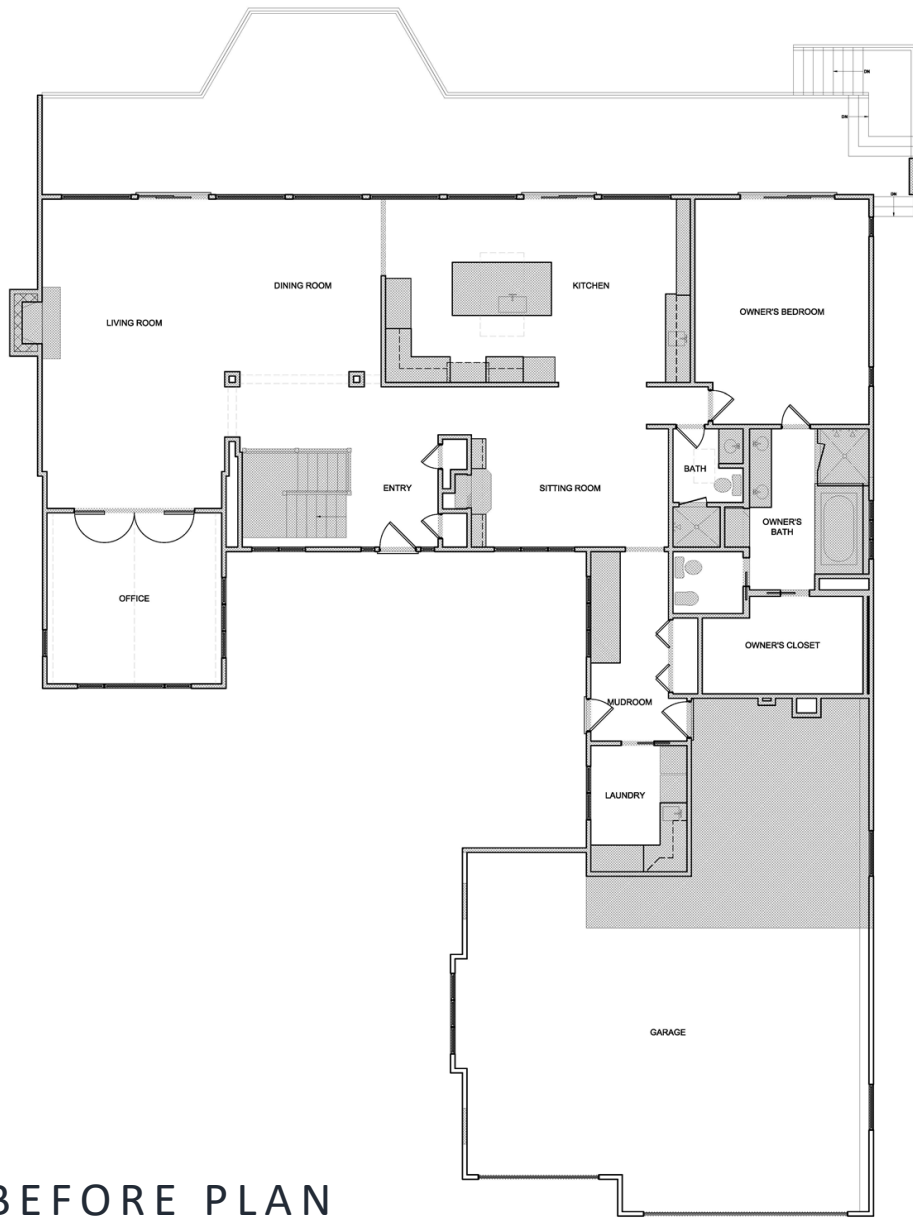
- Home was taken down to the foundation, leaving only the attached garage and deck intact and rebuilding
- Vaulted ceilings in the owner's suite, kitchen, gathering spaces and office
- A single-wall kitchen with an island, nearby pantry and wine cellar kept the views to the lake without dominating the space
- Blue-gunned lower-level fireplace



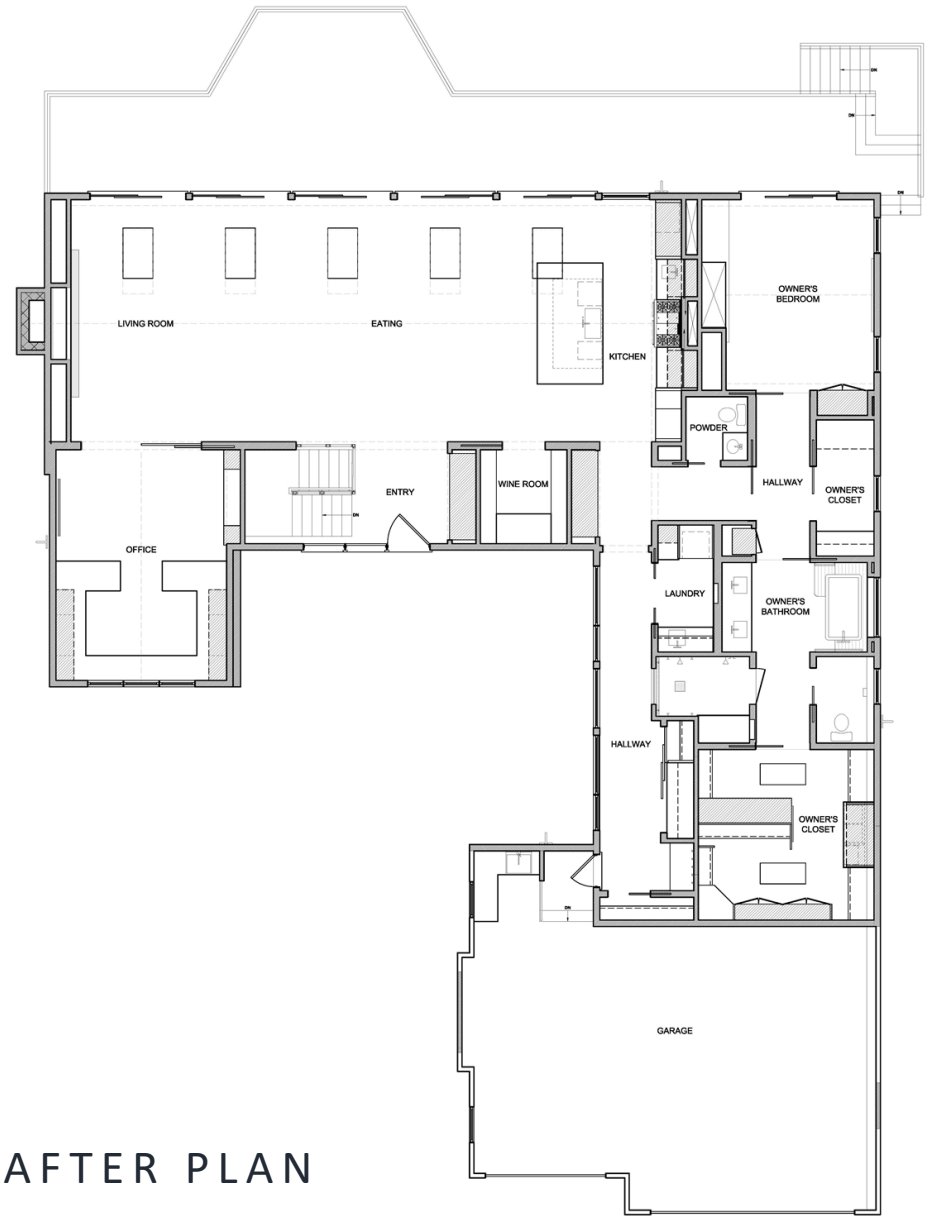
BEFORE PLAN
LOWER LEVEL



AFTER PLAN
LOWER LEVEL



BEFORE PLAN
MAIN LEVEL



AFTER PLAN
MAIN LEVEL



AFTER



BEFORE



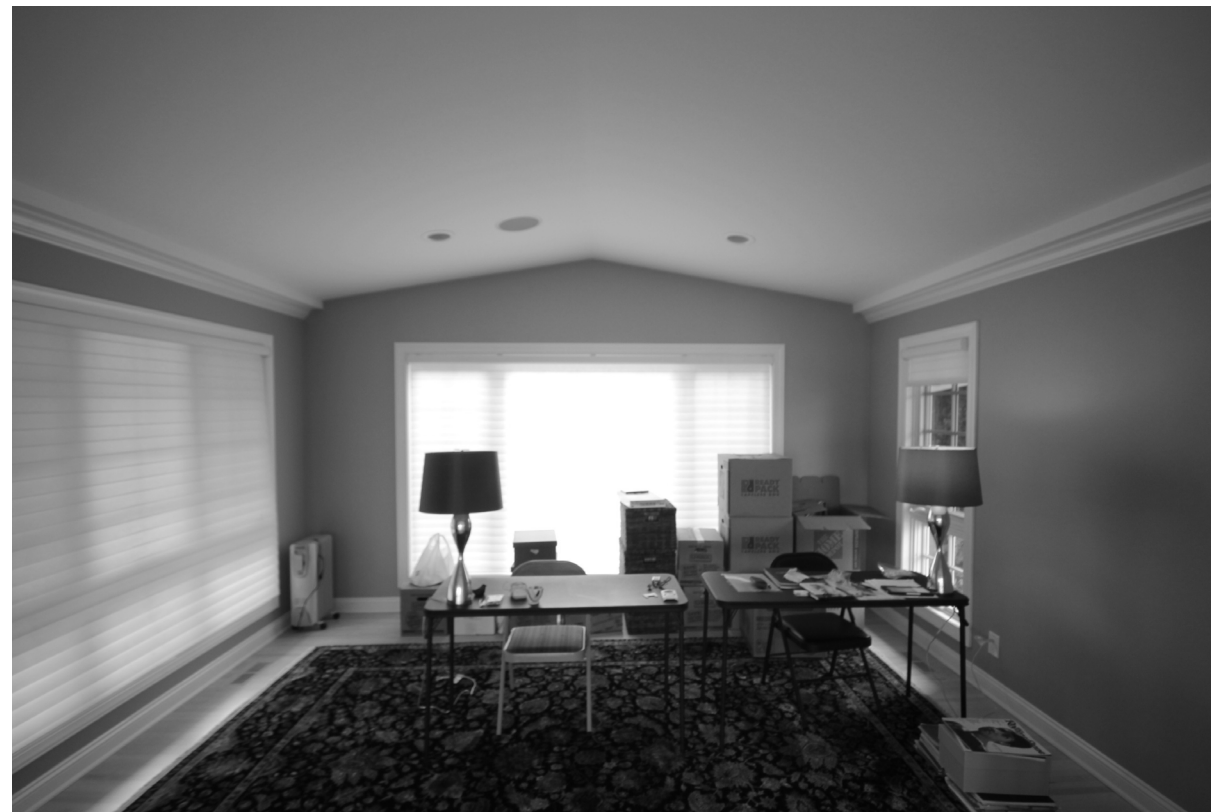
AFTER



BEFORE



AFTER



BEFORE



AFTER



BEFORE

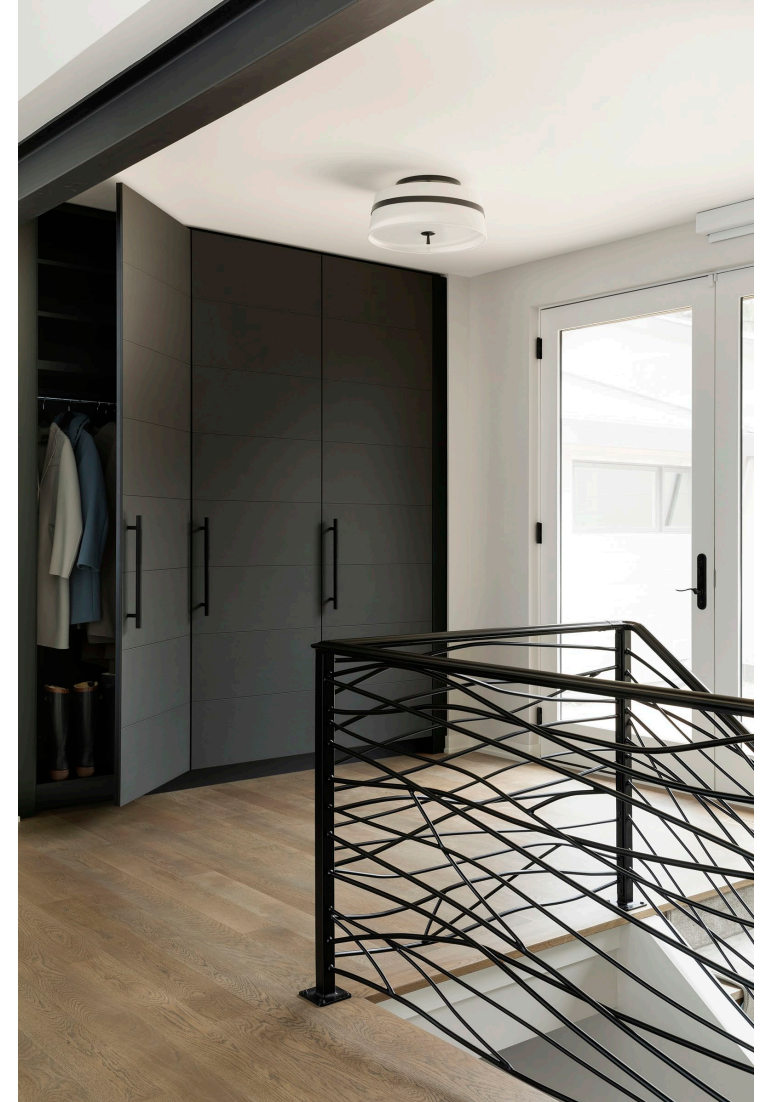


AFTER



BEFORE

AFTER

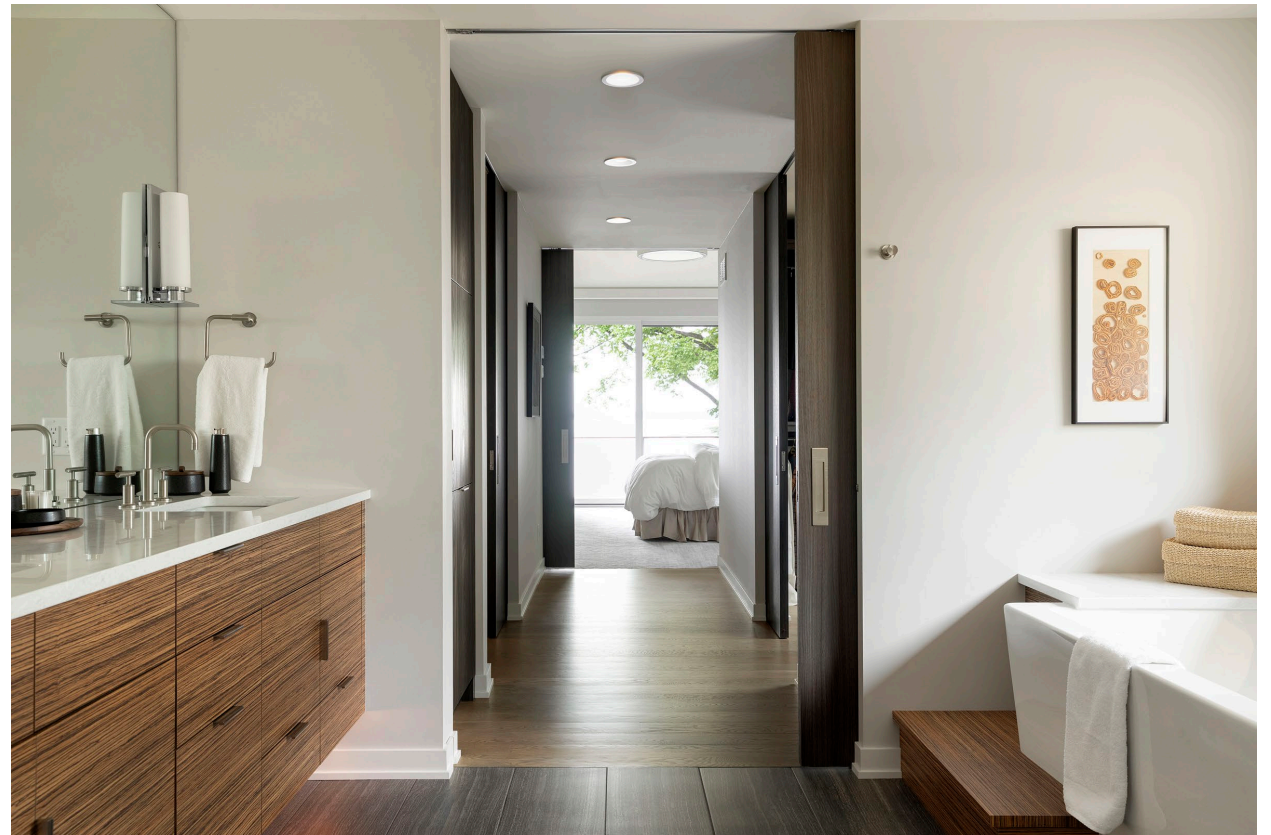


AFTER





AFTER



AFTER





AFTER



BEFORE



AFTER



BEFORE

AFTER

