

LASTING CHANGES



NARI MINNESOTA 2022 COTY AWARDS

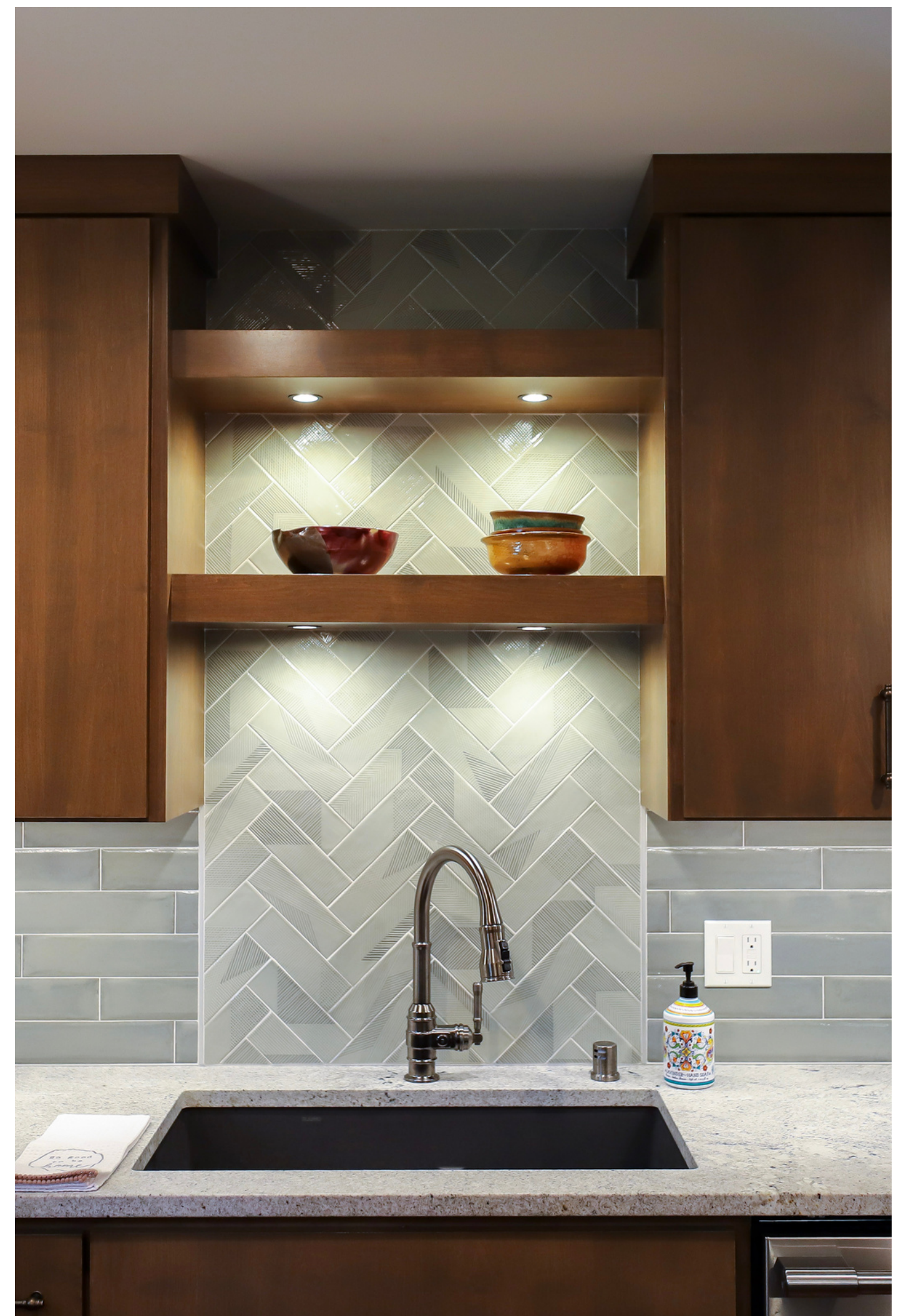
PROJECT: LASTING CHANGES

CATEGORY: RESIDENTIAL KITCHEN \$100,000 - \$150,000

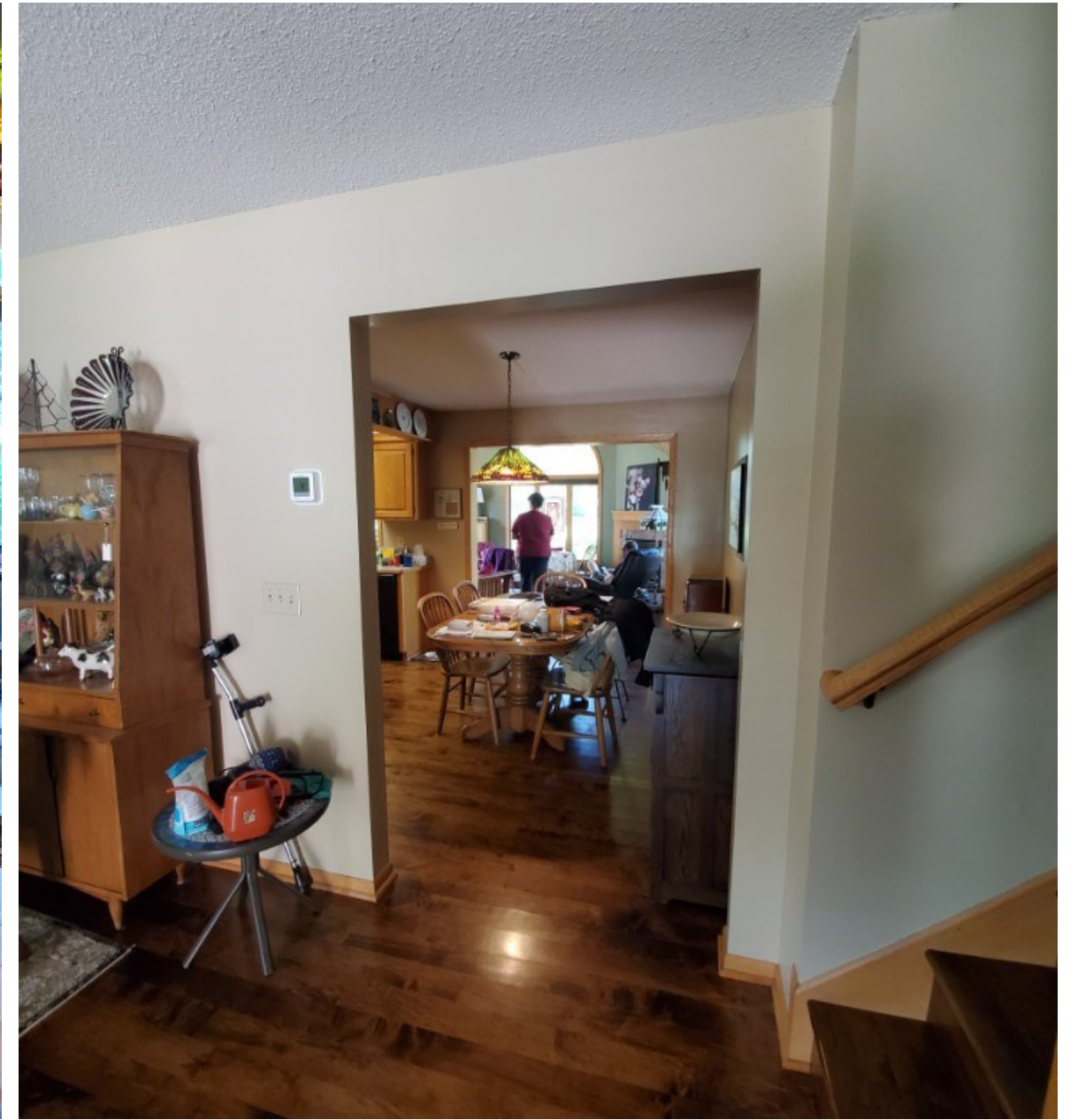
IN STARTING THIS KITCHEN REMODEL THE GOALS WERE SIMPLE: MAKE THIS KITCHEN A GREAT PLACE TO COOK, SHARE FOOD, AND SPEND TIME TOGETHER WITH FAMILY AND FRIENDS. IN ORDER TO DO THAT, WE NEEDED MORE ROOM. AFTER TALKING WITH THE CLIENT, WE ELECTED TO UTILIZE THE NEIGHBORING LIVING AREA AS A PART OF THE NEW KITCHEN SPACE. THE LIVING ROOM WAS RIGHT IN THE ENTRY AND WASN'T GETTING A LOT OF USE AS IT WAS. IN DOING THIS, WE WERE ABLE TO SEE ALL THE POSSIBILITIES THAT THIS 22' KITCHEN COULD OFFER. EACH PART OF THIS KITCHEN WAS HAND SELECTED TO BEST REPRESENT THE CLIENTS WANTS AND NEEDS. IN THE END, THIS BEAUTIFUL KITCHEN SERVES EACH PURPOSE IT WAS INTENDED FOR.

CLIENT NEEDS

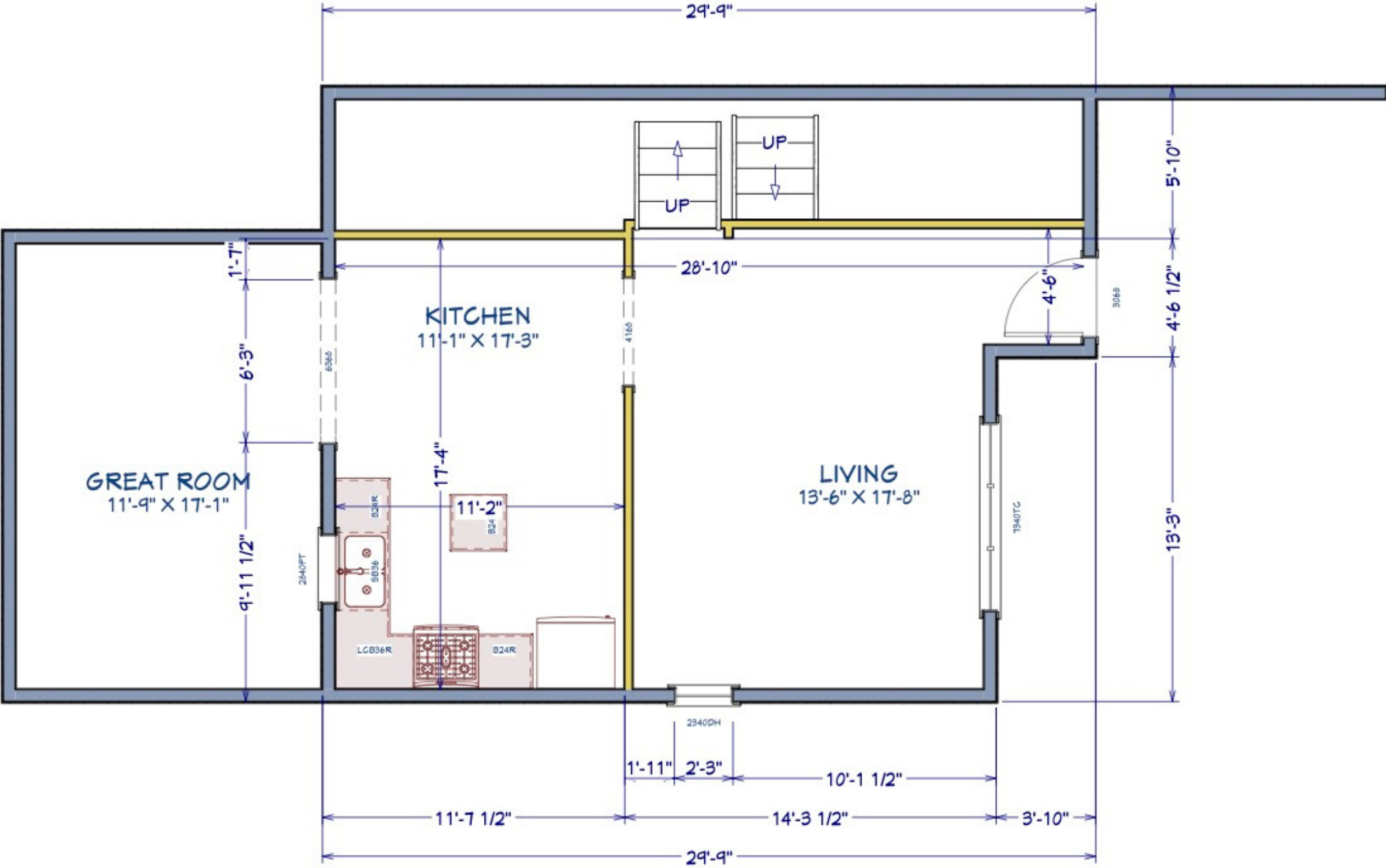
- OPEN FLOOR PLAN KITCHEN
- A KITCHEN MADE FOR COOKING
- MORE PREP AREA
- SEPARATE PREP SINK NEAR REFRIGERATOR
- CLASSIC STYLE
- MORE STORAGE



BEFORE PHOTOS

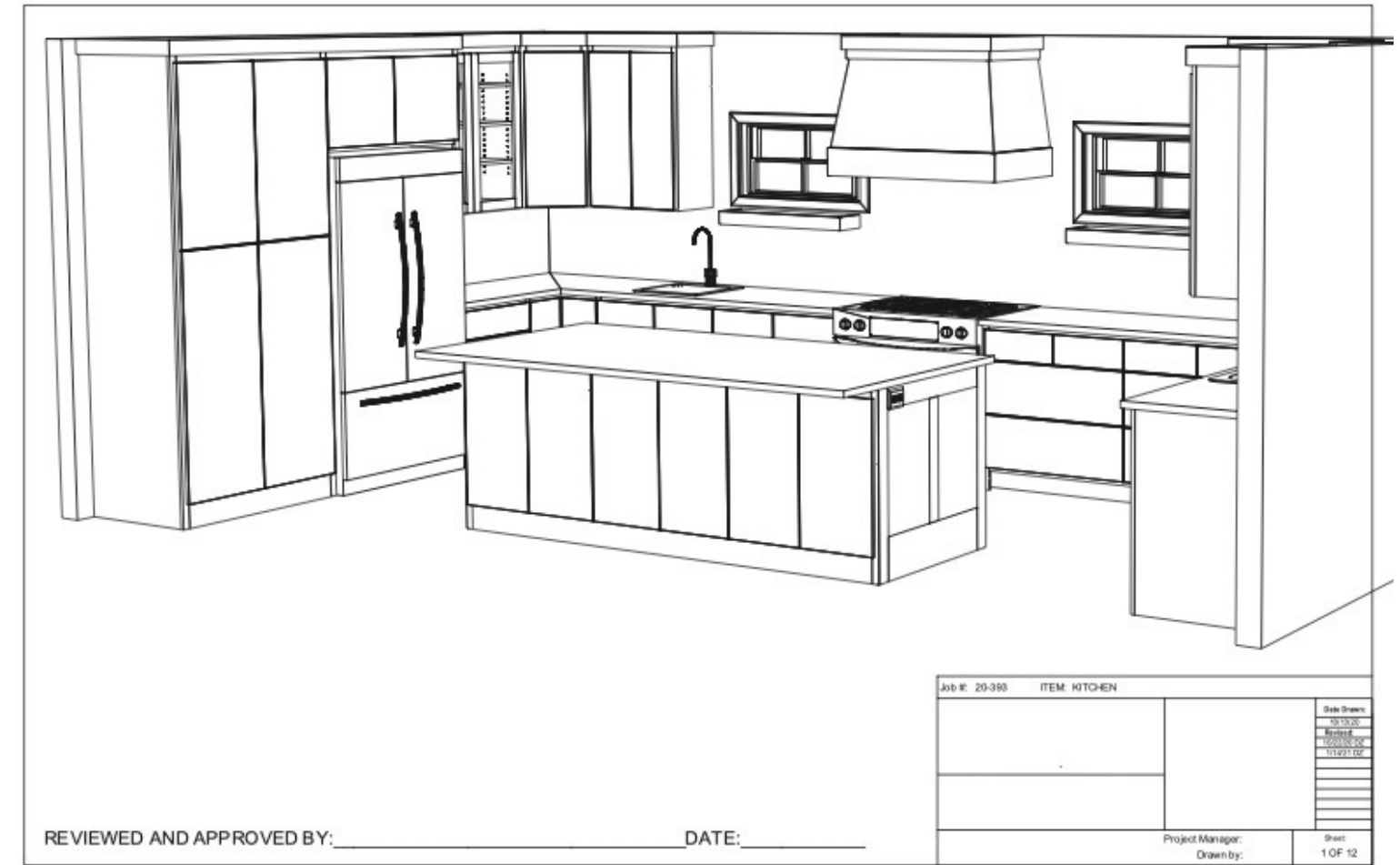
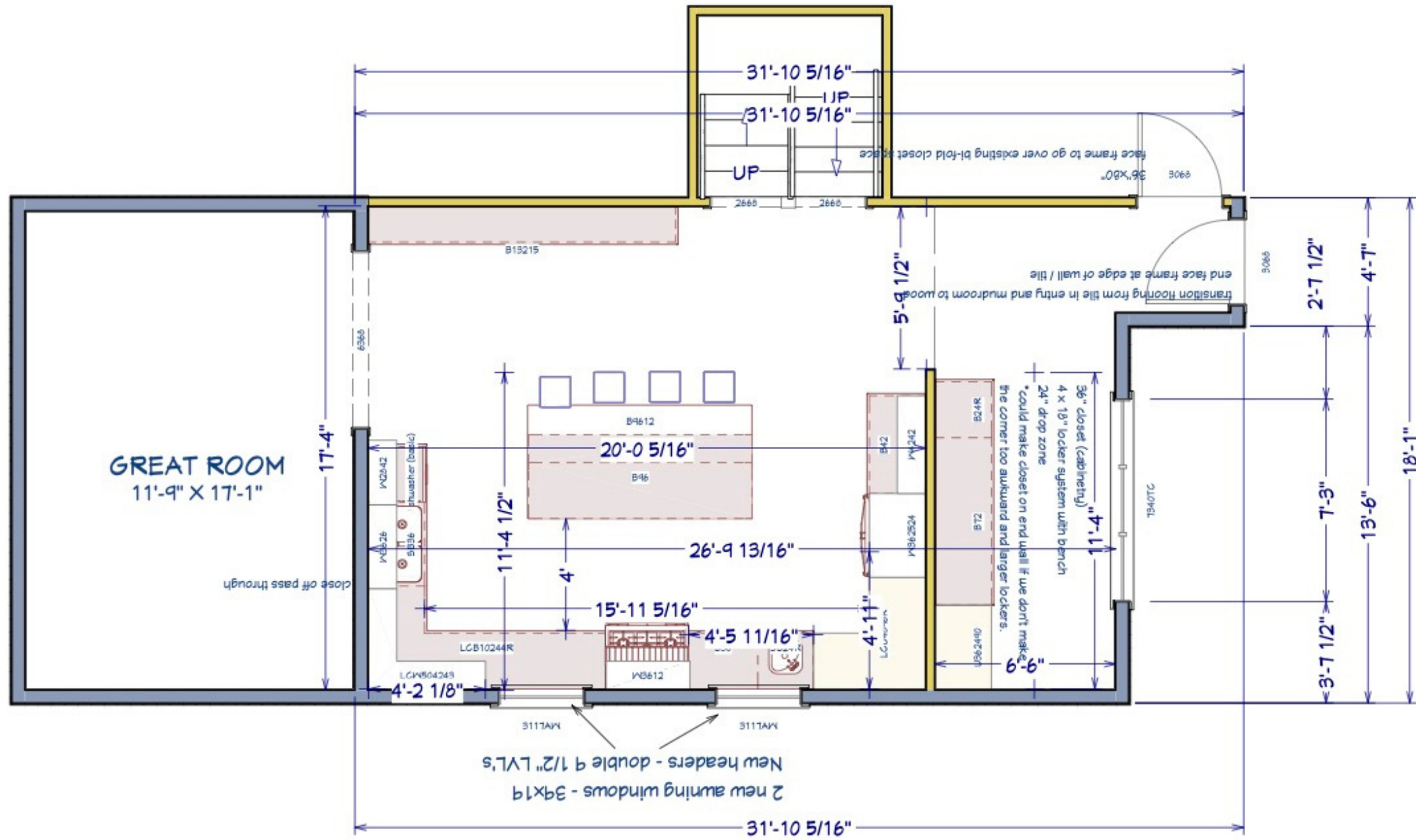


BEFORE FLOOR PLAN



EXISTING LAYOUT

AFTER FLOOR PLAN/RENDERINGS



BEFORE & AFTER



FUNCTIONALITY

- LARGE ISLAND FOR EASY KITCHEN PREP
- COUNTERTOP SEATING IN KITCHEN AREA AT ISLAND
- GRANITE COUNTERTOPS FOR CUTTING, HOT POTS AND PANS, AND SERVING SPACE
- TWO SINKS, INCLUDING ONE PREP SINK BETWEEN REFRIGERATOR AND RANGE CREATING MORE ROOM FOR MULTIPLE PEOPLE TO WORK AT ONCE
- UNDER CABINET LED LIGHTING
- OUTLETS STRATEGICALLY AROUND KITCHEN AND ISLAND FOR COOKING TOOLS



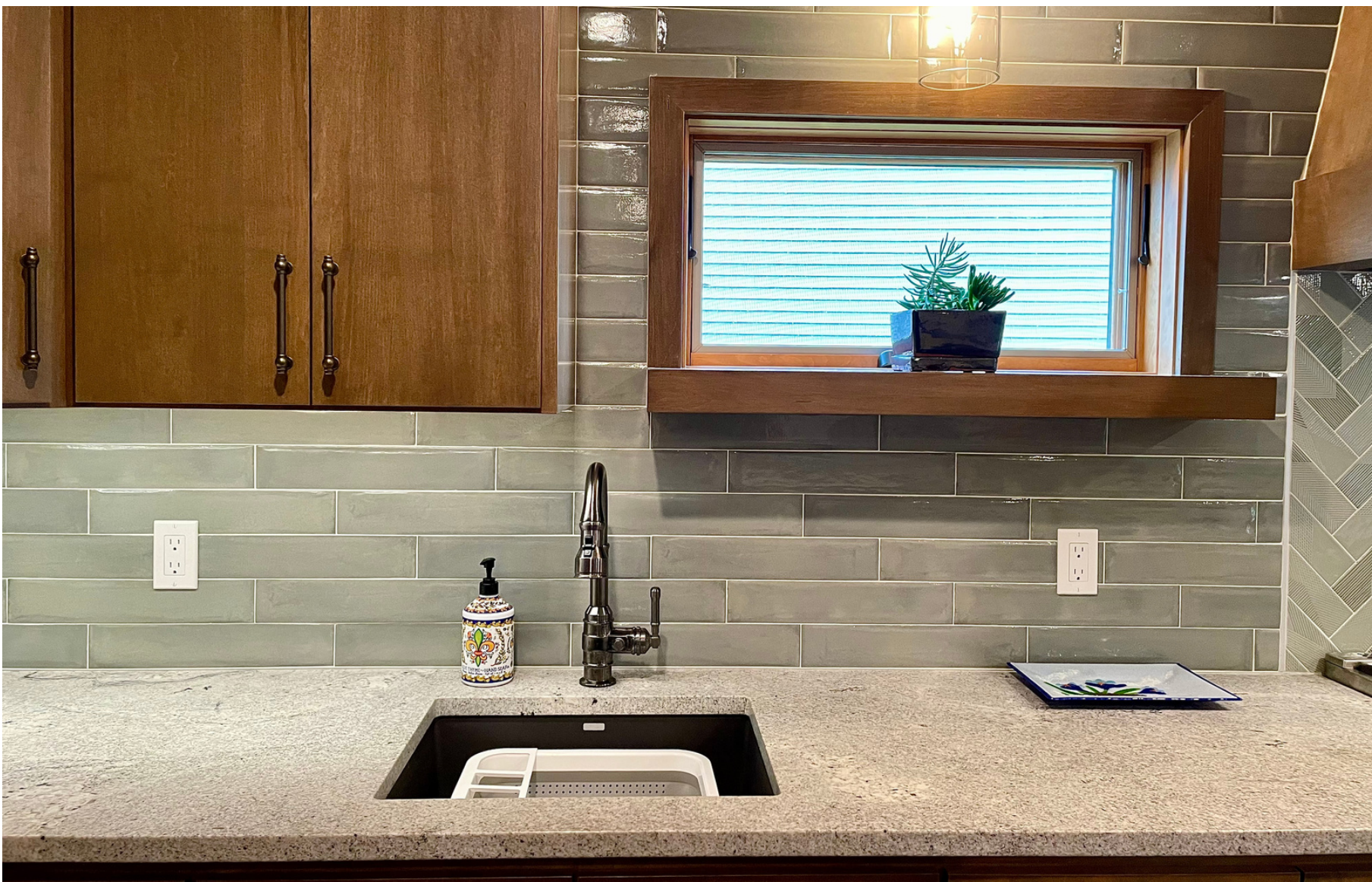


AESTHETICS

- SAGE GREEN TILE FEATURES ABOVE RANGE & MAIN SINK IN HERRINGBONE
- BRONZE HARDWARE TO BLEND WITH THE WOOD TONES WHILE NOT TAKING AWAY FROM THE MAPLE CABINETS
- CUSTOM FULL OVERLAY MAPLE CABINETS
- TRADITIONAL STYLE
- CLEAN LINES THROUGHOUT
- NATURAL GRANITE COUNTERTOPS IN HIMALAYA WITH LEATHERED FINISH
- LIGHTING IN ALL THE RIGHT AREAS TO HIGHLIGHT THIS KITCHEN

CRAFTSMANSHIP/INNOVATIVE METHODS

- TRIM AROUND NEW WINDOWS CUSTOM MATCHED TO CABINETS
- PREP SINK ADDED TO KITCHEN NEAR REFRIGERATOR
- 8' X 5' ISLAND LARGE ENOUGH FOR PREP AND SEATING
- CUSTOM HOOD TO MATCH KITCHEN
- USED FEATURE LIGHTING TO HIGHLIGHT PREP AREAS AS WELL AS A CUSTOM STAINED GLASS ISLAND LIGHT THAT WAS MADE BY THE HOMEOWNERS LATE HUSBAND





PROJECT CHALLENGES

WHEN WORKING WITH A KITCHEN THIS LARGE, DESIGNING A LAYOUT THAT MAKES SENSE WITHOUT SEEMING TO HAVE RANDOM CABINETS CAN BE A CHALLENGE. NEEDING TO CREATE A PROPER FLOW AND PASSAGE TO THE GREAT ROOM WITHOUT REMOVING ANY KEY POINTS AND SEATING, WE UTILIZED A PREP SINK SPACE AS WELL AS SEATING AT THE ISLAND TO COMBAT THIS. OF COURSE MECHANICAL WAS MOVED AS WELL TO RE-WORK THE FULL KITCHEN DESIGN AND WINDOWS WERE CHANGED OUT. THESE NEW WINDOWS ON EITHER SIDE OF THE RANGE ALLOW NATURAL LIGHT TO FILL THE ROOM, GIVING THIS KITCHEN A BRIGHT AND INVITING FEEL.

CONSTRUCTION PHOTOS

