

Excelsior Escape

Commercial Exterior

NARI MINNESOTA - 2022 COTY AWARDS



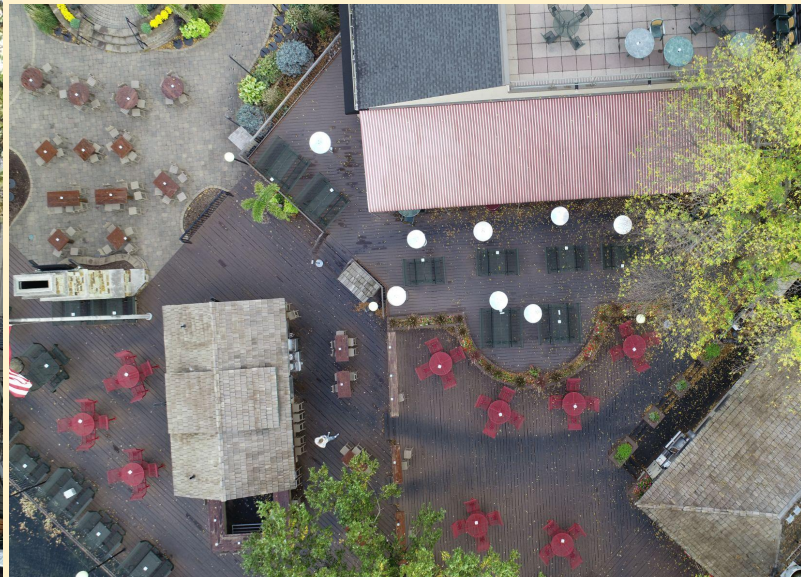


-Overview-

A renowned and vibrant restaurant that sits on the south end of the picturesque Lake Minnetonka. No matter the season or the weather, people gather here for music, sports, good food, and better company. For this project, our clients were in need of an outdoor patio space that could handle a multitude of crowds and Minnesota's unpredictable and ever-changing weather



BEFORE



-Client Needs -

Our clients needed a commercial dining space capable of serving customers on sunny days, during snow storms, and for every weather pattern in between. We needed to capitalize on the gorgeous water views and easy lake access, by creating a space for customers to enjoy during any season of the year. This new space needed to be light, bright, and airy, while offering protection from the elements when necessary.



Additionally, this new outdoor patio space needed to be aesthetically pleasing and versatile in order to draw crowds of all ages and to accommodate a variety of activities and events. Examples of such events include but are not limited to, private parties, every day dinner service, viewing parties for sporting events, and live musical entertainment.



Aesthetics

In addition to improving the functionality of the restaurant, our clients wanted to elevate the look of the patio.

To do this, we incorporated 5 skylights into the sloped, standing seam, 16' by 50' metal roof, in order to maximize the amount of natural light in the space. Additionally, in order to heighten the overall appeal of the space, we installed the vinyl screens within the roof so that they could be hidden when not in use. When the screens are retracted, the patio seamlessly transitions from indoor to outdoor dining.





BEFORE

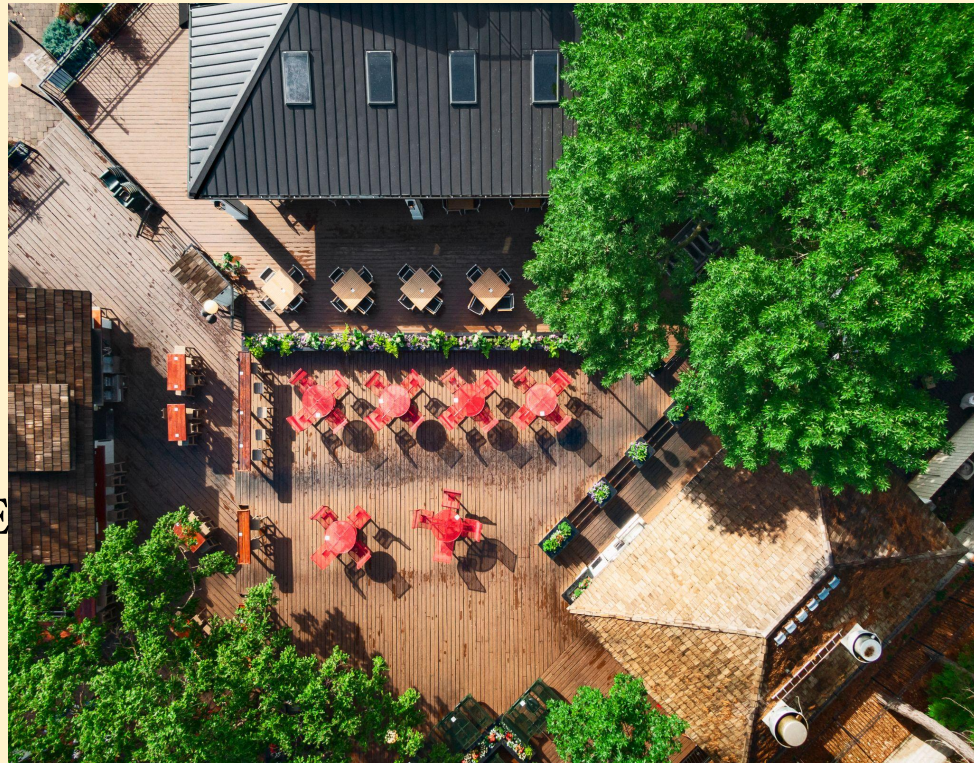
AFTER





BEFORE

AFTER





BEFORE

AFTER





Previously, this space didn't allow clientele to seamlessly shift between an indoor and outdoor dining experience. The patio felt disconnected from the restaurant and it prevented the owners from fully maximizing the potential of the space and capitalizing on the crowds the year-round events draw to the restaurant.



Craftsmanship & Functionality

In order for this new patio to adapt to the Minnesota weather, we installed 10, 6,000 watt infrared heaters and several vinyl screens that can be hidden in the roof or dropped down to cover the patio space. The heaters are easy to use and control, allowing the restaurant staff to program the heaters in 4 zones and set different temperatures for separate sections of the patio. When in use, the vinyl screens can be deployed with the push of a button. They keep the wind, rain, and snow out, while trapping the heat inside the space. The addition of these heaters and the vinyl screens allows our clients to use the patio year round.



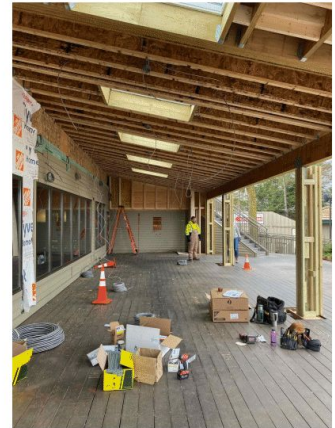


We also implemented a new server station and small bar top to the outside patio. This addition is perfect for private parties and helps maintain the flow of the restaurant.

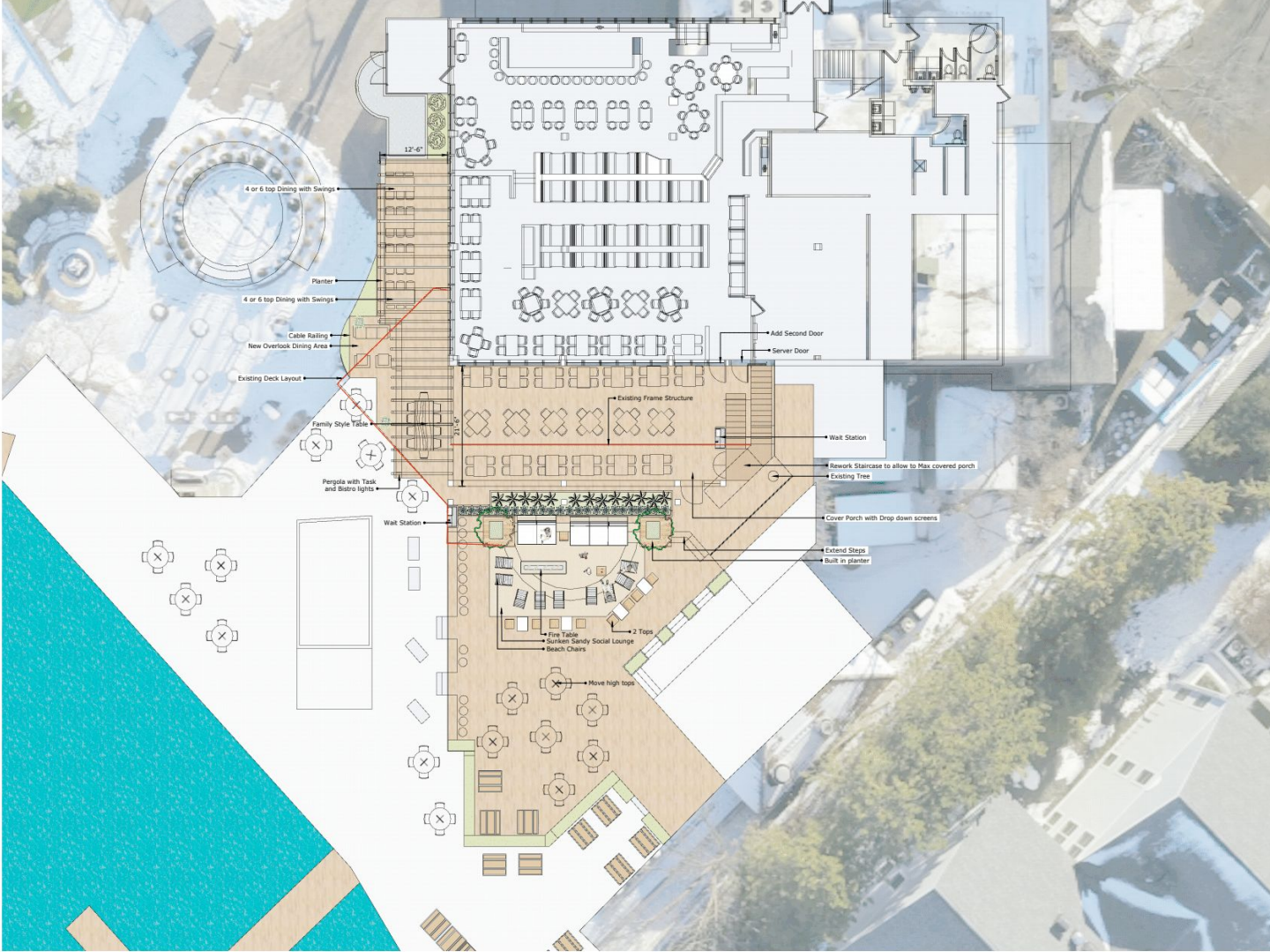
Siding Plan

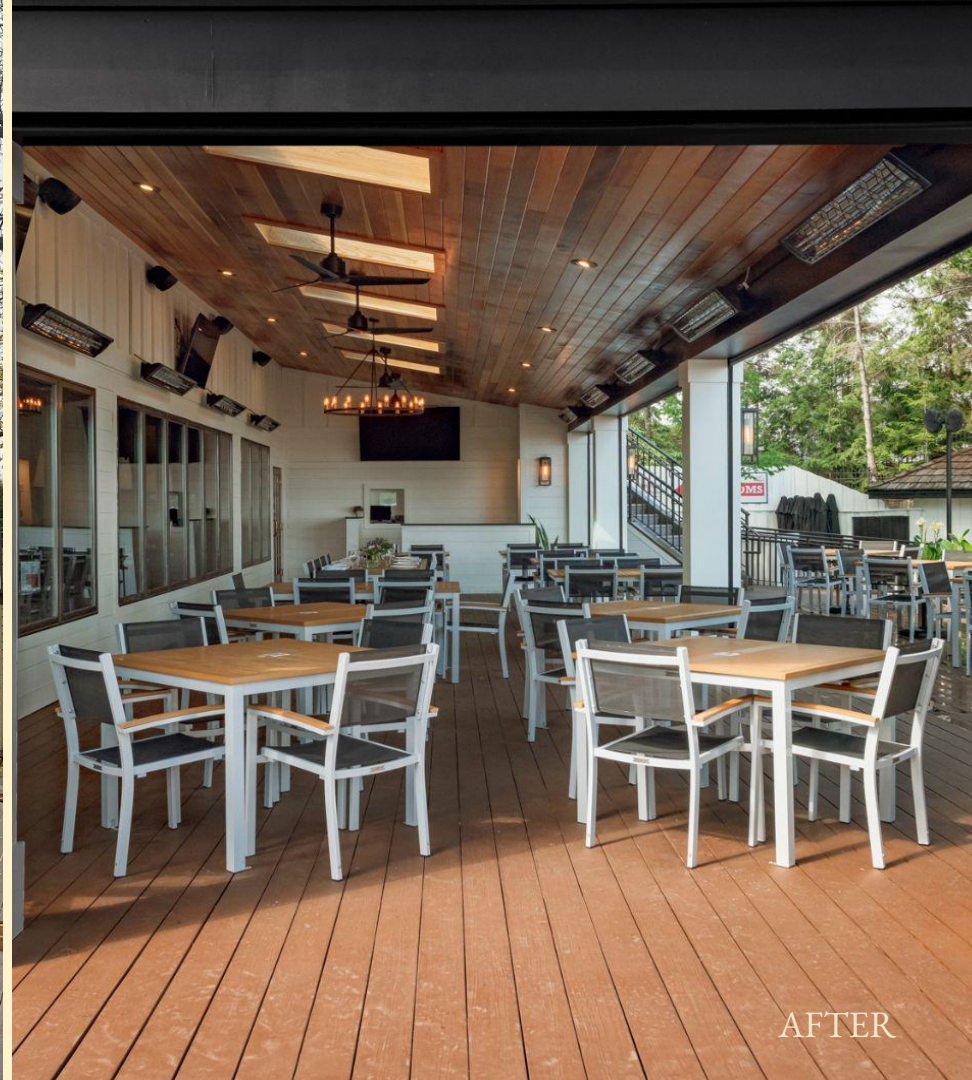


Dining Porch Siding Plan
scale: 1/4"=1'



Landscape Plan







Challenges & Innovations

The location of the site presented one of the biggest challenges for this project. While this location offers beautiful views of Lake Minnetonka, it is located on coveted waterfront property and it is surrounded by an elevated deck. This prevented us from digging traditional footings. Instead we installed helical piers.

Excelsior Escape

Commercial Exterior

NARI MINNESOTA - 2022 COTY AWARDS

